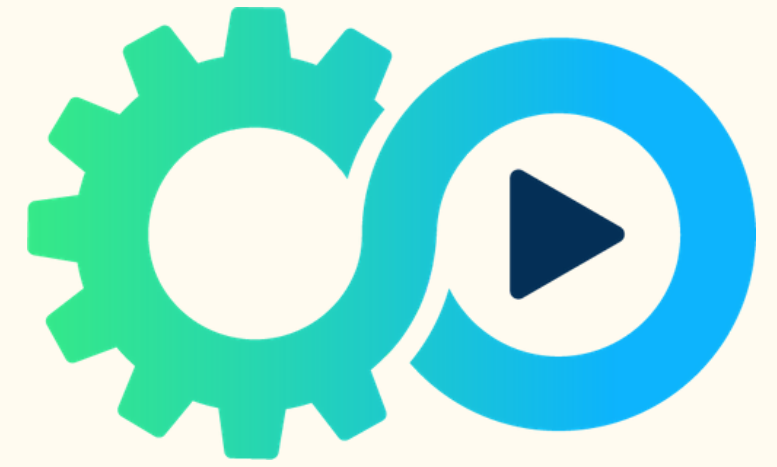
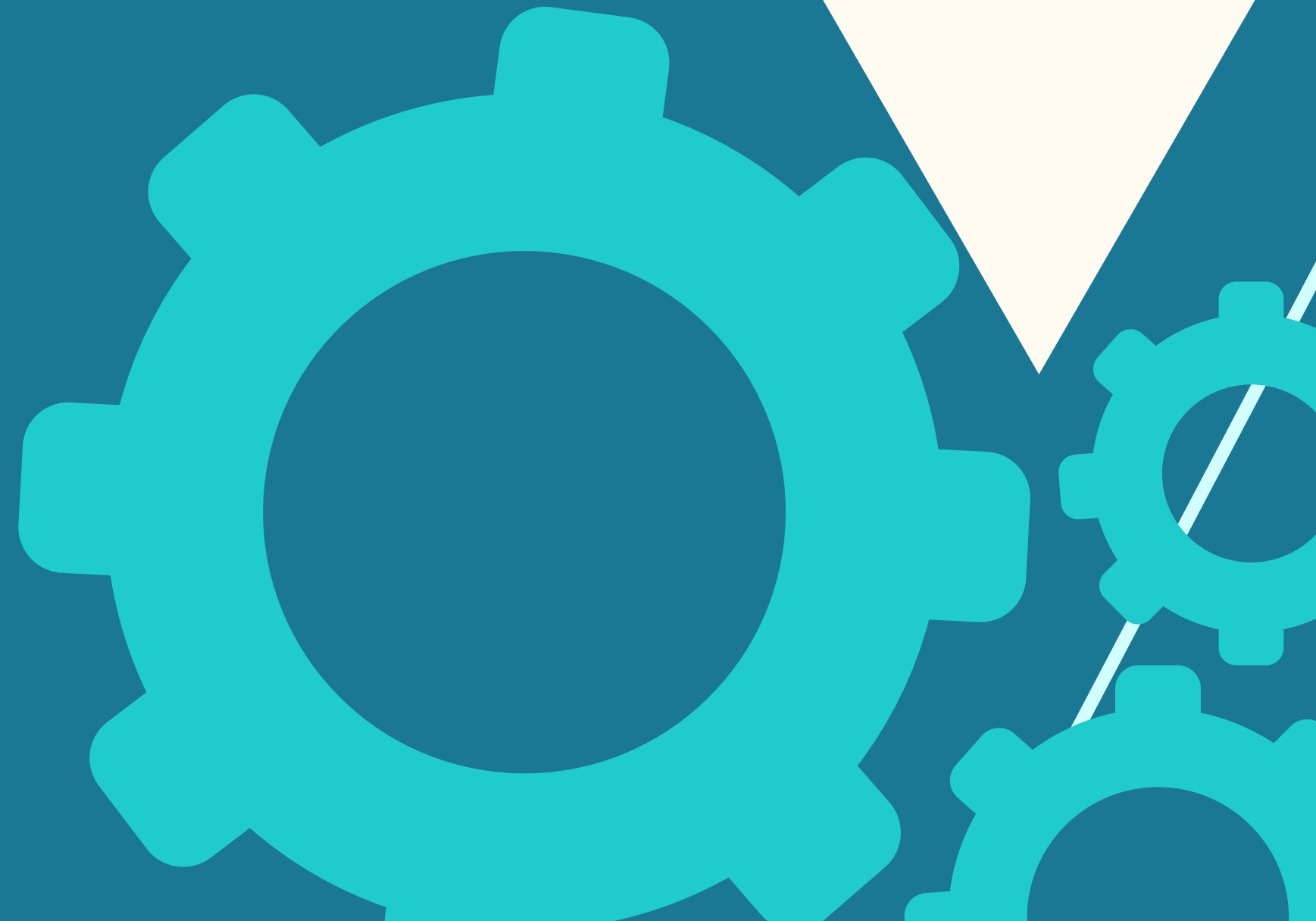


METRO EARLY COLLEGE HIGH SCHOOL



New Student Admissions Meeting

Your Potential. Our Mission.





Questions

DURING THE PRESENTATION, FEEL FREE TO ASK QUESTIONS IN THE CHAT. WE'LL REPLY TO YOU DIRECTLY OR POST TO THE GROUP IF THE ANSWER IS APPLICABLE TO ALL.



Topics

Metro Overview

Metro Habits

Virtual Days & COVID Response

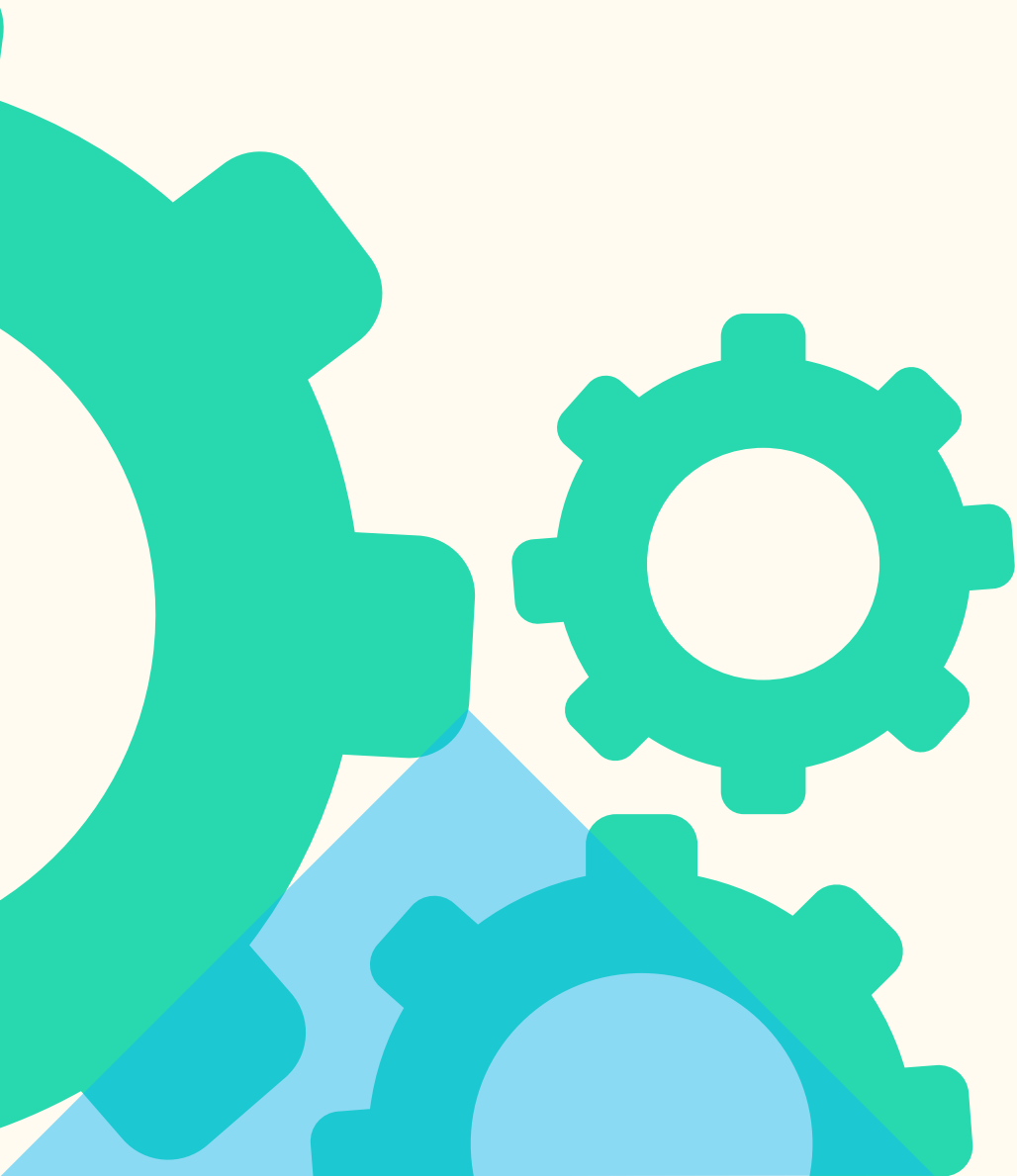
H.S. Curriculum

Parent Engagement

Next Steps



Brief Overview of Metro



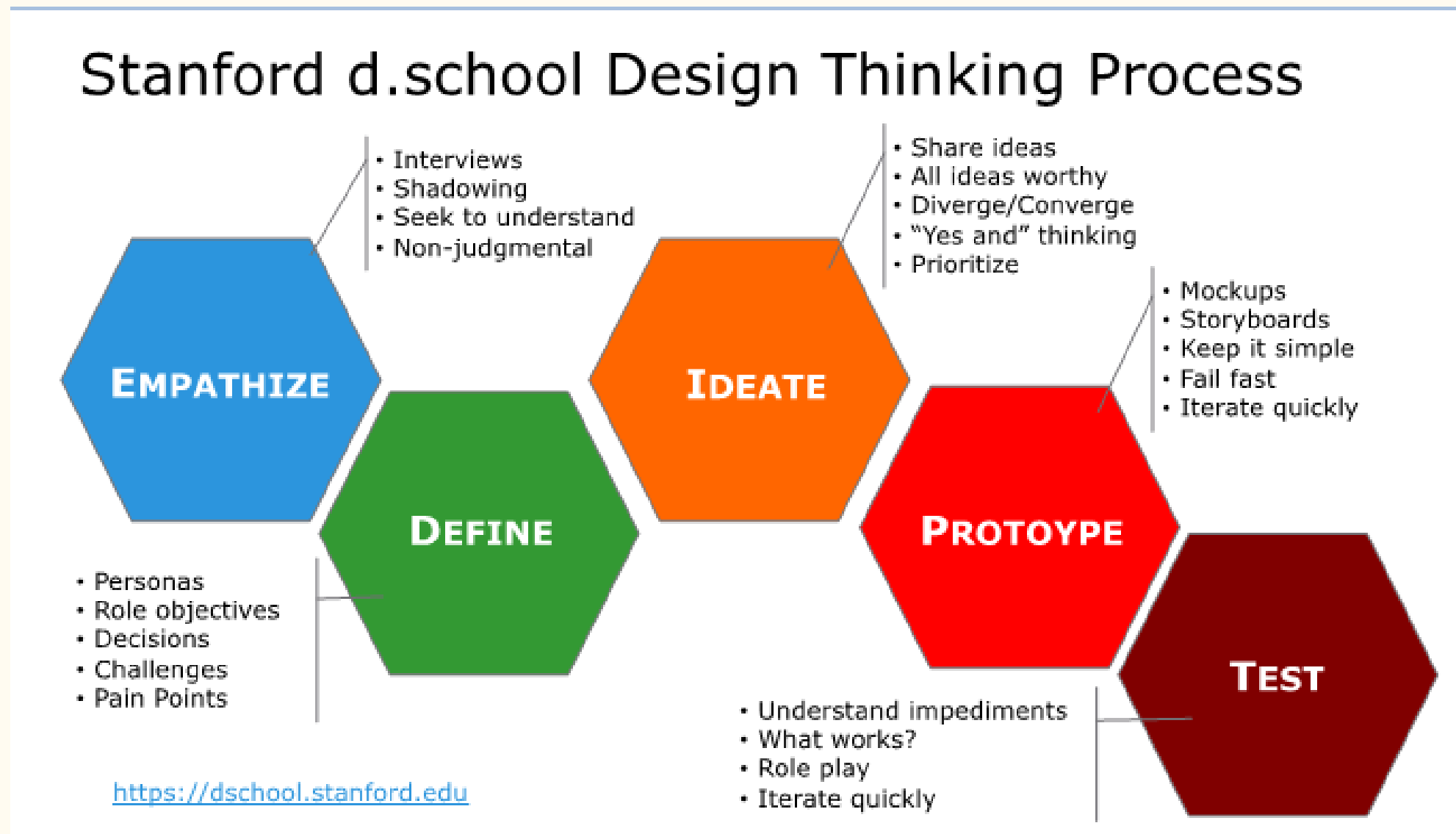
Metro Early College High School opened in 2006 out of the desire to create a small STEM school with a “big footprint.”

Students engage in a personally relevant and academically rigorous curriculum within a safe and trusting environment.

Our goal is to provide an intellectually vibrant learning community that prepares students for a world where math, science, and technology are vitally important.

Metro serves as the platform school for the Ohio STEM Learning Network (OSLN) and is the model for Race to the Top programs in Ohio, Tennessee, New York, North Carolina and Texas.

Guiding Principles



Innovative: expect that things will change
Student-centric: advancement opportunities
Adaptive: respond to what is/isn't working

- STEM
- Mastery Learning
- Metro Habits of Heart and Mind
- Project Based Learning
- Design Process
- Educating the Whole Child
- 1:1 Technology

Metro Habits

- ▲ EFFECTIVE COMMUNICATOR
- ▲ INQUIRING LEARNER
- ▲ ACTIVE AND RESPONSIBLE DECISION MAKER
- ▲ EFFECTIVE COLLABORATOR
- ▲ CRITICAL THINKER
- ▲ ENGAGED LEARNER

School Hours

8:00AM - 2:30PM

STUDENTS CAN BEGIN ARRIVING AT 7:15AM

PROMPT PICKUP AFTER 2:30PM

AFTER CARE 2:45 - 6:00PM (\$90/MONTH)

Transportation

DISTRICT BUSES: COLUMBUS, HILLARD, AND SOUTH-WESTERN

PARENT TRANSPORTATION & CARPOOLS

METRO SCHOOLS STUDENT DRESS CODE

MASCULINE DRESS

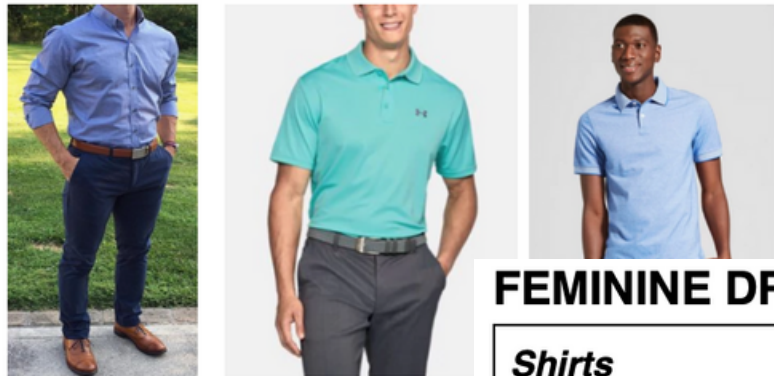
Shirts

Collared shirts, such as polo/golf style, oxford style, or dress shirts that are long or short-sleeved. All must be tucked in if longer than the back pockets of pants.

- ❖ T-shirts of any kind are not permitted
- ❖ Crewneck sweatshirts are not permitted
- ❖ Hooded sweatshirts are not permitted

Student-athletes may wear their team *jersey* on the day of a game with dress code pants and shoes. *Team sweatshirts and hoodies are not acceptable.*

ACCEPTABLE



NOT ACCEPTABLE



Dress Code

FEMININE DRESS

Shirts

Collared or un-collared shirts and tops may be pullover or button style. Shirts and tops must be tucked in unless the shirt was made to be worn untucked. Sleeves may be long or short; sleeveless blouses must be three inches wide at the shoulder. Underwear and midriff may not be exposed.

ACCEPTABLE



NOT ACCEPTABLE





Daily Schedule

Fall & Spring Semesters: 4 academic classes & Advisory

January Term: 2 weeks between semesters for focused remediation & unique coursework.

Block Scheduling: Helps develop strong student/teacher relationships, motivates deep inquiry, and prepares students for college courses.

Advisory: Provides an adult advocate and a framework for goal-setting and personal skill-building.



Virtual Days



PROVEN EXPERIENCE

Metro has used virtual learning in addition to traditional learning for many years.



1:1 TECHNOLOGY

All students have a school-issued iPad to facilitate virtual and in-person learning.



NO MISSED OPPORTUNITIES

Virtual learning is used when in-person learning is not possible (snow days, professional development, etc.)

COVID-19 Response

- **Fall 2020:** All Virtual Instruction
 - Began term online only
 - Introduced hybrid option
 - **Spring 2021:** Blended Instruction
 - Parent choice of all-virtual or hybrid
 - Hybrid students assigned to 2-days onsite
 - Daily health assessment, mask requirement, social distancing, extra cleaning/sanitation
-



COVID-19 Response

Current Protocols

- Mask requirement, health assessments
- Staff participated in early vaccination
- Eligible students encouraged to be vaccinated this summer

Fall 2021 Plan

- Preparing to return to in-person instruction
 - May adjust based on direction from the state
-





Metro Curriculum

THREE PHASE PLAN

Metro Curriculum Phase 1: Core H.S. Credits

4 English Credits → English 9, 10, 11, 12

4 Math Credits → Algebra 1, Geometry, Algebra 2, Statistics or Trig

3 Science Credits → Biology, Chemistry, Physics or Environmental Justice

3 Social Studies Credits → World Studies, American History, Government, Economics or Entrepreneurship

1 Art Credit → Introduction to Art or 3D Art

1 Wellness Credit → .5 PE credit and .5 Health credit

4 Elective Credits → Advisory (.25/year), Foreign Language, Mechatronics, etc.

State of Ohio requires 20 credits for graduation.

Metro students will exceed state requirements and often qualify for State Honors
and/or STEM Honors diplomas.

(Visit the ODE website for details)



Sample 9th Grade Schedule

Fall Term	Spring Term
English 9	English 10
Algebra 1	Geometry
Environmental Justice	Biology
World Studies/Metro Skills	Intro to Fine Arts

J Term
Non-Credit Electives
Recovery Courses

Students are enrolled in Advisory for the full school year.

We will take into account H.S. credits already earned and adjust student schedules accordingly.

Classes offer a year's worth of content in one semester in an accelerated and rigorous format.

Sample 10th Grade Schedule

Year 2 Student (Sophomore)		
Fall Semester (15 Weeks)	January Term (2 Weeks)	Spring Semester (17 Weeks)
American History	Student Choice: Recovery Time Passion Project	Government
Chemistry or Physics		Technical Elective
English 11		English 12
Algebra 2 or Trig		Elective/ Entrepreneurship

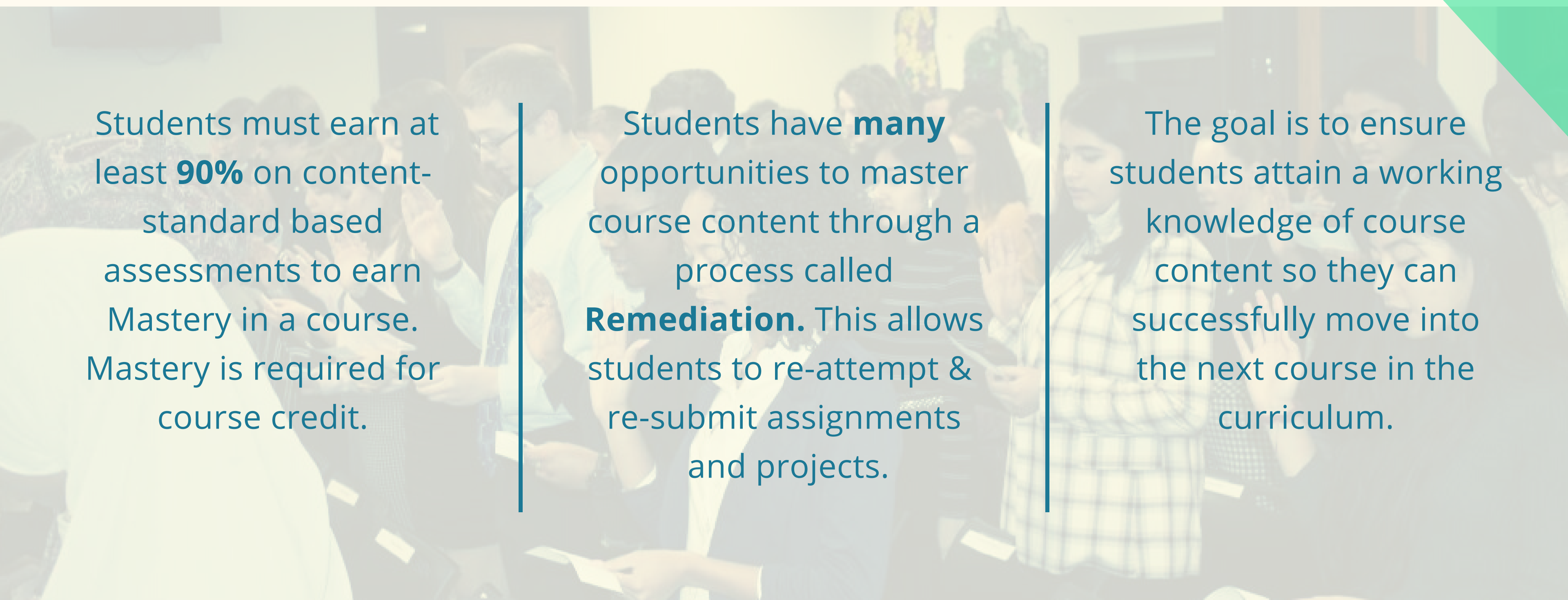
Students are enrolled in Advisory for the full school year.

New 10th graders should provide a copy of their current grades/courses to ensure proper scheduling.

Classes will be selected based on progression in each academic area, not solely on grade level.



Mastery Grading



Students must earn at least **90%** on content-standard based assessments to earn Mastery in a course. Mastery is required for course credit.

Students have **many** opportunities to master course content through a process called **Remediation**. This allows students to re-attempt & re-submit assignments and projects.

The goal is to ensure students attain a working knowledge of course content so they can successfully move into the next course in the curriculum.

Gateway



16+ CORE CREDITS

Once academically ready, with maturity and motivation, students work with Advisor to begin the process.



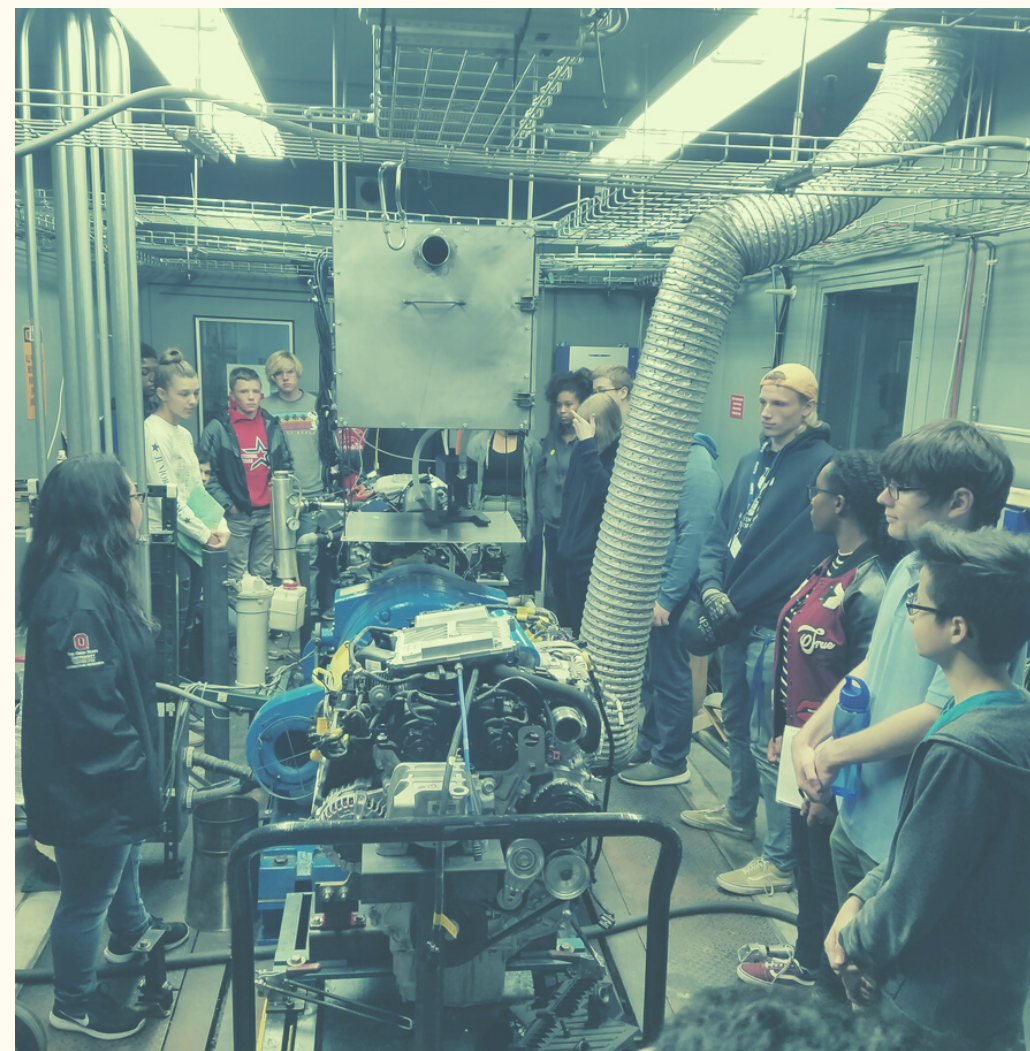
PRESENTATION

Students develop a Gateway presentation to summarize what they have learned and prove they are ready for college courses.



MEETING


Teachers, parents, and members of the community attend the presentation to determine if student is college ready.



Metro Curriculum Phase 2: Early College Experiences

- ECEs introduce students to college-level coursework with the added benefit of a cohort of peers and support from Metro staff.
- Each ECE includes high school and college credits
- Pathway programs are available at Ohio State and Columbus State
- Students participate in professional research and complete capstone projects with area business partners.
- Professional work experiences are a great addition to college applications.

Early College Experience Pathways



BODIES

Health Sciences, Veterinary
Science, Medicine

DESIGN

Engineering, Construction
Management, Computer
Science/ IT Tech

GROWTH

Agriculture,
Hospitality Management,
Business/Entrepreneurship

ENERGY

Environmental Science,
Economics, Public Policy/Law

*Pathways are subject to change

Metro Curriculum Phase 3: College Coursework

Once students have completed an ECE, they can enroll in additional college classes.

- Students must complete the Metro/OSU or Metro/CSCC application process.
- Classes are scheduled with an academic advisor each semester.
- Most students complete General Education Credits (transferrable to most universities).
- Cost of books and classes is covered.
- Academic performance will impact ability to continue college enrollment.



A man in a suit is standing at the front of a large room, presenting to a large audience seated on the floor. The room has large windows and a sign that says "design". A banner for "SMART COLUMBUS" is visible in the background.

Why Metro?

YOUR POTENTIAL. OUR MISSION.



High Expectations: Student Growth

- **Rigorous Curriculum:** Schedules designed to allow students to accelerate beyond traditional coursework to prepare for college and career.
- **Design Challenges:** Annual design challenges engage students in creative problem solving to develop solutions to real-world issues.
- **Service Learning:** Students become active members of their community by completing service hours in Advisory and on their own.

Proven Results

*as of 1/28/2021

\$3,000,000

In Scholarships for the class of 2020

24,119

College credits earned while in high school

1,029

Graduates to date

11

Graduating classes (2010 to 2020)

100%

Graduation Rate



STUDENT ENGAGEMENT

Clubs (new list each term):

Examples NHS, Mock Trial, Student Council, Performing Arts, ESports, Board Games, Metrobots (Robotics team)

Sports: Students are eligible to play sports at their district home school. Metro will provide coaches with grades for eligibility.

Social Activities: Metro hosts a variety of activities including Winter Formal, movie nights, talent shows, and prom.



Parent Engagement

PARENT INVOLVEMENT IS A CRUCIAL PART
OF STUDENT SUCCESS!



Ways to Get Involved

PTSA

Join our parent group to stay up to date on new projects, fundraisers, school activities, etc.

Email

ptsametro@gmail.com

to connect.

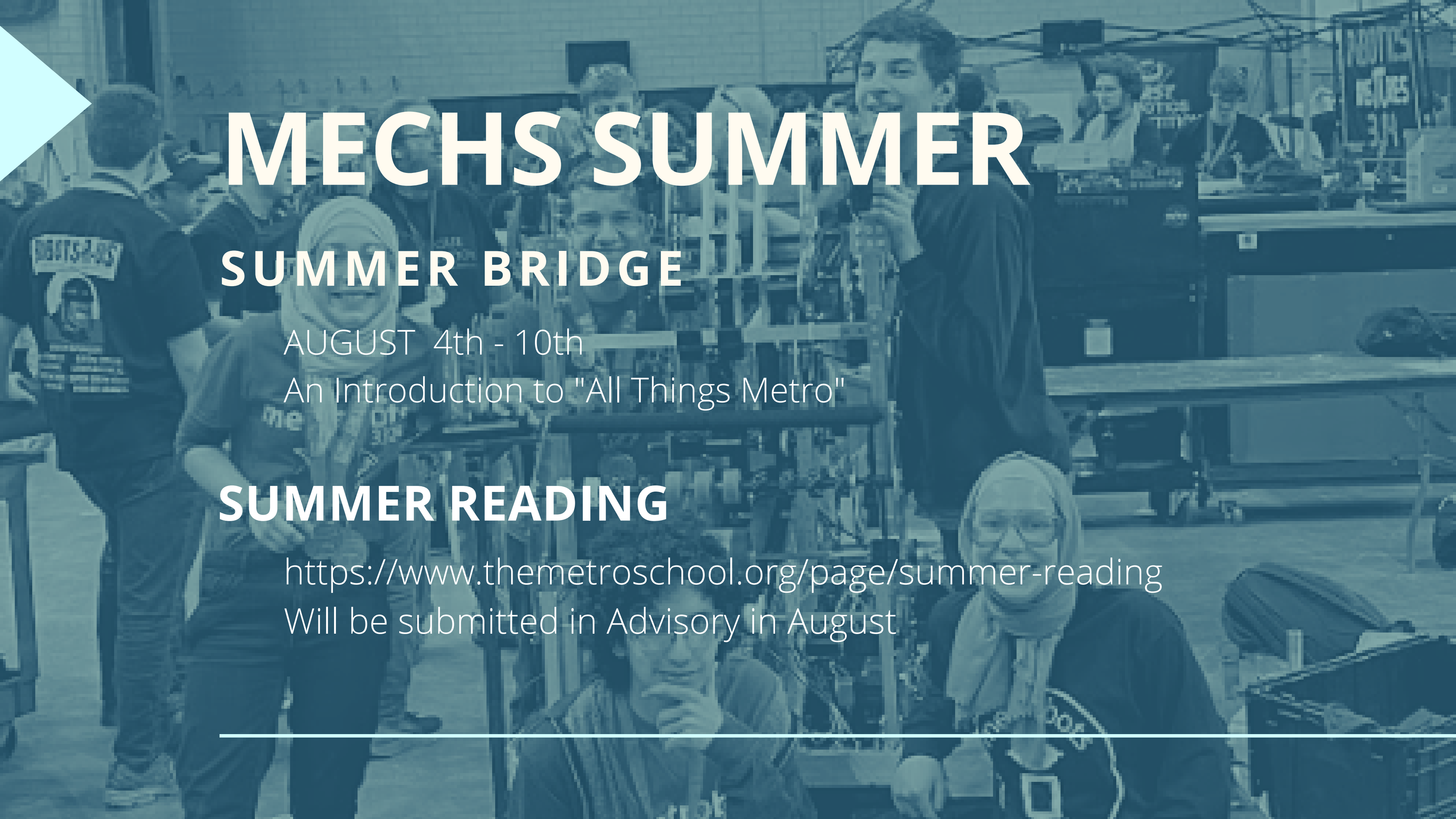
Online Resources

Use **PowerSchool** and **Schoology** to track your child's academic progress. Use **Securly** to track online activity.

Read the Weekly Email Update for announcements.

Meetings & Conferences

Attend Open Houses, Curriculum Night and Parent Conferences to stay informed and help ensure your child's success.



MECHS SUMMER

SUMMER BRIDGE

AUGUST 4th - 10th

An Introduction to "All Things Metro"

SUMMER READING

<https://www.themetroschool.org/page/summer-reading>

Will be submitted in Advisory in August

What's Next?

- Discuss today's presentation with your family to make a final decision.
- You will receive a link to officially accept your seat.
Your response is required by June 15.
- No response will be interpreted as a decline.



Once I accept my spot:

- You'll receive instructions to complete the online Student Registration process.
- Student Fee: \$200 (\$100 for families who qualify for F/R lunch)
- If your child has an IEP, 504 or WEP, send a copy to:
 - **IEP/504** - Lori Carter, Intervention Coordinator
carter@themetroschool.org
 - **WEP** - Betty Marshall, Records Secretary
marshall@themetroschool.org
- Complete the Summer Reading Project



Questions?



Admissions/Lottery

Mari Burgett

burgett.2@themetroschool.org

(614) 259-6639, ext. 1101

H.S. Dean of Students

Ashley Leslie

leslie@themetroschool.org

(614) 259-6639, ext. 1329

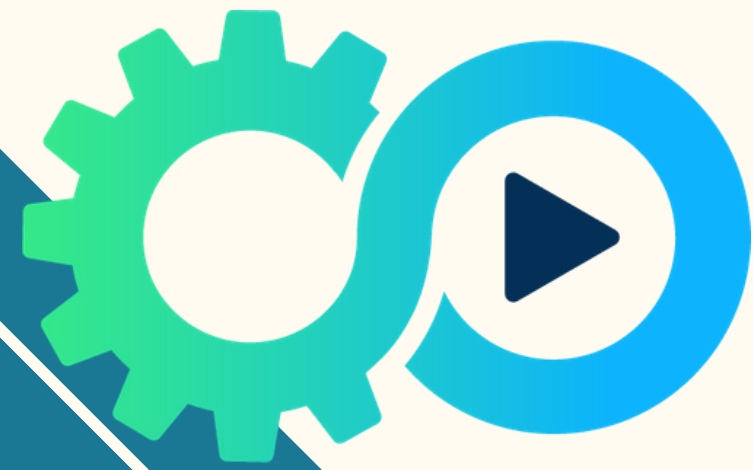
Intervention Coordinator

Lori Carter

carter@themetroschool.org

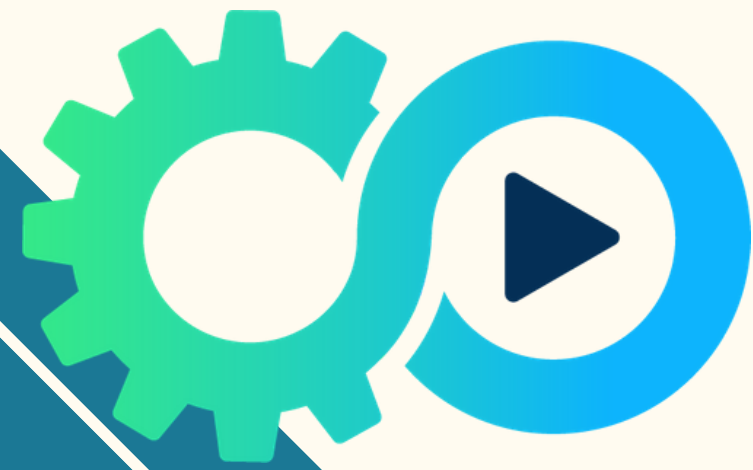
(614) 259-6639, ext. 1327

VISIT
WWW.THEMETROSCHOOL.ORG
FOR MORE INFORMATION



Thank you for joining us!

Stay with us once the presentation ends if you still have questions you need answered.



**You may log off or
stay online for
additional Q & A**