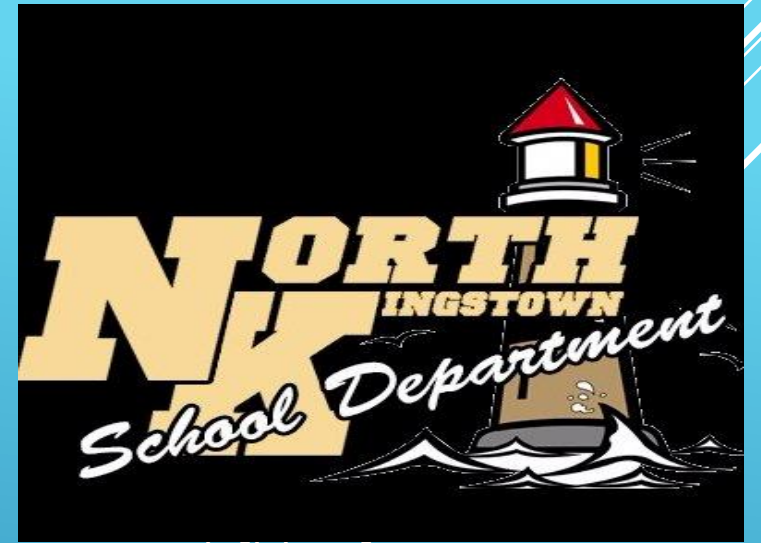


REOPENING NK

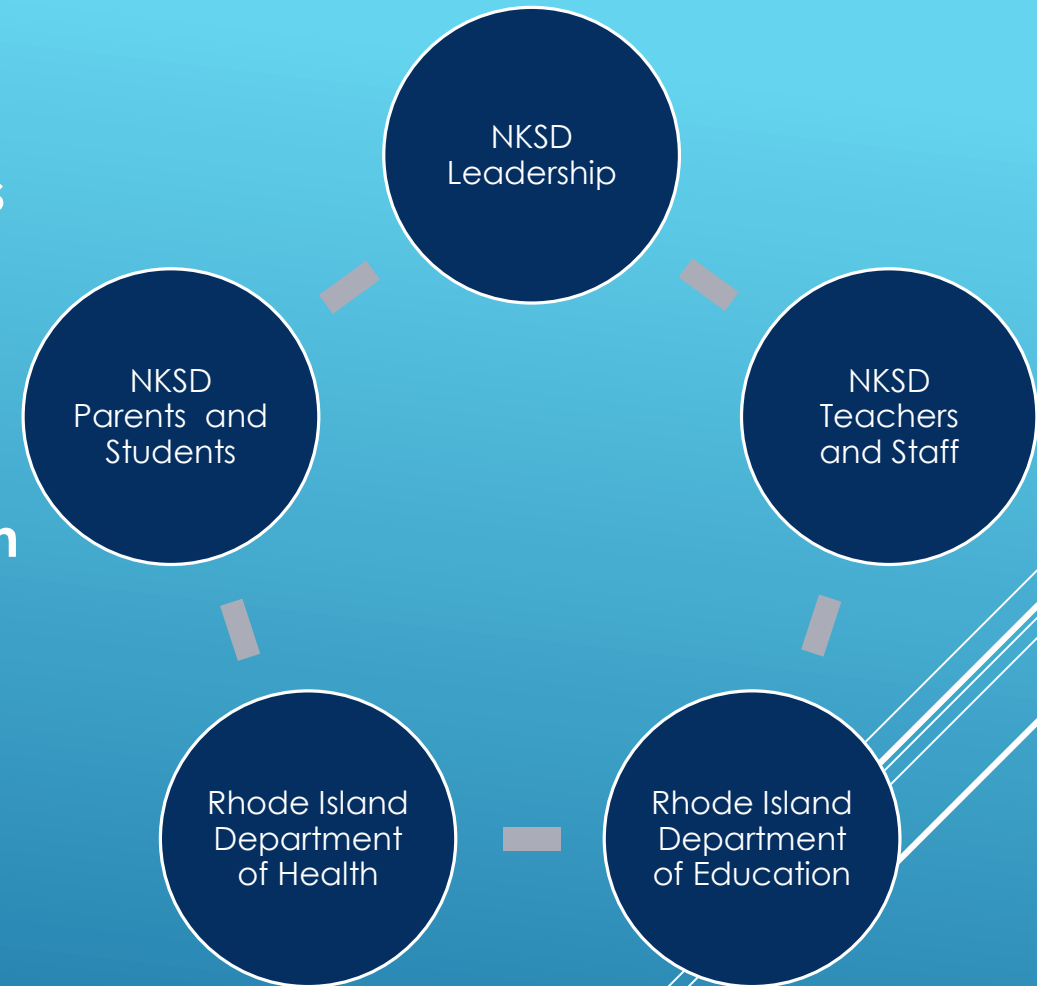


NORTH KINGSTOWN SCHOOL DEPARTMENT REOPENING PLAN

Community Presentation of Major Components

July 17, 2020

- ▶ Input has been collected from various constituents to produce NKSD Reopening Plans.
- ▶ Our vision is to provide all students with rigorous and meaningful learning and appropriate social/emotional support. NKSD programming will take form in four potential scenarios that include full in-person school sessions, hybrid plans for in-school and distance learning, limited in-person, and full distance learning as needed due to community health conditions and a possible resurgence of COVID-19.

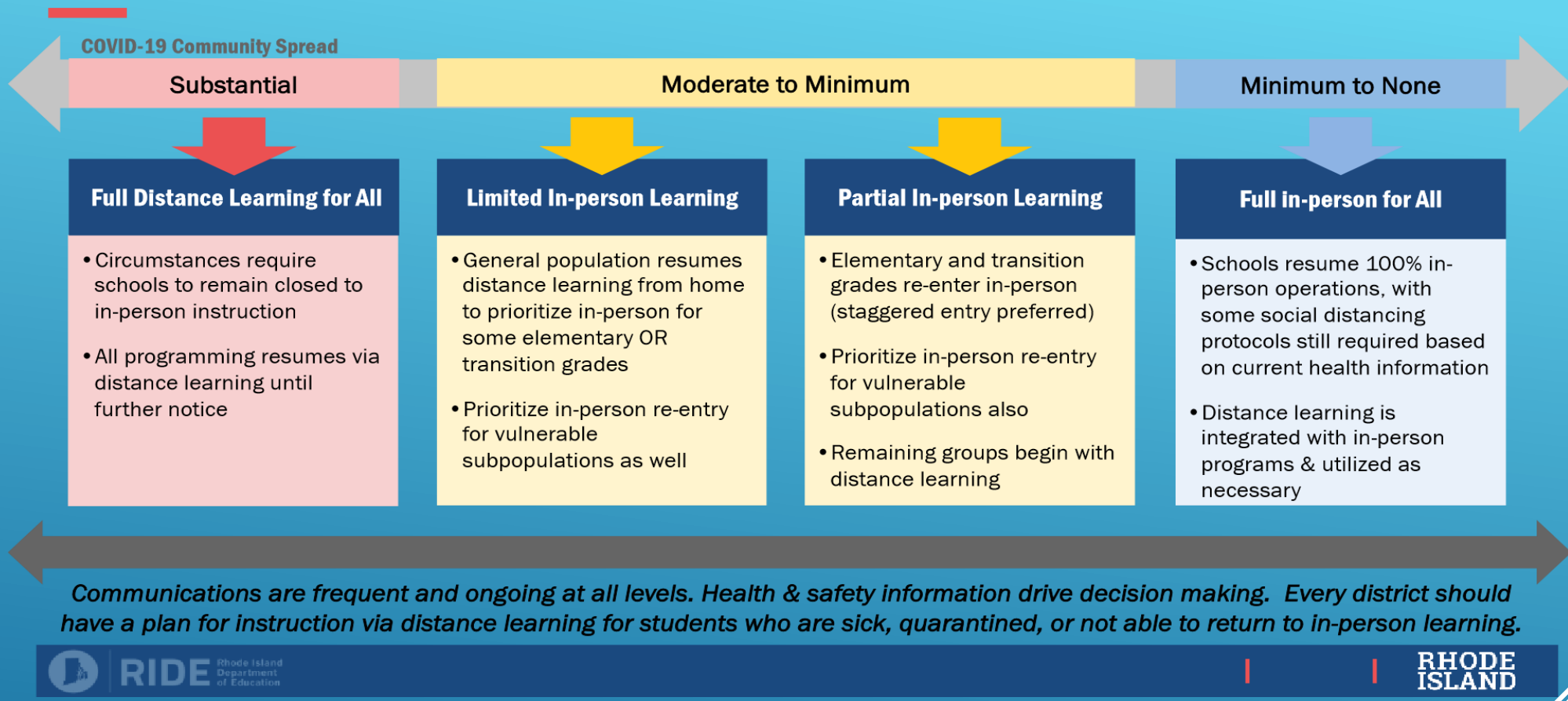


PLANNING PROCESS

- ▶ Health and Safety of Students, Staff, Families, and Community
- ▶ Creativity in Problem Solving
- ▶ Making the Most of District Resources
- ▶ A Spirit of Community, Patience, Understanding, Shared Sacrifice

VALUES





4 LEARNING SCENARIOS

- ▶ **Elementary and Middle:**
 - ▶ All students attend every day
 - ▶ Students and Staff Organized in Pods (Teams at Middle Schools)
 - ▶ Limited Interaction with Larger Groups
 - ▶ Modifications to Transportation
 - ▶ Change in Start Times at Hamilton El, DMS, and WMS (see slide 7)
- ▶ **High School:**
 - ▶ 50% of Students in School, Alternating A/B Days
 - ▶ In-Person Classes and Asynchronous Distance Learning Lessons
 - ▶ Students Take 4 Classes First Semester / Another 4 Classes Second Semester (4 x 4 Schedule)

NKSD FULL IN-PERSON SCENARIO

- ▶ Our expectation is that all students and staff will wear masks or face coverings. Exceptions for settings where people can easily and continuously maintain six feet of social distancing (per RIDE guidance).
- ▶ Emphasis on social distancing and regular hand washing.
- ▶ Elementary and Middle Classrooms (in stable group pods).
- ▶ HS Classroom Capacity at approximately 15 (no pods).
- ▶ No large gatherings in cafeterias, auditoriums, gyms, playgrounds, etc.
- ▶ Extracurricular/Athletics Programs To Be Determined per NKSD Capacity and RIDOH Guidelines

NKSD FULL IN-PERSON SCENARIO

- ▶ Middle and High School Students Share Morning Bus Run (7:15 Start for High School and Both Middle Schools).
- ▶ High School Return Run: 11:50am. MS Return Run 1:45pm.
- ▶ Modified MS/HS stops. NKSD will encourage car pooling, Junior and Senior Parking will be expanded.
- ▶ Elementary Runs Expanded from 2 to 3. Hamilton El (largest El) will have its own run and an 8am start time (2:20pm release). All other Els will start and end at their regular time. Limited or no change to regular elementary bus stops. NKSD encourages parent transport and car pooling.
- ▶ All students who commit to bussing are assigned to a bus and seat (current guidance). One student per seat. **Mask Wearing is Mandatory on Bus.**
- ▶ We do not anticipate any changes to Special Education Transportation at this time.
- ▶ Details on Transportation Options will be coming soon to all families.

NKSD FULL IN-PERSON SCENARIO: TRANSPORTATION

- ▶ Pre-K through Grade 12 attend on same weekly schedule: Monday Distance Learning, Tuesday through Friday alternating schedule 50% In Person / 50% Distance Learning (asynchronous lessons) (A-Tuesday/Thursday; B-Wednesday/Friday)
- ▶ No more than approximately 15 in any Classroom.
- ▶ Additional spacing on busses per RIDOH Guidelines.
- ▶ Opportunities for vulnerable populations (including special education students) to maintain full in-person instruction per RIDE guidance.

NKSD HYBRID / PARTIAL IN-PERSON SCENARIO

- ▶ Distance Learning For All Except Most Vulnerable Students.
- ▶ In-School Programming Organized Per RIDE guidance.

LIMITED IN-PERSON SCENARIO

- ▶ All Students in Distance Learning Mode
 - ▶ Everyday On-line Engagement with Teacher / Coursework
 - ▶ All Course Communication Via Canvas Learning Management System (Replaces Google Classroom)

NKSD FULL DISTANCE LEARNING SCENARIO

- ▶ Full K-12 Usage of Canvas Learning Management System
- ▶ Replaces Google Classroom for Course Communications
- ▶ Will Assist with Improved Coordination of Grade Level Resources and Learning Expectations
- ▶ Used in All Scenarios for All Students
 - ▶ Posting of Lesson Plans / Course Expectations
 - ▶ Access to all On-line Learning Resources
 - ▶ Submission and Grading of Student Work

CANVAS LEARNING MANAGEMENT SYSTEM (LMS)

- ▶ Coordinated Pre-K-12 Social/Emotional Programming
- ▶ Continued Professional Development for staff focused on the needs of students during pandemic
- ▶ Employee Assistance Program

SUPPORTING SOCIAL/EMOTIONAL HEALTH

Students who need to work from home for medical reasons or for family choice will continue to be assigned to their regular classroom and teacher. The student will be provided lessons via the Canvas LMS with periodic direct interaction with their teacher and other supports as available.

Information for a Year-round Distance Learning Academy, to be provided by the Rhode Island Department of Education (RIDE), is forthcoming for those in medically fragile situations. Parents will be informed about these options as they become known to NKSD.

DISTANCE LEARNING REQUESTS

- ▶ Rhode Island Department of Health and Governor Raimondo to provide “Playbook” for school departments’ response(s) if a COVID positive test result is communicated for students or staff.
- ▶ School Nurse-Teachers and Administrators will work directly with RIDOH to facilitate appropriate quarantining, contact tracing, and method/content of communication while maintaining confidentiality of the COVID positive person.

PROTOCOL FOR STUDENTS/STAFF TESTING POSITIVE

- ▶ Morning home screening for all students and staff every day. On-line communication tool.
- ▶ More details to come as school year approaches.
- ▶ Reopening RI Screening Tool

SCREENING STUDENTS / STAFF HEALTH

- ▶ Coordinated with RIDE Statewide Calendar for Students
- ▶ Includes late-August Professional Days for Faculty and Staff
- ▶ Calendar to be Ratified by NK School Committee, July 28

2020-2021 NKSD SCHOOL CALENDAR

- ▶ **NKSD Reopening Plan Due to RIDE, July 17**
- ▶ NKSD expects to modify and revise this plan per further RIDE/RIDOH Guidance.
- ▶ NKSD Plan will receive RIDE Feedback and will be Posted by RIDE, July 31
- ▶ Plan will be Updated Regularly as Needed.
- ▶ We expect the need for more feedback and input from the community. Pertinent plan information and related surveys of parents will be communicated separately by district, schools, teachers, special education, transportation, etc., as needed.

EVOLVING PLANS