

Coronavirus Relief (CRF) Funds

**Coronavirus Aid, Relief, and Economic
Security (CARES) Act**

**Elementary and Secondary School
Emergency Relief (ESSER) Funds**

Coronavirus Relief Funds (CRF)

\$ 957,310 Total*



\$ 68,895

Personnel Related - Academics



\$ 259,440

Personnel Related - Cleaning/Health/PPE/Safety



\$ 10,870

Personnel Related - Transportation



\$ 563,555

Non-Personnel Related -
Cleaning/PPE/Health/Safety



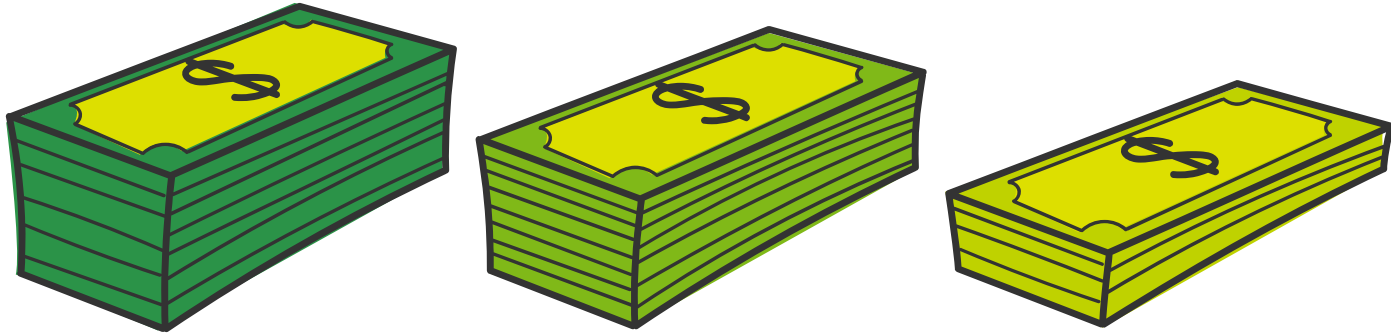
\$ 54,550

Non-Personnel Related - Transportation

***all funds already expended**

CARES (ESSER I)

\$ 456,031 Total*



Intended for COVID Response Efforts
Costs dating back to March 13, 2020

***all funds already expended**

ESSER II

\$ 2,347,456*



***Available through September 30, 2023**

Supplement v. Supplant

“Supplement” means to “build upon” or “add to”

“Supplant” means to “replace” or “take the place of”

Federal law prohibits recipients of federal funds from replacing state, local, or agency funds with federal funds.

Maintenance of Effort

Requirement that local education agencies (LEA) budget & spend the same amount of local and state funds year to year

Need to ensure the LEA is spending at least a minimum amount of non-Federal funds to educate its students. Federal funds cannot replace or reduce local and state funds used in past years to educate students.

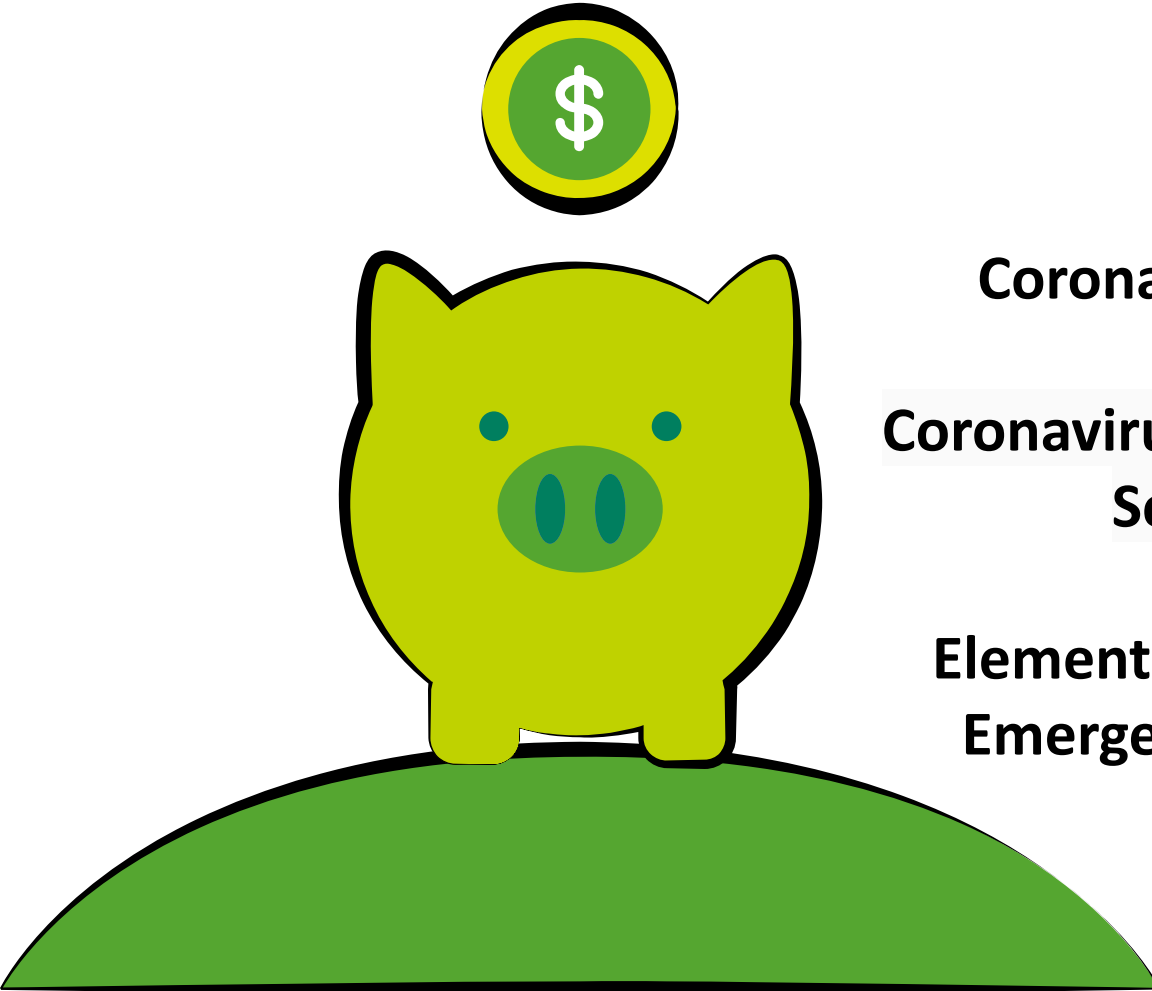
A potential consequence of failing to meet the Maintenance of Effort compliance standard is the reduction of funds in other grants (e.g. IDEA) provided to the school district and having to pay back the Federal funds that replaced local and state funding.

New ESSER II & III funds must be used for new purposes and programs.

- Addressing **learning loss** among students, including low-income students, children with disabilities, English learners, racial and ethnic minorities, students experiencing homelessness, and children and youth in foster care, of the local educational agency, including by: a) Administering and using **high-quality assessments** that are valid and reliable, to accurately assess students' academic progress and assist educators in meeting students' academic needs, including through differentiating instruction; b) Implementing **evidence-based activities** to meet the comprehensive needs of students; c) Providing **information and assistance to parents and families** on how they can effectively support students, including in a distance learning environment; d) **Tracking student attendance and improving student engagement in distance education**; e) **Tracking student academic progress** with evaluating and comparing to pre-pandemic grades and progress to identify students that experienced learning loss.
- Providing principals and others school leaders with the **resources** necessary to address the needs of their individual schools.
- Activities to address the **unique needs** of low-income children or students, children with disabilities, English learners, racial and ethnic minorities, students experiencing homelessness, and foster care youth, including how outreach and service delivery will meet the needs of each population.

- Developing and implementing **procedures and systems to improve the preparedness and response** efforts of local educational agencies.
- **Training** and professional development for staff of the local educational agency on **sanitation** and minimizing the spread of infectious diseases.
- Purchasing **supplies to sanitize and clean the facilities** of a local educational agency, including buildings operated by such agency.
- **Planning for, coordinating, and implementing activities during long-term closures**, including providing meals to eligible students, providing technology for online learning to all students, providing guidance for carrying out requirements under the IDEA and ensuring other educational services can continue to be provided consistent with all Federal, State, and local requirements.
- Purchasing **educational technology** (including hardware, software, and connectivity) for students who are served by the local educational agency that aids in regular and substantive educational interaction between students and their classroom instructors, including low-income students and children with disabilities, which may include assistive technology or adaptive equipment.

- Providing **mental health services and supports**.
- Planning and implementing activities related to **summer learning and supplemental after school programs**, including providing classroom instruction or online learning during the summer months and addressing the needs of low-income students, children with disabilities, English learners, migrant students, students experiencing homelessness, and children in foster care.
- **School facility repairs and improvements to enable operation of schools to reduce risk of virus transmission and exposure to environmental health hazards, and to support student health needs.**
- Inspection, testing, maintenance, repair, replacement, and upgrade projects to **improve the indoor air quality in school facilities**, including mechanical and non-mechanical heating, ventilation, and air conditioning systems; filtering, purification and other air cleaning; fans, control systems, and window and door repair and replacement.
- **Other activities** that are necessary to maintain the operation of and continuity of services in local educational agencies and continuing to employ existing staff of the local educational agency.



Coronavirus Relief (CRF) Funds

**Coronavirus Aid, Relief, and Economic
Security (CARES) Act**

**Elementary and Secondary School
Emergency Relief (ESSER) Funds**

ESSER III

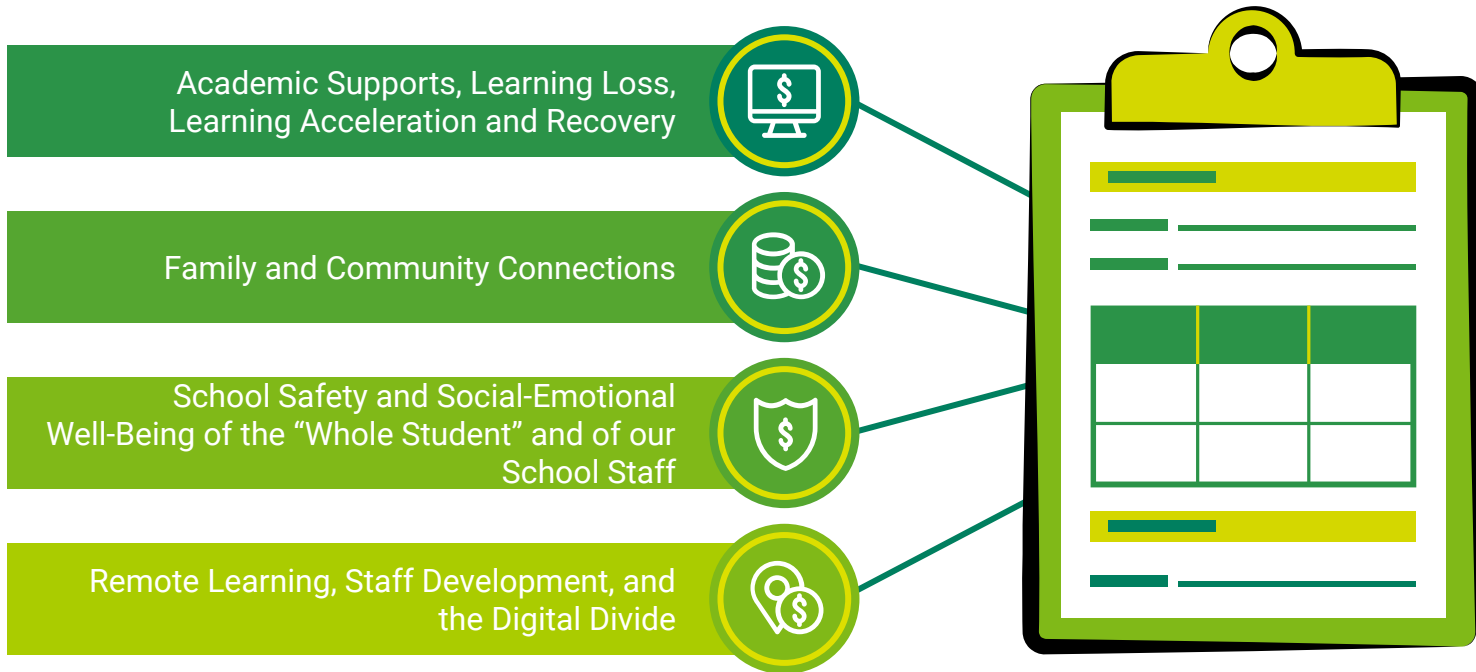
Preliminary Estimate: \$ 5,830,453?



***Available through September 30, 2023/2024**

ESSER III

Preliminary Estimate: \$ 5,830,453?



***Available through September 30, 2023/2024**