



Bentonville Schools

Where Excellence Lives



Arkansas School Board Presidents & Vice Presidents: Leadership from the Chair

December 12, 2019 | Eric White, Bentonville Schools
BOE President

The Parliamentary Officer is Critical

From planning the agenda to articulating priorities to the community, the board president can help ensure an optimized board, leveraging the strengths of all members and setting priorities.



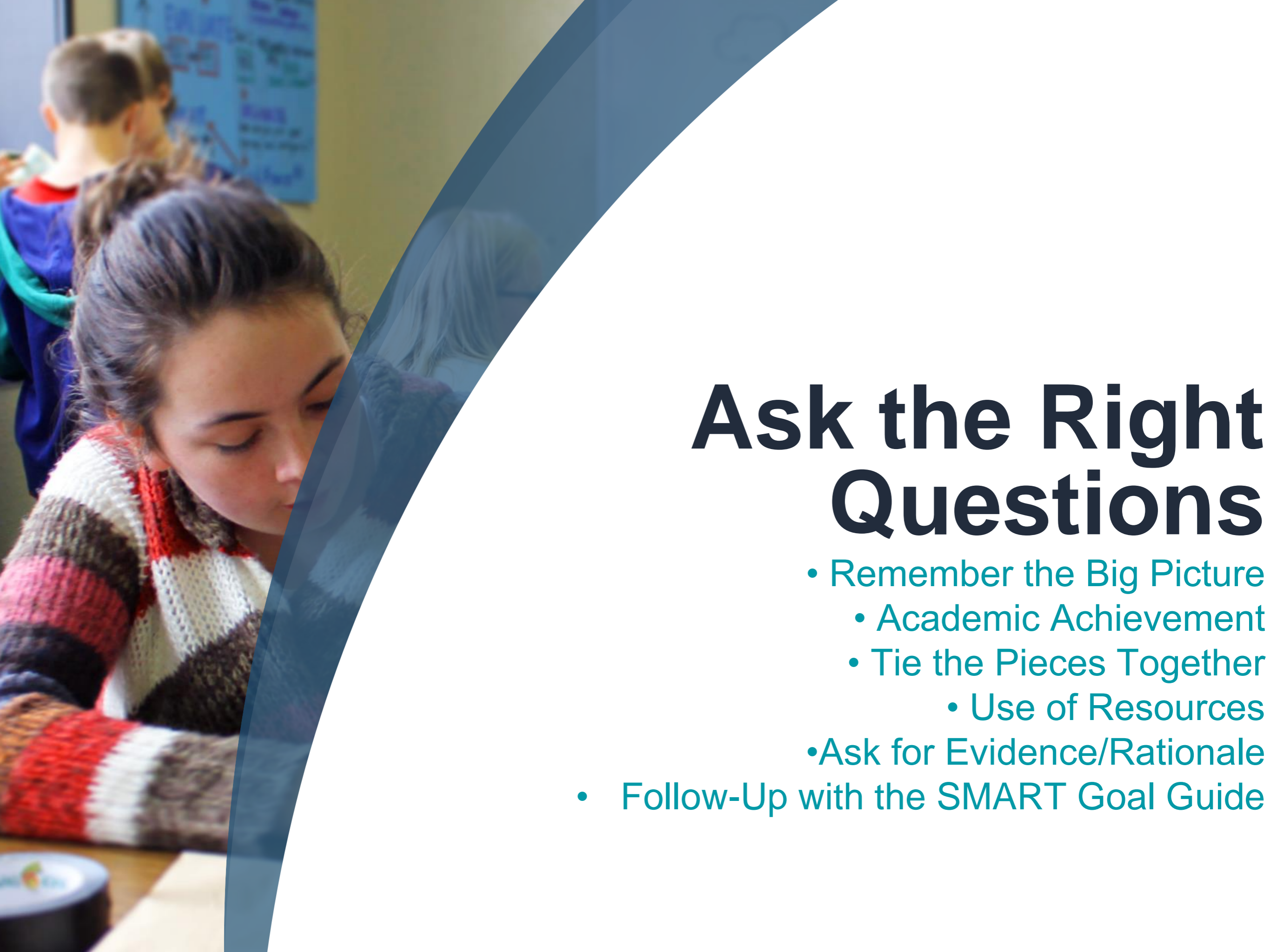


12 Step Guide

- Know Your Board
- Understand Collective Knowledge is Superior to any Individual, Including You
- Establish Collaborative Tone
- General Schwarzkopf: When in Charge, Take Charge
- Include the Group in Decision Making
- Listen
- Earn Your Board's Trust
- Be Prepared
- Plan Board Development Opportunities
- Build Board & Superintendent Relationship
- Build Good Relationships 360 Degrees
- Stay Cool Under Fire

Board President Roles & Responsibilities

- Lead through Efficient & Effective Parliamentary Procedure
- Manage Discussions Fairly
- Keep the Focus on Mission, Vision & Goals
- Focus on Continuous Improvement



Ask the Right Questions

- Remember the Big Picture
 - Academic Achievement
 - Tie the Pieces Together
 - Use of Resources
- Ask for Evidence/Rationale
- Follow-Up with the SMART Goal Guide

S.M.A.R.T

S - Specific

M – Measureable

A – Action Oriented

R – Reasonable

T – Time Sensitive

A woman with dark hair tied back, wearing a red, white, and brown striped sweater, is looking down at a document on a table. In the background, other people are visible in a meeting room setting. A large blue semi-transparent graphic is overlaid on the right side of the image.

Board Organization & Configuration

Become Effective Without Committees

Standing & Ad-HOC Committees Introduce Risk

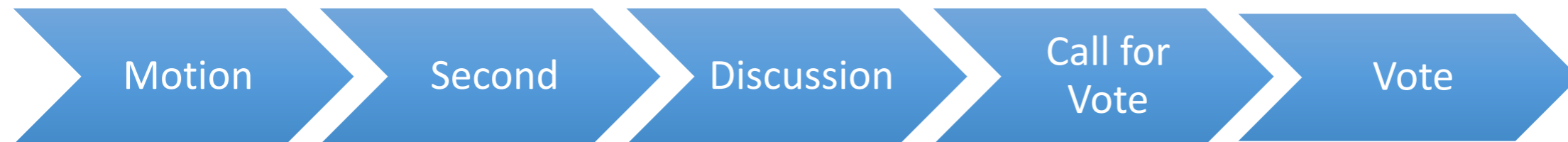


Set the Agenda

- Establish Process for Agenda
- Set Expectations for Reports, Presentation & Information
- Establish Process for Board Input
- Board Culture & Climate



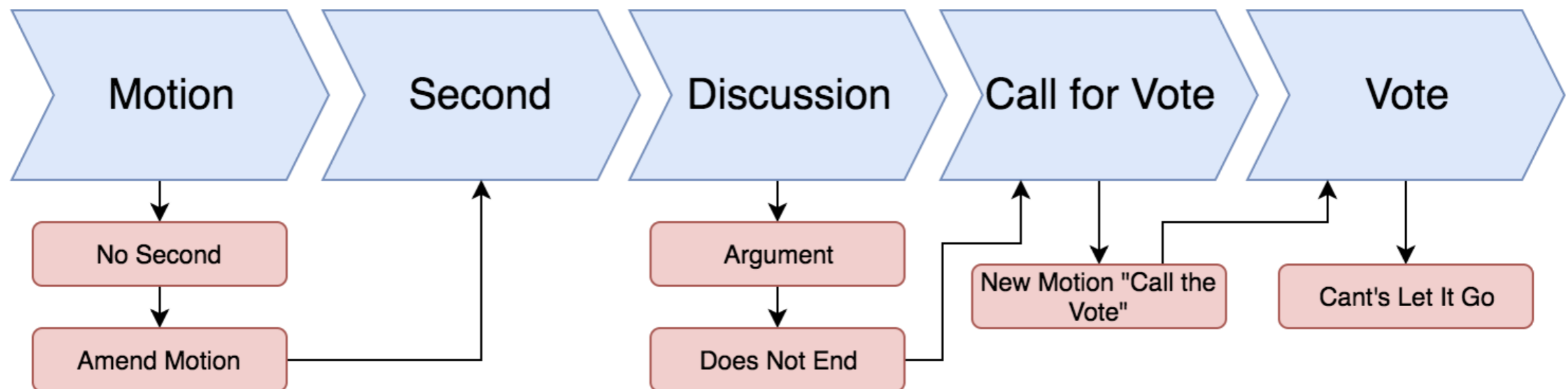
Discussion Flow



Discussion Flow Must Always Follow These Steps



Discussion Flow- *“What Happens If”*



What Would You Do?



What Would You Do?





10:01

44°

8

CAM 11

CAM 12

Emergency Cam

CAM 13



Bentonville
Schools