



K

HILANDER highlights

WINTER 2020



Welcome to our new
**WALLACE
ELEMENTARY!**

Old school made new, thanks to bond vote

When students come back from the winter break, they'll be coming back to a brand new school, thanks to YOU. This building wouldn't be possible without the support of our community. By voting YES for Kelso Schools, you have given South Kelso students an opportunity to learn in a modern, state-of-the-art facility that will serve our community for generations.



58,000
sq ft building
4,000 sq ft
of covered play

Hilander Highlights is a publication of Kelso School District to keep community members informed about our schools. A print version will be mailed four times a year. You can read other issues online at bit.ly/ksd-hh.



A SNEAK PEEK INSIDE



Community: Inside and Out

- Each grade level is grouped around a shared learning area, creating small communities within the school
- Library, gym, commons, and stage can be opened to the public for community uses after hours, while the rest of the school is secure
- Large garden and outdoor classroom with benches and raised planters



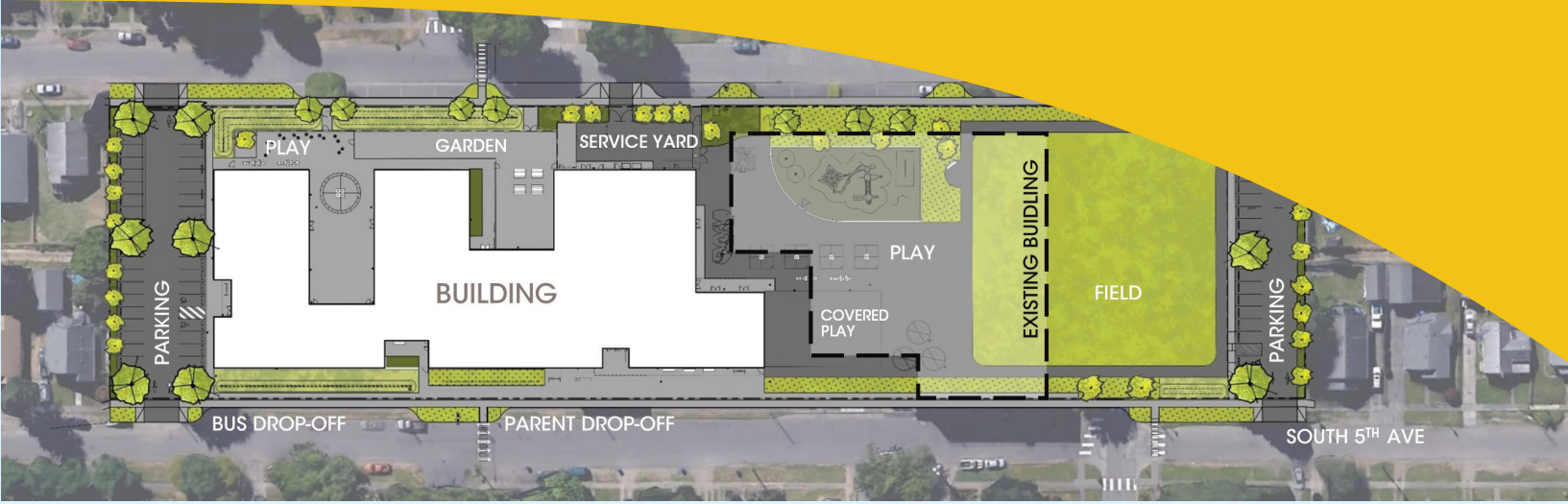
Campus Safety

- Secure vestibule design ensures all visitors go through office before entering school
- Part of a central, district-wide security monitoring system with remote lockdown capabilities
- Secure entries with card reader access and camera systems
- Rooms designed to allow for occupants to be out of the line of site during a lockdown



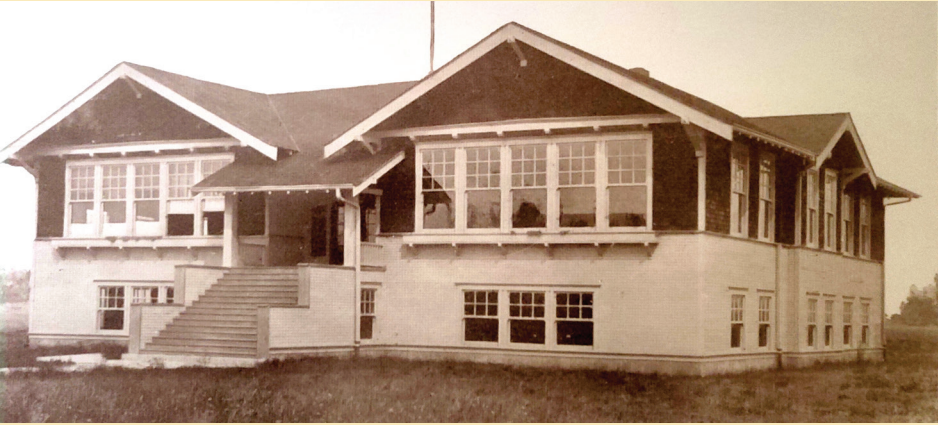
Environmental Sustainability

- Meets Washington Sustainable Schools Protocol
- Made with Low Volatile Organic Compound materials
- At least 20% of materials are from within 500 miles
- On-site water filtration through rain gardens and bio-swales removes contaminants before water enters rivers and lakes
- Drought-tolerant, native plants



WALLACE HISTORY

Wallace Elementary has been a part of Kelso Schools for **over 100 years**. The school is named after 1800's pioneer **Victor Wallace**, a machinist, cabinetmaker, gunsmith, and millwright who traveled west from Missouri on the **Oregon Trail in 1847**. It is on the land he settled in 1850 where the school has been built and rebuilt.



1912 (upper left)

The first Wallace Elementary School, a four-room structure made of wood, was built. It housed 60 students in grades 1 through 4 with 2 teachers and was heated by 30 tons of coal.

1923 & 1926 (lower left)

Four classrooms were added in 1923, another 4 in 1926 for a total of 12 classrooms.

1942 (right)

The old building was demolished and a new brick building, costing \$102,000, took its place. Wallace's student count jumped to 530.

1955

A four-room primary addition, costing \$62,404, was added to the south end of the first floor.

1980

Wallace was remodeled. Improvements, costing \$944,710, included strengthening the walls and roof.

2018

Voters passed a \$98.6 million bond, which included \$28.5 million to replace the unreinforced and seismically unsound brick Wallace building.

2019

Construction of the third Wallace Elementary School on the same parcel of Victor Wallace's land began in June.

2020-21

The new Wallace was completed, and the original sign and bricks will be salvaged from the old building to be incorporated in the new school.



SCHOOL BOARD:
Mike Haas, President
Karen Grafton, Vice President
Jeane Conrad
Ron Huntington
Leah Moore

SUPERINTENDENT: Mary Beth Tack

NON-DISCRIMINATION STATEMENT
The Kelso School District is an equal opportunity employer and is in compliance with state and federal anti-discrimination regulations and other requirements.

CHILD FIND INFORMATION
Kelso School District will ensure that all students with disabilities who are eligible from birth through 21 years of age, residing within our attendance area, have available to them a free and appropriate public education in the least restrictive environment. You can initiate a referral through your local schools or call us at 360-501-1904.



601 Crawford Street
Kelso, WA 98626
360.501.1900
www.kelso.wednet.edu

NONPROFIT
ORGANIZATION
U.S. POSTAGE
PAID
KELSO, WA 98626
PERMIT NO. 40

ECRWSS

Postal Patron

FUN FACTS

about the new Wallace



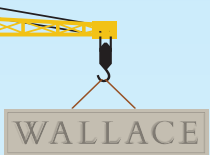
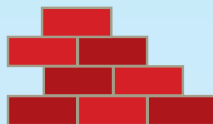
The spaces in the building were laid out in a series of work sessions with teachers and staff from Wallace.

The building shape creates a number of courtyards, providing views and semi-sheltered outdoor spaces.



All general classrooms have direct north or south daylight, which minimizes glare and optimizes the quality of daylight.

Thousands of bricks from the 1940 school building will become the benches and pavers of the new building's entry plaza.



The original WALLACE sign from above the entry will be saved and incorporated.

The exterior of the building uses colors from the old school and homes in the area, creating a civic expression of the neighborhood.



virtual ribbon cutting

Watch the district and Wallace websites for information on the upcoming virtual ribbon cutting and please join us!



WHAT THE WOLVES ARE SAYING

I can't wait for the new **STEM room**, so I can do **science experiments**.

– Paityn, 5th grade



My classroom is on the **second floor**!

– Kyle, 2nd grade



I'm excited about the **new gym**.

– Axiom, 4th grade