



HILANDER highlights

SPRING 2021

Welcome to our new
**LEXINGTON
ELEMENTARY!**

A brand new Kelso school

In Fall 2021, hundreds of Kelso students will enter the halls of a brand new elementary school, thanks to YOU. This building would not be possible without the support of our community. By voting YES for Kelso Schools, you have given Lexington-area Kelso students an opportunity to learn in a modern, state-of-the-art facility that will serve our community for generations.



105,000

sq ft building

6,400 sq ft
of covered play

Hilander Highlights is a publication of Kelso School District to keep community members informed about our schools. A print version will be mailed four times a year. You can read other issues online at bit.ly/ksd-hh.



A SNEAK PEEK INSIDE

THANKS, TEAM!

As the construction on our two new elementary schools (Wallace and Lexington) draws to a close, we'd like to give special thanks to the teams that campaigned for, designed, built, and managed the entire process: Citizens for Kelso Schools, Integrus Architecture, FORMA Construction, and ESD 112's Construction Services Group (CSG). Their work over the last few years has been unwavering and exceptional, and their efforts will be enjoyed for generations to come.



Community: Inside and Out

- Each grade level is grouped around a shared learning area, creating small communities within the school
- Gym, commons, and stage can be opened to the public for community use after hours, while the rest of the school is secure
- Large garden and outdoor classroom with benches and raised planters



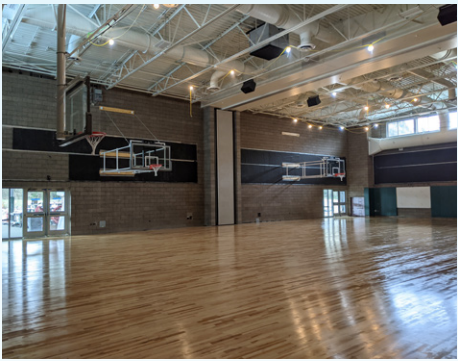
Campus Safety

- Secure vestibule design ensures all visitors enter through office
- District-wide security system with remote lockdown capabilities
- Secure entries with card reader access and camera systems
- Rooms designed to allow for occupants to be out of the line of sight during a lockdown
- Traffic Management Plan (TMP) maximizes safe pedestrian and vehicle traffic



Environmental Sustainability

- Meets Washington Sustainable Schools Protocol
- Made with Low Volatile Organic Compound materials
- At least 20% of materials are from within 500 miles
- On-site water filtration through rain gardens and bio-swales removes contaminants before water enters rivers and lakes
- Drought-tolerant, native plants



BITTERSWEET BEGINNINGS

While there is a lot of excitement around the brand new Lexington Elementary School, opening it means closing two others: Beacon Hill and Catlin. Just as there have been teams of people to plan, design, and organize the building of schools, Beacon Hill and Catlin each have a team dedicated to the closure of their beloved elementary school.

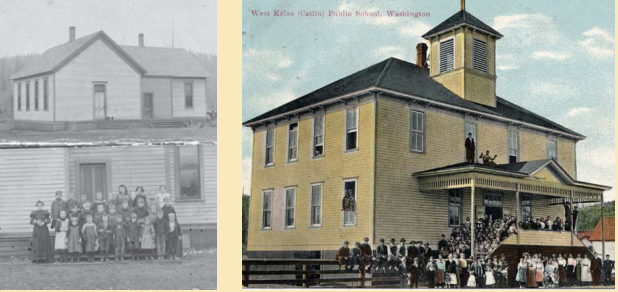
Watch each school's website in June for information on closing and commemorative events and videos.

Meanwhile, here's a little about these two historic Kelso schools.



BEACON HILL ELEMENTARY

- Beacon Hill was built in 1966-1967.
- The school was named after the hill it was built on; which got its name because there was a non-directional beacon at the top of the hill. The beacon was later moved to Rocky Point in Kelso.
- Unique to this school: Beacon Hill has an Extreme Team that was first formed in the 1996-97 school year. The Extreme Team is a traveling team of 1st-5th graders who Double Dutch jump rope, juggle, tumble, and unicycle!



CATLIN ELEMENTARY

- The first Catlin school was built in 1884 (top left).
- The second Catlin, then referred to as West Side Building, was built in 1900 (top right).
- In 1909, the school name was changed to Catlin Building after Kelso city limits were extended to include the school.
- In 1912, the third Catlin (below left) was built on property bought from Mary J. Catlin on W 8th N. The School Board agreed to keep the name of Catlin in honor of the Catlin family. Seth Catlin, Mary's father-in-law, settled there in 1850.
- Fourth and current Catlin Elementary (below) was built in 1947 on Long. The 1912 Catlin building and property were sold in 1948 to the Cowlitz County Dairymen's Association and a creamery was built on the site.



SCHOOL BOARD:
Mike Haas, President
Jeane Conrad, Vice President
Karen Grafton
Ron Huntington
Leah Moore

SUPERINTENDENT: Mary Beth Tack

NON-DISCRIMINATION STATEMENT
The Kelso School District is an equal opportunity employer and is in compliance with state and federal anti-discrimination regulations and other requirements.

CHILD FIND INFORMATION
Kelso School District will ensure that all students with disabilities who are eligible from birth through 21 years of age, residing within our attendance area, have available to them a free and appropriate public education in the least restrictive environment. You can initiate a referral through your local schools or call us at 360-501-1904.



601 Crawford Street
Kelso, WA 98626
360.501.1900
www.kelso.wednet.edu

NONPROFIT
ORGANIZATION
U.S. POSTAGE
PAID
KELSO, WA 98626
PERMIT NO. 40

ECRWSS

Postal Patron

FUN FACTS about Lexington

The spaces in the building were laid out in a series of work sessions with teachers and staff from Beacon Hill and Catlin.



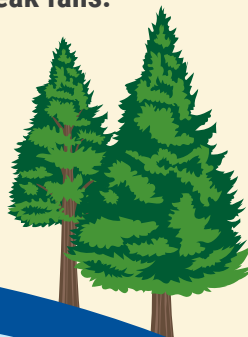
The building shape and orientation separates the site into public and private sides, creating places out of the way of traffic that are safe for outdoor play and gardening.

There are two Science, Technology, Engineering, Arts, and Math (STEAM) classrooms to better prepare our youth with these important skillsets.



Modern playgrounds in both the kindergarten and upper grade level spaces encourage movement, socializing, and motor skill development, with cushioned ground below to help break falls.

The green exterior reflects the school colors (hunter green, black, and silver) and the forest behind the school, and is seen throughout the interior on floors, walls, and signage.



Did you know?

This isn't the first Lexington school.

According to the Cowlitz County Historical Museum, the original Lexington, which would have been K-8th grade, was probably built in the 1920s and was where the Lexington Fire Station is now.

Photo: Lexington School, circa 1930s, Cowlitz County Historical Museum



CREATING OUR CULTURE

Facilitated by PointNorth, a team of 21 Kelso School District staff leaders engaged in several workshops to plan the desired internal culture for the new Lexington Elementary School. Their work resulted in a Lexington Leadership Team Charter and a community survey that supported the development of the final Lexington vision, mission, and beliefs.

VISION: The vision of Lexington Elementary School is to prepare students to be life-long learners and contribute to society as productive, kind, and compassionate citizens.

MISSION: At Lexington Elementary #WEARE empowering students to fulfill their dreams and goals as they soar on their educational path towards college, career, and community readiness.

BELIEFS: At Lexington Elementary School, we believe in celebrating learning, growth, and achievement. Through perseverance and a passion for learning, all students will **SOAR!**

- Super Respectful
- Outstandingly Responsible
- Always Safe
- Really Kind

