

**GERMANTOWN SCHOOL DISTRICT
NOTICE OF BOARD OF EDUCATION MEETING**

**District Administrative Offices - Board Room
N104 W13840 Donges Bay Road
Germantown, WI 53022**

**November 13, 2017
7:00 p.m.**

AGENDA

- I. Meeting Called to Order and Pledge of Allegiance
 - A. Official Meeting Notification
 - B. Roll Call

- II. Approval of Agenda

- III. Citizen Comments:

Community Members are invited to share their questions, comments, or concerns with the School Board. When speaking, citizens should state their name for the record. The presentation time frame shall be determined by the Board President once an indication of the number of people wishing to speak is made. Wisconsin law authorizes the school board to receive information from members of the public. Where possible, the Board will answer factual questions immediately or may provide a written response if information is not available. If a response would involve discussion of Board Policy or decisions which might be of interest to citizens not present at the meeting, the Board may place the item on a future meeting agenda. **Comments which may be injurious to school district personnel or other individuals will not be allowed.**

- IV. Approval of Minutes
 - A. October 23, 2017 Board of Education

- V. Correspondence, Reports, and Information Items
 - A. Student Representative Report
 - B. Update on sale of district property adjacent to Kinderberg Park
 - C. Washington County Request Regarding Youth Risks Behavior Survey
 - D. Growth Mindset Update

- VI. Building Committee
 - A. Discussion and possible action to approve Trane Controls upgrade.
 - B. Update on items discussed at November 13, 2017 committee meeting.

- VII. Unfinished Business
 - A. Discussion and action to approve the Technology Education Equipment Acquisition proposal.

- VIII. New Business
 - A. Discussion and action to approve donations.
 - B. Discussion and action to approve high school band overnight travel request.
 - C. Discussion and action to approve high school cheer team overnight travel request.
 - D. Discussion and possible action to add high school honors pre-calculus.

- IX. Closed Session: The Board will entertain a motion to convene in closed session pursuant to Section 19.85(1)(c) and (f), as well as Section 118.125 of the Wisconsin Statutes, as appropriate, to discuss the status of an employment investigation and related pupil issues, and to confer with legal counsel and administration representatives regarding same.

- X. Adjourn

GERMANTOWN SCHOOL DISTRICT
GERMANTOWN, WISCONSIN 53022
MINUTES OF THE BOARD OF EDUCATION
October 23, 2017

1. The meeting of the Board of Education was called to order by Board President Bob Soderberg in the District Office Board Room at 7:24 p.m. Superintendent Jeff Holmes read the official meeting notification. Roll call: Soderberg – yes, Loth – yes, Borden – yes, Barney – yes, Spies – yes, Larson – yes, Medved – absent (excused).
2. Motion by Larson, second by Borden to approve the agenda. Motion carried.
3. Motion by Barney, second by Spies to approve the October 9, 2017 Board meeting and closed session minutes. Motion carried.
4. Building principals presented Building Improvement Plans to the Board.
5. Middle school guidance counselor Becky Wittemann and high school guidance counselor Perry Benz provided an Academic and Career Planning report to the Board.
6. The Board discussed district branding and the opportunity to pursue significant opportunities now with the passing of the referendum and all of the construction and improvements in the district. Jeff Holmes indicated the leadership team will get started and will develop a timeline to begin no later than January 2018.
7. Transportation Committee Chair Tom Barney updated the Board on discussion that took place at the October 16, 2017 committee meeting including elementary attendance boundaries and the possibility of using GuideK12 software.
8. Recommendation from Insurance Committee to renew life and disability insurances with National Insurance Services at a zero percent increase for the period effective January 1, 2018 through December 31, 2018. Motion carried.
9. Recommendation from Insurance Committee to offer three employee health insurance options with Option 2 designated as the Default Plan with Plans 1 and 3 designated as Optional Plans. Motion carried.
10. Recommendation from Insurance Committee to standardize the cash-in-lieu amount among all employee groups at \$4,500 effective January 1, 2018. Motion by Spies, second by Barney to amend the recommendation and change the effective date to January 1, 2019. Vote on original recommendation to standardize the cash-in-lieu amount among all four employee categories at \$4,500 amended to be effective January 1, 2019 was carried.
11. Recommendation from Personnel Committee to approve the staff handbooks with the removal of the cash-in-lieu of insurance dollar amount that was stated in each employee group chapters. Motion carried.
12. Recommendation from Personnel Committee to approve co-curricular coaching contracts. Motion carried.
13. Recommendation from Finance Committee the approve the 2017-2018 final budget and tax levy as presented and adjust the accounts as appropriate on the report identified as the adoption format for final submission to the Department of Public Instruction as required and certify the tax levies to the municipalities accordingly, Motion carried.

14. Recommendation from Finance Committee to approve the purchase of a computer storage server, VMware and accessories from RMM Solutions in an amount not to exceed \$77,640.28 to be funded out of the appropriate General Fund 10 – Information Technology accounts. Motion carried.
15. Finance Committee Chair Michael Loth updated the Board on remaining items discussed in committee including Germantown TID 7 discussions with Village Administrator Steven Kreklow and the referendum balance.
16. Motion by Spies, second by Larson to approve 6th and 8th grade literature circle books. Motion carried.
17. Motion by Larson, second by Barney to approve nine Destination Imagination team manager contracts. Motion carried.
18. Board Member Spies left the meeting at this time (8:30 p.m.).
19. Motion by Larson, second by Borden to proceed with the technology education equipment acquisition proposal. Motion carried.
20. Motion by Barney, second by Larson to increase the contribution rate for vision insurance for the administrator/non-voluntary group to 7% to align with current dental and health insurance contributions. Motion carried.
21. Motion by Barney, second by Larson to approve the addendum to the original fee agreement with Associated Financial Group, LLC. Motion carried.
22. Motion by Barney, second by Borden to accept a 2017 Winter Slip/Falls grant in the amount of \$2,500 from SFM Mutual Insurance Company for new Track Off Mats in the district and a grant in the amount of \$1,341 from the Milwaukee Society of Plastic Engineers Education Foundation to Kennedy Middle School on behalf of grant applicant Jeff Thielke, and thank the donors for their generosity. Motion carried.
23. Motion by Borden, second Barney to approve a 1.0 limited-term teacher contract for Gina Lupi at \$16,637.74. Motion carried.
24. The Board discussed the Village of Germantown TID 7 proposal. Director of Business Ric Ericksen was appointed by Board President Soderberg at a previous meeting to act as the District liaison, and will need Board guidance on the District's position to take to upcoming Village meetings regarding TID 7.
25. Motion by Larson, second by Barney to adjourn, Motion carried.

Jayne Borst
Recording Secretary

Lester Spies
School Board Clerk

GERMANTOWN SCHOOL DISTRICT

TO: Board of Education

TOPIC: YRBS Documents

FROM: Jeff Holmes

BOARD MEETING: November 13, 2017

DATE: November 9, 2017

AGENDA ITEM: V. C.

BACKGROUND: Washington County is requesting that Germantown School District administer the Youth Risk Behavior Survey to its Grade 9-12 student body. Documents relating to that request are attached to this background sheet for Board consideration that you may relay any concerns regarding the survey and its administration to our students. Washington County officials have assured us that, when results are released, those results will not be identifiable to any particular high school within the County.

RECOMMENDATION: Information only at this time; based on the outcome of November 13 conversations, a formal recommendation will be brought to the Board at the November 27 meeting.



Five Counties for Tobacco-Free Living



Dear School District Administrators,

The Washington Ozaukee Public Health Department , the INVEST health coalition of Ozaukee County and the Well Washington County health coalition are interested in working with county school districts to implement the Youth Risk Behavior Surveillance System, informally known as YRBS, in both Ozaukee and Washington Counties. The YRBS is a data collection tool that monitors six types of health-risk behaviors which contribute to the leading causes of death and disability. The purpose of the YRBS is to determine the prevalence of health behaviors, whether those health behaviors change over time, examine the cross occurrence of health behaviors and provide comparable data within the state and nation. The YRBS was developed by the Center for Disease Control and Prevention, is used across the nation and is considered the best and most widely used evidenced-based data collection tool for youth. Every YRBS question has been researched and the rationale and data to support the rationale is available online and can be provided.

The Washington Ozaukee Public Health Department provides the leadership and infrastructure for the two community-wide coalitions. The coalitions in both counties are made up of local leaders of non-profits, businesses, school districts, hospital systems, universities, technical colleges, and community members who are engaged in improving the health of our communities. Coalition focus areas are obesity, mental health, alcohol and other drugs (including opiates and heroin), tobacco and worksite wellness. The coalition’s work is focused on system change to assure the places we live, work and play are the best in Wisconsin and the nation.

Since the inception of our community coalitions we have been challenged to collect comprehensive youth data to inform our programs and interventions. Our hope is to collect countywide data for both Ozaukee and Washington Counties and use the information we collect to identify the needs in our counties and how to best address them. Through the collective effort of our government agencies, hospital systems, non-profits and school districts we intend to address any health needs or disparities brought to light and change the environment and culture we live in to assure our children are living in the healthiest communities possible.

The partnership agreement for the YRBS is outlined below:

School Districts agree to:

1. Provide a school district YRBS administrator.
2. Identify school district specific questions.
3. Administer the YRBS every two years, to all high school students.
4. Contribute their aggregate data to a county-wide YRBS data set.

The Washington Ozaukee Public Health Department agrees to:

1. Facilitate YRBS implementation in each school district.
2. Provide the site administrator for both Washington and Ozaukee Counties.
3. Provide technical assistance to school districts as needed.
4. Produce a county-wide report of aggregate school district data.
Only aggregate data will be reported. No school district specific data will be released by the county or partners.
5. Provide leadership for both county health coalitions.

The INVEST Community Health Coalition and the Well Washington County Coalition agree to:

1. Research appropriate interventions to address areas of concern identified by the YRBS.
2. Provide technical assistance to school districts implementing evidence based interventions.
3. Provide collective, community based support to implement interventions.

School Administrator Name
School Administrator
School
email
Phone

Kirsten Johnson, MPH, CPH, CHES
Director/Health Officer
Washington Ozaukee Public Health Dept.
kjohnson@washozwi.gov
262.284.8170

Amanda Wisth, MPH, CHES
Public Health Educator/Coalition Coord.
INVEST/ Well Washington County
amanda.wisth@washozwi.gov
262.335.4462

Signature: _____ Date: _____
Administrator Name, School Administrator, School District

Signature: _____ Date: _____
Kirsten Johnson, Director/Health Officer, Washington Ozaukee Public Health Department

Signature: _____ Date: _____
Amanda Wisth, Public Health Educator/Coalition Coordinator, INVEST/Well Washington County

Well Washington County
2017 Youth Risk Behavior Survey – High School Questionnaire

Revised 10.30.2017

1. How old are you?
 - a. 12 years old or younger
 - b. 13 years old
 - c. 14 years old
 - d. 15 years old
 - e. 16 years old
 - f. 17 years old
 - g. 18 years old or older

2. What is your sex?
 - a. Female
 - b. Male

3. In what grade are you?
 - a. 9th grade
 - b. 10th grade
 - c. 11th grade
 - d. 12th grade
 - e. Ungraded or other grade

4. Are you Hispanic or Latino?
 - a. Yes
 - b. No

5. What is your race? (Select one or more responses.)
 - a. American Indian or Alaska Native
 - b. Asian
 - c. Black or African American
 - d. Native Hawaiian or Other Pacific Islander
 - e. White

6. During the past 30 days, on how many days was your physical health not good? (Physical health includes physical illness and injury.)
 - a. 0 days
 - b. 1 day
 - c. 2 days
 - d. 3 days
 - e. 4 to 5 days
 - f. 6 to 7 days
 - g. 8 to 13 days
 - h. 14 or more days

7. During the past 30 days, on how many days was your mental health not good? (Mental health includes stress, depression, and problems with emotions.)
- a. 0 days
 - b. 1 day
 - c. 2 days
 - d. 3 days
 - e. 4 to 5 days
 - f. 6 to 7 days
 - g. 8 to 13 days
 - h. 14 or more days

The next 5 questions ask about safety.

8. How often do you wear a seat belt when riding in a car driven by someone else?
- a. Never
 - b. Rarely
 - c. Sometimes
 - d. Most of the time
 - e. Always
9. During the past 30 days, how many times did you ride in a car or other vehicle driven by someone who had been drinking alcohol?
- a. 0 times
 - b. 1 time
 - c. 2 or 3 times
 - d. 4 or 5 times
 - e. 6 or more times
10. During the past 30 days, how many times did you drive a car or other vehicle when you had been drinking alcohol?
- a. I did not drive a car or other vehicle during the past 30 days
 - b. 0 times
 - c. 1 time
 - d. 2 or 3 times
 - e. 4 or 5 times
 - f. 6 or more times
11. During the past 30 days, how many times did you drive a car or other vehicle when you had been using marijuana (also called grass, pot, or weed)?
- a. I did not drive a car or other vehicle during the past 30 days
 - b. 0 times
 - c. 1 time
 - d. 2 or 3 times
 - e. 4 or 5 times
 - f. 6 or more times
12. During the past 30 days, on how many days did you text or e-mail while driving a car or other vehicle?
- a. I did not drive a car or other vehicle during the past 30 days

- b. 0 days
- c. 1 or 2 days
- d. 3 to 5 days
- e. 6 to 9 days
- f. 10 to 19 days
- g. 20 to 29 days
- h. All 30 days

The next 11 questions ask about violence-related behaviors.

13. During the past 30 days, on how many days did you carry a weapon such as a gun, knife, or club?
- a. 0 days
 - b. 1 day
 - c. 2 or 3 days
 - d. 4 or 5 days
 - e. 6 or more days
14. During the past 30 days, on how many days did you carry a weapon such as a gun, knife, or club on school property?
- a. 0 days
 - b. 1 day
 - c. 2 or 3 days
 - d. 4 or 5 days
 - e. 6 or more days
15. During the past 12 months, on how many days did you carry a gun? (Do not count the days when you carried a gun only for hunting or for a sport, such as target shooting.)
- a. 0 days
 - b. 1 day
 - c. 2 or 3 days
 - d. 4 or 5 days
 - e. 6 or more days
16. During the past 30 days, on how many days did you not go to school because you felt you would be unsafe at school or on your way to or from school?
- a. 0 days
 - b. 1 day
 - c. 2 or 3 days
 - d. 4 or 5 days
 - e. 6 or more days
17. During the past 12 months, how many times has someone threatened or injured you with a weapon such as a gun, knife, or club on school property?
- a. 0 times
 - b. 1 time
 - c. 2 or 3 times
 - d. 4 or 5 times
 - e. 6 or 7 times

- f. 8 or 9 times
- g. 10 or 11 times
- h. 12 or more times

18. During the past 12 months, how many times were you in a physical fight?

- a. 0 times
- b. 1 time
- c. 2 or 3 times
- d. 4 or 5 times
- e. 6 or 7 times
- f. 8 or 9 times
- g. 10 or 11 times
- h. 12 or more times

19. During the past 12 months, how many times were you in a physical fight on school property?

- a. 0 times
- b. 1 time
- c. 2 or 3 times
- d. 4 or 5 times
- e. 6 or 7 times
- f. 8 or 9 times
- g. 10 or 11 times
- h. 12 or more times

20. Have you ever been physically forced to have sexual intercourse when you did not want to?

- a. Yes
- b. No

21. During the past 12 months, how many times did anyone force you to do sexual things that you did not want to do? (Count such things as kissing, touching, or being physically forced to have sexual intercourse.)

- a. 0 times
- b. 1 time
- c. 2 or 3 times
- d. 4 or 5 times
- e. 6 or more times

22. During the past 12 months, how many times did someone you were dating or going out with force you to do sexual things that you did not want to do? (Count such things as kissing, touching, or being physically forced to have sexual intercourse.)

- a. I did not date or go out with anyone during the past 12 months
- b. 0 times
- c. 1 time
- d. 2 or 3 times
- e. 4 or 5 times
- f. 6 or more times

23. During the past 12 months, how many times did someone you were dating or going out with physically hurt you on purpose? (Count such things as being hit, slammed into something, or injured with an object or weapon.)

- a. I did not date or go out with anyone during the past 12 months
- b. 0 times
- c. 1 time
- d. 2 or 3 times
- e. 4 or 5 times
- f. 6 or more times

The next 4 questions ask about bullying. Bullying is when 1 or more students tease, threaten, spread rumors about, hit, shove, or hurt another student over and over again. It is not bullying when 2 students of about the same strength or power argue or fight or tease each other in a friendly way.

24. During the past 12 months, have you ever been bullied on school property?
- a. Yes
 - b. No
25. During the past 12 months, have you ever been electronically bullied? (Count being bullied through texting, Instagram, Facebook, or other social media.)
- a. Yes
 - b. No
26. During the past 12 months, have you ever been the victim of teasing or name calling because someone thought you were gay, lesbian, or bisexual?
- a. Yes
 - b. No
27. During the past 12 months, have you ever been the victim of teasing or name calling because of your gender?
- a. Yes
 - b. No

The next question asks about hurting yourself on purpose.

28. During the past 12 months, how many times did you do something to purposely hurt yourself without wanting to die, such as cutting or burning yourself on purpose?
- a. 0 times
 - b. 1 time
 - c. 2 or 3 times
 - d. 4 or 5 times
 - e. 6 or more times

The next 7 questions ask about sad feelings and attempted suicide. Sometimes people feel so depressed about the future that they may consider attempting suicide, that is, taking some action to end their own life.

29. During the past 12 months, did you ever feel so sad or hopeless almost every day for two weeks or more in a row that you stopped doing some usual activities?
- a. Yes

- b. No
30. During the past 12 months, did you ever seriously consider attempting suicide?
- a. Yes
 - b. No
31. During the past 12 months, did you make a plan about how you would attempt suicide?
- a. Yes
 - b. No
32. During the past 12 months, how many times did you actually attempt suicide?
- a. 0 times
 - b. 1 time
 - c. 2 or 3 times
 - d. 4 or 5 times
 - e. 6 or more times
33. If you attempted suicide during the past 12 months, did any attempt result in an injury, poisoning, or overdose that had to be treated by a doctor or nurse?
- a. I did not attempt suicide during the past 12 months
 - b. Yes
 - c. No
34. When you feel sad, empty, hopeless, angry, or anxious, how often do you get the kind of help you need?
- a. I do not feel sad, empty, hopeless, angry, or anxious
 - b. Never
 - c. Rarely
 - d. Sometimes
 - e. Most of the time
 - f. Always
35. When you feel sad, empty, hopeless, angry, or anxious, with whom would you most likely talk about it?
- a. I do not feel sad, empty, hopeless, angry, or anxious
 - b. Parent or other adult family member
 - c. Teacher or other adult in this school
 - d. Other adult
 - e. Friend
 - f. Sibling
 - g. Not sure

The next 7 questions ask about cigarette smoking.

36. Have you ever tried cigarette smoking, even one or two puffs?
- a. Yes
 - b. No
 - c.
37. How old were you when you first tried cigarette smoking, even one or two puffs?
- a. I have never tried cigarette smoking, not even one or two puffs

- b. 8 years old or younger
- c. 9 or 10 years old
- d. 11 or 12 years old
- e. 13 or 14 years old
- f. 15 or 16 years old
- g. 17 years old or older

38. During the past 30 days, on how many days did you smoke cigarettes?

- a. 0 days
- b. 1 or 2 days
- c. 3 to 5 days
- d. 6 to 9 days
- e. 10 to 19 days
- f. 20 to 29 days
- g. All 30 days

39. During the past 30 days, on the days you smoked, how many cigarettes did you smoke per day?

- a. I did not smoke cigarettes during the past 30 days
- b. Less than 1 cigarette per day
- c. 1 cigarette per day
- d. 2 to 5 cigarettes per day
- e. 6 to 10 cigarettes per day
- f. 11 to 20 cigarettes per day
- g. More than 20 cigarettes per day

40. How much do you think people risk harming themselves (physically or in other ways) if they smoke one or more packs of cigarettes per day?

- a. No risk
- b. Slight risk
- c. Moderate risk
- d. Great risk

41. How wrong do your friends feel it would be for you to smoke tobacco?

- a. Very wrong
- b. Wrong
- c. A little bit wrong
- d. Not at all wrong

42. How wrong do your parents feel it would be for you to smoke cigarettes?

- a. Very wrong
- b. Wrong
- c. A little bit wrong
- d. Not at all wrong

The next 3 questions ask about electronic vapor products, such as blu, NJOY, Vuse, MarkTen, Logic, Vapin Plus, eGo, and Halo. Electronic vapor products include e-cigarettes, e-cigars, e-pipes, vape pipes, vaping pens, e-hookahs, and hookah pens.

43. Have you ever used an electronic vapor product?
- a. Yes
 - b. No
44. During the past 30 days, on how many days did you use an electronic vapor product?
- a. 0 days
 - b. 1 or 2 days
 - c. 3 to 5 days
 - d. 6 to 9 days
 - e. 10 to 19 days
 - f. 20 to 29 days
 - g. All 30 days
45. During the past 30 days, how did you usually get your own electronic vapor products? (Select only one response.)
- a. I did not use any electronic vapor products during the past 30 days
 - b. I bought them in a store such as a convenience store, supermarket, discount store, gas station, or vape store
 - c. I got them on the Internet
 - d. I gave someone else money to buy them for me
 - e. I borrowed them from someone else
 - f. A person 18 years old or older gave them to me
 - g. I took them from a store or another person
 - h. I got them some other way

The next 3 questions ask about other tobacco products.

46. During the past 30 days, on how many days did you use chewing tobacco, snuff, dip, snus, or dissolvable tobacco products, such as Redman, Levi Garrett, Beechnut, Skoal, Skoal Bandits, Copenhagen, Camel Snus, Marlboro Snus, General Snus, Ariva, Stonewall, or Camel Orbs? (Do not count any electronic vapor products.)
- a. 0 days
 - b. 1 or 2 days
 - c. 3 to 5 days
 - d. 6 to 9 days
 - e. 10 to 19 days
 - f. 20 to 29 days
 - g. All 30 days
47. During the past 30 days, on how many days did you smoke cigars, cigarillos, or little cigars?
- a. 0 days
 - b. 1 or 2 days
 - c. 3 to 5 days
 - d. 6 to 9 days
 - e. 10 to 19 days
 - f. 20 to 29 days
 - g. All 30 days

48. During the past 12 months, did you ever try to quit using all tobacco products, including cigarettes, cigars, smokeless tobacco, shisha or hookah tobacco, and electronic vapor products?
- I did not use any tobacco products during the past 12 months
 - Yes
 - No

The next 4 questions ask about drinking alcohol. This includes drinking beer, wine, wine coolers, and liquor such as rum, gin, vodka, or whiskey. For these questions, drinking alcohol does not include drinking a few sips of wine for religious purposes.

49. During your life, on how many days have you had at least one drink of alcohol?
- 0 days
 - 1 or 2 days
 - 3 to 9 days
 - 10 to 19 days
 - 20 to 39 days
 - 40 to 99 days
 - 100 or more days
50. How old were you when you had your first drink of alcohol other than a few sips?
- I have never had a drink of alcohol other than a few sips
 - 8 years old or younger
 - 9 or 10 years old
 - 11 or 12 years old
 - 13 or 14 years old
 - 15 or 16 years old
 - 17 years old or older
51. During the past 30 days, on how many days did you have at least one drink of alcohol?
- 0 days
 - 1 or 2 days
 - 3 to 5 days
 - 6 to 9 days
 - 10 to 19 days
 - 20 to 29 days
 - All 30 days
52. During the past 30 days, how did you usually get the alcohol you drank?
- I did not drink alcohol during the past 30 days
 - I bought it in a store such as a liquor store, convenience store, supermarket, discount store, or gas station
 - I bought it at a restaurant, bar, or club
 - I bought it at a public event such as a concert or sporting event
 - I gave someone else money to buy it for me
 - Someone gave it to me
 - I took it from a store or family member
 - I got it some other way

The next 2 questions ask about how many drinks of alcohol you have had in a row, that is, within a couple of hours. For the first question, the number of drinks you need to think about is different for female students and male students.

53. During the past 30 days, on how many days did you have 4 or more drinks of alcohol in a row (if you are female) or 5 or more drinks of alcohol in a row (if you are male)?
- a. 0 days
 - b. 1 day
 - c. 2 days
 - d. 3 to 5 days
 - e. 6 to 9 days
 - f. 10 to 19 days
 - g. 20 or more days
54. During the past 30 days, what is the largest number of alcoholic drinks you had in a row?
- a. I did not drink alcohol during the past 30 days
 - b. 1 or 2 drinks
 - c. 3 drinks
 - d. 4 drinks
 - e. 5 drinks
 - f. 6 or 7 drinks
 - g. 8 or 9 drinks
 - h. 10 or more drinks

The next 3 questions ask more about drinking alcohol.

55. How wrong do your friends feel it would be for you to have one or two drinks of an alcoholic beverage nearly every day?
- a. Very wrong
 - b. Wrong
 - c. A little bit wrong
 - d. Not at all wrong
56. How much do you think people risk harming themselves (physically or in other ways) when they have five or more drinks of an alcoholic beverage once or twice a week?
- a. No risk
 - b. Slight risk
 - c. Moderate risk
 - d. Great risk
57. How wrong do your parents feel it would be for you to have one or two drinks of an alcoholic beverage nearly every day?
- a. Very wrong
 - b. Wrong
 - c. A little bit wrong
 - d. Not at all wrong

The next 6 questions ask about marijuana use. Marijuana also is called grass, pot, or weed.

58. During your life, how many times have you used marijuana?

- a. 0 times
- b. 1 or 2 times
- c. 3 to 9 times
- d. 10 to 19 times
- e. 20 to 39 times
- f. 40 to 99 times
- g. 100 or more times

59. How old were you when you tried marijuana for the first time?

- a. I have never tried marijuana
- b. 8 years old or younger
- c. 9 or 10 years old
- d. 11 or 12 years old
- e. 13 or 14 years old
- f. 15 or 16 years old
- g. 17 years old or older

60. During the past 30 days, how many times did you use marijuana?

- a. 0 times
- b. 1 or 2 times
- c. 3 to 9 times
- d. 10 to 19 times
- e. 20 to 39 times
- f. 40 or more times

61. How wrong do your friends feel it would be for you to smoke marijuana?

- a. Very wrong
- b. Wrong
- c. A little bit wrong
- d. Not at all wrong

62. How much do you think people risk harming themselves (physically or in other ways) if they smoke marijuana once or twice a week?

- a. No risk
- b. Slight risk
- c. Moderate risk
- d. Great risk

63. How wrong do your parents feel it would be for you to smoke marijuana?

- a. Very wrong
- b. Wrong
- c. A little bit wrong
- d. Not at all wrong

The next 14 questions ask about other drugs.

64. During your life, how many times have you used any form of cocaine, including powder, crack, or freebase?
- 0 times
 - 1 or 2 times
 - 3 to 9 times
 - 10 to 19 times
 - 20 to 39 times
 - 40 or more times
65. During your life, how many times have you sniffed glue, breathed the contents of aerosol spray cans, or inhaled any paints or sprays to get high?
- 0 times
 - 1 or 2 times
 - 3 to 9 times
 - 10 to 19 times
 - 20 to 39 times
 - 40 or more times
66. During your life, how many times have you used heroin (also called smack, junk, or China White)?
- 0 times
 - 1 or 2 times
 - 3 to 9 times
 - 10 to 19 times
 - 20 to 39 times
 - 40 or more times
67. During your life, how many times have you used methamphetamines (also called speed, crystal, crank, or ice)?
- 0 times
 - 1 or 2 times
 - 3 to 9 times
 - 10 to 19 times
 - 20 to 39 times
 - 40 or more times
68. During your life, how many times have you used ecstasy (also called MDMA)?
- 0 times
 - 1 or 2 times
 - 3 to 9 times
 - 10 to 19 times
 - 20 to 39 times
 - 40 or more times
69. During your life, how many times have you used synthetic marijuana (also called K2, Spice, fake weed, King Kong, Yucatan Fire, Skunk, or Moon Rocks)?
- 0 times
 - 1 or 2 times
 - 3 to 9 times

- d. 10 to 19 times
- e. 20 to 39 times
- f. 40 or more times

70. During your life, how many times have you taken steroid pills or shots without a doctor's prescription?

- a. 0 times
- b. 1 or 2 times
- c. 3 to 9 times
- d. 10 to 19 times
- e. 20 to 39 times
- f. 40 or more times

71. During your life, how many times have you taken prescription pain medicine without a doctor's prescription or differently than how a doctor told you to use it? (Count drugs such as codeine, Vicodin, OxyContin, Hydrocodone, and Percocet.)

- a. 0 times
- b. 1 or 2 times
- c. 3 to 9 times
- d. 10 to 19 times
- e. 20 to 39 times
- f. 40 or more times

72. During the past 30 days, how many times did you take a prescription drug (such as OxyContin, Percocet, Vicodin, codeine, Adderall, Ritalin, or Xanax) without a doctor's prescription?

- a. 0 times
- b. 1 or 2 times
- c. 3 to 9 times
- d. 10 to 19 times
- e. 20 to 39 times
- f. 40 or more times

73. How wrong do your friends feel it would be for you to use prescription drugs not prescribed to you?

- a. Very wrong
- b. Wrong
- c. A little bit wrong
- d. Not at all wrong

74. How much do you think people risk harming themselves (physically or in other ways) if they use prescription drugs that are not prescribed to them?

- a. No risk
- b. Slight risk
- c. Moderate risk
- d. Great risk

75. How wrong do your parents feel it would be for you use prescription drugs not prescribed to you?

- a. Very wrong
- b. Wrong
- c. A little bit wrong
- d. Not at all wrong

76. During your life, how many times have you used a needle to inject any illegal drug into your body?
- a. 0 times
 - b. 1 time
 - c. 2 or more times
77. During the past 12 months, has anyone offered, sold, or given you an illegal drug on school property?
- a. Yes
 - b. No

The next 9 questions ask about sexual behavior.

78. Have you ever had sexual intercourse?
- a. Yes
 - b. No
79. How old were you when you had sexual intercourse for the first time?
- a. I have never had sexual intercourse
 - b. 11 years old or younger
 - c. 12 years old
 - d. 13 years old
 - e. 14 years old
 - f. 15 years old
 - g. 16 years old
 - h. 17 years old or older
80. During your life, with how many people have you had sexual intercourse?
- a. I have never had sexual intercourse
 - b. 1 person
 - c. 2 people
 - d. 3 people
 - e. 4 people
 - f. 5 people
 - g. 6 or more people
81. During the past 3 months, with how many people did you have sexual intercourse?
- a. I have never had sexual intercourse
 - b. I have had sexual intercourse, but not during the past 3 months
 - c. 1 person
 - d. 2 people
 - e. 3 people
 - f. 4 people
 - g. 5 people
 - h. 6 or more people
82. Did you drink alcohol or use drugs before you had sexual intercourse the last time?
- a. I have never had sexual intercourse
 - b. Yes
 - c. No

83. The last time you had sexual intercourse, did you or your partner use a condom?
- I have never had sexual intercourse
 - Yes
 - No
84. The last time you had sexual intercourse, what one method did you or your partner use to prevent pregnancy? (Select only one response.)
- I have never had sexual intercourse
 - No method was used to prevent pregnancy
 - Birth control pills
 - Condoms
 - An IUD (such as Mirena or ParaGard) or implant (such as Implanon or Nexplanon)
 - A shot (such as Depo-Provera), patch (such as Ortho Evra), or birth control ring (such as NuvaRing)
 - Withdrawal or some other method
 - Not sure
85. During your life, with whom have you had sexual contact?
- I have never had sexual contact
 - Females
 - Males
 - Females and males
86. Which of the following best describes you?
- Heterosexual (straight)
 - Gay or lesbian
 - Bisexual
 - Not sure

The next 2 questions ask about body weight.

87. How do you describe your weight?
- Very underweight
 - Slightly underweight
 - About the right weight
 - Slightly overweight
 - Very overweight
88. Which of the following are you trying to do about your weight?
- Lose weight
 - Gain weight
 - Stay the same weight
 - I am not trying to do anything about my weight

The next 12 questions ask about food you ate or drank during the past 7 days. Think about all the meals and snacks you had from the time you got up until you went to bed. Be sure to include food you ate at home, at school, at restaurants, or anywhere else.

89. During the past 7 days, how many times did you drink 100% fruit juices such as orange juice, apple juice, or grape juice? (Do not count punch, Kool-Aid, sports drinks, or other fruit-flavored drinks.)
- I did not drink 100% fruit juice during the past 7 days
 - 1 to 3 times during the past 7 days
 - 4 to 6 times during the past 7 days
 - 1 time per day
 - 2 times per day
 - 3 times per day
 - 4 or more times per day
90. During the past 7 days, how many times did you eat fruit? (Do not count fruit juice.)
- I did not eat fruit during the past 7 days
 - 1 to 3 times during the past 7 days
 - 4 to 6 times during the past 7 days
 - 1 time per day
 - 2 times per day
 - 3 times per day
 - 4 or more times per day
91. During the past 7 days, how many times did you eat green salad?
- I did not eat green salad during the past 7 days
 - 1 to 3 times during the past 7 days
 - 4 to 6 times during the past 7 days
 - 1 time per day
 - 2 times per day
 - 3 times per day
 - 4 or more times per day
92. During the past 7 days, how many times did you eat potatoes? (Do not count french fries, fried potatoes, or potato chips.)
- I did not eat potatoes during the past 7 days
 - 1 to 3 times during the past 7 days
 - 4 to 6 times during the past 7 days
 - 1 time per day
 - 2 times per day
 - 3 times per day
 - 4 or more times per day
93. During the past 7 days, how many times did you eat carrots?
- I did not eat carrots during the past 7 days
 - 1 to 3 times during the past 7 days
 - 4 to 6 times during the past 7 days
 - 1 time per day
 - 2 times per day
 - 3 times per day
 - 4 or more times per day

94. During the past 7 days, how many times did you eat other vegetables? (Do not count green salad, potatoes, or carrots.)
- I did not eat other vegetables during the past 7 days
 - 1 to 3 times during the past 7 days
 - 4 to 6 times during the past 7 days
 - 1 time per day
 - 2 times per day
 - 3 times per day
 - 4 or more times per day
95. During the past 7 days, how many times did you drink a can, bottle, or glass of soda or pop, such as Coke, Pepsi, or Sprite? (Do not count diet soda or diet pop.)
- I did not drink soda or pop during the past 7 days
 - 1 to 3 times during the past 7 days
 - 4 to 6 times during the past 7 days
 - 1 time per day
 - 2 times per day
 - 3 times per day
 - 4 or more times per day
96. During the past 7 days, how many times did you drink a can, bottle, or glass of a sports drink such as Gatorade or Powerade? (Do not count low-calorie sports drinks such as Propel or G2.)
- I did not drink sports drinks during the past 7 days
 - 1 to 3 times during the past 7 days
 - 4 to 6 times during the past 7 days
 - 1 time per day
 - 2 times per day
 - 3 times per day
 - 4 or more times per day
97. During the past 7 days, how many times did you drink a bottle or glass of plain water? (Count tap, bottled, and unflavored sparkling water.)
- I did not drink water during the past 7 days
 - 1 to 3 times during the past 7 days
 - 4 to 6 times during the past 7 days
 - 1 time per day
 - 2 times per day
 - 3 times per day
 - 4 or more times per day
98. During the past 7 days, how many glasses of milk did you drink? (Count the milk you drank in a glass or cup, from a carton, or with cereal. Count the half pint of milk served at school as equal to one glass.)
- I did not drink milk during the past 7 days
 - 1 to 3 glasses during the past 7 days
 - 4 to 6 glasses during the past 7 days
 - 1 glass per day
 - 2 glasses per day
 - 3 glasses per day
 - 4 or more glasses per day

99. During the past 7 days, how many times did you have a drink that was high in caffeine, including coffee, espresso, or energy drinks (such as Red Bull, Monster, or Rockstar)? (Do not count soda, pop, or tea.)
- I did not drink a drink that was high in caffeine or an energy drink during the past 7 days
 - 1 to 3 times during the past 7 days
 - 4 to 6 times during the past 7 days
 - 1 time per day
 - 2 times per day
 - 3 times per day
 - 4 or more times per day
100. During the past 7 days, on how many days did you eat breakfast?
- 0 days
 - 1 day
 - 2 days
 - 3 days
 - 4 days
 - 5 days
 - 6 days
 - 7 days

The next 4 questions ask about physical activity.

101. During the past 7 days, on how many days were you physically active for a total of at least 60 minutes per day? (Add up all the time you spent in any kind of physical activity that increased your heart rate and made you breathe hard some of the time.)
- 0 days
 - 1 day
 - 2 days
 - 3 days
 - 4 days
 - 5 days
 - 6 days
 - 7 days
102. On an average school day, how many hours do you watch TV?
- I do not watch TV on an average school day
 - Less than 1 hour per day
 - 1 hour per day
 - 2 hours per day
 - 3 hours per day
 - 4 hours per day
 - 5 or more hours per day
103. On an average school day, how many hours do you play video or computer games or use a computer for something that is not school work? (Count time spent on things such as Xbox, PlayStation, an iPad or other tablet, a smartphone, texting, YouTube, Instagram, Facebook, or other social media.)
- I do not play video or computer games or use a computer for something that is not school work

- b. Less than 1 hour per day
- c. 1 hour per day
- d. 2 hours per day
- e. 3 hours per day
- f. 4 hours per day
- g. 5 or more hours per day

104. During the past 12 months, on how many sports teams did you play? (Count any teams run by your school or community groups.)
- a. 0 teams
 - b. 1 team
 - c. 2 teams
 - d. 3 or more teams

The next question asks about concussions. A concussion is when a blow or jolt to the head causes problems such as headaches, dizziness, being dazed or confused, difficulty remembering or concentrating, vomiting, blurred vision, or being knocked out.

105. During the past 12 months, how many times did you have a concussion from playing a sport or being physically active?
- a. 0 times
 - b. 1 time
 - c. 2 times
 - d. 3 times
 - e. 4 or more times

The next 4 questions ask about other health-related topics

106. When was the last time you saw a dentist for a check-up, exam, teeth cleaning, or other dental work?
- a. During the past 12 months
 - b. Between 12 and 24 months ago
 - c. More than 24 months ago
 - d. Never
 - e. Not sure
107. Has a doctor or nurse ever told you that you have asthma?
- a. Yes
 - b. No
 - c. Not sure
108. On an average school night, how many hours of sleep do you get?
- a. 4 or less hours
 - b. 5 hours
 - c. 6 hours
 - d. 7 hours
 - e. 8 hours
 - f. 9 hours
 - g. 10 or more hours

109. During the past 12 months, how would you describe your grades in school?
- a. Mostly A's
 - b. Mostly B's
 - c. Mostly C's
 - d. Mostly D's
 - e. Mostly F's
 - f. None of these grades
 - g. Not sure

Problems are considered significant when you have them for two or more weeks, they keep coming back, they keep you from doing what you are supposed to do, or they make you feel like you cannot go on. The next question asks about significant problems.

110. During the past 12 months have you had significant problems with feeling very anxious, nervous, tense, cared, or like something bad was going to happen?
- a. Yes
 - b. No

YRBS Questionnaire Comparisons

Key: WWC = Well Washington County (Only those questions with a green X are in the WWC survey)
 Q = CDC National YRBS questionnaire number
 C = CESA 6 YRBS questionnaire number
 W = Wisconsin YRBS questionnaire number

Topic	#	Question	WWC	YRBS	CDC	National	WI	CESA 6
			X		X		X	
Intro	Q1	How old are you	X		X		X	X
	Q2	What is your sex	X		X		X	X
	Q3	In what grade are you	X		X		X	X
	Q4	Are you Hispanic or Latino	X		X		X	X
	Q5	What is your race	X		X		X	X
	Q6	How tall are you without your shoes on			X		X	X
	Q7	How much do you weigh without your shoes on			X		X	
	C8	During the past 30 days, on how many days was your physical health not good	X					X
	C9	During the past 30 days, on how many days was your mental health not good	X					X
	Q8	How often do you wear a seat belt when riding in a car driven by someone else	X		X		X	X
Safety	Q9	During the past 30 days, how many times did you ride in a car or other vehicle driven by someone who had been drinking alcohol	X		X		X	X
	Q10	During the past 30 days, how many times did you drive a car or other vehicle when you had been drinking alcohol	X		X		X	X
	Q11	During the past 30 days, how many times did you drive a car or other vehicle when you had been using marijuana	X		X			
	Q12	During the past 30 days, on how many days did you text or e-mail while driving a car or other vehicle	X		X		X	X
	Q13	During the past 30 days, on how many days did you carry a weapon such as a gun, knife, or club	X		X			X
	Q14	During the past 30 days, on how many days did you carry a weapon such as a gun, knife, or club on school property	X		X		X	X
	Q15	During the past 12 months, on how many days did you carry a gun? (Do not count the days when you carried a gun only for hunting or for a sport, such as target shooting.)	X		X		X	
	Q16	During the past 30 days, on how many days did you not go to school because you felt you would be unsafe at school or on your way to or from school	X		X		X	X
	Q17	During the past 12 months, how many times has someone threatened or injured you with a weapon such as a gun, knife, or club on school property	X		X		X	X
	Q18	During the past 12 months, how many times were you in a physical fight	X		X		X	X
Violence-related	Q19	During the past 12 months, how many times were you in a physical fight on school property	X		X		X	X
	Q20	Have you ever been physically forced to have sexual intercourse when you did not want to	X		X		X	X
	Q21	During the past 12 months, how many times did anyone force you to do sexual things that you did not want to do? (Count such things as kissing, touching, or being physically forced to have sexual intercourse.)	X		X		X	Wording different

YRBS Questionnaire Comparisons

behaviors	Q22	During the past 12 months, how many times did someone you were dating or going out with force you to do sexual things that you did not want to do? (Count such things as kissing, touching, or being physically forced to have sexual intercourse.)	X	X	X	X
	Q23	During the past 12 months, how many times did someone you were dating or going out with physically hurt you on purpose? (Count such things as being hit, slammed into something, or injured with an object or weapon.)	X	X	X	X
	W18	During the past 12 months, how many times has someone tried to hurt you by hitting, punching, or kicking you while on school property			X	X
	W19	When you are at school, how often do you feel safe from physical harm			X	X
	W20	Do you agree or disagree that violence is a problem at your school			X	X
	C24	During the past 12 months, did your boyfriend or girlfriend ever hit, slap, or physically hurt you on purpose? (Such things as being hit, slammed into something, or injured with an object or weapon.)				X
	C26	Have you ever been forced, either verbally or physically, to take part in a sexual activity? (Such things as kissing, touching, or being forced to have sexual intercourse.)				X
	Q24	During the past 12 months, have you ever been bullied on school property	X	X	X	X
	Q25	During the past 12 months, have you ever been electronically bullied? (Count being bullied through texting, Instagram, Facebook, or other social media.)	X	X	X	X
	W26	During the past 12 months, have you ever been the victim of teasing or name calling because someone thought you were gay, lesbian, or bisexual	X		X	
Bullying	W27	During the past 12 months, have you ever been the victim of teasing or name calling because of your gender	X		X	X
	W28	Do you agree or disagree that harassment and bullying by other students is a problem at your school			X	X
Hurting self	W29	During the past 12 months, how many times did you do something to purposely hurt yourself without wanting to die, such as cutting or burning yourself on purpose	X		X	X
	Q26	During the past 12 months, did you ever feel so sad or hopeless almost every day for two weeks or more in a row that you stopped doing some usual activities	X	X	X	X
Suicide	Q27	During the past 12 months, did you ever seriously consider attempting suicide	X	X	X	X
	Q28	During the past 12 months, did you make a plan about how you would attempt suicide	X	X	X	X
	Q29	During the past 12 months, how many times did you actually attempt suicide	X	X	X	X
	Q30	If you attempted suicide during the past 12 months, did any attempt result in an injury, poisoning, or overdose that had to be treated by a doctor or nurse	X	X	X	X
	W30	When you feel sad, empty, hopeless, angry, or anxious, how often do you get the kind of help you need	X		X	X
W31	When you feel sad, empty, hopeless, angry, or anxious, with whom would you most likely talk about it	X		X	X	

YRBS Questionnaire Comparisons

	Q31	Have you ever tried cigarette smoking, even one or two puffs	X	X	X	X	X
	Q32	How old were you when you first tried cigarette smoking, even one or two puffs	X	X	X	X	X
	Q33	During the past 30 days, on how many days did you smoke cigarettes	X	X	X	X	X
	Q34	During the past 30 days, on the days you smoked, how many cigarettes did you smoke per day	X	X	X	X	X
Cigarette smoking	C44	During the past 30 days, on how many days did you smoke cigarettes on school property					X
	C45	Have you ever smoked cigarettes daily, that is, at least one cigarette every day for 30 days					X
	C47	How much do you think people risk harming themselves (physically or in other ways) if they smoke one or more packs of cigarettes per day	X				X
	C48	How wrong do your friends feel it would be for you to smoke tobacco	X				X
	C49	How wrong do your parents feel it would be for you to smoke cigarettes	X				X
Electronic vapor products	Q35	Have you ever used an electronic vapor product	X	X	X	X	X
	Q36	During the past 30 days, on how many days did you use an electronic vapor product	X	X	X	X	X
	Q37	During the past 30 days, how did you usually get your own electronic vapor products? (Select only one response.)	X	X	X	X	X
Tobacco products	Q38	During the past 30 days, on how many days did you use chewing tobacco, snuff, dip, snus, or dissolvable tobacco products, such as Redman, Levi Garrett, Beechnut, Skoal, Skoal Bandits, Copenhagen, Camel Snus, Marlboro Snus, General Snus, Ariva, Stonewall, or Camel Orbs? (Do not count any electronic vapor products.)	X	X	X	X	X
	Q39	During the past 30 days, on how many days did you smoke cigars, cigarillos, or little cigars	X	X	X	X	X
	Q40	During the past 12 months, did you ever try to quit using all tobacco products, including cigarettes, cigars, smokeless tobacco, shisha or hookah tobacco, and electronic vapor products	X	X	X	X	X
	Q41	During your life, on how many days have you had at least one drink of alcohol	X	X	X	X	X
	Q42	How old were you when you had your first drink of alcohol other than a few sips	X	X	X	X	X
	Q43	During the past 30 days, on how many days did you have at least one drink of alcohol	X	X	X	X	X
	Q44	During the past 30 days, how did you usually get the alcohol you drank	X	X	X	X	X
	Q45	During the past 30 days, on how many days did you have 4 or more drinks of alcohol in a row (if you are female) or 5 or more drinks of alcohol in a row (if you are male)	X	X	X	X	Wording differs
	W48	During the past 30 days, on how many days did you have 5 or more drinks of alcohol in a row, that is, within a couple of hours					Wording differs
Alcohol	Q46	During the past 30 days, what is the largest number of alcoholic drinks you had in a row	X	X	X	X	X
	C57	How much do you approve or disapprove of people having 5 or more drinks of alcohol in a row, that is, within a couple of hours once or twice each weekend					X
	C58	How wrong do your friends feel it would be for you to have one or two drinks of an alcoholic beverage nearly every day	X				X
	C59	How much do you think people risk harming themselves (physically or in other ways) when they have five or more drinks of an alcoholic beverage once or twice a week	X				X
	C60	How wrong do your parents feel it would be for you to have one or two drinks of an alcoholic beverage nearly every day	X				X

YRBS Questionnaire Comparisons

Marijuana	Q47	During your life, how many times have you used marijuana	X	X	X	X
	Q48	How old were you when you tried marijuana for the first time	X	X	X	X
	Q49	During the past 30 days, how many times did you use marijuana	X	X	X	X
	C64	How much do you approve or disapprove of people smoking marijuana	X			X
	C65	How wrong do your friends feel it would be for you to smoke marijuana	X			X
	C66	How much do you think people risk harming themselves (physically or in other ways) if they smoke marijuana once or twice a week	X			X
	C67	How wrong do your parents feel it would be for you to smoke marijuana	X			X
Other drugs	Q50	During your life, how many times have you used any form of cocaine, including powder, crack, or freebase	X	X	X	X
	C75	During the past 30 days, how many times did you use any form of cocaine, including powder, crack, or freebase				X
	Q51	During your life, how many times have you sniffed glue, breathed the contents of aerosol spray cans, or inhaled any paints or sprays to get high	X	X	X	X
	Q52	During your life, how many times have you used heroin (also called smack, junk, or China White)	X	X		X
	Q53	During your life, how many times have you used methamphetamines (also called speed, crystal, crank, or ice)	X	X		X
	Q54	During your life, how many times have you used ecstasy (also called MDMA)	X	X		X
	Q55	During your life, how many times have you used hallucinogenic drugs, such as LSD, acid, PCP, angel dust, mescaline, or mushrooms		X		
	Q56	During your life, how many times have you used synthetic marijuana (also called K2, Spice, fake weed, King Kong, Yucatan Fire, Skunk, or Moon Rocks)	X	X		X
	Q57	During your life, how many times have you taken steroid pills or shots without a doctor's prescription	X	X		
	Q58	During your life, how many times have you taken prescription pain medicine without a doctor's prescription or differently than how a doctor told you to use it?(Count drugs such as codeine, Vicodin, OxyContin, Hydrocodone, and Percocet.)	X	X	X	X
	C69	During the past 30 days, how many times did you take a prescription drug (such as OxyContin, Percocet, Vicodin, codeine, Adderall, Ritalin, or Xanax) without a doctor's prescription	X			X
	C70	How wrong do your friends feel it would be for you to use prescription drugs not prescribed to you	X			X
	C71	How much do you think people risk harming themselves (physically or in other ways) if they use prescription drugs that are not prescribed to them	X			X
C72	How wrong do your parents feel it would be for you use prescription drugs not prescribed to you	X			X	
Q59	During your life, how many times have you used a needle to inject any illegal drug into your body	X	X			
Q60	During the past 12 months, has anyone offered, sold, or given you an illegal drug on school property	X	X	X	X	
W56	During your life, how many times have you taken an over-the-counter drug to get high				X	
W57	During the past 12 months, how many times did you attend school under the influence of alcohol or other illegal drugs, such as marijuana or cocaine			X	X	

YRBS Questionnaire Comparisons

	W 59	It is important to me to delay having sexual intercourse until ... (Select only one response.)				
	Q61	Have you ever had sexual intercourse	X	X	X	X
	Q62	How old were you when you had sexual intercourse for the first time	X	X	X	X
	Q63	During your life, with how many people have you had sexual intercourse	X	X	X	X
	Q64	During the past 3 months, with how many people did you have sexual intercourse	X	X	X	X
	Q65	Did you drink alcohol or use drugs before you had sexual intercourse the last time	X	X	X	X
	Q66	The last time you had sexual intercourse, did you or your partner use a condom	X	X	X	X
	Q67	The last time you had sexual intercourse, what one method did you or your partner use to prevent pregnancy? (Select only one response.)	X	X	X	X
	Q68	During your life, with whom have you had sexual contact: males, females, etc.	X	X	X	X
	W68	The last time you had sexual contact, how many years younger or older than you was your partner				
	Q69	Which of the following best describes you: heterosexual, gay or lesbian, etc.	X	X	X	X
	Q70	How do you describe your weight	X	X		
	Q71	Which of the following are you trying to do about your weight	X	X	X	X
	Q72	During the past 7 days, how many times did you drink 100% fruit juices such as orange juice, apple juice, or grape juice? (Do not count punch, Kool-Aid, sports drinks, or other fruit-flavored drinks)	X	X	X	X
	Q73	During the past 7 days, how many times did you eat fruit? (Do not count fruit juice.)	X	X	X	X
	Q74	During the past 7 days, how many times did you eat green salad	X	X	X	X
	Q75	During the past 7 days, how many times did you eat potatoes? (Do not count french fries, fried potatoes, or potato chips.)	X	X	X	X
	Q76	During the past 7 days, how many times did you eat carrots	X	X	X	X
	Q77	During the past 7 days, how many times did you eat other vegetables? (Do not count green salad, potatoes, or carrots.)	X	X	X	X
	C96	During the past 7 days, how many times did you eat vegetables? (Do not count potatoes.)				
	Q78	During the past 7 days, how many times did you drink a can, bottle, or glass of soda or pop, such as Coke, Pepsi, or Sprite? (Do not count diet soda or diet pop.)	X	X	X	X
	Q79	During the past 7 days, how many times did you drink a can, bottle, or glass of a sports drink such as Gatorade or Powerade? (Do not count low-calorie sports drinks such as Propel or G2.)	X	X	X	X
	Q80	During the past 7 days, how many times did you drink a bottle or glass of plain water? (Count tap, bottled, and unflavored sparkling water.)	X	X	X	X
	Q81	During the past 7 days, how many glasses of milk did you drink? (Count the milk you drank in a glass or cup, from a carton, or with cereal. Count the half pint of milk served at school as equal to one glass.)	X	X	X	X
	W78	During the past 7 days, how many times did you have a drink that was high in caffeine, including coffee, espresso, or energy drinks (such as Red Bull, Monster, or Rockstar)? (Do not count soda, pop, or tea.)	X	X	X	X
	W79	During the past 7 days, how many times did you drink a can, bottle, or glass of a sugar-sweetened beverage such as lemonade, sweetened tea or coffee drinks, flavored milk, Snapple, or Sunny Delight? (Do not count soda or pop, sports drinks, energy drinks, or 100% fruit juice.)				
	Q82	During the past 7 days, on how many days did you eat breakfast	X	X	X	X

YRBS Questionnaire Comparisons

Q83	Are there any foods that you have to avoid because eating the food could cause an allergic reaction, like skin rashes, swelling, itching, vomiting, coughing, or trouble breathing			X		
C100	During the past 30 days, how often did you go hungry because there was not enough food in your home					X
Q84	During the past 7 days, on how many days were you physically active for a total of at least 60 minutes per day? (Add up all the time you spent in any kind of physical activity that increased your heart rate and made you breathe hard some of the time)	X		X	X	X
Q85	During the past 7 days, on how many days did you do exercises to strengthen or tone your muscles, such as push-ups, sit-ups, or weight lifting			X		
Q86	On an average school day, how many hours do you watch TV	X		X	X	X
Q87	On an average school day, how many hours do you play video or computer games or use a computer for something that is not school work? (Count time spent on things such as Xbox, PlayStation, an iPad or other tablet, a smartphone, texting, YouTube, Instagram, Facebook, or other social media)	X		X	X	X
Q88	In an average week when you are in school, on how many days do you go to physical education (PE) classes			X	X	X
Q89	During the past 12 months, on how many sports teams did you play? (Count any teams run by your school or community groups.)	X		X		
Q90	During the past 12 months, how many times did you have a concussion from playing a sport or being physically active	X		X		
W85	Have you ever been taught about AIDS or HIV infection in school				X	X
Q91	Have you ever been tested for HIV, the virus that causes AIDS? (Do not count tests done if you donated blood.)			X	X	
C108	Have you ever talked about AIDS or HIV infection with your parents or other adults in your family					X
C109	Have you ever been told by a doctor or nurse that you have a sexually transmitted disease (STD)					X
Q92	During the past 12 months, how many times did you use an indoor tanning device such as a sunlamp, sunbed, or tanning booth? (Do not count getting a spray-on tan.)			X	X	
Q93	During the past 12 months, how many times have you had a sunburn? (Count the number of times even a small part of your skin turned red or hurt for 12 hours or more after being outside in the sun or after using a sunlamp or other indoor tanning device)			X		
W88	When you are outside for more than one hour on a sunny day, how often do you wear sunscreen with an SPF of 15 or higher					X
Q94	When was the last time you saw a dentist for a check-up, exam, teeth cleaning, or other dental work	X		X	X	X
Q95	Has a doctor or nurse ever told you that you have asthma	X		X	X	X
Q96	On an average school night, how many hours of sleep do you get	X		X	X	
Q97	During the past 12 months, how would you describe your grades in school	X		X	X	X
Q98	Because of a physical, mental, or emotional problem, do you have serious difficulty concentrating, remembering, or making decisions			X		
Q99	How well do you speak English			X		X
W93	Do you agree or disagree that you feel like you belong at your school				X	X
W94	Is there at least one teacher or other adult in your school that you can talk to if you have a problem				X	X



GERMANTOWN TRANE CONTROLS UPDATE

Buildings Committee Meeting
November 13, 2017

Trane Controls & Energy Services



Delivering VALUE that impacts your school district.

Tracer Controls

Open



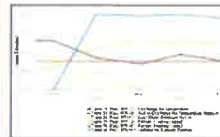
Easy



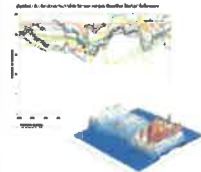
Expandable



Optimized



Intelligent





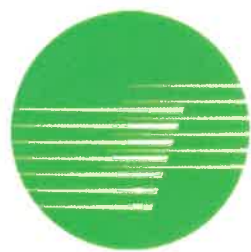
Benefits

- Aging Building Automation Infrastructure
 - Continuity of systems
- Analytics and Coaching for Optimization
 - Reduce operating expense
 - Build upon success of the energy project
- Enhance learning environment
 - Student and staff learning, training and coaching for operational excellence

Financing



- Tax Exempt Leasing Option



TRANE®

IR Ingersoll Rand.



Trane Controls Proposal



Controls Proposal For:

Richard Ericksen
Director of Business & Auxiliary Services
Germantown School District
N104 W13840 Donges Bay Road
Germantown, WI 53022 U.S.A.

Local Trane Office:

Trane U.S. Inc.
234 W Florida St.
6th Floor
Milwaukee, WI 53204

Local Trane Representative:

Ashley Henderson
Account Manager
Cell: (414) 208-9007

Proposal ID: 2375850

Date: November 07, 2017



Prepared For:
Richard Ericksen

Date:
November 07, 2017

Job Name:
GSD – Trane Controls Update

Proposal Number: 2375850

Delivery Terms:
Freight Allowed and Prepaid – F.O.B Factory

Payment Terms:
Net 30

Proposal Expiration Date:
30 Days

Scope of Work

“Scope of Work” is based on the following negotiated scope of work with Richard Ericksen based on converting the control system within Germantown School District to a Trane Control System.

Scope of Work

Trane Tracer Control System Upgrade:

- Development of District Control Standards
- Project Management & Coordination
- Project Engineering for Controls
 - Control Installation Drawings (Includes “As Built” drawings)
- Trane Tracer Ensemble Integration (existing)
 - Includes
 - System Commissioning
 - Point Naming & Alarm Set-Up
 - Graphics (Based on developed Standard)
 - School Dashboard Programming
 - District Dashboard Programming
 - Trane Tracer Ensemble System Training (4 hours)
- (1) Year Parts & Labor Warranty on Supplied Components
- Trane Tracer SC Main System Controllers
 - Includes:
 - Installation & Wiring
 - Set-Up & Licensing
- Trane AirFi™ Wireless Communication Link
 - Includes:
 - Installation of Trane Wireless Coordinators to integrate with the Trane AirFi™ Wireless network installed as part of the Referendum



High School:

- BP#1
 - Includes: Furnish, install & wire Trane UC Controllers w/End Devices for control/monitoring
 - Programming & Commissioning
- Air Handling Units
 - Includes:
 - Furnish, install & wire Trane UC Controllers w/End Devices for control/monitoring
 - Furnish, install & wire Trane AirFi™ Wireless Transmitters on the units
 - Furnish & install zones sensors where specified
 - Programming & Commissioning
- Chiller Plants
 - Includes:
 - Labor to integrate to End Devices for control/monitoring (Trane UC Controller installed with Referendum)
 - Programming & Commissioning
- Hot Water Plants
 - Includes:
 - Labor to integrate to End Devices for control/monitoring (Trane UC Controller installed with Referendum)
 - Programming & Commissioning
- VAV Boxes (w & w/o Fin Tube Radiation)
 - Includes:
 - Furnish, install & wire Trane UC Controllers (replace pneumatic boxes where needed)
 - Furnish & install Wireless Zone Temperature Sensors and Occupancy Sensors
 - Programming & Commissioning
- Booster Coil Units
 - Includes:
 - Furnish, install & wire Trane UC Controllers w/End Devices for control/monitoring
 - Furnish, install & wire Trane AirFi™ Wireless Transmitters on the unit
 - Programming & Commissioning
- Power Meter Integration
 - Integrate existing Setra Power Meters
 - Commissioning

Kennedy Middle School:

- Air Handling Units
 - Includes:
 - Furnish, install & wire Trane UC Controllers w/End Devices for control/monitoring of the Air Handling Units
 - Furnish, install & wire Trane AirFi™ Wireless Transmitters on the units
 - Furnish & install zones sensors where specified
 - Programming & Commissioning
- Chiller Plants
 - Includes:
 - Labor to integrate to End Devices for control/monitoring (Trane UC Controller installed with Referendum)
 - Programming & Commissioning
- Hot Water Plants
 - Includes:
 - Labor to integrate to End Devices for control/monitoring (Trane UC Controller installed with Referendum)
 - Programming & Commissioning
- VAV Boxes (w & w/o Fin Tube Radiation)



- Includes:
 - Furnish, install & wire Trane UC Controllers (replace pneumatic boxes where needed)
 - Furnish & install Wireless Zone Temperature Sensors and Occupancy Sensors
 - Programming & Commissioning
- Booster Coil Units
 - Includes:
 - Furnish, install & wire Trane UC Controllers w/End Devices for control/monitoring
 - Furnish, install & wire Trane AirFi™ Wireless Transmitters on the unit
 - Programming & Commissioning
- Lighting Integration
 - Includes:
 - Furnish, install & wire relays to integrate for control/monitoring
 - Commissioning
- Power Meter Integration
 - Integrate existing Setra Power Meters
 - Commissioning

Clarifications & Exclusions:

General:

- Any service not listed is not included.
- Work will be performed during normal Trane business hours.
- The above pricing does not include any equipment not included above in this proposal.
- The above pricing does not include labor to assist the air and water balancer. Any additional time required will be billed at our current T&M rate of \$169.00/hr.
- The above pricing does not include balancing of air or hydronic systems.

Trane Control System:

- The above pricing assumes factory mounted Trane controls on the equipment listed in the Trane Tracer Control System "Scope of Work". Please contact your Trane representative for controls pricing on alternate equipment.
- The above pricing does not include connecting of the Trane Tracer Control System components to the customer's local area network (LAN). All data ports, switches, routers and cabling to be provided by others.
- Any exposed wiring would be installed in conduit. Any wiring above the plenum would be plenum rated and ran in existing raceways or properly supported.
- The above pricing does not include 120V power supplies for the temperature control panels (By electrical contractor).
- The above pricing does not include integration of any equipment not specified above.
- The above pricing does not include labor to assist Commissioning Agent for verification of the systems. Trane would provide a separate quote/bill if this service is required.
- The above pricing does not include Control Dampers or Damper Actuators (unless noted).
- The above pricing does not include Fire/Life Safety equipment, controls or integration.
- The above pricing does not include Fire Dampers, Fire/Smoke Dampers, Smoke Detectors or integration/monitoring the Smoke Detectors.
- The above pricing does not include installation of control dampers, control valve assemblies, VFD's, flow meters and sensor wells in piping unless noted.
- The above pricing includes a (1) year parts and labor warranty on supplied components upon substantial completion which includes labor for modifications to the controls system for defects in workmanship only. Any customer requests for modifications to the controls system that are not considered a defect in workmanship would be billed separately at Trane current T&M service rates.
- The above pricing does not include providing any software.



Pricing and Acceptance

Richard Ericksen
Director of Business & Auxiliary Services
Germantown School District
N104 W13840 Donges Bay Road
Germantown, WI 53022 U.S.A.

Price

Total Net Price (excluding interest and fees).....\$ 804,300
*Tax Exempt Lease Purchase Option 10 Year Financing Term at 2.85%

Respectfully submitted,

A handwritten signature in black ink, appearing to read "Ashley Henderson".

Ashley Henderson
Account Manager
Trane U.S. Inc.



ACCEPTANCE

This proposal is subject to Customer's acceptance of the attached Trane Terms and Conditions (Installation).

We value the confidence you have placed in Trane and look forward to working with you.

Submitted By: Ashley Henderson	Cell: (414) 208-9007 Office: (414) 944-4025 Proposal Date: November 07, 2017
CUSTOMER ACCEPTANCE Germantown School District	TRANE ACCEPTANCE Trane U.S. Inc.
Authorized Representative	Authorized Representative 
Printed Name	Printed Name Ashley Henderson
Title	Title Account Manager
Purchase Order	Signature Date
Acceptance Date:	November 7, 2017



TERMS AND CONDITIONS – COMMERCIAL INSTALLATION

“Company” shall mean Trane U.S. Inc..

1. **Acceptance; Agreement.** These terms and conditions are an integral part of Company’s offer and form the basis of any agreement (the “Agreement”) resulting from Company’s proposal (the “Proposal”) for the commercial goods and/or services described (the “Work”). COMPANY’S TERMS AND CONDITIONS ARE SUBJECT TO PERIODIC CHANGE OR AMENDMENT. The Proposal is subject to acceptance in writing by the party to whom this offer is made or an authorized agent (“Customer”) delivered to Company within 30 days from the date of the Proposal. If Customer accepts the Proposal by placing an order, without the addition of any other terms and conditions of sale or any other modification, Customer’s order shall be deemed acceptance of the Proposal subject to Company’s terms and conditions. If Customer’s order is expressly conditioned upon Company’s acceptance or assent to terms and/or conditions other than those expressed herein, return of such order by Company with Company’s terms and conditions attached or referenced serves as Company’s notice of objection to Customer’s terms and as Company’s counter-offer to provide Work in accordance with the Proposal and the Company terms and conditions. If Customer does not reject or object in writing to Company within 10 days, Company’s counter-offer will be deemed accepted. Customer’s acceptance of the Work by Company will in any event constitute an acceptance by Customer of Company’s terms and conditions. This Agreement is subject to credit approval by Company. Upon disapproval of credit, Company may delay or suspend performance or, at its option, renegotiate prices and/or terms and conditions with Customer. If Company and Customer are unable to agree on such revisions, this Agreement shall be cancelled without any liability, other than Customer’s obligation to pay for Work rendered by Company to the date of cancellation.
2. **Pricing and Taxes.** Unless otherwise noted, the price in the Proposal includes standard ground transportation and, if required by law, all sales, consumer, use and similar taxes legally enacted as of the date hereof for equipment and material installed by Company. Tax exemption is contingent upon Customer furnishing appropriate certificates evidencing Customer’s tax exempt status. Company shall charge Customer additional costs for bonds agreed to be provided. Equipment sold on an uninstalled basis and any taxable labor/labour do not include sales tax and taxes will be added. Following acceptance without addition of any other terms and condition of sale or any other modification by Customer, the prices stated are firm provided that notification of release for immediate production and shipment is received at the factory not later than 3 months from order receipt. If such release is received later than 3 months from order receipt date, prices will be increased a straight 1% (not compounded) for each one-month period (or part thereof) beyond the 3 month firm price period up to the date of receipt of such release. If such release is not received within 6 months after date of order receipt, the prices are subject to renegotiation, or at Company’s option, the order will be cancelled. Any delay in shipment caused by Customer’s actions will subject prices to increase equal to the percentage increase in list prices during that period of delay and Company may charge Customer with incurred storage fees.
3. **Exclusions from Work.** Company’s obligation is limited to the Work as defined and does not include any modifications to the Work site under the Americans With Disabilities Act or any other law or building code(s). In no event shall Company be required to perform work Company reasonably believes is outside of the defined Work without a written change order signed by Customer and Company.
4. **Performance.** Company shall perform the Work in accordance with industry standards generally applicable in the area under similar circumstances as of the time Company performs the Work. Company may refuse to perform any Work where working conditions could endanger property or put at risk the safety of persons. Unless otherwise agreed to by Customer and Company, at Customer’s expense and before the Work begins, Customer will provide any necessary access platforms, catwalks to safely perform the Work in compliance with OSHA or state industrial safety regulations.
5. **Payment.** Customer shall pay Company’s invoices within net 30 days of invoice date. Company may invoice Customer for all equipment or material furnished, whether delivered to the installation site or to an off-site storage facility and for all Work performed on-site or off-site. No retention shall be withheld from any payments except as expressly agreed in writing by Company, in which case retention shall be reduced per the contract documents and released no later than the date of substantial completion. Under no circumstances shall any retention be withheld for the equipment portion of the order. If payment is not received as required, Company may suspend performance and the time for completion shall be extended for a reasonable period of time not less than the period of suspension. Customer shall be liable to Company for all reasonable shutdown, standby and start-up costs as a result of the suspension. Company reserves the right to add to any account outstanding for more than 30 days a service charge equal to 1.5% of the principal amount due at the end of each month. Customer shall pay all costs (including attorneys’ fees) incurred by Company in attempting to collect amounts due and otherwise enforcing these terms and conditions. If requested, Company will provide appropriate lien waivers upon receipt of payment. Customer agrees that, unless Customer makes payment in advance, Company will have a purchase money security interest in all equipment from Company to secure payment in full of all amounts due Company and its order for the equipment, together with these terms and conditions, form a security agreement. Customer shall keep the equipment free of all taxes and encumbrances, shall not remove the equipment from its original installation point and shall not assign or transfer any interest in the equipment until all payments due Company have been made.
6. **Time for Completion.** Except to the extent otherwise expressly agreed in writing signed by an authorized representative of Company, all dates provided by Company or its representatives for commencement, progress or completion are estimates only. While Company shall use commercially reasonable efforts to meet such estimated dates, Company shall not be responsible for any damages for its failure to do so.
7. **Access.** Company and its subcontractors shall be provided access to the Work site during regular business hours, or such other hours as may be requested by Company and acceptable to the Work site’ owner or tenant for the performance of the Work, including sufficient areas for staging, mobilization, and storage. Company’s access to correct any emergency condition shall not be restricted. Customer grants to Company the right to remotely connect (via phone modem, internet or other agreed upon means) to Customer’s building automation system (BAS) and or HVAC equipment to view, extract, or otherwise collect and retain data from the BAS, HVAC equipment, or other building systems, and to diagnose and remotely make repairs at Customer’s request.
8. **Completion.** Notwithstanding any other term or condition herein, when Company informs Customer that the Work has been completed, Customer shall inspect the Work in the presence of Company’s representative, and Customer shall either (a) accept the Work in its entirety in writing, or (b) accept the Work in part and specifically identify, in writing, any exception items. Customer agrees to re-inspect any and all excepted items as soon as Company informs Customer that all such excepted items have been completed. The initial acceptance inspection shall take place within ten (10) days from the date when Company informs Customer that the Work has been completed. Any subsequent re-inspection of excepted items shall take place within five (5) days from the date when Company informs Customer that the excepted items have been completed. Customer’s failure to cooperate and complete any of said inspections within the required time limits shall constitute complete acceptance of the Work as of ten (10) days from date when Company informs Customer that the Work, or the excepted items, if applicable, has/have been completed.
9. **Permits and Governmental Fees.** Company shall secure (with Customer’s assistance) and pay for building and other permits and governmental fees, licenses, and inspections necessary for proper performance and completion of the Work which are legally required when bids from Company’s subcontractors are received, negotiations thereon concluded, or the effective date of a relevant Change Order, whichever is later. Customer is responsible for necessary approvals, easements, assessments and charges for construction, use or occupancy of permanent structures or for permanent changes to existing facilities. If the cost of such permits, fees, licenses and inspections are not included in the Proposal, Company will invoice Customer for such costs.
10. **Utilities During Construction.** Customer shall provide without charge to Company all water, heat, and utilities required for performance of the Work.
11. **Concealed or Unknown Conditions.** In the performance of the Work, if Company encounters conditions at the Work site that are (i) subsurface or otherwise concealed physical conditions that differ materially from those indicated on drawings expressly incorporated herein or (ii) unknown physical conditions of an unusual nature that differ materially from those conditions ordinarily found to exist and generally recognized as inherent in construction activities of the type and character as the Work. Company shall notify Customer of such conditions promptly, prior to significantly disturbing same. If such conditions differ materially and cause an increase in Company’s cost of, or time required for, performance of any part of the Work, Company shall be entitled to, and Customer shall consent by Change Order to, an equitable adjustment in the Contract Price, contract time, or both.
12. **Pre-Existing Conditions.** Company is not liable for any claims, damages, losses, or expenses, arising from or related to conditions that existed in, on, or upon the Work site before the Commencement Date of this Agreement (“Pre-Existing Conditions”), including, without limitation, damages, losses, or expenses involving Pre-Existing Conditions of building envelope issues, mechanical issues, plumbing issues, and/or indoor air quality issues involving mold/mould and/or



fungi. Company also is not liable for any claims, damages, losses, or expenses, arising from or related to work done by or services provided by individuals or entities that are not employed by or hired by Company.

13. Asbestos and Hazardous Materials. Company's Work and other services in connection with this Agreement expressly excludes any identification, abatement, cleanup, control, disposal, removal or other work connected with asbestos, polychlorinated biphenyl ("PCB"), or other hazardous materials (hereinafter, collectively, "Hazardous Materials"). Customer warrants and represents that, except as set forth in a writing signed by Company, there are no Hazardous Materials on the Work site that will in any way affect Company's Work and Customer has disclosed to Company the existence and location of any Hazardous Materials in all areas within which Company will be performing the Work. Should Company become aware of or suspect the presence of Hazardous Materials, Company may immediately stop work in the affected area and shall notify Customer. Customer will be exclusively responsible for taking any and all action necessary to correct the condition in accordance with all applicable laws and regulations. Customer shall be exclusively responsible for and, to the fullest extent permitted by law, shall indemnify and hold harmless Company (including its employees, agents and subcontractors) from and against any loss, claim, liability, fees, penalties, injury (including death) or liability of any nature, and the payment thereof arising out of or relating to any Hazardous Materials on or about the Work site, not brought onto the Work site by Company. Company shall be required to resume performance of the Work in the affected area only in the absence of Hazardous Materials or when the affected area has been rendered harmless. In no event shall Company be obligated to transport or handle Hazardous Materials, provide any notices to any governmental agency, or examine the Work site for the presence of Hazardous Materials.

14. Force Majeure. Company's duty to perform under this Agreement is contingent upon the non-occurrence of an Event of Force Majeure. If Company shall be unable to carry out any material obligation under this Agreement due to an Event of Force Majeure, this Agreement shall at Company's election (i) remain in effect but Company's obligations shall be suspended until the uncontrollable event terminates or (ii) be terminated upon 10 days notice to Customer, in which event Customer shall pay Company for all parts of the Work furnished to the date of termination. An "Event of Force Majeure" shall mean any cause or event beyond the control of Company. Without limiting the foregoing, "Event of Force Majeure" includes: acts of God; acts of terrorism, war or the public enemy; flood; earthquake; tornado; storm; fire; civil disobedience; pandemic insurrections; riots; labor/labour disputes; labor/labour or material shortages; sabotage; restraint by court order or public authority (whether valid or invalid), and action or non-action by or inability to obtain or keep in force the necessary governmental authorizations, permits, licenses, certificates or approvals if not caused by Company; and the requirements of any applicable government in any manner that diverts either the material or the finished product to the direct or indirect benefit of the government.

15. Customer's Breach. Each of the following events or conditions shall constitute a breach by Customer and shall give Company the right, without an election of remedies, to terminate this Agreement or suspend performance by delivery of written notice: (1) Any failure by Customer to pay amounts when due; or (2) any general assignment by Customer for the benefit of its creditors, or if Customer becomes bankrupt or insolvent or takes the benefit of any statute for bankrupt or insolvent debtors, or makes or proposes to make any proposal or arrangement with creditors, or if any steps are taken for the winding up or other termination of Customer or the liquidation of its assets, or if a trustee, receiver, or similar person is appointed over any of the assets or interests of Customer; (3) Any representation or warranty furnished by Customer in this Agreement is false or misleading in any material respect when made; or (4) Any failure by Customer to perform or comply with any material provision of this Agreement. Customer shall be liable to Company for all Work furnished to date and all damages sustained by Company (including lost profit and overhead).

16. Indemnity. To the fullest extent permitted by law, Company and Customer shall indemnify, defend and hold harmless each other from any and all claims, actions, costs, expenses, damages and liabilities, including reasonable attorneys' fees, resulting from death or bodily injury or damage to real or tangible personal property, to the extent caused by the negligence or misconduct of their respective employees or other authorized agents in connection with their activities within the scope of this Agreement. Neither party shall indemnify the other against claims, damages, expenses or liabilities to the extent attributable to the acts or omissions of the other party. If the parties are both at fault, the obligation to indemnify shall be proportional to their relative fault. The duty to indemnify will continue in full force and effect, notwithstanding the expiration or early termination hereof, with respect to any claims based on facts or conditions that occurred prior to expiration or termination.

17. Limitation of Liability. NOTWITHSTANDING ANYTHING TO THE CONTRARY, IN NO EVENT SHALL COMPANY BE LIABLE FOR ANY SPECIAL, INCIDENTAL, INDIRECT CONSEQUENTIAL, OR PUNITIVE OR EXEMPLARY DAMAGES (INCLUDING WITHOUT LIMITATION BUSINESS INTERRUPTION, LOST DATA, LOST REVENUE, LOST PROFITS, LOST DOLLAR SAVINGS, OR LOST ENERGY USE SAVINGS, EVEN IF A PARTY HAS BEEN ADVISED OF SUCH POSSIBLE DAMAGES OR IF SAME WERE REASONABLY FORESEEABLE AND REGARDLESS OF WHETHER THE CAUSE OF ACTION IS FRAMED IN CONTRACT, NEGLIGENCE, ANY OTHER TORT, WARRANTY, STRICT LIABILITY, OR PRODUCT LIABILITY). In no event will Company's liability in connection with the provision of products or services or otherwise under this Agreement exceed the entire amount paid to Company by Customer under this Agreement.

18. Patent Indemnity. Company shall protect and indemnify Customer from and against all claims, damages, judgments and loss arising from infringement or alleged infringement of any United States patent by any of the goods manufactured by Company and delivered hereunder, provided that in the event of suit or threat of suit for patent infringement, Company shall promptly be notified and given full opportunity to negotiate a settlement. Company does not warrant against infringement by reason of Customer's design of the articles or the use thereof in combination with other materials or in the operation of any process. In the event of litigation, Customer agrees to reasonably cooperate with Company. In connection with any proceeding under the provisions of this Section, all parties concerned shall be entitled to be represented by counsel at their own expense.

19. Limited Warranty. Company warrants for a period of 12 months from the date of substantial completion ("Warranty Period") commercial equipment manufactured and installed by Company against failure due to defects in material and manufacture and that the labor/labour furnished is warranted to have been properly performed (the "Limited Warranty"). Trane equipment sold on an uninstalled basis is warranted in accordance with Company's standard warranty for supplied equipment. **Product manufactured by Company that includes required startup and is sold in North America will not be warranted by Company unless Company performs the product start-up.** Substantial completion shall be the earlier of the date that the Work is sufficiently complete so that the Work can be utilized for its intended use or the date that Customer receives beneficial use of the Work. If such defect is discovered within the Warranty Period, Company will correct the defect or furnish replacement equipment (or, at its option, parts therefor) and, if said equipment was installed pursuant hereto, labor/labour associated with the replacement of parts or equipment not conforming to this Limited Warranty. Defects must be reported to Company within the Warranty Period. Exclusions from this Limited Warranty include damage or failure arising from: wear and tear; corrosion, erosion, deterioration; Customer's failure to follow the Company-provided maintenance plan; refrigerant not supplied by Trane; and modifications made by others to Company's equipment. Company shall not be obligated to pay for the cost of lost refrigerant. Notwithstanding the foregoing, all warranties provided herein terminate upon termination or cancellation of this Agreement. No warranty liability whatsoever shall attach to Company until the Work has been paid for in full and then said liability shall be limited to the lesser of Company's cost to correct the defective Work and/or the purchase price of the equipment shown to be defective. Equipment, material and/or parts that are not manufactured by Company are not warranted by Company and have such warranties as may be extended by the respective manufacturer. **THE WARRANTY AND LIABILITY SET FORTH IN THIS AGREEMENT ARE IN LIEU OF ALL OTHER WARRANTIES AND LIABILITIES, WHETHER IN CONTRACT OR IN NEGLIGENCE, EXPRESS OR IMPLIED, IN LAW OR IN FACT, INCLUDING IMPLIED WARRANTIES OF MERCHANTABILITY AND FITNESS FOR A PARTICULAR PURPOSE AND/OR OTHERS ARISING FROM COURSE OF DEALING OR TRADE. COMPANY MAKES NO REPRESENTATION OR WARRANTY EXPRESS OR IMPLIED REGARDING PREVENTION BY THE WORK, OR ANY COMPONENT THEREOF, OF MOLD/MOULD, FUNGUS, BACTERIA, MICROBIAL GROWTH, OR ANY OTHER CONTAMINATES. COMPANY SPECIFICALLY DISCLAIMS ANY LIABILITY IF THE WORK OR ANY COMPONENT THEREOF IS USED TO PREVENT OR INHIBIT THE GROWTH OF SUCH MATERIALS.**

20. Insurance. Company agrees to maintain the following insurance while the Work is being performed with limits not less than shown below and will, upon request from Customer, provide a Certificate of evidencing the following coverage:

Commercial General Liability	\$2,000,000 per occurrence
Automobile Liability	\$2,000,000 CSL
Workers Compensation	Statutory Limits



If Customer has requested to be named as an additional insured under Company's insurance policy, Company will do so but only subject to Company's manuscript additional insured endorsement under its primary Commercial General Liability policies. In no event does Company waive its right of subrogation.

21. Commencement of Statutory Limitation Period. Except as to warranty claims, as may be applicable, any applicable statutes of limitation for acts or failures to act shall commence to run, and any alleged cause of action stemming therefrom shall be deemed to have accrued, in any and all events not later than the last date that Company or its subcontractors physically performed work on the project site.

22. General. Except as provided below, to the maximum extent provided by law, this Agreement is made and shall be interpreted and enforced in accordance with the laws of the state or province in which the Work is performed, without regard to choice of law principles which might otherwise call for the application of a different state's or province's law. Any dispute arising under or relating to this Agreement that is not disposed of by agreement shall be decided by litigation in a court of competent jurisdiction located in the state or province in which the Work is performed. Any action or suit arising out of or related to this Agreement must be commenced within one year after the cause of action has accrued. To the extent the Work site is owned and/or operated by any agency of the Federal Government, determination of any substantive issue of law shall be according to the Federal common law of Government contracts as enunciated and applied by Federal judicial bodies and boards of contract appeals of the Federal Government. This Agreement contains all of the agreements, representations and understandings of the parties and supersedes all previous understandings, commitments or agreements, oral or written, related to the subject matter hereof. This Agreement may not be amended, modified or terminated except by a writing signed by the parties hereto. No documents shall be incorporated herein by reference except to the extent Company is a signatory thereon. If any term or condition of this Agreement is invalid, illegal or incapable of being enforced by any rule of law, all other terms and conditions of this Agreement will nevertheless remain in full force and effect as long as the economic or legal substance of the transaction contemplated hereby is not affected in a manner adverse to any party hereto. Customer may not assign, transfer, or convey this Agreement, or any part hereof, or its right, title or interest herein, without the written consent of the Company. Subject to the foregoing, this Agreement shall be binding upon and inure to the benefit of Customer's permitted successors and assigns. This Agreement may be executed in several counterparts, each of which when executed shall be deemed to be an original, but all together shall constitute but one and the same Agreement. A fully executed facsimile copy hereof or the several counterparts shall suffice as an original.

23. Equal Employment Opportunity/Affirmative Action Clause. Company is a federal contractor that complies fully with Executive Order 11246, as amended, and the applicable regulations contained in 41 C.F.R. Parts 60-1 through 60-60, 29 U.S.C. Section 793 and the applicable regulations contained in 41 C.F.R. Part 60-741; and 38 U.S.C. Section 4212 and the applicable regulations contained in 41 C.F.R. Part 60-250 Executive Order 13496 and Section 29 CFR 471, appendix A to subpart A, regarding the notice of employee rights in the United States and with Canadian Charter of Rights and Freedoms Schedule B to the Canada Act 1982 (U.K.) 1982, c. 11 and applicable Provincial Human Rights Codes and employment law in Canada.

24. U.S. Government Work.

The following provision applies only to direct sales by Company to the US Government. The Parties acknowledge that all items or services ordered and delivered under this Agreement are Commercial Items as defined under Part 12 of the Federal Acquisition Regulation (FAR). In particular, Company agrees to be bound only by those Federal contracting clauses that apply to "commercial" suppliers and that are contained in FAR 52.212-5(e)(1). Company complies with 52.219-8 or 52.219-9 in its service and installation contracting business.

The following provision applies only to Indirect sales by Company to the US Government. As a Commercial Item Subcontractor, Company accepts only the following mandatory flow down provisions: 52.219-8; 52.222-26; 52.222-35; 52.222-36; 52.222-39; 52.247-64. If the Work is in connection with a U.S. Government contract, Customer certifies that it has provided and will provide current, accurate, and complete information, representations and certifications to all government officials, including but not limited to the contracting officer and officials of the Small Business Administration, on all matters related to the prime contract, including but not limited to all aspects of its ownership, eligibility, and performance. Anything herein notwithstanding, Company will have no obligations to Customer unless and until Customer provides Company with a true, correct and complete executed copy of the prime contract. Upon request, Customer will provide copies to Company of all requested written communications with any government official related to the prime contract prior to or concurrent with the execution thereof, including but not limited to any communications related to Customer's ownership, eligibility or performance of the prime contract. Customer will obtain written authorization and approval from Company prior to providing any government official any information about Company's performance of the work that is the subject of the Proposal or this Agreement, other than the Proposal or this Agreement.

25. Limited Waiver of Sovereign Immunity. If Customer is an Indian tribe (in the U.S.) or a First Nation or Band Council (in Canada), Customer, whether acting in its capacity as a government, governmental entity, a duly organized corporate entity or otherwise, for itself and for its agents, successors, and assigns: (1) hereby provides this limited waiver of its sovereign immunity as to any damages, claims, lawsuit, or cause of action (herein "Action") brought against Customer by Company and arising or alleged to arise out of the furnishing by Company of any product or service under this Agreement, whether such Action is based in contract, tort, strict liability, civil liability or any other legal theory; (2) agrees that jurisdiction and venue for any such Action shall be proper and valid (a) if Customer is in the U.S., in any state or United States court located in the state in which Company is performing this Agreement or (b) if Customer is in Canada, in the superior court of the province or territory in which the work was performed; (3) expressly consents to such Action, and waives any objection to jurisdiction or venue; (4) waives any requirement of exhaustion of tribal court or administrative remedies for any Action arising out of or related to this Agreement; and (5) expressly acknowledges and agrees that Company is not subject to the jurisdiction of Customer's tribal court or any similar tribal forum, that Customer will not bring any action against Company in tribal court, and that Customer will not avail itself of any ruling or direction of the tribal court permitting or directing it to suspend its payment or other obligations under this Agreement. The individual signing on behalf of Customer warrants and represents that such individual is duly authorized to provide this waiver and enter into this Agreement and that this Agreement constitutes the valid and legally binding obligation of Customer, enforceable in accordance with its terms.

1-26.251-10(0315)

Supersedes 1-26.251-10(0614)

RECOMMENDATIONS

Begin a controls migration with the improvements addressing aging communication infrastructure, multiple system from ends, occupancy and CO₂ monitoring to improve the overall learning environment while continuing to meet the districts energy policy.

CURRENT ENVIRONMENT

- Aging Building Automation Infrastructure
- Multiple Building Automation Systems
- Analytics and Coaching for Optimization

BUSINESS IMPACT

These improvements will enhance your learning objective by providing a more comfortable environment for students, teachers and staff – and lead to improving the educational environment.

KENNEDY MIDDLE SCHOOL

Trane recommend replacing the remaining Johnson head-end controllers and unit controllers for full integration of the existing equipment into the Trane Enterprise System (Ensemble). Tracer system controller (SC) bring BACnet controllers into the building with new unit controllers. We will include replacing the remaining pneumatic VAV boxes with DDC controls. This solution updates the building to match the referendum renovations and additions with wireless, occupancy and CO₂ space sensors migration.

HIGH SCHOOL

Similar to Kennedy the replacement of the Johnson system and unit controllers will take place. This will allow Trane to integrate the remaining equipment with the wireless, occupancy and CO₂ space sensors for additional metrics to assist in analysis of the learning environments. Additionally, we would integrate the new equipment that was included in High School BP#1 as well as the remaining pneumatic spaces.

GERMANTOWN SCHOOL DISTRICT

We will begin the project with standardization of the point names, graphics and site set-up. Trane will meet with the district to establish metrics for a successful project and objectives as well as goals for the project. The end game will meet the standards developed by the district within their energy policy while maintaining our commitments to help reach for excellence.



Controls Upgrade		
KMS	HS	GSD
\$216,500	\$575,500	\$12,300

Final pricing to follow based on site evaluation and district controls development.

BUSINESS AND SUSTAINABILITY IMPACT

These solutions will address the aging communication infrastructure, multiple user interfaces and district standardization. As with the implementation of the Performance Contract, Trane will focus on student learning and staff training and coaching for operational excellence. The goal is to enhance the learning environment with advancing the building controls in incorporating the latest sensor technology (wireless temperature, occupancy and CO₂).

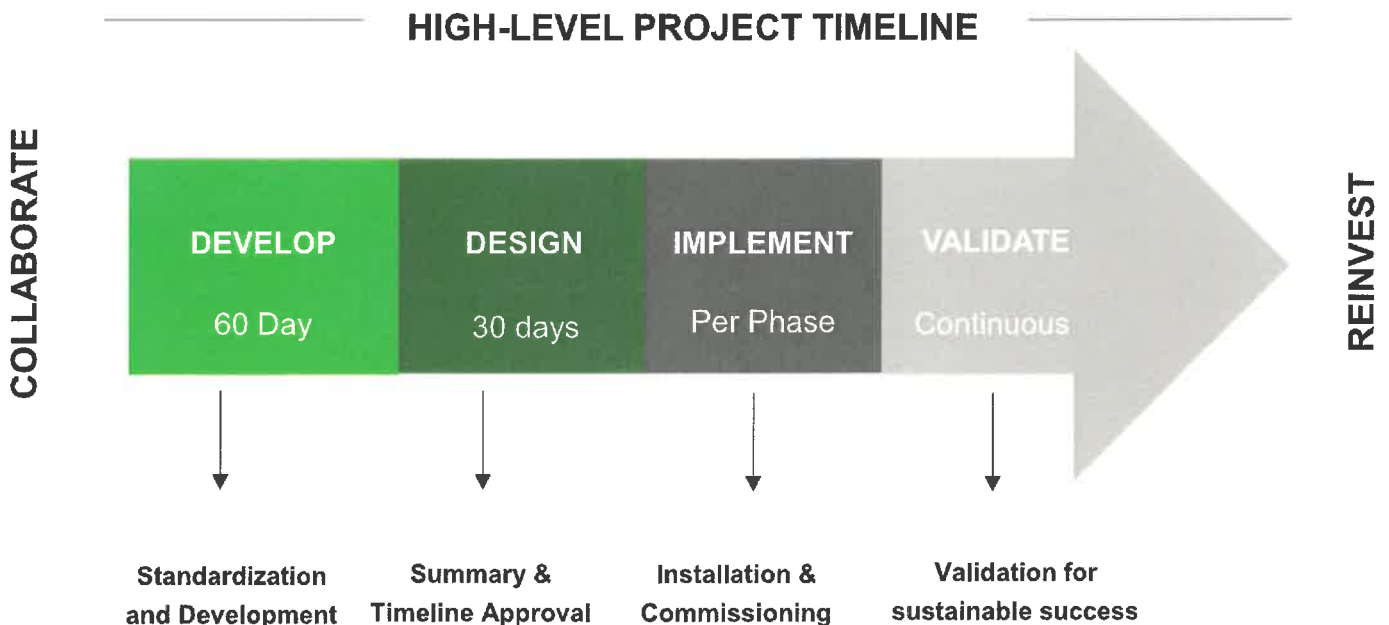
VALIDATION

Once this project is complete, Trane will work with you to validate that the improvements have achieved the expected operational results.

Next Steps >

Trane requests Germantown's authorization to proceed with the project identified above. Work can begin once a full building assessment with our engineer, technician, subcontractor and project manager can review the site. The project timeline will be based on the phases and desired timeframe.

Contact Ashley Henderson at (414) 208-9007 or ashley.henderson@trane.com



*Full proposal to follow, replacement of valves, sensors, relays will be based on site evaluation as well as VAV compatibility, no asbestos abatement, old wiring will be abandoned in place and work will take place during normal Trane Business hours

Germantown School District

November, 2017

GERMANTOWN SCHOOL DISTRICT
DISTRICT ADMINISTRATIVE OFFICES
N104 W13840 DONGES BAY ROAD
GERMANTOWN, WI 53022-4499
(262) 253-3900
FAX (262) 251-6999

Dear Community Partner:

“There are not enough qualified, interested, and capable people entering the manufacturing job markets to fill the labor needs.” This has been a common message we have heard from employers for some time now. Studies consistently show that the pipeline for future employees in manufacturing is shrinking. This is particularly problematic given that the number of people old enough to retire is larger than the number of teen workers. It is critical to attract youth into careers in manufacturing in order to fill the labor force needs. It’s becoming more and more important for schools, business and industry, and the community to partner in the development of a highly-skilled work force to meet employers’ needs.

The Germantown School District is committed to providing a quality manufacturing, technology and engineering program at the middle and high school levels. Students come out of the program with real-world high-tech manufacturing and engineering experience. We want to strengthen and improve the program so we can recruit more students into fulfilling careers in manufacturing. This is where the jobs will be, and this is where our community needs good, capable workers.

The Germantown School District community has passed a referendum to update its schools. An important part of that referendum was to update the high school Tech Ed facilities, which are old, unappealing, and out of date. \$_____ million has been designated to create all new, updated, and expanded space for the program, including \$_____ for badly needed new equipment. The goal is to provide high-precision, modern manufacturing learning labs able to engage students in authentic, real-world experiences related to high-tech careers in manufacturing and engineering.

Our challenge is to acquire up-to-date equipment for these learning labs. Almost all of the current equipment is outdated, no longer functioning, or can no longer hold needed tolerances for the precision needed. Many of the large machines we have may not even survive a move. Our challenge is that there is simply not enough referendum money available to purchase all that is needed to provide students with the kind of experiences that will develop their skills and entice them into a career in manufacturing. We need help from business and industry in the community with equipment donations and financial contributions to support the opening of the new tech ed facilities in fall of 2018.

Attached is information explaining sponsorship opportunities. We, in the Germantown School District are committed to preparing students for excellent careers in business, technology and manufacturing. We look forward to partnering with you to fill your employee pipeline needs.

Sincerely,

Jeff Holmes
Superintendent Germantown School District

Tech Ed Equipment Needs

<u>Immediate Need</u>	<u>Important to Advance Program</u>	<u>Future Additions</u>
FABRICATION LAB		
HAAS Super Mini Mill \$50K		
Epilog Laser \$22K	Rapid Prototyper \$60K	Vinyl Cutter \$2K
Laser Ventilation \$3K	MakerBot Digitizer (3D scan) \$900	
Band Saw \$800	Cube Rapid Prototyper	
Drill Press \$800	Z18 Markerbot 3D Printer	
Misc Tools and Bits \$3K	FANUC Robot LR Mate \$70K	
=====	=====	
Total	\$79,600	\$130,900

MANUFACTURING		
HAAS Tool Room Mill (2) \$140K	Baileigh Drill Press \$3.1K	Hydraulic Ironwork \$13K
HAAS Tool Room Lathe \$40K	Belt and Disc Grinder \$2.2K	CNC Plasma Cutter \$30K
Kent Milling Machine (4) \$64K	Press Brake \$30K	Arbor Press \$500
Kent Lathe Machine (16) \$192K	Tube Bender \$7K	Hole Saw Notcher \$200
Laguna CO2Laser \$30K	Pittsburgh Machine \$4K	
Kent W-916A Bandsaw \$10K	Bead Roller \$300	
Compact Metal Shear \$15K	Phoenix CMM Machine \$50K	
Corner Notcher \$600	Corner Notcher \$600	
Manual Slip Roll Machine \$1K	Manual Slip Roll Machine \$800	
Box and Pan Brake \$2K	Box and Pan Brake \$2K	
ReTooling \$30K	Sheet Metal Punch \$800	
=====	Throatless Shear \$800	
Total	\$461,600	\$101,600

Immediate Need

Important to Advance Program

Future Additions

WELDING

PROJECT LEAD THE WAY

Jig Table (3) \$6.9K
 Table Accessory Kit (3) \$8.4K
 14" Dry-Cut Machine (2) \$1.6K
 XMT 304 CC/CV (12) \$60K
 ReTooling \$1K
 =====
Total \$77,900

Benchmill 6000 Bundle \$20K
 Scorbotr ER 4uRobot SIM \$29K
 HTC VIVE wi Computer \$3K
 VEX Upgrade \$16K
 =====
\$68,000

WOODS

Tool Cabinet (4) \$5.2K
 Tool Cabinet 2 \$2.5K
 Work Bench (5) \$12.5K
 CNC Router \$32K
 =====
Total \$51,700

Short Bed Lathe \$3.5K
 Laguna Wood Jointer (2) \$6.2K
 ReTooling \$5K
 =====
\$14,900

Door Shaper \$6K
 Panel Saw \$3K
 Epilog Laser \$22K
 Laser Ventalation \$3K

AUTOS

Alignment Machine \$35K
 AC Recovery \$5K
 Post Lift \$5K
 =====
Total \$45,000

Shure Work Bench (10) \$4.5K
 Miller Wire Welder \$2K
 ReTooling \$15K
 =====
\$21,500

Brake Lathe \$2K
 Low Profile Tire Mch \$15K
 Scan Tool \$5K
 Engine Crane \$350
 H-Press \$350

Germantown School District Technology and Engineering Program

Equipment Sponsorship Opportunities

The Technology and Engineering program at Germantown High School will be relocated into 6 (six) new labs by fall of 2018: Manufacturing, Fabrication, Welding, Woods, Project Lead the Way, Autos. Each of the labs need new equipment to provide up-to-date experiences for students. Sponsors may donate in three different ways: 1) Generally for purchasing priorities decided by school personnel; 2) Donate to a specific lab; 3) Donate either the funds for or the actual piece of equipment. Recognition will be given for all donations.

Sponsorship Levels

\$100,000 Elite Sponsor

- Naming rights for one Tech Ed lab area with company name displayed
- 4' color logo placement on the Wall of Sponsors in the Technology hallway at the High School
- Logo prominently placed on the inside of the lab/classroom providing visibility to students, organizations touring the facility, and exposure during media events
- Company name listed as an Elite Sponsor and logo displayed on the Germantown School District website for Technology Education Department
- Recognition as an Elite Sponsor on promotional materials
- Company name listed as an Elite Sponsor in all donor related press releases
- Opportunity to speak to students in class about your business
- Opportunity to display your company at open houses
- Opportunity to work with the HS Tech Ed department on curriculum
- Opportunity for students to tour your business
- Priority for Co-Op partnership

\$50,000 + Platinum Sponsor

- 3' color logo placement on the Wall of Sponsors in the Technology hallway at the High School
- Logo prominently placed on the inside of the lab/classroom providing visibility to students, organizations touring the facility, and exposure during media events
- Company name listed as an Elite Sponsor and logo displayed on the Germantown School District website for Technology Education Department
- Recognition as a Platinum Sponsor on promotional materials
- Company name listed as an Elite Sponsor in all donor related press releases
- Opportunity to speak to students in class about your business
- Opportunity to display your company at open houses
- Opportunity to work with the HS Tech Ed department on curriculum
- Opportunity for students to tour your business
- Priority for Co-Op partnership

\$25,000 Gold Sponsor

- 2' color logo placement on the Wall of Sponsors in the Technology hallway at the High School
- Logo prominently placed on the inside of the lab/classroom providing visibility to students, organizations touring the facility, and exposure during media events
- Company name listed as a Platinum Sponsor and logo displayed on the Germantown School District website for Technology Education Department
- Recognition as a Platinum Sponsor on promotional materials
- Company name listed as a Gold Sponsor in all donor related press releases
- Opportunity to speak to students in class about your business
- Opportunity to display your company at open houses
- Opportunity to work with the HS Tech Ed department on curriculum
- Opportunity for students to tour your business
- 2nd level priority for Co-Op partnership

\$10,000 Silver Sponsor

- 1' color logo placement on the Wall of Sponsors in the Technology hallway at the High School
- Logo placed on the inside of the lab/classroom providing visibility to students, organizations touring the facility, and exposure during media events
- Company name listed as a Silver Sponsor and logo displayed on the Germantown School District website for Technology Education Department
- Recognition as a Silver Sponsor on promotional materials
- Company name listed as a Silver Sponsor in all donor related press releases

\$5,000 Bronze Sponsor

- 6" color logo placement on the Wall of Sponsors in the Technology hallway at the High School
- Logo placed on the inside of the lab/classroom providing visibility to students, organizations touring the facility, and exposure during media events
- Company name listed as a Bronze Sponsor and logo displayed on the Germantown School District website for Technology Education Department
- Recognition as a Bronze Sponsor on promotional materials
- Company name listed as a Bronze Sponsor in all donor related press releases

\$2,500 Community Sponsor

- Logo placed on the inside of the lab/classroom providing visibility to students, organizations touring the facility, and exposure during media events
- Company name listed as a Community Sponsor and logo displayed on the Germantown School District website for Technology Education Department
- Recognition as a Community Sponsor on promotional materials
- Company name listed as a Community Sponsor in all donor related press releases

Contributions will be recognized for five years.

Germantown School District Technology Education Donation Form

The Germantown School District High School Technology Department needs business and industry support with financial contributions or equipment donations to support the move into the new Tech Ed facilities in the fall of 2018. Your sponsorship will help the Germantown School District purchase machinery and equipment that will attract and prepare students to fill workforce needs. We believe the new facilities, provided through the community building referendum, along with badly needed new equipment will have a dramatic impact on the number of students that enter manufacturing careers in Germantown and the surrounding area.

Thank you for your contribution to our students and the future workforce.

Sincerely,

Jeff Holmes
Superintendent, Germantown School District

<p>Donation level: Please select your level of sponsorship:</p> <ul style="list-style-type: none"><input type="checkbox"/> \$100,000 Elite Sponsor<input type="checkbox"/> \$50,000 Platinum Sponsor<input type="checkbox"/> \$25,000 Gold Sponsor<input type="checkbox"/> \$10,000 Silver Sponsor<input type="checkbox"/> \$5,000 Bronze<input type="checkbox"/> \$2,500 Community Sponsor <p>Payment Options:</p> <ul style="list-style-type: none"><input type="checkbox"/> Full payment by check<input type="checkbox"/> Please invoice our organization<input type="checkbox"/> Quarterly over 1 / 2 years <i>(circle)</i><input type="checkbox"/> Biannually over 1 / 2 years <i>(circle)</i><input type="checkbox"/> Annually over 1 / 2 years <i>(circle)</i> <p>Donation Preference:</p> <ul style="list-style-type: none"><input type="checkbox"/> None<input type="checkbox"/> Manufacturing<input type="checkbox"/> Fabrication<input type="checkbox"/> Woods and Construction<input type="checkbox"/> Project Lead the Way<input type="checkbox"/> Autos	<p>Equipment Donation: Please list the equipment items to be donated. The value of the equipment will be included in your sponsorship level. <i>(NOTE: New equipment as identified is most appreciated. Used equipment will be evaluated for acceptance.)</i></p> <p>Approximate value: \$ _____</p> <p>Expected date of equipment donation: _____</p>		
<table style="width: 100%;"><tr><td style="width: 50%;">Company Name:</td><td style="width: 50%;">Contact Person/Information:</td></tr></table>		Company Name:	Contact Person/Information:
Company Name:	Contact Person/Information:		
<small>All donations are tax deductible. Checks may be made payable to "Germantown School District," N104 W13840 Donges Bay Road, Germantown WI 53022. For more information or questions on how to donate, please contact Ric Ericksen, Business Manager, at 262-253-3908 or rericksen@gsdwi.org.</small>			

GERMANTOWN SCHOOL DISTRICT

TO: Board Members

TOPIC: Donations

FROM: Jeff Holmes

BOARD MEETING: November 13, 2017

DATE: November 7, 2017

AGENDA ITEM: VIII.A.

Please act on the donation requests described below. The Board of Education should consider acceptance of the donations in accordance with Board Policy 7230 – Gifts, Grants, and Bequests.

1. Accept the donation of \$1,000 from the Kennedy Middle School PTA to 6th grade Junior Achievement.
2. Accept the donation of \$500 from the Kennedy Middle School PTA to the all-school acknowledgement day on November 22nd.

RECOMMENDATION: Thank the donors for their generosity and approve the donations as listed.

GERMANTOWN HIGH SCHOOL

OVERNIGHT FIELD TRIP REQUEST FORM

Name of Person Completing this Form:

Jonathan Bell

Explanation of Field Trip:

GHS Band Trip to Orlando, FL and Kennedy Space Center. Performance at Disney Park and "You're Instrumental" workshop.

Date Submitted to Building Principal:

Date Submitted to Superintendent's Office:

Location of Field Trip (Be Specific):

Orlando FL. Disney Magic Kingdom, Hollywood Studios, Animal Kingdom and Kennedy Space Center

Number of Students on Field Trip:

150

Number of Advisors on Field Trip:

14

(2 teachers 12 chaperones)

Date(s) of Field Trip:

4/19/2019 - 4/23/19

-Spring Break 2019

BREAKDOWN OF FIELD TRIP COSTS FOR STUDENT AND FOR ADVISOR

	FOR STUDENTS		FOR ADVISORS	
	Board Funding Portion	Club Funding Portion	Board Funding Portion	Club Funding Portion
Registration	\$ -	\$ 1500 -	\$ -	\$ 300 -
Transportation	\$ -	\$ -	\$ -	\$ -
Lodging	\$ -	\$ -	\$ -	\$ -
Meals	\$ -	\$ -	\$ -	\$ -
Other (please list)	\$ -	\$ 50 -	\$ -	\$ 50 -
-Transportation to MKE	\$ -	\$ -	\$ -	\$ -
- Equipment truck Rental for Instruments	\$ -	\$ -	\$ -	\$ -
	\$ -	\$ -	\$ -	\$ -
	\$ -	\$ -	\$ -	\$ -
	\$ -	\$ -	\$ -	\$ -
Total Cost	\$ -	\$ 1550 -	\$ -	\$ 850 -
Total Students or Advisors from Above	-	-	-	-
Cost Per Student or Advisor	#DIV/0!	#DIV/0!	#DIV/0!	#DIV/0!
Grand Total Cost	\$ 232,500 -			

JB

GERMANTOWN HIGH SCHOOL

OVERNIGHT FIELD TRIP REQUEST FORM

Name of Person Completing this Form:

BRIANNA BURGESS

Explanation of Field Trip:

WACPC State Cheer Competition

Date Submitted to Building Principal:

Date Submitted to Superintendent's Office:

Location of Field Trip (Be Specific):

300 Harborview plaza LaCrosse, WI 54601

Number of Students on Field Trip: 19

Date(s) of Field Trip:

3/2/18-3/3/18

Number of Advisors on Field Trip: 1

BREAKDOWN OF FIELD TRIP COSTS FOR STUDENT AND FOR ADVISOR

	FOR STUDENTS		FOR ADVISORS	
	Board Funding Portion	Club Funding Portion	Board Funding Portion	Club Funding Portion
Registration		\$ 380.00	\$ -	\$ -
Transportation	\$ -	\$ -	\$ -	\$ -
Lodging		\$ 900.00	\$ -	\$ -
Meals		\$ 380.00	\$ -	\$ -
Other (please list)	\$ -	\$ -	\$ -	\$ -
	\$ -	\$ -	\$ -	\$ -
	\$ -	\$ -	\$ -	\$ -
	\$ -	\$ -	\$ -	\$ -
	\$ -	\$ -	\$ -	\$ -
	\$ -	\$ -	\$ -	\$ -
	\$ -	\$ -	\$ -	\$ -
Total Cost	\$ -	\$ 1,660.00	\$ -	\$ -
Total Students or Advisors from Above	19	19	1	1
Cost Per Student or Advisor	\$ -	\$ 87.37	\$ -	\$ -
Grand Total Cost	\$ 1,660.00			



