

RESILIENT NJ RARITAN RIVER AND BAY COMMUNITIES

Carteret, Woodbridge, Perth Amboy, South Amboy, Sayreville, South River, and Old Bridge have experience with flooding during heavy rainstorms and coastal storms, such as Hurricane Sandy. Flooding from rainfall, coastal storms, and high tides is expected to worsen over time as climate change causes more intense rainfall and sea level rise.

Launched in April, the Resilient NJ - Raritan River and Bay Communities project brings together the people who live, work, and play in the area, alongside government, business, infrastructure providers, engineers, scientists, and community organizations to create a clear action plan to address current and future flooding, while improving quality of life.

WHAT IS “RESILIENCE”?

Resilience means being able to adapt to changing conditions and grow in the face of challenges. In the context of flooding, we mean shaping and enhancing strong social fabrics and infrastructure to “bounce back” and “bounce forward” after storms.

WHAT IS “RISK”?

Risk is the potential for a hazard, such as flooding, to have negative impacts. Flood risk is the potential for water to create damage and disruption in our communities. Flood risk increases when the hazard increases, such as by sea level rise or more intense rainfall, or when more people are in harm’s way.

RESILIENT NJ WILL...

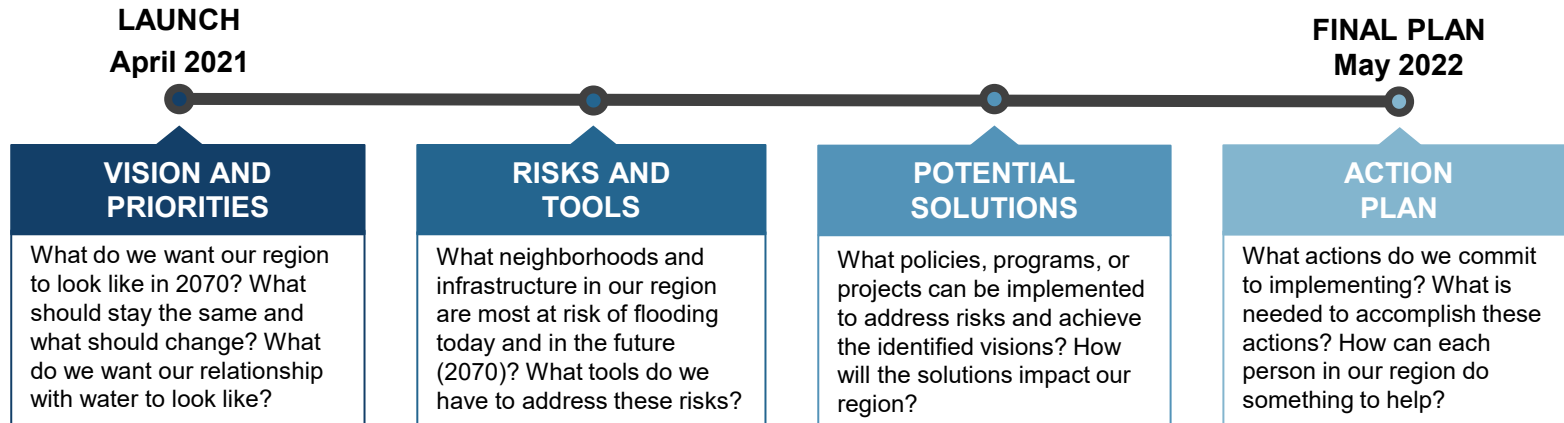
- Develop solutions to address flood risk using the best available data, inclusive decision-making principles, and input from you!
- Include actions that range from projects that change our built environment, to new policy, to education and coordination initiatives.
- Build relationships between community members, businesses, non-profit organizations, utilities, infrastructure providers, and others across our region to foster future collaboration on resiliency and other issues.

See the reverse of this flyer for details on the timeline and how to *GET INVOLVED* in Resilient NJ.



RESILIENT NJ RARITAN RIVER AND BAY COMMUNITIES PROJECT TIMELINE

Together, we will create a roadmap for addressing current and future flooding by completing the following stages:



GET INVOLVED

Your input at this stage of the project will help to shape the vision for our region's future, identify the parts of your community that are most important to you, and develop and evaluate potential alternatives.

WAYS TO PARTICIPATE NOW

- Visit our interactive website: www.resilient.nj.gov/rrbc
- Download our engagement app (scan QR code)
- Follow our @ResilientRRBC accounts on Facebook, Twitter, or Instagram
- Respond to the [VISION AND PRIORITIES SURVEY](#)
- Receive updates using the [EMAIL LIST SIGN-UP](#)
- Leave a message on our multilingual project hotline at 732-661-3808
- Send questions to our project email address at ResilientRRBC@dep.nj.gov
- Help get the word out by sharing this flyer!

COMING SOON:

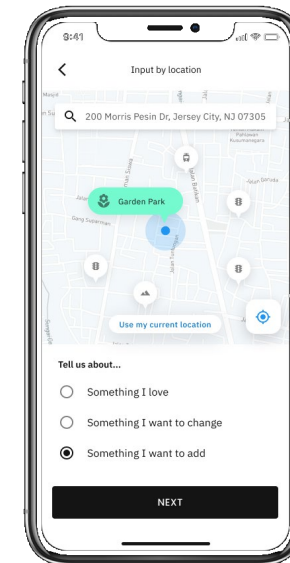
- *Virtual public meetings, focus groups, and others TBD*

DOWNLOAD THE IRYS APP:

SURVEY



iOS DEVICES



EMAIL SIGN-UP



ANDROIDS

