

GERMANTOWN SCHOOL DISTRICT

**Notice of Building Committee Meeting
October 12, 2020
6:30 PM**

Germantown School District
Administration Building
N104 W13840 Donges Bay Road
Germantown, WI 53022

AGENDA

- I. Meeting Called to Order**
- II. Roll Call**
- III. Agenda Revisions and Approval**
- IV. Approve Minutes**
 - A. September 14, 2020
- V. Reports & Updates**
 - A. Director of Buildings & Grounds: Capital Projects & Facility Services
- VI. Unfinished Business - Discussion with Possible Action**
 - A. Fund 41 Capital Projects List – 5 Year Plan
- VII. New Business - Discussion with Possible Action**
 - None
- VIII. Adjourn**

Note: School Board members who are not members of the Building Committee may be present at this Building Committee meeting.

GERMANTOWN SCHOOL DISTRICT

TO: Building Committee

TOPIC: Approval of September 14, 2020
Minutes

FROM: Brittany Altendorf

BUILDING COMMITTEE MEETING:
October 12, 2020

DATE: October 8, 2020

AGENDA ITEM: IV. A.

ATTACHMENTS: See next page(s).

RECOMMENDATION: Motion to approve the September 14, 2020 Building Committee meeting minutes as presented.

GERMANTOWN SCHOOL DISTRICT
Minutes of September 14, 2020 Building Committee Meeting

6:30 p.m.

Germantown High School
Performing Arts Center
W180 N11501 River Lane
Germantown, WI 53022

1. The meeting of the Building Committee was called to order by Chair Medved at 6:30 p.m. Building Committee Members Present: Brian Medved, Michael Loth, Mark Koenke, Ray Borden, District Administration and Staff, Brett Stousland, Brittany Altendorf, Don Erickson,
2. Motion by Borden to approve the agenda as presented. Second by Koenke. Motion carried.
3. Motion by Borden to approve the August 10, 2020, Building Committee minutes as presented. Second by Koenke. Motion carried.
4. Erickson led discussions on Capital Projects and Facility Services by describing the items included in the Committee packet. Committee discussion on the Amy Belle School infiltration basin, with discussion on the pitch, water sitting in the basin, and PRA's design for it to infiltrate and not drain off. Erickson updated the Committee on the high school pool tiling work that needs to be completed and on Rockfield's elevator work that is expected to be completed in October during the inservice days to avoid disruption to the school day. Medved asked Erickson for an update on the parking lot across from Amy Belle School and his communication with the Village of Richfield. Erickson will update the Committee at the October Building Committee meeting.
5. Erickson mentioned that an updated list was included in the Committee packet and that he has added and removed some projects from the Capital Projects/Fund 41 list, but it is prioritize and at some point he would like to present it to the Committee as a five year plan. Medved said he appreciates the prioritized list and that it would be nice to see dates with the projects. Erickson will continue to work on this.
6. No New Business.
7. Motion by Loth to adjourn the meeting. Second by Borden. Motion carried.
8. Meeting adjourned at 6:38 p.m.

GERMANTOWN SCHOOL DISTRICT

TO:	Building Committee	TOPIC: Capital Projects & Facility Services
FROM:	Brittany Altendorf	BUILDING COMMITTEE MEETING: October 12, 2020
DATE:	October 8, 2020	AGENDA ITEM: V. A.

ATTACHMENTS: Report provided by Don Erickson, Director of Buildings & Grounds. Report included in packet.

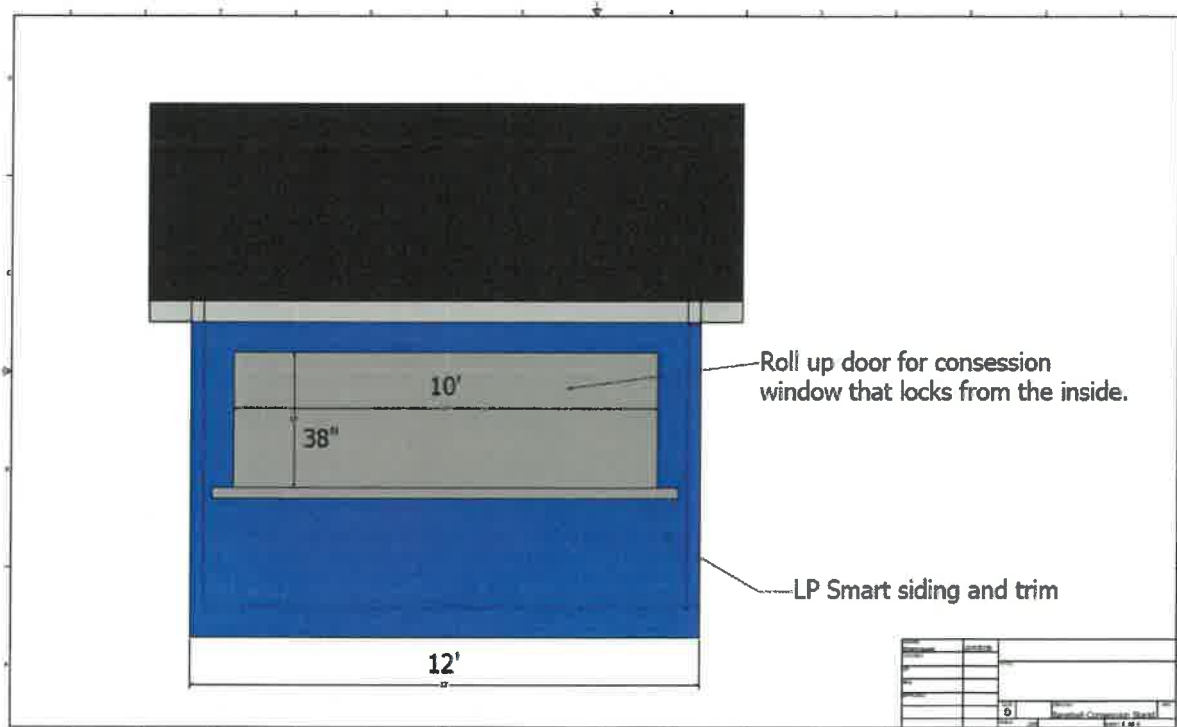
RECOMMENDATION: None

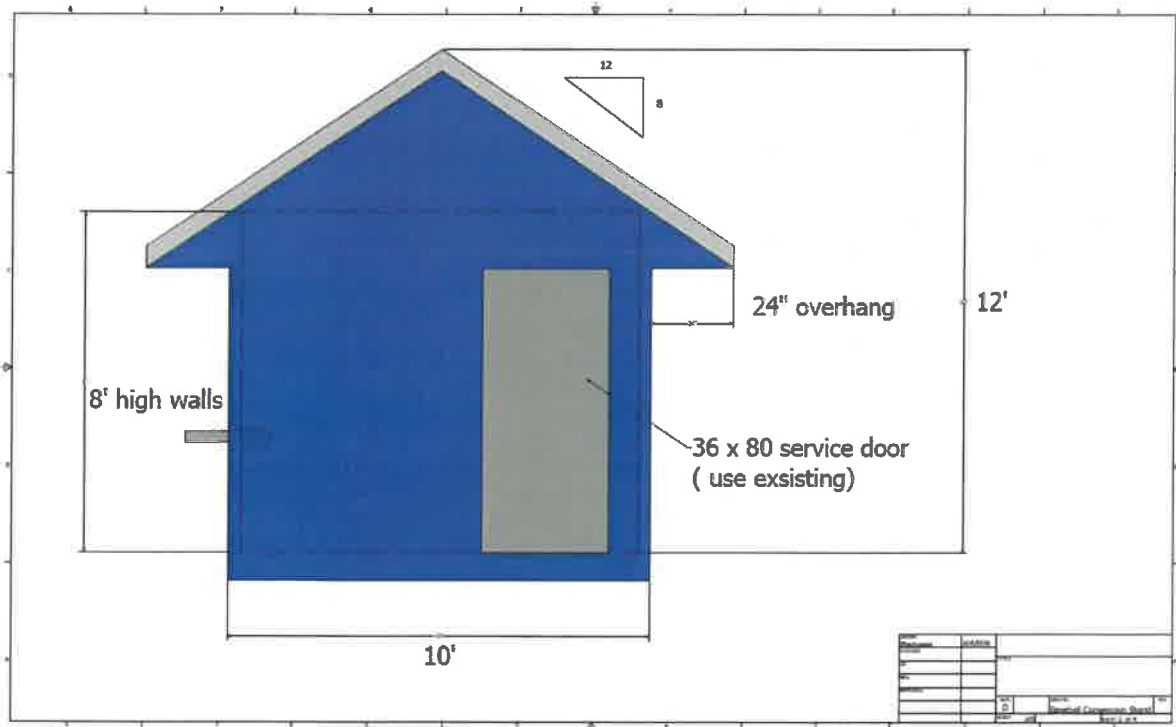
Building Committee October 12, 2020

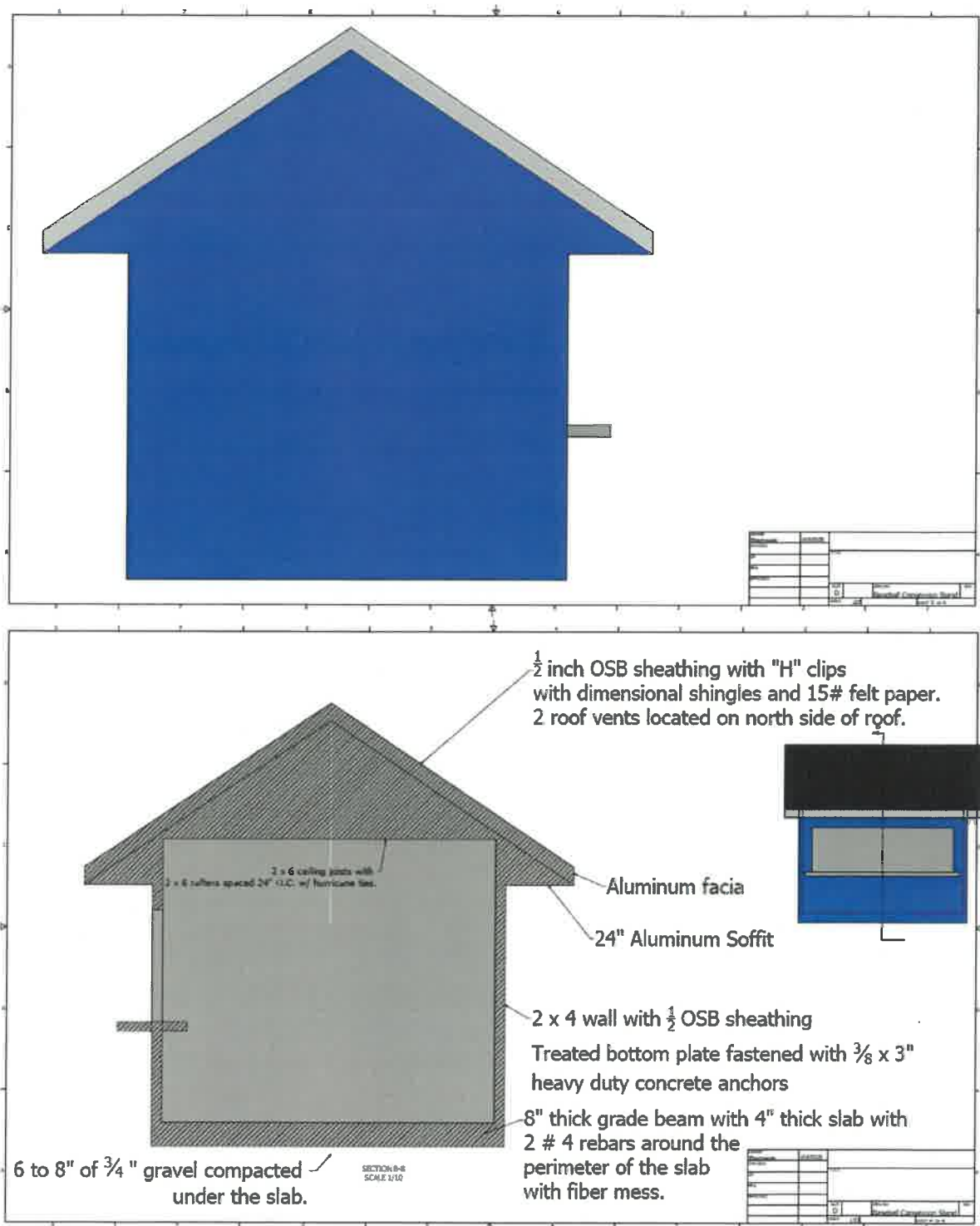
Germantown High School

Baseball Concessions Stand

Jim Grater from the 3n2 Booster Club is working with Jon Stochowiak to replace the baseball concessions stand at Germantown High School as a class project. The new stand will remain at the same location and the size.







Hall Lights

LED lights have been installed in the halls at Germantown High School. The lighting in the halls has been greatly improved.



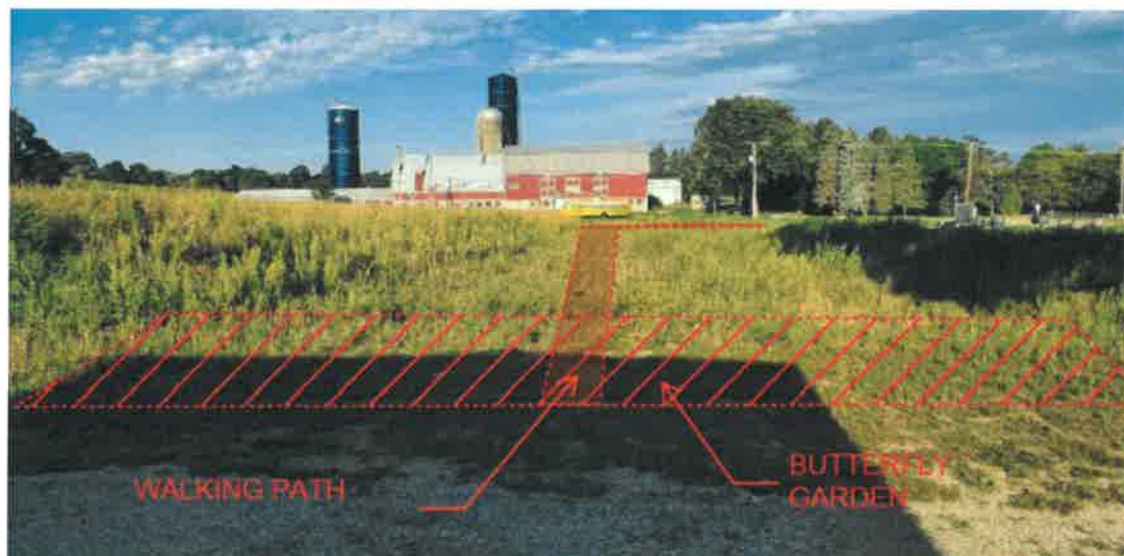
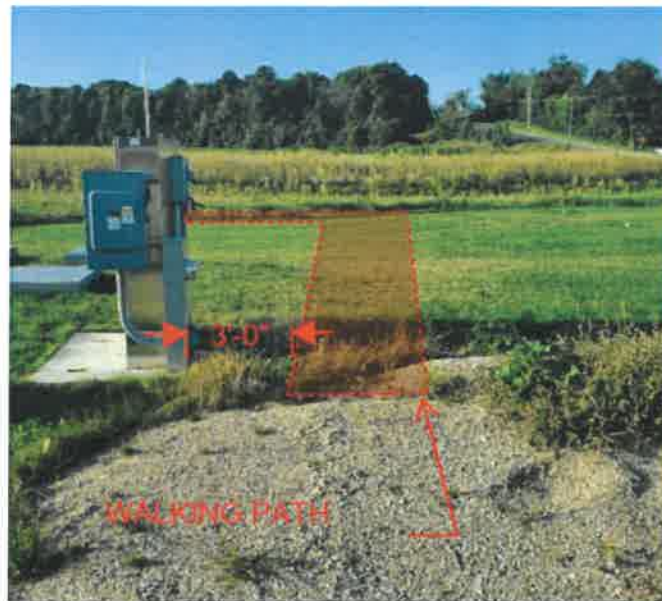
Pool Deck

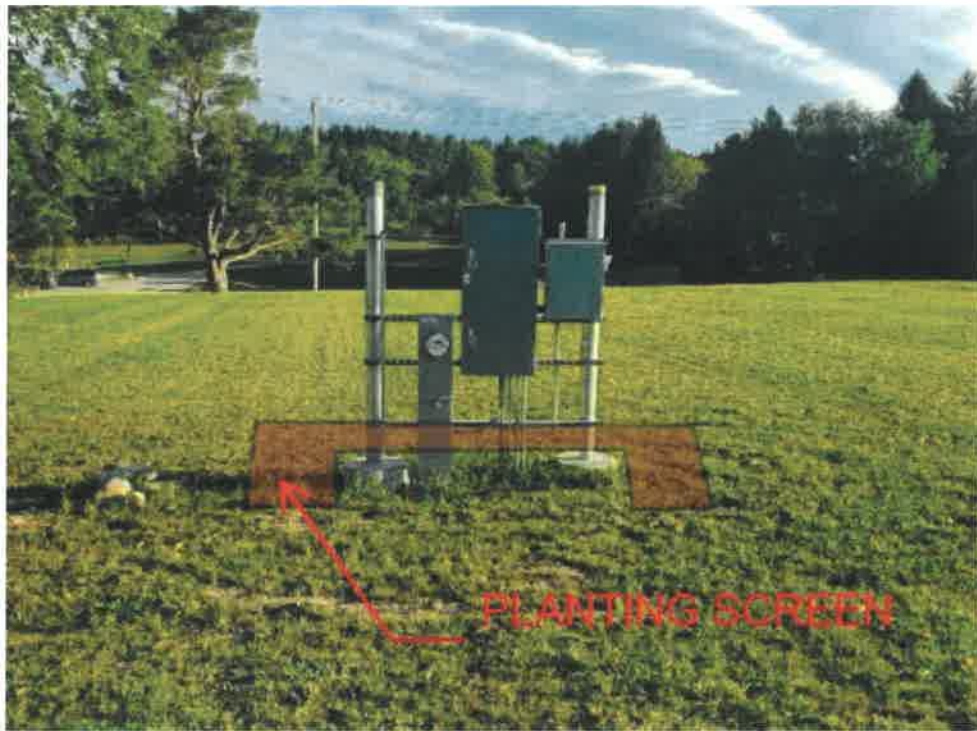
The repairs have been completed on the pool deck. Lippert Flooring feels there are still some other underlying issues causing the tile to come loose. CD Smith has been contacted to discuss how to move forward to resolve the issue.

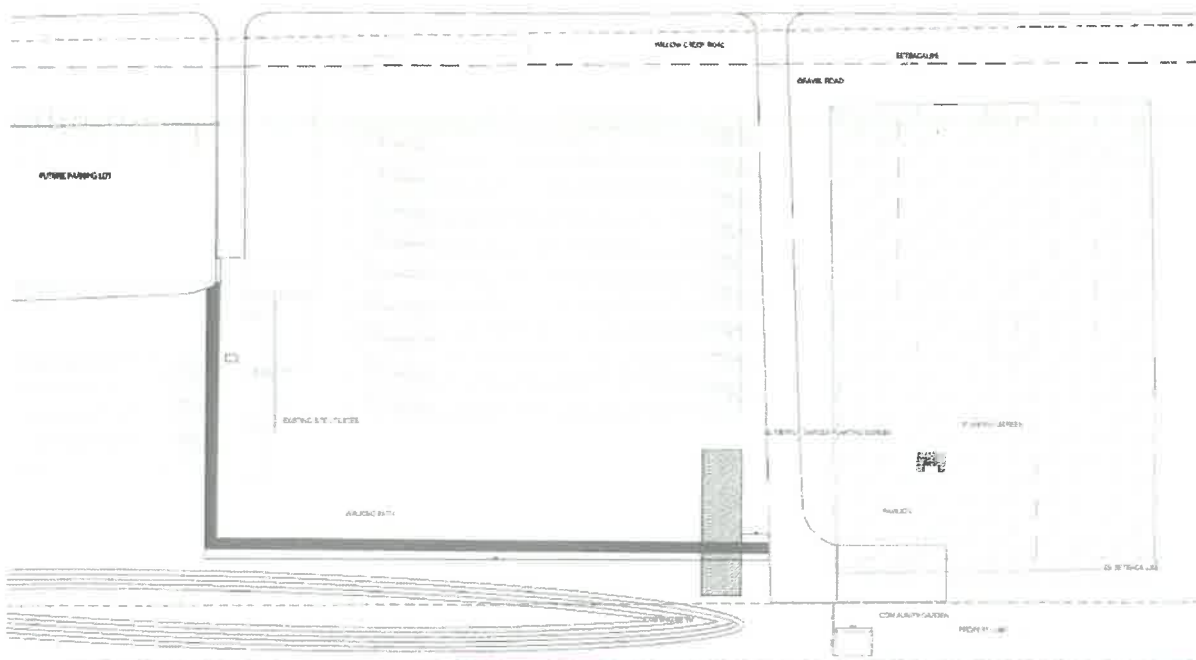
Amy Belle

Nature Center

Amy Belle principal, Ms. Kohel, is working with David J. Frank Landscaping on a plan for the Nature Center. This is phase 1 which includes a walking path from the future overflow parking lot to the center, a butterfly garden, community garden and plant screenings.







David J. Frank
Landscape Construction, Inc.
P.O. Box 1000
Birmingham, AL 35202
205.944.4444
www.djfrank.com

AMY BELLE
Landscape
2000 1st Ave. N.
Birmingham, AL 35202

REVISED
1.10.10

SECTION



SCALE
1" = 10'
DATE
10.1.10
SHEET
#1

LANDSCAPE
PLAN

L1.0



Images are for informational purposes only and do not represent the final design. The final design is subject to change without notice. The final design is the property of David J. Frank Landscape Construction, Inc. and shall remain confidential.

The Best Support for Pollinators

Pollinators are essential to life. They allow plants to reproduce, including a large percentage of our food crops. Yet pollinator populations are declining significantly, worldwide. Habitat loss, fragmentation, and the widespread use of pesticides threaten the health and population of insects, birds and bats. Native plants have a crucial role to play in supporting pollinators and reversing some of these damaging trends.

Different Plants for Different Pollinators

The best way to attract and support pollinators is with a variety of flowering native plants that offer nectar and pollen throughout the growing season. Pollinators are attracted to blooms that fit their physiological traits; specifically, the length of their tongue. Planting a variety of floral shapes will support a more diverse array of pollinators. Some bees are generalists, flitting among flowers to drink nectar and collect pollen from many different plants. Flat or shallow blossoms, such as asters or coreopsis, attract a variety of bee species, while flowers that have tube-shaped nectaries, such as Monarda or Liatris, will attract long-tongued pollinators, like butterflies and bumble bees.

Flowers that bloom in early spring provide food for newly emerging bumble bee queens, while fall blooms favor pollinators that are actively seeking the additional energy needed for overwintering. Also, a planting that groups of three or more of a single species will attract bees because the cluster allows them to forage more efficiently.

Seven Steps to a Pollinator-Friendly Yard

1. **Plant Natives!** Native pollinators are adapted to native plants in both their behaviors and in their physical traits, and the plants need them as well.

2. **Seasonal Diversity.** Grow a variety of plants that will bloom across the season – early spring thru fall – so that pollen and nectar are always available. Varied bloom shapes and color will attract a wider variety of pollinators.
3. **Avoid using pesticides.** Pesticides may be absorbed by the plant tissue and become present in all parts of the plant, including the nectar and pollen. Bees, butterflies, and other flower-hopping insects are harmed by the residues.
4. **Avoid modern cultivars or hybrids,** especially the “double-blooms” which can be changed in scent or shape just enough that pollinators can’t recognize them or access the nectar. Studies show that altered foliage color is also a deterrent.
5. **Include host plants** to attract more butterflies and moths. Many lepidoptera are very selective when it comes to where they lay their eggs.
6. **Provide a source of water** such as a shallow birdbath with stones in it, or some bare ground that is kept moist. Bees and butterflies need water, and they seek shallow water sources.
7. **Create and protect nesting opportunities for native bees.** Bumble bees construct nests in cavities, using either existing underground cavities, or cavities under spent or fallen plant material. Wood-nesting bees build their nests inside hollow tunnels in dead treelimbs and hollow plant stems. Ground nesting native bees need direct access to the soil surface, often on sloped or well-drained sites.

Butterflies & Host Plants



Monarch



Butterflyweed



Common Milkweed

Host Plants: Any plant of the *Asclepias* genus, including Red Milkweed, Common Milkweed, Showy Milkweed, Sullivant's Milkweed, Butterflyweed



American Lady, Painted Lady



Ironweed

Host Plants: Pussytoes, Ironweed, Pearly Everlasting, Rose Mallow, Thistles, Burdock,



Fritillaries

Host Plants: Various violets, Bird's Foot Violet



Labrador Violet



Black Swallowtail

Host Plants: Members of the parsley family (Apiaceae) including Golden Alexanders



Golden Alexanders



Pearl Crescent, Tawny Crescent

Smooth Aster

Host Plants: Smooth Aster, Frost Aster and other asters.



Karner Blue, Melissa Blue

Lupine

Host Plants: Lupine



Baltimore Checkerspot
Host Plants: White Turtlehead



White Turtlehead



Frosted Elfin
Host Plants: Lupine, Blue False Indigo



Blue False Indigo



Mottled Duskywing,
Host Plants: New Jersey Tea



New Jersey Tea

Other Butterflies Friendly Plants



Pale Purple Coneflower



Cardinal Flower



Prairie Blazingstar



Joe Pye Weed



Stiff Goldenrod



PRAIRIE NURSERY

Important Native Plants for Pollinators Arranged by Bloom Season

SPRING		BUMBLE BEES	RUSTY PATCHED BUMBLE BEE	SOLITARY BEES*	HUMMINGBIRDS	BUTTERFLIES **	HOST PLANT***
<i>Cornus sericea</i>	Red Twig Dogwood			●			●
<i>Geranium maculatum</i>	Wild Geranium	●	●	●			
<i>Lupinus perennis</i>	Lupine	●	●	●	●	●	●
<i>Mertensia virginica</i>	Virginia Bluebells	●			●		
<i>Polemonium reptans</i>	Jacob's Ladder	●		●			
<i>Prunus virginiana</i>	Chokecherry	●	●	●			●
<i>Salix discolor</i>	Pussy Willow	●	●	●			●
<i>Uvularia grandiflora</i>	Bellwort			●			

EARLY SUMMER

<i>Amorpha canescens</i>	Leadplant	●	●	●		●	●
<i>Anemone canadensis</i>	Canada Anemone			●			
<i>Aquilegia canadensis</i>	Columbine	●		●	●		●
<i>Aronia melanocarpa</i>	Black Chokeberry	●		●			
<i>Asclepias exaltata</i>	Poke Milkweed	●	●	●		●	●
<i>Asclepias syriaca</i>	Common Milkweed	●	●	●	●	●	●
<i>Baptisia australis</i>	Blue False Indigo	●		●	●		●
<i>Baptisia bracteata</i>	Cream False Indigo	●	●	●		●	●
<i>Baptisia lactea</i>	White False Indigo	●	●	●			●
<i>Ceanothus americanus</i>	New Jersey Tea	●	●	●	●	●	●
<i>Coreopsis lanceolata</i>	Lanceleaf Coreopsis	●		●		●	
<i>Diervilla lonicera</i>	Bush Honeysuckle	●	●	●			●
<i>Echinacea pallida</i>	Pale Purple Coneflower	●	●	●		●	
<i>Echinacea paradoxa</i>	Ozark Coneflower	●	●	●		●	
<i>Iris</i> spp.	Wild. Blue Flag	●		●	●	●	
<i>Penstemon digitalis</i>	Smooth Penstemon	●	●	●	●	●	●
<i>Penstemon grandiflorus</i>	Beardtongue	●	●	●	●	●	●
<i>Phlox pilosa</i>	Downy Phlox				●	●	
<i>Physocarpus opulifolius</i>	Common Ninebark			●		●	●
<i>Rhus glabra</i>	Smooth Sumac	●		●			●
<i>Rosa</i> spp.	Meadow, Carolina	●	●	●			●
<i>Rubus parviflorus</i>	Thimbleberry	●		●			●
<i>Sambucus canadensis</i>	Common Elderberry	●		●			●
<i>Silene virginica</i>	Fire Pink				●		
<i>Smilacina racemosa</i>	Solomon's Plume			●			
<i>Tradescantia bracteata</i>	Prairie Spiderwort	●		●			
<i>Tradescantia ohiensis</i>	Ohio Spiderwort	●		●			
<i>Viburnum</i> spp.	Viburnums			●			●
<i>Zizia aurea</i>	Golden Alexanders	●		●			●

MIDSUMMER

<i>Asclepias incarnata</i>	Red Milkweed	●	●	●	●	●	●
<i>Asclepias speciosa</i>	Showy Milkweed	●	●	●	●	●	●
<i>Asclepias sullivantii</i>	Sullivant's Milkweed	●	●	●	●	●	●
<i>Asclepias tuberosa</i>	Butterflyweed	●	●	●	●	●	●
<i>Coreopsis palmata</i>	Stiff Coreopsis	●		●		●	
<i>Dalea candida</i>	White Prairie Clover	●	●	●			●
<i>Dalea purpurea</i>	Purple Prairie Clover	●	●	●			●
<i>Echinacea purpurea</i>	Purple Coneflower	●	●	●	●	●	
<i>Eryngium yuccifolium</i>	Rattlesnake Master	●		●		●	
<i>Heliopsis helianthoides</i>	Ox Eye Sunflower	●				●	●
<i>Liatris ligulistylis</i>	Meadow Blazingstar	●	●	●	●	●	
<i>Liatris pycnostachya</i>	Prairie Blazingstar	●	●	●	●	●	
<i>Liatris spicata</i>	Dense Blazingstar	●	●	●	●	●	
<i>Monarda didyma</i>	Red Beebalm	●			●		
<i>Monarda punctata</i>	Dotted Mint	●		●		●	●
<i>Monarda fistulosa</i>	Bergamot	●	●	●	●	●	●
<i>Parthenium integrifolium</i>	Wild Quinine	●		●			
<i>Phlox glaberrima</i>	Marsh Phlox				●	●	
<i>Pycnanthemum virginianum</i>	Mountain Mint	●	●	●			
<i>Rosa setigera</i>	Climbing Prairie Rose	●	●	●			●
<i>Rudbeckia fulgida</i>	Orange Coneflower	●		●		●	●
<i>Rudbeckia hirta</i>	Black Eyed Susan	●		●		●	●
<i>Ruellia humilis</i>	Wild Petunia			●	●		●
<i>Silene regia</i>	Royal Catchfly				●		
<i>Silphium laciniatum</i>	Compassplant	●		●		●	
<i>Symphoricarpos albus</i>	White Snowberry	●		●			●
<i>Veronicastrum virginicum</i>	Culver's Root	●	●	●		●	●

LATE SUMMER to EARLY FALL

<i>Agastache foeniculum</i>	Lavender Hyssop	●	●	●	●	●	●
<i>Allium stellatum</i>	Prairie Onion	●		●			
<i>Asclepias verticillata</i>	Whorled Milkweed	●	●	●		●	●
<i>Cassia hebecarpa</i>	Wild Senna	●		●			●
<i>Chelone glabra</i>	White Turtlehead	●					●
<i>Eupatorium</i> spp.	Joe Pye Weeds, Boneset	●	●	●		●	●
<i>Eupatorium purpureum</i>	Sweet Joe Pye Weed	●	●	●		●	●
<i>Gentiana andrewsii</i>	Bottle Gentian	●	●				
<i>Helianthus occidentalis</i>	Western Sunflower	●				●	●
<i>Helianthus divaricatus</i>	Woodland Sunflower	●				●	●
<i>Hibiscus laevis</i>	Rose Mallow	●		●	●		●
<i>Liatris aspera</i>	Rough Blazingstar	●	●	●	●	●	
<i>Lobelia cardinalis</i>	Cardinal Flower				●	●	●
<i>Lobelia siphilitica</i>	Great Blue Lobelia	●		●	●	●	●
<i>Physostegia virginiana</i>	Obedient Plant	●		●	●	●	
<i>Ratibida pinnata</i>	Yellow Coneflower	●		●			
<i>Rudbeckia subtomentosa</i>	Sweet Black Eyed Susan	●		●		●	●
<i>Rudbeckia triloba</i>	Brown Eyed Susan	●		●		●	●
<i>Salvia azurea</i>	Blue Sage	●		●	●		
<i>Silphium perfoliatum</i>	Cupplant	●		●	●	●	
<i>Spiraea tomentosa</i>	Steeplebush	●	●				●
<i>Verbena stricta</i>	Hoary Vervain	●		●	●	●	●
<i>Vernonia fasciculata</i>	Ironweed	●		●		●	●

FALL

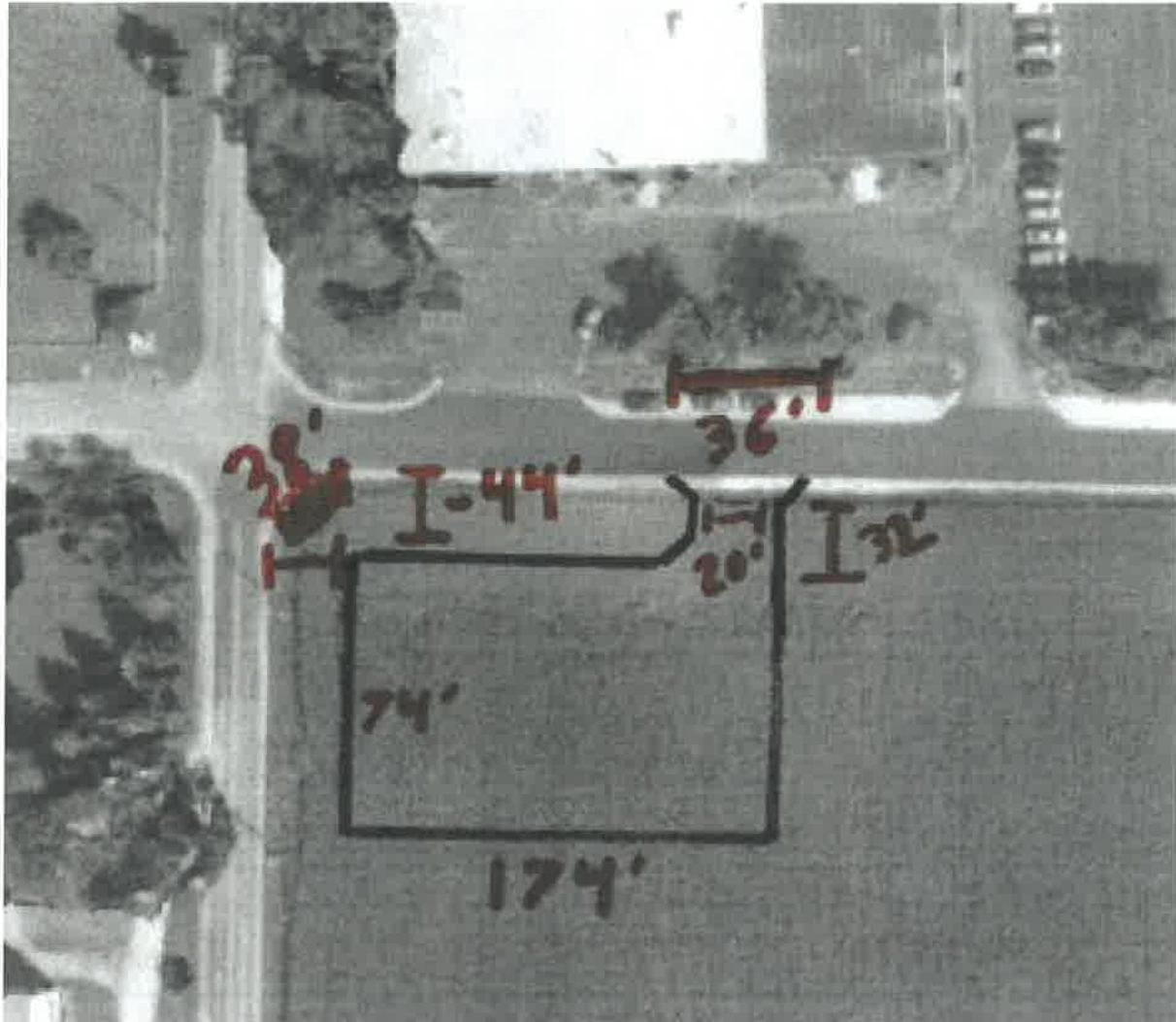
<i>Aster azureus</i>	Sky Blue Aster	●		●		●	●
<i>Aster cordifolius</i>	Heart Leaved Aster	●		●			●
<i>Aster divaricatus</i>	White Woodland Aster	●		●			●
<i>Aster ericoides</i>	Heath Aster	●		●		●	●
<i>Aster laevis</i>	Smooth Aster	●		●		●	●
<i>Aster novae-angliae</i>	New England Aster	●	●	●		●	●
<i>Solidago caesia</i>	Blue Stemmed Goldenrod	●	●	●			
<i>Solidago odora</i>	Anise Scented Goldenrod	●	●	●		●	
<i>Solidago ohioensis</i>	Ohio Goldenrod	●	●	●		●	●
<i>Solidago rigida</i>	Stiff Goldenrod	●	●	●		●	●
<i>Solidago speciosa</i>	Showy Goldenrod	●	●	●		●	

* SOLITARY BEES: includes mining bees, sweat bees, mason bees, leaf-cutter bees and others.

** BUTTERFLIES: a to preferred nectar sources for a variety of butterflies and moths.

*** HOST PLANT: a plant, or a genus of plants, upon which certain butterflies or moths will deposit their eggs. The larvae (caterpillars) feed upon the host plants to complete their life cycle.

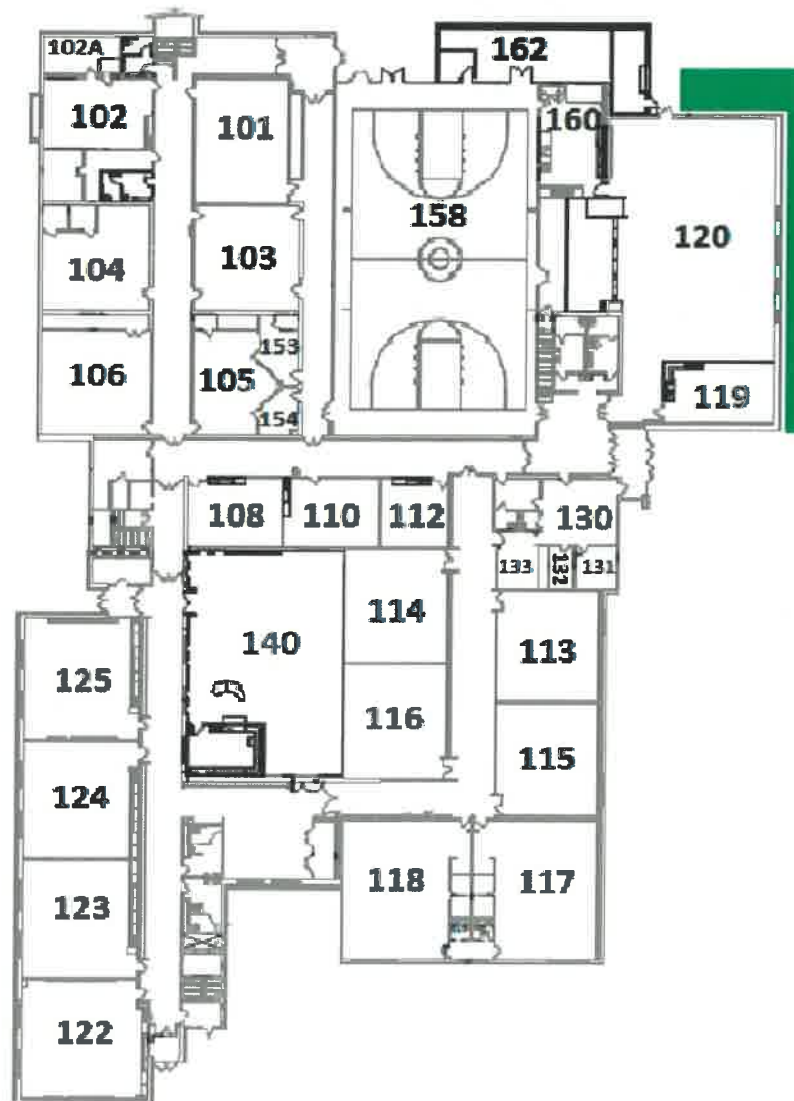
The Village of Richfield asked for a rough sketch of the proposed area for the overflow parking lot at Amy Belle with the dimensions to determine if any water retention would be needed. The below sketch has been provided to the Village of Richfield. The District will be informed of any requirements needed to complete the lot.



Rockfield

Sign and Plantings

Rockfield P.T.A. is planting some bushes and flowers in the bedding at the front of the building and on the north side in the highlighted areas. They also would like to put in a school sign, more details on the sign will be brought forward if the P.T.A. decides to proceed with it.



GERMANTOWN SCHOOL DISTRICT

TO:	Building Committee	TOPIC: Fund 41 Capital Projects List
FROM:	Brittany Altendorf	BUILDING COMMITTEE MEETING: October 12, 2020
DATE:	October 8, 2020	AGENDA ITEM: VI. A.

ATTACHMENTS: Prioritized Capital Projects List from Don Erickson, Director of Buildings & Grounds

RECOMMENDATION: Recommendation to continue to delay any approval or decisions on the Fund 41 Capital Projects priority list and fund budget until the November 9, 2020 Building Committee meeting.

District Project List

Below is the suggested project list. This list will be prioritized on the 5 year plan.

- 1) Roofing \$250,000
- 2) Germantown High School Replace 4 Stair Well Fire Doors and frames. Estimate \$44,656. \$9,164 doors and hardware with a \$2,000 for mag hold open install each opening
- 3) Safety/Lockdown Warning System Loud Areas (Flashing Light?) District Wide \$40,000 WIP
- 4) GHS JV Field Fencing \$19,000 (2019 Quote)
- 5) Bollards Mac Main Entrance & Rock Main Entrance \$17,000
- 6) Germantown High School Track Resurface \$114,625
- 7) GHS Door Replacement Lower B-wing 13 Doors \$150,000
- 8) Sidewalk Repair /Replacement GHS
- 9) District Asphalt Repairs (Playgrounds) MacArthur \$36,162 , Rockfield \$25,428 and County Line \$75,852
- 10) GHS Sprinkler System Practice Fields
- 11) Administration A.C. \$56,000 Does Not Include Board Room Unit
- 12) County Line Air Conditioning New AHU Unit Music Room \$50,000
- 13) Additional Cameras at Elementary Schools
- 14) GHS Soccer Field
- 15) KMS Outbuildings – New Siding \$10,000
- 16) Pella Window Replacements to Store Front Windows \$20,000
- 17) County Line Vestibule Door 10 \$7,000
- 18) Kennedy Middle Dugouts \$38,864
- 19) Amy Belle Overflow Parking Lot \$60,000
- 20) Kennedy Middle Track \$150,000
- 21) Administration HAVC Control Upgrade \$52,000
- 22) KMS Blue Gym Floor Replacement to Match Elementary Gyms \$120,000
- 23) Continue Kennedy Middle School LED Lighting Upgrade \$10,000 each year until complete
- 24) Kennedy Middle School G-wing VAV replacement
- 25) Continued Flooring Replacement \$10,000
- 26) County Line Tuck-pointing \$36,335
- 27) Germantown High School Hall LED Light Upgrade \$24,798
- 28) H.V.A.C U.V. Lights \$10,000 yearly until complete
- 29) GHS Stadium Lights LED
- 30) GHS Student Parking Lot Asphalt
- 31) GHS Bus Lane Asphalt \$100,000
- 32) GHS 2002 Digital Controls Update A-wing Classrooms
- 33) KMS stage Curtains Fire Proof
- 34) Future Boiler Replacement
- 35) Baseball/Softball field renovations
- 36) Outbuilding Painting (3 Year Rotation)
- 37) Playground Wood Chips Spring and Fall
- 38) GHS Doors Entrance 14 Replacement \$25,000
- 39) Asphalt Seal Coating 5 Year Rotation Starting Spring 2022

- A) GHS Spring 2022 (2021/22 Budget)
 - B) GHS Summer 2022 (2022/23 Budget)
 - C) KMS/Admin/Warehouse Summer 2023 (2023/24 Budget)
 - D) County Line/Rock Summer 2024 (2024/25 Budget)
 - E) MacArthur/Amy Belle Summer 2025 (2025/26 Budget)
- 40) Concrete Slabs Soccer Shelters \$7,000
 - 41) Concrete Slabs Tennis Court Bleachers \$7,011
 - 42) Concrete Slabs Baseball JV Bleachers \$6,300
 - 43) Bleachers Baseball JV \$30,000
 - 44) Grounds Utility Vehicle \$35,000
 - 45) Replace Supply Water Piping to Football Concessions
 - 46) Hookup Administration Building City Water \$24,000

District

5 Year Plan

Below is a draft of what the 5 year plan will look like. It will be based off the District project list. The plan is an Excel spread sheet so it can be adjusted each year.

5 Year Plan

	2021/2022	
Building	Project Description	Estimated Cost
District Roofing	GHS Sections Z, CC,DD	\$175,000
Amy Belle	Repair Wall Elevation	\$25,000
County Line	Courtyard Wall Restore	\$25,000
GHS	Fire Door Replacement	\$12,000
GHS	LED Lights (Halls)	\$10,000
GHS	Track Resurface	\$114,800
County Line	Tuck-pointing	\$20,000
GHS	HVAC UV lighting	\$15,000
Amy Belle	Overflow Parking	\$60,000
Administration	Digital Controls HVAC	\$14,000
GHS	Fire Doors	\$12,500
County Line	Tuck pointing	\$18,000
	Total	\$501,300

	2022/2023	
Building	Project Description	Estimated Cost
District Roofing	KMS Section P	\$175,000
District Roofing	MacArthur Section C	\$35,000
GHS	Fire Door Replacement	\$12,000
GHS	LED Lights (Halls)	\$15,000
County Line	Tuck-pointing	\$20,000
Administration	Replace DX units	\$100,000
Administration	Digital Controls HVAC	\$14,000
GHS	JV Baseball Field Fencing	\$20,000
Mac & Rockfield	Bollards	\$17,000
Rockfield	Playground Asphalt Overlay	\$25,500
MacArthur	Playground Asphalt Overlay	\$36,200
County Line	Tuck pointing	\$20,000
GHS	HVAC UV lighting	\$15,000
Amy Belle	Overflow Parking Lot	\$60,000
	Total	\$564,700

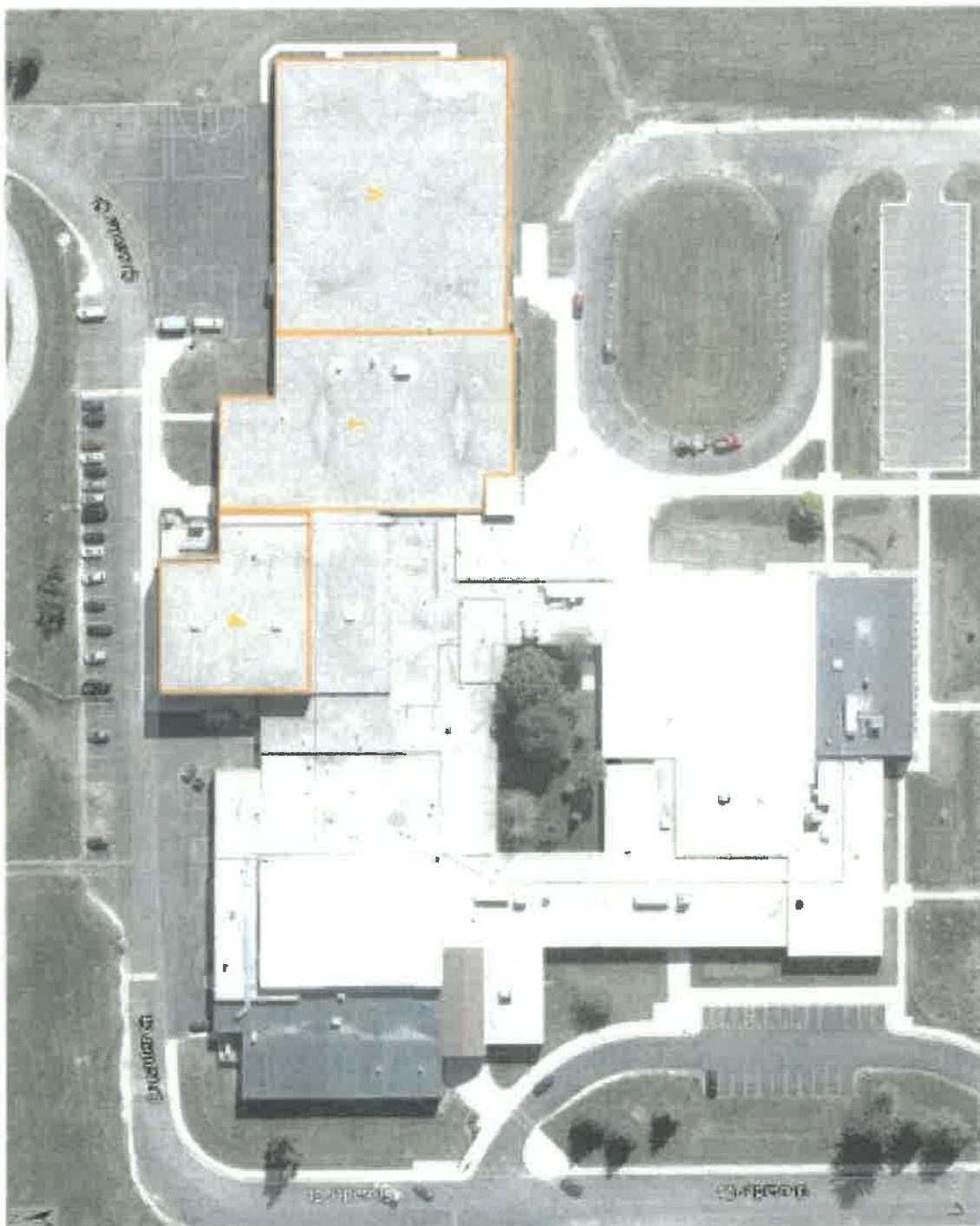
	2023/2024	
Building	Project Description	Estimated Cost
District Roofing	KMS Section T	\$300,000
GHS	Fire Door Replacement	\$12,500
KMS	LED Lights (Halls)	\$10,000
Administration	Digital Controls HVAC	\$14,000
GHS	Bus Lane Asphalt	\$100,000
District	Safety/Lockdown Warning System	\$20,000
County Line	Playground Asphalt Overlay	\$76,000
GHS	HVAC UV lighting	\$15,000
	Total	\$547,500

	2024/2025	
Building	Project Description	Estimated Cost
District Roofing	KMS Section V	\$390,000
GHS	Fire Door Replacement	\$12,500
KMS	LED Lights (Halls)	\$10,000
Administration	Digital Controls HVAC	\$14,000
District	Safety/Lockdown Warning System	\$20,000
GHS	Replace Doors Entrance 14	\$25,000
GHS	Grounds Utility Vehicle	\$35,000
GHS	HVAC UV lighting	\$15,000
	Total	\$521,500

	2025/2026	
Building	Project Discription	Estimated Cost
District Roofing	KMS Section D	\$200,000
GHS	Fire Door Replacement	\$12,500
GHS	Concessions Water Line Replacement	\$40,000
GHS	LED Lights Classrooms	
KMS	VAV Replacement G-wing	\$100,000
	Total	\$352,500

Client: GERMANTOWN SCHOOL DISTRICT Yearly Budget Summary

Facility	Asset	Recommendation	Square Feet	Action Year	Budget Amount
Year: 2021					
High School	Roof Area(s) Z, CC, DD	Replace	11,459	2021	\$175,000
Amy Belle	Wall Elevations	Repair	-	2021	\$25,000
County Line	Courtyard Wall	Restore	-	2021	\$25,000
					\$225,000
Year: 2022					
Kennedy Middle	Roof Area P	Replace	11,568	2022	\$175,000
MacArthur	Roof Area C	Replace	1,520	2022	\$35,000
					\$210,000
Year: 2023					
Kennedy Middle	Roof Area T	Replace	20,093	2023	\$300,000
			20,093		\$300,000
Year: 2024					
Kennedy Middle	Roof Area V	Replace	26,151	2024	\$ 390,000
			26,151		\$ 390,000
Year: 2025					
Kennedy Middle	Roof Area D	Replace	11,416	2025	\$ 200,000
					\$ 200,000

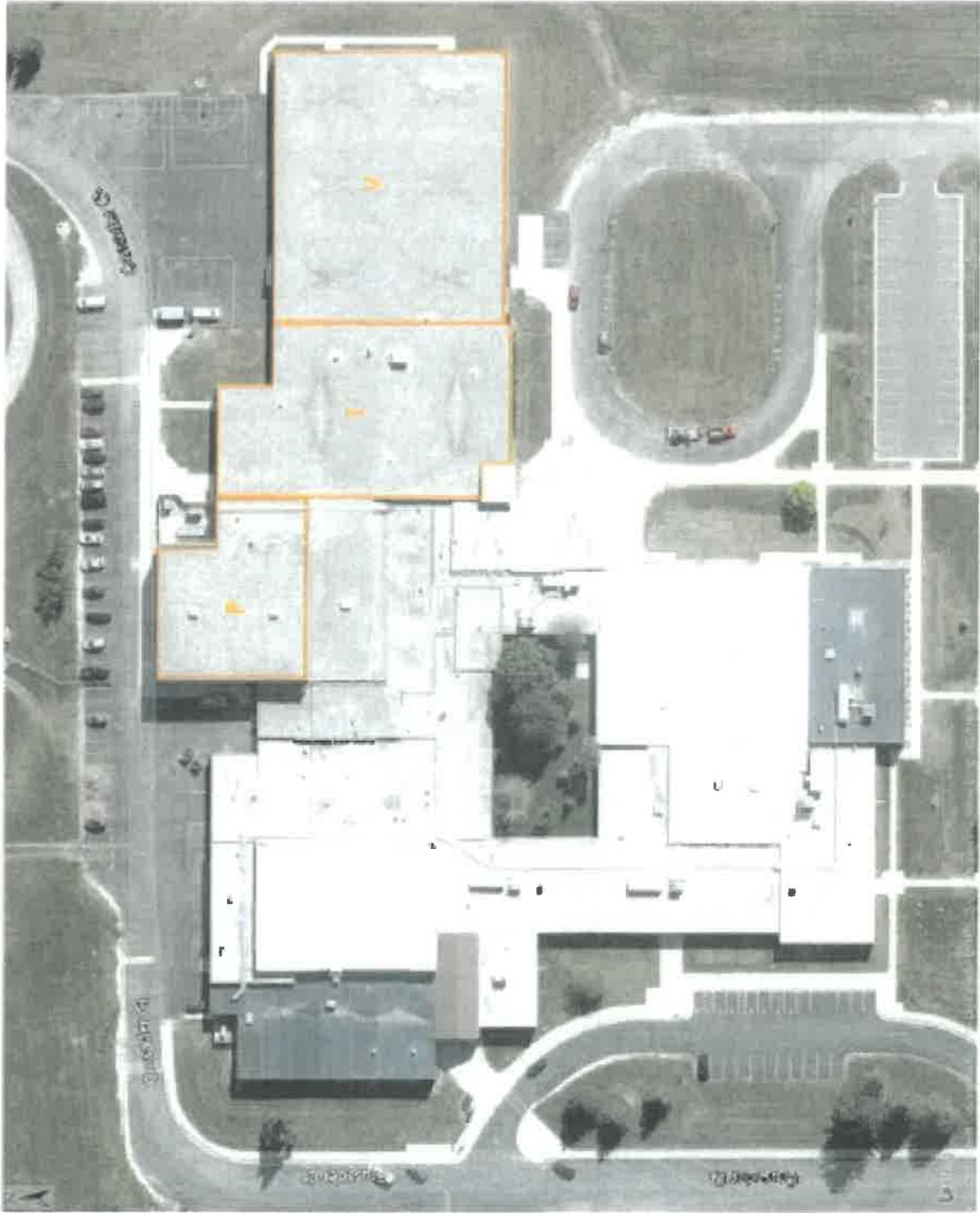


CENNEDY MOBILE SCHOOL
 1713 N 1136 CRYSTAL DR
 CRYSTAL LAKE, IL 60012

RESEARCH

REMARKS BALLASTED PCW
P 1155Z 30444 - 101
+ 220030444 0000
+ 217510444 0000

10/1/2007



15501-0000-0000

PROJECT
KENNEDY MIDDLE SCHOOL
W 8011 B36 CRUSADER CD
GERMANTOWN, VI 22092

CONTRACTOR

INSPECTION NOTES
REMAINING BALASTED PAVING
P 11,549 SQUARE FEET
T 25,093 SQUARE FEET
W 29,131 SQUARE FEET

INFORMATION
DATE: 10/1/2019
TIME: 10:00 AM
LOCATION: 15501-0000-0000
BY: [Signature]
SHEET: 1



McLure
KENNEDY WIDE SCHOOL
1760 W 16th A CALUMET CO
GRAND OAK, W. ILL 60142

CONTRACTOR

THESE

REMARKS: 50 SQUARE FEET
2003 SQUARE FEET
24:41 SQUARE FEET

NIGUY MEDIN

1111

Abstract

of

1999