

Arcola High School
Arcola CUSD 306
Arcola, ILLINOIS



ILLINOIS
SCHOOL
REPORT
CARD

GRADES : 7 8 9 10 11 12

State and federal laws require public school districts to release report cards to the public each year.

This year, we have updated the report card to provide a full picture of school performance beyond just test scores. A display of this data designed with parents and communities in mind is available on illinoisreportcard.com. All of the metrics posted on illinoisreportcard.com are also included in this report.

STUDENTS

RACIAL/ETHNIC BACKGROUND AND OTHER INFORMATION														
	White	Black	Hispanic	Asian	Native Hawaiian /Pacific Islander	American Indian	Two or More Races	Percent Low-Income	Percent Limited-English-Proficient	Percent IEP	Percent Homeless	Chronic Truancy Rate	Attendance Rate	Total Enrollment
School	56.9	0.3	41.9	0.6	0.0	0.0	0.3	37.3	5.5	13.6	1.7	2.9	94.4	346
District	54.4	0.4	43.3	0.5	0.0	0.0	1.4	41.1	12.9	15.2	4.2	2.7	94.7	735
State	48.5	17.0	25.7	4.9	0.1	0.4	3.4	50.5	10.7	13.9	2.1	10.8	94.0	2,028,162

Low-income students come from families receiving public aid; live in institutions for neglected or delinquent children; are supported in foster homes with public funds; or are eligible to receive free or reduced-price lunches. IEP Students are those students eligible to receive special education services.

Limited-English-proficient students are those students eligible for transitional bilingual programs. **Total Enrollment** is based on Serving School. **Homeless** students are who do not have permanent and adequate homes. **Chronic truants** are students who are absent from school without valid cause for 9 or more of the last 180 school days.

STUDENT MOBILITY RATE														
	All	Male	Female	White	Black	Hispanic	Asian	Native Hawaiian /Pacific Islander	American Indian	Two or More Races	Percent Limited-English-Proficient	Percent IEP	Percent Low-Income	
School	3.7	2.7	4.7	1.5		6.5					17.4	6.4	8.0	
District	5.5	5.2	5.8	3.2		7.0					13.9	9.0	10.6	
State	6.9	7.3	6.5	4.5	13.4	6.8	6.8	8.1	7.5	8.0	9.3	10.1	9.6	

INSTRUCTIONAL SETTING

PARENTAL CONTACT*	
	Percent
School	100.0
District	100.0
State	94.9

TOTAL SCHOOL DAYS	
	Days
School	175
District	175
State	175

8TH GRADERS PASSING ALGEBRA I **	
	Percent
School	17.6
District	17.6
State	29.1

** For the 8th graders passing algebra I, if the percentage is 0, it means that an Algebra I course is not offered.

* Parental contact includes parent-teacher conferences, parental visits to school, school visits to home, telephone conversations, and written correspondence.

STUDENT-TO-STAFF RATIOS			
Pupil-Teacher Elementary	Pupil-Teacher Secondary	Pupil-Certified Staff	Pupil-Administrator
--	--	--	--
17.0	10.1	8.4	183.8
18.7	19.5	11.2	189.6

HEALTH AND WELLNESS (days per week)	
	Days
School	5.0
District	5.0
State	3.9

AVERAGE CLASS SIZE (as of the first school day in May)											
Grades	K	1	2	3	4	5	6	7	8	9 - 12	Overall
School								18.3	23.0	16.2	18.1
District								18.3	23.0	16.2	17.5
State								20.5	20.6	19.5	20.2

TIME DEVOTED TO TEACHING CORE SUBJECTS (Minutes Per Day)												
Grades	Mathematics			Science			English/Language Arts			Social Science		
	3	6	8	3	6	8	3	6	8	3	6	8
School			45			45			90			45
District			45			45			90			45
State			56			50			77			49

TEACHER INFORMATION (Full-Time Equivalents)											
	White	Black	Hispanic	Asian	Native Hawaiian/ Pacific islander	American Indian	Two or More Races	Unknown	Male	Female	Total Number
	District	93.1	0.0	5.2	0.0	0.0	0.0	0.0	1.7	17.2	82.8
State	83.3	5.9	5.7	1.5	0.1	0.2	0.8	2.6	23.2	76.8	127,310

TEACHER INFORMATION (Continued)			
	Average Teaching Experience (Years)	% of Teachers with Bachelor's Degrees	% of Teachers with Master's & Above
School	--	--	--
District	9.6	77.5	22.5
State	12.8	38.4	61.2

Poverty (low-income) is defined on page 1 of all report cards. High- and low-poverty schools include those in the top and bottom quarters of the poverty distribution of schools in the state.

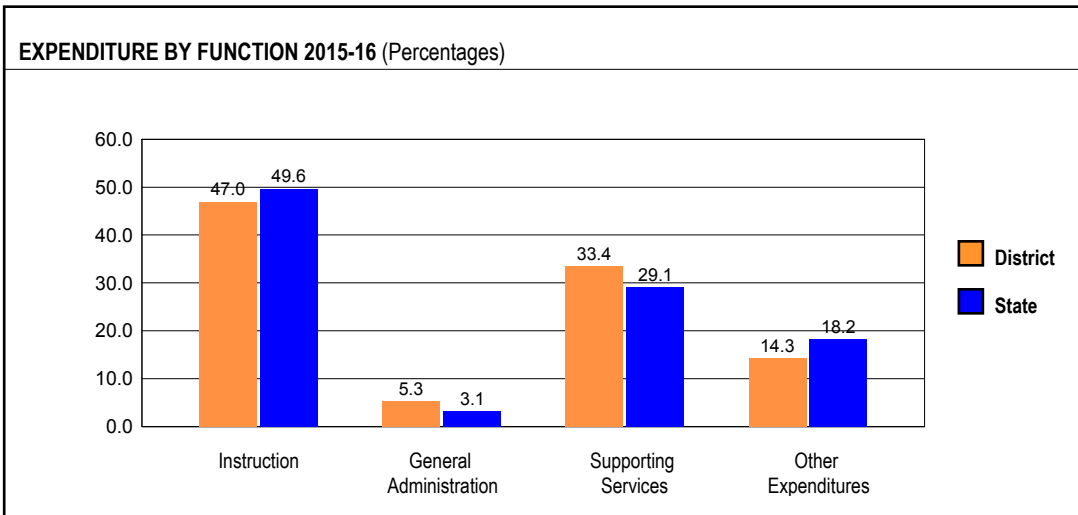
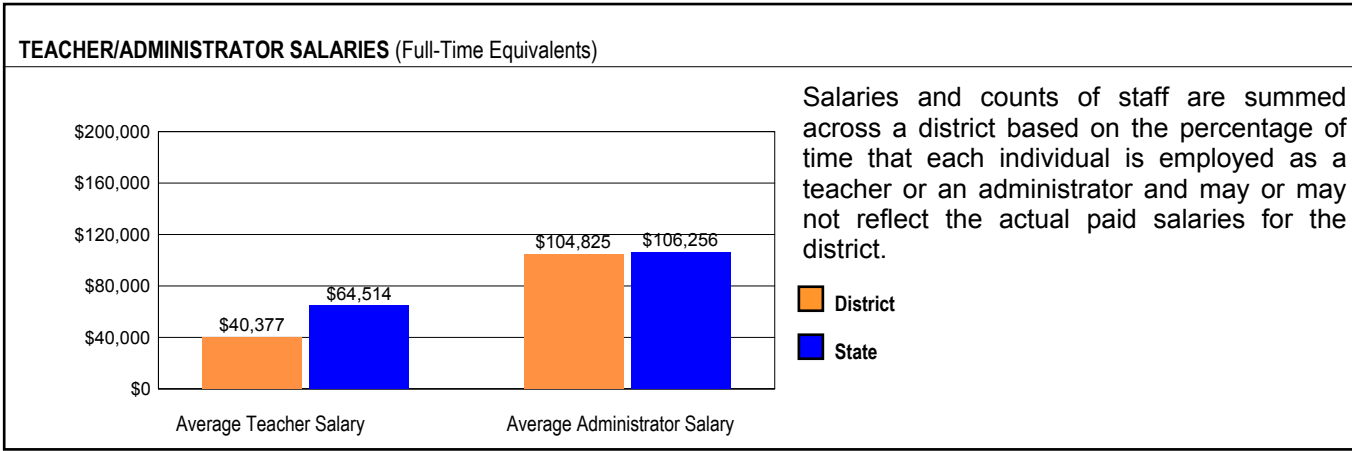
Some teacher/administrator data are not collected at the school level.

TEACHER RETENTION RATE	
School	76.1
District	80.1
State	86.3

PRINCIPAL TURNOVER (Count)	
School	3.0
District	2.0
State	2.0

TEACHER ATTENDANCE	
School	71.4
District	75.9
State	75.3

SCHOOL DISTRICT FINANCES



REVENUE BY SOURCE 2015-16

	District	District %	State %
Local Property Taxes	\$1,722,968	24.4	63.2
Other Local Funding	\$1,478,370	21.0	4.8
General State Aid	\$2,572,985	36.5	17.1
Other State Funding	\$785,599	11.1	7.1
Federal Funding	\$492,325	7.0	7.8
TOTAL	\$7,052,247		

EXPENDITURE BY FUND 2015-16

	District	District %	State %
Education	\$5,479,542	68.3	73.4
Operations & Maintenance	\$701,323	8.7	6.2
Transportation	\$425,036	5.3	3.8
Debt Service	\$590,186	7.4	8.2
Tort	\$218,335	2.7	1.2
Municipal Retirement/ Social Security	\$203,274	2.5	2.1
Fire Prevention & Safety	\$2,617	0.0	0.5
Capital Projects	\$405,429	5.1	4.6
TOTAL	\$8,025,742		

OTHER FINANCIAL INDICATORS

	2014 Equalized Assessed Valuation per Pupil	2014 Total School Tax Rate per \$100	2015-16 Instructional Expenditure per Pupil	2015-16 Operating Expenditure per Pupil
District	\$70,295,697	4.59	\$5,559	\$9,709
State	**	**	\$7,853	\$12,973

** Due to the way Illinois school districts are configured, state averages for equalized assessed valuation per pupil and total school tax rate per \$100 are not provided.

Equalized assessed valuation includes all computed property values upon which a district's local tax rate is calculated.

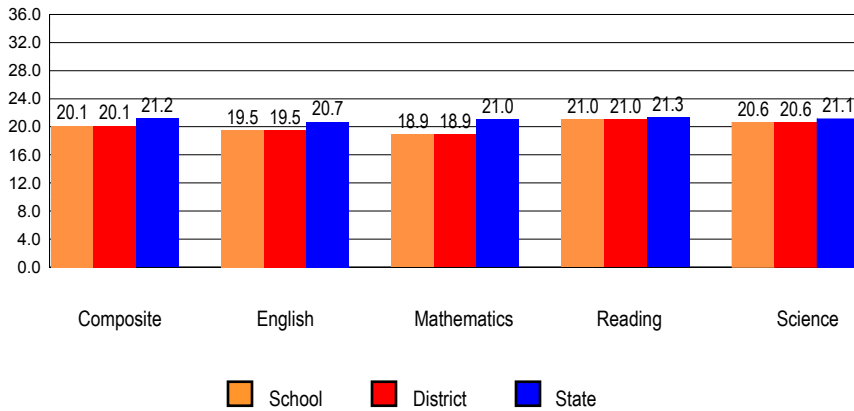
Total school tax rate is a district's total tax rate as it appears on local property tax bills.

Instructional expenditure per pupil includes the direct costs of teaching pupils or the interaction between teachers and pupils.

Operating expenditure per pupil includes the gross operating cost of a school district excluding summer school, adult education, bond principal retired, and capital expenditures.

ACADEMIC PERFORMANCE

ACT ASSESSMENT: GRADUATING CLASS OF 2017 *



ACT is no longer the state assessment. College and career readiness will be redefined next year due to ESSA. As a result, the college and career readiness measure for the 2016-17 Report Card has not been changed for consistency. All 11th grade students take the SAT as the high school accountability assessment beginning with the 2016-17 school year. However, the College Course Work Readiness data point on the Illinois Report Card reports on the graduating class of the reporting year. Since the graduating class of 2017 (12th grade students in the 2016-17 school year) took the ACT and not the SAT, ISBE is using ACT scores for the 2017 College Course Work Readiness data point.

READY FOR COLLEGE COURSE WORK

School	50.0
District	50.0
State	50.5

PERCENT OF STUDENTS MET ACT BENCHMARKS

	English	Math	Read	Science	ALL 4 Subjects
School	72.2	27.8	58.3	36.1	22.2
District	72.2	27.8	58.3	36.1	22.2
State	64.5	42.6	46.2	37.7	28.2

COLLEGE ENROLLMENT

	12 Months	16 Months
School	61.7	70.0
District	61.7	70.0
State	69.5	73.2

FRESHMEN ON TRACK

School	96.8
District	96.8
State	83.8

CTE ENROLLMENT

School	144
District	144
State	275,524

ADVANCED COURSE WORK (AP/IB/DUAL CREDIT)

	GRADE 10	GRADE 11	GRADE 12
School	0	2	7
District	0	2	7
State	27,086	56,178	71,104

State	5,113	11,713	14,444	43	1,745	1,679	43	5,050	8,417
Non Low Income									
School	0	0	1	0	0	0	0	2	7
District	0	0	1	0	0	0	0	2	7
State	17,281	30,987	36,935	38	729	777	38	10,863	20,318

POST-SECONDARY REMEDIATION (CLASS OF 2015)	
School	72.7
District	72.7
State	46.8

HIGH SCHOOL 4-YEAR GRADUATION RATE														
	Gender			Race / Ethnicity							LEP	Migrant	Students with Disabilities	Economically Disadvantaged
	All	Male	Female	White	Black	Hispanic	Asian	Native Hawaiian/Pacific Islander	American Indian	Two or More Races				
School	96.5	93.9	100.0	94.7		100.0							90.9	100.0
District	96.5	93.9	100.0	94.7		100.0							90.9	100.0
State	86.9	84.5	89.3	90.6	78.5	83.7	94.4	82.8	81.5	85.9	74.6	68.8	72.2	79.5

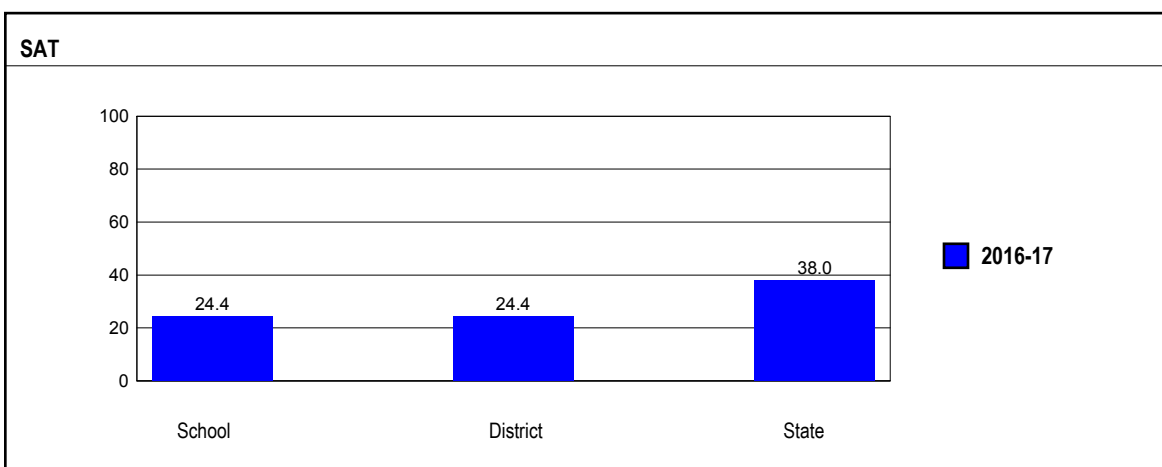
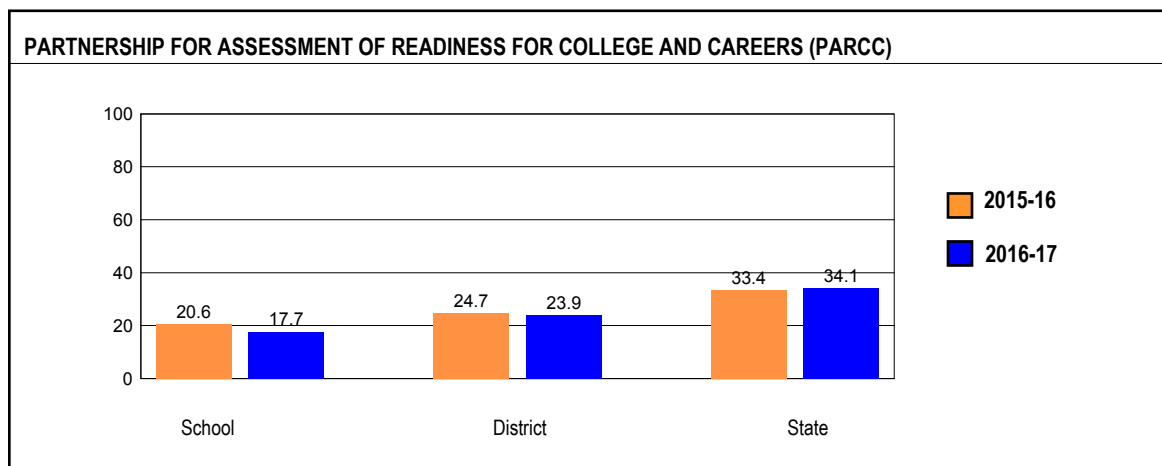
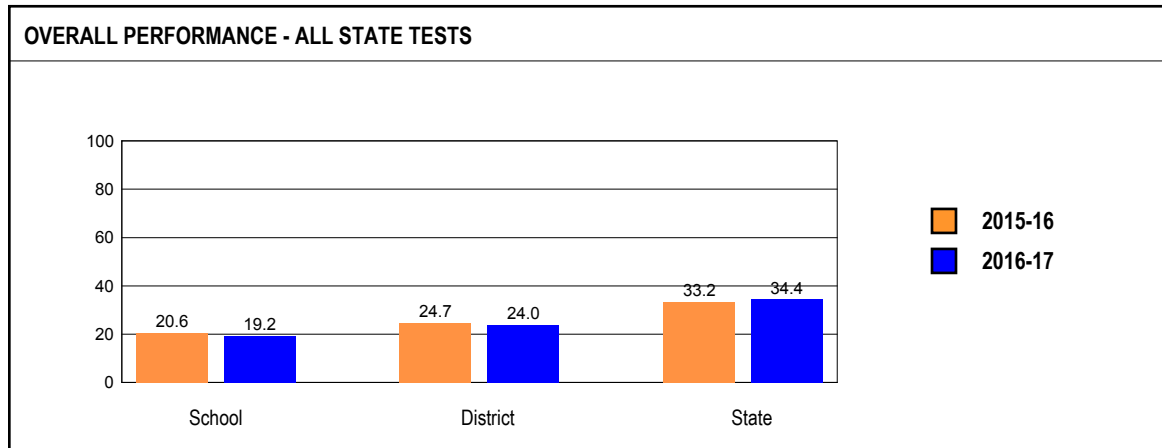
HIGH SCHOOL 5-YEAR GRADUATION RATE														
	Gender			Race / Ethnicity							LEP	Migrant	Students with Disabilities	Economically Disadvantaged
	All	Male	Female	White	Black	Hispanic	Asian	Native Hawaiian/Pacific Islander	American Indian	Two or More Races				
School	100.0	100.0	100.0	100.0		100.0								100.0
District	100.0	100.0	100.0	100.0		100.0								100.0
State	87.9	85.8	90.2	91.5	79.7	84.9	95.3	86.2	82.6	87.1	78.8	82.6	76.0	81.0

HIGH SCHOOL 6-YEAR GRADUATION RATE														
	Gender			Race / Ethnicity							LEP	Migrant	Students with Disabilities	Economically Disadvantaged
	All	Male	Female	White	Black	Hispanic	Asian	Native Hawaiian/Pacific Islander	American Indian	Two or More Races				
School	98.3	96.9	100.0	96.0		100.0								100.0
District	98.3	96.9	100.0	96.0		100.0								100.0
State	88.2	85.9	90.5	91.6	80.0	85.1	95.6	89.7	84.4	87.7	80.4	40.0	77.2	82.6

DROP OUT RATE BY RACIAL/ETHNIC BACKGROUND AND OTHER INFORMATION														
	Gender			Race / Ethnicity							LEP	Migrant	Students with Disabilities	Economically Disadvantaged
	All	Male	Female	White	Black	Hispanic	Asian	Native Hawaiian/Pacific Islander	American Indian	Two or More Races				
School	0.5	0.9	0.0	0.8		0.0					0.0		0.0	0.0
District	0.5	0.9	0.0	0.8		0.0					0.0		0.0	0.0
State	2.0	2.3	1.8	1.2	4.2	2.7	0.4	1.4	2.7	2.1	3.6	2.5	3.6	3.6

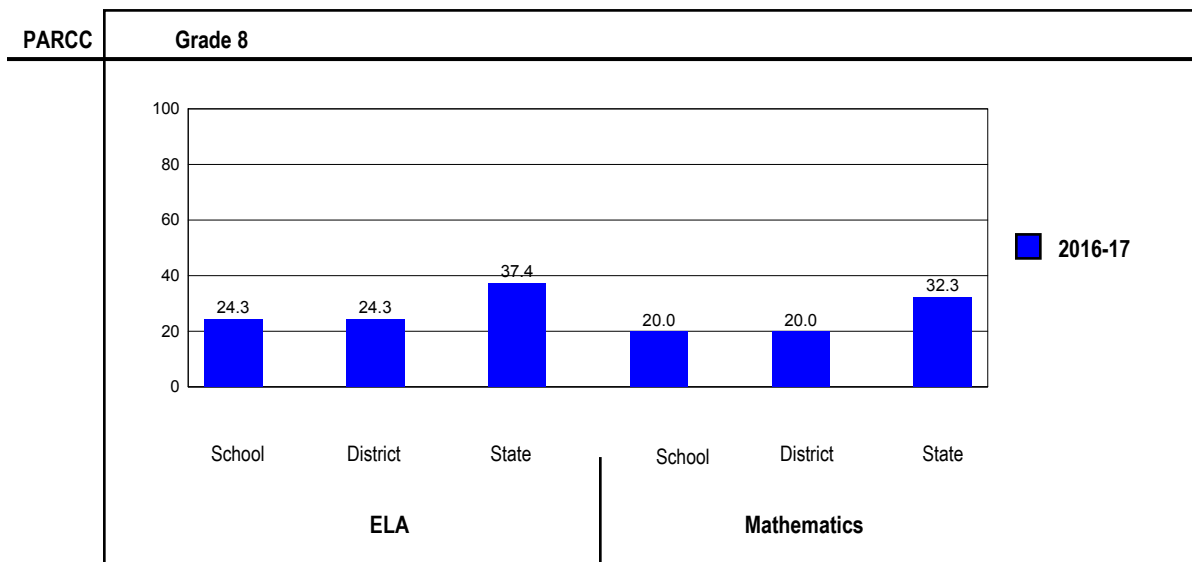
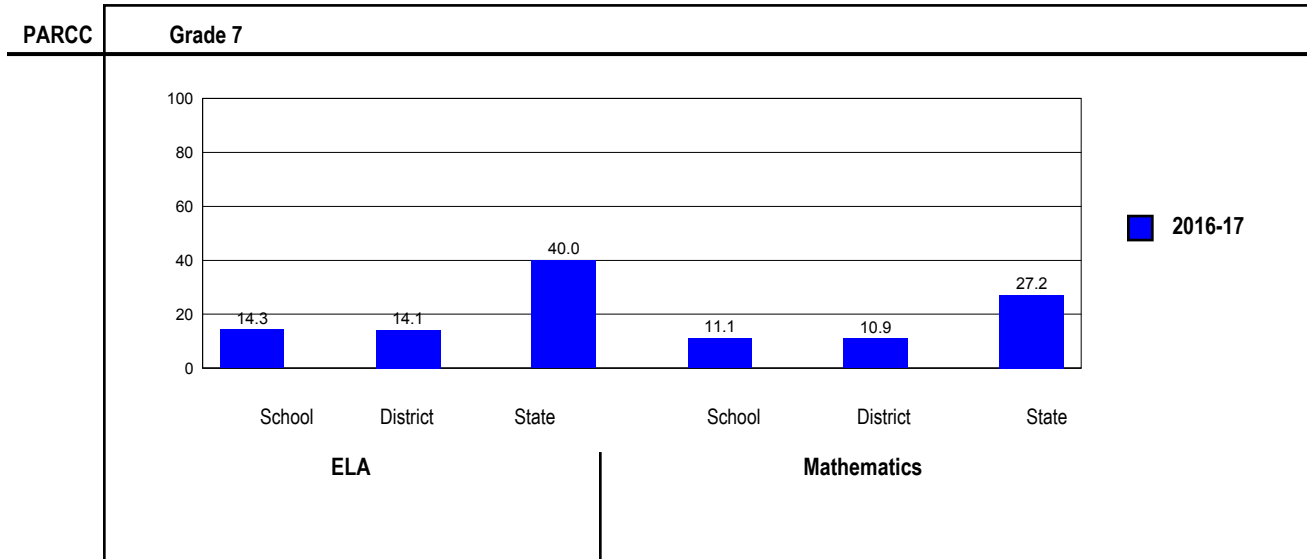
OVERALL STUDENT PERFORMANCE

These charts present the overall percentage of state test scores categorized as meeting or exceeding the PARCC expectations, SAT standards or DLM-AA Standards for your district, and the state.



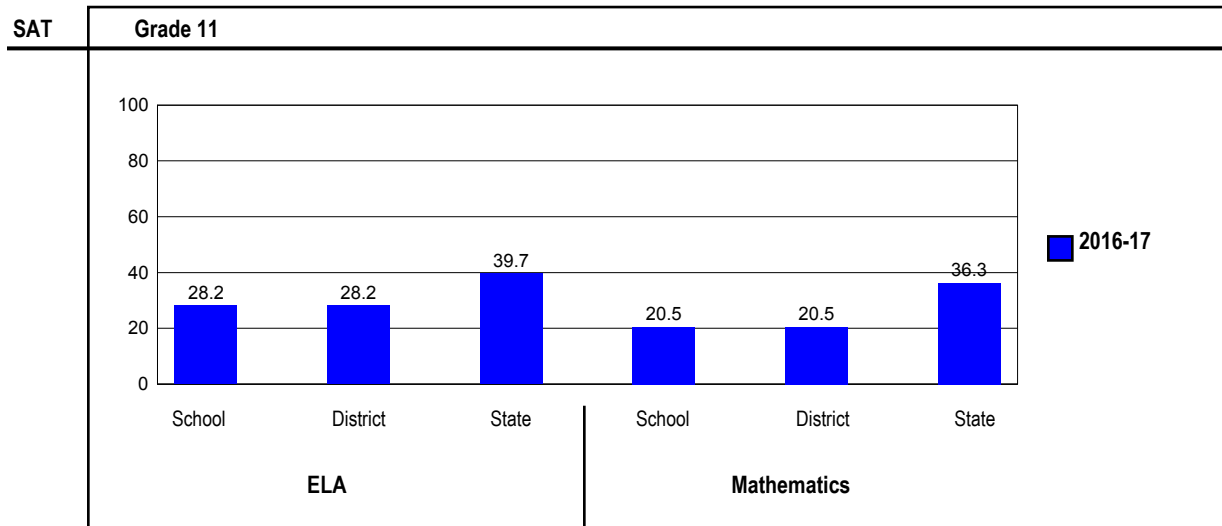
PARCC PERFORMANCE

These charts present the overall percentage of state test scores categorized as meeting or exceeding the PARCC expectations or DLM-AA Standards for your district, and the state.



SAT PERFORMANCE

These show the percentage of student scores meeting or exceeding Standards for the grades and subjects tested on SAT



PERFORMANCE ON STATE ASSESSMENTS

Federal law requires that student achievement results for schools providing Title I services be reported to the general public.

The PARCC is administered to students in grade 3 through 8. SAT is administered to students in grade 11. The DLM-AA is administered to students in grade 3 through 8 and 11 with disabilities whose Individualized Education Programs (IEPs) indicate that participation in the PARCC or SAT would not be appropriate.

Students with disabilities have an IEP. An IEP is a written plan for a child with a disability who is eligible to receive special education services under the Individuals with Disabilities Education Act.

PERCENTAGE OF STUDENTS NOT TESTED IN STATE TESTING PROGRAMS FOR ELA															
		Gender			Racial/Ethnic Background							LEP	Migrant	Students with Disabilities	Economically Disadvantaged
		All	Male	Female	White	Black	Hispanic	Asian	Native Hawaiian /Pacific islander	American Indian	Two or More Races				
School	*Enrollment	172	85	87	100	1	70	1	0	0	0	10	4	21	66
	Reading	0.0	0.0	0.0	0.0		0.0					0.0		0.0	0.0
District	*Enrollment	367	186	181	199	2	161	2	0	0	3	33	6	44	169
	Reading	0.5	0.5	0.6	0.0		1.2					0.0		0.0	1.2
State	*Enrollment	1,044,699	534,146	510,536	505,763	175,236	271,935	51,317	1,081	4,731	34,579	90,597	126	143,977	534,082
	Reading	1.8	1.8	1.8	1.7	2.4	1.7	1.2	3.4	1.1	2.1	1.9	1.6	3.0	1.9

* Enrollment as reported during the testing windows for grades 3 - 8 and grade 11.

Number of LEP Students who have attended schools in the U.S. for less than 12 months and are not assessed on the State's reading/language arts test: 0

PERCENTAGE OF STUDENTS NOT TESTED IN STATE TESTING PROGRAMS FOR MATHEMATICS															
		Gender			Racial/Ethnic Background							LEP	Migrant	Students with Disabilities	Economically Disadvantaged
		All	Male	Female	White	Black	Hispanic	Asian	Native Hawaiian /Pacific islander	American Indian	Two or More Races				
School	*Enrollment	172	85	87	100	1	70	1	0	0	0	10	4	21	66
	Mathematics	0.0	0.0	0.0	0.0		0.0					0.0		0.0	0.0
District	*Enrollment	367	186	181	199	2	161	2	0	0	3	33	6	44	169
	Mathematics	0.5	0.5	0.6	0.0		1.2					0.0		0.0	1.2
State	*Enrollment	1,046,855	535,286	511,552	506,360	175,294	272,701	52,007	1,091	4,740	34,602	93,069	127	143,900	535,352
	Mathematics	1.8	1.8	1.8	1.7	2.5	1.7	1.0	2.7	1.1	2.2	1.4	1.6	3.1	1.8

* Enrollment as reported during the testing windows for grades 3 - 8 and grade 11.

Partnership for Assessment of Readiness for College and Careers (PARCC)

Each Performance Level is a broad, categorical level defined by a student's overall scale score and used to report overall student performance by describing how well students met the expectations for their grade level/course. Each Performance Level is defined by a range of overall scale scores for the assessment. There are five Performance Levels for PARCC assessments:

- Level 1: Did not yet meet expectations
- Level 2: Partially met expectations
- Level 3: Approached expectations
- Level 4: Met expectations
- Level 5: Exceeded expectations

Students performing at levels 4 and 5 met or exceeded expectations, have demonstrated readiness for the next grade level/course and, ultimately, are on track for college and careers. Performance Level Descriptors (PLDs) describe the knowledge, skills, and practices that students should know and be able to demonstrate at each Performance Level in each content area (ELA and mathematics), and at each grade level/course. PLDs are available at <http://avocet.pearson.com/PARCC/Home>.

Grade 7

Grade 7 - All

Levels	ELA					Mathematics				
	1	2	3	4	5	1	2	3	4	5
School	22.2	42.9	20.6	12.7	1.6	12.7	36.5	39.7	11.1	0.0
District	21.9	42.2	21.9	12.5	1.6	12.5	37.5	39.1	10.9	0.0
State	15.4	18.4	26.2	29.8	10.2	11.4	27.1	34.2	24.0	3.2

Grade 7 - Gender

Levels	ELA					Mathematics					
	1	2	3	4	5	1	2	3	4	5	
Male	School	19.4	54.8	16.1	9.7	0.0	9.7	32.3	51.6	6.5	0.0
	District	19.4	54.8	16.1	9.7	0.0	9.7	32.3	51.6	6.5	0.0
	State	20.5	21.4	26.5	25.2	6.3	12.8	27.8	32.7	23.3	3.4
Female	School	25.0	31.3	25.0	15.6	3.1	15.6	40.6	28.1	15.6	0.0
	District	24.2	30.3	27.3	15.2	3.0	15.2	42.4	27.3	15.2	0.0
	State	10.0	15.2	25.9	34.7	14.2	10.0	26.4	35.8	24.8	3.0

Grade 7 - Racial/Ethnic Background

Levels	ELA					Mathematics					
	1	2	3	4	5	1	2	3	4	5	
White	School	16.2	37.8	24.3	18.9	2.7	5.4	24.3	54.1	16.2	0.0
	District	16.2	37.8	24.3	18.9	2.7	5.4	24.3	54.1	16.2	0.0
	State	9.4	14.5	26.3	36.5	13.3	7.0	20.8	36.9	31.4	3.9
Black	School										
	District										
	State	28.7	26.5	25.5	16.5	2.8	22.6	40.7	27.9	8.5	0.3
Hispanic	School	32.0	52.0	12.0	4.0	0.0	24.0	52.0	20.0	4.0	0.0
	District	30.8	50.0	15.4	3.8	0.0	23.1	53.8	19.2	3.8	0.0
	State	20.4	22.7	28.2	23.6	5.1	14.5	33.9	34.9	15.8	0.9
Asian	School										
	District										
	State	5.3	7.5	18.1	39.3	29.8	3.4	9.8	24.9	44.5	17.3
Native Hawaiian/Pacific Islander	School										
	District										
	State	8.4	12.1	26.2	35.5	17.8	9.6	14.8	40.0	33.9	1.7
American Indian	School										
	District										
	State	22.3	22.3	27.1	22.1	6.3	15.9	31.9	32.8	18.0	1.5
Two or More Races	School										
	District										
	State	14.3	18.4	26.0	30.5	10.9	11.2	28.4	32.0	24.7	3.8

Grade 7 - Economically Disadvantaged

Levels	ELA					Mathematics					
	1	2	3	4	5	1	2	3	4	5	
Free/Reduced Price Lunch	School	31.3	40.6	15.6	9.4	3.1	25.0	46.9	18.8	9.4	0.0
	District	30.3	39.4	18.2	9.1	3.0	24.2	48.5	18.2	9.1	0.0
	State	23.2	24.1	27.5	21.0	4.2	17.2	36.0	32.7	13.2	0.8
Not Eligible	School	12.9	45.2	25.8	16.1	0.0	0.0	25.8	61.3	12.9	0.0
	District	12.9	45.2	25.8	16.1	0.0	0.0	25.8	61.3	12.9	0.0
	State	7.4	12.5	25.0	38.8	16.3	5.5	18.1	35.6	35.0	5.7

Grade 8**Grade 8 - All**

Levels	ELA					Mathematics					
	1	2	3	4	5	1	2	3	4	5	
School		10.0	25.7	40.0	24.3	0.0	11.4	24.3	44.3	18.6	1.4
	District	10.0	25.7	40.0	24.3	0.0	11.4	24.3	44.3	18.6	1.4
	State	16.6	19.9	26.1	31.2	6.2	23.6	20.6	23.6	27.7	4.6

Grade 8 - Gender

Levels	ELA					Mathematics					
	1	2	3	4	5	1	2	3	4	5	
Male	School	13.9	38.9	33.3	13.9	0.0	8.3	25.0	41.7	22.2	2.8
	District	13.9	38.9	33.3	13.9	0.0	8.3	25.0	41.7	22.2	2.8
	State	22.4	23.0	25.8	25.2	3.6	26.3	20.8	22.3	25.8	4.7
Female	School	5.9	11.8	47.1	35.3	0.0	14.7	23.5	47.1	14.7	0.0
	District	5.9	11.8	47.1	35.3	0.0	14.7	23.5	47.1	14.7	0.0
	State	10.5	16.6	26.4	37.6	8.8	20.6	20.3	24.8	29.8	4.4

Grade 8 - Racial/Ethnic Background

Levels	ELA					Mathematics					
	1	2	3	4	5	1	2	3	4	5	
White	School	4.8	28.6	42.9	23.8	0.0	9.5	28.6	40.5	19.0	2.4
	District	4.8	28.6	42.9	23.8	0.0	9.5	28.6	40.5	19.0	2.4
	State	11.1	16.6	26.5	37.9	7.8	15.5	17.5	25.7	35.7	5.6
Black	School										
	District										
	State	29.4	27.0	25.1	17.1	1.4	43.4	25.9	18.8	11.2	0.7
Hispanic	School	18.5	22.2	37.0	22.2	0.0	14.8	18.5	51.9	14.8	0.0
	District	18.5	22.2	37.0	22.2	0.0	14.8	18.5	51.9	14.8	0.0
	State	21.1	24.1	27.5	24.5	2.8	29.5	25.5	23.9	19.7	1.4
Asian	School										
	District										
	State	5.1	7.5	18.6	46.8	22.0	6.6	8.3	16.5	45.7	22.9
Native Hawaiian/Pacific Islander	School										
	District										
	State	9.5	13.1	25.5	43.8	8.0	16.4	10.7	27.1	40.0	5.7
American Indian	School										
	District										
	State	23.1	23.3	24.2	25.3	4.2	31.0	22.1	22.8	21.0	3.1
Two or More Races	School										
	District										
	State	16.5	18.5	25.7	31.3	8.0	24.4	19.7	22.6	27.4	6.0

Grade 8 - Economically Disadvantaged

Levels	ELA					Mathematics					
	1	2	3	4	5	1	2	3	4	5	
Free/Reduced Price Lunch	School	26.3	21.1	31.6	21.1	0.0	31.6	15.8	52.6	0.0	0.0
	District	26.3	21.1	31.6	21.1	0.0	31.6	15.8	52.6	0.0	0.0
	State	24.5	25.2	26.5	21.5	2.3	34.2	25.4	22.1	17.0	1.3
Not Eligible	School	3.9	27.5	43.1	25.5	0.0	3.9	27.5	41.2	25.5	2.0
	District	3.9	27.5	43.1	25.5	0.0	3.9	27.5	41.2	25.5	2.0
	State	8.7	14.6	25.6	41.0	10.1	12.8	15.7	25.0	38.5	7.9

SAT

Each Performance Level is a broad, categorical level defined by a student's score and used to report overall student performance by describing how well students met the expectations for their grade level/course. Each Performance Level is defined by a range of overall scores for the assessment. There are four Performance Levels for SAT:

- Level 1 -- Partially Meets Standards The student has only partially met standards & demonstrates a **minimal** understanding of the knowledge & skills needed relative to the Illinois Learning Standards.
- Level 2 -- Approaching Standards The student is approaching the proficiency level & demonstrates an **incomplete** understanding of the knowledge & skills needed relative to the Illinois Learning Standards.
- Level 3 -- Meet Standards The student has met the proficiency level & demonstrates **adequate** understanding of the knowledge & skills needed relative to the Illinois Learning Standards.
- Level 4 -- Exceed Standards The student has exceeded the proficiency level & demonstrates a **thorough** understanding of the knowledge & skills needed relative to the Illinois Learning Standards.

SAT**SAT - All**

Levels		ELA				Mathematics			
		1	2	3	4	1	2	3	4
School		35.9	35.9	17.9	10.3	41.0	38.5	17.9	2.6
District		35.9	35.9	17.9	10.3	41.0	38.5	17.9	2.6
State		22.9	37.4	26.7	13.0	31.1	32.6	28.5	7.8

SAT- Gender

Levels		ELA				Mathematics			
		1	2	3	4	1	2	3	4
Male	School	27.8	27.8	27.8	16.7	22.2	44.4	33.3	0.0
	District	27.8	27.8	27.8	16.7	22.2	44.4	33.3	0.0
	State	26.2	36.4	24.9	12.4	30.8	30.9	28.9	9.5
Female	School	42.9	42.9	9.5	4.8	57.1	33.3	4.8	4.8
	District	42.9	42.9	9.5	4.8	57.1	33.3	4.8	4.8
	State	19.5	38.4	28.5	13.6	31.3	34.3	28.1	6.2

SAT - Racial/Ethnic Background

Levels		ELA				Mathematics			
		1	2	3	4	1	2	3	4
White	School	23.8	42.9	19.0	14.3	33.3	38.1	23.8	4.8
	District	23.8	42.9	19.0	14.3	33.3	38.1	23.8	4.8
	State	14.8	34.2	33.2	17.8	21.0	31.8	36.8	10.4
Black	School								
	District								
	State	41.6	41.7	13.7	3.0	56.4	31.9	10.9	0.8
Hispanic	School	50.0	27.8	16.7	5.6	50.0	38.9	11.1	0.0
	District	50.0	27.8	16.7	5.6	50.0	38.9	11.1	0.0
	State	31.6	44.3	19.4	4.7	41.2	37.2	19.5	2.1
Asian	School								
	District								
	State	10.2	24.6	33.5	31.8	10.8	22.1	38.8	28.3
Native Hawaiian/Pacific Islander	School								
	District								
	State	16.2	39.7	26.5	17.6	28.7	27.2	33.1	11.0
American Indian	School								
	District								
	State	28.4	41.6	20.4	9.7	41.0	29.5	24.7	4.8
Two or More Races	School								
	District								
	State	19.0	35.8	27.8	17.4	28.2	31.5	29.7	10.6

SAT - Economically Disadvantaged

Levels	ELA				Mathematics			
	1	2	3	4	1	2	3	4
Free/Reduced Price Lunch								
School	40.0	40.0	20.0	0.0	40.0	60.0	0.0	0.0
District	40.0	40.0	20.0	0.0	40.0	60.0	0.0	0.0
State	36.2	42.9	17.1	3.9	47.2	34.5	16.4	1.9
Not Eligible								
School	33.3	33.3	16.7	16.7	41.7	25.0	29.2	4.2
District	33.3	33.3	16.7	16.7	41.7	25.0	29.2	4.2
State	13.2	33.4	33.7	19.7	19.3	31.2	37.3	12.2