

# TytoCare Cart Setup Instruction

## List of Materials

- JCO cart
  - Base
  - Arm/Mount
- Cart Basket
- iPad Pro
- TytoCare Device with peripherals
- Headset
- Extension cord
- Tongue depressor attachment disposables
- Ear specula attachment disposables

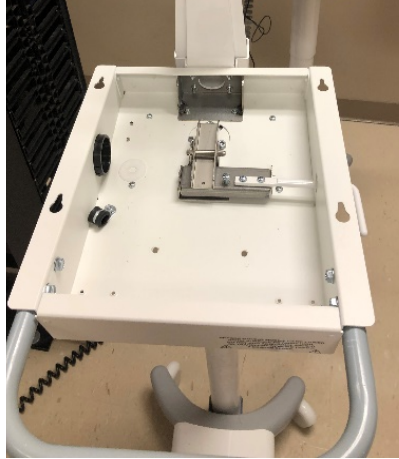
1. The first 2 items you will need are the JCO cart base and the JCO arm/mount.



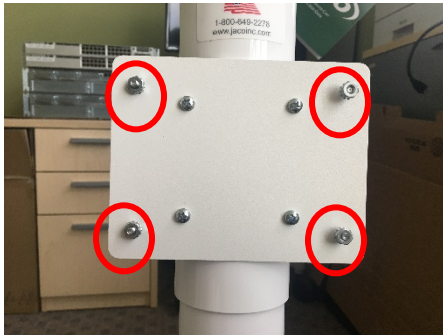
2. Connect the arm to the base by lining up the 4 screws in the back of the cart with the 4 holes in the arm/mount. Use the Philips screw driver/or star head screw driver to tighten into place.



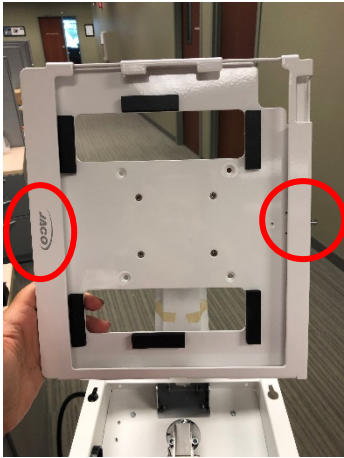
3. Remove the top of the JCO cart by loosening the 4 bolts underneath the edges of the JCO cart. There will be 2 on each side of the cart (do not remove the bolts completely). Take out accessory kit, this will be used for later.



4. There will be a mount on the stand of the cart. Remove the 4 outer bolts from the screws on the mount. Next take the basket place on the screws and put the bolts back on and tighten the basket into place.



5. With setting up the iPad make sure Jaco is on the left hand side and the lock is on the right hand side. Unlock the mount with the key tapped to the mount, when the pin is pointing out this is when it is unlocked.



6. Place iPad in mount and shut the mount. Make sure camera is at the top of the iPad and the charger is at the bottom. To secure iPad in the mount press the pin in like shown.



1. Take the extension cord, pull through the hole in the side and lay it down. Velcro down to side to cart to ensure the extension cord does not move around. Then plug tytocare charger into extension cord. Pull charger through side of cart, enough to get to tyto device, zip tie extras in side of cart.



7. Plug iPad charger into the extension cord, pull iPad charge up through arm of the cart as shown. Then plug the iPad charger into the iPad.



8. Place lid on top of cart. DO NOT tighten down till the end. Take 2 pieces of Velcro and place on bottom of tytocare case, place tytocare on cart.



9. Take tytocare device and plug the charger into it. Plug extension cord into wall and ensure that the iPad and tytocare device are getting power. Then tighten the 4 bolts underneath the lid for the top of the cart.



10. Place the box of otoscope tips and tongue depressors as well as the head set into the basket.  
And test with the hub.

