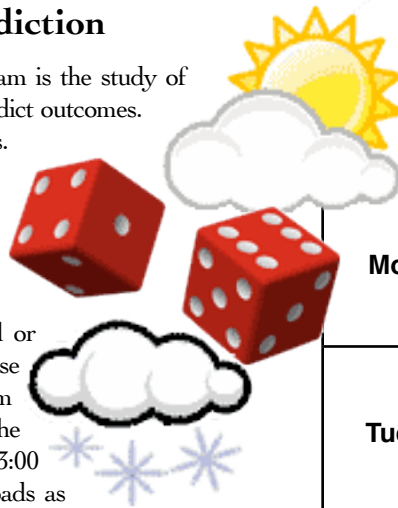




Probability & Prediction

One of the components of our math program is the study of probability and the use of probability to predict outcomes. Students often use this data to create graphs. One of my favorite examples of this work is in Mrs. Wilcox's third grade class where they use probability to predict the contents of a box of valentine candies. Probability is an important skill especially when one determines the necessity of delaying school or closing school. The decision to delay or close school is made between 4 am and 5:30 am based upon what is likely to exist between the hours of 6:30 am -8:30 am and 1:00 pm and 3:00 pm. The conditions of the most remote roads as well as the ability of busses to operate safely are significant factors in the decision. When possible we try to delay school as opposed to cancel school. (Hey, as far as I am concerned, I am up anyway). I have found that the best way to predict weather is **AFTER** it has taken place. According to my recent study accuracy increased significantly when predictions were made following the actual events. To assuage the skeptics of my study I will elaborate on my methods. These studies were conducted at around 5 pm following the days weather and include three data points 1) first hand observation of what actually took place, 2) the condition of my Ford Exploder's front bumper (which you may notice had several unique contours and is missing most of the plastic parts), and 3) the number of questionable glances I get from parents who have unexpectedly spent the day with their spirited children.

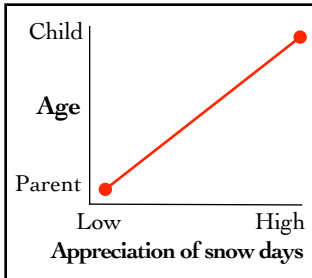
As a result of this study I have come to the following conclusions: my SUV's airbags don't work, I hate meteorologists, the probability of anyone below the age of 14 disagreeing with school closing is 0% (I graphed it so it has to be true), and finally, it is really hard to fill the newsletter with a week's worth of events when the first week back from winter vacation we have a snow day.



Lunch
Week of
1/12 to 1/16



Monday	BBQ Chicken over biscuits Hot Vegetable Garden Salad Jello with Whip-cream
Tuesday	American Chop Suey Garlic Bread Garden Salad Fresh Fruit
Wednesday	Grilled Cheese & Chicken Noodle Soup Garden Salad Fresh Fruit
Thursday	Chicken Burgers Garden Salad Hot Vegetable Hot Chocolate
Friday	Homemade Veggie & Meat Pizza Garden Salad Mixed Fresh Fruit Cookies



A la carte Fruit and Milk are available everyday

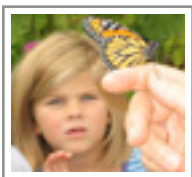


This institution is an equal opportunity provider.

SERVING THE LYME COMMUNITY FOR OVER 100 YEARS

THE LYME SCHOOL

Newsletter



• **VOLUME: 3** •
2008-2009
SCHOOL YEAR

INK Spot

Imagination and Knowledge

Hopefully you found your color copy of INK in your child's back pack which was sent out before winter break

My INK submission in honor of Ms. Cornell's haiku poetry class...

Haikus are Japanese poems of 5 lines which contain 5 syllables, then 7 syllables, followed by 5 syllables.

Ode to my driveway

Snow falling.... again
Time to haul out the shovel
I loathe my driveway

Finished shoveling
Oh, sure... here comes the snowplow
Expletive, winter



3rd grade does it again!

Mrs. Wilcox's students had the most Box Tops overall (404) and the most per student (18.36) winning themselves another ice cream party!

2nd Place goes to the 5th grade with 290 total and 15.26 per student. **3rd place** goes to Mrs. Officer 7th grade class with 195 total and 13.9 per student. **4th place** goes to 2nd grade and **5th place** to the Kindergarten class.

We collected 1355 this time! Our total for the school year is 3875 Box Tops. We are past the half-way mark to our goal of collecting 7000 Box Tops to earn \$700 for Lyme School! If every student collects 16 more Box Tops by the end of the year, we will meet our goal. Keep up the awesome job!

Next Box Top collection date is March 19, 2009.

Message from the
P.T.O.

