



SERVING THE LYME COMMUNITY
FOR OVER 100 YEARS

THE LYME SCHOOL

Newsletter

Lyme School District Meeting and Renovation Bond Vote

6:00 pm Thursday, March 7, 2013

Community Newsletter Mid Winter



IN 250 WORDS OR LESS WHAT IS THE SCHOOL BOARD PROPOSING WITH THE SCHOOL RENOVATION BOND?

After five years of evaluating potential options, the School Board is proposing a significant renovation to the Lyme School financed through a 20-year bond. This renovation will solve the dual challenges of larger student populations and executing an educational model that focuses on individual outcomes and results, while at the same time making the building more energy efficient. The bond includes renovation of roughly 10,000 square feet, with the addition of a second floor on the Laura Barnes wing that creates 10,000 square feet of new instructional space.

More specifically the bond will:

- Rebuild 1st floor elementary to fit current population driven needs and maximize flexibility to provide a better educational experience for each student today and respond the population changes in the future.
- Create 4 new classroom spaces (and replace the 2 trailers).
- Create new small group and individual instructional spaces that enable the school to support differentiated instruction and help each child succeed.
- Move the art room to allow for a multi-purpose space for band, chorus, and double activity.
- Provide appropriate fire protection, capture costs that would have been incurred in the next 5 years to maintain the Laura Barnes wing and replace deteriorating parts of the school infrastructure.
- Improve the school's Americans With Disabilities Act (ADA) compliance and bring portions of the facility up to building code.
- Fix issues with the kitchen that also serves the town's Emergency shelter.
- Keep the school primarily within its current footprint.

WHY BUILD NOW?

- This project "captures" \$500,000 in repairs that would be necessary to maintain the school in its current layout.
- With only basic repairs the school would still need a trailer based solution to handle the current population. This costs between \$50,000 and \$75,000 per year and only provides an incomplete, stop-gap solution, without building any equity.
- The next trailer will likely need to be placed in front of the school after removing trees.
- Low interest rates reduce borrowing costs on the project if acted on soon.
- Interest rates aside, the cost to build is estimated to escalate at 8% per year; waiting to fix a clearly apparent problem only costs more money in the future. This is based on actual comparisons of school projects in Lebanon and large scale residential construction in Hanover.
- The solution is needed now, or rather, has been needed for years.

WHAT TYPE OF IMPACT DOES THAT HAVE ON TAXES?

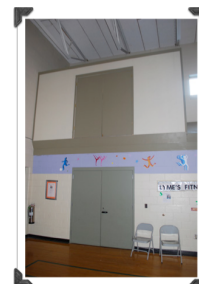
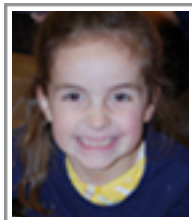
Taxes due December 2012 included payments for the 1994 School Bond that were raised by taxes of 25¢ per \$1000 of assessed value and the rental of temporary classroom trailers at 16¢ per \$1000. (41¢ per \$1000 total).

• If the new bond and an accompanying article are approved by voters the 1994 bond will be retired with a final tax assessment of 48¢ per \$1000 of assessed value. In this first year of the new Bond the December 2013 tax assessment from the Bond would be 16¢ per \$1000, as only interest would be paid in year one. (64¢ per \$1000 total).

• The following year the first full payment on the 3.65M bond would be due. This is estimated to average \$232,000 per year or 72¢ per \$1000 of assessed value on the December 2014 tax bill.

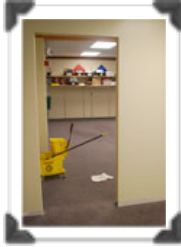
SO THAT MEANS?

The median home value in Lyme is \$300,000. If that was the assessed value of your home, this past year you paid \$123 towards building bonds and trailer rentals at the Lyme School. If all the new bond articles pass, next year you would pay \$192 towards building bonds. The following year the bond payment would be \$216. This assumes zero growth in the tax base. If the tax base grows, the amount each household pays goes down.



**WHAT HAPPENS IF THE BOND DOES NOT PASS?**

- The School District will propose alternate articles that will:
- Authorize funds for continued rental of 2 trailers already on site and the addition of one other trailer, which will likely be sited in front of the school, at an annual tax cost of 24 cents per \$1000.
- Authorize funds to prepare for necessary repairs to the Laura Barnes wing of the school, at a cost of 25 cents per \$1000.
- Additionally we will continue to pay off the 1994 construction bond at 24¢ per \$1000 on the December 2013 tax bill, and again on the December 2014 tax bill.

**WHEN WILL THIS VOTE TAKE PLACE?**

The School Renovation Bond and the School Budget are voted on at the School District Meeting, which will be on Thursday, March 7 at 6:00 pm

DO I NEED TO BE PRESENT AT THE MEETING TO VOTE?

YES, you must be present to vote. As with town meeting, warrant articles can be amended on the floor, so per state law only those present at the meeting can vote, as otherwise it is not possible to know exactly what is voted on.

WHO CAN VOTE?

Any REGISTERED voter who lives in Lyme may vote. But according to the NH Secretary of State's office people wanting to vote at the school district meeting must be registered voters **BEFORE** they get there. **The last day anyone can register to vote is March 2nd.**

HOW WILL THE VOTE WORK?

- The meeting will start with a presentation of Article 1 the School Bond at 6:00 pm, and after discussion and debate of the article, the Moderator will call for a ballot vote. At that point the polls will be open for at least one hour. (it may be a few minutes more than one hour, but it won't be less.) During that hour other articles will be discussed but will not be voted on until the Bond voting concludes.
- As with Town Meeting, voters will be encouraged to check in with the ballot clerks when they arrive to pick up a voting card that has Yes/No tear off cards that can be used for the bond vote and any subsequent articles that may be decided by written ballot. The ballot clerks will be available to check people in starting at 5:30 pm.

CAN MY WIFE/HUSBAND/PARTNER AND I BOTH VOTE?

Yes, every registered voter in Lyme is eligible to vote. Since the polls will be open for one hour if some families need to have one parent at home it is possible to have parents switch during the one-hour voting period for the bond so that both can vote.

IS THERE CHILD CARE AVAILABLE?

As with many previous years there will be a quiet activity for children in the cafeteria, likely a movie and popcorn. For those with younger children who need care at home Audrey Brown will help match you with middle school and high school students who are available. Email: audreybrown68@gmail.com

**ARE THINGS OVER AFTER THE BOND VOTE?**

After the bond vote we will need to settle an array of other articles depending on whether or not the bond passes. After that we will vote on the core school budget. As the discussion of many of these will take place concurrently with the bond vote we expect the meeting to conclude around 9pm.

HOW CAN I FIND OUT MORE?

- Attend one of the weekly tours of the school at 8:00 am on Wednesdays.
- Email jvalence@lymeschool.org to arrange a tour a time more convenient for you.
- Attend the next public information session on Thursday, February 28 at 7:00 PM at the Lyme School.
- Come to school district meeting at 6:00 pm on Thursday, March 7.

voter check in will open at 5:30 meeting commences at 6pm



Contact me at: jvalence@lymeschool.org
Phone: 795-2125 or just stop by.
You may print color copies of the Newsletters
at: www.LymeSchool.org



But wait, there is more Newsletter!!



The Leaping Lions Roar Store

What: The Seventh Grade School Store.

When: Feb. 27, 28, 29, and March 1

Where: At the Lyme School open before school, at snack, at all lunches, and after school

Selling: school supplies and novelty items.

Also featuring Vitamin water and cool glasses.

Wear your glasses on March 1st for the spirit day!

Opening for business soon!

You'll Roar for More!

This semester the 7th grade studied economics and approached it in a very meaningful, authentic and creative way. The 7th graders were divided into departments: market research & analysis; marketing & advertisement; graphic design; scheduling; accounting; finance; mediation & negotiation; and purchasing. Each department had specific daily tasks to complete which often required them to interface with other departments and work for the good of the business. The students took charge of all business activities from polling Lyme School students to see what they would likely purchase at a school store, to ordering, displaying and selling the goods, to seeking a loan from Mr. Valence to purchase the store inventory. This is where students learned about risk and the real significance of their decisions. Students requested a loan of \$550 (which I have to admit almost knocked me out of my chair). However, it motivated me to be a skeptical lender (we could have used more of those a few years ago) because the stakes were so high. I examined their business plan, their market research, price structure, inventory and the time line for operation. After consideration of these factors and that both of the representatives were dressed in a shirt and tie, I figure they were good for it. After we agreed upon the interest rate of the loan (not sub prime), I insisted that the loan was co-signed by the class - not a teacher - not parents, but the kids. In the case that they could not pay back the loan and the interest *they* would have to repay the loan through other business based fundraisers. **The store is open February 26 - March 1st (Tuesday-Friday).**



Lyme Nursery School Accepting Registrations

Lyme Nursery School is accepting registrations for the 2013/2014 school year. Contact director@lymenurseryschool.org or call 603-795-4567. Scholarships available upon request.

This Week Menus

Week of

2/25 to 3/1



BREAKFAST

Assorted Cereals, Fruit & Yogurt Parfait, Cinnamon Wheat Roll, Special of the Day with Fruit or 100% Fruit Juice & Milk

Breakfast is served at 7:45

Monday	Today's Special Pancakes w/Syrup
Tuesday	Today's Special Warm Cinnamon Roll
Wednesday	Today's Special Whole Wheat French Toast w/Syrup
Thursday	Today's Special Breakfast Burrito
Friday	Today's Special Whole Wheat Bagel & Cream Cheese



Al a carte Fruit and Milk are available everyday

Monday	Hot Diggity Dog Hot Dog on a roll Baked Tater Tots Baked Beans Mixed Fruit
Tuesday	Wok for Life Orange Chicken Stir Fry Steamed Broccoli Buttered Noodles Pineapple
Wednesday	Italian Street Fest Chicken Parmesan Pasta Marinara Fresh Green Salad Pears
Thursday	Brunch for Lunch French Toast Baked Ham Homefries Applesauce
Friday	Fresh Picks Pizza French Bread Pizza Carrot Coins Raisins

CONVERSE FREE LIBRARY

Vacations are a great time to read that book you "never had the chance to" or to discover one that you never knew existed.