

IMBLER SCHOOL DISTRICT SUICIDE PREVENTION, INTERVENTION AND POSTVENTION



IMBLER
SCHOOL DISTRICT
*CAREERS, CITIZENSHIP, COMMUNITY AND
CHARACTER*

Adapted from Willamette ESD 12/2019

PREVENTION SUPPORTS FROM STAFF:

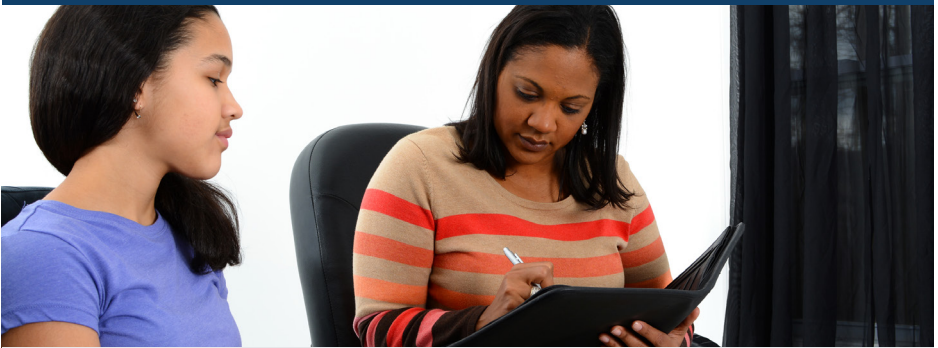
- ❖ Training in QPR (Question, Persuade, Refer) yearly
- ❖ Key staff Trained in ASIST (Applied Suicide Intervention Skills Training)
- ❖ Social Emotional Learning training
- ❖ Collaborative Problem Solving (Secondary)
- ❖ Conscious Discipline (Elementary)
- ❖ Mental health counselor availability
- ❖ Culture of Care

PREVENTION SUPPORTS FROM STUDENTS:

- ❖ K-12 mental health education based on state standards
- ❖ Education on personal safety, how to report unsafe behavior, risk factors and warning signs
- ❖ SAFE Schools tip line access to report unsafe behavior

PREVENTION SUPPORTS FROM PARENTS:

- ❖ Access to school staff to report behavior
- ❖ School partnership with CHD



National Suicide Prevention Lifeline
1-800-272-TALK
www.suicidepreventionlifeline.org

Oregon Youth Line
1-877-968-8491
Text teen2teen to 839863
www.orgeonyouthline.org

Union County Resources:
Center of Human Development: 541-962-8800
Law Enforcement: 541-963-1017

WARNING SIGNS FOR SUICIDE

- ❖ Threatening to hurt or kill themselves
- ❖ Looking for ways to kill themselves-seeking access to pills, weapons, or other means
- ❖ Talking or writing about death, dying or suicide
- ❖ Talking about suicide and then appearing to be fine
- ❖ Giving away possessions, changes in medication, not eating, not sleeping in combination with talk of suicide



If a suicidal attempt, gesture, or ideation occurs or is recognized, report it to the school counselor or school administrator. Call 911, if there is imminent danger. A suicide risk questionnaire is conducted by a trained school staff member (counselor). The screener will do the following:

- ❖ Interview student using suicide risk questionnaire screening form
- ❖ Contact parents to inform and to obtain further information, if needed
- ❖ Complete a Suicide Safety Plan, if needed
- ❖ Take student to Emergency Room, Community crisis mental health agency responds for appropriate placement/treatment
- ❖ Follow up with mental health services on safety plan, continued counseling or services

SCHOOL/DISTRICT RESPONSE:

We will respond to the tragedy in a manner which appropriately supports students and school community impacted by this tragedy. Imbler School District will follow the same protocol for all tragic staff/student deaths, regardless of circumstances. Once the information is confirmed to be accurate, the principal will activate the following response:

CRISIS RESPONSE:

- ❖ Determine level of intervention needed
- ❖ Activate Crisis flight team
- ❖ Contact the family, see what their wishes are
- ❖ Inform faculty and staff
- ❖ Inform students
- ❖ Identify at risk students and staff
- ❖ Create safe room and compile resources there
- ❖ Be aware that persons may still be traumatized months after the event. Refresh staff on prevention protocols and be responsive to signs of risk

GOALS OF POSTVENTION:

- ❖ Support the grieving process
- ❖ Prevent imitative suicides
- ❖ Reestablish healthy school climate
- ❖ Provide long-term surveillance

National Suicide Prevention Lifeline

1-800-272-TALK

www.suicidepreventionlifeline.org

Oregon Youth Line

1-877-968-8491

Text teen2teen to 839863

www.orgeonyouthline.org

Union County Resources:

Center of Human Development: 541-962-8800

Law Enforcement: 541-963-1017

IMBLER SCHOOL DISTRICT

6th & Esther Street

Imbler, OR 97841

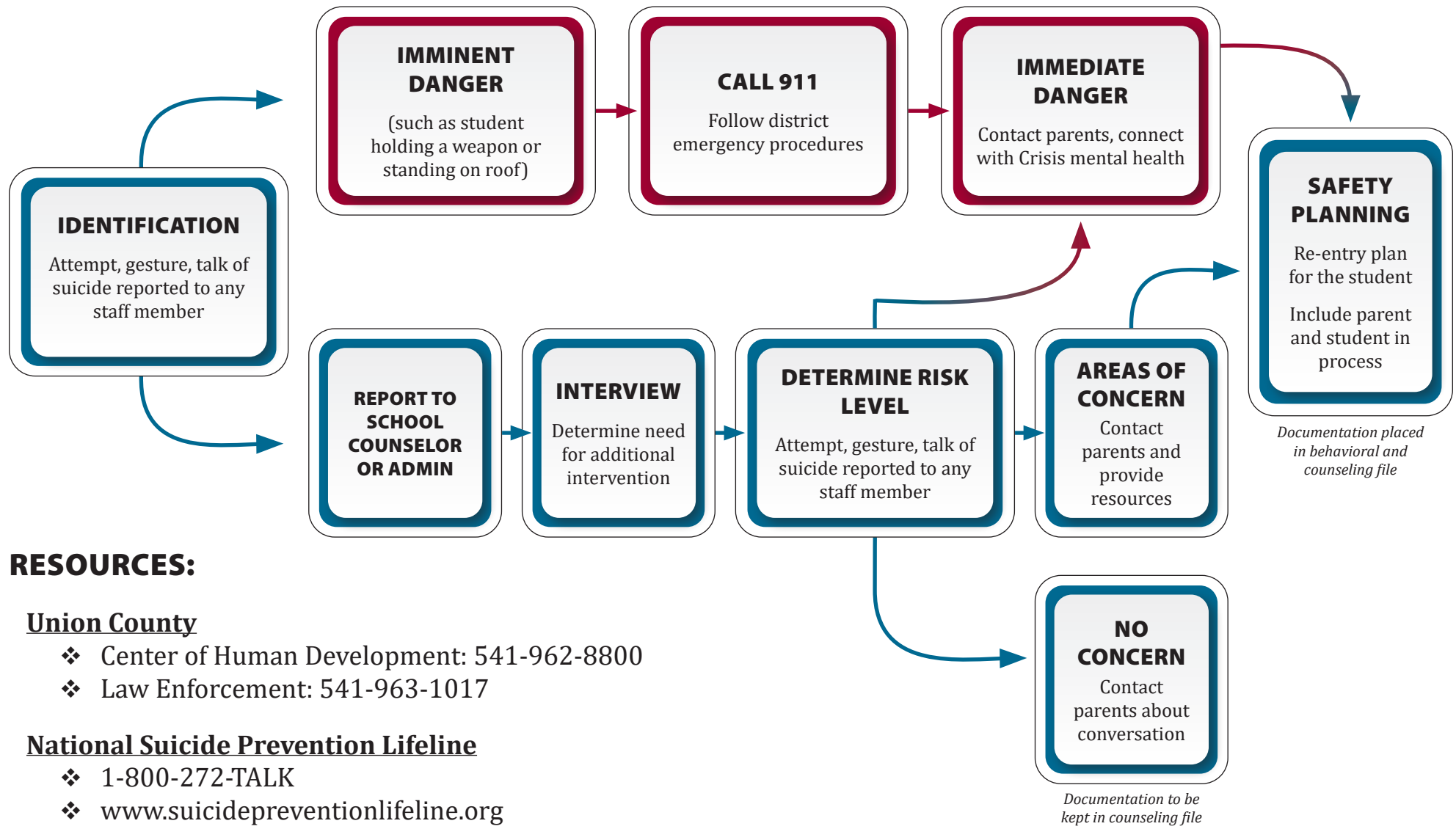
Phone: 541-534-5331

Fax: 541-534-9560

<https://imbler.k12.or.us/>

SUICIDE RISK ASSESSMENT PROCESS FLOW CHART

IMBLER SCHOOL DISTRICT



RESOURCES:

Union County

- ❖ Center of Human Development: 541-962-8800
- ❖ Law Enforcement: 541-963-1017

National Suicide Prevention Lifeline

- ❖ 1-800-272-TALK
- ❖ www.suicidepreventionlifeline.org

Oregon Youth Line

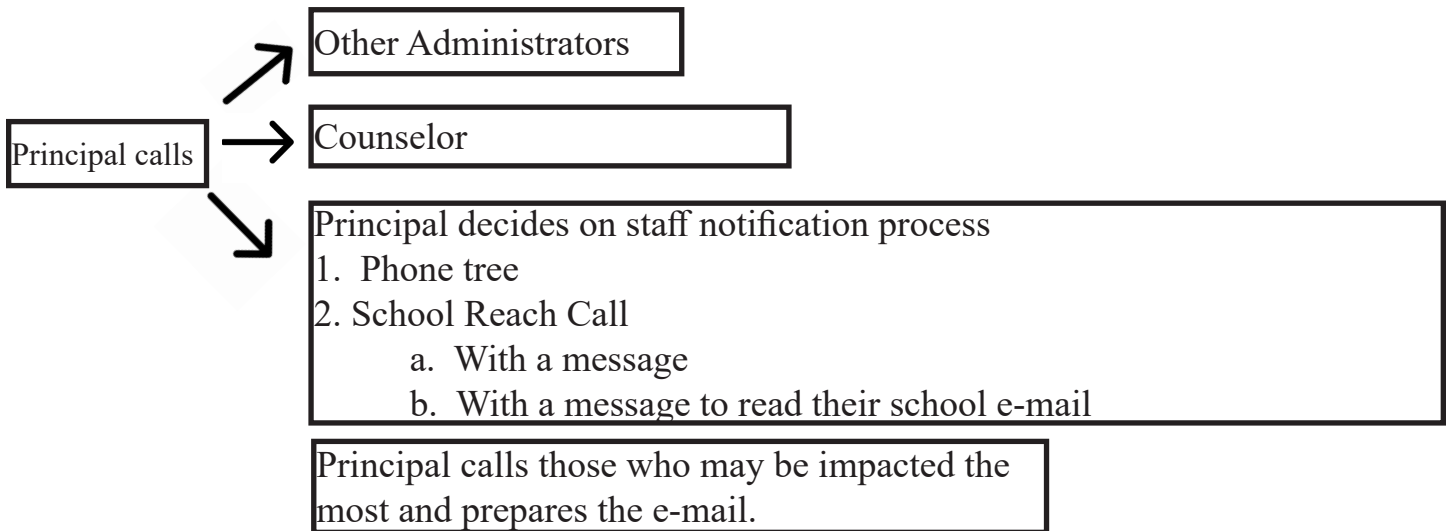
- ❖ 1-877-968-8491

Response to a Crisis/Death in the Imbler School District

The Superintendent and Building Principal are notified about the crisis.

Superintendent or Principal calls the Flight Team Coordinator (currently the IMESD) or decides if they want to use district employees only.

Superintendent or Principal may delegate someone else to activate the Crisis Flight Team.



Superintendent/Principal makes contact with family to offer condolence and to be sure accurate information is reported.

Principal and key meet for initial planning.

Principal mobilizes media management and communications systems.

Principal prepares a statement for staff to read.

Principal prepares a statement needed to send home with students.

Administration can ask for input with counselors and or other administrators about any of the above information.