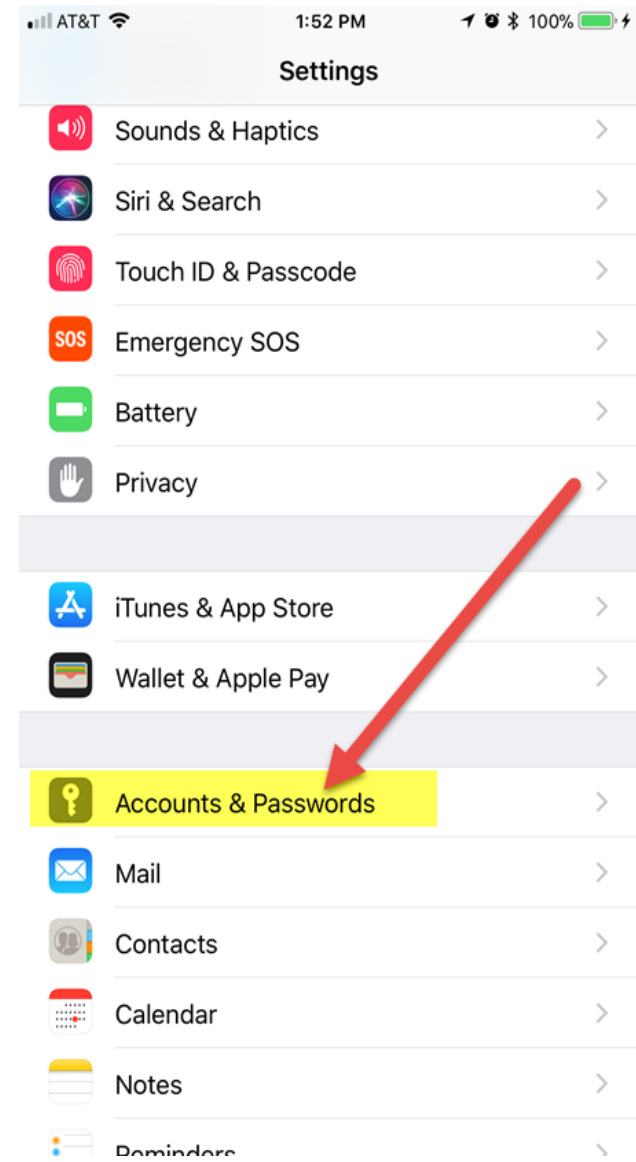
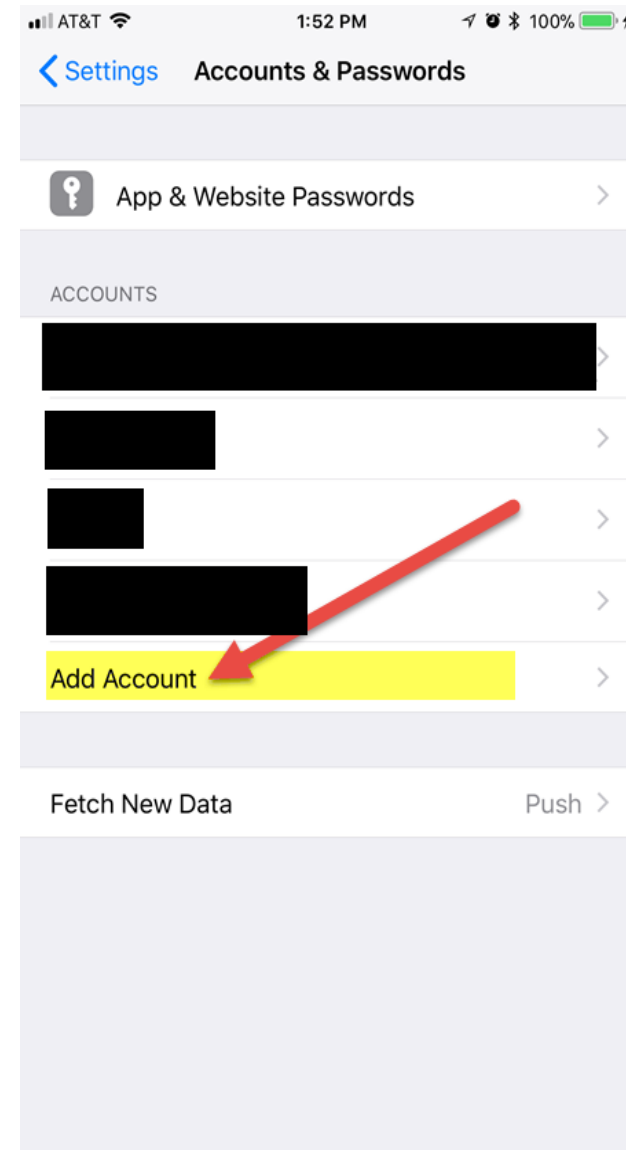


How to add your LPS email  
account to your iPhone  
(with latest IOS)  
29 March 2018

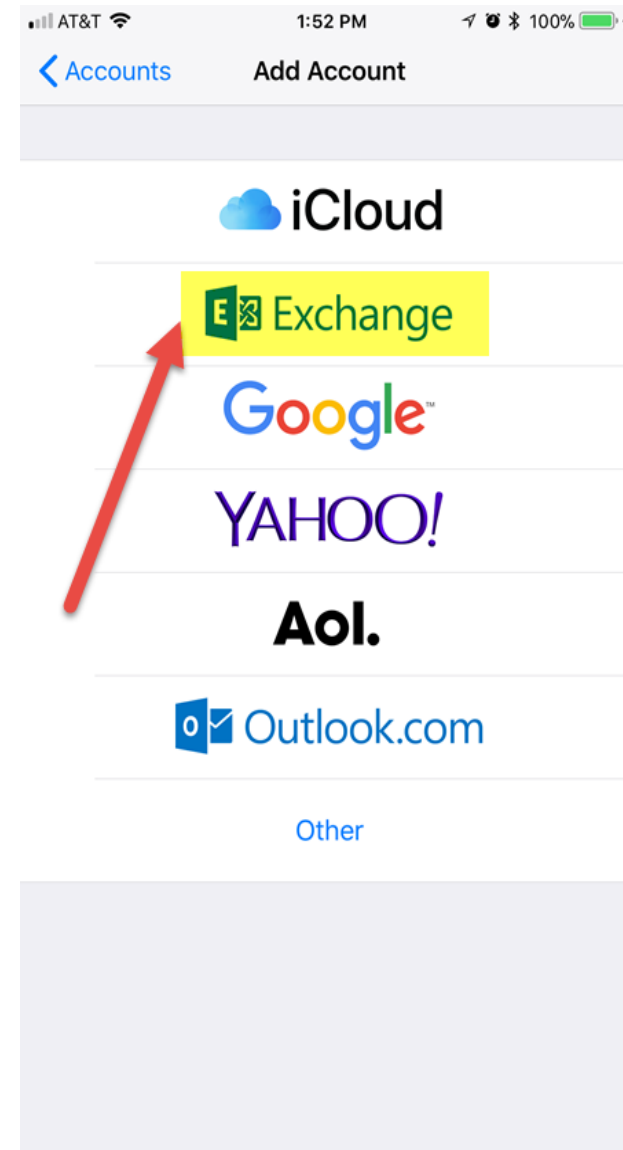
- Go to SETTINGS
- Select ACCOUNTS & PASSWORDS



- Select ADD ACCOUNT



- Select EXCHANGE



- Enter your @lawtonps.org Email address
- Select NEXT in the top right hand corner

AT&T 1:53 PM 100%

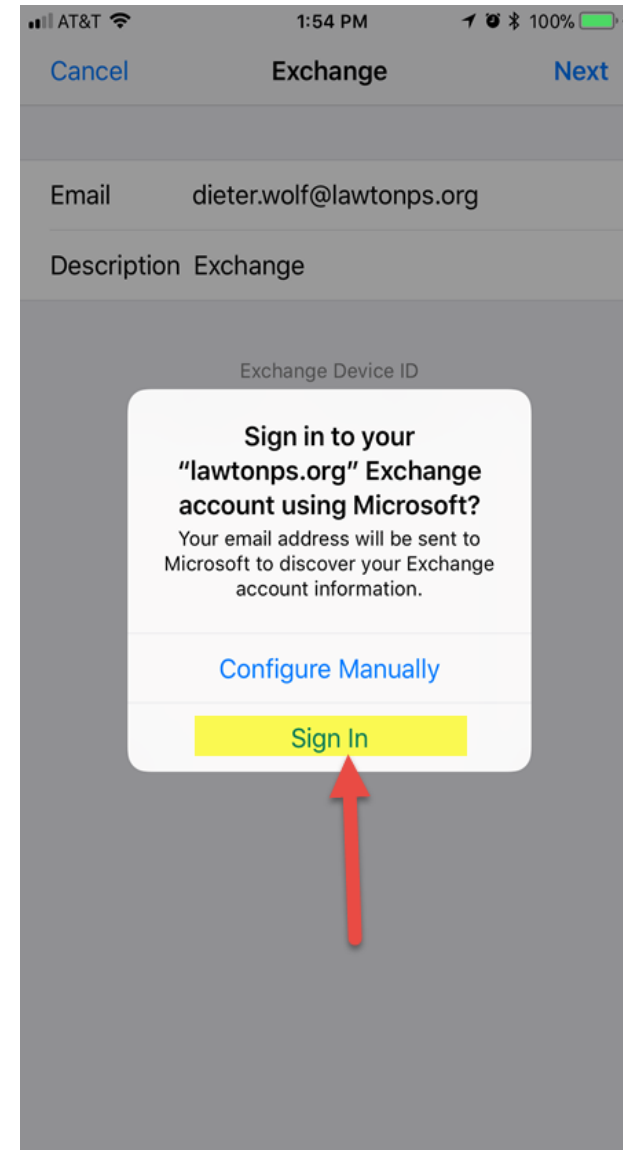
Cancel Exchange Next

Email email@example.com

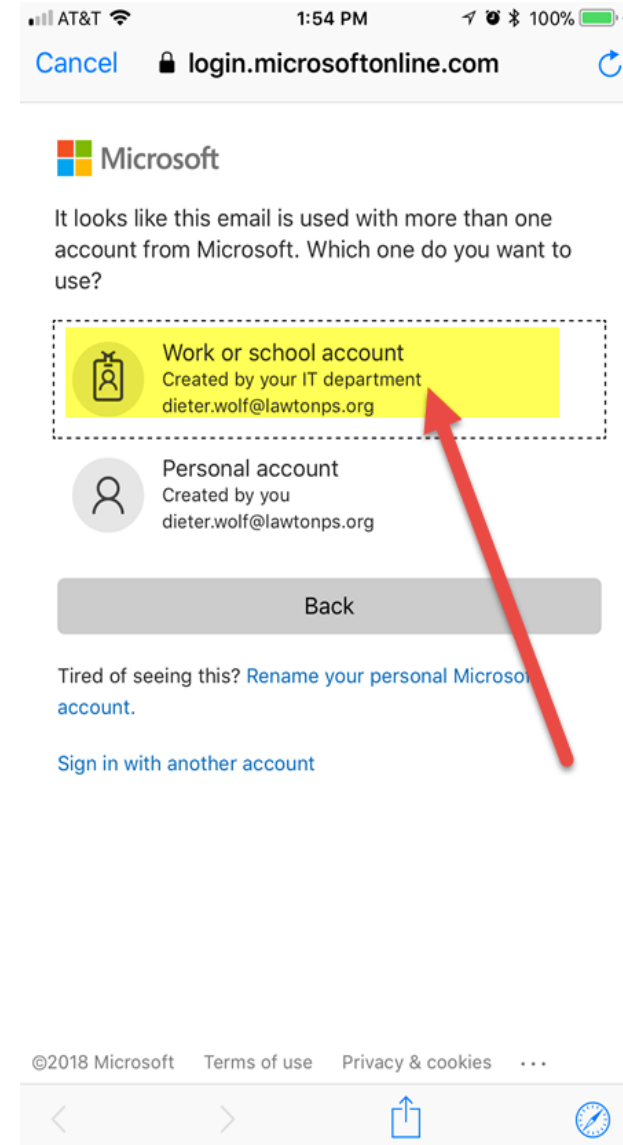
Description My Exchange Account

Exchange Device ID  
5IQDTDDN514OD5L0BLRTM7MTLS

- Select SIGN IN



- Select WORK OR SCHOOL ACCOUNT



- Enter your password
- Select SIGN IN

AT&T 1:54 PM 100%

Cancel login.microsoftonline.com

Microsoft

dieter.wolf@lawtonps.org

Enter password

Password

Back Sign in

[Forgot my password](#)

©2018 Microsoft Terms of use Privacy & cookies



- Select SAVE

That's it, your done.

