

A Public Hearing meeting of the Board of Trustees of the Nixon-Smiley CISD will be held on Monday, November 9, 2020, beginning at 7:00 PM in the Nixon-Smiley Elementary Cafeteria, 500 Anglin St, Smiley, TX 78159.

The subjects to be discussed or considered, or upon which any formal action may be taken, are as follows: (Items do not have to be taken in the same order as shown on the meeting notice.)

1. Establish quorum, call to order
2. Pledges
3. **Public Hearing - School FIRST**
 - a. Overview of School FIRST (Financial Integrity Rating System of Texas)
 - b. Nixon-Smiley CISD District Rating
 - c. Public comments on the report
4. Public comments regarding items on the agenda
5. Curriculum and student achievement - special programs update
6. Safety update
7. Administrative reports / consent agenda
 - a. Financial reports
 - b. Tax collector's report
 - c. Minutes from previous board meeting
 - d. Cafeteria report
 - e. ADA report
 - f. Calendar of events
8. Recapture Agreement for the purchase of attendance credits
9. Call meeting to set date to canvass election
10. Discuss changing the time and place of board meetings
11. Employment reviews
12. Adjourn

If, during the course of the meeting, discussion of any item on the agenda should be held in closed meeting, the board will conduct a closed meeting in accordance with the Texas Open Meetings Act, Tex. Gov't. Code, Chapter 551, Subchapters D and E. Before any closed meeting is convened, the presiding officer will publicly identify the section or sections of the Act authorizing the closed meeting. All final votes, actions, or decisions will be taken in open meeting.

This notice was posted in compliance with the Texas open Meetings Act at 4pm, November 5, 2020.

For the Board of Trustees: Dr. Cathy L. Lauer

INFORMATION

November 9, 2020

SUBJECT: Pledges

PRESENTED BY: Cathy L. Lauer, Ph.D.

The Pledge of Allegiance to the Flag

I pledge allegiance to the Flag of the United States of America, and to the Republic for which it stands, one Nation under God, indivisible, with liberty and justice for all.

The Pledge of Allegiance to the Flag of Texas

Honor the Texas flag; I pledge allegiance to thee, Texas, one state under God, one and indivisible.

INFORMATION

November 9, 2020

SUBJECT: School FIRST Public Hearing

PRESENTED BY: Cathy L. Lauer, Ph.D.

BACKGROUND INFORMATION

The purpose of the financial accountability rating system is to ensure that school districts and open-enrollment charter schools will be held accountable for the quality of their financial management practices and achieve improved performance in the management of their financial resources. The system is designed to encourage Texas public schools to manage their financial resources better in order to provide the maximum allocation possible for direct instructional purposes. The system will also disclose the quality of local management and decision-making processes that impact the allocation of financial resources in Texas public schools. An evaluation of the long-term effectiveness of the system should disclose a measurable improvement in the quality of Texas public schools' financial decision-making processes.

ADMINISTRATIVE CONSIDERATION

Every school district in Texas is now required to prepare an annual financial management report that includes

- The district's financial management performance rating provided by TEA based on its comparison with indicator established by the commissioner of Education for the state's new Financial Accountability System.
- The district's previous performance on the indicators.
- Additional information that could be required by the Commissioner of Education
- Additional information that the district's board of trustees deems useful.

BOARD ACTION REQUESTED

That the Board hear the report, allow for public comment, and discuss item(s) requiring clarification and provide guidance and direction for the Administration.

User: Cathy Lauer
 User Role: District

RATING YEAR DISTRICT NUMBER



Financial Integrity Rating System of Texas

2019-2020 RATINGS BASED ON SCHOOL YEAR 2018-2019 DATA - DISTRICT STATUS DETAIL

Name: NIXON-SMILEY CISD(089903)	Publication Level 1: 8/6/2020 9:26:37 AM
Status: Passed	Publication Level 2: 8/6/2020 11:17:34 AM
Rating: A = Superior	Last Updated: 8/6/2020 11:17:34 AM
District Score: 100	Passing Score: 60

#	Indicator Description	Updated	Score
1	<u>Was the complete annual financial report (AFR) and data submitted to the TEA within 30 days of the November 27 or January 28 deadline depending on the school district's fiscal year end date of June 30 or August 31, respectively?</u>	3/30/2020 1:19:17 PM	Yes
2	Review the AFR for an unmodified opinion and material weaknesses. The school district must pass 2.A to pass this indicator. The school district fails indicator number 2 if it responds "No" to indicator 2.A. or to both indicators 2.A and 2.B.		
2.A	<u>Was there an unmodified opinion in the AFR on the financial statements as a whole? (The American Institute of Certified Public Accountants (AICPA) defines unmodified opinion. The external independent auditor determines if there was an unmodified opinion.)</u>	3/30/2020 1:19:17 PM	Yes
2.B	<u>Did the external independent auditor report that the AFR was free of any instance(s) of material weaknesses in internal controls over financial reporting and compliance for local, state, or federal funds? (The AICPA defines material weakness.)</u>	3/30/2020 1:19:17 PM	Yes
3	<u>Was the school district in compliance with the payment terms of all debt agreements at fiscal year end? (If the school district was in default in a prior fiscal year, an exemption applies in following years if the school district is current on its forbearance or payment plan with the lender and the payments are made on schedule for the fiscal year being rated. Also exempted are technical defaults that are not related to monetary defaults. A technical default is a failure to uphold the terms of a debt covenant, contract, or master promissory note even though payments to the lender, trust, or sinking fund are current. A debt agreement is a legal agreement between a debtor (= person, company, etc. that owes money) and their creditors, which includes a plan for paying back the debt.)</u>	3/30/2020 1:19:17 PM	Yes
4	<u>Did the school district make timely payments to the Teachers Retirement System (TRS), Texas Workforce Commission (TWC), Internal Revenue Service (IRS), and other government agencies?</u>	3/30/2020 1:19:18 PM	Yes
5	This indicator is not being scored.		
4			1 Multiplier Sum

6	<u>Was the number of days of cash on hand and current investments in the general fund for the school district sufficient to cover operating expenditures (excluding facilities acquisition and construction)? (See ranges below.)</u>	3/30/2020 1:19:18 PM	10
7	<u>Was the measure of current assets to current liabilities ratio for the school district sufficient to cover short-term debt? (See ranges below.)</u>	3/30/2020 1:19:18 PM	10
8	<u>Was the ratio of long-term liabilities to total assets for the school district sufficient to support long-term solvency? If the school district's increase of students in membership over 5 years was 7 percent or more, then the school district passes this indicator. See ranges below.</u>	3/30/2020 1:19:19 PM	10
9	<u>Did the school district's general fund revenues equal or exceed expenditures (excluding facilities acquisition and construction)? If not, was the school district's number of days of cash on hand greater than or equal to 60 days?</u>	3/30/2020 1:19:19 PM	10
10	<u>Was the debt service coverage ratio sufficient to meet the required debt service? (See ranges below.)</u>	3/30/2020 1:19:20 PM	10
11	<u>Was the school district's administrative cost ratio equal to or less than the threshold ratio? (See ranges below.)</u>	3/30/2020 1:19:21 PM	10
12	<u>Did the school district not have a 15 percent decline in the students to staff ratio over 3 years (total enrollment to total staff)? (If the student enrollment did not decrease, the school district will automatically pass this indicator.)</u>	3/30/2020 1:19:21 PM	10
13	<u>Did the comparison of Public Education Information Management System (PEIMS) data to like information in the school district's AFR result in a total variance of less than 3 percent of all expenditures by function?</u>	3/30/2020 1:19:23 PM	10
14	<u>Did the external independent auditor indicate the AFR was free of any instance(s) of material noncompliance for grants, contracts, and laws related to local, state, or federal funds? (The AICPA defines material noncompliance.)</u>	3/30/2020 1:19:23 PM	10
15	<u>Did the school district not receive an adjusted repayment schedule for more than one fiscal year for an over allocation of Foundation School Program (FSP) funds as a result of a financial hardship?</u>	3/30/2020 1:19:23 PM	10
			100 Weighted Sum
			1 Multiplier Sum
			100 Score

DETERMINATION OF RATING

A.	Did the district answer 'No' to Indicators 1, 3, 4, or 2.A? If so, the school district's rating is F for Substandard Achievement regardless of points earned.
B.	Determine the rating by the applicable number of points. (Indicators 6-15)
A = Superior	5 90-100
B = Above Standard	80-89

C = Meets Standard	60-79
F = Substandard Achievement	<60

No Rating = A school district receiving territory that annexes with a school district ordered by the commissioner under TEC 13.054, or consolidation under Subchapter H, Chapter 41. No rating will be issued for the school district receiving territory until the third year after the annexation/consolidation.

Home Page: [Financial Accountability](#) | Send comments or suggestions to FinancialAccountability@tea.texas.gov

THE TEXAS EDUCATION AGENCY
1701 NORTH CONGRESS AVENUE · AUSTIN, TEXAS, 78701 · (512) 463-9734

FIRST 5.9.1.0

School FIRST Annual Financial Management Report
NIXON-SMILEY CONSOLIDATED INDEPENDENT SCHOOL DISTRICT

Title 19 Texas Administrative Code Chapter 109, Budgeting, Accounting, and Auditing Subchapter AA, Commissioner's Rules Concerning Financial Accountability Rating System, Section 109.1001(q). Effective 8/1/2018.

Superintendent's Current Employment Contract

Nixon-Smiley CISD publishes a copy of the superintendent's current employment contract on our website at www.nixonsmiley.net under "Required Postings".

Reimbursements Received by the Superintendent and Board Members

**For the Twelve-Month Period:
 September 1, 2018 - August 31, 2019**

Description of Reimbursements	Cathy Lauer Superintendent		Mark Mendez		Bud Box Place 2		Richard Lott Place 3		Bill Griffin Place 4		Lester Warzecha Place 5		Aly Tschoepe Place 6		Jimmy Newman Place 7	
	Meals	\$529.67	\$160.72	\$329.00	\$412.15	\$241.05	\$0.00	\$160.72	\$0.00	\$0.00	\$160.72	\$0.00	\$0.00	\$0.00	\$0.00	\$0.00
Lodging	\$4,681.74	\$1,463.33	\$2,388.53	\$1,445.70	\$585.21	\$0.00	\$1,331.43	\$0.00	\$0.00	\$1,331.43	\$0.00	\$0.00	\$0.00	\$0.00	\$0.00	\$674.67
Transportation	\$2,638.86	\$382.22	\$668.36	\$560.86	\$1,750.37	\$0.00	\$432.22	\$0.00	\$0.00	\$432.22	\$0.00	\$0.00	\$0.00	\$0.00	\$0.00	\$173.65
Motor Fuel	\$0.00	\$0.00	\$0.00	\$0.00	\$0.00	\$0.00	\$0.00	\$0.00	\$0.00	\$0.00	\$0.00	\$0.00	\$0.00	\$0.00	\$0.00	\$0.00
Other	\$2,330.00	\$770.00	\$1,195.00	\$770.00	\$396.00	\$0.00	\$770.00	\$0.00	\$0.00	\$770.00	\$0.00	\$0.00	\$0.00	\$0.00	\$0.00	\$395.00
Total	\$10,180.27	\$2,776.27	\$4,580.89	\$3,188.71	\$2,972.63	\$0.00	\$2,694.37	\$0.00	\$0.00	\$2,694.37	\$0.00	\$0.00	\$0.00	\$0.00	\$0.00	\$1,243.32

All "reimbursements" expenses, regardless of the manner of payment, including direct pay, credit card, cash, and purchase order are to be reported. Items to be reported per category include:
Meals – Meals consumed out of town, and in-district meals at area restaurants (outside of board meetings, excludes catered board meeting meals).
Lodging - Hotel charges.
Transportation - Airfare, car rental (can include fuel on rental, taxis, mileage reimbursements, leased cars, parking and tolls).
Motor fuel – Gasoline.

Other - Registration fees, telephone/cell phone, internet service, fax machine, and other reimbursements (or on-behalf of) to the superintendent and board member not defined above.

Outside Compensation and/or Fees Received by the Superintendent for Professional Consulting and/or Other Personal Services

For the Twelve-Month Period

September 1, 2018 - August 31, 2019

Name(s) of Entity(ies) Amount Received
 National University (Teaching Online) \$24,652.31
 Total: \$24,652.31

Compensation does not include business revenues generated from a family business (farming, ranching, etc.) that has no relation to school district business.

Gifts Received by Executive Officers and Board Members (and First Degree Relatives, if any)
 (gifts that had an economic value of \$250 or more in the aggregate in the fiscal year)

For the Twelve-Month Period
 September 1, 2017 - August 31, 2018

Superintendent	\$0	Mark Mendez	Place 1	\$0	Bud Box	Place 2	\$0	Richard Lott	Place 3	\$0	Bill Griffin	Place 4	\$0	Lester Warzecha	Place 5	\$0	Aly Tschoepe	Place 6	\$0	Jimmy Newman	Place 7	\$0
Total	\$0			\$0			\$0			\$0			\$0			\$0			\$0			\$0

Note – An executive officer is defined as the superintendent, unless the board of trustees or the district administration names additional staff under this classification for local officials.

Business Transactions Between School District and Board Members

For the Twelve-Month Period
 September 1, 2017 - August 31, 2018

Mark Mendez	Place 1	\$0	Bud Box	Place 2	\$0	Richard Lott	Place 3	\$0	Bill Griffin	Place 4	\$0	Lester Warzecha	Place 5	\$0	Aly Tschoepe	Place 6	\$0	Jimmy Newman	Place 7	\$0		
Amounts	\$0			\$0			\$0			\$0				\$0								\$0

Note - The summary amounts reported under this disclosure are not to duplicate the items disclosed in the summary schedule of reimbursements received by board members.

INFORMATION

November 9, 2020

SUBJECT: Citizens Communication
Public comment on a specific agenda item

PRESENTED BY: Board President

BACKGROUND INFORMATION

Board Policy BED (LOCAL) provides an opportunity at all Board meetings, public comment shall be limited to items on the agenda posted with notice of the meeting.

Individuals who wish to participate during the portion of the meeting designated for public comment shall sign up with the presiding officer or designee before the meeting begins as specified in the Board's procedures on public comment and shall indicate the agenda item on which they wish to address the Board.

Public comment shall occur at the beginning of the meeting.

ADMINISTRATIVE CONSIDERATION

While Board Policy allows a citizen to address the Board without being on the agenda, "the Board may not deliberate, discuss, or make any decision on any subject not on the agenda." Board Policy GF (Local) states that if a complaint involves complaints or charges about an employee, it will be heard by the Board in closed meeting unless the employee complained about requests it to be public.

The Board shall allot 30 minutes to hear persons who desire to make comments to the Board. No presentation shall exceed five minutes. The Board may not deliberate, discuss, or make any decision on any subject not on the agenda.

ADMINISTRATIVE RECOMMENDATION

That the Board provides time to hear citizens or groups who request an audience with the Board.

BOARD ACTION REQUESTED

Hear the information presented and ask for additional information as necessary.

The above format is not for complaints against individuals. For complaints about individuals Policy GF (Local) will be followed.

PUBLIC COMPLAINTS GF(LOCAL)Complaints for which other resolution procedures are provided shall be directed first through those channels before addressing the Board under this policy. [see (LEGAL) and/or (LOCAL) text at codes DGBA, EFA, FB, FMA, FNG, FOA, FOD; for complaints against peace officers, see CKE (LEGAL)]

PRESENTATIONS In most circumstances, citizens shall be entitled to administrative conferences and informal presentations of the complaint to the Board.

LEVEL ONE Complaint shall initially be discussed with the appropriate administrator within 15 calendar days of the event or action that is the subject of the complaint.

LEVEL TWO If the complaint is not resolved, the citizen may request a conference with the Superintendent or designee. Prior to or at the conference with the Superintendent or designee, the citizen shall submit a written complaint that includes a description of the complaint, the solution sought, and the date of the conferences with the administrator.

LEVEL THREE If the outcome of the conference with the Superintendent or designee is not to the citizen's satisfaction, the citizen may submit to the Superintendent a written request to place the matter on the agenda.

The Superintendent shall inform the citizen of the date, time, and place of the meeting. The Board President shall establish a reasonable time limit for complaint presentations. The Board shall listen to the citizen's complaint and take whatever action it deems appropriate. The lack of official action by the Board upholds the administrative decision at Level Two. Announcing a decision in the complainant's presence constitutes communication of the decision.

CLOSED MEETING If the complaint involves complaints or charges about an employee, it will be heard by the Board in closed meeting unless the employee complained about requests it to be public.

INFORMATION

November 9, 2020

**SUBJECT: Curriculum and Student Achievement –
Special Programs Update**

**PRESENTED BY: Cathy L. Lauer, Ph.D.
Jane Dwyer**

BACKGROUND INFORMATION

The district has many special programs in operation. Ms. Dwyer coordinates the 504, Dyslexia, ESL and GT programs for the district.

ADMINISTRATIVE CONSIDERATION

The Administration will review the information and make a recommendation to the Board.

ADMINISTRATIVE CONSIDERATION/BOARD ACTION REQUESTED

Review the information presented and discuss any item(s) requiring clarification.

Special Programs Summary

11/09/2020

Gifted and Talented Program

CAMPUS	STUDENTS	ACTIVITIES	MEET	STAFF
Elementary	19	<p>First Semester: “Genius Hour” - Independent research projects. Push-in services from GT Coordinator once a week</p> <p>Second Semester: Spring into Science Family Night – TBD UT Explore Field Trip UIL Meet “Genius Hour” - Independent research projects. Push-in services from GT Coordinator once a week</p>	<p>All teachers K-4 are GT 30 hour trained.</p> <p>Served by a GT push-in program by the GT campus coordinator once a week for one hour. Also serviced in the classroom by core content area teacher(s). Teachers will be supported by the GT coordinator and will post GT activities in their lesson plans.</p>	Brittany Rogers Molly Crosby Marissa Aguilar Courtney Bunch Megan Tobar Sarah Venglar Jenny Bosell Russell Camacho Rebekah Parker Maria Robinson Amy Lynn Olga Montoya Roxanne Villasana
Middle School	36	<p>Self-selected Independent Research projects will be completed throughout the year.</p> <p>Community Project-based units of study will be completed throughout the year.</p> <p>Students will also complete STEM Challenges.</p>	<p>Served by a GT pull out program, every day during Tutorials where students are grouped by grade level. Students are also serviced in the regular classes, and in most cases, Honors courses.</p>	Tabitha Miller Tasha Janicek Carolina Medina Lindsay Martin
High School	30	<p>First semester and second semester: STEM Activities (Pooley) Robotics Brain Builders Wells Fargo College Thinking Khan Academy</p> <p>Honors Committee will facilitate discussions amongst honors teachers and work on increasing rigor and lesson planning as well as instructional strategies that will help build a differentiated honors program and strengthen GT instruction/curriculum and lesson planning.</p> <p>Second Semester: 11th & 12th grade will have career interviews with professionals in their fields of interest.</p>	<p>Meet 1 day a week during tutorials.</p> <p>Meet 4 times per year.</p> <p>Students are also serviced in the classroom where students, in most cases, take CTE, honors, or college credit courses.</p>	Maria Jimenez Gracie Pooley James Watkins Maria Jimenez, Erica Jones, Dawn Bergquist, Honors Course Teachers

Total Identified: 85

- 66 staff members have received the 30 hour Gifted and Talented training.

504 Program (not including students with Dyslexia)

CAMPUS	STUDENTS	STAFF
Elementary	5	Lee Ann Caraway
Middle School	10	Darby Clardy
High School	19	Maria Jimenez
Total:	34	

- Students are served in the general education classroom with individual accommodation plans if needed.

Dyslexia Program

CAMPUS	STUDENTS	PROGRAM	STAFF
Elementary	11	Reading Horizons	Ashley Wynne
Middle School	42	Reading Horizons	Melissa Baethge
High School	27	Monitor Students	Maria Jimenez
Total:	80		

- All elementary teachers have received Reading Horizons training.
- All middle school reading teachers have received Reading Horizons training.
- All high school reading and English language arts teachers have received Reading Horizons training.

ESL (English as a Second Language)

CAMPUS	STUDENTS	MONITOR	PARENT DENIALS	SPECIAL EDUCATION	STAFF
Elementary	99	0	1	16	LeeAnn Caraway
Middle School	66	13	2	18	Georgina Wright
High School	25	14	0	5	Dawn Bergquist
Total:	190	27	3	39	

- Elementary students are served in their classrooms with ESL certified teachers or pulled out to receive services by an ESL teacher.
- Middle school students are served by ESL certified teachers or Spanish-speaking teaching assistant providing support in their classrooms. Newcomers (recent immigrants) or students who need extra assistance receive additional language and literacy instruction in an English Language Support class or during tutorials.
- High school students are served by ESL certified teachers in English Language Arts class and some of the other content area classrooms and/or by an ESL certified teacher during tutorials.
- 55 staff members in the District are ESL certified; one teacher with a bilingual certification.

INFORMATION

November 9, 2020

SUBJECT: Monthly Safety Updates

PRESENTED BY: Cathy L. Lauer, Ph.D.
Jane Dwyer

BACKGROUND INFORMATION

Jane Dwyer will apprise the Board of school safety each month.

ADMINISTRATIVE CONSIDERATION

The Administration will review the information and make a recommendation to the Board.

ADMINISTRATIVE CONSIDERATION/BOARD ACTION REQUESTED

Review the information presented and discuss any item(s) requiring clarification.

Safety Update

November 09, 2020

1. COVID-19 Dashboard

- a. <https://www.nixonsmiley.net/nscisd-covid-19>

2. Training Updates

- a. CPR & First Aid
- b. Stop the Bleed
- c. Guardian Program
- d. National Incident Management System (NIMS)

3. Campus Drill Updates



SUPERINTENDENT’S REPORTS / CONSENT AGENDA

The following items are informational or considered approved by consent unless a vote to amend is taken.

November 9, 2020

SUBJECT: Financial Report /Quarterly Report
Tax Collector’s Report
Minutes of Previous Board Meetings
Cafeteria Report
ADA Report
Calendar of Events

Financial Reports

The Financial Reports for the District reflect the revenue and expenditure through the end of the preceding month of operation.

Tax Collector’s Report

Board Policy requires that the tax collector prepare and submit a written report for all taxes collected during the preceding month.

Thru October 2020 4.09% of the 2020 adjusted tax levy had been collected.

Thru October 2019 7.72% of the 2019 adjusted tax levy had been collected.

Thru October 2018 7.06% of the 2018 adjusted tax levy had been collected.

Minutes of Previous Board Meetings

Minutes of the October 19, 2020, regular meeting are attached.

Cafeteria Report

A copy of the District's Reimbursement Claim for School Lunch and Breakfast Programs will be reviewed at the meeting.

	# Days	Lunches Served	Breakfast Served	Combined claim for month
2020	21	17,188	19,248	\$104,718.96
2019	22	20,902	22,492	\$122,964.65
2018	22	20,242	21,063	\$112,117.44

ADA Report

Each month the District attendance information is processed and reviewed. This information is through the end of the preceding month and is also compared to previous years.

Calendar of Events

The District Administrators will update the Board on campus activities.

1. Nov 20 Student Early Release 12:15 (staff work all day)
2. Nov 23 – 27 Thanksgiving Holidays
3. Governance Camp – Mar 3 – 6 (registration opens Jan 6)

BOARD ACTION REQUESTED

Does anyone request to pull any items from the consent agenda for discussion?

MOTION: “I move that the Board approve the items on the consent agenda.

Motion _____ Second _____ Results _____

Approve/Disapprove

2020-2021 Portfolio Information/Quarterly Report NOV 2020

ASSETS

Maintenance and Operations - Investment Portfolio:

ACC#	Location	Maturity	Rate	Value
089890000-2	Texpool - Local Maint.	Anytime	0.13%	\$7,808,282.36
10030077	TASB Liqu. Corp. (LoneStar)	Anytime	0.18%	\$997.54
089890000-1	Texpool -Student Act.	Anytime	0.13%	\$40,400.46
AS06871	UBS	Varies	0.01%	\$202,549.29
5777-7508	LPL	Varies	1.35%-7.19%	\$18,141,202.39
16964	Third Coast Bank	24-Jun-21	0.55%	\$257,459.25
17015	Third Coast Bank	28-Nov-21	0.55%	\$15,869.64
15784	Third Coast Bank	05-Nov-21	0.55%	\$26,351.40
M&O Total:				\$26,493,112.33

Interest and Sinking Account:

89890000-3	Texpool I&S-Tax Rev	Anytime	0.13%	\$1,657,340.08
M&O + I&S Total:				\$28,150,452.41

Heritage Bank Checking Accounts:

9000143	Local Maintenance	Current Balance:	\$996,353.71
9000224	Activity Account	Current Balance:	\$193,985.17
9000534	I&S Tax Revenue	Current Balance:	\$253,146.54
Checking Total			\$1,443,485.42
M&O + I&S+ Checking :			\$29,593,937.83

Last month:
\$28,022,051.72
Last year:
\$25,950,156.23
Due from state:
\$201,178.92

Construction Accounts:

089890000-4	Texpool	Anytime	0.13%	\$18.99
7948-1852	LPL	Varies	0.01%	\$345,686.60
9000143	Local Maintenance	Anytime	Current Balance:	\$18,237.11
Construction Total				\$363,942.70
M&O + I&S+ Checking + Construction =Total Current Assets:				\$29,957,880.53

ANTICIPATED REVENUE

	Foundation Payment Received	Payment scheduled:	Available School Fund Received*
2019-20 Settle up	\$0.00	\$125,569.00	
September 20	\$1,987,511.00	\$1,987,511.00	\$15,277.00
October 20	\$1,544,958.00	\$1,544,958.00	\$30,927.00
November 20	\$0.00	\$0.00	\$0.00
December 20	\$0.00	\$0.00	\$0.00
January 21	\$0.00	\$0.00	\$0.00
February 21	\$0.00	\$0.00	\$0.00
March 21	\$0.00	\$0.00	\$0.00
April 21	\$0.00	\$0.00	\$0.00
May 21	\$0.00	\$0.00	\$0.00
June 21	\$0.00	\$0.00	\$0.00
July 21	\$0.00	\$0.00	\$0.00
August 21	\$0.00	\$884,221.00	\$0.00
Total to Date:	\$3,532,469.00		\$46,204.00
Total Projected:		\$4,416,690.00	\$0.00
Total Received to date:	\$3,532,469.00		\$46,204.00

*The Texas Legislature sets an amount that will be available for expenditures from the Available School Fund each school year. Based on this estimate and after deducting the required amounts for textbooks, textbook administration, and Permanent School fund administration, the per capita apportionment rate is set as a dollar amount per student to be issued to schools.

CASH PORTFOLIO MONTHLY BALANCE

	2014-2015	2015-16	2016-17	2017-18	2018-19	2019-20	2020-21
SEP	13,624,001.31	25,184,549.99	20,760,366.22	22,565,793.22	21,816,937.38	22,491,873.52	27,396,616.15
OCT	15,600,193.92	24,100,001.18	24,015,847.87	23,296,405.02	22,400,538.42	23,316,267.66	28,022,051.72
NOV	16,487,238.83	23,571,409.24	25,341,868.32	23,677,241.78	23,192,672.61	25,950,156.23	29,593,937.83
DEC	16,973,037.77	24,672,067.92	25,379,348.38	23,867,212.46	22,920,477.21	25,637,342.02	
JAN	17,944,344.48	24,623,327.83	25,051,947.18	23,635,655.32	23,151,418.52	25,377,638.72	
FEB	30,997,977.85	28,731,982.64	28,976,079.29	28,158,696.49	27,234,715.55	31,788,141.22	
MAR	29,631,158.95	28,545,859.63	27,647,658.24	26,889,903.97	26,465,685.24	30,897,187.42	
APR	28,726,925.27	27,611,281.64	26,891,592.15	26,401,336.47	25,786,489.38	31,086,329.25	
MAY	28,512,407.07	26,525,987.46	26,128,653.63	25,266,753.47	25,455,802.53	30,467,442.12	
JUN	27,864,781.76	25,222,523.53	25,375,674.49	23,945,307.06	24,842,318.87	29,637,351.84	
JUL	26,862,948.51	23,713,942.05	24,126,605.91	23,835,470.42	23,982,458.55	28,536,558.15	
AUG	25,939,173.83	22,820,599.70	23,569,155.42	22,142,440.80	23,694,248.82	28,287,218.70	

Board Report
 Recap Comparison of Revenue to Budget
 NIXON-SMILEY CISD
 As of November

	Estimated Revenue (Budget)	Revenue Realized Current/Next	Revenue Realized To Date	Revenue Balance	Percent Realized
199 / 1 GENERAL OPERATING FUND	13,174,411.00	-2,208,790.18	-4,409,619.69	8,764,791.31	33.47%
211 / 0 CG ROLL FWD REVENUE (TTLI 1003	6,575.08	.00	.00	6,575.08	.00%
211 / 1 ESEA TITLE I-REGULAR	329,669.00	.00	.00	329,669.00	.00%
224 / 1 IDEA-PART B FORMULA	210,982.00	.00	.00	210,982.00	.00%
225 / 1 IDEA-PART B, PRESCHOOL	5,352.00	.00	.00	5,352.00	.00%
240 / 1 FOOD SERVICE	1,037,767.00	-113,581.00	-116,432.26	921,334.74	11.22%
242 / 1 SUMMER FEEDING PROG.DEPT.HUMAN	.00	.00	.00	.00	.00%
255 / 0 TPTR	7,567.46	.00	.00	7,567.46	.00%
255 / 1 TPTR	38,674.00	.00	.00	38,674.00	.00%
263 / 1 TITLE III ESL	18,172.00	.00	.00	18,172.00	.00%
266 / 1 ESSER GRANT	257,273.00	.00	-1,327.93	255,945.07	.52%
270 / 1 TITLE VI B-RURAL & LOW INCOME	23,736.00	.00	.00	23,736.00	.00%
276 / 0 INSTRUCTIONAL CONTINUITY GRANT	10,500.00	.00	.00	10,500.00	.00%
289 / 1 SAFETY/SUMMER SCHOOL-LEP	23,691.00	.00	.00	23,691.00	.00%
410 / 1 TEXTBOOKS	227,602.51	-19,251.35	-19,251.35	208,351.16	8.46%
429 / 0 TECHNOLOGY LENDING	31,313.50	.00	.00	31,313.50	.00%
429 / 1 TECH/MATH/SAFETY	.00	.00	-200.00	-200.00	.00%
458 / 1 DAEP	470,621.04	.00	-254,034.83	216,586.21	53.98%
462 / 0 POWER UP GRANT	.00	.00	.00	.00	.00%
616 / 1 CONSTRUCTION	.00	-3.08	-6.06	-6.06	.00%
711 / 1 RENTAL PROPERTIES	.00	-2,600.00	-5,200.00	-5,200.00	.00%
Total 5000 Revenues	15,873,906.59	-2,344,225.61	-4,806,072.12	11,067,834.47	30.28%
Total 7000 Revenues	.00	.00	.00	.00	.00%
Total Revenues	15,873,906.59	-2,344,225.61	-4,806,072.12	11,067,834.47	30.28%

Board Report
 Recap Comparison of Expenditures and Encumbrances to Budget
 NIXON-SMILEY CISD
 As of November

	Budget	Encumbrance YTD	Expenditure YTD	Current/Next Expenditure	Balance	Percent Expended
199 / 1 GENERAL OPERATING FUND	-14,912,678.00	88,935.48	2,399,548.55	972,751.10	-12,424,193.97	16.09%
211 / 0 CG ROLL FWD REVENUE (TTLI 1003	-6,575.08	.00	.00	.00	-6,575.08	-.00%
211 / 1 ESEA TITLE I-REGULAR	-329,669.00	.00	49,328.79	24,575.14	-280,340.21	14.96%
224 / 1 IDEA-PART B FORMULA	-210,982.00	.00	30,728.46	15,261.64	-180,253.54	14.56%
225 / 1 IDEA-PART B, PRESCHOOL	-5,352.00	.00	1,034.96	531.60	-4,317.04	19.34%
240 / 1 FOOD SERVICE	-1,037,767.00	1,717.64	227,254.60	130,492.47	-808,794.76	21.90%
242 / 1 SUMMER FEEDING PROG.DEPT.HUMAN	.00	.00	.00	.00	.00	.00%
255 / 0 TPTR	-7,567.46	.00	1,367.37	1,367.37	-6,200.09	18.07%
255 / 1 TPTR	-38,674.00	.00	4,213.83	1,384.05	-34,460.17	10.90%
263 / 1 TITLE III ESL	-18,172.00	.00	2,238.05	1,104.14	-15,933.95	12.32%
266 / 1 ESSER GRANT	-257,273.00	.00	41,312.49	19,759.88	-215,960.51	16.06%
270 / 1 TITLE VI B-RURAL & LOW INCOME	-23,736.00	.00	3,531.78	1,546.03	-20,204.22	14.88%
276 / 0 INSTRUCTIONAL CONTINUITY GRANT	-10,500.00	.00	.00	.00	-10,500.00	-.00%
289 / 1 SAFETY/SUMMER SCHOOL-LEP	-23,691.00	.00	3,898.41	1,935.84	-19,792.59	16.46%
410 / 1 TEXTBOOKS	-227,602.51	935.00	85,128.10	68,296.60	-141,539.41	37.40%
429 / 0 TECHNOLOGY LENDING	-31,313.50	28,782.00	.00	.00	-2,531.50	-.00%
429 / 1 TECH/MATH/SAFETY	.00	.00	207.45	207.45	207.45	.00%
458 / 1 DAEP	-470,621.04	4,244.58	71,219.36	33,837.17	-395,157.10	15.13%
462 / 0 POWER UP GRANT	-19,960.00	.00	.00	.00	-19,960.00	-.00%
616 / 1 CONSTRUCTION	-255,838.70	.00	12,186.52	2,998.00	-243,652.18	4.76%
711 / 1 RENTAL PROPERTIES	.00	.00	.00	.00	.00	.00%
Total 6000 Expenditures	-17,887,972.29	124,614.70	2,933,198.72	1,276,048.48	-14,830,158.87	16.40%
Total 8000 Expenditures	.00	.00	.00	.00	.00	.00%
Total Expenditures	-17,887,972.29	124,614.70	2,933,198.72	1,276,048.48	-14,830,158.87	16.40%

End of Report

Board Report
 Comparison of Expenditures and Encumbrances to Budget
 NIXON-SMILEY CISD
 As of November

Fund 199 / 1 GENERAL OPERATING FUND

	Budget	Encumbrance YTD	Expenditure YTD	Current/Next Expenditure	Balance	Percent Expended
6000 - EXPENDITURES						
11 - INSTRUCTION						
6100 - PAYROLL COSTS	-7,534,573.00	.00	1,116,251.57	544,705.63	-6,418,321.43	14.82%
6200 - PROFESSNL & CONTRACTED SVS	-372,644.00	5,287.13	129,045.73	18,702.39	-238,311.14	34.63%
6300 - SUPPLIES AND MATERIALS	-520,821.00	49,764.78	107,016.85	23,631.81	-364,039.37	20.55%
6400 - OTHER OPERATING EXPENSES	-62,900.00	588.00	1,268.50	506.50	-61,043.50	2.02%
6600 - CPTL OUTLY LAND BLDG & EQUIP	-74,000.00	6,000.00	.00	.00	-68,000.00	-.00%
Total Function11 INSTRUCTION	-8,564,938.00	61,639.91	1,353,582.65	587,546.33	-7,149,715.44	15.80%
12 - LIBRARY						
6100 - PAYROLL COSTS	.00	.00	.00	.00	.00	.00%
6300 - SUPPLIES AND MATERIALS	-26,150.00	1,111.34	397.07	314.07	-24,641.59	1.52%
6400 - OTHER OPERATING EXPENSES	-400.00	.00	.00	.00	-400.00	-.00%
Total Function12 LIBRARY	-26,550.00	1,111.34	397.07	314.07	-25,041.59	1.50%
13 - CURRICULUM & INSTRUCTIONAL STF						
6100 - PAYROLL COSTS	-3,750.00	.00	.00	.00	-3,750.00	-.00%
6200 - PROFESSNL & CONTRACTED SVS	-97,385.00	.00	.00	.00	-97,385.00	-.00%
6300 - SUPPLIES AND MATERIALS	-15,650.00	.00	.00	.00	-15,650.00	-.00%
6400 - OTHER OPERATING EXPENSES	-84,509.00	4,981.03	6,899.00	449.00	-72,628.97	8.16%
Total Function13 CURRICULUM &	-201,294.00	4,981.03	6,899.00	449.00	-189,413.97	3.43%
21 - INSTRUCTIONAL ADMINISTRATION						
6100 - PAYROLL COSTS	-260,082.00	.00	48,407.27	23,309.56	-211,674.73	18.61%
6200 - PROFESSNL & CONTRACTED SVS	-500.00	.00	.00	.00	-500.00	-.00%
6300 - SUPPLIES AND MATERIALS	-1,950.00	.00	225.75	124.45	-1,724.25	11.58%
6400 - OTHER OPERATING EXPENSES	-6,150.00	.00	940.00	295.00	-5,210.00	15.28%
Total Function21 INSTRUCTIONAL	-268,682.00	.00	49,573.02	23,729.01	-219,108.98	18.45%
23 - CAMPUS ADMINISTRATION						
6100 - PAYROLL COSTS	-754,513.00	.00	118,176.85	57,133.52	-636,336.15	15.66%
6200 - PROFESSNL & CONTRACTED SVS	-500.00	.00	.00	.00	-500.00	-.00%
6300 - SUPPLIES AND MATERIALS	-300.00	.00	.00	.00	-300.00	-.00%
6400 - OTHER OPERATING EXPENSES	-7,550.00	.00	510.00	510.00	-7,040.00	6.75%
Total Function23 CAMPUS ADMINISTRATION	-762,863.00	.00	118,686.85	57,643.52	-644,176.15	15.56%
31 - GUIDANCE AND COUNSELING SVS						
6100 - PAYROLL COSTS	-230,841.00	.00	31,089.15	13,843.48	-199,751.85	13.47%
6200 - PROFESSNL & CONTRACTED SVS	-900.00	.00	900.00	.00	.00	100.00%
6300 - SUPPLIES AND MATERIALS	-1,100.00	100.00	36.74	36.74	-963.26	3.34%
6400 - OTHER OPERATING EXPENSES	-1,050.00	100.00	129.00	.00	-821.00	12.29%
Total Function31 GUIDANCE AND	-233,891.00	200.00	32,154.89	13,880.22	-201,536.11	13.75%
33 - HEALTH SERVICES						
6100 - PAYROLL COSTS	-249,235.00	.00	41,394.90	19,992.26	-207,840.10	16.61%
6200 - PROFESSNL & CONTRACTED SVS	-950.00	138.23	364.56	364.56	-447.21	38.37%
6300 - SUPPLIES AND MATERIALS	-8,015.00	354.91	1,201.93	891.43	-6,458.16	15.00%
6400 - OTHER OPERATING EXPENSES	-812.00	.00	.00	.00	-812.00	-.00%
Total Function33 HEALTH SERVICES	-259,012.00	493.14	42,961.39	21,248.25	-215,557.47	16.59%
34 - PUPIL TRANSPORTATION-REGULAR						
6100 - PAYROLL COSTS	-240,788.00	.00	49,805.20	27,369.15	-190,982.80	20.68%
6200 - PROFESSNL & CONTRACTED SVS	-54,000.00	1,903.00	4,070.63	3,496.63	-48,026.37	7.54%
6300 - SUPPLIES AND MATERIALS	-172,250.00	1,729.71	19,174.54	9,986.32	-151,345.75	11.13%
6400 - OTHER OPERATING EXPENSES	-30,200.00	.00	26,091.00	805.00	-4,109.00	86.39%
6600 - CPTL OUTLY LAND BLDG & EQUIP	-138,000.00	.00	.00	.00	-138,000.00	-.00%

Board Report
Comparison of Expenditures and Encumbrances to Budget
NIXON-SMILEY CISD
As of November

Fund 199 / 1 GENERAL OPERATING FUND

	Budget	Encumbrance YTD	Expenditure YTD	Current/Next Expenditure	Balance	Percent Expended
6000 - EXPENDITURES						
34 - PUPIL TRANSPORTATION-REGULAR						
Total Function34 PUPIL TRANSPORTATION-	-635,238.00	3,632.71	99,141.37	41,657.10	-532,463.92	15.61%
36 - CO-CURRICULAR/EXTRA ACTIVITIES						
6100 - PAYROLL COSTS	-172,877.09	.00	20,599.92	9,713.50	-152,277.17	11.92%
6200 - PROFESSNL & CONTRACTED SVS	-64,650.00	1,256.06	11,301.10	8,231.10	-52,092.84	17.48%
6300 - SUPPLIES AND MATERIALS	-85,123.91	9,493.00	8,230.41	6,828.32	-67,400.50	9.67%
6400 - OTHER OPERATING EXPENSES	-78,150.00	447.01	26,888.26	7,591.58	-50,814.73	34.41%
Total Function36 CO-CURRICULAR/EXTRA	-400,801.00	11,196.07	67,019.69	32,364.50	-322,585.24	16.72%
41 - GENERAL ADMINISTRATION						
6100 - PAYROLL COSTS	-246,049.00	.00	39,245.85	18,921.94	-206,803.15	15.95%
6200 - PROFESSNL & CONTRACTED SVS	-103,568.00	1,150.00	6,494.00	1,044.00	-95,924.00	6.27%
6300 - SUPPLIES AND MATERIALS	-17,400.00	.00	94.99	94.99	-17,305.01	.55%
6400 - OTHER OPERATING EXPENSES	-82,200.00	.00	15,702.00	.00	-66,498.00	19.10%
Total Function41 GENERAL ADMINISTRATION	-449,217.00	1,150.00	61,536.84	20,060.93	-386,530.16	13.70%
51 - PLANT MAINTENANCE & OPERATION						
6100 - PAYROLL COSTS	-657,638.00	.00	102,188.78	52,599.12	-555,449.22	15.54%
6200 - PROFESSNL & CONTRACTED SVS	-836,561.00	4,732.59	89,638.90	47,776.06	-742,189.51	10.72%
6300 - SUPPLIES AND MATERIALS	-248,700.00	196.55	32,484.17	19,502.31	-216,019.28	13.06%
6400 - OTHER OPERATING EXPENSES	-71,739.00	.00	71,139.00	.00	-600.00	99.16%
6600 - CPTL OUTLY LAND BLDG & EQUIP	.00	.00	.00	.00	.00	.00%
Total Function51 PLANT MAINTENANCE &	-1,814,638.00	4,929.14	295,450.85	119,877.49	-1,514,258.01	16.28%
52 - SECURITY SERVICES						
6100 - PAYROLL COSTS	-26,940.00	.00	4,954.13	2,329.81	-21,985.87	18.39%
6200 - PROFESSNL & CONTRACTED SVS	-18,650.00	.00	925.00	925.00	-17,725.00	4.96%
6300 - SUPPLIES AND MATERIALS	-28,000.00	1,311.73	1,855.00	.00	-24,833.27	6.62%
6400 - OTHER OPERATING EXPENSES	-16,000.00	.00	.00	.00	-16,000.00	-.00%
Total Function52 SECURITY SERVICES	-89,590.00	1,311.73	7,734.13	3,254.81	-80,544.14	8.63%
53 - DATA PROCESSING SERVICES						
6100 - PAYROLL COSTS	-387,175.00	.00	62,251.81	29,826.16	-324,923.19	16.08%
6200 - PROFESSNL & CONTRACTED SVS	-113,110.00	219.45	55,119.17	1,352.15	-57,771.38	48.73%
6300 - SUPPLIES AND MATERIALS	-18,950.00	684.93	2,068.45	1,216.20	-16,196.62	10.92%
6400 - OTHER OPERATING EXPENSES	-7,050.00	365.00	554.00	213.00	-6,131.00	7.86%
Total Function53 DATA PROCESSING	-526,285.00	1,269.38	119,993.43	32,607.51	-405,022.19	22.80%
61 - COMMUNITY SERVICES						
6100 - PAYROLL COSTS	-92,579.00	.00	16,811.67	8,032.01	-75,767.33	18.16%
6200 - PROFESSNL & CONTRACTED SVS	-96,250.00	.00	40,030.00	.00	-56,220.00	41.59%
6300 - SUPPLIES AND MATERIALS	-9,000.00	997.50	1,337.08	1,092.58	-6,665.42	14.86%
6400 - OTHER OPERATING EXPENSES	-850.00	.00	128.00	120.00	-722.00	15.06%
Total Function61 COMMUNITY SERVICES	-198,679.00	997.50	58,306.75	9,244.59	-139,374.75	29.35%
71 - BOND PAYMENT						
6500 - DEBT SERVICE	-26,000.00	.00	.00	.00	-26,000.00	-.00%
Total Function71 BOND PAYMENT	-26,000.00	.00	.00	.00	-26,000.00	-.00%
81 - CONSTRUCTION						
6500 - DEBT SERVICE	.00	.00	.00	.00	.00	.00%
Total Function81 CONSTRUCTION	.00	.00	.00	.00	.00	.00%
91 - CONT INSTR SERV BETWEEN SCHOOL						
6200 - PROFESSNL & CONTRACTED SVS	.00	.00	.00	.00	.00	.00%
Total Function91 CONT INSTR SERV BETWEEN	.00	22	.00	.00	.00	.00%

Check Nbr	Check Date	Vend Nbr	Payee	Organization	PO Nbr Fnd-Fnc-Obj.-So-Org-Prog	Invoice Nbr	Typ Cd	Reason	Amount	EFT
043998	10-16-2020	00042	DUSSETTSCHLEGER'S I	PLANT MAINT. & OP	210439	12675	C	HVAC REPAIR	3,720.00	N
					199-51-6299.00-905-199000					
				PLANT MAINT. & OP	210439	12674	C	HVAC REPAIR	390.00	N
					199-51-6299.00-905-199000					
								Check 043998 Total:	4,110.00	
044049	10-23-2020	00042	DUSSETTSCHLEGER'S I	PLANT MAINT. & OP	210510	12677	C	HVAC REPAIR	619.00	N
					199-51-6299.00-905-199000					
				PLANT MAINT. & OP	210517	12678	C	HVAC REPAIR	836.00	N
					199-51-6299.00-905-199000					
				PLANT MAINT. & OP	210576	12680	C	HVAC REPAIR	1,238.00	N
					199-51-6299.00-905-199000					
				PLANT MAINT. & OP	210510	12676	C	HVAC REPAIR	1,070.00	N
					199-51-6299.00-905-199000					
								Check 044049 Total:	3,763.00	
								Vendor 00042 Total:	7,873.00	
044044	10-23-2020	00054	CPL RETAIL ENERGY	PLANT MAINT. & OP	210547	9/10-10/9/20	C	Electric Bill-Oct	443.39	N
					199-51-6259.02-905-199000					
044043	10-23-2020	00060	CITY UTILITIES	PLANT MAINT. & OP	210545	8/27-9/28/20	C	Water Bill-Sept	3,745.89	N
					199-51-6259.00-905-199000					
043999	10-16-2020	00094	ESC REGION 13	DISTRICT WIDE	210424	239487	C	Managed Services	3,325.00	N
					199-11-6239.40-999-111400					
044008	10-16-2020	00105	HILL COUNTRY DAIRIE CAFETERIA		210423	414028209	C	FOOD	382.14	N
					240-35-6341.00-904-199000					
			CAFETERIA		210363	414027914	C	FOOD	260.18	N
					240-35-6341.00-904-199000					
			CAFETERIA		210364	414027913	C	FOOD	275.28	N
					240-35-6341.00-904-199000					
			CAFETERIA		210474	414028610	C	FOOD	461.70	N
					240-35-6341.00-904-199000					
			CAFETERIA		210422	414028208	C	FOOD	120.80	N
					240-35-6341.00-904-199000					
								Check 044008 Total:	1,500.10	
044060	10-23-2020	00105	HILL COUNTRY DAIRIE CAFETERIA		210530	414029315	C	FOOD	199.20	N
					240-35-6341.00-904-199000					
			CAFETERIA		210495	414028909	C	FOOD	291.25	N
					240-35-6341.00-904-199000					
			CAFETERIA		210497	414028913	C	FOOD	506.42	N
					240-35-6341.00-904-199000					
			CAFETERIA		210531	414029313	C	FOOD	521.52	N
					240-35-6341.00-904-199000					
								Check 044060 Total:	1,518.39	
044091	10-30-2020	00105	HILL COUNTRY DAIRIE CAFETERIA		210579	414029607	C	FOOD	260.18	N
					240-35-6341.00-904-199000					
			CAFETERIA		210580	414029611	C	FOOD	461.70	N
					240-35-6341.00-904-199000					
								Check 044091 Total:	721.88	
								Vendor 00105 Total:	3,740.37	
044111	10-30-2020	00121	TEXAS DEPARTMENT	N-S MIDDLE SCHOO	210647	CRS202008198922	C	Clearinghouse Record Retri	1.00	N
					199-11-6499.01-041-111000					
				N-S MIDDLE SCHOO	210647	CRS202009200888	C	Clearinghouse Record Retri	3.00	N
					199-11-6499.01-041-111000					
								Check 044111 Total:	4.00	
								Vendor 00121 Total:	4.00	

Check Nbr	Check Date	Vend Nbr	Payee	Organization	PO Nbr Fnd-Fnc-Obj-So-Org-Prog	Invoice Nbr	Typ Cd	Reason	Amount	EFT
044006	10-16-2020	00129	GULF COAST PAPER C	N-S HIGH SCHOOL	210453	1941050	C	COPY PAPER	439.20	N
					199-11-6399.01-001-111000					
				N-S MIDDLE SCHOO	210453	1941050	C	COPY PAPER	439.20	N
					199-11-6399.01-041-111000					
				NIXON-SMILEY ELE	210453	1941050	C	COPY PAPER	439.20	N
					199-11-6399.01-101-111000					
				N-S MIDDLE SCHOO	210479	1941045	C	CUSTODIAL SUPPLIES - M	14.04	N
					199-51-6319.19-041-199000					
				N-S MIDDLE SCHOO	210479	1941053	C	CUSTODIAL SUPPLIES - M	453.29	N
					199-51-6319.19-041-199000					
				N-S MIDDLE SCHOO	210479	1941054	C	CUSTODIAL SUPPLIES - M	349.49	N
					199-51-6319.19-041-199000					
				DISTRICT WIDE	210477	1941055	C	CUSTODIAL SUPPLIES - DI	73.30	N
					199-51-6319.20-999-199000					
				DISTRICT WIDE	210477	1941058	C	CUSTODIAL SUPPLIES - DI	56.65	N
					199-51-6319.20-999-199000					
				DISTRICT WIDE	210477	1940960	C	CUSTODIAL SUPPLIES - DI	32.80	N
					199-51-6319.20-999-199000					
				DISTRICT WIDE	210477	1941059	C	CUSTODIAL SUPPLIES - DI	168.39	N
					199-51-6319.20-999-199000					
				N-S HIGH SCHOOL	210480	1941048	C	CUSTODIAL SUPPLIES - H	98.28	N
					199-51-6319.21-001-199000					
				N-S HIGH SCHOOL	210480	1941056	C	CUSTODIAL SUPPLIES - H	1,819.10	N
					199-51-6319.21-001-199000					
				NIXON-SMILEY ELE	210478	1941047	C	CUSTODIAL SUPPLIES - E	42.12	N
					199-51-6319.22-101-199000					
				NIXON-SMILEY ELE	210478	1941049	C	CUSTODIAL SUPPLIES - E	63.24	N
					199-51-6319.22-101-199000					
				NIXON-SMILEY ELE	210478	1941051	C	CUSTODIAL SUPPLIES - E	311.65	N
					199-51-6319.22-101-199000					
				NIXON-SMILEY ELE	210478	1941057	C	CUSTODIAL SUPPLIES - E	781.67	N
					199-51-6319.22-101-199000					
								Check 044006 Total:	5,581.62	
044055	10-23-2020	00129	GULF COAST PAPER C	DISTRICT WIDE		1932882	M	OUT OF STOCK	-29.61	N
						199-51-6319.20-999-199000				
				CAFETERIA	210499	1941046	C	GENERAL SUPPLIES	39.61	N
					240-35-6399.00-904-199000					
				CAFETERIA	210500	1941052	C	GENERAL SUPPLIES	300.99	N
					240-35-6399.00-904-199000					
								Check 044055 Total:	310.99	
044089	10-30-2020	00129	GULF COAST PAPER C	N-S MIDDLE SCHOO	210615	1949143	C	CUSTODIAL SUPPLIES - M	459.11	N
						199-51-6319.19-041-199000				
				N-S MIDDLE SCHOO	210615	1949144	C	CUSTODIAL SUPPLIES - M	392.69	N
						199-51-6319.19-041-199000				
				DISTRICT WIDE	210618	1949146	C	CUSTODIAL SUPPLIES - DI	72.04	N
						199-51-6319.20-999-199000				
				DISTRICT WIDE	210618	1949139	C	CUSTODIAL SUPPLIES - DI	84.16	N
						199-51-6319.20-999-199000				
				DISTRICT WIDE	210618	1949136	C	CUSTODIAL SUPPLIES - DI	51.64	N
						199-51-6319.20-999-199000				
				DISTRICT WIDE	210618	1949141	C	CUSTODIAL SUPPLIES - DI	430.00	N
						199-51-6319.20-999-199000				
				N-S HIGH SCHOOL	210616	1949404	C	CUSTODIAL SUPPLIES - H	47.37	N
						199-51-6319.21-001-199000				

Check Nbr	Check Date	Vend Nbr	Payee	Organization	PO Nbr Fnd-Fnc-Obj.	Invoice Nbr So-Org-Prog	Typ Cd	Reason	Amount	EFT
				N-S HIGH SCHOOL	210616	1949148	C	CUSTODIAL SUPPLIES - H	1,142.82	N
					199-51-6319.21-001-199000					
				NIXON-SMILEY ELE	210614	1949137	C	CUSTODIAL SUPPLIES - E	51.64	N
					199-51-6319.22-101-199000					
				NIXON-SMILEY ELE	210614	1949138	C	CUSTODIAL SUPPLIES - E	51.64	N
					199-51-6319.22-101-199000					
				NIXON-SMILEY ELE	210614	1949147	C	CUSTODIAL SUPPLIES - E	309.26	N
					199-51-6319.22-101-199000					
				NIXON-SMILEY ELE	210614	1949145	C	CUSTODIAL SUPPLIES - E	375.52	N
					199-51-6319.22-101-199000					
				FISCAL AGENT SSA	210617	1949140	C	CUSTODIAL SUPPLIES - D	106.42	N
					458-51-6319.00-751-128000					
								Check 044089 Total:	3,574.31	
								Vendor 00129 Total:	9,466.92	
044013	10-16-2020	00141	LABATT FOOD SERVIC	NIXON-SMILEY ELE	210263	09226859	C	REWARDS PBIS	70.30	N
					199-11-6499.01-101-199000					
				CAFETERIA	210365	10047202	C	FOOD	756.00	N
					240-35-6341.00-904-199000					
				CAFETERIA	210359	10013275	C	FOOD & NON-FOOD	1,325.16	N
					240-35-6341.00-904-199000					
				CAFETERIA	210456	10081923	C	FOOD & NON-FOOD	1,026.19	N
					240-35-6341.00-904-199000					
				CAFETERIA	210489	10132602	C	FOOD & NON-FOOD	3,600.23	N
					240-35-6341.00-904-199000					
				CAFETERIA	210491	10132605	C	FOOD & NON-FOOD	2,861.43	N
					240-35-6341.00-904-199000					
				CAFETERIA	210414	10064856	C	FOOD & NON-FOOD	2,943.44	N
					240-35-6341.00-904-199000					
				CAFETERIA	210360	10013276	C	FOOD & NON-FOOD	3,427.48	N
					240-35-6341.00-904-199000					
				CAFETERIA	210445	10081924	C	FOOD & NON-FOOD	2,907.57	N
					240-35-6341.00-904-199000					
				CAFETERIA	210415	10064859	C	FOOD & NON-FOOD	2,262.70	N
					240-35-6341.00-904-199000					
				CAFETERIA	210490	10132603	C	FFVP ELEMENTARY	705.41	N
					240-35-6341.50-904-199000					
				CAFETERIA	210413	10064857	C	FFVP ELEMENTARY	978.64	N
					240-35-6341.50-904-199000					
				CAFETERIA	210445	10081924	C	FOOD & NON-FOOD	31.40	N
					240-35-6342.00-904-199000					
				CAFETERIA	210489	10132602	C	FOOD & NON-FOOD	87.71	N
					240-35-6342.00-904-199000					
				CAFETERIA	210456	10081923	C	FOOD & NON-FOOD	247.14	N
					240-35-6342.00-904-199000					
				CAFETERIA	210359	10013275	C	FOOD & NON-FOOD	170.37	N
					240-35-6342.00-904-199000					
				CAFETERIA	210360	10013276	C	FOOD & NON-FOOD	374.46	N
					240-35-6342.00-904-199000					
				CAFETERIA	210415	10064859	C	FOOD & NON-FOOD	153.53	N
					240-35-6342.00-904-199000					
				CAFETERIA	210491	10132605	C	FOOD & NON-FOOD	132.56	N
					240-35-6342.00-904-199000					
				CAFETERIA	210414	10064856	C	FOOD & NON-FOOD	200.61	N
					240-35-6342.00-904-199000					

Check Nbr	Check Date	Vend Nbr	Payee	Organization	PO Nbr Fnd-Fnc-Obj.-So-Org-Prog	Invoice Nbr So-Obj-So-Org-Prog	Typ Cd	Reason	Amount	EFT
				CAFETERIA	210490	10132603	C	FFVP ELEMENTARY	71.07	N
					240-35-6342.50-904-199000					
								Check 044013 Total:	24,333.40	
044063	10-23-2020	00141	LABATT FOOD SERVIC	NIXON-SMILEY ELE	210211	09107967	C	WATER	42.48	N
					199-11-6399.00-101-111000					
				NIXON-SMILEY ELE	210198	09175943	C	PBIS REWARDS	128.85	N
					199-11-6499.01-101-199000					
				CAFETERIA	210525	10159904	C	FOOD & NON-FOOD	2,563.02	N
					240-35-6341.00-904-199000					
				CAFETERIA	210526	10159905	C	FOOD & NON-FOOD	4,019.99	N
					240-35-6341.00-904-199000					
				CAFETERIA	210526	10159905	C	FOOD & NON-FOOD	183.70	N
					240-35-6342.00-904-199000					
				CAFETERIA	210525	10159904	C	FOOD & NON-FOOD	384.95	N
					240-35-6342.00-904-199000					
								Check 044063 Total:	7,322.99	
044095	10-30-2020	00141	LABATT FOOD SERVIC	CAFETERIA	210559	10201725	C	FOOD & NON-FOOD	3,306.21	N
					240-35-6341.00-904-199000					
				CAFETERIA	210560	10201731	C	FOOD	194.25	N
					240-35-6341.00-904-199000					
				CAFETERIA	210561	10201730	C	FOOD & NON-FOOD	3,788.50	N
					240-35-6341.00-904-199000					
				CAFETERIA	210558	10201726	C	FOOD	116.55	N
					240-35-6341.00-904-199000					
				CAFETERIA	210557	10201727	C	FFVP ELEMENTARY	698.30	N
					240-35-6341.50-904-199000					
				CAFETERIA	210561	10201730	C	FOOD & NON-FOOD	232.04	N
					240-35-6342.00-904-199000					
				CAFETERIA	210559	10201725	C	FOOD & NON-FOOD	301.72	N
					240-35-6342.00-904-199000					
								Check 044095 Total:	8,637.57	
								Vendor 00141 Total:	40,293.96	
044065	10-23-2020	00160	MCGRAW-HILL SCHOO	N-S HIGH SCHOOL	210076	114965969001	C	MUSIC APPRECIATION CU	62.43	N
					199-11-6399.00-001-111000					
				N-S HIGH SCHOOL	210076	114965969001	C	MUSIC APPRECIATION CU	450.00	N
					199-11-6399.00-001-130000					
				N-S MIDDLE SCHOO	210328	115246460001	C	7th Grade SS Student Licen	729.60	N
					410-11-6399.00-041-111000					
								Check 044065 Total:	1,242.03	
								Vendor 00160 Total:	1,242.03	
044112	10-30-2020	00178	ONEOK, INC.	PLANT MAINT. & OP	210646	9/15-10/14/20	C	Gas Bill	111.24	N
					199-51-6259.03-905-199000					
044072	10-23-2020	00205	SCHOOL SPECIALTY, I	N-S MIDDLE SCHOO	210508	380103640905	C	TEACHER SUPPLIES	816.76	N
					199-11-6399.00-041-111000					
044064	10-23-2020	00219	LOWE'S PAY & SAVE I	CAFETERIA	210532	20101-203-1-1-3	C	FOOD	13.33	N
					240-35-6341.00-904-199000					
044100	10-30-2020	00219	LOWE'S PAY & SAVE I	FISCAL AGENT SSA	210232	2010152222250	C	water for PACE and DAEP	25.96	N
					458-11-6399.00-751-128000					
								Vendor 00219 Total:	39.29	

Check Nbr	Check Date	Vend Nbr	Payee	Organization	PO Nbr Fnd-Fnc-Obj.-So-Org-Prog	Invoice Nbr	Typ Cd	Reason	Amount	EFT
044029	10-16-2020	00225	TASB, INC.	SCHOOL BOARD	210485 600395 199-41-6211.00-702-199000		C	Board Policy Update	44.00	N
003846	10-23-2020	00261	CLAIMS ADMN SERVIC	BUSINESS OFFICE	110-03 753-43-6299.00-750-199000		D	MEMORIAL HOSPITAL	153.26	N
003847	10-23-2020	00261	CLAIMS ADMN SERVIC	BUSINESS OFFICE	110-03 753-43-6299.00-750-199000		D	GONZALES HEALTHCARE	110.00	N
003848	10-23-2020	00261	CLAIMS ADMN SERVIC	BUSINESS OFFICE	110-03 753-43-6299.00-750-199000		D	MEMORIAL HOSPITAL	339.85	N
011000	10-20-2020	00261	CLAIMS ADMN SERVIC	BUSINESS OFFICE	110-00 753-43-6299.00-750-199000		D	PLAN PERIOD 04-05	1.00	N
				BUSINESS OFFICE	110-00 753-43-6299.00-750-199000		D	PLAN PERIOD 08-09	1.00	N
				BUSINESS OFFICE	110-00 753-43-6299.00-750-199000		D	PLAN PERIOD 09-10	1.00	N
				BUSINESS OFFICE	110-00 753-43-6299.00-750-199000		D	PLAN PERIOD 11-12	1.00	N
				BUSINESS OFFICE	110-00 753-43-6299.00-750-199000		D	PLAN PERIOD 02-03	2.00	N
				BUSINESS OFFICE	110-00 753-43-6299.00-750-199000		D	PLAN PERIOD 13-14	3.00	N
				BUSINESS OFFICE	110-00 753-43-6299.00-750-199000		D	PLAN PERIOD 03-04	4.00	N
				BUSINESS OFFICE	110-00 753-43-6299.00-750-199000		D	PLAN PERIOD 10-11	5.00	N
				BUSINESS OFFICE	110-00 753-43-6299.00-750-199000		D	PLAN PERIOD 14-15	11.00	N
				BUSINESS OFFICE	110-00 753-43-6299.00-750-199000		D	PLAN PERIOD 16-17	27.00	N
				BUSINESS OFFICE	110-00 753-43-6299.00-750-199000		D	PLAN PERIOD 15-16	85.00	N
				BUSINESS OFFICE	110-00 753-43-6299.00-750-199000		D	PLAN PERIOD 17-18	94.00	N
				BUSINESS OFFICE	110-00 753-43-6299.00-750-199000		D	PLAN PERIOD 19-20	135.00	N
				BUSINESS OFFICE	110-00 753-43-6299.00-750-199000		D	PLAN PERIOD 18-19	147.00	N
Check 011000 Total:									517.00	
Vendor 00261 Total:									1,120.11	
044005	10-16-2020	00295	GRAINGER, INC	PLANT MAINT. & OP	210451 9680051894 199-51-6319.01-905-199000		C	BUILDING SUPPLIES	180.00	N
044054	10-23-2020	00295	GRAINGER, INC	PLANT MAINT. & OP	210568 9688479329 199-51-6319.01-905-199000		C	BUILDING SUPPLIES	120.00	N
044087	10-30-2020	00295	GRAINGER, INC	PLANT MAINT. & OP	210623 9695851361 199-51-6319.01-905-199000		C	TOILET	156.00	N
				PLANT MAINT. & OP	210587 9693643976 199-51-6319.01-905-199000		C	AIR FILTERS	306.36	N
				PLANT MAINT. & OP	210620 9393969652 199-51-6319.01-905-199000		C	BUILDING SUPPLIES	247.50	N
				PLANT MAINT. & OP	210620 9696167841 199-51-6319.01-905-199000		C	BUILDING SUPPLIES	144.68	N
Check 044087 Total:									854.54	
Vendor 00295 Total:									1,154.54	

Check Nbr	Check Date	Vend Nbr	Payee	Organization	PO Nbr Fnd-Fnc-Obj.-So-Obj-Prgr	Invoice Nbr So-Obj-Prgr	Typ Cd	Reason	Amount	EFT
044028	10-16-2020	00396	SCHULENBURG PRINT	SUPERINTENDENT'	210471 199-41-6399.00-701-199000	741265-0	C	Dr. Lauer's Toner	75.99	N
044108	10-30-2020	00396	SCHULENBURG PRINT	BUSINESS OFFICE	210648 199-41-6399.00-750-199000	742639-0	C	Notary Stamp	19.00	N
Vendor 00396 Total:									94.99	
044056	10-23-2020	00537	GVEC	PLANT MAINT. & OP	210546 199-51-6259.02-905-199000	9/7-10/07/20	C	Electric Bill - Oct	86.00	N
044068	10-23-2020	00543	NIXON INSURANCE AG	BUSINESS OFFICE	210540 199-53-6495.00-750-199000	CINDY LOTT	C	Renew Notary	71.00	N
				BUSINESS OFFICE	210541 199-53-6495.00-750-199000	ZEPEDA	C	Notary Renewal-Yvonne Zep	71.00	N
				BUSINESS OFFICE	210543 199-53-6495.00-750-199000	MAGGIE GAYTAN	C	Notary Renewal- Maggie Ga	71.00	N
Check 044068 Total:									213.00	
Vendor 00543 Total:									213.00	
044016	10-16-2020	00590	MATHESON TRI-GAS	N-S HIGH SCHOOL	210452 199-11-6299.70-001-122000	22388114	C	CYLINDER RENTAL	392.60	N
044035	10-23-2020	00617	A-1 SHINER FIRE & SA	PLANT MAINT. & OP	210528 199-51-6299.00-905-199000	13217	C	SERVICE CALL - CARBON	255.00	N
044047	10-23-2020	00687	ALBERTO DEHOYOS	ATHLETICS	210552 199-36-6299.11-860-191000	VB 10/16	C	VB Official 10/16 Luling	140.00	N
044113	10-30-2020	00751	TEXAS MULTI-CHEM, L	ATHLETICS	210549 199-36-6291.00-860-191000	100466	C	Athletic Field Maint-All Field	3,831.10	N
044027	10-16-2020	00790	SCHOOL NURSE SUPP	NIXON-SMILEY ELE	210262 199-33-6399.00-101-199000	0811438-IN	C	MEDICAL SUPPLIES	182.92	N
005005	10-23-2020	00826	CARD SERVICE CENT	M.S. SNACKS-FACU	210428 461-36-6399.00-929-199000	250/LOWES	C	RESTOCK TEACHER SNA	63.89	N
				M.S. SNACKS-FACU	210428 461-36-6399.00-929-199000	250/LOWES	C	RESTOCK TEACHER SNA	33.96	N
				FFA	210494 865-00-2190.00-958-100000	243/HEB	C	AREA LEADERSHIP CONF	79.46	N
Check 005005 Total:									177.31	
043993	10-16-2020	00826	CARD SERVICE CENT	EXTRA-CURRICULA	210157 199-36-6399.06-861-191000	SO159404	C	HOOPS - BAND SHOPPE	279.05	N
044041	10-23-2020	00826	CARD SERVICE CENT	DISTRICT WIDE	110-02 199-00-5752.00-000-100000	20-21 TICKETS	C	BOARD MEMBER TICKETS	656.45	N
				N-S HIGH SCHOOL	210326 199-11-6399.00-001-111000	185/LOWES	C	WATER - CAMPUS	19.47	N
				N-S MIDDLE SCHOO	210062 199-11-6399.00-041-111000	177/GENERATION	C	SUPPLEMENTAL TEKS	95.00	N
				N-S MIDDLE SCHOO	210509 199-11-6399.00-041-111000	185/LOWES	C	WATER FOR CAMPUSES	60.45	N
				N-S MIDDLE SCHOO	210061 199-11-6399.00-041-111000	177/EDGALAXY	C	ONLINE STAAR PRACTICE	85.52	N
				N-S MIDDLE SCHOO	210403 199-11-6399.00-041-111000	185/LOWES	C	WATER FOR CAMPUSES	25.96	N
				N-S MIDDLE SCHOO	210068 199-11-6399.00-041-111000	177/OFFICEDEPO	C	SUPPLIES FOR REMOTE P	210.55	N
				NIXON-SMILEY ELE	210264 199-11-6399.00-101-111000	136/WALMART	C	TEACHER MORALE	48.34	N

Check Nbr	Check Date	Vend Nbr	Payee	Organization	PO Nbr Fnd-Fnc-Obj.	Invoice Nbr So-Org-Prog	Typ Cd	Reason	Amount	EFT
				NIXON-SMILEY ELE	210202	136/TEACHERSPA	C	MATH DOWNLOADS	70.37	N
					199-11-6399.00-101-111000					
				NIXON-SMILEY ELE	210265	136/WALMART	C	DATA WALL SUPPLIES	9.52	N
					199-11-6399.00-101-111000					
				NIXON-SMILEY ELE	210379	136/NAMETAG	C	SUPPLIES	55.77	N
					199-11-6399.00-101-111000					
				NIXON-SMILEY ELE	210156	136/ROCKMATH	C	Online Math skills game	253.00	N
					199-11-6399.41-101-111411					
				N-S MIDDLE SCHOO	210065	177/TASSP	C	TASSP MEMBERSHIP	255.00	N
					199-23-6495.00-041-199000					
				N-S MIDDLE SCHOO	210060	177/TASSP	C	PROFESSIONAL MEMBER	255.00	N
					199-23-6495.00-041-199000					
				PUPIL TRANSPORT	210440	20/GONZALES	C	VEHICLE REGISTRATION	18.00	N
					199-34-6249.00-908-199000					
				PUPIL TRANSPORT	210409	185/CARAWAY	C	VEHICLE INSPECTIONS	93.50	N
					199-34-6249.00-908-199000					
				PUPIL TRANSPORT	210322	20/DISCOUNTTIR	C	REPLACED TIRES - TAUR	914.00	N
					199-34-6249.00-908-199000					
				ATHLETICS	210341	227/NIKE	C	Bball Equipment	1,136.15	N
					199-36-6399.02-860-191000					
				ATHLETICS	210340	227/PREHOOPS	C	Prep Hoops Subscription	99.99	N
					199-36-6411.02-860-191000					
				ATHLETICS	210550	227/THSCA	C	Membership Fees- Coaches	70.00	N
					199-36-6411.98-860-191000					
				ATHLETICS	210550	227/THSCA	C	Membership Fees- Coaches	70.00	N
					199-36-6411.98-860-191000					
				PLANT MAINT. & OP	210325	12/TELLUS	C	STARTER KIT - MOWER	233.72	N
					199-51-6398.50-905-199000					
				DAY CARE	210330	86/TARGET	C	Daycare Playground Materia	129.35	N
					199-61-6399.00-800-199000					
								Check 044041 Total:	4,865.11	
								Vendor 00826 Total:	5,321.47	
044066	10-23-2020	00856	N-S CISD YEARBOOK	NIXON-SMILEY ELE	210242	ELEMENTARY	C	YEAR BOOK-CAMPUS CO	25.00	N
					199-11-6399.00-101-111000					
044018	10-16-2020	00857	N-S CISD CAFETERIA	DAY CARE	210356	SEPTEMBER	C	Daycare - September Meals	706.50	N
					199-61-6399.01-800-199000					
044052	10-23-2020	00917	LARRY FRIEDENBERG	ATHLETICS	210553	VB 10/17	C	VB Official 10/17 Great Harri	140.00	N
					199-36-6299.11-860-191000					
044071	10-23-2020	00946	SCHOLASTIC BOOK FAN-S	MIDDLE SCHOO	210429	M6938882	C	CLASSROOM RESOURCE	219.78	N
					199-11-6399.00-041-111000					
044002	10-16-2020	01198	ORLANDO FLORES	ATHLETICS	210466	FB 10/9/20	C	FB Official 10/9 Natalia	120.00	N
					199-36-6299.05-860-191000					
044010	10-16-2020	01202	PATRICK HUERTA	ATHLETICS	210468	FB 10/9/20	C	FB Official 10/9 Natalia	120.00	N
					199-36-6299.05-860-191000					
044050	10-23-2020	01303	ESC REGION 20	DISTRICT WIDE	210534	192244	C	Fed Prog Workshop-Bergqui	50.00	N
					199-11-6411.01-999-111000					
				PLANT MAINT. & OP	210535	332116	C	FIBER - REGION 20	1,200.00	N
					199-51-6239.05-905-199000					
								Check 044050 Total:	1,250.00	
								Vendor 01303 Total:	1,250.00	

Check Nbr	Check Date	Vend Nbr	Payee	Organization	PO Nbr Fnd-Fnc-Obj,So-Org-Prog	Invoice Nbr	Typ Cd	Reason	Amount	EFT
043986	10-16-2020	01312	ALAMO LUMBER	PLANT MAINT. & OP	210442	2010-820757	C	BUILDING SUPPLIES	34.02	N
						199-51-6319.01-905-199000				
				PLANT MAINT. & OP	210442	2009-778932	C	BUILDING SUPPLIES	22.15	N
						199-51-6319.01-905-199000				
				PLANT MAINT. & OP	210442	2010-797649	C	BUILDING SUPPLIES	2.38	N
						199-51-6319.01-905-199000				
				PLANT MAINT. & OP	210442	2009-789623	C	BUILDING SUPPLIES	31.45	N
						199-51-6319.01-905-199000				
				PLANT MAINT. & OP	210442	2009-791301	C	BUILDING SUPPLIES	84.56	N
						199-51-6319.01-905-199000				
				PLANT MAINT. & OP	210442	2009-790838	C	BUILDING SUPPLIES	80.65	N
						199-51-6319.01-905-199000				
				PLANT MAINT. & OP	210442	2010-798109	C	BUILDING SUPPLIES	16.80	N
						199-51-6319.01-905-199000				
				PLANT MAINT. & OP	210442	2010-811647	C	BUILDING SUPPLIES	38.87	N
						199-51-6319.01-905-199000				
				PLANT MAINT. & OP	210442	2010-820913	C	BUILDING SUPPLIES	39.88	N
						199-51-6319.01-905-199000				
				PLANT MAINT. & OP	210442	2009-794837	C	BUILDING SUPPLIES	67.89	N
						199-51-6319.01-905-199000				
				PLANT MAINT. & OP	210442	2009-793105	C	BUILDING SUPPLIES	26.94	N
						199-51-6319.01-905-199000				
				PLANT MAINT. & OP	210442	2010-808382	C	BUILDING SUPPLIES	17.97	N
						199-51-6319.01-905-199000				
				PLANT MAINT. & OP	210442	2010-813321	C	BUILDING SUPPLIES	4.98	N
						199-51-6319.01-905-199000				
				PLANT MAINT. & OP	210442	2009-773209	C	BUILDING SUPPLIES	7.98	N
						199-51-6319.01-905-199000				
				PLANT MAINT. & OP	210442	2010-798140	C	BUILDING SUPPLIES	10.98	N
						199-51-6319.01-905-199000				
				PLANT MAINT. & OP	210442	2010-818449	C	BUILDING SUPPLIES	13.98	N
						199-51-6319.01-905-199000				
				PLANT MAINT. & OP	210442	2009-769036	C	BUILDING SUPPLIES	15.98	N
						199-51-6319.01-905-199000				
				PLANT MAINT. & OP	210442	2009-778925	C	BUILDING SUPPLIES	19.98	N
						199-51-6319.01-905-199000				
				PLANT MAINT. & OP	210442	2010-801766	C	BUILDING SUPPLIES	19.98	N
						199-51-6319.01-905-199000				
				PLANT MAINT. & OP	210442	2009-796488	C	BUILDING SUPPLIES	27.98	N
						199-51-6319.01-905-199000				
				PLANT MAINT. & OP	210442	2010-799379	C	BUILDING SUPPLIES	34.98	N
						199-51-6319.01-905-199000				
				PLANT MAINT. & OP	210442	2010-816530	C	BUILDING SUPPLIES	51.98	N
						199-51-6319.01-905-199000				
				PLANT MAINT. & OP	210442	2010-819302	C	BUILDING SUPPLIES	4.99	N
						199-51-6319.01-905-199000				
				PLANT MAINT. & OP	210442	2009-788585	C	BUILDING SUPPLIES	13.99	N
						199-51-6319.01-905-199000				
				PLANT MAINT. & OP	210442	2009-754656	C	BUILDING SUPPLIES	14.99	N
						199-51-6319.01-905-199000				
				PLANT MAINT. & OP	210441	2009-789704	C	GROUNDS SUPPLIES	25.98	N
						199-51-6319.03-905-199000				
				PLANT MAINT. & OP	210441	2009-808325	C	GROUNDS SUPPLIES	171.78	N
						199-51-6319.03-905-199000				

Check Nbr	Check Date	Vend Nbr	Payee	Organization	PO Nbr Fnd-Fnc-Obj-So-Org-Prog	Invoice Nbr So-Obj-So-Org-Prog	Typ Cd	Reason	Amount	EFT
044078	10-30-2020	01312	ALAMO LUMBER	PLANT MAINT. & OP	210612	2010821375	C	BUILDING SUPPLIES	16.41	N
						199-51-6319.01-905-199000				
				PLANT MAINT. & OP	210612	2010828902	C	BUILDING SUPPLIES	12.48	N
						199-51-6319.01-905-199000				
				PLANT MAINT. & OP	210612	2010837221	C	BUILDING SUPPLIES	63.53	N
						199-51-6319.01-905-199000				
				PLANT MAINT. & OP	210612	2010828157	C	BUILDING SUPPLIES	9.74	N
						199-51-6319.01-905-199000				
				PLANT MAINT. & OP	210612	2010830989	C	BUILDING SUPPLIES	35.96	N
						199-51-6319.01-905-199000				
				PLANT MAINT. & OP	210612	2010835565	C	BUILDING SUPPLIES	17.97	N
						199-51-6319.01-905-199000				
				PLANT MAINT. & OP	210612	2010854461	C	BUILDING SUPPLIES	33.97	N
						199-51-6319.01-905-199000				
				PLANT MAINT. & OP	210612	2010829082	C	BUILDING SUPPLIES	43.97	N
						199-51-6319.01-905-199000				
				PLANT MAINT. & OP	210612	2010858074	C	BUILDING SUPPLIES	10.98	N
						199-51-6319.01-905-199000				
				PLANT MAINT. & OP	210612	2010853315	C	BUILDING SUPPLIES	17.98	N
						199-51-6319.01-905-199000				
				PLANT MAINT. & OP	210612	2010828900	C	BUILDING SUPPLIES	19.98	N
						199-51-6319.01-905-199000				
				PLANT MAINT. & OP	210612	2010863004	C	BUILDING SUPPLIES	35.98	N
						199-51-6319.01-905-199000				
				PLANT MAINT. & OP	210612	2010855301	C	BUILDING SUPPLIES	14.99	N
						199-51-6319.01-905-199000				
				PLANT MAINT. & OP	210612	2010852226	C	BUILDING SUPPLIES	17.99	N
						199-51-6319.01-905-199000				
				PLANT MAINT. & OP	210612	2010832119	C	BUILDING SUPPLIES	19.99	N
						199-51-6319.01-905-199000				
				PLANT MAINT. & OP	210612	2010857171	C	BUILDING SUPPLIES	112.11	N
						199-51-6319.01-905-199000				
				PLANT MAINT. & OP	210612	2010863002	C	BUILDING SUPPLIES	107.82	N
						199-51-6319.01-905-199000				
				PLANT MAINT. & OP	210612	2010835670	C	BUILDING SUPPLIES	134.97	N
						199-51-6319.01-905-199000				
				PLANT MAINT. & OP	210613	2010837057	C	GROUNDS SUPPLIES	125.98	N
						199-51-6319.03-905-199000				
Check 044078 Total:									852.80	
Vendor 01312 Total:									1,756.89	
044076	10-23-2020	01408	THOMPSON BUSINESS	BUSINESS OFFICE	210542	0333888-0333891	C	Check Stock	1,071.56	N
						199-53-6399.00-750-199000				
044116	10-30-2020	04153	UIL MUSIC REGION 12	BAND	210555	CONTEST FEE	C	ENTRY FEE FOR UIL REGI	460.00	N
						199-36-6412.30-852-111000				
043995	10-16-2020	04398	CITY OF SMILEY	PLANT MAINT. & OP	210458	7/22-8/26/20	C	Water Bill-August	1,621.97	N
						199-51-6259.00-905-199000				
044033	10-16-2020	04588	UNIVERSITY OF TEXA	N-S HIGH SCHOOL	210387	LOAN LIBRARY	C	ONE ACT PLAY PERUSAL	7.00	N
						199-36-6399.34-001-199000				
044009	10-16-2020	04676	CITIBANK, N.A.	DAY CARE	210309	WM19581138	C	Daycare Playground Materia	219.99	N
						199-61-6399.00-800-199000				

Check Nbr	Check Date	Vend Nbr	Payee	Organization	PO Nbr Fnd-Fnc-Obj.-So-Org-Prog	Invoice Nbr	Typ Cd	Reason	Amount	EFT
005007	10-23-2020	04695	TEXAS FFA ASSOCIATI	FFA	210504 865-00-2190.00-958-100000	206179	C	STATE & NATIONAL FFA D	1,170.00	N
044025	10-16-2020	05069	ANTHONY SANCHEZ	ATHLETICS	210463 199-36-6299.11-860-191000	VB 10/9/20	C	VB Official 10/9 Randolph	140.00	N
044045	10-23-2020	05116	BRANNON GLENN GLA	PUPIL TRANSPORT	210522 199-34-6249.00-908-199000	76195	C	DOT BUS INSPECTION #33	40.00	N
044086	10-30-2020	05143	ANDREW GARZA	ATHLETICS	210632 199-36-6299.05-860-191000	FB 10/24/20	C	FB Official 10/24 Karnes City	120.00	N
043909	10-15-2020	05428	ADI	N-S HIGH SCHOOL	210220 199-11-6399.00-001-111000	101-1981	D	WRONG VENDOR	-798.00	N
044040	10-23-2020	05491	BSN SPORTS, INC.	DISTRICT WIDE	202732 199-00-2111.20-000-100000	909824608	C	FACE COVERING SIGNAG	299.00	N
				DISTRICT WIDE	202734 199-00-2111.20-000-100000	909824607	C	NECK BUFFS	1,332.50	N
				ATHLETICS	210104 199-36-6399.02-860-191000	910413885	C	Bball Equipment	395.00	N
								Check 044040 Total:	2,026.50	
								Vendor 05491 Total:	2,026.50	
044038	10-23-2020	05805	ANDY'S AUTO AIR & S	PUPIL TRANSPORT	210575 199-34-6318.00-908-123000	403235	C	BUS REPAIR PARTS - SPE	190.09	N
044092	10-30-2020	05884	HILLJE MUSIC CENTE	BAND	210376 199-11-6249.30-852-111000	V46046	C	OPEN PO	110.00	N
				BAND	210376 199-11-6399.30-852-111000	9E4640-0	C	OPEN PO	170.00	N
								Check 044092 Total:	280.00	
								Vendor 05884 Total:	280.00	
044031	10-16-2020	06090	TFS LEASING A PROG	N-S HIGH SCHOOL	210448 199-11-6269.00-001-111000	69733423	C	COPIER LEASE	1,668.34	N
				N-S MIDDLE SCHOO	210448 199-11-6269.00-041-111000	69733423	C	COPIER LEASE	1,668.34	N
				NIXON-SMILEY ELE	210448 199-11-6269.00-101-111000	69733423	C	COPIER LEASE	1,668.36	N
								Check 044031 Total:	5,005.04	
								Vendor 06090 Total:	5,005.04	
005001	10-16-2020	06205	PERSONAL IMPRESSI	ELEM FUNDRAISER	210436 461-36-6399.00-927-199000	18591	C	SHIRTS	3,463.12	N
005002	10-16-2020	06263	SP ENTERPRISES	HIGH SCHOOL CHE	210483 865-00-2190.00-964-100000	2233	C	PINK OUT TSHIRT	689.00	N
044074	10-23-2020	06263	SP ENTERPRISES	ATHLETICS	210556 199-36-6399.05-860-191000	2222	C	FB Shirts	706.00	N
								Vendor 06263 Total:	1,395.00	
044110	10-30-2020	06613	LONNIE ALAN SNYDER	ATHLETICS	210600 199-36-6299.21-860-191000	VB 10/19/20	C	VB Official 10/19 Cole	150.00	N
				ATHLETICS	210644 199-36-6299.21-860-191000	VB 10/26/20	C	VB Official 10/26/20 Luling	150.00	N
								Check 044110 Total:	300.00	
								Vendor 06613 Total:	300.00	

Check Nbr	Check Date	Vend Nbr	Payee	Organization	PO Nbr Fnd-Fnc-Obj.	Invoice Nbr So-Org-Prog	Typ Cd	Reason	Amount	EFT
044034	10-16-2020	06654	VILLASENOR TIRE SH	PUPIL TRANSPORT	210476	1413	C	TIRE INSTALLATION	100.00	N
					199-34-6249.00-908-199000					
044039	10-23-2020	06706	BRAVO ROOFING	PLANT MAINT. & OP	210519	6739395	C	ROOF REPAIRS 200 & 300	6,585.00	N
					199-51-6299.90-905-199000					
044105	10-30-2020	06796	PITNEY BOWES	N-S HIGH SCHOOL	210658	19865401	C	Postage	209.01	N
					199-11-6399.02-001-111000					
				NIXON-SMILEY ELE	210658	19865401	C	Postage	38.40	N
					199-11-6399.02-101-111000					
				N-S MIDDLE SCHOO	210658	19865401	C	Postage	52.50	N
					199-11-6399.04-041-111000					
				SPECIAL ED DEPT.	210658	19865401	C	Postage	124.45	N
					199-21-6399.00-909-123000					
				ATHLETICS	210658	19865401	C	Postage	6.21	N
					199-36-6399.50-860-191000					
				BUSINESS OFFICE	210658	19865401	C	Postage	72.93	N
					199-53-6399.02-750-199000					
								Check 044105 Total:	503.50	
								Vendor 06796 Total:	503.50	
044020	10-16-2020	07038	THIRD COAST DISTRIB	PUPIL TRANSPORT	210443	151954	C	VEHICLE REPAIR PARTS	2.33	N
					199-34-6318.00-908-199000					
				PUPIL TRANSPORT	210443	151899	C	VEHICLE REPAIR PARTS	7.99	N
					199-34-6318.00-908-199000					
								Check 044020 Total:	10.32	
044104	10-30-2020	07038	THIRD COAST DISTRIB	PUPIL TRANSPORT	210624	152709	C	VEHICLE REPAIR PARTS	13.38	N
					199-34-6318.00-908-199000					
				PUPIL TRANSPORT	210624	152123	C	VEHICLE REPAIR PARTS	15.38	N
					199-34-6318.00-908-199000					
				PUPIL TRANSPORT	210624	152879	C	VEHICLE REPAIR PARTS	6.98	N
					199-34-6318.00-908-199000					
				PUPIL TRANSPORT	210624	152880	C	VEHICLE REPAIR PARTS	128.00	N
					199-34-6318.00-908-199000					
				PUPIL TRANSPORT	210624	152619	C	VEHICLE REPAIR PARTS	103.86	N
					199-34-6318.00-908-199000					
								Check 044104 Total:	267.60	
								Vendor 07038 Total:	277.92	
043994	10-16-2020	07068	CENTRAL TEXAS FOO	CAFETERIA	210457	AO38329-1	C	STORAGE FEE	16.00	N
					240-35-6344.01-904-199000					
044007	10-16-2020	07079	HEALTH SPECIAL RISK	ATHLETICS	210447	349630	C	ATHLETIC STUDENT INSU	5,770.00	N
					199-36-6429.00-860-191000					
				ATHLETICS	210446	350087	C	ATHLETIC STUDENT INSU	661.60	N
					199-36-6429.00-860-191000					
								Check 044007 Total:	6,431.60	
								Vendor 07079 Total:	6,431.60	
044003	10-16-2020	07108	ALBERT GONZALES	ATHLETICS	210470	FB 10/9/20	C	FB Official 10/9 Natalia	120.00	N
					199-36-6299.05-860-191000					
044048	10-23-2020	07118	DIRECT ENERGY BUSI	PLANT MAINT. & OP	210548	202870043600585	C	Rental Property Electric Bill	62.42	N
					199-51-6259.02-905-199000					
				PLANT MAINT. & OP	210564	202880043618664	C	Electric Bill - Oct	22,019.33	N
					199-51-6259.02-905-199000					
				FISCAL AGENT SSA	210564	202880043618664	C	Electric Bill - Oct	490.87	N
					458-51-6259.02-751-128000					
				FISCAL AGENT SSA	210564	202880043618664	C	Electric Bill - Oct	218.37	N
					458-51-6259.03-751-128000					

Check Nbr	Check Date	Vend Nbr	Payee	Organization	PO Nbr Fnd-Fnc-Obj.	Invoice Nbr So-Org-Prog	Typ Cd	Reason	Amount	EFT
								Check 044048 Total:	22,790.99	
								Vendor 07118 Total:	22,790.99	
044004	10-16-2020	07127	GP SAND & GRAVEL	PLANT MAINT. & OP	210475	128974	C	SANDY LOAM DIRT - SMIL	180.00	N
					199-51-6319.03-905-199000					
044059	10-23-2020	07328	HIGH SCHOOL MUSIC	BAND	210382	1240608	C	OPEN PO REPAIRS	73.00	N
					199-11-6249.30-852-111000					
				BAND	210382	1240605	C	OPEN PO REPAIRS	118.00	N
					199-11-6249.30-852-111000					
				BAND	210382	1240604	C	OPEN PO REPAIRS	128.00	N
					199-11-6249.30-852-111000					
				BAND	210382	1240606	C	OPEN PO REPAIRS	128.00	N
					199-11-6249.30-852-111000					
				BAND	210382	1241176	C	OPEN PO REPAIRS	199.90	N
					199-11-6249.30-852-111000					
				BAND	210382	1242831	C	OPEN PO REPAIRS	229.98	N
					199-11-6249.30-852-111000					
				BAND	210382	M1234906	C	OPEN PO REPAIRS	501.99	N
					199-11-6249.30-852-111000					
				BAND	210383	1242832	C	OPEN PO SUPPLY PURCH	109.20	N
					199-11-6399.30-852-111000					
				BAND	210383	1236377	C	OPEN PO SUPPLY PURCH	437.42	N
					199-11-6399.30-852-111000					
				BAND	210383	1241174	C	OPEN PO SUPPLY PURCH	385.54	N
					199-11-6399.30-852-111000					
								Check 044059 Total:	2,311.03	
								Vendor 07328 Total:	2,311.03	
044080	10-30-2020	07331	AUTOMATIC FIRE PRO	PLANT MAINT. & OP	210611	400940	C	REPAIR CONTROL VALVE	900.00	N
					199-51-6299.00-905-199000					
043997	10-16-2020	07541	GREAT SOUTH TEXAS	DISTRICT WIDE	010922		C	4 MERAKI WAPS	4,982.32	N
					498-00-2111.20-000-100000					
044082	10-30-2020	07541	GREAT SOUTH TEXAS	N-S MIDDLE SCHOO	210472	407815	C	Bell/fax line support	120.00	N
					199-11-6299.41-041-111400					
								Vendor 07541 Total:	5,102.32	
044090	10-30-2020	07651	HARRIS RATINGS WEE	ATHLETICS	210643	15020	C	Scouting Service	99.99	N
					199-36-6411.05-860-191000					
044084	10-30-2020	07732	DOGGETT FREIGHTLI	PUPIL TRANSPORT	210582	R101067248	C	BUS 74 REPAIR	2,171.13	N
					199-34-6249.00-908-199000					
				PUPIL TRANSPORT	210625	X101654349:01	C	BUS REPAIR PARTS	85.72	N
					199-34-6318.00-908-199000					
								Check 044084 Total:	2,256.85	
								Vendor 07732 Total:	2,256.85	
044011	10-16-2020	07749	INTECH SOUTHWEST	N-S HIGH SCHOOL	210281	10048171	C	Barcodes	300.00	N
					199-11-6399.41-001-111400					
				N-S MIDDLE SCHOO	210281	10048171	C	Barcodes	300.00	N
					199-11-6399.41-041-111400					
				NIXON-SMILEY ELE	210281	10048171	C	Barcodes	300.00	N
					199-11-6399.41-101-111400					
								Check 044011 Total:	900.00	
								Vendor 07749 Total:	900.00	

Check Nbr	Check Date	Vend Nbr	Payee	Organization	PO Nbr Fnd-Fnc-Obj.-So-Org-Prog	Invoice Nbr So-Org-Prog	Typ Cd	Reason	Amount	EFT
044051	10-23-2020	07823	THE FLOWER TUB	N-S HIGH SCHOOL	210501 199-11-6399.00-001-111000	HOME COMING	C	HOME COMING	94.99	N
043987	10-16-2020	07882	BC GROUP HOLDINGS, NIXON-SMILEY ELE		210209 199-11-6399.00-101-111000	6465137	C	BADGE SUPPLIES	249.75	N
044102	10-30-2020	07945	ALDON JOHN MILLER	ATHLETICS	210603 199-36-6299.25-860-191000	FB 10/22/20	C	FB Official 10/22 Karnes City	130.00	N
044118	10-30-2020	07950	ALLEN WANSLEY	ATHLETICS	210633 199-36-6299.05-860-191000	FB 10/24	C	FB Official 10/24 Karnes City	120.00	N
044077	10-23-2020	07982	UNIFIRST HOLDINGS, I	PLANT MAINT. & OP	210527 199-51-6299.00-905-199000	8213518382	C	Uniforms & Mats 10/15	18.40	N
				PLANT MAINT. & OP	210527 199-51-6299.00-905-199000	8213518384	C	Uniforms & Mats 10/15	143.34	N
				PLANT MAINT. & OP	210565 199-51-6299.00-905-199000	8213520932	C	Uniforms & Mats 10/22/20	121.40	N
				PLANT MAINT. & OP	210565 199-51-6299.00-905-199000	8213520930	C	Uniforms & Mats 10/22/20	352.48	N
				PLANT MAINT. & OP	210565 199-51-6299.02-905-199000	8213520930	C	Uniforms & Mats 10/22/20	202.98	N
				PLANT MAINT. & OP	210527 199-51-6299.02-905-199000	8213518382	C	Uniforms & Mats 10/15	181.98	N
				CAFETERIA	210565 240-35-6299.02-904-199000	8213520933	C	Uniforms & Mats 10/22/20	52.26	N
				CAFETERIA	210527 240-35-6299.02-904-199000	8213518383	C	Uniforms & Mats 10/15	74.86	N
				CAFETERIA	210565 240-35-6299.02-904-199000	8213520931	C	Uniforms & Mats 10/22/20	74.86	N
				CAFETERIA	210527 240-35-6299.02-904-199000	8213518384	C	Uniforms & Mats 10/15	51.93	N
				FISCAL AGENT SSA	210527 458-51-6291.01-751-128000	8213518440	C	Uniforms & Mats 10/15	41.62	N
Check 044077 Total:									1,316.11	
044117	10-30-2020	07982	UNIFIRST HOLDINGS, I	PLANT MAINT. & OP	210660 199-51-6299.00-905-199000	8213523548	C	Uniforms and Mats	18.40	N
				PLANT MAINT. & OP	210660 199-51-6299.00-905-199000	8213523550	C	Uniforms and Mats	143.34	N
				PLANT MAINT. & OP	210660 199-51-6299.02-905-199000	8213523548	C	Uniforms and Mats	195.23	N
				CAFETERIA	210660 240-35-6299.02-904-199000	8213523549	C	Uniforms and Mats	74.86	N
				CAFETERIA	210660 240-35-6299.02-904-199000	8213523550	C	Uniforms and Mats	51.93	N
				FISCAL AGENT SSA	210660 458-51-6291.01-751-128000	8213523603	C	Uniforms and Mats	41.62	N
Check 044117 Total:									525.38	
Vendor 07982 Total:									1,841.49	
044075	10-23-2020	08009	DS SERVICES OF AME	N-S MIDDLE SCHOO	210544 199-11-6399.00-041-111000	14203379101120	C	Monthly Cooler & Water Cha	36.74	N
				SPECIAL ED DEPT.	210544 199-31-6399.00-909-123000	14203379101120	C	Monthly Cooler & Water Cha	36.74	N
				PUPIL TRANSPORT	210544 199-34-6399.00-908-199000	14203379101120	C	Monthly Cooler & Water Cha	36.73	N
				DAY CARE	210544 199-61-6399.00-800-199000	14203379101120	C	Monthly Cooler & Water Cha	36.74	N

Check Nbr	Check Date	Vend Nbr	Payee	Organization	PO Nbr Fnd-Fnc-Obj.	Invoice Nbr So-Org-Prog	Typ Cd	Reason	Amount	EFT
								Check 044075 Total:	146.95	
								Vendor 08009 Total:	146.95	
044096	10-30-2020	08040	LEARNING A-Z	N-S HIGH SCHOOL	210421	2861901 199-11-6399.42-001-123400	C	Leveled Reading	115.45	N
044030	10-16-2020	08062	TEXQUEST	N-S HIGH SCHOOL	210388	TQ21400 199-12-6329.00-001-199000	C	INVOICE	314.07	N
044069	10-23-2020	08094	ROCHESTER 100 INC.	NIXON-SMILEY ELE	210208	66648 199-11-6399.00-101-111000	C	STUDENT COMMUNICATO	135.00	N
005004	10-23-2020	08162	TAMMY BROTHERS	GENERAL-DIST	210566	0000001 461-36-6399.00-951-199000	C	CONCESSION STAND PRO	168.24	N
				PROM FUND	210566	00001 461-36-6399.00-989-199000	C	CONCESSION STAND PRO	1,123.00	N
								Check 005004 Total:	1,291.24	
								Vendor 08162 Total:	1,291.24	
044062	10-23-2020	08179	DOGISTICS SERVICES	N-S HIGH SCHOOL	210539	2258 199-52-6299.05-001-199000	C	DRUG DETECTION SERVI	540.00	N
044119	10-30-2020	08247	ANTHONY WILLIAMS	ATHLETICS	210635	FB 10/24/20 199-36-6299.05-860-191000	C	FB Official 10/24 Karnes City	120.00	N
044115	10-30-2020	08422	TRANSLATE SOLUTIO	SPECIAL ED DEPT.	210592	TS1311 199-11-6299.06-909-123000	C	2 TRANSLATED ARDS	900.80	N
044015	10-16-2020	08496	MARK L MARTINEZ	ATHLETICS	210469	FB 10/9/20 199-36-6299.05-860-191000	C	FB Official 10/9 Natalia	120.00	N
044014	10-16-2020	08523	LUKE MCMILLAN MUSI	BAND	210380	2495 199-11-6291.03-852-111000	C	CUSTOM SHOW WARM UP	500.00	N
044109	10-30-2020	08595	SHOPPA'S FARM	PLANT MAINT. & OP	210581	184929 199-51-6249.01-905-199000	C	LAWN TRACTOR REPAIR	269.19	N
044114	10-30-2020	08627	TEXAS POLITICAL SUB	PUPIL TRANSPORT	210591	103435 199-34-6429.00-908-199000	C	ADDITIONAL AUTO INSUR	805.00	N
043991	10-16-2020	08711	Chris Asadourian	ATHLETICS	210465	FB 10/9/20 199-36-6299.05-860-191000	C	FB Official 10/9 Natalia	120.00	N
044001	10-16-2020	08712	FALLS CITY AGENCY F	BAND	210375	ENTRY FEE 199-36-6412.30-852-111000	C	ENTRY FEE	200.00	N
044012	10-16-2020	08757	KYRISH TRUCK CENTE	PUPIL TRANSPORT	210444	X201153484:01 199-34-6318.00-908-199000	C	VEHICLE REPAIR PARTS	78.09	N
				PUPIL TRANSPORT	210444	X201153670:01 199-34-6318.00-908-199000	C	VEHICLE REPAIR PARTS	254.76	N
								Check 044012 Total:	332.85	
								Vendor 08757 Total:	332.85	
044101	10-30-2020	08849	McCoy Tim	ATHLETICS	210601	FB 10/22/20 199-36-6299.25-860-191000	C	FB Official 10/22 Karnes City	130.00	N
044057	10-23-2020	08858	Harper Jeffrey D	ATHLETICS	210554	VB 10/17 199-36-6299.11-860-191000	C	VB Official 10/17 Great Harri	140.00	N
005003	10-23-2020	08886	AREA XI FFA ASSOCIA	FFA	210505	206180 865-00-2190.00-958-100000	C	FFA MEMBERSHIP DUES F	402.00	N

Date Run: 11-04-2020 2:06 PM
 Cnty Dist: 089-903
 From 10-14-2020 To 11-03-2020
 Accounting Period: A

Y-T-D Check Payments
 NIXON-SMILEY CISD
 Sort by Vendor Number, Check Number, Account Code

Program: FIN1750
 Page: 15 of 18
 File ID: C

Check Nbr	Check Date	Vend Nbr	Payee	Organization	PO Nbr Fnd-Fnc-Obj	Invoice Nbr So-Org-Prog	Typ Cd	Reason	Amount	EFT
005006	10-23-2020	08887	DISTRICT 1 HORIZON	FFA	210506	206181	C	DISTRICT FFA DUES	167.50	N
					865-00-2190.00-958-100000					
044067	10-23-2020	08889	NATUS MEDICAL INC	N-S MIDDLE SCHOO	210329	30461	C	Calibrate Audiometers-EL &	182.28	N
					199-33-6249.00-041-199000					
				NIXON-SMILEY ELE	210329	30461	C	Calibrate Audiometers-EL &	182.28	N
					199-33-6249.00-101-199000					
								Check 044067 Total:	364.56	
								Vendor 08889 Total:	364.56	
044058	10-23-2020	08897	HI-TECH PEST SERVIC PLANT MAINT. & OP		210523	NIXON CAFE.	C	PEST CONTROL	95.00	N
					199-51-6299.00-905-199000					
				PLANT MAINT. & OP	210523	SMILEY CAFE.	C	PEST CONTROL	95.00	N
					199-51-6299.00-905-199000					
				PLANT MAINT. & OP	210523	DAEP	C	PEST CONTROL	100.00	N
					199-51-6299.00-905-199000					
								Check 044058 Total:	290.00	
								Vendor 08897 Total:	290.00	
044000	10-16-2020	08910	John Joe Espinoza	ATHLETICS	210467	FB 10/9/20	C	FB Official 10/9 Natalia	120.00	N
					199-36-6299.05-860-191000					
044097	10-30-2020	08939	ERIN A LINDEMANN-LA N-S MIDDLE SCHOO		210593	10/13/2020	C	1 EVALUATION	700.00	N
					199-11-6299.06-041-123000					
044023	10-16-2020	08954	Alejandro Osteguín	ATHLETICS	210464	FB 10/9/20	C	FB Official 10/9 Natalia	120.00	N
					199-36-6299.05-860-191000					
044036	10-23-2020	09028	ACME SAFE & LOCK C PLANT MAINT. & OP		210511	59975	C	MASTER LOCKS	89.50	N
					199-51-6319.01-905-199000					
044098	10-30-2020	09070	COLON-RIVERA LIZBE	DISTRICT WIDE	110-04	AUGUST	C	MILEAGE REIMBURSMENT	168.90	N
					199-00-2111.20-000-100000					
				DISTRICT WIDE	110-04	OCTOBER	C	MILEAGE REIMBURSMENT	89.73	N
					199-11-6411.01-999-111400					
				DISTRICT WIDE	110-04	SEPTEMBER	C	MILEAGE REIMBURSMENT	163.62	N
					199-11-6411.01-999-111400					
								Check 044098 Total:	422.25	
								Vendor 09070 Total:	422.25	
043988	10-16-2020	09087	AMAZON CAPITAL SER	N-S MIDDLE SCHOO	210139	1P1N-HCXT-9L4V	C	STUDENT SUPPLIES	146.99	N
					199-11-6399.00-041-111000					
				NIXON-SMILEY ELE	210212	11Q3-GYCV-LF4V	C	PK SUPPLIES	113.82	N
					199-11-6399.00-101-134000					
				NIXON-SMILEY ELE	210313	14JJ-694M-1FDH	C	PK 3 COURTYARD	259.99	N
					199-11-6399.00-101-134000					
				N-S HIGH SCHOOL	210279	1W71-QMN4-	C	Misc supplies	44.33	N
					199-11-6399.41-001-111400					
				N-S HIGH SCHOOL	210305	1Y74-1N9V-XG4F	C	Misc equipment	64.40	N
					199-11-6399.41-001-111400					
				N-S HIGH SCHOOL	210279	1Y4M-7MX1-G9JN	C	Misc supplies	38.70	N
					199-11-6399.41-001-111400					
				N-S HIGH SCHOOL	210279	1J69-CN6M-JXHJ	C	Misc supplies	66.97	N
					199-11-6399.41-001-111400					
				N-S HIGH SCHOOL	210015	1KYF-1RJL-7KDM	C	Misc supplies	203.01	N
					199-11-6399.41-001-111400					
				N-S HIGH SCHOOL	210305	1Y74-1N9V-WF6G	C	Misc equipment	292.24	N
					199-11-6399.41-001-111400					
				N-S HIGH SCHOOL	210015	1NKN-D69N-	C	Misc supplies	546.99	N
					199-11-6399.41-001-111400					

Check Nbr	Check Date	Vend Nbr	Payee	Organization	PO Nbr Fnd-Fnc-Obj.-So-Org-Prog	Invoice Nbr	Typ Cd	Reason	Amount	EFT
				N-S MIDDLE SCHOO	210015	1KYF-1RJL-7KDM	C	Misc supplies	200.00	N
					199-11-6399.41-041-111400					
				N-S MIDDLE SCHOO	210279	1W71-QMN4-	C	Misc supplies	42.64	N
					199-11-6399.41-041-111400					
				N-S MIDDLE SCHOO	210305	1176-41DD-RTVJ	C	Misc equipment	36.95	N
					199-11-6399.41-041-111400					
				N-S MIDDLE SCHOO	210279	1FCP-HNJT-7T9T	C	Misc supplies	107.36	N
					199-11-6399.41-041-111400					
				SPECIAL ED DEPT.	210015	1KYF-1RJL-7KDM	C	Misc supplies	535.00	N
					199-11-6399.41-909-123400					
				DISTRICT WIDE	210279	1FCP-HNJT-7T9T	C	Misc supplies	6.12	N
					199-11-6399.41-999-111400					
				DISTRICT WIDE	210279	1TNX-VTFL-Y6VK	C	Misc supplies	13.44	N
					199-11-6399.41-999-111400					
				DISTRICT WIDE	210015	1KYF-1RJL-7KDM	C	Misc supplies	4.65	N
					199-11-6399.41-999-111400					
				DISTRICT WIDE	210279	1419-TGVW-4GR3	C	Misc supplies	126.51	N
					199-11-6399.41-999-111400					
				DISTRICT WIDE	210186	1K4K-LRLY-3PHD	C	MDF staff equipment	198.79	N
					199-11-6399.41-999-111400					
				DISTRICT WIDE	210305	1176-41DD-RTVJ	C	Misc equipment	14.57	N
					199-11-6399.42-999-111400					
				DISTRICT WIDE	210305	1M3F-WJWP-GVJT	C	Misc equipment	102.25	N
					199-11-6399.42-999-111400					
				PLANT MAINT. & OP	210450	13FC-MKV6-QV43	C	SOLDER STICKS	33.89	N
					199-51-6319.01-905-199000					
								Check 043988 Total:	3,199.61	
044037	10-23-2020	09087	AMAZON CAPITAL SER	NIXON-SMILEY ELE	210207	1MCX-Q1K1-7TDT	C	GUIDANCE LESSONS	47.90	N
					199-11-6399.00-101-111000					
				NIXON-SMILEY ELE	210090	1GKX-WWP1-L14F	C	WATER PUMP	11.99	N
					199-11-6399.00-101-111000					
				NIXON-SMILEY ELE	210091	1NF6-C4PL-HF4R	C	WATER BOTTLES	59.99	N
					199-11-6399.00-101-111000					
				NIXON-SMILEY ELE	210354	1Y33-XJY4-T4PJ	C	SUPPLIES	261.55	N
					199-11-6399.00-101-111000					
				BAND	210384	1PFR-6CTF-WKTL	C	BINDERS FOR MS BAND S	179.81	N
					199-11-6399.30-852-111000					
				N-S HIGH SCHOOL	210378	1L7L-R6KN-WJJ4	C	SHREDDER FOR NURSE O	40.99	N
					199-33-6399.00-001-199000					
				PLANT MAINT. & OP	210537	13V4-HJF3-4GNF	C	METAL HALIDE BULBS	62.25	N
					199-51-6319.01-905-199000					
				PLANT MAINT. & OP	210520	1L4W-DXLY-LQW9	C	BUILDING SUPPLIES	74.38	N
					199-51-6319.01-905-199000					
				PLANT MAINT. & OP	210520	11XY-DFT3-LLNN	C	BUILDING SUPPLIES	70.83	N
					199-51-6319.01-905-199000					
				PLANT MAINT. & OP	210536	1KF6-HTQD-HKQL	C	WATER PUMPS FOR CAM	77.94	N
					199-51-6319.01-905-199000					
				PLANT MAINT. & OP	210520	1WYX-QJ6L-FK73	C	BUILDING SUPPLIES	26.99	N
					199-51-6319.01-905-199000					
				PLANT MAINT. & OP	210520	1XCL-GC46-HYJ3	C	BUILDING SUPPLIES	385.08	N
					199-51-6319.01-905-199000					
				PLANT MAINT. & OP	210521	1XK4-GT4Y-J7PV	C	A/C EQUIPMENT	875.07	N
					199-51-6319.02-905-199000					
				PLANT MAINT. & OP	210538	13FC-MKV6-QV43	C	A/C EQUIPMENT	129.99	N
					199-51-6319.02-905-199000					

Check Nbr	Check Date	Vend Nbr	Payee	Organization	PO Nbr Fnd-Fnc-Obj.	Invoice Nbr So-Org-Prog	Typ Cd	Reason	Amount	EFT
				BUSINESS OFFICE	210492	1TGD-WJ43-7GFF 199-53-6399.00-750-199000	C	Supplies	71.71	N
								Check 044037 Total:	2,376.47	
044079	10-30-2020	09087	AMAZON CAPITAL SER	N-S HIGH SCHOOL	210572	1JKX-QQCT-G7XF 199-11-6399.00-001-111000	C	HEADPHONES FOR APEX	49.99	N
				N-S HIGH SCHOOL	210331	1PV4-HJY9-17QJ 199-11-6399.41-001-111400	C	Replace bad projector	455.00	N
				NIXON-SMILEY ELE	210348	1316-NHW4-LWQT 199-11-6399.41-101-111400	C	Replace docking station	142.81	N
				DISTRICT WIDE	210332	1FGX-47K3-YC1G 199-11-6399.41-999-111400	C	Replace bad batteries	87.40	N
				PLANT MAINT. & OP	210619	1JKX-QQCT-F3FR 199-51-6319.01-905-199000	C	TOILET PAPER DISPENSE	79.80	N
				FISCAL AGENT SSA	210486	1LGV-TQKV-6XP6 458-11-6399.00-751-128000	C	office supplies	91.02	N
				FISCAL AGENT SSA	210438	1646-C1M7-KW7J 458-11-6399.00-751-128000	C	office supplies	165.70	N
								Check 044079 Total:	1,071.72	
								Vendor 09087 Total:	6,647.80	
043996	10-16-2020	09111	AMY COLLINS	BAND	210373	BAND PANTS 199-36-6399.30-852-199000	C	UNIFORM HEM FOR HS BA	70.00	N
044053	10-23-2020	09121	EDEN GONZALEZ	ATHLETICS	210551	VB 10/16/20 199-36-6299.11-860-191000	C	VB Official 10/16 Luling	140.00	N
044088	10-30-2020	09135	James Grey	ATHLETICS	210634	FB 10/24/20 199-36-6299.05-860-191000	C	FB Official 10/24 Karnes City	120.00	N
044032	10-16-2020	09138	TX ASSOC FOR THE GI	DISTRICT WIDE	210240	10576 199-13-6499.00-999-121000	C	GT 2020 Conference - Roge	349.00	N
044061	10-23-2020	09211	IMCAT	CURRICULUM ADM.	210459	2634 199-21-6411.00-907-199000	C	IMCAT Fall Conference	295.00	N
044093	10-30-2020	09220	HOTSYS EQUIPMENT C	DISTRICT WIDE	210286	75-95814 199-51-6319.20-999-199000	C	ELECTROSTATIC SPRAYE	699.99	N
044022	10-16-2020	09231	PHILLIP R NIMS	BAND	210385	1 199-11-6291.03-852-111000	C	SUMMER AND EVENING B	1,000.00	N
044019	10-16-2020	09239	N2Y, LLC	N-S HIGH SCHOOL	210148	1022653 199-11-6399.46-001-123400	C	LIFESKILLS CURRICULUM	407.67	N
				N-S HIGH SCHOOL	210148	1027030 199-11-6399.46-001-123400	C	LIFESKILLS CURRICULUM	665.92	N
				N-S MIDDLE SCHOO	210148	1022653 199-11-6399.46-041-123400	C	LIFESKILLS CURRICULUM	944.62	N
				NIXON-SMILEY ELE	210148	1022653 199-11-6399.46-101-123400	C	LIFESKILLS CURRICULUM	1,411.48	N
								Check 044019 Total:	3,429.69	
								Vendor 09239 Total:	3,429.69	
044026	10-16-2020	09242	SCHMIDT & SONS	PUPIL TRANSPORT	210449	0469240 199-34-6311.00-908-199000	C	FUEL FOR VEHICLES	911.77	N
044070	10-23-2020	09242	SCHMIDT & SONS	PUPIL TRANSPORT	210514	0469470 199-34-6311.00-908-123000	C	FUEL FOR VEHICLES	100.00	N
				PUPIL TRANSPORT	210514	0469470 199-34-6311.00-908-199000	C	FUEL FOR VEHICLES	877.00	N
								Check 044070 Total:	977.00	

Check Nbr	Check Date	Vend Nbr	Payee	Organization	PO Nbr Fnd-Fnc-Obj.	Invoice Nbr So-Org-Prog	Typ Cd	Reason	Amount	EFT
044107	10-30-2020	09242	SCHMIDT & SONS	PUPIL TRANSPORT	210586	0469860	C	FUEL FOR VEHICLES	145.00	N
					199-34-6311.00-908-123000					
				PUPIL TRANSPORT	210586	0469860	C	FUEL FOR VEHICLES	1,312.21	N
					199-34-6311.00-908-199000					
Check 044107 Total:									1,457.21	
Vendor 09242 Total:									3,345.98	
044042	10-23-2020	09259	CARNEGIE LEARNING, N-S HIGH SCHOOL		210155	1024986	C	9-12 ELAR Curriculum	41,834.50	N
					410-11-6399.00-001-111000					
				N-S MIDDLE SCHOO	210108	1024986	C	Grades 6-8 ELAR Curriculu	24,977.25	N
					410-11-6399.00-041-111000					
Check 044042 Total:									66,811.75	
Vendor 09259 Total:									66,811.75	
044073	10-23-2020	09270	SOUTHERN FLORAL C N-S HIGH SCHOOL		210244	104488	C	FLORAL DESIGN CLASSR	2,690.96	N
					199-11-6399.73-001-122000					
044024	10-16-2020	09271	PARTICLE COMMUNIC DISTRICT WIDE		210303	18926	C	Reporgram bridges	400.00	N
					199-11-6299.41-999-111400					
043990	10-16-2020	09273	ARGUMENT-DRIVEN INN-S HIGH SCHOOL		210220	101-1981	C	ONLINE PLATFORM	798.00	N
					199-11-6399.00-001-111000					
043989	10-16-2020	09281	Sandra Andrews	ATHLETICS	210462	VB 10/9/20	C	VB Official 10/9 Randolph	140.00	N
					199-36-6299.11-860-191000					
044046	10-23-2020	09283	DATA RECOGNITION C NIXON-SMILEY ELE		210349	146313	C	PK-K ENGLISH LEARNER I	23.65	N
					199-11-6339.00-101-125000					
				NIXON-SMILEY ELE	210349	146344	C	PK-K ENGLISH LEARNER I	262.50	N
					199-11-6339.00-101-125000					
Check 044046 Total:									286.15	
Vendor 09283 Total:									286.15	
044021	10-16-2020	09288	Bobby Jay Newton	ATHLETICS	210460	FB 10/8/20	C	FB Official 10/8 MS Natalia	130.00	N
					199-36-6299.25-860-191000					
044017	10-16-2020	09289	Christopher James Mayb	ATHLETICS	210461	FB 10/8/20	C	FB Official 10/8 MS Natalia	130.00	N
					199-36-6299.25-860-191000					
043992	10-16-2020	09290	JEFF ZUNKER SPECIA DISTRICT WIDE		110-01	AE2015209	C	INDOOR AIR QUALITY INS	526.00	N
					199-00-2111.20-000-100000					
044094	10-30-2020	09292	Kenneth Lee Kneupper	ATHLETICS	210599	VB 10/19/20	C	VB Official 10/19 Cole	150.00	N
					199-36-6299.21-860-191000					
044103	10-30-2020	09293	Colton Mitchell	ATHLETICS	210602	FB 10/22/20	C	FB Official 10/22 Karnes City	130.00	N
					199-36-6299.25-860-191000					
044106	10-30-2020	09294	Gilberto Rangel	ATHLETICS	210636	FB 10/24/20	C	FB Official 10/24 Karnes City	120.00	N
					199-36-6299.05-860-191000					
044099	10-30-2020	09295	Johnny Losoya	ATHLETICS	210637	FB 10/24/20	C	FB Official 10/24 Karnes City	120.00	N
					199-36-6299.05-860-191000					
044083	10-30-2020	09296	Jimmy E De Jesus	ATHLETICS	210638	FB 10/24/20	C	FB Official 10/24 Karnes City	120.00	N
					199-36-6299.05-860-191000					
044081	10-30-2020	09297	Cole ISD Athletic Dept	ATHLETICS	210642	CC ENTRY FEE	C	CC Meet Entry Fee	160.00	N
					199-36-6412.17-860-191000					
044085	10-30-2020	09298	FAMILY AND CONSUM DAY CARE		210653	REGISTRATION	C	Childcare Training Conf	120.00	N
					199-61-6411.00-800-199000					
Grand Total:									253,786.13	

Crystal Cedillo, Tax Assessor-Collector

Monthly Statement of Ad Valorem Collections

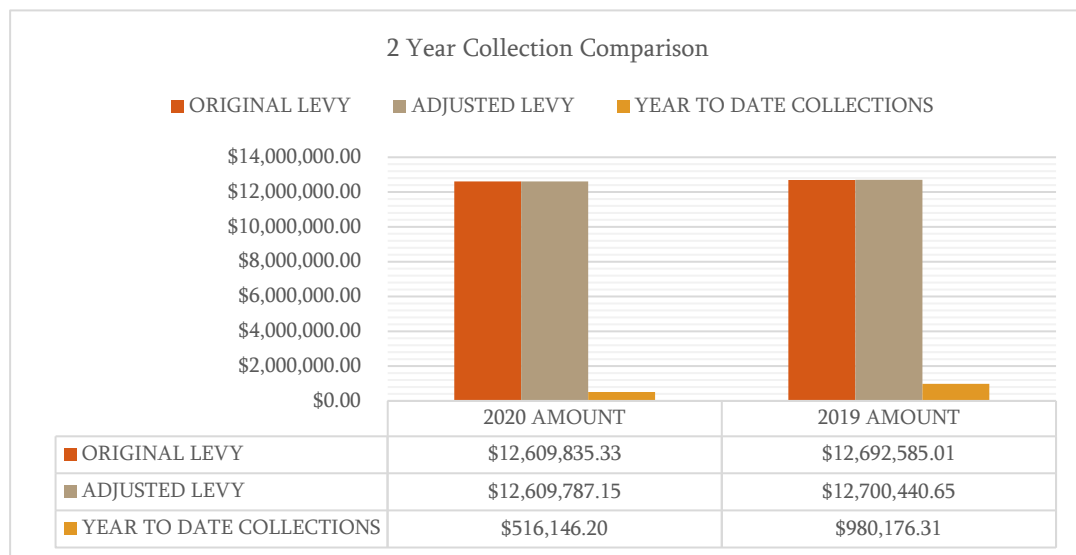
October 2020

MONTHLY COLLECTIONS		
CURRENT TAX	\$516,148.38	
PENALTY & INTEREST ON CURRENT	\$0.00	
PRIOR YEAR DELINQUENT TAXES	\$11,646.72	
PENALTY & INTEREST ON DELQ	\$4,181.00	
TOTAL COLLECTED	\$531,976.10	

FEES		
5% RENDITION PENALTY TO APPRAISAL DISTRICT	\$14.40	
1% COMMISSION TO GONZALES COUNTY	\$ 5,319.77	
BALANCE DUE NIXON-SMILEY CISD	\$526,641.93	

ACH DEPOSIT LISTING	M & O	I & S
15-Oct	\$59,747.77	\$10,076.85
25-Oct	\$163,137.46	\$27,654.09
30-Oct	\$227,711.68	\$38,314.08
TOTAL DISBURSEMENTS	\$450,596.91	\$76,045.02

LEVY SUMMARY	2020 AMOUNT	2019 AMOUNT
ORIGINAL LEVY	\$12,609,835.33	\$ 12,692,585.01
ADJUSTED LEVY	\$12,609,787.15	\$ 12,700,440.65
YEAR TO DATE COLLECTIONS	\$516,146.20	\$ 980,176.31
% OF CURRENT ROLL COLLECTED	4.09%	7.72%
YTD DELINQUENT COLLECTIONS	\$47,219.20	\$ 27,922.93



Regular
Monday, October 19, 2020 7:00 PM

Nixon-Smiley HS Library
800 N Rancho Rd
Nixon, TX 78140

1. **Establish quorum, call to order** - The meeting was called to order by President Richard Lott, with Jimmy Newman, William Griffin, Bud Box, Aly Tschoepe, Mark Mendez and Lester Warzecha were present. Superintendent Cathy L. Lauer, and Special Programs Director Jane Dwyer, Director of Business and Operations Jeff Van Auken, and Central Office Manager Cindy Lott, and Director of Technology Sarah Loer were present.
2. **Pledges** - The pledges were recited.
3. **Zoom presentation by William Filla, FCCLA representative** - William Filla serves as the Region V Vice President of Achievement for the Texas Association of Family, Career, and Community Leaders of America and represents his school and community.
4. **Citizen's communication** - none
5. **Curriculum and student achievement updates - District & Campus Improvement Plans**
MOTION: **B. Box seconded by A. Tschoepe** that the Board approve the Campus and District Improvement Plans as presented. All voted aye.
6. **Safety update - District Audit Report (DAR)** – Jane Dwyer reviewed the findings to the Board.
7. **Administrative reports / consent agenda**
MOTION: **B. Griffin seconded by L. Warzecha** that the Board approve the consent agenda as presented. All voted aye.
 7. a. Finance report – The Board reviewed the accounts payable as presented.
 7. b. Tax collector's report – Total collections for September 2020: \$47,733.43; Commissions: \$477.34; Collected thru September 2020: \$12,495,335.90 or 98.47%
 7. c. Minutes from previous board meetings – The Board approved September 14, 2020 regular meeting.
 7. d. Cafeteria report – 21 days total lunches for September 2020: \$13,966; breakfast \$15,932; combined total \$85,849.04
 7. e. ADA report – September 2020 – 1,027 students compared to September 2019 - 1,080 students
8. **Designate fund balance**
MOTION: **B. Box seconded by B. Griffin** that the Board designate funds as presented. All voted aye.
9. **Budget amendment on revenue**

MOTION: J. Newman seconded by L. Warzecha that the Board amend the 2020-21 budget for reason shown. All voted aye.

10. **School Health Advisory Council (SHAC)**

MOTION: M. Mendez seconded by A. Tschoepe that the Board approve the 2020-21 SHAC committee members as presented. All voted aye.

11. **Approve the 2020 tax roll**

MOTION: B. Griffin seconded by A. Tschoepe that the Board approve the 2020 tax roll as submitted by Crystal Cedillo, Gonzales County Tax Assessor and Collector. All voted aye.

12. **Employment reviews** – The Board reviewed the resignations of Kassandra Perez, Janette Dominguez, and Sarah De Leon.

13. **Adjourn – 7:39pm**

Board President

Secretary

NSLP Claim For Reimbursement Summary

00418 Status: Active
NIXON-SMILEY CONS ISD
 DBA:
 800 RANCHO RD
 NIXON, TX 78140-0400
 County District Code: 089-903
 ESC: 13 TDA Region: 3

Confirmation #: FABFBB

Month/Year Claimed	Adjustment Number	Date Received	Date Accepted	Date Processed	Reason Code
Oct 2020	0	11/03/2020	11/03/2020		Original

Contracting Entity Totals

Meal Type	Meals/Supplements Served	Federal Rate	Reimbursement Federal Amount
National School Lunch Program			
Free	16,908	3.5300	59,685.24
Reduced	0	3.1300	0.00
Paid	280	0.3500	98.00
Total	17,188		59,783.24
Performance-Based Reimbursement (Lunch)			
Claimed	17,188	0.0700	1,203.16
Adjusted	0	0.0700	0.00
Total	17,188		1,203.16
School Breakfast Program Severe Need			
Free	18,900	2.2600	42,714.00
Reduced	0	1.9600	0.00
Paid	348	0.3200	111.36
Total	19,248		42,825.36
Afterschool Care Program - Area Eligible			
Free	945	0.9600	907.20
Total	945		907.20

Claim Reimbursement Total **104,718.96**

Contracting Entity Claim Reimbursement Totals

Current Claim Reimbursement Total	104,718.96
Previous Claim Reimbursement Total	0.00
Net Claim Reimbursement Total	104,718.96

Show Site Meal Details

MEMO

TO: Cathy Lauer
FROM: Lacy Boatright
SUBJ: October ADA
DATE: November 02, 2020

Listed below is district attendance information for the month of October 2020, as well as enrollment comparison information for the **last day** of October '19, October '18, October '17 and October '16.

October 2020				PREVIOUS YEARS ADA%			
CAMPUS	AVERAGE ENROLLMENT	ADA	ADA%	2019	2018	2017	2016
High School	286.76	267.76	93.37%	95.70	94.13	94.33	95.19
Middle School	299.05	286.90	95.94%	95.74	96.25	97.12	96.46
Elementary	395.50	378.48	95.69%	95.66	95.94	95.93	96.78
DAEP <small>(NS students only)</small>	-----	-----	-----	96.55	91.03	90.14	85.14
DAEP Level III <small>(NS students only)</small>	-----	-----	-----	-----	1.00	89.74	-----
PACE	1.29	1.24	96.30%	94.59	-----	83.33	-----
DISTRICT	982.60	934.38	95.09%	95.72	95.51	95.80	96.17

ENROLLMENT COMPARISON – (Last day of month)																
GRADE LEVELS																
Enrollment	EE	PK	K	01	02	03	04	05	06	07	08	09	10	11	12	TOTAL
Oct. '20	0	75	73	70	68	77	68	63	87	70	78	72	78	63	73	1015
Oct. '19	0	109	71	71	72	69	63	94	72	86	75	84	78	72	57	1080
Oct. '18	2	103	73	71	69	69	87	68	84	74	79	88	76	60	67	1070
Oct. '17	4	95	69	65	68	83	67	84	72	78	87	82	64	74	82	1074
Oct. '16	1	79	67	67	78	64	81	80	81	88	80	76	74	76	79	1071

9 pre-k non qualifiers*

GOVERNANCE CAMP

POWERED BY
STUDENT VOICE

MARCH 3-6, 2021

GALVESTON CONVENTION CENTER • GALVESTON, TEXAS



[TASB.ORG/GOV-CAMP](https://tasb.org/gov-camp)

KICKING OFF GOVERNANCE CAMP!

It's time for Governance Camp! Don't worry—you won't need to pitch a tent on the beaches of Galveston, and bug spray and sunscreen won't be necessary. Whether you join us in person or virtually, you will still enjoy the fantastic content focused on student voice, leadership, and governance you've come to expect from this one-of-a-kind annual conference.

In addition to sessions focused on governance issues and best practices, Camp offers the unique opportunity to attend with Texas students, who come ready to share their educational experiences, opinions, and ideas to help guide your work as a trustee.

The idea of Camp is that you will grow as a leader,

leaving the conference refreshed and ready to head home with new ideas and tools, looking forward to coming back again next year to see the familiar faces of trustees from around the state you connected with during your time here.

While we hope to gather in person, we also are making secondary plans to bring Camp directly to you in your own home. We may not be able to swap stories while eating s'mores together in Galveston, but rest assured by the end of the conference, whether we are together in person or online, you'll walk away inspired having fully experienced Governance Camp.

Visit tasb.org/gov-camp for the latest updates!

AGENDA

WEDNESDAY, MARCH 3

Preconference Registration	1-2 p.m.
Preconference Session	2-5 p.m.
Regiception	5-6 p.m.

THURSDAY, MARCH 4

Breakfast	7:30-8:30 a.m.
General Session	8:30-9:45 a.m.
Breakout	10-11 a.m.
Breakout	11:15 a.m.-12:15 p.m.
Lunch	12:30-1:30 p.m.
Breakout	1:45-2:45 p.m.
Breakout	3-4 p.m.
Reception	4-5 p.m.

FRIDAY, MARCH 5

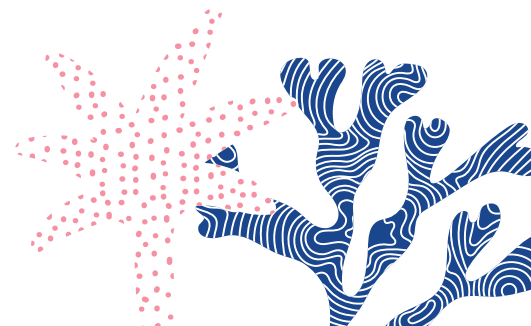
Breakfast	7:30-8:30 a.m.
General Session	8:30-9:15 a.m.
Breakout	9:30-10:30 a.m.
<i>Students Inspired</i>	10:30-11:15 a.m.
Breakout	11:15 a.m.-12:15 p.m.
Lunch	12:15-1:15 p.m.
Breakout	1:30-2:30 p.m.
<i>Spotlight Sessions</i>	2:30-3:15 p.m.
General Session	3:30-4:30 p.m.

SATURDAY, MARCH 6

Breakfast by the Bay	7:30-8:30 a.m.
COVID-19: Back to the Future	8:30-11 a.m.

PROFESSIONAL HEAD SHOTS

On Thursday, March 4, 7-7:30 a.m., TASB Media Services will be on hand to take professional head shots free of charge for those interested to use in press releases, campaign literature, and other publications.



GENERAL SESSION SPEAKERS

THURSDAY, MARCH 4

MAWI ASGEDOM, award-winning author and expert on social emotional learning (SEL), has inspired millions with his journey as an Ethiopian refugee turned Harvard graduate and pioneering social entrepreneur.



By applying SEL skills to set goals, build relationships, and grow academically, Mawi overcame the odds, as told in his bestselling book *Of Beetles and Angels*.

Mawi's ability to inspire led Oprah Winfrey to call her

interview with him one of her top 20 moments in 20 years.

Since delivering the commencement speech to his graduating class at Harvard, Mawi has spoken to over one million people about the transformational power of SEL.

In 1999, he founded Mawi Learning, which provides online and blended SEL curriculum for K-12 students and educators. Under Mawi's leadership, Mawi Learning won the prestigious CODiE Award for achieving excellence and innovation in educational technology and achieved CASEL-designation for evidence-based SEL. Mawi Learning has trained more than a million students and educators in 12 countries.

FRIDAY, MARCH 5

ANINDYA KUNDU, Ph.D., studies the concepts of agency and human potential. He examines the social contexts, educational systems, and opportunity structures that create positive change in people's lives. Anindya's research is rooted in amplifying student voice to create more equitable systems of opportunity.

Anindya is a senior fellow at the City University of New York, Graduate Center. He received a school-wide Outstanding Teaching Award while at New York University, where he also received his Ph.D. He taught storytelling to high school students through The Moth non-profit for a brief time.

Anindya has frequently contributed to public discourse on education. His work has appeared on NPR Education

and his two TED Talks each have more than one million views. As he puts it, "There is intellectual talent going uncultivated in our communities. If we treat education as our greatest public responsibility, more students can be capable of great things and we can better tackle the social problems that lie ahead, together."

His debut book, *The Power of Student Agency*, was released in 2020.



KEY SESSIONS

WEDNESDAY, MARCH 3

PRECONFERENCE *(included in registration fee)*

COULD YOU LAST A MONTH IN POVERTY?

Walk a mile in the shoes of your students in this unique, interactive poverty simulation that enables you to live for a “month” in poverty. This session, back again this year by popular demand, promises to be impactful and will include group discussion about the challenges your students and their families face and how that can factor into your board’s work.

FRIDAY, MARCH 5

10TH ANNUAL STUDENT PANEL AND SCHOLARSHIP AWARD

Always the highlight of the conference, come meet and listen to the recipients of the statewide Student Voice scholarships as they share their educational experiences. This is a great opportunity to hear directly from Texas public school students, and you will no doubt be inspired and encouraged by these young minds.

SATURDAY, MARCH 6

POSTCONFERENCE *(included in registration fee)*

COVID-19: BACK TO THE FUTURE

Saturday’s interactive workshop will focus on the challenges of educating our students through the unique circumstances of COVID-19, innovative solutions from school leaders, and future forecasts from various industry experts. TASB’s Governmental Relations will provide an update on the legislative session.

This information will be presented whether we meet in person or virtually.

“ The poverty simulation exercise facilitated by TASB caused an emotional response to the obstacles to instruction for students who experience a life constantly on the edge of crisis. You cannot shake the powerful feeling of this experience; nor should you. ”

—JAMES HOPPER, SUPERINTENDENT, VENUS ISD

EVENT SPONSORS



WALSH GALLEGOS*
TREVINO RUSSO & KYLE P.C.

*Exclusive sponsor of Student Voice

QUESTIONS?

Visit tasb.org/gov-camp for details, or contact TASB at **800.580.8272**.

- Housing—email mandy.begley@tasb.org
- Registration—email registrar@tasb.org
- Additional questions—email kathy.dundee@tasb.org

SPECIAL NEEDS?

Would you like us to address any special needs? If so, let us know by February 19, to allow time to make needed arrangements. Call us at 800.580.8272, extension 2461, or send an email to mandy.begley@tasb.org.

STUDENT VOICE

A CONVERSATION ABOUT EDUCATION

SPONSORED BY WALSH, GALLEGOS, TREVIÑO, RUSSO & KYLE, P.C.

Research shows that dropout rates, student achievement, and workforce readiness will improve due to increased integration of student voice in the classroom and community. Student congresses and student-led education reform movements are popping up all over the country as students actively work to influence positive change in their education experience.

In 2011, a Student Voice panel was added to the Governance Camp program, allowing attendees to hear directly from students about their experiences in Texas public schools. 2017 saw the expansion of Student Voice through the addition of student-led sessions about initiatives, projects, and other school activities to promote improved learning and showcase their educational experiences.

In increasing the presence of Student Voice, board members hear from today's students so they can better understand the students' wants and needs when making important decisions. We are pleased to continue Student Voice at our conference again this year, including:

STUDENT VOICE PANEL AND SCHOLARSHIP

Currently enrolled high school seniors are invited to participate on the Student Voice panel to receive a \$1,000 scholarship, plus a travel stipend for their participation.

The application deadline is 5 p.m., Friday, January 15, 2021.

ALL SUBMISSIONS FORMS AND ADDITIONAL INFORMATION CAN BE FOUND ON THE STUDENT VOICES LINK AT [TASB.ORG/GOV-CAMP](https://tasb.org/gov-camp).



STUDENT VOICE SESSIONS

We are seeking sessions for Friday, March 5, presented or copresented by students. Each session is one hour in length. Students can focus on:

- Student-led initiatives that have transformed their school
- Projects that have had an impact on school culture and climate
- Technology development and findings
- And more!

Submissions are due Wednesday, December 9.

Depending on travel distance, hotel cost may be picked up by TASB. Students are invited to join attendees for breakfast and lunch Friday.

STUDENTS INSPIRED BOOTHS AND SPOTLIGHT SESSIONS

We are calling on students—individuals or groups—to lead both hands-on interactive experiences or demonstrations as well as presenting a 15-minute spotlight session in an “exhibition” style setting. We’re looking for a variety of exhibits—from demos of student-designed video games, to health studies, to visual arts and music and crafts like carpentry and welding. Students should provide attendees an engaged learning experience and share how this activity has helped them improve their personal K-12 learning journeys. **Submissions are due Friday, January 15, 2021.**

Depending on travel distance, hotel cost may be picked up by TASB. Students are invited to join attendees for 50 breakfast and lunch Friday.

REGISTRATION

Online registration begins **Monday, January 25, and closes Friday, February 19.** After February 19, attendees may register on site at the conference.

Before you register online, be sure to access the complete list of session offerings posted online to determine which sessions you will submit with your registration. **Registrations will not be processed without sessions selected.**

After reviewing session offerings, complete the session selection form and return it to your superintendent or designee so that he or she may complete your registration.

To speed up the process and to ensure accuracy, register at events.tasb.org, which automatically populates individual and district information from the TASB membership database.

If you need to register on site, complete the on-site registration form before coming to the conference to help speed up the process once you arrive.

To find either the session selection packet or on-site registration form, go to tasb.org/gov-camp.

“ Governance Camp provided a variety of sessions to learn more about school board operations and public school education. Including Student Voice to hear first hand from scholars made an impactful connection on what is needed to improve academic achievement and support social emotional learning. ”

— DR. CRESLOND FANNIN, DISTRICT DIRECTOR FEDERAL AND STATE PROGRAMS, COLLEGE, CAREER & MILITARY READINESS, MANOR ISD

REGISTRATION FEE

Pick the schedule that works best for you—pay one fee! We know your time is valuable. We are sticking to the same schedule as last year and offering unique pre- and postconference sessions so you can get the most out of your Camp experience.

ALL-INCLUSIVE REGISTRATION FEE: \$395 WEDNESDAY—SATURDAY, WHICH INCLUDES:

- In-depth sessions for new and experienced board members and board officers
- Breakfast Thursday–Saturday
- Lunch Thursday and Friday
- Refreshment breaks Wednesday–Saturday
- Program materials
- Up to 16.75 hours of continuing education credit
- VIP virtual access to Thursday recorded sessions after the conference

REGISTRATION CANCELLATION

Please refer to the event website, tasb.org/gov-camp, for cancellation information.

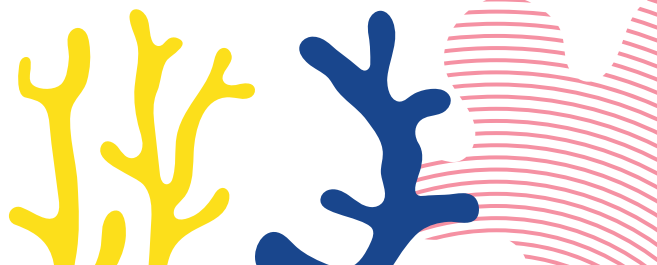
HOUSING

HOTEL RESERVATION INFORMATION

Housing opens Wednesday, January 6, 2021, at 9 a.m. CT. TASB has reserved a block of rooms at several hotels near the Galveston Convention Center, ranging in price from \$110 to \$180 per night.

View hotel options and reservation procedures at tasb.org/gov-camp.

Housing closes on Friday, January 29, 2021, at 5 p.m. CT.





"My fellow CISD trustees and I attend Governance Camp each year to learn more about what is going on in other districts and how to move forward with problem-solving. But the most exciting part of Camp is watching and listening to the students. Seeing their eyes glow while expressing their interest in different things and hearing how some of them cope with the difficulties in life—it is truly an amazing experience. All board members, both new and tenured, should experience this. I look forward to learning more from other trustees and the students we serve and as always leaving with a renewed sense of hope."

Alex Ybarra, Trustee, Channelview ISD



PHOTOS FROM FEBRUARY 2020 GOVERNANCE CAMP

ACTION

November 9, 2020

SUBJECT: Recapture Agreement for the Purchase of Attendance Credits

PRESENTED BY: Cathy L. Lauer, Ph.D.

BACKGROUND INFORMATION

For the 2020-2021 school year, we delegated contractual authority to obligate the school district under Texas Education Code (TEC) 11.1511(c)(4) to the superintendent, solely for the purpose of obligating the district under TEC, 48.257 and TEC, Chapter 49, Subchapters A and D, and the rules adopted by the commissioner of education as authorized under TEC, 49.006. This included approval of the *Agreement for the Purchase of Attendance Credit or the Agreement for the Purchase of Attendance Credit (Netting Chapter 48 Funding)*.

ADMINISTRATIVE CONSIDERATION

The Administration will review the information and make a recommendation to the Board.

BOARD ACTION REQUESTED

Review the information presented and discuss any item(s) requiring clarification.

MOTION: “I move that the Board approve the recapture agreement for the purchase of attendance credits as presented.”

Motion _____ Second _____ Results _____

Approve/Disapprove

Agreement for the Purchase of Attendance Credit

This agreement is entered into pursuant to the Texas Education Code (TEC), Chapter 49, Subchapters A and D, and rules adopted by the commissioner of education as authorized by the TEC, §49.006. The purpose of this agreement is to enable the district to reduce its local revenue level to a level not to exceed the level established under TEC, §48.257 for the school year.

The school year to which this agreement applies is 2020-2021 (the "school year").

The agreement is for Nixon-Smiley C.E.S.D School District ("the district"), with a county-district number of 089-903, to purchase attendance credit from the state for the school year.

This agreement is subject to the approval of the voters of the district as provided by the TEC, §49.156. The board of trustees of the district agrees to submit to the commissioner of education, on request, a certified copy of the board minutes showing the canvass of the election.

Initial payments will be based on the commissioner's estimate of the total cost of credit as determined under TEC, §49.153, using the district's projected maintenance and operations tax revenue that exceeds the level established under TEC, §48.257 for the school year. The district agrees to make the payments in accordance with the schedule specified in the TEC, §49.154.

The total cost of credit will be determined by the commissioner in accordance with the TEC, §49.153, when final data on the district's maintenance and operations tax revenue that exceeds the level established under TEC, §48.257 for the school year is available. If that amount is less than the amount paid by the district through August 15 of the school year, the difference will be refunded. If that amount is greater than the amount paid, the district shall remit an amount equal to the difference for deposit in the state treasury to be used for the Foundation School Program.

The cost of purchased attendance credit will be reduced for county appraisal district costs. The reduction will be computed in accordance with the TEC, §49.157. If the reduction exceeds the cost for the school year, the difference will be carried forward and applied to each subsequent year's cost until the total amount of the reduction has been exhausted.

Signature of President, Board of Trustees

Date: _____

Signature of Secretary, Board of Trustees

Date: _____

Signature of Superintendent

Date:

Typed Name of Superintendent

Date:

Signature of Commissioner of Education or Designee

ACTION

November 9, 2020

SUBJECT: Call Meeting to set date to Canvass Election

PRESENTED BY: Cathy L. Lauer, Ph.D.

BACKGROUND INFORMATION

An important procedural requirement following any election is the canvass of the election. The statute establishes a specific time frame after the election within which the canvass must occur. For this year the rule is no different, it cannot be later than the 11th day after the election and not earlier than the 3rd day after the election. Only two board members are required to conduct the canvass and certify the election. Notice of canvass must be posted 72 hours before conducted.

ADMINISTRATIVE CONSIDERATION

The Administration will review the information and make a recommendation to the Board.

BOARD ACTION REQUESTED

Review the information presented and discuss any item(s) requiring clarification.

MOTION: “I move that the board set the canvass date (between Friday, November

6 and Tuesday, November 17) and time to _____

_____. Board members _____ and _____

_____ will make up the canvassing board.”

Motion _____ Second _____ Results _____

Approve/Disapprove

2020-21 School Calendar Late Student Start

Board approved: 2/10/2020 Revised 7/20/2020 Dates are subject to change

(20) August 20

S	M	T	W	T	F	S
						1
2	3	4	5	6	7	8
9	*10\$	11	12	13	14	15
16	17	18	19	20	21	22
23	24	25	26\$	27	28	29
30	*31					

(21) September 20 9975

S	M	T	W	T	F	S
			(1	2	3	4
6	7	8	9	10\$	11	12
13	*14	15	16	17	18	19
20	21	22	23	24	25\$	26
27	28	29	30			(21)

(21) October 20 9775

S	M	T	W	T	F	S
					1	2
4	5	6	7	8	9\$	10
11	12	13	14	15	16	17
18	*19	20	21	22	23)	24
25	(26\$	27	28	29	30	31
						(21)

(16) November 20 7400

S	M	T	W	T	F	S
1	2	3	4	5	6	7
8	*9	10\$	11	12	13	14
15	16	17	18	19	20\$	21
22	23	24	25	26	27	28
29	30					(16)

(14) December 20 6450

S	M	T	W	T	F	S
			1	2	3	4
6	7	8	9	10\$	11	12
13	*14	15	16	17	18)\$	19
20	21	22	23	24	25	26
27	28	29	30	31		(14)

(19) January 21 8550

S	M	T	W	T	F	S
					1	2
3	4	(5	6	7	8\$	9
10	*11	12	13	14	15	16
17	18	19	20	21	22	23
24	25	26\$	27	28	29	(18)

Student registration - Jul 21 & 22
Coffee with Returning Substitutes - Aug.
New Teacher Training - Aug.
Staff Development/Workday (Mandatory)
 Aug. 4-31; Jan 4
First day / last day for students - Sept. 1 - May 28
Graduation - May 28 7:30pm Mustang Stadium

Students & Staff School Holidays
 September 7 - Labor Day
 October 12 - Columbus Day
 November 23-27 Thanksgiving
 December 21-31 Christmas
 January 1 New Year's Day
 January 18 - Martin Luther King Day
 February 15 - Presidents Day
 March 15-19 - Spring Break
 April 2 - Good Friday
 May 31 - Memorial Day
Bad Weather Make-up Day
 April 16; May 21
Student Only Early Release Days 7:40am - 12:15pm = 275 min
 Oct 9; Nov. 20; Dec. 18; Mar. 12; May 28 (Staff work full days)

District closed - summer vacation

Minutes per day 7:40am - 3:35pm = 475 min per day
 75,600 mandatory minutes per school year
 left corner = teacher days/right corner of month = student minutes
 bottom right corner = student days

STAAR Testing Schedule (dates are subject to change)
Dec. 8-11 - Alg. I, Bio, US History, Eng. I & Eng. II
Apr. 6 - Gr. 4 & 7 Writing; Gr 5 & 8 Math; English I
Apr. 7 - Gr. 5 & 8 Reading; English II
Apr. 8 - English II
May 4-7 - Algebra 1, Biology, US History
May 6 - Gr. 8 Science
May 7 - Gr. 8 Social Studies
May 11 - Gr. 3, 4, 6 & 7 Math; EngIII; Gr 5 & 8 Math; Eng II Retest
May 12 - Gr. 3, 4, 6 & 7 Reading; Gr 5 & 8 Reading Retest
May 13 - Gr. 5 Science; Alg II

(Grading Periods) Minutes per 9 weeks

Sep. 1 - Oct. 23 =	36	17,375
Oct. 26 - Dec. 18 =	35	16,225
Jan. 5 - Mar. 12 =	47	22,125
Mar. 22 - May 28 =	47	22,125
Total days	166	77,850

\$ Payday - 10 & 26; if falls on weekend pay on Friday
 *Board Meetings- Even months Nixon, odd months Smiley

(19) February 21 9025

S	M	T	W	T	F	S
		1	2	3	4	5
7	*8	9	10\$	11	12	13
14	15	16	17	18	19	20
21	22	23	24	25	26\$	27
28						(19)

(18) March 21 8350

S	M	T	W	T	F	S
		1	2	3	4	5
7	*8	9	10\$	11	12)	13
14	15	16	17	18	19	20
21	(22	23	24	25	26\$	27
28	29	30	31			(18)

(20) April 21 9500

S	M	T	W	T	F	S
					1	2
4	5	6	7	8	9\$	10
11	*12	13	14	15	16	17
18	19	20	21	22	23	24
25	26\$	27	28	29	30	(20)

(19) May 21 8825

S	M	T	W	T	F	S
						1
2	3	4	5	6	7	8
9	*10\$	11	12	13	14	15
16	17	18	19	20	21	22
23	24	25	26\$	27	28)	29
30	31					(19)

June 21

S	M	T	W	T	F	S
			1	2	3	4
6	7	8	9	10\$	11	12
13	*14	15	16	17	18	19
20	21	22	23	24\$	25	26
27	28	29	30			

July 21

S	M	T	W	T	F	S
					1\$	2
4	5	6	7	8	9	10
11	12	13	14	15	16	17
18	*19	20	21	22	23	24
25	26\$	27	28	29	30	31

ACTION

November 9, 2020

SUBJECT: Discuss Changing the Time and Place of Board Meetings

PRESENTED BY: Cathy L. Lauer, Ph.D.

BACKGROUND INFORMATION

Currently board meetings are held on the second Monday of each month at 7pm alternating between Nixon and Smiley.

ADMINISTRATIVE CONSIDERATION

The Administration will review the information and make a recommendation to the Board.

BOARD ACTION REQUESTED

Review the information presented and discuss any item(s) requiring clarification.

MOTION: "I move that the Board approve changing the time and place of the board meetings as presented."

Motion _____ Second _____ Results _____

Approve/Disapprove

INFORMATION

November 9, 2020

SUBJECT: Employment Considerations

PRESENTED BY: Cathy L. Lauer, Ph.D.

BACKGROUND INFORMATION

Board Policy pages DAB (LOCAL), DC, DC (LOCAL), DD (LOCAL), DDA, and DDA (LOCAL) outline hiring professional personnel. Board Policy pages DOAA and DOAA (LOCAL) outline policy regarding professional employees' resignations.

ADMINISTRATIVE CONSIDERATION

The Administration receives applications from individuals who are seeking employment in the District. The superintendent and principals check references of prospective employees and conduct interviews with applicants. Based on the references and interviews, recommendations are made to the Board.

1. Antonio Flores - maintenance
2. Bernice Gonzales – cafet cook

Employee resignations received by the Administration are also presented to the Board for consideration.

1. Michael Hurley – HS coach
2. Sherry Hurley – HS teacher

BOARD ACTION REQUESTED

That the Board hear the report, discuss item(s) requiring clarification and provide guidance and direction for the Administration.

Nixon-Smiley CISD
Employment Recommendation

*This form must be completed and approved by the Superintendent
for all positions or changes in employment status*

Part I. To be completed by person making recommendation

Name of applicant: Antonio Flores

Position: Grounds/Maintenance Dept /campus: Grounds

Is this person certified for this position? Yes No Not required

Is this person highly qualified for this position? Yes No Not required

If no, explain terms of employment (ie, a deficiency plan will be obtained, TeXes test will be taken, etc.):

Position is a: New position Replacement for: Allen Kahn

This applicant was interviewed by: Jeff Van Auken/Bobby Newman

References were checked and kept by: Jeff Van Auken

Recommended by: Jeff Van Auken Date: 9-14-20

Part II. To be completed by business office

- | | |
|--|--|
| <input checked="" type="checkbox"/> NSCISD Application | <input checked="" type="checkbox"/> Copy of teaching certificate |
| <input checked="" type="checkbox"/> HS/College transcripts as applicable | <input checked="" type="checkbox"/> Fingerprint complete |
| <input checked="" type="checkbox"/> Local Assessment Administered | <input checked="" type="checkbox"/> Criminal history check |
| <input checked="" type="checkbox"/> Physical exam (if required) | |

Notes:

This section completed by:  Date: 9-28-20

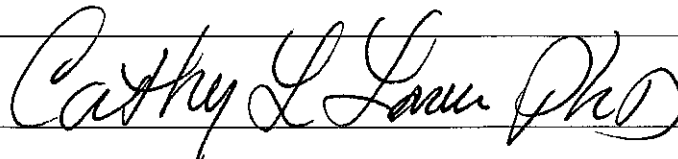
Part III Superintendent's Conference

Applicant start date: 09-23-2020 Salary: Based on market rate.

Budget Codes:

Notes:

Signature:



Date:

11/5/2020

Employment Recommendation

This form must be completed and approved by the Superintendent for all positions or changes in employment status.

Part I. To be completed by person making recommendation

Name of applicant: Bernice Gonzalez

Position: Cook - Nixon

Dept /campus: Cafeteria

Is this person certified for this position? Yes No Not required

Is this person highly qualified for this position? Yes No Not required

If no, explain terms of employment (ie, a deficiency plan will be obtained, TeXes test will be taken, etc.):

Position is a: New position Replacement for: Tina Pena (promoted to mgr)

This applicant was interviewed by: Lora Torres

References were checked and kept by: Lora Torres

Recommended by: Jeff Van Auken Date: 10-16-20

Part II. To be completed by business office

NSCISD Application

Copy of teaching certificate

HS/College transcripts as applicable

Fingerprint complete

Local Assessment Administered

Criminal history check

Physical exam (if required)

Notes:

This section completed by: [Signature] Date: 10/26/2020

Part III Superintendent's Conference

Applicant start date: 10-26-2020 Salary: Based on Cafeteria Base Rate.

Budget Codes: _____

Notes: _____

Signature: Cathy L. Lauer PhD

Date: 11/5/2020

Board of Education

10/29/2020

Nixon-Smilely CISD

I regret to inform you that I must resign from my position as science teacher at Nixon-Smilely High School due to health concerns, effective immediately. I sincerely appreciate the opportunity I have had to work for this district.

Sherry A. Hurley
Sherry Hurley

*accepted
Cathy L. Lauer
10/29/2020*

Board of Education

10/29/2020

Nixon-Smiley CISD

I regret to inform you that I must resign from my position as a coach and history teacher at Nixon-Smiley High School due to health concerns, effective immediately. I sincerely appreciate the opportunity I have had to work for this district.



Michael Hurley

*Accepted
Cathy & Lauren
10/29/2020*