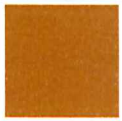

SNOOK EL



Community and Parental Involvement

Evaluation Criteria:

- Number of campuses with active PTO/PTA
- Number of campus programs engaging parental and community members (IE. meet the teacher, open house, food drives, etc)
- Number of opportunities to highlight student success (banquets, awards programs, etc)
- Number of events honoring community members (veterans day, etc)
- Number of parental and community mentors or mentor programs
- Usability and information of campus website
- Student council community outreach programs
- Number of attendees at extracurricular events
- Use of social media to communicate with community and parents



Wellness & Physical Education

Evaluation Criteria:

- Number of Health and P.E. Course Offerings
- SHAC Involvement
- Cafeteria Offerings and Quality
- Participation from community at school sponsored events
- Student participation in school breakfast/lunch program
- Students access to recess opportunities
- Availability of school nurses
- Health screenings on campus
- Availability of school counselors
- Anti- Bullying Programs and lessons
- Summer Feeding Program
- Fitnessgramm



Dropout Prevention

Evaluation Criteria:

- Positive behavior systems
 - Staff development geared toward Classroom management
 - Character education courses
-

- Reading programs (AR)
- Anti-Bullying programs
- Availability of school counselors
- Special needs identification
- Proper IEP implementation
- RTI programs
- School climate/culture surveys
- Early Childhood education and remediation programs