

INTRODUCING COVID-19 POOLED TESTING IN OUR SCHOOLS

February 22, 2021

Why Pooled Testing

- Proactive process to identify positive cases, including asymptomatic cases
- Alleviating angst about virus impact in schools
- Understand Coronavirus incidence in schools/town on an ongoing basis
- Encourage importance of safety measures among families out of school
- Prepare for and accelerate return to in person schooling, enhancing the education of our students

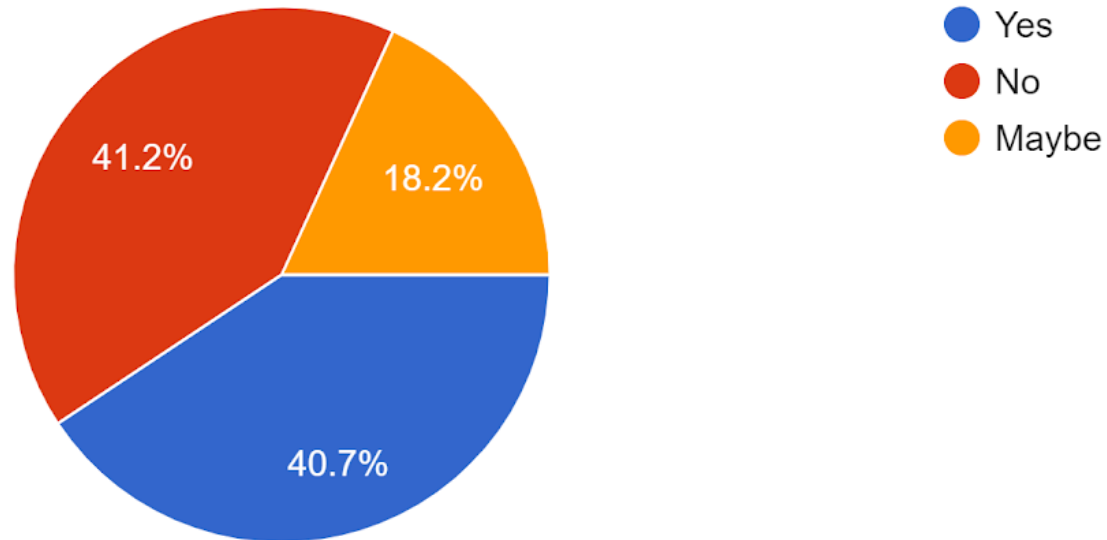
Testing is Voluntary & Free to Families

- The Massachusetts Department of Elementary and Secondary education is paying for districts to launch testing for the first six weeks
- After the first 6 weeks, we would assume the cost using COVID relief funds from one or more grants to pay for testing until it is no longer needed.

Parent Survey of Hybrid Enrolled Students

If a weekly Pool Testing Program is established, will you enroll them in the program?

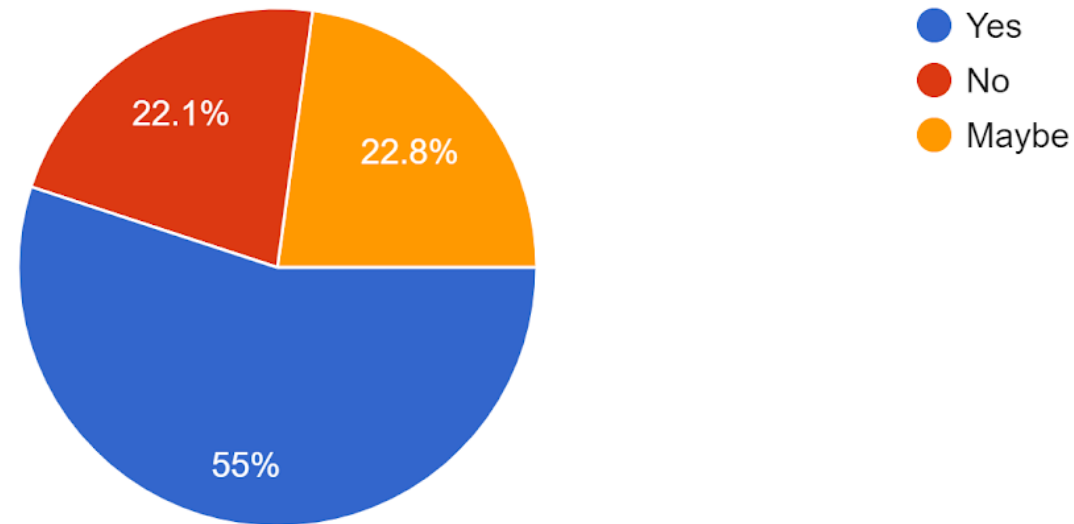
1,161 responses



Employee Survey

If the district undertakes a weekly COVID-19 pooled testing program, would you participate?

149 responses



Types of COVID-19 Tests

Diagnostic Tests

determine if the coronavirus is currently present in an individual

Antibody or Serology

tests look for antibodies in the blood to identify those who may have had the virus & developed immunity. Tests have many accuracy problems

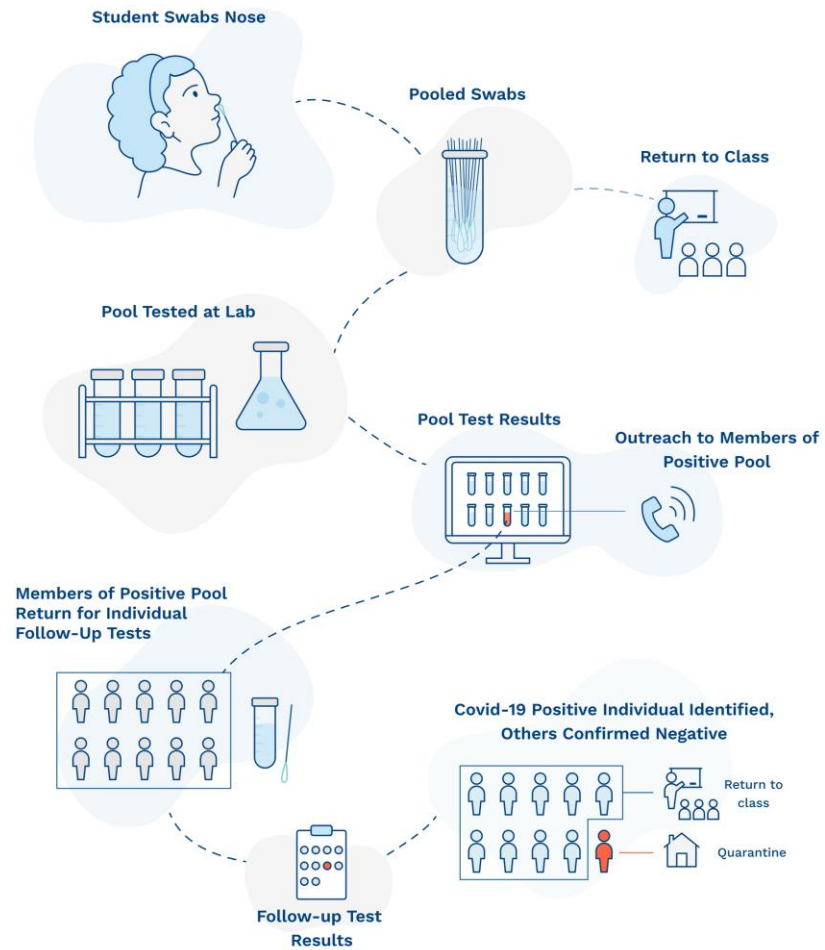
Molecular Tests

look for the virus' genetic material and are highly accurate. These tests are mostly done in a central lab and can take 24-48 hours for results. Includes both PCR and Next Generation Sequencing Tests

Antigen Tests

look for viral proteins, are less accurate than molecular tests (particularly in those with low viral loads). They can be rapid (results in minutes) and used on site without sending samples to lab

How Pooled Testing Works in Schools



For details on setting up follow-up testing, please review our [Follow-up Testing Guide](https://www.covidedtesting.org) available for download at www.covidedtesting.org

It's Painless, & Most Students Can Self-Swab



[CLICK HERE FOR VIDEO](#)

Consent to Opt your Student in to Testing

- By signing the consent form, you consent to:
 - Your student receiving a pooled test and, if needed, an individual follow-up test (BinaxNOW).
 - Acknowledgement that if your child tests positive with the BinaxNOW follow-up test, that you will seek a PCR test from through your primary care professional and/or comply with quarantine rules
 - Your student's information being transmitted via provided technology. All technology is secure and compliant with data privacy laws.

Additional Information on Who Can Participate

- Anyone who has previously tested positive for COVID-19 may participate 90 days after end of illness.
- Anyone who has already been vaccinated may participate in the program.

Once Testing Starts:

- On their assigned day, students will swab themselves or be swabbed (depending on their age and ability). The swab will be placed into a pool test tube along with swabs from other students in the pooled group.
- 24-48 hours later – pooled testing results will come to the school.
 - *If your student is in a pool that is negative, you will not hear anything*
 - *If your student is in a pool that is positive, your child will receive a follow-up test*

Follow-Up Testing

- If your student is in a positive pool, they will be asked to take a follow-up test.
- The district has sought and received approval to utilize the BinaxNOW Antigen test as its follow-up test.
- Any individuals who are included in a positive pool will receive a BinaxNOW test. Results are available in 15 minutes.
- If an individual tests negative, they return to regular school activities.
- If the individual tests positive, they will be asked to follow up with a primary care professional and subject to standard quarantine procedures.

Work to Date

- Application submitted and approved by DESE to conduct program
- Assigned CIC Health of Cambridge MA for pool testing
- Application submitted and approved to administer the BinaxNOW follow-up test
- Created portal for consent via Project Beacon
- Secured RN to conduct BinaxNOW follow-up tests
- Preliminary school-based planning complete
- Continuing communication with DESE, CIC, and CIC third party vendors

Cost (Preliminary Estimates)

- Pool Tests: \$5,300/week
- Staffing: \$2,600/ week
- Transport/Handling: \$150/ week
- Total: \$8,050 / week
- Each additional pool test participant would cost \$5/week
- DESE covers costs through March 28, 2021
- District cost from 10 March 29th through end of school year (10 weeks): \$80,500

Remaining Challenges

- Building-based establishment of each pool
- Building-based finalization of operating protocols
- Signing contract with CIC
- Consent Process
- Onboarding through Project Beacon
- Weekly management in all schools