

Return to School *in-person*

For Information and Updates

Visit our [Return to In-person School Resource Page](https://boe.jack.k12.wv.us) | boe.jack.k12.wv.us

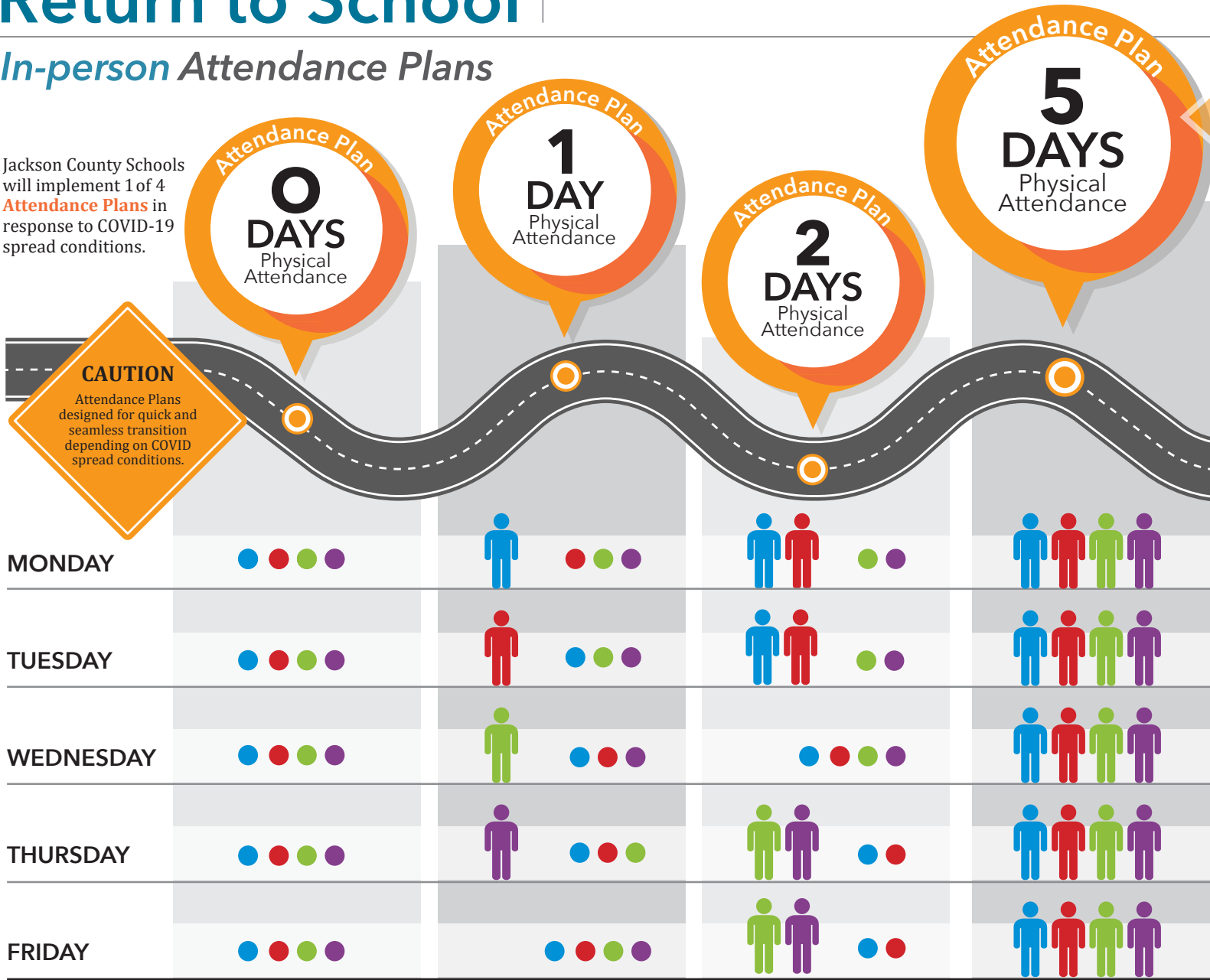
For [Virtual Program](https://boe.jack.k12.wv.us) information visit | boe.jack.k12.wv.us

For Information on Current COVID-19 Spread visit <https://dhhr.wv.gov/COVID-19>



In-person Attendance Plans

Jackson County Schools will implement 1 of 4 **Attendance Plans** in response to COVID-19 spread conditions.



CAUTION
Attendance Plans designed for quick and seamless transition depending on COVID spread conditions.

THE ULTIMATE GOAL is to safely return students and teachers to the 5-day in-person option.

Student Groups
ONE Day Attendance:
(First Letter of Last Name)

Blue A-D	Red E-K
Green L-R	Purple S-Z

Student Groups
TWO Days Attendance:
(First Letter of Last Name)

Blue/Red A-K
Green/Purple L-Z

Students choosing to attend school in-person will be assigned a color based on the **first letter of their last name**. For example, if a student's name is Maria Johnson, she will be color-coded as **RED** since all last names beginning with E - K will be assigned to the **RED** group. Maria will attend school on the days that have been assigned to **RED** students.

If your children have different last names, you should contact your child's principal(s) to request they move him or her to a different group so that both of your children attend school on the same day(s). For example, if you have a child named Maria Johnson (**RED**) and a child named Jerome Wilson (**PURPLE**), you may request that both children attend school on the same day (either **RED** or **PURPLE**).

= Remote Learning | Remote Learning provided by teacher on the days students NOT in physical attendance