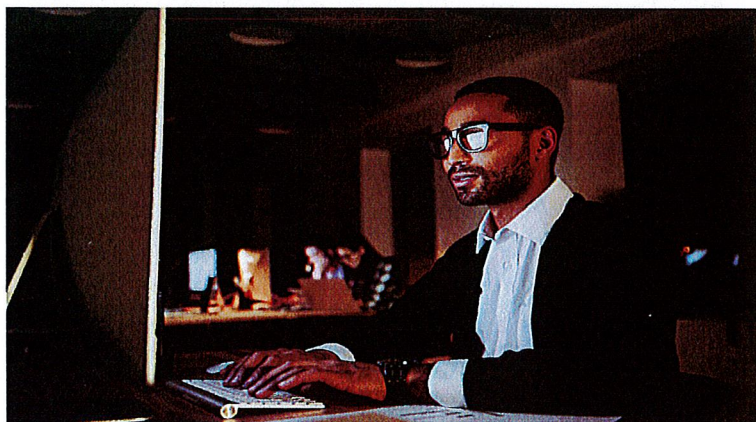




PARK FOREST CHICAGO HEIGHTS SCHOOL DISTRICT 163

RETURNING STUDENT REGISTRATION

Registration: May 1, 2022 – May 31, 2022
REGISTER ONLINE AT WWW.SD163.COM



Scan to Register

Need to know your Home School? Call 708-668-9425

Parents who do not have access to technology can register onsite at any school in the Park Forest Chicago Heights School District.



Park Forest – Chicago Heights
School District 163
242 South Orchard Drive
Park Forest, Illinois 60466
Phone: (708) 668-9427
www.sd163.com

Caletha White Ed. D.
Superintendent

April 27, 2022

Dear Parent or Guardian of a Returning Student:

It is time to register your child for the 2022-2023 school year! We have made every effort to keep the registration process simple, convenient, and safe! The information below describes the online enrollment process and identifies the documents you may need to submit. Parents, who registered last year, indicated that the online registration process took approximately 10 minutes.

As you review this information, please keep in mind the following items:

Returning Student Online Registration

The online student enrollment system is a secure and paperless process.

<https://skyward.iscorp.com/scripts/wsisa.dll/WService=wseduparkforestchil/seplog01.w>

Part of the online registration process for returning students requires payment of fees.

Registration - \$50 Student Enrichment - \$10 Field Trip - \$10

- Parents, who complete a Fee Waiver Form and are approved, will not have to pay the registration fee (\$50). All students are required to pay the fees for Student Enrichment (\$10) and Field Trips (\$10).
- Fees are waived for students whose parents are veterans or active duty military personnel with income at or below 200% of the federal poverty line.

Required Student Information

All Kindergarten and 6th grade students must submit the following documents:

- Illinois State Health Physical dated after September 1, 2021. The physical must be on the Illinois Health Examination Form; no other form will be accepted. The form must have a signature and stamp from the doctor, APN, or clinic with the BMI and Diabetes Risk Assessment done. The health history portion of the form must be completed and signed by a parent/guardian. A copy of the Illinois Health Examination Form is available on our website.
- Please note that all immunizations must be up-to-date and obtained at the appropriate intervals.

21st Century Primary Center
240 S. Orchard Drive
Park Forest, IL 60466
(708) 668-9490
Fax (708) 747-0261

Algonquin Pre-K Center
170 Algonquin
Park Forest, IL 60466
(708) 668-9200
Fax (708) 503-2267

Barack Obama School of
Leadership and Stem
401 Concord Drive
Chicago Heights, IL 60411
(708) 668-9100
Fax (708) 283-2358

Blackhawk Primary Center
130 Blackhawk Drive
Park Forest, IL 60466
(708) 668-9500
Fax (708) 481-0917

Mohawk Primary Center
301 Mohawk
Park Forest, IL 60466
(708) 668-9300
Fax (708) 748-9738

Michelle Obama School of
Technology and the Arts
530 Lakewood
Park Forest, IL 60466
(708) 668-9600
Fax (708) 503-2297

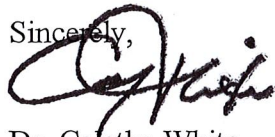
“Continuing to Build Positive and Effective Learning Communities”

All Kindergarten must submit the following documents:
Current Eye Exam Current Dental Exam

All returning students should complete the enrollment process by May 31, 2022.

*** Note proof of residency may be required for families who have returned mail or previously completed an affidavit.

Sincerely,

A handwritten signature in black ink, appearing to read "Calettha White". The signature is fluid and cursive, with a large initial "C" and "W".

Dr. Calettha White
Superintendent of Schools