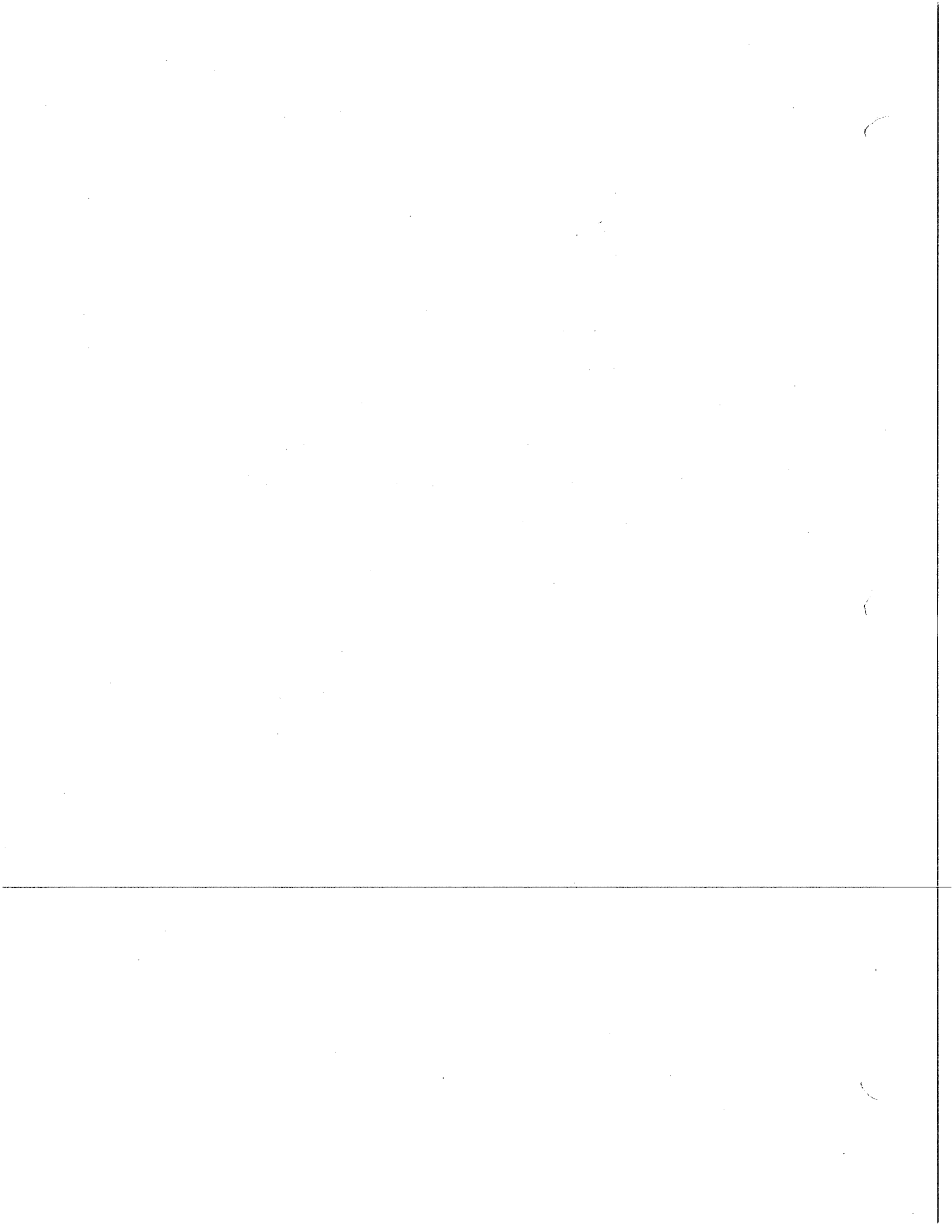


**IASB POLICY REFERENCE MANUAL
TABLE OF CONTENTS
SECTION 3 - GENERAL SCHOOL ADMINISTRATION**

3:10	Goals and Objectives
3:20	OPEN
3:30	Chain of Command
3:30-E	Exhibit - Organizational Chart for Administration
3:40	Superintendent
3:50	Administrative Personnel Other Than the Superintendent
3:60	Administrative Responsibility of the Building Principal
3:60-E	Exhibit – MHS Asst. Principal & A.D. Duties
3:70	Succession of Authority
3:70-AP	Administrative Procedure - Succession Plan



General School Administration

Goals and Objectives

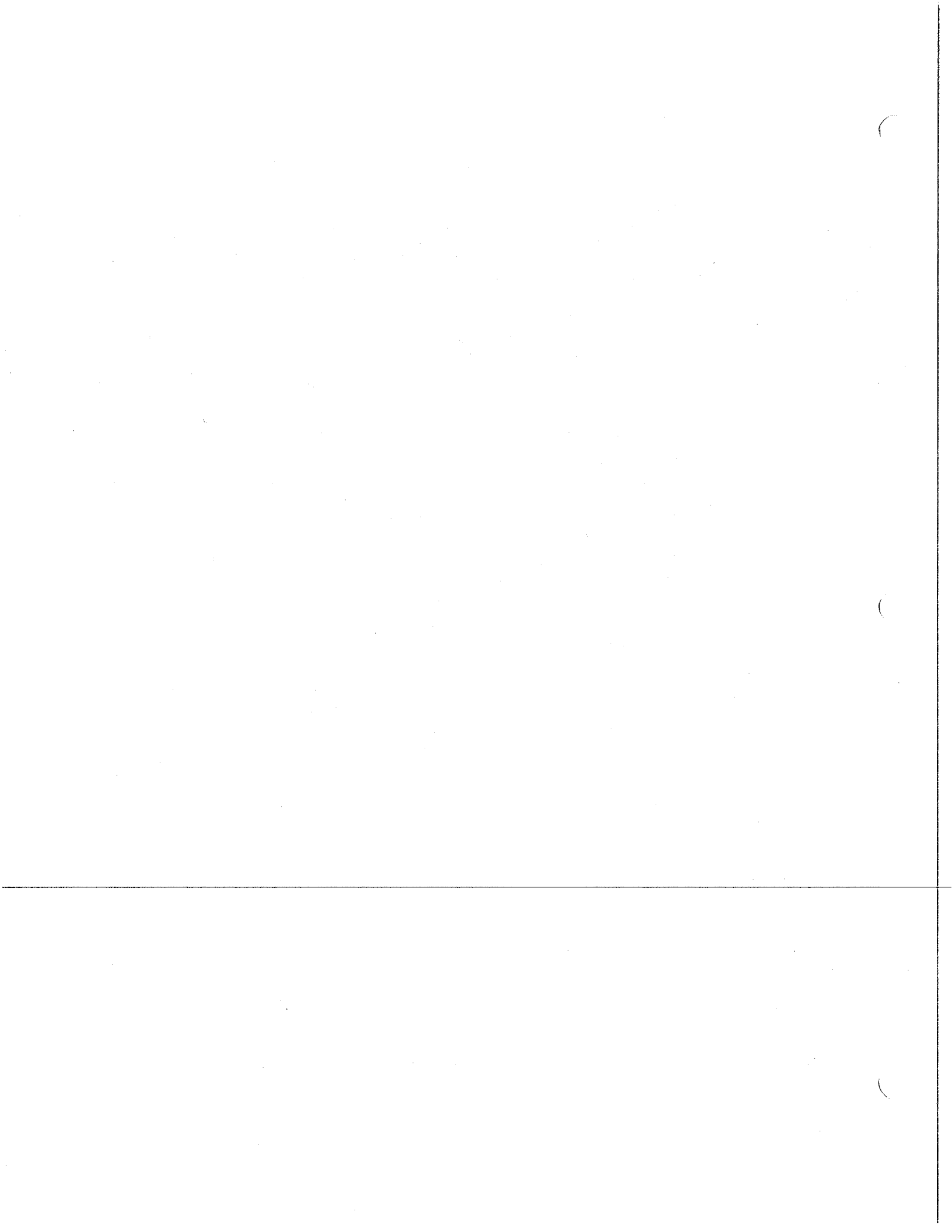
The Superintendent directs the administration in the management of the School District and to facilitate the implementation of a quality educational program in alignment with School Board policy 1:30, *School District Philosophy*. Specific goals and objectives are to:

1. Provide educational expertise.
2. Plan, organize, implement, and evaluate educational programs that will provide for students' mastery of the Illinois Learning Standards.
3. Meet or exceed student performance and academic improvement goals established by the Board.
4. Develop and maintain channels for communication between the school and community.
5. Develop an administrative procedures manual and handbooks for personnel and students that are in alignment with Board policy.
6. Manage the District's fiscal and business activities to ensure financial health, cost-effectiveness, and protection of the District's assets.
7. Provide for the proper use, reasonable care, and appropriate maintenance of the District's real and personal property, including buildings, equipment, and supplies.

LEGAL REF.: 105 ILCS 5/10-16.7, 5/10-21.4, and 5/10-21.4a.

CROSS REF.: 1:30 (School District Philosophy), 2:20 (Powers and Duties of the School Board; Indemnification), 2:130 (Board Superintendent Relationship), 3:40 (Superintendent), 3:50 (Administrative Personnel Other Than the Superintendent), 3:60 (Administrative Responsibility of the Building Principal), 6:10 (Educational Philosophy and Objectives)

APPROVED: August 8, 2019



General School Administration

Chain of Command

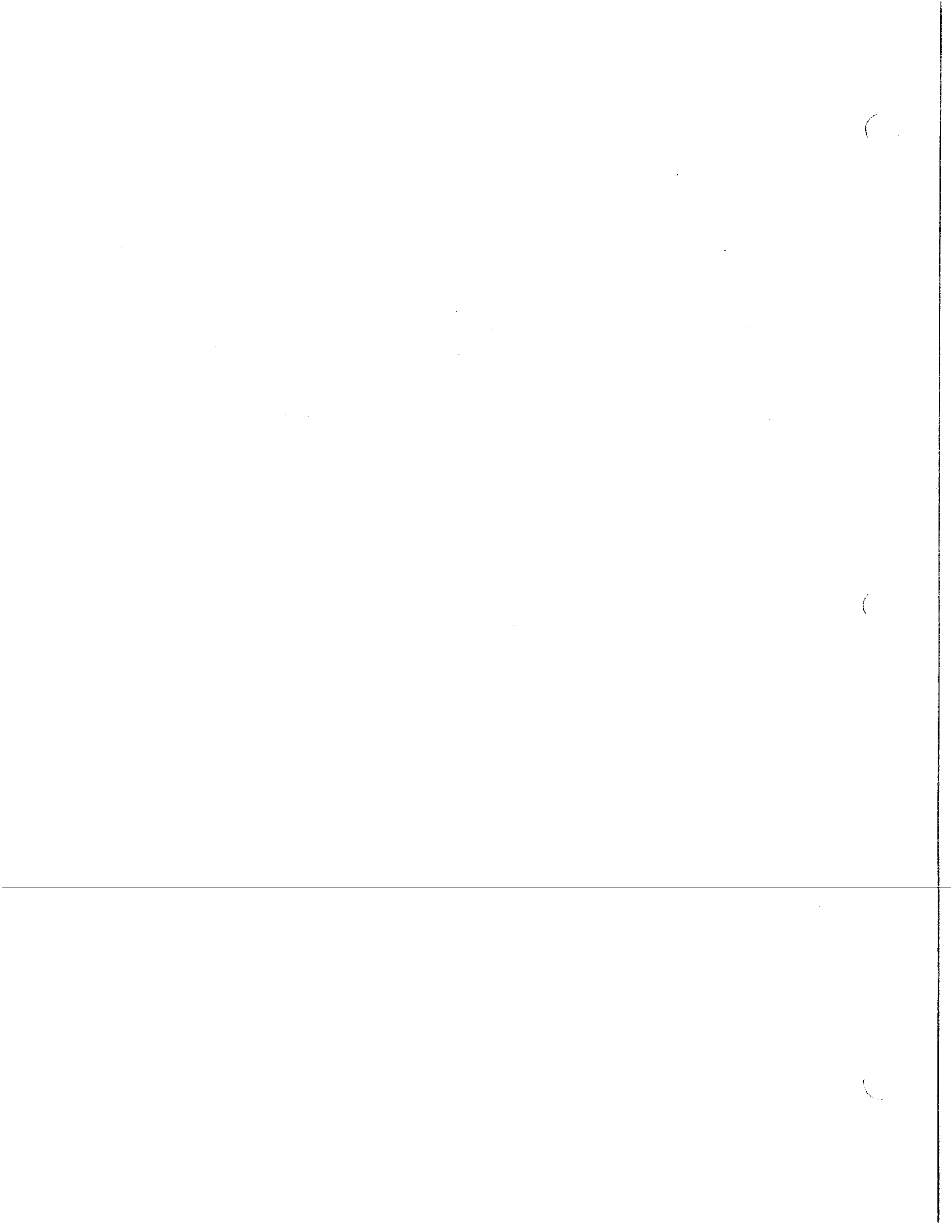
The Superintendent shall develop an organizational chart indicating the channels of authority and reporting relationships for school personnel. These channels should be followed, and no level should be bypassed except in unusual situations.

All personnel should refer matters requiring administrative action to the responsible administrator, and may appeal a decision to a higher administrative officer. Whenever possible, each employee should be responsible to only one immediate supervisor. When this is not possible, the division of responsibility must be clear.

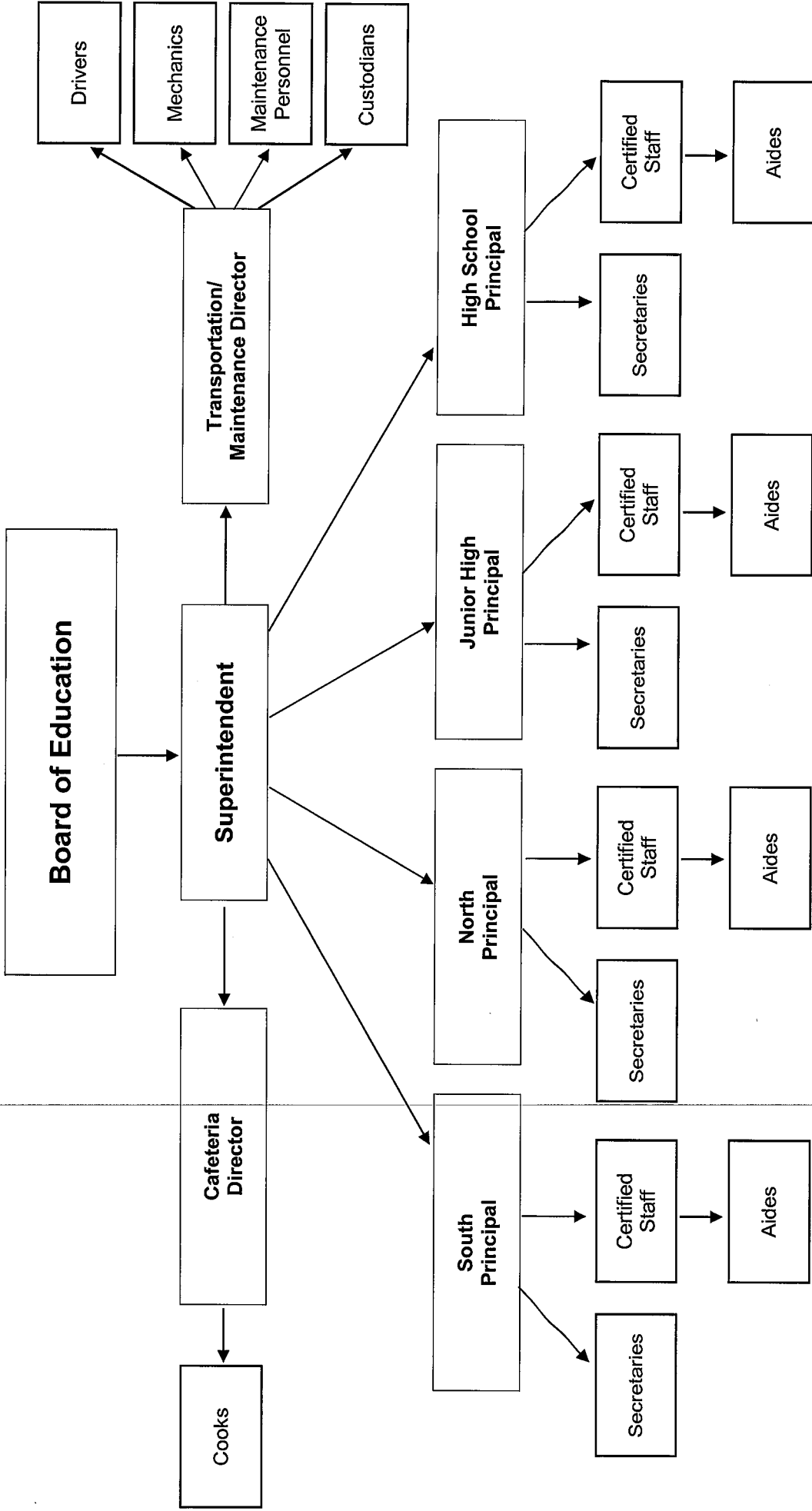
CROSS REF.: 1:20 (District Organization, Operations, and Cooperative Agreements), 2:140 (Communications To and From the Board), 3:70 (Succession of Authority), 8:110 (Public Suggestions and Complaints)

ADOPTED: May 4, 2009

See attached chart



Marshall C-2 Organizational Chart





General School Administration

Superintendent

Duties and Authority

The Superintendent is the District's executive officer and is responsible for the administration and management of the District schools in accordance with School Board policies and directives, and State and federal law. District management duties include, without limitation, preparing, submitting, publishing, and posting reports and notifications as required by State and federal law. The Superintendent is authorized to develop administrative procedures and take other action as needed to implement Board policy and otherwise fulfill his or her responsibilities. The Superintendent may delegate to other District staff members the exercise of any powers and the discharge of any duties imposed upon the Superintendent by Board policies or by Board vote. The delegation of power or duty, however, shall not relieve the Superintendent of responsibility for the action that was delegated.

Qualifications

The Superintendent must be of good character and of unquestionable morals and integrity. The Superintendent shall have the experience and the skills necessary to work effectively with the Board, District employees, students, and the community. The Superintendent must have and maintain a Professional Educator License with a superintendent endorsement issued by the Illinois State Educator Preparation and Licensure Board.

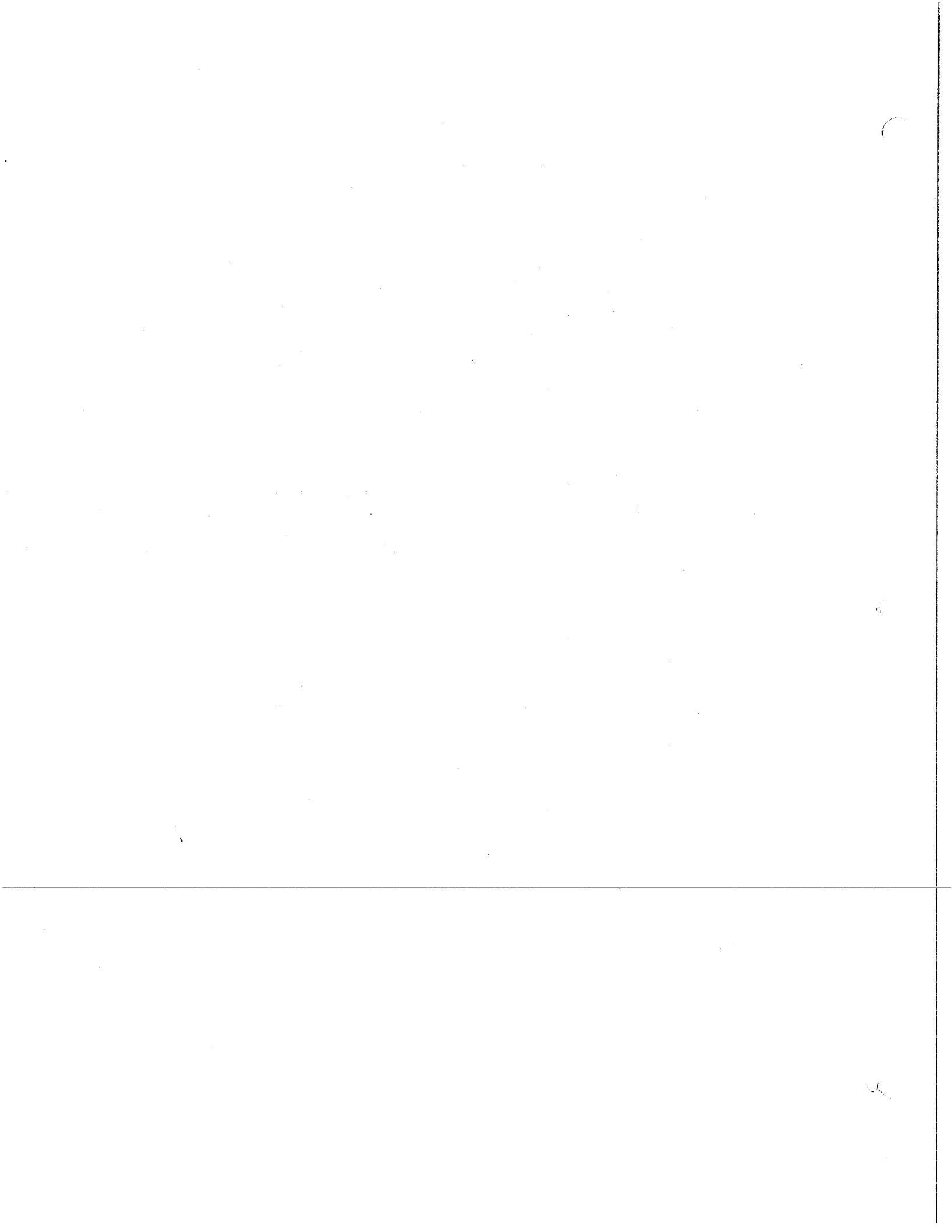
Evaluation

The Board will evaluate, at least annually, the Superintendent's performance and effectiveness, using standards and objectives developed by the Superintendent and Board that are consistent with the Board's policies and the Superintendent's contract. A specific time should be designated for a formal evaluation session with all Board members present. The evaluation should include a discussion of professional strengths as well as performance areas needing improvement.

The Superintendent shall annually present evidence of professional growth through attendance at educational conferences, in-service training, or similar continuing education pursuits.

Compensation and Benefits

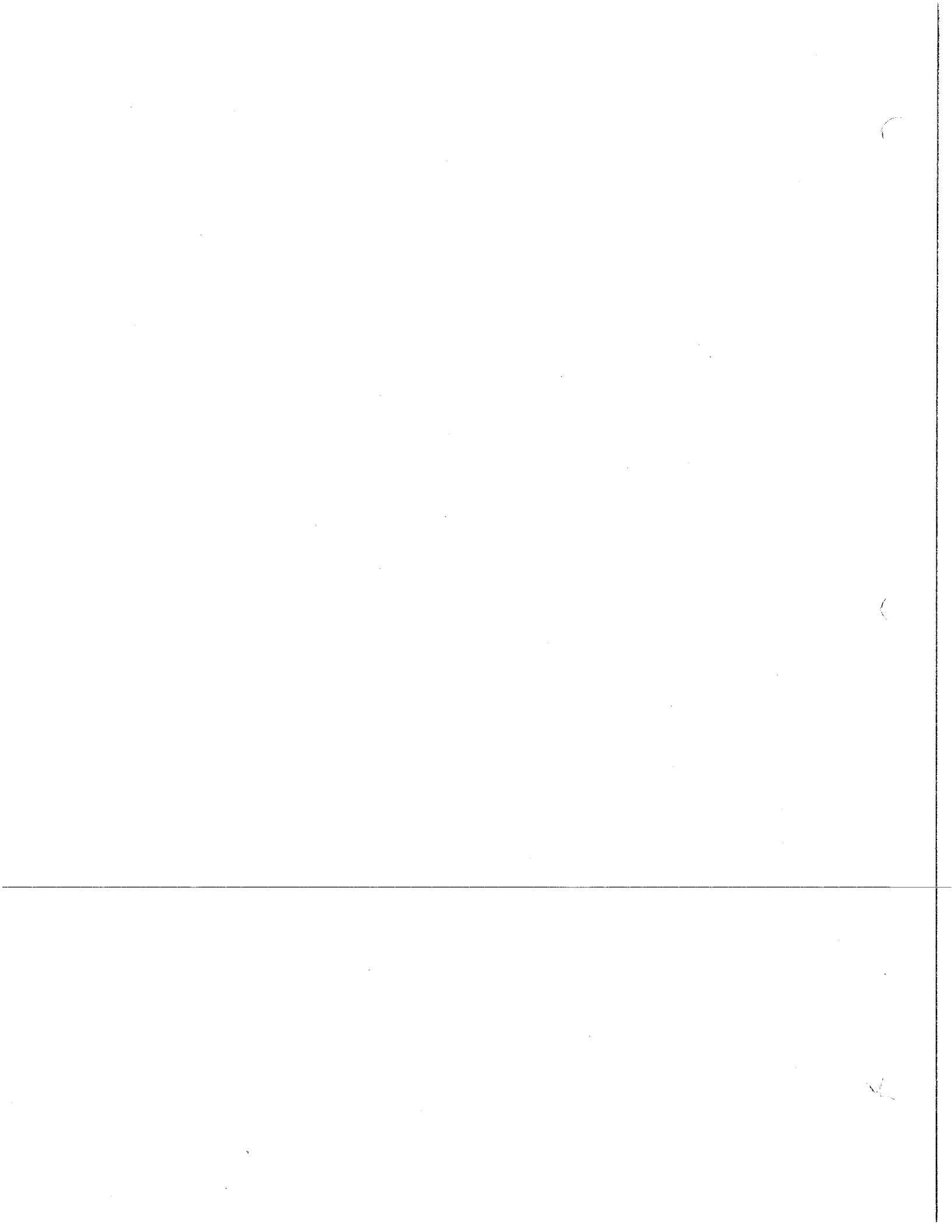
The Board and the Superintendent shall enter into an employment agreement that conforms to Board policy and State law. This contract shall govern the employment relationship between the Board and the Superintendent. The terms of the Superintendent's employment agreement, when in conflict with this policy, will control.



LEGAL REF.: 105 ILCS 5/10-16.7, 5/10-20.47, 5/10-21.4, 5/10-23.8, 5/21B-20, 5/21B-25, 5/24-11, and 5/24A-3.
23 Ill.Admin.Code §§1.310, 1.705, and 29.130.

CROSS REF: 2:20 (Powers and Duties of the School Board; Indemnification), 2:130 (Board-Superintendent Relationship), 2:240 (Board Policy Development), 3:10 (Goals and Objectives)

ADOPTED: December 8, 2016



General School Administration

Administrative Personnel Other Than the Superintendent

Duties and Authority

The School Board establishes District administrative and supervisory positions in accordance with the District's needs and State law. This policy applies to all administrators other than the Superintendent, including without limitation, Building Principals. The general duties and authority of each administrative or supervisory position are approved by the Board, upon the Superintendent's recommendation, and contained in the respective position's job description. In the event of a conflict, State law and/or the administrator's employment agreement shall control.

Qualifications

All administrative personnel shall be appropriately licensed and shall meet all applicable requirements contained in State law and Illinois State Board of Education rules.

Evaluation

The Superintendent or designee shall evaluate all administrative personnel and make employment and salary recommendations to the Board.

Administrators shall annually present evidence to the Superintendent of professional growth through attendance at educational conferences, additional schooling, in-service training, and Illinois Administrators' Academy courses, or through other means as approved by the Superintendent.

Administrative Work Year

The work year for administrators shall be the same as the District's fiscal year, July 1 through June 30, unless otherwise stated in the employment agreement. In addition to legal holidays, administrators shall have vacation periods as approved by the Superintendent. All administrators shall be available for work when their services are necessary.

Compensation and Benefits

The Board and each administrator shall enter into an employment agreement that complies with Board policy and State law. The terms of an individual employment contract, when in conflict with this policy, will control.

The Board will consider the Superintendent's recommendations when setting compensation for individual administrators. These recommendations should be presented to the Board no later than the March Board meeting or at such earlier time that will allow the Board to consider contract renewal and nonrenewal issues.

Unless stated otherwise in individual employment contracts, all benefits and leaves of absence available to teaching personnel are available to administrative personnel.



LEGAL REF: 105 ILCS 5/10-21.4a, 5/10-23.8a, 5/10-23.8b, 5/21B, and 5/24A.
23 Ill.Admin.Code §§1.310, 1.705, and 50.300; and Parts 25 and 29.

CROSS REF: 3:60 (Administrative Responsibility of the Building Principal), 5:30 (Hiring
Process and Criteria), 5:250 (Leaves of Absence)

ADOPTED: December 8, 2016



General School Administration

Administrative Responsibility of the Building Principal

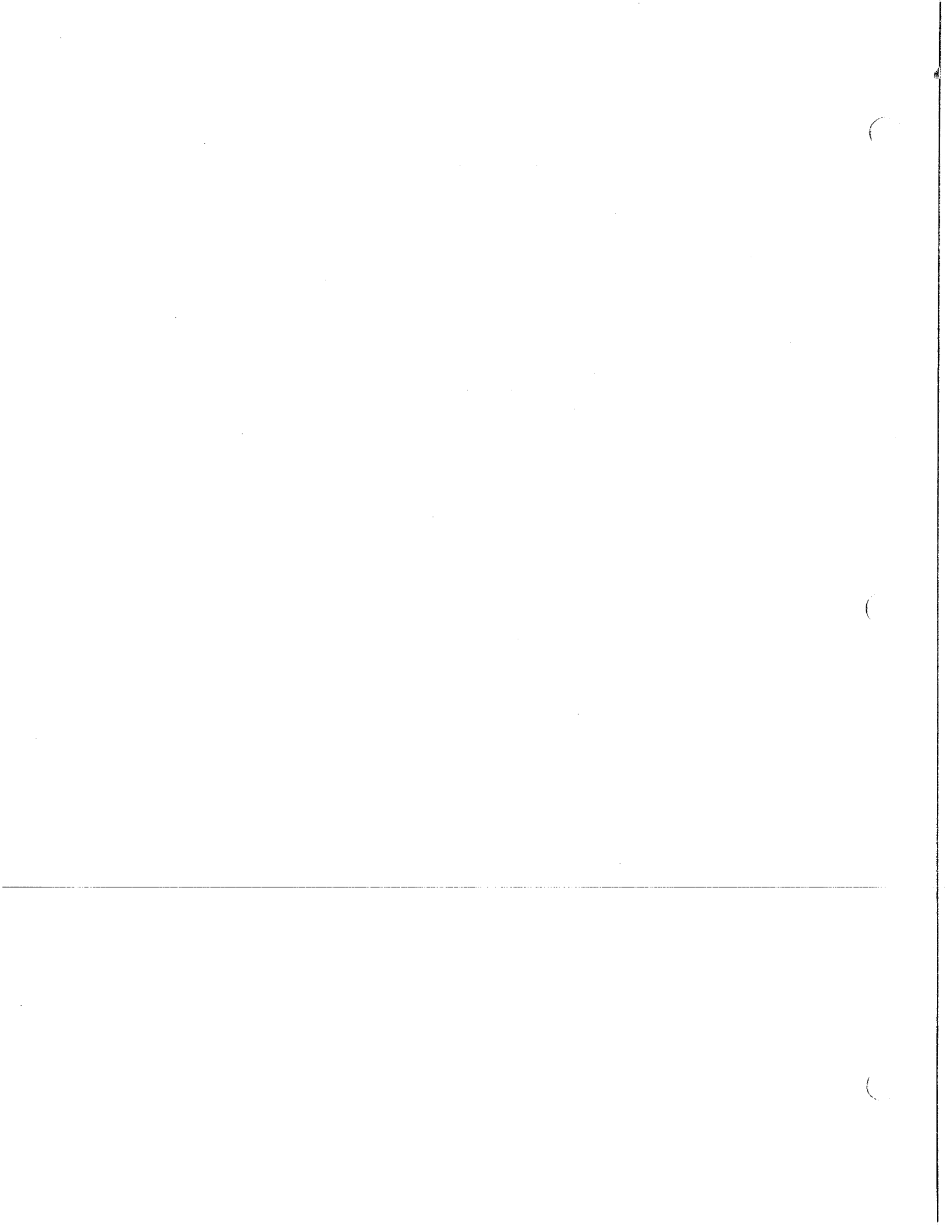
The School Board, upon the recommendation of the Superintendent, employs Building Principals as the chief administrators and instructional leaders of their assigned schools, and may employ Assistant Principals. The primary responsibility of a Building Principal is the improvement of instruction. Each Building Principal shall perform all duties as described in State law as well as such other duties as specified in his or her employment agreement or as the Superintendent may assign, that are consistent with the Building Principal's education and training.

The Board and each Building Principal and Assistant Principal shall enter into an employment agreement that conforms to Board policy and State law. The terms of an individual employment contract, when in conflict with this policy, will control.

Each Building Principal and Assistant Principal shall complete State law requirements to be a prequalified evaluator before conducting an evaluation of a teacher or assistant principal.

The Superintendent or designee shall implement an evaluation plan for Principals and Assistant Principals that complies with Section 24A-15 of the School Code and relevant Illinois State Board of Education rules. Using that plan, the Superintendent or designee shall evaluate each Building Principal and Assistant Principal. The Superintendent or designee may conduct additional evaluations.

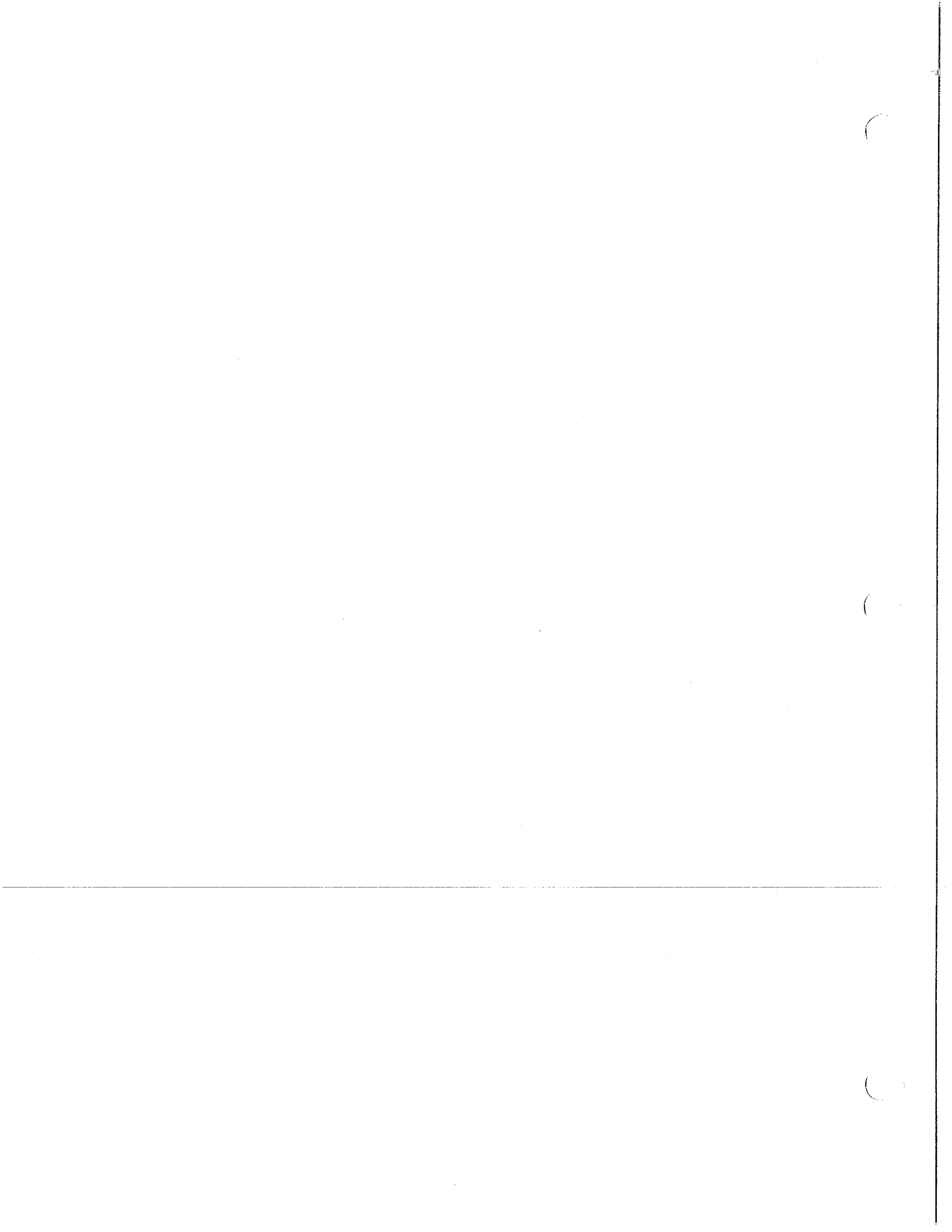
- LEGAL REF.: 10 ILCS 5/4-6.2.
 105 ILCS 5/2-3.53a, 5/10-20.14, 5/10-21.4a, 10-23.8a, 10-23.8b, and 5/24A-15.
 105 ILCS 127/.
 23 Ill.Admin.Code Parts 35 and 50, Subpart D.
- CROSS REF.: 3:50 (Administrative Personnel Other Than the Superintendent), 5:250 (Leaves
 of Absence)
- UPDATED: July 10, 2014



Marshall High School
Assistant Principal and A.D. Duties

- I. Discipline
 - a. First contact for student discipline matters
 - b. Maintains discipline records
- II. Acting Principal – in absence of Principal
- III. Supervision
 - a. Supervises student movement
 - b. Assists with extra-curricular supervision as assigned by principal
 - c. Assists with the safety and well-being of students and staff:
 1. Student transportation
 2. Parking lot
 3. Fire and disaster drill
 4. Cafeteria
- IV. Athletics

Responsible for all aspects of all high school athletic programs. Has an assistant A.D. at high school to help scheduling and other duties that can be assigned during the assistant's release time during the regular work day. Coordinate facility usage with the Junior High/North School assistant A.D. who is in charge of all Junior High/North School athletic programs.
- V. Administration
 - a. Assist the Principal in overall administration of the building
 - b. Works with the school nurse for investigative follow-up actions
- VI. Attendance
 - a. Monitor student daily attendance
 - b. Maintain records of attendance
- VII. Communication – maintains active relationships with students, parents, staff, and outside agencies
- VIII. Interprets and enforces district policies, administrative regulations, and handbooks.
- IX. Leadership – exerts strong leadership by modeling behavior expected of others.
- X. Special Ed – LEA when principal can't be in attendance



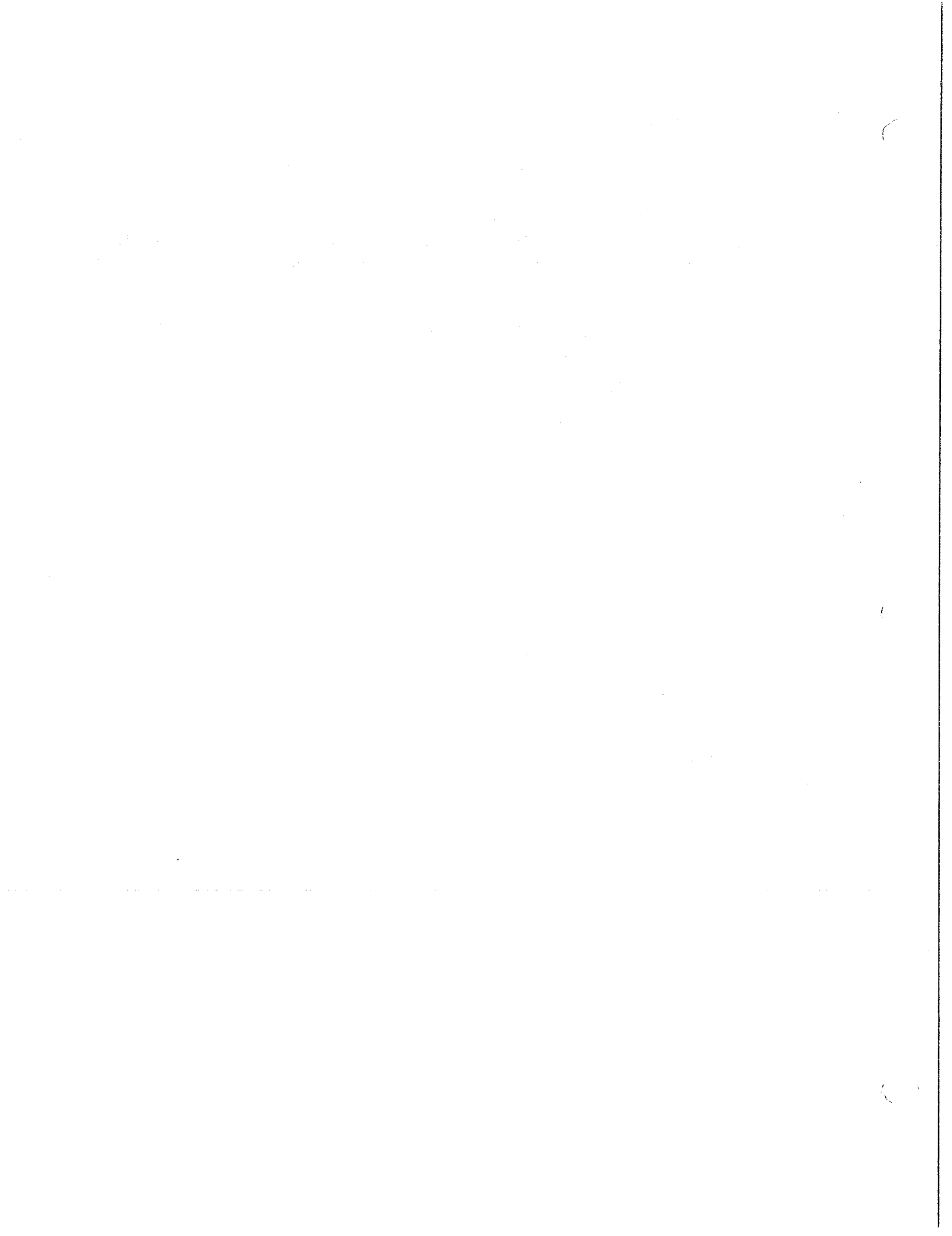
General School Administration

Succession of Authority

If the Superintendent, Building Principal, or other administrator is temporarily unavailable, the succession of authority and responsibility of the respective office shall follow a succession plan, developed by the Superintendent and submitted to the School Board.

CROSS REF.: 1:20 (District Organization, Operations, and Cooperative Agreements), 3:30
(Chain of Command)

ADOPTED: May 11, 2017



General School Administration

Administrative Procedure - Succession Plan

If the Superintendent, Building Principal, or other administrator is temporarily absent, the succession of authority and responsibility of the respective office shall be as stated below. If the first person on the succession list is unavailable, the second person shall be the responsible person and so on in order through the list. The designated individual shall communicate with the School Board President in cases of importance and/or emergency.

Superintendent

High School Principal

South School Principal

North School Principal

Asst. High School Principal

Junior High Principal

Building Principal

Superintendent

Any Other Principal

Any Other Principal

Any Other Principal

Asst. High School Principal – Second in Command at H. S.

ADOPTED: September 13, 2012

