

MATCH COURSES TO YOUR CLUSTER



HHS offers a variety of different courses that will help to set you up for a successful future towards a career of your interest! Match your career cluster to courses we offer now!

**CLICK HERE
to Expand**

KANSAS CAREERS

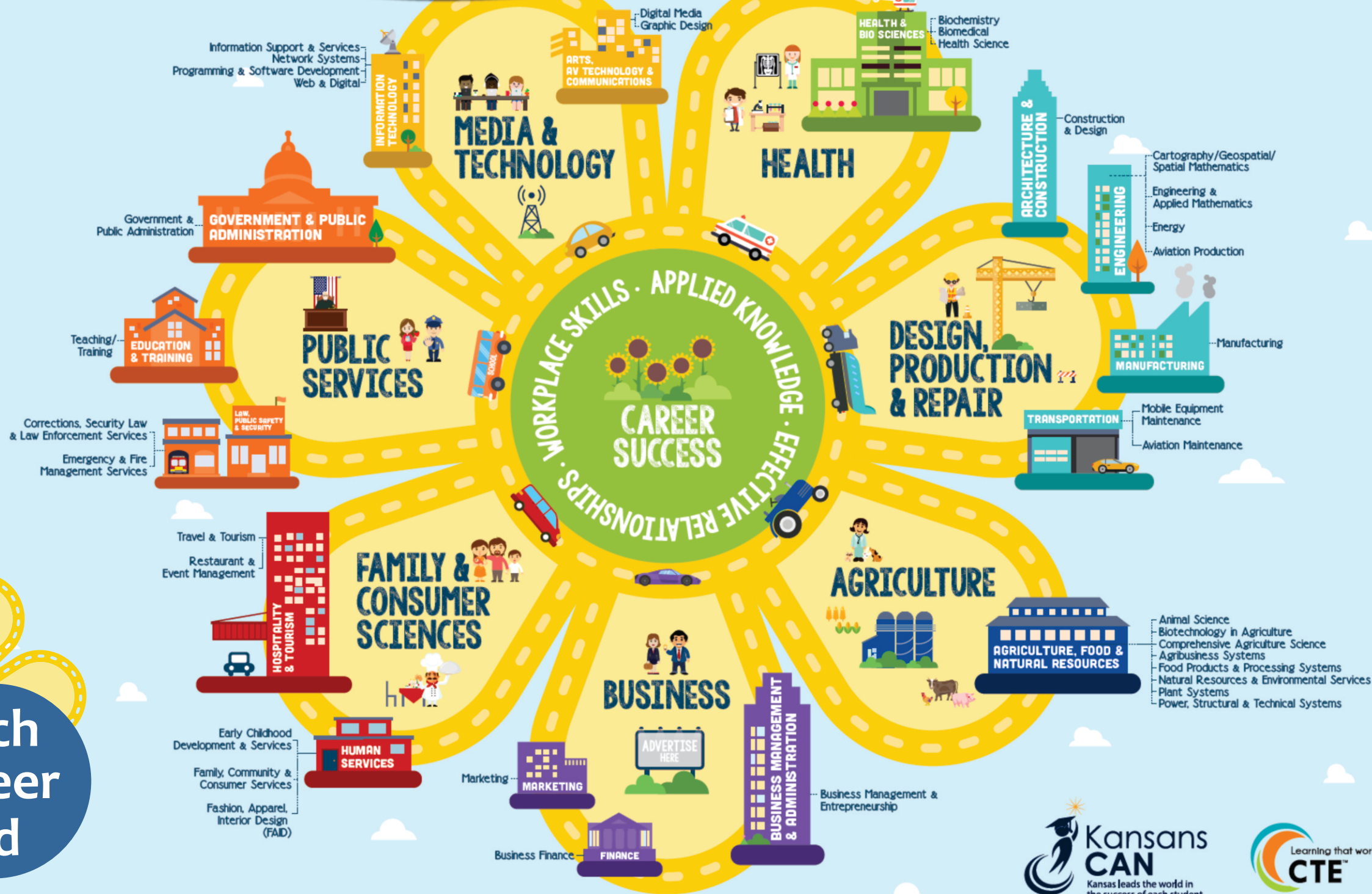
FIELDS • CLUSTERS • PATHWAYS



[CLICK HERE
to Expand](#)

KANSAS CAREERS

FIELDS • CLUSTERS • PATHWAYS

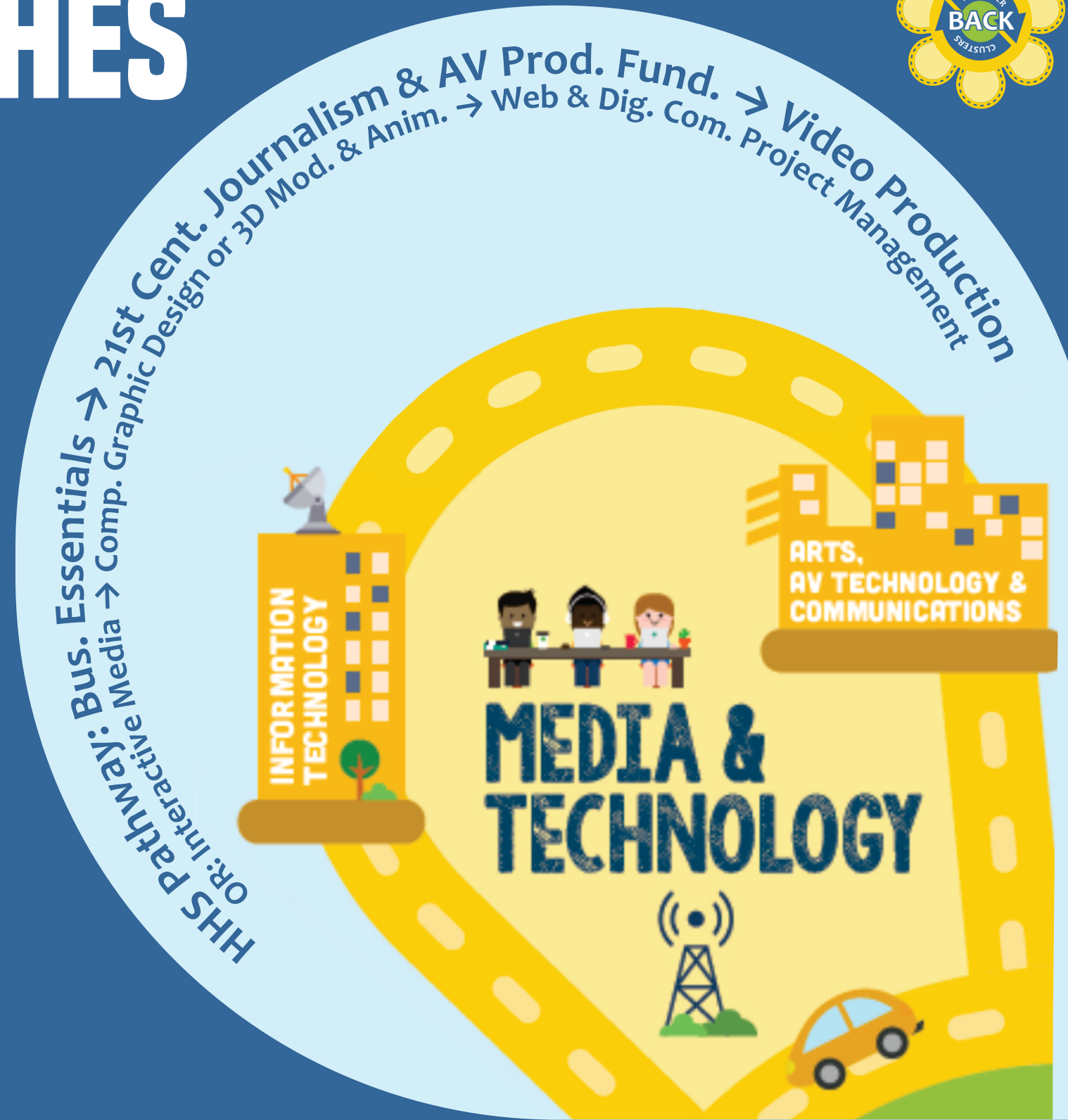


CLICK Each
Each Career
to Expand

HHS COURSE MATCHES



- Business Essentials
- 21st Century Journalism
- Audio/Visual Production Fundamentals
- Video Production
- Yearbook
- Interactive Media
- Computer Graphic Design
- 3D Modeling & Animation
- Web & Digital Com. Project Management
- 3D Modeling & Animation





HHS COURSE MATCHES



- **Human Growth & Development**
- **Nutrition & Wellness**
- **Personal Fitness**
- **Advanced Biology**
- **Introduction to Health Care**
- **Biology I**
- **Advanced Bio**
- **Anatomy & Physiology**
- **Geriatric Aide (CNA)**
- **Health Care Work Experience**
- **NCTE Co-Op: EMT, Health Science I & IV**

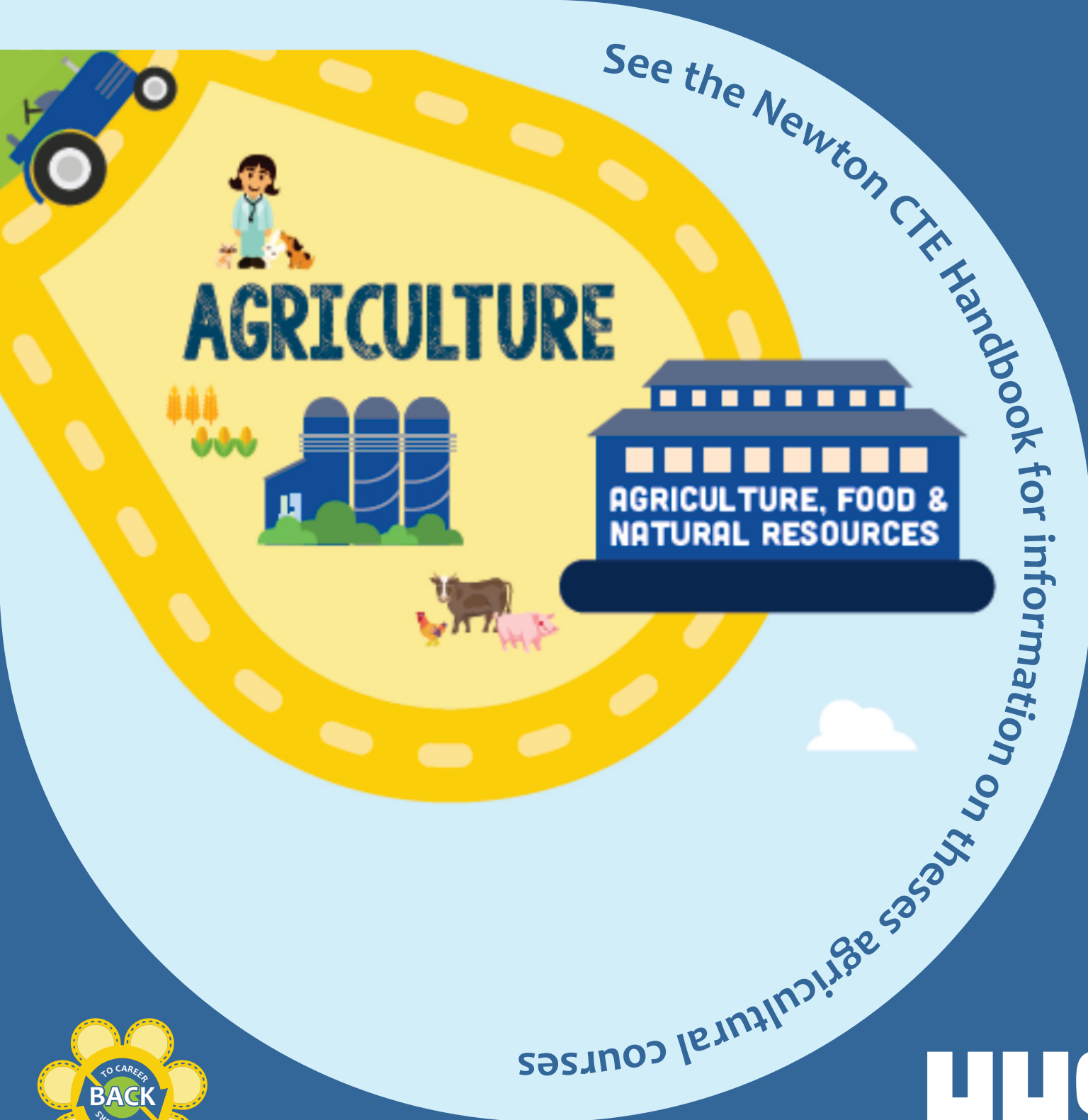


HHS COURSE MATCHES



- Robotics
- Emerging Technologies
- Intro to Industrial Technology
- Woodworking Principles
- Furniture & Cabinetry Fabrication

- Comprehensive Workplace Experience in Architecture & Construction
- Areas of Study with NCTE Co-Op: Engineering, Auto Tech, Machining, Welding & More!



AG COURSES through Newton CTE

- Tech Ag I
- Modern Ag Mechanics
- Pre-Vocational Welding
- Small Engine Repair
- Ag Power Mechanics
- Agribusiness
- Ag Equipment Construction
- Advanced Modern Ag Mechanics
- Plant & Animal Sciences
- Horticulture
- Animal Health & Vet Tech

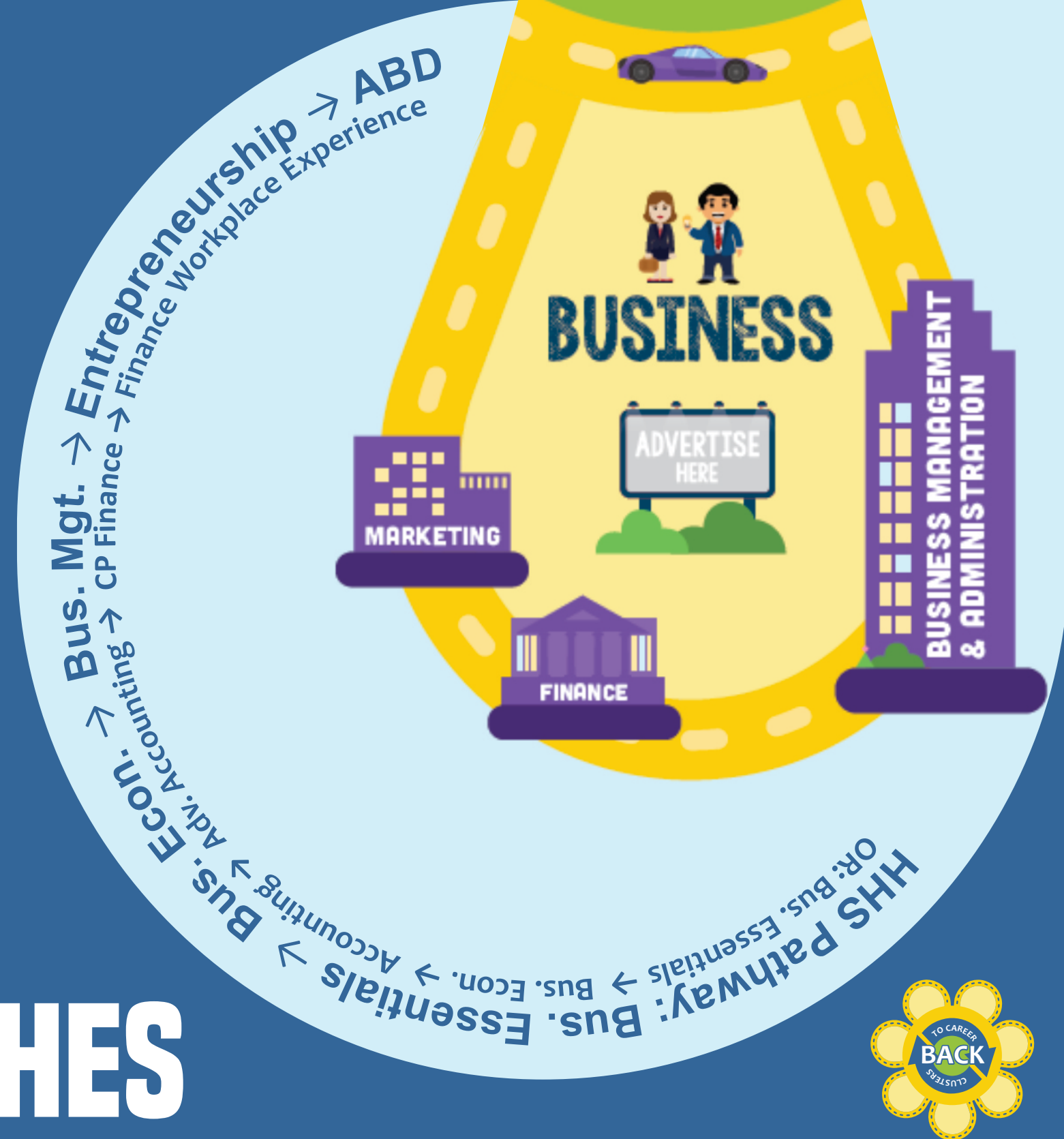


HHS COURSE MATCHES

- Business Essentials
- Business Management
- Principles of Marketing
- Entrepreneurship
- Applied Business Development

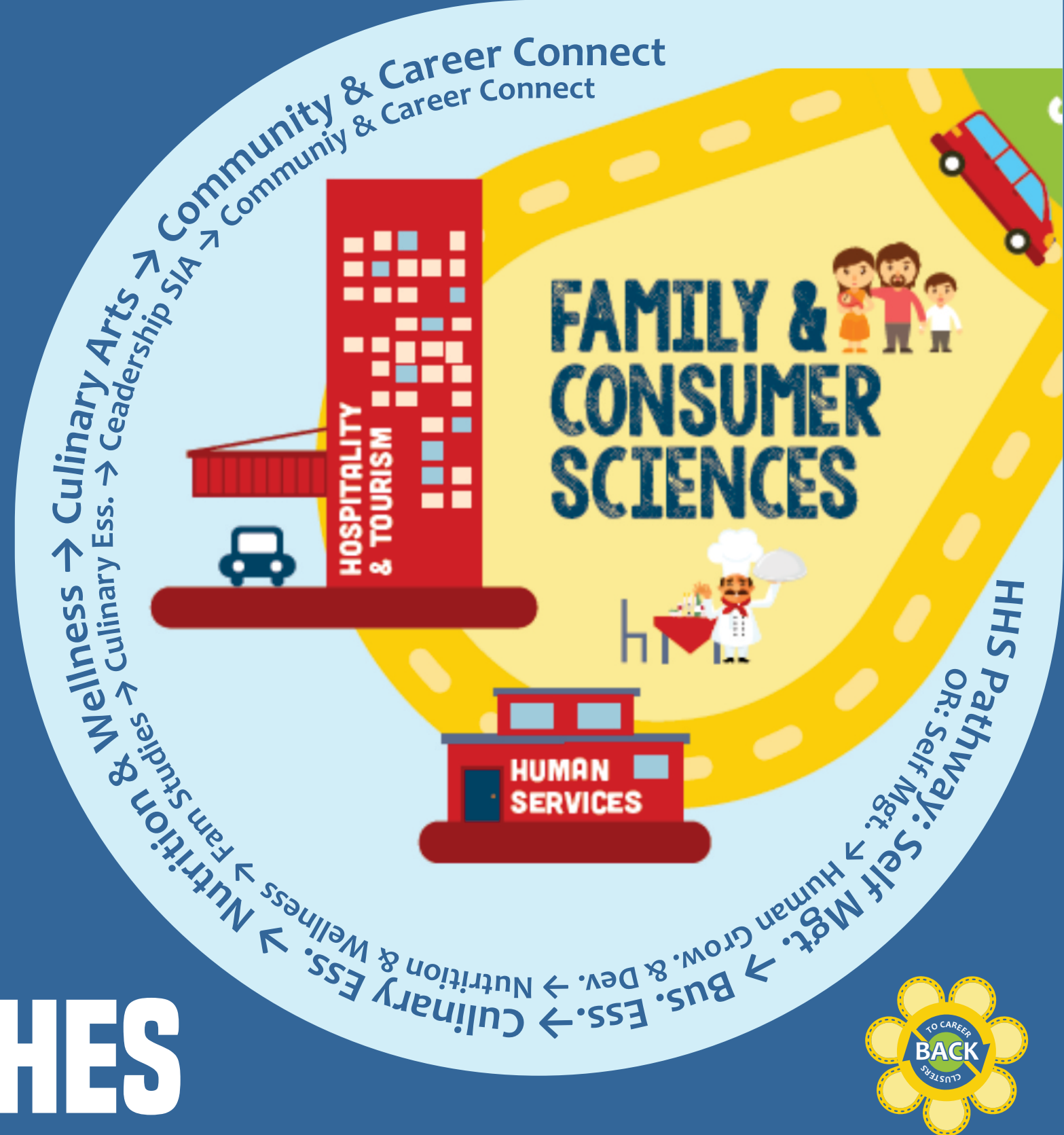
- Business Economics
- Consumer & Personal Finance
- Accounting I
- Advanced Accounting
- Finance Workplace Experience

HHS COURSE MATCHES



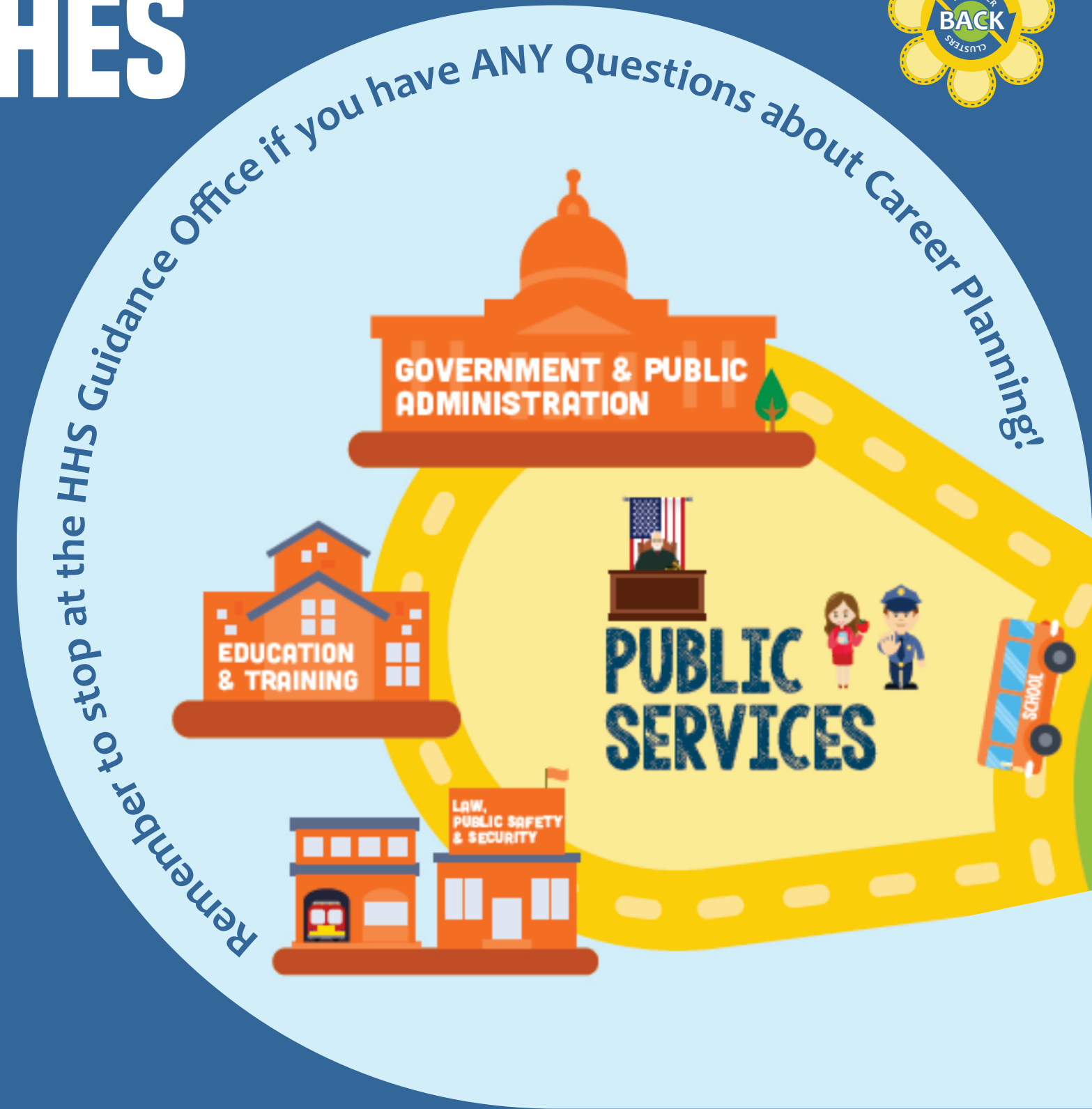
- Self Management
- Business Essentials
- Entrepreneurship
- Leadership Service in Action
- Consumer & Personal Finance
- General Psychology
- Fundamentals of Sociology
- Human Services Aide
- Culinary Essentials
- Culinary Arts
- Nutrition & Wellness
- Family Studies
- Human Growth & Development
- Career Connections
- Community Connections

HHS COURSE MATCHES



HHS COURSE MATCHES

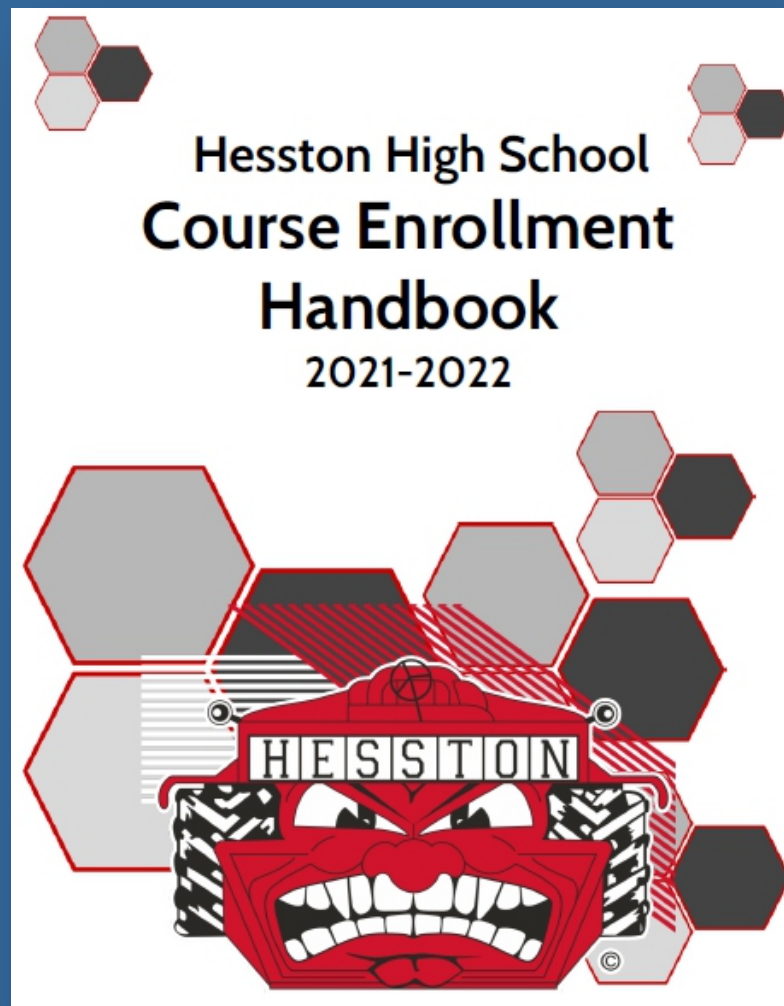
- Modern US History
- (AP) American Government
- Leadership Service in Action
- Public Speaking
- Spanish I & II
- Advanced Spanish
- General Psychology
- Fundamentals of Sociology
- Human Services Aide
- Community Connections
- NCTE Co-Op: Fire Science I & II, EMT



ONLINE DOCUMENTS TO HELP YOU CHOOSE COURSES YOU ARE INTERESTED IN:

HHS 2021-2022

Course Enrollment Handbook



HHS 2021-2022 Course Descriptions

HHS CODE	# CODE	NAME	COURSE DESCRIPTION	TERMS	CREDIT	CREDIT TYPE
Department: MATHEMATICS (You need 3.0 Math Credits for Graduation)						
MA401			Pre-Algebra courses increase students' foundational math skills and prepare them for Algebra I by covering a variety of topics, such as properties of rational numbers (number theory), ratio, proportion, estimation, exponents and radicals, the rectangular coordinate system, sets and logic, formulas, and solving first-degree equations and inequalities. This is a year long course (two terms) including both MA401/MA4012.			
MA4012	2051	Pre-Algebra	GRADE: 9, PREREQ: None.	2	1.0	Math
MA419			Consumer Math Courses reinforce general math topics (such as arithmetic using rational numbers, measurement, ratio and proportion, and basic statistics) and apply these skills to consumer problems and situations. Applications typically include budgeting, taxation, credit, banking services, insurance, buying and selling products and services, home and/or car ownership and rental, managing personal income, and investment.			
MA4192	2052	Consumer Math	GRADE: 11-12, PREREQ: Algebra I MA403/MA4032 and Geometry MA407/MA4072 or by instructor approval. This is a year long course (two terms) including MA419/MA4192.	2	1.0	Math
MA403			Algebra I courses include the study of properties and operations of the real number system; evaluating rational algebraic expressions; solving and graphing first degree equations and inequalities; translating word problems into equations; operations with and factoring of polynomials; and solving simple quadratic equations. This is a year long course (two terms) including both MA403/MA4032.			
MA4032	2052	Algebra I	GRADE: 9-12, PREREQ: None	2	1.0	Math
MA407			Geometry courses, emphasizing an abstract, formal approach to the study of geometry, typically include topics such as properties of plane and solid figures; deductive methods of reasoning and use of logic; geometry as an axiomatic system including the study of postulates, theorems, and formal proofs; concepts of congruence, similarity, parallelism, perpendicularity, and proportion; and rules of angle measurement in triangles. This is a year long course (two terms) including both MA407/MA4072.			
MA4072	2072	Geometry	GRADE: 9-12, PREREQ: Algebra I MA403/MA4032	2	1.0	Math
MA404			Algebra II course topics typically include field properties and theorems; set theory; operations with rational and irrational expressions; factoring of rational expressions; in-depth study of linear equations and inequalities; quadratic equations; solving systems of linear and quadratic equations; graphing of constant, linear, and quadratic equations; properties of higher degree equations; and operations with rational (rational) exponents. This is a year long course (two terms) including both MA404/MA4042.			
MA4042	2056	Algebra II	GRADE: 9-12, PREREQ: Algebra I MA403/MA4032.	2	1.0	Math
MA402	2036	College Algebra	College Algebra topics are intended for students who have attained Algebra I and Geometry objectives. Topics may include complex numbers; numerical tables; field properties and theorems; set theory; operations with rational and irrational expressions; factoring of rational expressions; in-depth study of linear equations and inequalities; quadratic equations; solving systems of linear and quadratic equations; graphing of constant, linear, and quadratic equations; and properties of higher degree equations. A scientific (not graphing) calculator is required for this course. This course is required in order to take other upper-level math courses like Trigonometry and Elements of Statistics (or higher ACT Math scores). GRADE: 11-12, PREREQ: Geometry MA407/MA4072 and Algebra II MA404/MA4042 (with 75%+), or ACT Math Score of 21+ CREDIT NOTE: Course may be taken for college credit through HCC. HCC QUALIFICATIONS: ACT Math 21+ or Accuplacer NextGen 263 or Cum. GPA 3.5+	1	0.5	Math
MA4062	2032	Elements of Statistics	Elements of Statistics courses focus on descriptive statistics, with an introduction of inferential statistics. Topics typically include event probability, normal probability distribution, collection and description of data, frequency tables and graphs, measures of central tendency and variability, random variables, and random sampling. Course topics may also include covariance and correlation, central limit theorem, confidence intervals, and hypothesis testing. A graphing calculator will be helpful for this course. GRADE: 11-12, PREREQ: College Algebra MA402 (with 75%+) or ACT Math score 23+, CREDIT NOTE: Course may be taken for college credit with HCC. HCC QUALIFICATIONS: ACT Math 23+ or pass college Algebra with a C or better.	1	0.5	Math
MA4022B	2036	Trigonometry	Trigonometry course topics typically include right trigonometric and circular functions, inverses, and graphs; trigonometric identities and equations and solutions of right and oblique triangles. A scientific (not graphing) calculator is required for this course. GRADE: 11-12, PREREQ: College Algebra MA402 or ACT Math Score of 23+ CREDIT NOTE: Course may be taken for college credit through HCC. HCC QUALIFICATIONS: ACT Math 23+ or pass college Algebra with a C or better.	1	0.5	Math

CONTACT US:

in the Hesston High School
Guidance Office - 620.327.7122

Courtney Hiebert
HHS Guidance Counselor
courtney.hiebert@usd460.org

Andrea Braker
HHS GO Secretary/Registrar
andrea.braker@usd460.org

Newton HS CTE Handbook

nc&te

Due to our smaller school size, we cannot offer as many elective course options across a variety of subject areas. We partner with Newton High School to help offer classes at their campus for our students to take and earn HS credits. Newton CTE courses cover areas of study such as...

Agriculture
Engineering
Health Sciences
Manufacturing
Welding
Construction
Information Technology

