

## John Milton Scott

John Scott was born near Belleville, St. Clair County, and for the first few years of his life he was a teacher and later studied law at the offices of Kinney & Bissell. Scott moved to Bloomington in 1848 after being admitted to the bar, and he quickly became involved with the city. Scott got the support of the people by being elected as commissioner of schools and city clerk in 1849, and in 1852 he served as both the county judge and city attorney. Scott later served as circuit judge in 1867 after the adaptation of the new state constitution in 1870, Scott was elevated to the Illinois Supreme Court and served until 1888.

Scott's life, however, was not always full of success. Scott had two children both of which died in their infancy, and Scott lost an election in 1856 for state senator. Despite these disappointments, Scott never allowed personal obstacles to come between him and the community he loved to serve. Scott founded the McLean County Historical Society, and he stated in this will that his fortune should be returned to the community in the form of a hospital after their last heir died.

The city of Bloomington obtained \$5.4 million from his estate in 1981, but by that time there wasn't a need to construct a fourth city hospital. Instead the city created the John M. Scott Resources Center, an institution designed to provide financial services for health care to needy McLean County residents.

The John M. Scott Center is located in the Township Center on the corner of South Gridley St. and Oakland Avenue.

## Eligibility Requirements

- Participants must have been a McLean County resident for at least one year or have been living in McLean County for at least four months with the intent to establish residency.
- Transients requiring assistance due to an accident or illness, which by its nature, precludes prompt travel.
- Participants *must* have some form of income.
- Unless qualified as stated above, college students *may not* be applicants. Living in McLean County for the sole purpose of attending school shall not be sufficient reason to establish residency or the intent to establish residency.
- Participants *must not* have insurance or be receiving assistance from the City of Bloomington Township or Public Aid.

## Financial Eligibility

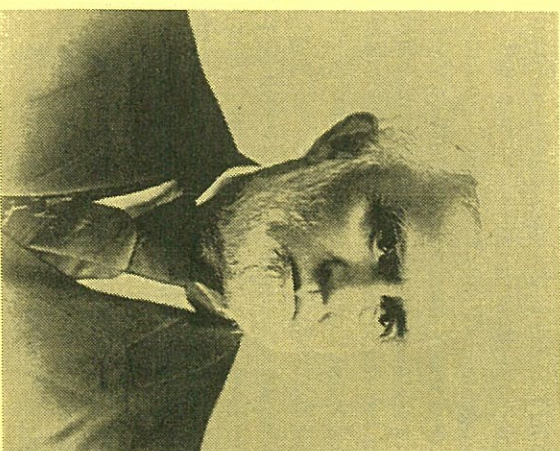
Family Size	Maximum Annual Income
1	\$21,775
2	\$29,471
3	\$37,167
4	\$44,863
5	\$52,559
6	\$60,255

- ❖ Financial Assets can be up to \$1,000 per person with a maximum of \$2,000 per household.

(Income guidelines are based upon 185% of FY 2015-2016 Federal Poverty Level Guidelines)

05/07/15

## John M. Scott Health Resources Center



*Dedicated to serving the  
health concerns of  
McLean County*

Township Center  
607 S. Gridley, Suite C  
Bloomington, IL 61701

PHONE: (309) 823-4224



## About the Center

The Center first opened its doors in March, 1984, in the City Hall Annex in an effort to help eligible indigent McLean County residents who don't qualify for other assistance programs. The Center is a *non-tax* supported entity that began with prescription medicine and meals programs. Current programs include prescription medicines, dental, transportation, patient programs, dental, transportation, and information and referral services. An appointed Scott Commission made up of representatives from local hospitals, nurses, physicians, dentists, optometrists, the Health Department, the Township, the Second Presbyterian Church, United Way, and Community Action make recommendations for programs and services for The Center. The Center runs on the interest generated from the Scott Trust Investments, a trust that generates interest made possible through the estate of Justice John M. Scott.

## Our Mission

John M. Scott Health Resources Center will provide health education, information, and referral services for financially needy individuals. The Center will accomplish this by providing direct help to clients and grants in aid to providers of medical services.

## Our Purpose

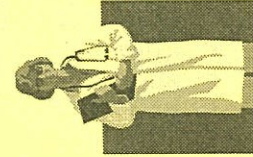
The purpose of this trust is to provide select health care services for medically indigent persons residing in McLean County. The scope of the health care services provided may include purchase of care for individuals or grants in aid for community agencies, but will not duplicate or supplant services available through other agencies or payment sources.

## Services and Programs

The Center provides a variety of services for qualified people. Please refer to the back of the brochure to see eligibility requirements.

### *Prescription Medicine Program*

This program uses a formulary approved by the Scott Commission, which covers financial assistance for prescription medicine for persons lacking insurance or other third-party payment sources. Clients are required to make a co-payment of \$5.00 per prescription.



### *Medical Office Visits*

Qualified recipients are allowed two doctor's visits per fiscal year. All visits must be pre-approved by the Center, and clients are required to make co-payments of \$4.00 to \$6.00 based on household income.

### *Indigent Patient Program*

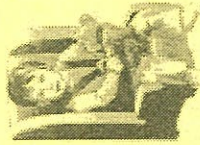
The Center can provide financial assistance for the following health services when not available through other organizations. All services must be pre-approved, and there is an annual maximum per individual/household as well as co-payment requirements of \$4.00 to \$6.00.

- ◆ Dental Health Services
- ◆ Physician Services
- ◆ Medical Equipment and supplies  
(When ordered by the physician.)
- ◆ Mental Health Medication
  - Referrals from the Center for Human Services
  - Referrals from the Community Health Care Clinic
  - Access to indigent pharmaceutical programs

*Information and Referral Services*  
Information and referrals are provided on available health care services for medically indigent persons.

### *Transportation*

This program provides safe and reliable transportation within Bloomington/Normal. For pregnant women, sick children, and cancer patients to medical appointments. This program is made possible through a donated van which is driven by a corps of volunteer drivers. The van is equipped with appropriate child restraints.



**John M. Scott Health Resources**  
**607 S. Gridley, Suite C**  
**Bloomington, IL 61701**  
**Phone: (309) 823-4224**  
**TDD: (309) 829-5115**  
**Fax: (309) 827-3667**

### **Office Hours:**

**8:00am-12:00pm**  
**1:00pm-5:00pm**

**Please call for an appointment**

<u>Provider</u>	<u>Phone #</u>	<u>Accept Medical Card?</u>
All About Eyes	663-2700	Will not accept IPA, but if you present card to them they will take 20% off exam. Also, they offer buy 1 get one free and 20% off that cost as well.
American Vision	827-8434	Exam only. Exams are only done on Tuesday, limit of 2 per week, and must be scheduled before 3pm.
Bloomington Family Eyecare	663-0303	No
Bond Eyecare	662-3937	Closed business on 12/31/14 and Gailey Eye Clinic has taken over clients
Gailey Eye Clinic	829-5311	Will accept straight medical card with no MCO assigned if they are referred by another Optometrists (OD).  If client presents with Molina, Meridian, or Health Alliance Connect as their MCO, they will not accept them on as a client.
Rieger Eye Care	807-4545	Will accept medical card for exam only.
Dr. Brtva & Associates	663-2211	Will accept straight medical card with no MCO assigned. Will only take Health Alliance Connect MCO. Exam only.
Bard Optical	454-2233	Will accept straight medical card for frames but must have had exam done at Bard. Will accept Molina, Meridian and Health Alliance for exam and frames.
Eyecare Associates	662-2277	Will accept straight medical card or Health Alliance Connect (MCO) for exam only. Will not accept Molina or Meridian
McLean County Eye Center	454-2472	Will accept straight medical card or Molina (MCO) for exam only. Will only see 2 clients a day with medical card. If they no show, they can't reschedule.
Lenscrafters	663-2020	Will accept straight medical card for exam only. Will not accept any MCO.
Sears Optical	662-4074	No
Walmart (Veteran's)	451-1500	Will accept straight medical card and MCO's for exam only.
Walmart (Market)	828-5646	Yes for exams and frames
Sam's Club	454-3138	Yes for exams only
Eye Care Associates	662-2277	Will accept straight medical card or Health Alliance Connect (MCO) for exam only. Will not accept Molina or Meridian.

Blank