

MINUTES
KELSO SCHOOL DISTRICT
MEETING OF THE BOARD OF DIRECTORS
1/25/21

The regular meeting of the Board of Directors of Kelso School District No. 458 was called to order at 6:00 p.m. at the RoyParsons Executive Board Room through a Zoom online/phone platform.

Board Members:	Leah Moore (Zoom) Karen Grafton (Zoom) Jeane Conrad - Vice President (In Person) Mike Haas - President (In Person) Ron Huntington (Zoom)
Cabinet Members:	Scott Westlund – Chief Financial Officer (Zoom) Holly Budge – Director of Human Resources (Zoom) Don Iverson – Director of Student Services (Zoom) Heather Ogden – Director of Special Programs (Zoom) Kim Yore – Director of Teaching & Learning (Zoom) Lacey DeWeert – Associate Director of Teaching & Learning (Zoom)
Superintendent:	Mary Beth Tack (In Person)
Asst. Secretary:	Molly Guler (In Person)

OTHERS PRESENT – This meeting was held remotely. Not all of the names of people in attendance were available, or partial names were listed. The names of people in attendance are listed as they were shown and included: Julie Owens-Birch , Andrew Twyman, Philip Iverson, Tim Yore, Patrick, Sam Schafer, Amy Vanderhorst, parent, Ray Byers, Sandy DeBruler, Lynette Oswald , Craig Collins, Shannon Nestaval, Kay, Shana Jabusch, Griffin

COMMUNICATIONS, CORRESPONDENCE & INTRODUCTIONS

COMMENTS & QUESTIONS –

APPROVAL OF AGENDA - Motion Passed

Motion to Approve By: Director Huntington
Seconded By: Director Moore

APPROVAL OF CONSENT AGENDA - Motion Passed

Minutes of January 11, 2021 Board Meeting

Certificated Employment Recommendations

Leave of Absence: Daphne Barnum - Teacher (Effective 3/12/21-6/30/21)

Retirements: Carlos Mendoza - Teacher (6/30/21), Pamela Mendoza - Teacher (6/30/21)

KELSO SCHOOL DISTRICT
SUPPLEMENTAL CONTRACTS ISSUED:
January 6, 2021 to January 20, 2021

Date Issued	Name	Position	School
1/13/2021	Tatum, Atticus	School Patrol	Wallace

Classified Employment Recommendations

New Hires: Jessica Melone - Paraeducator (1/11/21), Katey Kuning - Paraeducator (1/11/21)

Leave of Absence: Milagros Wells - Paraeducator (1/5/21)

Resignations: Lesha Jungwirth - Paraeducator (1/15/21)

Contracts:

SUMMARY OF CONTRACTS / AGREEMENTS WITH KELSO SCHOOL DISTRICT

Company/Provider	Sponsor	Description of Services	Amount
Arbitrage Compliance Specialists	Scott Westlund	To provide Arbitrage Compliance Services for \$7,740,000.00 Unlimited Tax General Obligation Refunding Bonds, Series 2014	Cost is \$725.00
CenturyLink	Scott Westlund	Special Construction Proposal - Lexington	Cost is \$2,574.58
Collins Architectural Group	Scott Westlund	Change Order No. 41 Butler Acres Modernization Change Highwall Indoor Units for Ductless System	\$7,620.00 Increase
GB Manchester Inc	Gary Schimmel	Low Voltage Electrical Services Agreement	Costs determined per Standard Labor & Equipment Rates at time of service
Pacific Construction Consultants	Scott Westlund	To provide construction audit services for Wallace Project	Cost proposal is \$21,428.00
Pacific Construction Consultants	Scott Westlund	To provide construction audit services for Lexington Project	Cost proposal is \$30,732.00
PBS	Scott Westlund	Consultant Services Change Order #1 - Butler Acres Modernization Site visits exceeded original proposal creating need for contract increase	\$15,500.00 Increase

ESD 112 CONTRACTS

BEST GRANT	Kim Yore	To support and retain new educators and ensure an equitable, high-quality education for every student in Washington	Total not to exceed \$25,714.29
------------	----------	---	---------------------------------

Warrants:

January, 25, 2021			
General Fund	Warrant Date	Amount	Warrant Number
AP	1/8/2021	\$2,792.98	258967-258971
ASB Fund			
AP- Reissue	1/13/2021	\$7,247.48	30842

Staff Calendar Corrections

Removed March 12 from the Make-Up dates.

Motion to Approve by: Director Conrad

Seconded by: Director Grafton

UNFINISHED BUSINESS**APPROVAL OF POLICY 2255 ALTERNATIVE LEARNING EXPERIENCE COURSES
(SECOND READING) - LACEY DEWEERT**

These changes are in language only. Most have already been in practice in the Kelso School District.

Motion to Approve by: Director Huntington

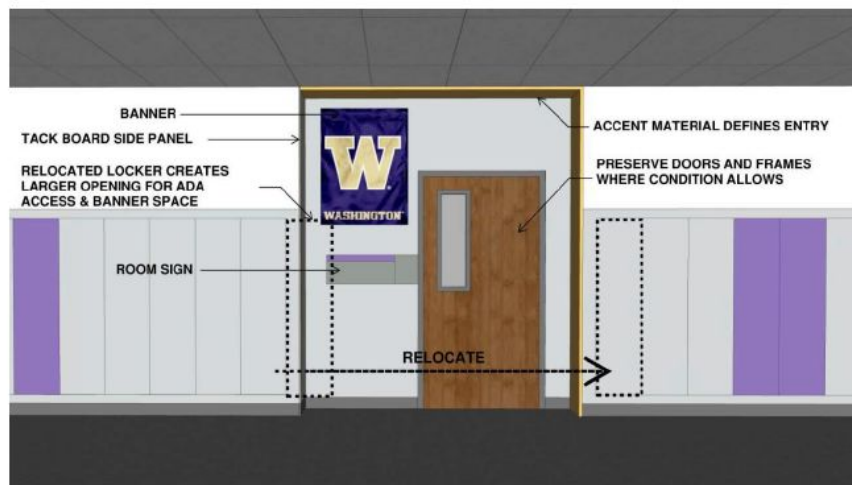
Exterior Elevations



Existing Interiors



Interior Studies - Corridors



Renovation – Admin Reconfiguration Studies



Renovation – Typical Classroom



Renovation – Classroom Daylight Study (proposed)

HUNTINGTON MIDDLE SCHOOL - AUX GYM

21938 Daylight Study

CLASSROOM 04 - SD DOCUMENTS

Notes

ADDED 1 4X6 WINDOW TO EACH CLASSROOM

Legend

Daylight Distribution



Heat Gain / Glare

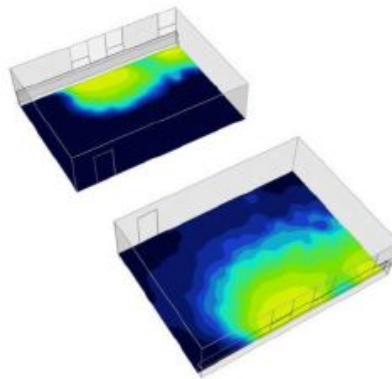


Performance

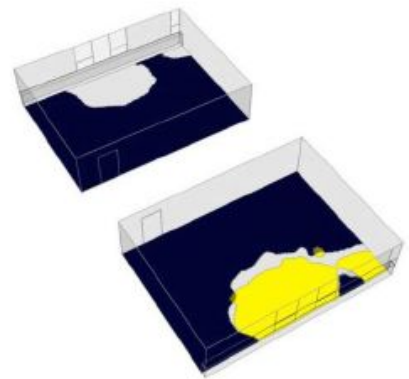
Appropriate Glazing (DF)
(average daylight factor) **1.1 %**



Daylight Distribution - 300 lux



Heat Gain / Glare



Daylight Distribution (DA)
(spatial daylight autonomy) **28 %**



Heat Gain / Glare (ASE)
(annual solar exposure) **15 %**

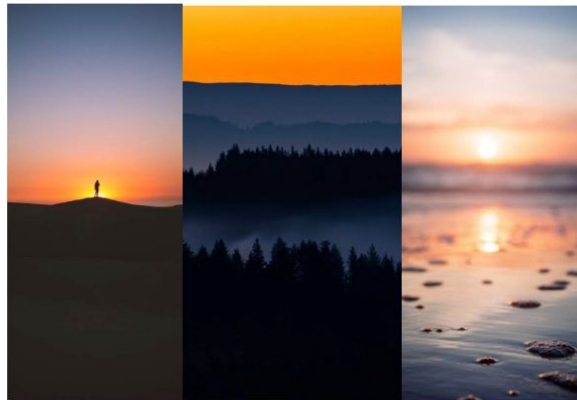


integrus
ARCHITECTURE

Interior Material Palette

SUNSET

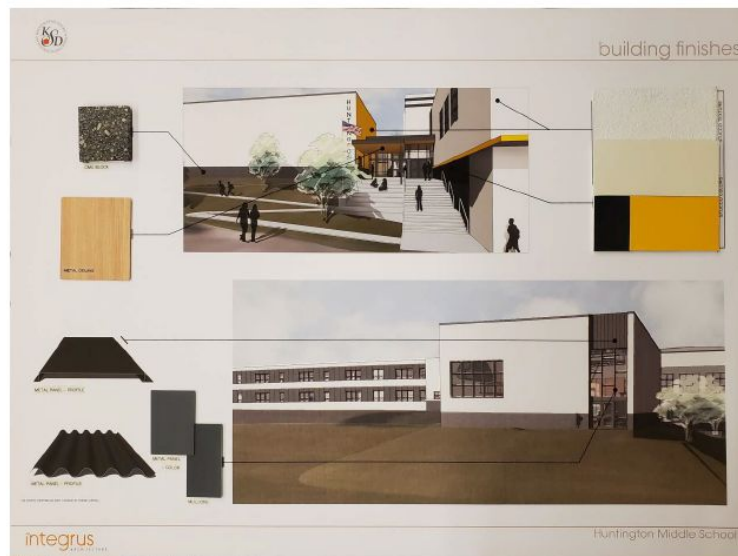
- School Pride
– Purple & Yellow
- Gradient of colors
- Cool tones



1/25/21



1/25/21



Aerial View



Drive By



Approach



New Entry



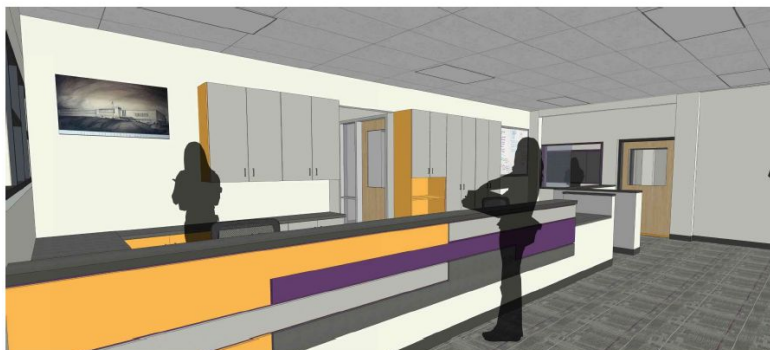
New Entry



Vestibule – Visitor Entry



Admin Visitor Entry



Admin Suite



Entry Corridor



1st Floor Corridor – Facing East



Typical Classroom Entry



Gym



1st Floor Corridor - Facing North



Cafeteria



Stage – Facing East



Music – Facing South



Library



Library



Vestibule – Auxiliary Gym Entry



Aux Gym



Aux Gym



Front Porch



View from Southeast



100% DD Cost Estimate

Design Development Refinement - Jan 19, 2021	
Main Building	
Civil	\$100,000
Arch/Structural	\$6,053,559
Design refinement Targets	(\$395,000)
Mech/Plumbing	\$4,865,344
Design refinement Targets	(\$588,264)
Electrical / Low Voltage	\$3,518,164
Design refinement Targets	(\$205,545)
Main Building	\$13,348,258
» General Conditions	\$814,244
» Design Contingency	\$1,274,625
» Contractor's O&P	\$1,157,784
» Escalation	\$381,683
Main Building	\$16,976,594
» Estimate Main Building	\$16,976,594
» Target	\$17,395,460
Difference	(\$418,866)
Total Alternates	\$451,496
» Estimate Main Building	\$16,976,594
» Estimate Add Alternates	\$451,496
» Target	\$17,395,460
Difference	\$32,630

on target

Design Development Refinement - Jan 19, 2021	
Aux Gym	
Civil	\$239,500
Soil Improvements	\$930,000
Arch/Structural	\$1,235,029
Mech/Plumbing	\$210,881
Electrical	\$440,664
Aux Gym	\$3,056,074
» General Conditions	\$187,014
» Design Contingency	\$227,016
» Contractor's O&P	\$260,258
» Escalation	\$83,933
Aux Gym	\$3,814,295
Vestibule	
Civil / Soil Improvements	included w/ gym
Arch/Structural	\$243,049
Mech/Plumbing/Electrical	included w/ gym
Vestibule	\$243,049
» General Conditions	\$14,873
» Design Contingency	\$18,055
» Contractor's O&P	\$20,698
» Escalation	\$6,675
Vestibule	\$303,350
» Estimate Aux Gym & Vestibule	\$4,117,645
Soil Improvement refinement	(\$50,000)
» Target	\$4,062,500
Difference	\$5,145

on target

Jeane Conrad: ADA Accommodations for those gaining access to the entrance?

Patrick Donnelly: Yes, the ramp from the parking lot has been updated so that it is the correct pitch.

APPROVAL OF RESOLUTION 2020/21 - 05 HUNTINGTON MIDDLE SCHOOL MODERNIZATION - SCOTT WESTLUND

**KELSO SCHOOL DISTRICT NO. 458
RESOLUTION NO. 2020/21—05**

**A Resolution of the Board of Directors certifying
the approval and use of the Huntington Middle School Modernization
Design Development Documents**

WHEREAS, Kelso School District No. 458 has contracted with Integrus Architecture to develop the Design Development documents, with assistance from the Huntington Middle School Design Advisory Committee, to be used as the basis for construction documents for the Huntington Middle School modernization project.

THEREFORE, BE IT RESOLVED, that Kelso School District Board of Directors approve use of the Design Development Documents for the Huntington Middle School Modernization Projects

DATED this 25th day of January, 2021.

Motion to Approve by: Director Moore

Seconded by: Director Huntington

**BEACON HILL ELEMENTARY UPDATE - TIM YORE, JULIE OWENS-BIRCH & LYNETTE
OSWALD**

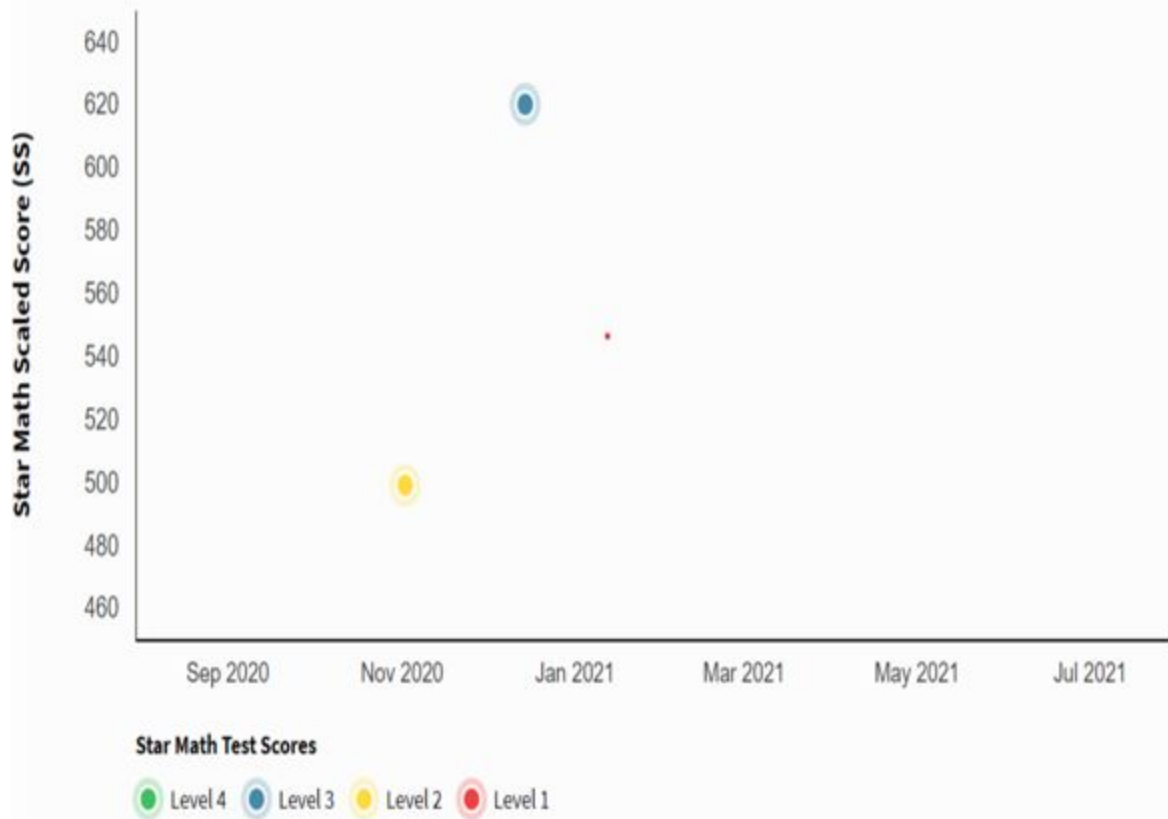
**Beacon Hill
Elementary**

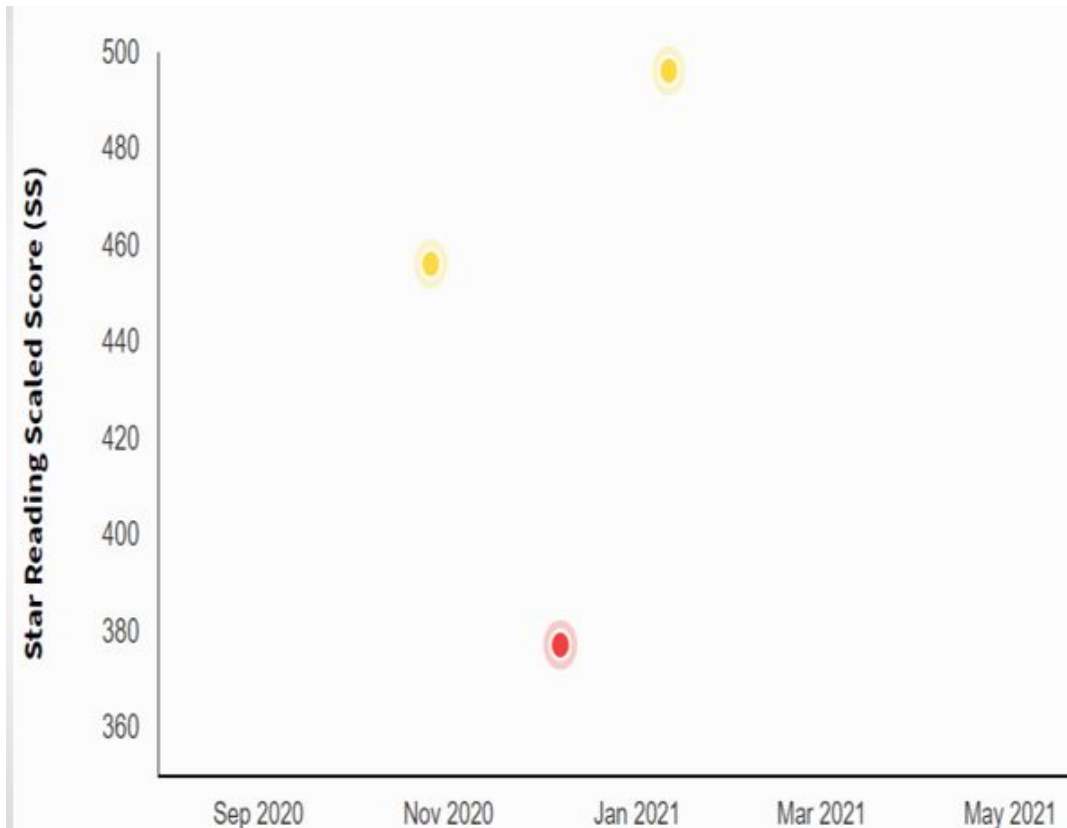


We're All In!

Big Rocks:

- **Relationships:** Mastering the art of establishing and fostering relationships with students, families and colleagues.
- **Fidelity to Curriculum:** Last 2 years ReadyGen, New Math curriculum on the horizon, Edgenuity-Whatever it is, let's commit and do it well.
- **Fluency with Platforms:** What if this is the new normal? We are not getting by...we're thriving.
- **Student Engagement:** What strategies do we incorporate that lead towards students making the effort to engage and ATTEND.



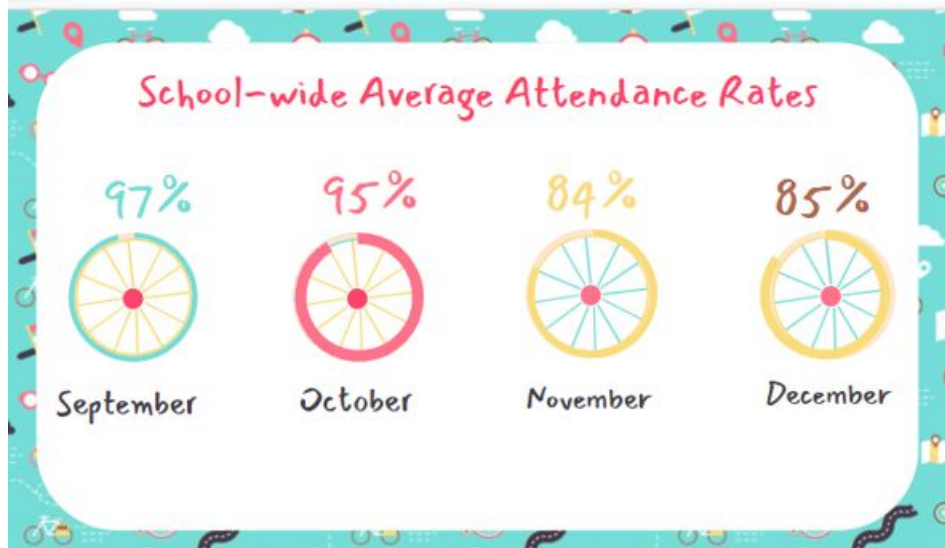


Engagement/Attendance

- Re-engagement team identifies family needs, staff concerns, & student access
- Internet Cafe - provides equitable access to Internet
- Attendance - Monitor weekly school-wide and district data
- Phone calls - Connect with families, weekly, to discuss and find ways to engage students in online & in-person learning
- Continuous communication with KVA - KVA staff and families
- Home visits & individual family conferences
- OWLS team - supports staff, students, and families



WHY?



School-wide Hybrid Attendance Incentive

- January 1: Families Notified and Community Support in effect
- January 4: Introduced to staff and attendance tracking begins
- January 11: Parade of golden tickets and possible bike
- June: Raffle ends and bikes/gear distributed

How can I prepare?

01
Wake up and get ready

- Get enough sleep
- Eat a good breakfast
- Have your chromebook charged

02
Be on Time

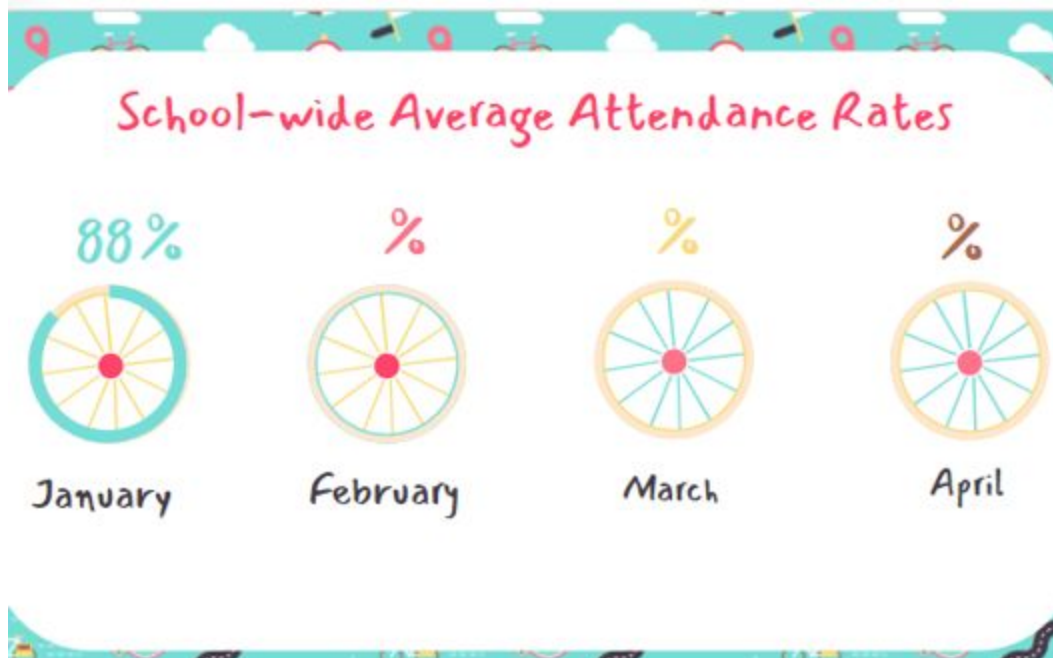
- Get in the car or on the bus
- OR be prepared with your computer at 8:45 at home

03
Celebrate

- Be proud of your work
- Thank those who have helped
- Remember that every week there is another opportunity.



Attendance Incentive First Week Results...INCREASE



Social Emotional Learning: Tier 1

Bobcat Beliefs

Respectful Bobcats <i>When you are respectful you make teaching and learning easier for yourself and others.</i>	Responsible Bobcats <i>When you are responsible you take charge of your emotions, thinking, behavior, and learning for the success of yourself and others.</i>	Safe Bobcats <i>When you are safe you are mindful of how your words, body, and behaviors affect yourself and others.</i>	Kind Bobcats <i>When you are kind you care about the success and feelings of yourself and others.</i>
<ul style="list-style-type: none"> • Actively listen <ul style="list-style-type: none"> ◦ Voice level ◦ SLANT ◦ Whole body listening • Treat others the way they want to be treated <ul style="list-style-type: none"> ◦ Being considerate ◦ Self-reflection ◦ Empathy ◦ Give space • Follow adult directions <ul style="list-style-type: none"> ◦ First timer 	<ul style="list-style-type: none"> • Self-manage <ul style="list-style-type: none"> ◦ Honest ◦ Goal setting ◦ Self-regulate (self-monitor/impulse control) ◦ First timer • Participate <ul style="list-style-type: none"> ◦ Come prepared ◦ Ask and answer questions ◦ Engaged • Solve problems <ul style="list-style-type: none"> ◦ Big vs. Small ◦ Big problems need adult help ◦ Small problems solved with "I" messages, ignoring, walking away, wait and cool off ◦ Persevere 	<ul style="list-style-type: none"> • Keep hands, feet and objects to self <ul style="list-style-type: none"> ◦ Personal space ◦ Body to self (hands and feet) ◦ Objects to self ◦ 6 ft apart • Use school equipment appropriately <ul style="list-style-type: none"> ◦ Use item for specific purpose ◦ Share/take turns ◦ Care for equipment • Show mindful actions <ul style="list-style-type: none"> ◦ Awareness of environment/others/self both with words and actions ◦ Impulse control (think before you act) ◦ Keep masks on face ◦ Shields ◦ Wash/sanitize often 	<ul style="list-style-type: none"> • Show empathy <ul style="list-style-type: none"> ◦ Include others ◦ Patience ◦ Perceive and understand what others are feeling ◦ Understanding and sharing what others are going through • Help & support <ul style="list-style-type: none"> ◦ Complimenting and encouraging ◦ Sharing ◦ Upstander ◦ Including others • Use school language <ul style="list-style-type: none"> ◦ Manners ◦ Politeness ◦ Self-talk ◦ Encouraging words

Beacon Hill Bobcats
BRAVE Beliefs-3 W's

B.R.A.V.E	Boldly Respectful	Really Responsible	Always Safe	Very Kind
Masks Wear your masks.	<ul style="list-style-type: none"> ★ Bring your mask everyday ★ Keep your own mask on your own face, except when eating or drinking ★ Keep your hands away from your mask ★ Wear mask appropriately (over nose and mouth) ★ Keep track of your own mask ★ Kind reminders about mask slips 			
Distance Watch your distance.	<ul style="list-style-type: none"> ★ Stay at least 6 feet from others ★ Greet each other using: air hugs, air high 5's, smiling eyes, friendly waves, spirit fingers ★ Hands, feet, and objects to self at all times ★ Ask politely if space is needed 			
Hygiene Wash your hands frequently.	<ul style="list-style-type: none"> ★ Wash hands before eating ★ Wash hands after using the bathroom ★ Use hand sanitizer when entering the building or wash hands in classroom ★ Use hand sanitizer when you cannot wash your hands 			



Chromebook Etiquette

Respectful	Safe	Responsible	Kind
<ul style="list-style-type: none"> • Stay engaged in school work • Stay on school appropriate websites • Notify teacher or parent if you are unsure if a website or link is safe • Get Chromebook and materials ready 5 minutes before class meetings and small groups • Keep Chromebook free of accessories and stickers 	<ul style="list-style-type: none"> • Carry with two hands • Keep away from food and beverages • Store in safe, dry, room temperature place • Practice internet safety, always 	<ul style="list-style-type: none"> • You are responsible for your Chromebook • Keep on an even, sturdy surface • Wipe down with a damp cloth regularly • Gently plug and unplug cords • Charge at night so you are ready to learn in the morning 	<ul style="list-style-type: none"> • Be a good digital citizen • Encourage and speak kindly to yourself and others online

Safety

- School Safety Team
(Admin, PSE1 member, KEA member, Custodial)
- Weekly to Bi-weekly safety team meetings
- Review District updates for safety and cleaning
- Team adds to agenda
- Team shares out notes
- Adjustments made when needed
- Open communication

Excellence in Kelso- Getting to 100% Through the 3 C's

- Compassion
- Communication
- Common Sense



STUDENTS*STAFF*COMMUNITY

***A teacher's most powerful ally is his or her own example.**

Karen Grafton: Have you found the root cause for the decline in attendance?

Julie Owens-Birch : Kids had opportunities to log on multiple times during the day. When changed to hybrid model attendance improved. Communication is a constant in getting attendance up.

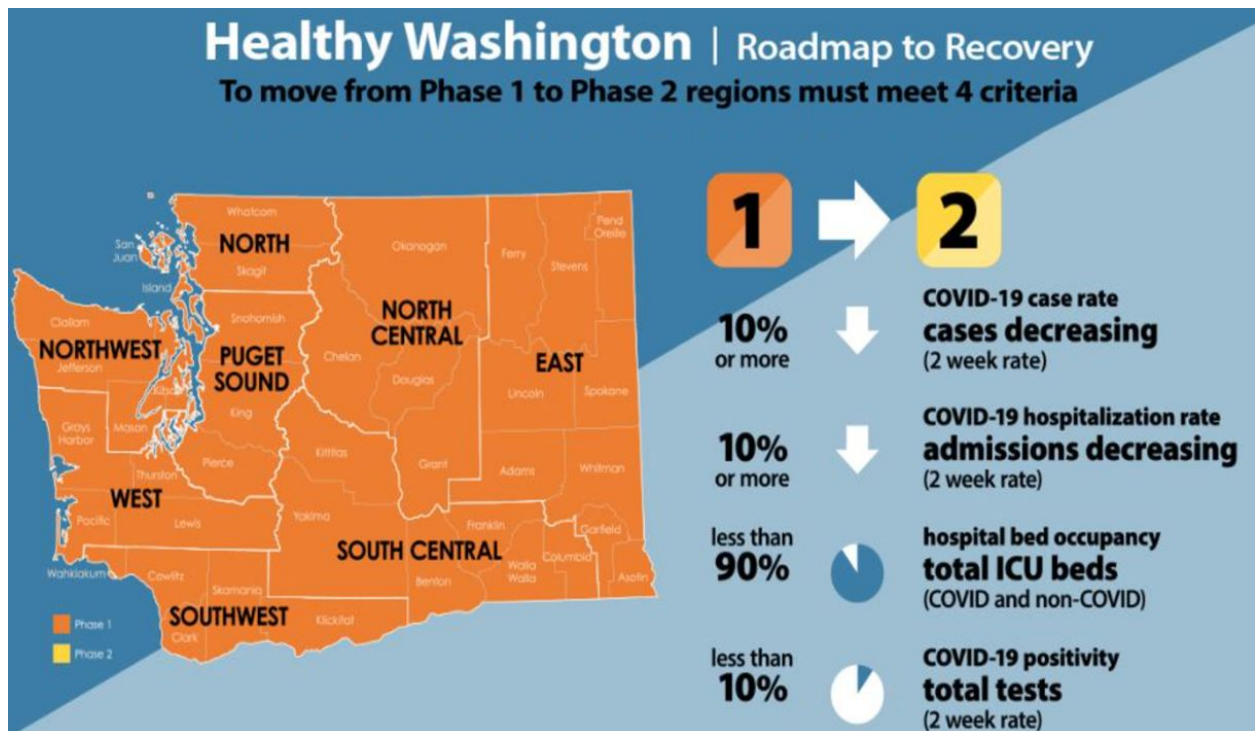
Ron Huntington: Good job on presentation.

Mary Beth Tack : Thank you for all the heavy work you are championing while transitioning kids into in person learning as well as your help getting Lexington Elementary up and running.

HEARD SCHOOL REOPENING UPDATE - DON IVERSON

Agenda

- ❖ Current Cowlitz County Data
- ❖ KSD Weekly Status Report
- ❖ Vaccination Update
- ❖ Application for "Learn to Return - COVID Testing Sites"



WASHINGTON STATE—CURRENT ESTIMATES

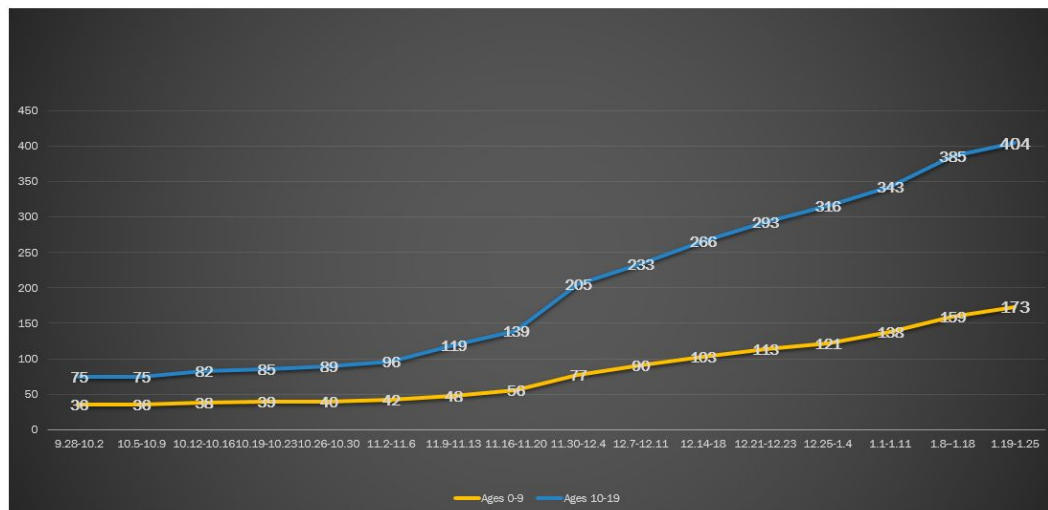
INSTITUTE FOR HEALTH METRICS EVALUATION



COWLITZ COUNTY DATA— RELEASED TODAY

Indicator	Most recent time frame with complete data	Current status	Trend over time
Cases in Cowlitz County	1/6 - 1/19	503 cases per 100,000 population in past 14 days	Sharp increase since late October, steady from Thanksgiving to Christmas, current case rate is higher than pre-holiday levels
Percent of Cowlitz County tests that are positive (see updates on first page for more details)	12/23 – 1/5	18.8%	Sharp increase from late October to mid-November, current figure may be higher than mid-November, recent time trend is uncertain
Cowlitz County residents admitted to the hospital with COVID-19*	12/13 – 12/26	24 COVID-19 hospital admissions	Sharp increase since late October, may have leveled off since early November
ICU occupancy in Southwest Washington**	1/10 – 1/16	BELOW THRESHOLD 54% of ICU beds occupied	Decrease from last week

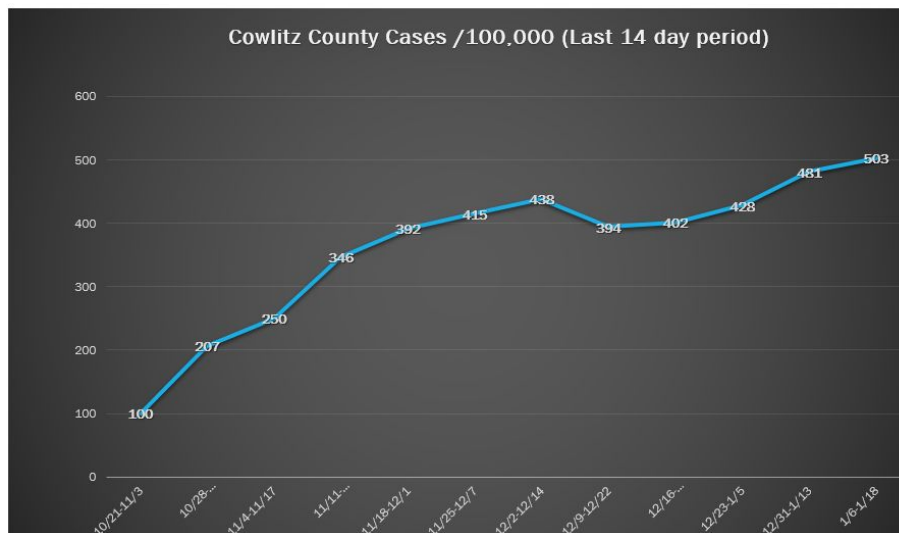
CONFIRMED COVID-19 POSITIVE CASES IN COWLITZ COUNTY BY AGE GROUP



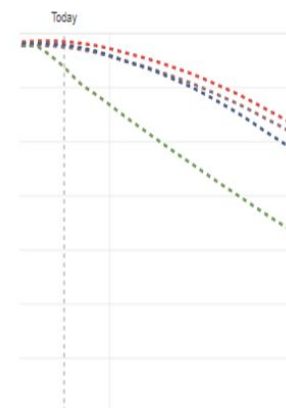
This data shows the current numbers of COVID positive students of school aged kids in our county---not in our schools. The data is pretty static thru 10.26---after that we see a steady climb in our 10-19 year olds with a high clip starting 2 weeks after Halloween. The 0-9 age group has been static for some time---increasing during the same time period as the 10-19 year

olds---but not at same rate of exposure. This supports the national and state data that indicates that younger children appear to be less susceptible to infection, and when infected, less lead to onward transmission than older children and adults.

COWLITZ COUNTY CASES PER 100,000--LAST 14 DAYS



Institute for Health Metrics



This data shows the number of Cowlitz County cases/100,000---since 10.14. The graph is intended to show that in Cowlitz County we have seen an uptick in cases. The graph to the right shows the anticipated state-wide curve....the data supports that we should be at the top of the curve, and beginning our descent.



KSD WEEKLY STATUS UPDATE

REV: 1-20-21

OUR 4 KEY METRICS

WEEK OF JAN 19

STATUS JAN 19-22

K-5: Hybrid

6-12: Remote

In-Person
Small Groups
Internet Cafe
Special Education

KVA: Remote

DOH recommends that local leaders consider COVID-19 activity level (i.e., case rates, percent test positivity, trends, etc.) as well as the educational, social and emotional benefits of in-person learning for students.

Across all COVID-19 Activity Levels, when trends in cases and hospitalizations are flat or decreasing, and the school can demonstrate the ability to limit transmission in the school environment, expand access to in-person learning.

DOH Tools to Prepare for In-Person Learning (rev. 12-16-20)

1. TRANSMISSION IN SCHOOLS

For historical data, visit the KSD COVID-19 Dashboard at bit.ly/ksd-c19.



- 0 school-based student-to-student transmission
- 0 classrooms closed due to COVID-19
- 0 schools closed due to COVID-19



2. COVID-19 ACTIVITY

Historical Data

DATE	CASES / 100K	LEVEL
NOV 9-JAN 19	100-481	HIGH
OCT 12-NOV 02	44-64	MODERATE
SEPT 28-OCT 5	79-81	HIGH
SEPT 8-21	36-38	MODERATE
AUG 31	24	LOW
AUG 10-24	29-62	MODERATE



481 cases per 100k
per JAN 19 report
from CCHHS



3. POSITIVITY RATE

Percent of County tests that are positive
Goal <10%



18.1%

DEC 16-29
per CCHHS



4. HOSPITAL CAPACITY

Not provided in this week's CCHHS report. However, the report states COVID-19 hospital admissions may have leveled off since early November and regional ICU occupancy is BELOW THRESHOLD.

ADEQUATE

as of JAN 6
per 1/11 CCHHS report



Cowlitz County School Metrics Reports at: bit.ly/cc-metrics | Daily Data: bit.ly/daily-cc

We can no longer use the positivity rate in our discussions---the data is outdated and has not been updated in nearly month. DoH has agreed and understands the issues---this is a DoH system issues that they are working thru. With that, we are currently hitting 2 out of the 3 metrics.....so then we go to the DoH metrics (next slide) to see how our county infrastructure rates are holding.... All of these metrics are used to determine if we can safely return students to school.

DEPARTMENT OF HEALTH REOPENING METRICS

[HTTPS://WWW.CO.COWLITZ.WA.US
/DOCUMENTCENTER/VIEW/21942
/20210119-COWLITZ-COUNTY-
COVID-19-SCHOOL-DATA](https://www.co.cowlitz.wa.us/documentcenter/view/21942/20210119-COWLITZ-COUNTY-COVID-19-SCHOOL-DATA)

For whom should our community provide in person learning?

We are currently at a **HIGH** level of COVID-19 activity, and have been at this level for nine (9) weekly Monday reports. At this level, the Department of Health recommends phasing in in-person learning in groups of 15 or fewer students for pre-K through grade 5 and for those with highest needs. More information can be found on page 8 of DOH's [Tools](#) document. Specific indicators related to this question are provided on the next page.

1. **Is there adequate access to testing in the community health system for ill students and staff?**
YES Students and staff can access COVID-19 testing through their healthcare provider or the [free drive-thru COVID-10 testing clinic](#) at the Cowlitz County Fairgrounds.
2. **Is there adequate capacity in our local health department to investigate confirmed COVID-19 cases, quarantine their close contacts, and assess whether transmission is occurring in the school?**
YES CCHHS supports schools in case of an outbreak, including case and outbreak investigation and contact tracing.
3. **Can local public health monitor the level of community spread to determine when a change in education modality is needed?**
YES We publish this report weekly to provide relevant data to school districts and the community

KELSO SCHOOL DISTRICT TRANSMISSION CASES (STUDENTS)

Can the Kelso School Districts demonstrate the ability to limit transmission in the school environment?




4. **YES**

Cases Originating In School	Student to Staff Exposure
Confirmed cases of transmission with a clear and direct link to a school building as determined by Dept of Health and KSD Contact Tracers.	Confirmed cases of transmission with a clear and direct link from a student to a staff member as determined by Dept of Health and KSD Contact Tracers.
1	0

In the nearly 80 days of in person learning, thousands upon thousands of kids have walked into our doors during this time period----we have had only one student to student transmission. ZERO student to staff transmissions. This is a tremendous credit to our health and safety planning and our ability as a staff to adhere and stay true to (1) Mask wearing, (2) maintaining 6-8" of social distancing and (3) washing our hands!

TIMELINE

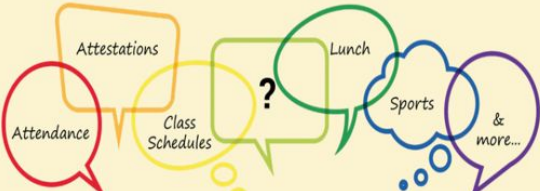
- January 11th Grades K-5, 2 days a week in person.
- January 25th Seniors/Juniors, 2 days a week in person
- February 2nd Grades 6-8, 2 days a week in person
- February 8th Freshman/Sophomores, 2 days a week in person



KSD TOWN HALL


**JUNIORS & SENIORS
RETURN TO IN-PERSON LEARNING**

THURSDAY, JAN 21 • 6:00 PM
JOIN VIA ZOOM: bit.ly/jr-sr-return



Additional health and safety plans


- Attestations for daily health checks
- Multiple entry points for students based on last names
- Grab and Go breakfast program
- Eliminated students congregating in hallways before school, during passing times and after school.
- Lunches—students seated in cafeteria 8' apart.



KSD TOWN HALL

**MIDDLE SCHOOL
RETURN TO IN-PERSON LEARNING**


WEDNESDAY, JAN 27 • 6:00 PM
JOIN VIA ZOOM: bit.ly/ms-return



Huntington Middle School



Coweeman Middle School

 **Cowlitz County**
Washington

Updated 1/20/2021

COVID-19 Vaccine Phases

We're currently in...

Phase 1A: A1 & A2 & Phase 1B: B1

A1	• High-risk health-care workers in health care settings	• Long-term care facility residents	✓
A2	• High-risk first responders	• All other workers at risk in health care settings	
B1	• All people <u>65</u> years or older	households (home where two or more generations reside such as an elder and a grandchild)	✓
	• All people <u>50</u> years or older in multigenerational		

Each group will become eligible for the vaccine one at a time and will continue to be eligible throughout the vaccine distribution.

B2	<ul style="list-style-type: none"> High-risk critical workers <u>50 years or older</u> who work in certain congregate settings: agriculture; food processing; grocery stores; K-12 (educators & staff); childcare; corrections; prisons, jails or detention centers; public transit; fire; law enforcement 	X
B3	<ul style="list-style-type: none"> People <u>16 years or older</u> with 2 or more co-morbidities or underlying conditions 	X
B4	<ul style="list-style-type: none"> High-risk critical workers <u>under 50 years</u> who work in certain congregate settings (as noted in B2) People, staff and volunteers in congregate living settings: correctional facilities; group homes for people with disabilities; people experiencing homelessness that live in or access services in congregate settings 	X

Information on who is eligible for Phases 2, 3 and 4 is coming soon.



www.findyourphasewa.gov

PROGRESS...

- Cowlitz, Clark and Skamania counties are continuing to plan for community vaccination sites across the Southwest Washington region.

With support from the state, the three-county region submitted a request for a Type 1 incident management team to help plan and manage the operation of community vaccination sites. FEMA approved the request to deploy one of 16 national Type 1 incident management teams to Southwest Washington.

Details about the vaccination sites, including locations and opening dates, are not yet available. Updates will be provided in the coming days.

LEARN TO RETURN---PILOT PROGRAM

- We have applied for a pilot grant to provide voluntary student and staff COVID-19 testing. We would use this strategy as an additional tool in our overall efforts to keep staff and students safe.
- For students and staff in Kelso, weekly testing could occur at all school sites. The results will help us to isolate positive cases quickly and quarantine close contacts to prevent disease spread among the school population and beyond.
- This strategy gives KSD and public health officials more data to consider when deciding when and how more students and staff can resume in-person learning. We will use this data to help keep students and staff safe.

■ Staff/students must ensure and model mask wearing at all times in our schools.

- ☐ Anytime we are indoors and working with others, a mask must be worn.
- ☐ Staff must wear the appropriate level of PPE for their work level.

■ Staff/students must ensure social distancing at all times.

- ☐ A close contact is defined as any person that was within 6' of an contagious person, for *cumulative* time of 15 minutes within a 24 hour period.

■ Staff/students must wash their hands frequently.

■ Staff/students must stay home if they are sick.

Ron Huntington: If students stay home because they have a cold, they can still maintain attendance through hybrid learning right? By logging on from home.

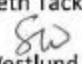
Don Iverson: Correct

Ron Huntington: How do you deal with allergy symptoms?

Don Iverson: We haven't had to deal with this much. Parents and staff know if it is an allergy and we are trusting them to make that call.

BUDGET REVIEW - DECEMBER - SCOTT WESTLUND

January 20, 2021

TO: Mary Beth Tack, Superintendent
FROM:  Scott Westlund, Chief Financial and Operations Officer
SUBJECT: Budget Status Reports for December 31, 2020.

Overall average annual District enrollment (including Running Start) for the 2020/21 school year was budgeted at 4961 FTE. As of January 4, 2021, enrollment was 4781 FTE, or down 180 FTE. This remains in line with our projection of a 200 FTE loss this school year due to COVID-19.

Prior Board action has identified costs reductions and savings to bridge a financial shortfall of over \$4M to basic education and programming, including the transportation and nutritional services operational areas. Additional federal assistance will be needed to provide extra support in order for us to adequately address our financial challenge.

Great news came at the end of December, with Congress passing the second COVID relief funding for schools, *The Elementary and Secondary School Relief (ESSER II) Act*. In addition to the \$1.1M provided in the first release (ESSER I), we are projected to receive approximately \$4.3M to aid our school district in reopening our schools, covering losses in enrollment, special education, transportation, and nutrition services, as well as developing a plan to address learning loss. As of this memo, there is the possibility that additional federal funds will be provided in a new Biden economic plan to be released soon after his inauguration.

It remains estimated that our ending fund balance in August 2021 will be \$5,000,000, or 6.9% of projected expenditures and transfers for 2020/21.

LEGISLATIVE UPDATE - DECEMBER - LEAH MOORE

- 4 pages of bills that have to do with education
- 3 that have to do with us
 - How to deal with funding in areas of depletion due to COVID
 - Adjustments to graduation requirements will most likely happen
 - Some vaccination info
 - Possible state dinosaur on the horizon

SUPERINTENDENT REPORT

- High School
 - 215 Juniors and Seniors reported (over 75%)
 - Incredible and emotional environment with music greeted the students this morning.

- College in the High School to receive dual credit will be extended to statistics
- Awarded the 2020 AP Computer Science Female Diversity award
 - Wendy Droke, Brenda Sargent, Deb Gribskov
- 5 year 21st Century grant received to continue our partnership with Youth and Family Link
- Received flowers from Mary Anne Gennette, wife of Tom Gannette who served on the board previously. She sent these to the board to show her appreciation for all they do.

FOR THE GOOD OF THE ORDER

Adjourn meeting 7:11 pm

X

President

X

Secretary