

# TRI-VALLEY HIGH SCHOOL OPEN HOUSE

SUNDAY, OCTOBER 12, 1980

CHESTER  
SCHOOL  
DISTRICT

155

COLTON

DELL RAPIDS  
SCHOOL DISTRICT

110

149

BALTIC  
SCHOOL DISTRICT

114

TRI-VALLEY SCHOOL DISTRICT NO. 49-6

LYONS

118

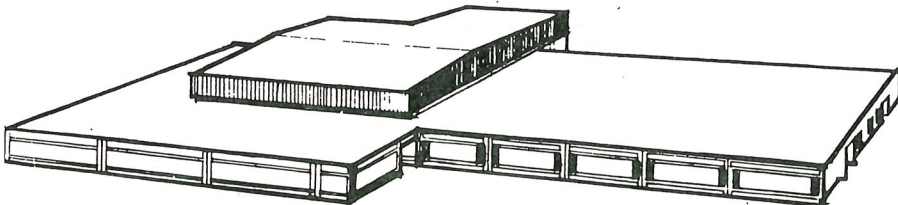
WEST CENTRAL  
SCHOOL DISTRICT

143

137

CROOKS

130



38

SIOUX FALLS  
SCHOOL DISTRICT

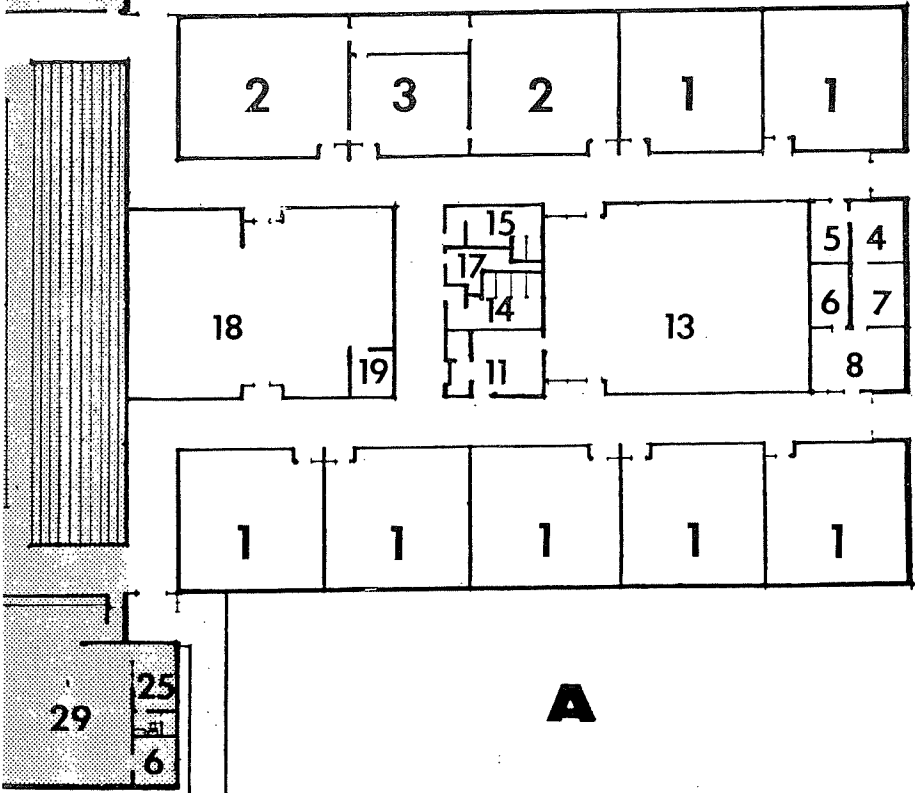
The high school plant represents the first phase of the long range plan for a central K-12 facility for the Tri-Valley school district. This first phase was built at a cost of \$1,189,575 and was financed by the issuance of capital outlay certificates approved by a vote of the district on June 26, existing capital outlay surplus, and revenue from property sales. To complete the entire facility K-12 would require an additional \$1,570,000. A centralized facility focuses on the sharing of materials and coordination of curriculum among teachers for better education and on the most efficient operation possible without sacrificing a sound educational program. Patrons will have an opportunity on **October 23** to vote to complete the facility to provide a quality education for the children of the Tri-Valley school district.

Below is a five year list of pre-school, elementary and high school children from the district.

Year	Pre-School (0-4)	Elementary	High School
1976	174	422	182
1977	172	424	190
1978	203	420	217
1979	229	455	207
1980	270	465	201

# LEGEND

E STORAGE &  
E AREA

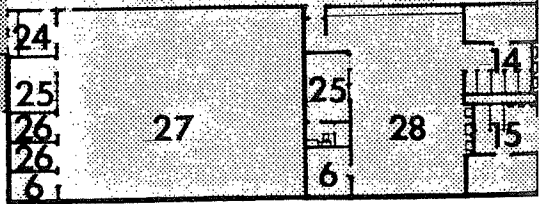
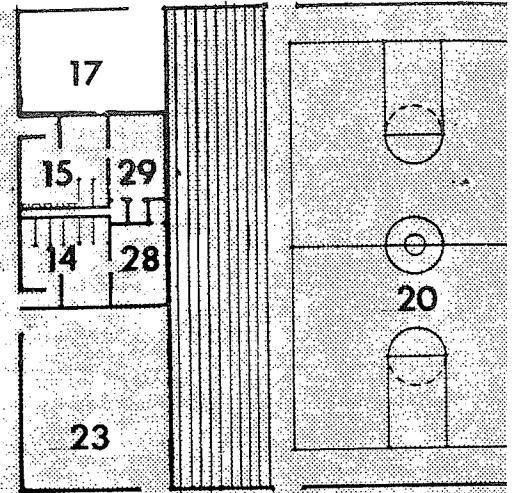
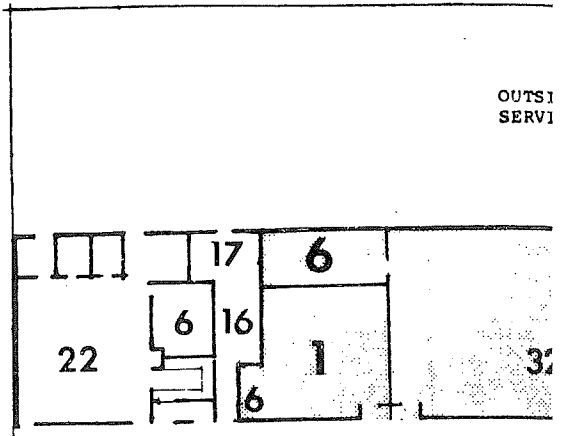
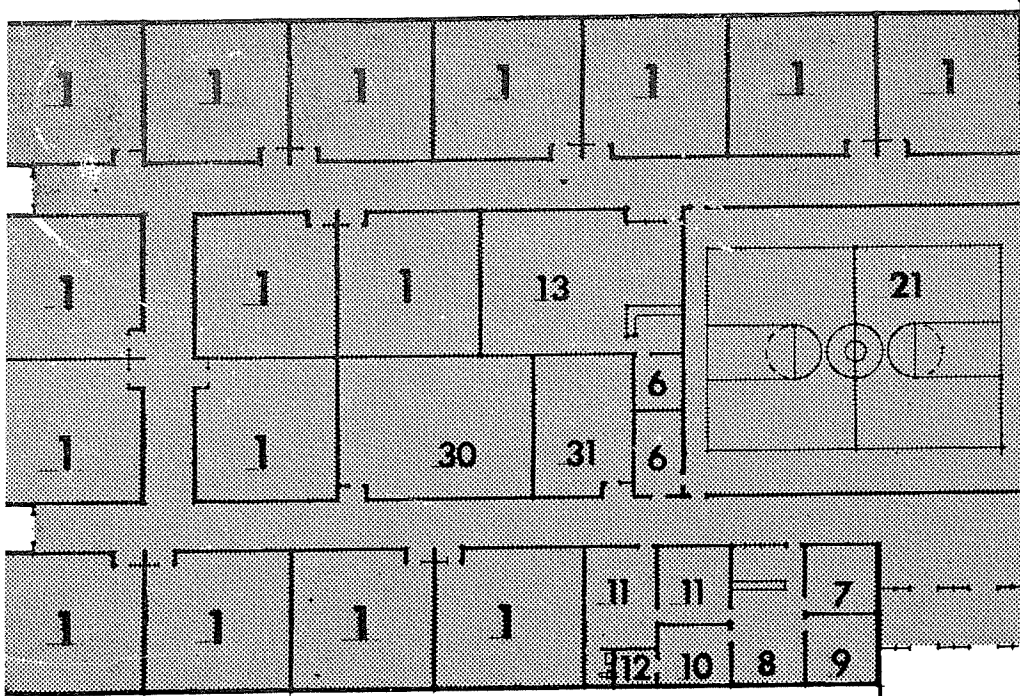


AREA A = 19,200 SQ. FT.  
 AREA B = 28,000 SQ. FT.  
 AREA C = 29,400 SQ. FT.  
 TOTAL = 76,600 SQ. FT.

Areas  
ture

1. Classroom
2. Science Lab
3. Science Lecture
4. Guidance
5. Waiting
6. Storage
7. Principal
8. Administrative Office
9. Superintendent
10. Business Manager
11. Faculty Workroom
12. Vault
13. Library
14. Girls' Restroom
15. Boys' Restroom
16. Custodian
17. Mechanical
18. Home Economics
19. Grooming
20. Gymnasium
21. Multi-purpose
22. Kitchen
23. Wrestling Room
24. Tickets
25. Office
26. Practice Music
27. Music
28. Girls' Lockers
29. Boys' Lockers
30. Kindergarten
31. Special Education
32. Shop

OUTSIDE  
SERVICES

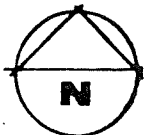


**C**

Future Elementary Addition

**B**

New Shell only - Shaded  
to be Finished in the



DRIVE & PARKING

# TRI-VALLEY SCHOOL

DISTRICT NO. 49-6

Date  
Unknown



Phone 446-3538  
Phone 543-5500

ADMINISTRATIVE OFFICE  
BOX 8  
LYONS, SOUTH DAKOTA 57041

The Tri-Valley School District 49-6 is located about 22 miles northeast of Sioux Falls, South Dakota. The District serves the communities and surrounding area of Colton, Crooks and Lyons. The District has two attendance centers, a K-3 facility located in Colton and a 4-12 facility located four miles south of Colton.

Being located so close to a metropolitan area gives the district the diverse opportunities that a large community has to offer and at the same time the advantages that smaller communities are able to offer resulting in close relationships between the school and the communities.

The District presently has an enrollment of 834 students and they are served by 58 certified teachers, three administrators and 27 support staff including educational aides, cooks and custodians. This ratio fosters a good teacher-pupil relationship making it possible for our experienced and highly qualified staff to work closely with students and parents in meeting the educational needs of an ever changing world.

Tri-Valley offers a comprehensive, well-rounded curriculum for its students which includes talented and gifted and special education programs K-12, pre-school program and an alternative high school along with a well-rounded program for co-curricular activities in athletics, drama, speech and music resulting in the opportunity for all students to be both academically and physically ready to meet the needs and challenges of today's technological society.

A high percentage of students go onto post-secondary schools and do well from the foundation and background they receive from the Tri-Valley District.

## Tri-Valley History

The Tri-Valley School System consists of the following former districts and portions of districts:

26 Rural	80 Huntimer	142 Roosevelt	52 Grinde
62 Colton	75 Hamre	83 Lawndale	63 Hillside
121 Rosehill	134 Carlberg	44 Crooks	124 Kirkland
104 Ginsbach	67 Clear Lake	91 Grand Meadow	148 Lyons
131 Willow Creek	93 Bya	39 Hilmoe	49 Steineke
42 Lyman Tyler	85 Foster	41 Excelsior	48 Peterson
135 Winter School	?? 3, 66		

The first schbol meeting for Crooks District 44 was held March 3, 1877. The first school however, wasn't opened until May 6, 1878 in the William A. Crooks sod house on the west side of the road, 1/2 mile north of the railroad tracks. This is presently the Leon Johnson family home. By 1880 a frame school house had been built. In 1911 or 1912 a two-room building was constructed, and in 1954 a brick building was erected.

The Lyons School was a one room building located at the same spot on which the middle school now stands. It was built in 1879-1880 and was 18X24 feet in size.

The first school in Colton was organized in 1879 and classes were held in a sod shanty located at the same place Tri-Valley grade school now stands. In 1881 a one-room building was erected.

In 1967 reorganization of students from Crooks to Colton began. Lower grades went to Crooks; upper and middle grades to Lyons and Colton. Conditions were less crowded, but the buildings were deteriorating. Property 2 1/2 miles northwest of Lyons was purchased. In 1979 capital outlay certificates were issued and a new High School site was selected. April, 1980 saw construction begin with completion in October, 3 1/2 months ahead of schedule. In January 1984 the gymnasium was dedicated, marking the completion of the entire 9 through 12 facility.

# TRI-VALLEY SCHOOL DISTRICT 49-6

## SCHOOL BOND ELECTION

DATE: DECEMBER 15, 1992

PLEASE BE AN INFORMED CITIZEN

1. Read factual information.
2. Think through the issue.
3. VOTE.

### Inside this issue

Introduction .....	2
Need .....	2
Proposal .....	3
Voter Information.....	3
Committees .....	3
Drawing .....	4
Cost of Investment .....	5

Keep Improving District Schools

## INTRODUCTION

This material has been compiled to give you the facts in order that you may be informed when voting on the school bond issue on December 15, 1992.

Time has been spent gathering information from patrons, faculty, administration and school board to determine the present and future needs of our school district.

The architectural firm, Koch, Hazard, Baltzer LTD of Sioux Falls, SD has been selected to help us build a plan that best meets the educational needs of the district.

We ask you to review this brochure to help understand the facts of the proposed bond issue. State law requires sixty percent of those voting must vote in favor of the issuance of the bonds in order for this measure to pass. Please be sure to vote!

## NEED

\*The preschool-third grade facility at Colton is not handicapped accessible and current fire codes could demand further changes.

\*Federally and State mandated programs such as speech therapy, special education, psychological services, health services and gifted education have created space problems in the school's facilities at all levels.

\*The new school additions will provide safe, modern facilities meeting all life, safety and building code requirements.

\*The school district has grown over 100 students in the last two years. This has crowded our classrooms and reduces the class offerings that could be offered.

\*Increasing state graduation requirements and proposed increased requirements for entrance to post-secondary schools require additional offerings by the school.

\*Immediate secondary space needs are science lab, computer lab, art area, and larger classrooms for English, math, and business.

\*Some classes are now being held on the stage and on a landing.

\*Hallway congestion and related noise, toilet facilities, teacher workroom, library space, guidance office space and office space is needed.

\*The building needs are going to intensify in the coming years as our area is continuing to grow and more homes are being built and more families continue to move into our school district.

\*Increased technology needs will require additional space in the classroom with appropriate space for interactive class communications.

## PROPOSAL

The third grade class will be added to the rural site. This elementary addition to the middle school will help alleviate overcrowding that exists currently in the middle school/elementary school. A TLC, Chapter 1, 5th/6th grade science class/art lab, 6 classrooms, special education classroom and toilet facilities. This equates to 11,821 sq.ft. This is also in accordance with the overall goal of having Preschool-12th grade at the rural site.

The high school addition has 13,026 sq.ft. This will have: 5 classrooms, an art room, computer room, study hall/lecture room, special education room, expand the guidance office area, a principal's office, toilet facilities, and small storage areas.

## VOTER INFORMATION

You must be registered to vote.

You must reside within the boundaries of the State, County, and School District.

All qualified voters residing within the boundaries of Tri-Valley School District may vote Tuesday, December 15, 1992.

The polling places are: Precinct III Crooks-at the Benton Hall, Precinct II Lyons-at the Fire Station, Precinct I Colton-at the Taopi Hall.

The polling places will be open from 8:00 AM to 7:00 PM.

To vote absentee, you must contact the Business Manager of the Tri-Valley School District.

Some options to use, if voting absentee:

1. Go to the Business Manager's Office at the Rural Site in person, request an absentee ballot and vote at that time.
2. Contact the Business Manager by phone to request a ballot.
3. Any ballots received after the polls close on December 15, 1992, are not accepted.
4. If it is an emergency, it is possible to request the Business Manager to come to your residence and have you vote and the Business Manager will get your ballot to the election officials. This is to be used by home-bound individuals and is extended as a courtesy privilege.

## COMMITTEES

TASK FORCE-Allan Beyer, Gary Brendtro, Bernie Burggraff, Maureen Eide, Joan Eitrheim, Phil Hoffman, Gary Kocmick, Michael McAreavey, Al Miron, Rick Oyen, Jack Schmidt, Jim Anderson, Paul Anderson, Frank Ashmore, Dale Cunningham, Gary Mark, Dave Quamen, William Van Asselt, Ron Walker, Marvin Wieman, Mike Boen, Gail Kaup, Cheryl Peterson, Roy Smith, Glen Swier, Paul Van Duyn, Mary Jo Vogel, Jim Williard, Derry Benson, Sharol Bargmann, Esther Boadwine, Jim/Elsie De Krey, Marla Hawes, Donna Jones, Lois Mouw, Randall Questad, Kris Smart, Rod Van Der Vliet, Cornie Van Helden, Carol Woltjer, Dan Yost.

CITIZEN STEERING COMMITTEE-Paul Anderson, Cheryl Anderson, Susie O'Hara, Pat Baumberger, Roger Benson, Joni Bunde, Rick Van Heerde, Rick Oyen, Maureen Eide, Preschool-6 Principal Dan Yost, 7-12 Principal Allan Beyer, and Superintendent Dr. Wade Olson.

People at the first NEIGHBORHOOD CANVAS COMMITTEE meeting: Merlin Anderson, Mike Boen, Harold Boer, Terry Bunde, Joe Burggraff, Wayne and Mary Ann Franken, Bonnie Gelderman, Barb Hanson, Donna Jones, Doug and Sandy Larson, Roy Nanson, Ann Olson, Kim Questad, Roger and Donna Swier, Merlin and Clarice Tebbe. Others indicating they would help are: Mark and Kris Anderson, R.E. "Barney" Bernards, Julie Bickett, Dan Burns, Leo Falconer, Doug and Connie Foster, Mary Jo Hausmann, Owen and Edi Holzbauer, Rod Leisinger, Michael McAreavey, Al Miron, William Papke, Pat Sechser, Roy Smith, Lois Van Der Vliet, and Tom and Connie Wilson.

## COST OF INVESTMENT

It has been determined that the best alternative to finance the school facility improvement program is through a combination of funds on hand, investment income, future use of approximately **\$0.78** more of the capital outlay fund levy for certificate debt payments, and general obligation school bonds. The size of the bond issue for the new school facilities will be \$500,000 of General Obligation School Bonds. The School District will also be issuing \$1,100,000 of Capital Outlay Certificates. Based on the average current bond market interest rates, the net bond fund levy increase required to make annual payments for the bond portion of the financing will be about **\$0.20** for each \$1,000 of valuation.

These levies will be reduced as the District's true and full valuation increases. If lower interest rates occur in the future, the District will also be able to reduce its levies by refinancing these proposed issues. Once the debt is issued, the payments cannot increase because interest rates are fixed at that time.

The following table illustrates property tax dollar net increases for these financings at various property values:

Assessed (True & Full) Valuation	Capital Outlay Certificate Annual Tax Increase	General Obligation Bond Annual Tax Increase	Total Annual Tax Increase	Total Monthly Tax Increase
\$10,000	\$7.80	\$2.00	\$9.80	<b>\$0.82</b>
20,000	15.60	4.00	19.60	<b>1.63</b>
30,000	23.40	6.00	29.40	<b>2.45</b>
40,000	31.20	8.00	39.20	<b>3.27</b>
50,000	39.00	10.00	49.00	<b>4.08</b>
75,000	58.50	15.00	73.50	<b>6.13</b>
100,000	78.00	20.00	98.00	<b>8.17</b>

### Agricultural Land Values (Per Quarter of Land)

	Assessed Valuation	Capital Outlay Certificate Annual Tax Increase	General Obligation Bond Annual Tax Increase	Total Annual Tax Increase (Per Qtr.)	Total Annual Tax Increase (Per Acre)
\$200/Acre	\$32,000	\$24.96	\$6.40	\$31.36	<b>\$0.20</b>
250/Acre	40,000	31.20	8.00	39.20	<b>.25</b>
500/Acre	80,000	62.40	16.00	78.40	<b>.49</b>
750/Acre	120,000	93.60	24.00	117.60	<b>.74</b>
1,000/Acre	160,000	124.80	32.00	156.80	<b>.98</b>

To calculate your own property tax obligation to support this building program, you find the TRUE AND FULL valuation on your individual property tax statement and multiply that number by .00098. (This is \$0.98 per \$1,000 of your true and full valuation.)

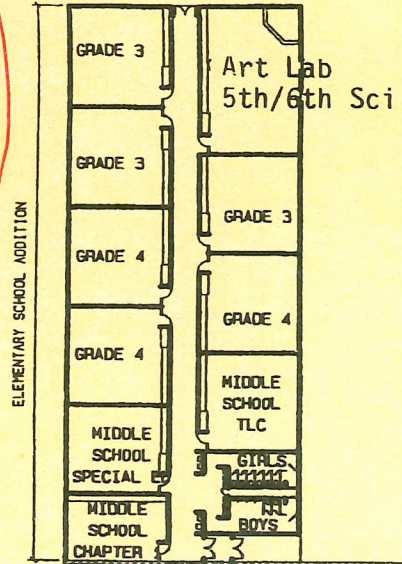
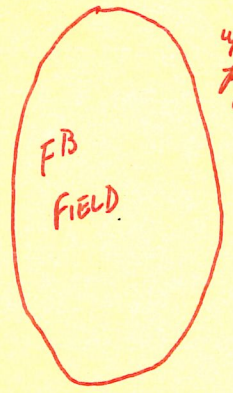
For example:     \$45,000     True and full valuation of a typical residence  
                           x.00098     net levy increases  
                           \$ 44.10     annual tax dollars for these school financings

ask move

MOVE  
6 trees NW  
3 pines E  
2 ash E  
1 locust E

9 - Trees billed to the  
3 - Trees billed to Hoopdown  
Need to be watered for 2 years  
M-W-F

Replace Broken pine  
x  
4 small x  
pine E



TRI-VALLEY SCHOOL DISTRICT 49-6

7/19/93

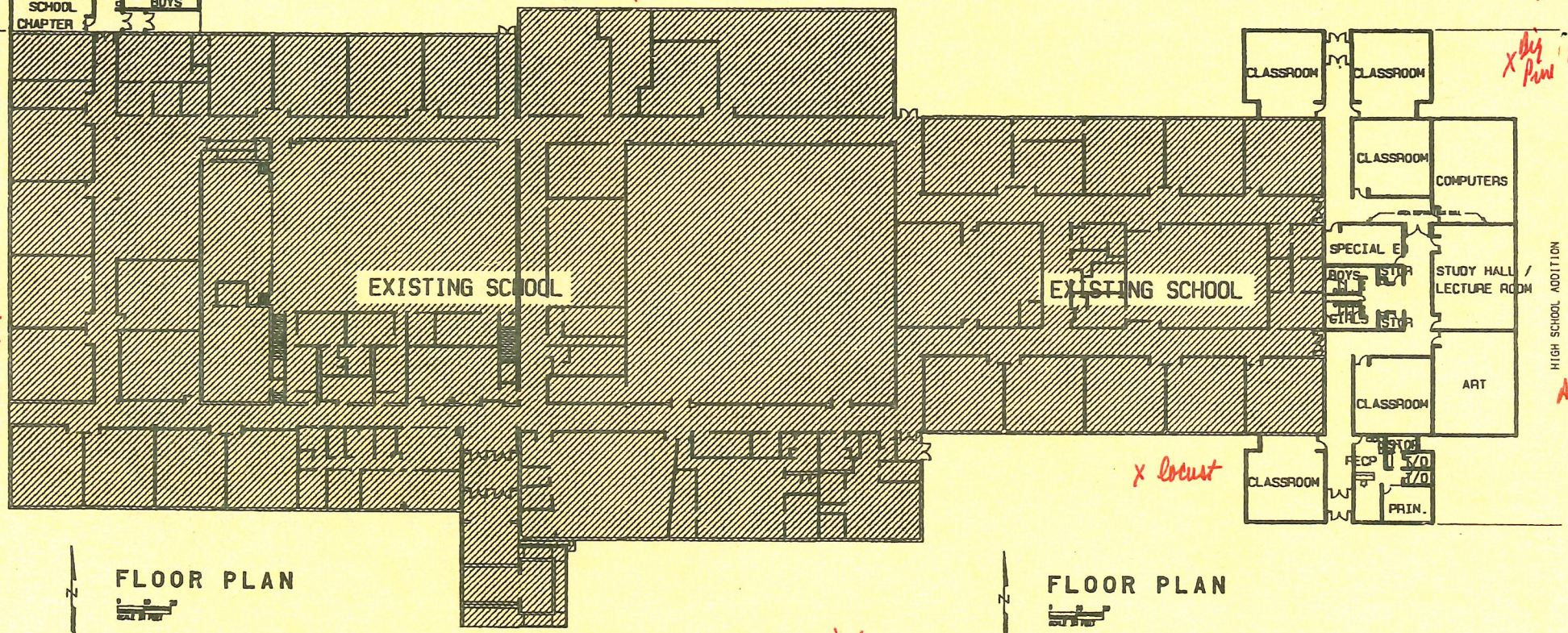
WRO w/Tim Tradt

Move

2 NW  
Ash-E  
ash-E  
Big pine

x Big Pine  
x Pine  
x Pine

High School Addition  
x Ash  
x Ash



FLOOR PLAN

FLOOR PLAN

HIGH SCHOOL SF = 13026  
ELEM. SCHOOL SF = 11821  
TOTAL SF = 24847

HIGH SCHOOL SF = 13026  
ELEM. SCHOOL SF = 11821  
TOTAL SF = 24847

Donna -- Please call Orrin -- part of Pddy project  
Need P.O for Tradt - 9 trees moved @ \$100 ea  
= Total \$ 1125

File 104-94

TRI-VALLEY SCHOOL DISTRICT 49-6  
RR2 BOX 300  
COLTON, SD 57018

NON-PROFIT ORG.

U.S. POSTAGE

**PAID**

Permit No. 3

Colton, SD

RURAL ROUTE or BOXHOLDER  
or  
CURRENT RESIDENT/OCCUPANT

# TRI-VALLEY SCHOOL DISTRICT 49-6

46450 252<sup>nd</sup> Street, Colton, SD 57018 • 446-3538 or 543-5500

“HOME OF THE MUSTANGS”



## Facts

- 97% Daily Attendance
- 1 Computer per 6 students
- Average class size K-3 - 18 students
- All Day, Every Day Kindergarten
- 10 Bus routes
- Total enrollment 776
- Bus service to each community
- After school day care/bus service

## New Facility Built In

- High School - 1983
- Middle School - 1989
- Elementary/High School - 1994
- Kindergarten/1<sup>st</sup> Grade - 1999

## Academics

- Science
- English
- Computers
- Math
- Social Studies
- Spanish
- Art
- Business
- Health
- Life Skills
- Distance Learning Courses
- Vocational/Agricultural
- Family and Consumer Science

The Tri-Valley School is located in the geographical center of the school district. The rural site is 4 miles south of the city of Colton, SD. Tri-Valley serves the Colton, Lyons and Crooks area of eastern South Dakota. This small town atmosphere helps promote the belief that all children can and will learn. Small schools offer a more personalized learning environment, providing students identity and sense of belonging. Students, teachers, and administrators know everyone. Participation in activities is increased. It is possible for administrators to know the students and how they are doing. Small schools make it possible to spot problems before they become too large to handle. The rural facility serves students in grades K-12. The average size for the district is 1 teacher for every 18 students. Current research demonstrates that, at least for the early grades, class size does indeed make a difference. Class size below 20 students leads to gains in student achievement and can help children learn to read well.

We at Tri-Valley are continuously striving to improve. Always feel welcome to visit the school and learn of the many opportunities provided to our students.



# TRI-VALLEY HIGH SCHOOL

46450 252<sup>nd</sup> Street, Colton, SD 57018 • 446-3538 or 543-5500

“HOME OF THE MUSTANGS”



The Tri-Valley High School was originally constructed in 1982. A major addition was completed in 1994. Tri-Valley High School offers many academic and extra-curricular opportunities for students in grades 9-12. 84% of our graduating seniors go on to some form of higher education and a large percentage of our students participate in an extra-curricular activity. Tri-Valley has built a reputation for high quality education as well as award winning extra curricular activities. The High School is focused on providing the students with the skills and knowledge they will need to succeed in school, the workplace and everyday life.

## General Information

1999-2000 Enrollment - 276  
Average Class Size - 21  
Average Attendance - 97%  
Administrator: Gary Evjen, Principal

## Faculty Information

Number of certified staff -23

## Technology

2 computer labs  
1 computer for each 6 students

## Community Involvement

Parent Teacher Organization (PTO)  
Booster Club  
Band Parents

## Special Attributes

Peer Helper  
Gifted Education  
Distance Learning  
Quiz Bowl  
Channel One

## ACADEMICS PROGRAM

Students must complete 22 credits. The credit requirements include:

English - 4 credits  
Mathematics - 2 credits  
Science - 2 credits  
Electives - 9 credits

Social Studies - 3 credits  
Computer Science - 1 credit  
Fine Arts - 1 credit

## EXTRA-CURRICULAR OPPORTUNITIES

### Athletics

Football  
Boys/Girls Basketball  
Wrestling  
Boys/Girls Track  
Volleyball  
Boys/Girls Cross Country  
Boys/Girls Golf  
Student Manager  
Statistician  
Cheerleading

### Speech

All School Plays  
One-Act Play  
Oral Interpretation

### Music

Band  
Mixed Chorus/Concert Choir  
Swing Choir  
Marching Band

### Publications

School Paper  
Annual

### Miscellaneous

FFA  
FHA  
Student Council  
Peer Helpers  
National Honor Society

# TRI-VALLEY MIDDLE SCHOOL

46450 252<sup>nd</sup> Street, Colton, SD 57018 • 446-3538 or 543-5500

“HOME OF THE MUSTANGS”



The Tri-Valley Middle School is operated with the students and their needs as it's focal point. Middle School students have a separate wing that keeps them separate from other grades and helps to make the middle level concept effective. Middle School students are offered a wide variety of exploratory classes along with the basic curriculum. Small class size allows teachers to have time to interact with the students. This interaction fosters a positive caring, learning environment.

## General Information

1999-2000 Enrollment - 234

Average Class Size - 23

Attendance Rate - 97%

Administrator: Gary Evjen, Principal

## Technology

Keyboarding lab

High Speed internet access

1 computer for each 6 students

## Community Involvement

Parent Teacher Organization (PTO)

Optimist Club

## Special Attributes

Gifted Education

Mini-Courses

Quiz Bowl

Odyssey of the Mind

Nursing Services

Channel One

After School Tutor Program

## Academics

Math

Science

Social Studies

English

Physical Education/Health

Computers

Art

Life Skills

Home Economics

Reading/Spelling

## Extra-Curricular Opportunities

Boys/Girls Basketball

Football

Volleyball

Boys/Girls Track

Wrestling

Cheerleading

## Organizations

Peer Helpers

Student Council

# TRI-VALLEY ELEMENTARY SCHOOL

46450 252<sup>nd</sup> Street, Colton, SD 57018 • 446-3538 or 543-5500

“HOME OF THE MUSTANGS”



The Tri-Valley Elementary School was originally constructed in 1987 with grades 4-6 and additions in 1992 added grades 2-3. Fall 1999 new additions included, K-1 classrooms and other special classrooms. The K-12 Tri-Valley students will now be under one roof at the rural site. Keeping class size small has been a priority for the district. The school's small town atmosphere promotes the belief that working together all children can and will learn.

## General Information

1999-2000 Enrollment - 273  
Average Class Size - 19  
Average Attendance - 97.05%  
Administrator: Carol Ersland, Principal

## Faculty Information

Average Years of Experience - 16  
Number of Certified Staff - 32  
Staff to Student Ratio - 1 to 13

## Technology

2 computer labs available for student use  
80 computers available for students  
1 computer for every 4 students

## Special Attributes

Title I Resources Available  
Reading Recovery  
Gifted Education  
Early Childhood  
All Day-Every Day Kindergarten  
Special Education Program  
OT/PT Services  
Speech  
Nurse on duty daily  
After School/Summer Program for K-8 Students  
Odyssey of the Mind

## Academics

Math  
Science  
Social Studies  
English  
Physical Education/Health  
Computer  
Reading/VoWac (Phonics)  
Spelling  
Art

## Fine Arts

Grades K-6 Vocal Music  
Grades 5-6 Band

## Community Involvement

Parent Teacher Organization (PTO)  
Parent Volunteer Program

## Organizations

Student Council 5-6 Grades  
DARE program

