

Harvey Public School District



Superintendent/AD ~ Mr. Daniel Stutlien
Harvey High Principal ~ Mr. Derrick Gross
Harvey Elementary Principal ~ Dr. Teresa Harding
Business Manager/Human Resources ~ Mrs. Louisa Harness

200 North Street East
Harvey, ND 58341

www.harvey.k12.nd.us

HPSD Board Approved ~ September 21, 2022

Vanessa Anderson
Derrick Gross
Danica Grossman
Jared Hanson
Teresa Harding
Brooke Heil
Kayla Heitmann
Collette Hertz
Beth Huseeth
Ashley Ketterling

Caitlyn Roemmich
Sara Schindler
Joye Stolz
Daniel Stutlien
Vondell Stutlien
Melissa Vollmer
Kathy Walsh
Julie Weisser
Noah Ziegler

HPSD Return to Learn Plan

Harvey Public Schools believes:

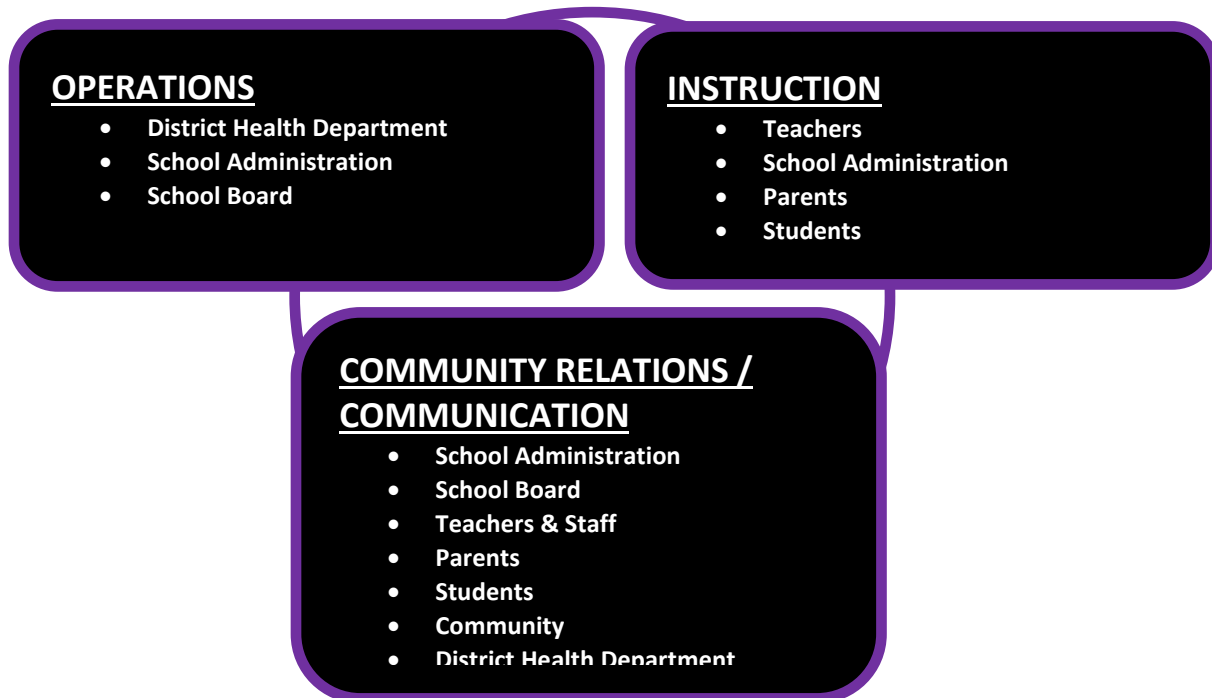
- Regardless of the spread of COVID-19 in our community...
 - The purpose of education is to equip students with the knowledge and skills necessary to become active, informed, and productive members of society. Our public schools have a responsibility to foster the growth of intelligent and informed citizens.
 - All individuals are entitled to equal rights, freedoms, and opportunities regardless of economic, cultural, or intellectual differences. The District is committed to creating and preserving a learning and working environment.
 - Only through the study of basic subject matter, history, culture and fine arts will students be prepared for both the practical tasks and complexities of the world. The District will provide all students with opportunities to participate in varied curricular offerings.
 - Education should aid in the development of good character, self-respect and self-worth, and offer opportunities to form satisfying and responsible relationships with other people. The District will offer programs that allow students to practice the skills of family and community living and that promote an appreciation for health and safety.
 - Education must look to the future. The District will offer programs to help equip students with skills that may be demanded by our future society, that help students select appropriate occupations, and that provide opportunities to develop worthwhile leisure time activities. The District will also offer programs that teach money, property, and resource management techniques and conservation practices in order to assist students with planning for the future.
 - Educational experiences should be timed in accordance with students' readiness for them. All district programs will take into account factors such as age, maturity, and readiness.
 - Appropriate discipline helps ensure that the educational program operates efficiently and helps mold students into upstanding citizens. The Board shall develop policies in accordance with law to ensure administrators are equipped to appropriately respond to disciplinary issues.
 - Parents and the community should serve as partners with schools. It takes the combined effort of all members of the community to develop and maintain an educational program that meets the objectives delineated above. District schools will embrace the support and reflect the expectations of the community. Quality education of our young people should be both the top priority and the proudest achievement of our community!

Harvey Public Schools Core Commitments:

- Regardless of the spread of COVID-19 in our community...We believe compassionate, resilient, and innovative people have the power to make a positive difference in the world.
 - Therefore...As an HPS community, we will consistently bring excitement, a high level of character, and compassion for children in all educational endeavors.
 - As an HPS community, we will engage students using innovative practices empowering them to reach or exceed academic standards to become lifelong learners.

COVID-19 Response Coordination:

This organizational structure was crafted to assist in the development and monitoring of the District's return to learning plan. This structure identifies leaders and guiding team members that will serve as a voice in how the District responds to COVID-19 during the school year. This plan is designed to address the issues of reopening schools as well as to provide a nimble and responsive process to address issues that may not be recognized today.



The three components have been identified as key operational teams that consist of multiple departments. Each operational team will work implement the return to learn plan and address challenges as they arise.

COVID-19 Building Level Coordinators:

Each of our school buildings will have an identified COVID-19 Coordinator who will be responsible for the health and safety preparedness and response planning. Coordinators will make themselves available to the NDDoH 24 hours a day / 7 days a week to respond to phone calls from public health. This position will assist public health in identifying and notifying close contacts in the school setting. The coordinator will be responsible for reporting cases of COVID-19, found in the school setting, to health officials and the State Superintendent's office.



Dr. Teresa Harding, Elementary Principal, will assume the role of building level coordinator at Harvey Elementary School. If the coordinator is unable to be reached the secondary contact will be Mr. Daniel W. Stutlien, Supt.

Mr. Derrick Gross, Secondary Principal, will assume the role of building level coordinator at Harvey High School. If the coordinator is unable to be reached the secondary contact will be Mr. Daniel W. Stutlien, Supt.

Health & Safety Guidance:

The Harvey Public School District strives to provide a healthy and safe environment for all who occupy our schools. The following guidelines are intended to provide a framework for the district's response to COVID-19.

Best Intentions:

Despite taking every reasonable precaution, there is no guarantee that our District's schools will be without risk as it relates to COVID-19. At some point, the virus will likely be present on our buses, in our schools, at our activities, and in our community. In certain situations, social distancing is simply not possible in a school setting. Our actions, as outlined in this plan, will not completely prevent any student or staff member from either potentially being in contact with or contracting the virus.

Health Resources:

ND Department of Public Instruction ~ <https://www.nd.gov/dpi/parentscommunity/nddpi-updates-and-guidance-covid-19>

ND Department of Health ~ <https://www.health.nd.gov/diseases-conditions/coronavirus>

Center for Disease Control and Prevention ~ <https://www.cdc.gov/coronavirus/2019-nCoV/index.html>

AREA of OPERATIONS ~ School Activities:

<u>BLUE</u>	Normal Operating Procedures.
<u>GREEN</u>	Normal Operating Procedures.
<u>YELLOW</u>	Wash/sanitize hands upon entry, visitors in respective sections, and social distancing with bleachers marked may be used. Will follow regulations set by NDHSAA.
<u>Orange</u>	Wash/sanitize hands upon entry, visitors in respective sections, and social distancing with bleachers may be used. Masks optional for all non-participants. Will follow regulations set by NDHSAA.
<u>RED</u>	Attendance limited to essential activities personnel only. Temperature scan of all essential activities personnel at indoor events, wash/sanitize hands upon entry, masks strongly recommended for all non-players/participants. No concessions available. If School closed: No activities.

AREA of OPERATIONS ~ School Classrooms:

<u>BLUE</u>	Normal Operating Procedures.
<u>GREEN</u>	Normal Operating Procedures.
<u>YELLOW</u>	Seating assigned in all classrooms. Facemasks optional when/if directed when social distancing is not possible. Electives/specials <i>MAY</i> be limited.
<u>Orange</u>	Seating assigned following social distancing guidelines, facemasks recommended when/if directed when social distancing is not possible. Reduced in-person attendance, lessons recorded (<i>flipped classroom</i>) for video lesson library, textbooks home where possible, and focus on core subjects.
<u>RED</u>	School closed: Classes by distance learning (<i>textbooks sent home where/when possible</i>).

AREA of OPERATIONS ~ School Food Service:

<u>BLUE</u>	Normal Operating Procedures.
<u>GREEN</u>	Normal Operating Procedures.
<u>YELLOW</u>	Mandatory handwashing/sanitizing, social distancing may be utilized, clean and disinfect areas daily.
<u>Orange</u>	Mandatory handwashing/sanitizing, social distancing may be utilized, clean and disinfect areas daily, pre-packaged meals utilizing disposable packaging and utensils may be used.
<u>RED</u>	Mandatory handwashing/sanitizing, social distancing may be utilized, clean and disinfect areas daily, pre-packaged meals utilizing disposable packaging and utensils may be used. If school closed: Food service, if allowed, by grab & go for off-site consumption.

AREA of OPERATIONS ~ School Transportation:

<u>BLUE</u>	Normal Operating Procedures.
<u>GREEN</u>	Normal Operating Procedures.
<u>YELLOW</u>	Assigned seating may be utilized, clean bus after each route, daily disinfecting.
<u>Orange</u>	Assigned seating may be utilized, masks optional, clean bus after each route, and daily disinfecting.
<u>RED</u>	Assigned seating may be utilized, masks recommended, clean bus after each route, and daily disinfecting. If School closed: No Transportation required.

AREA of OPERATIONS ~ School Visitors/Guests:

<u>BLUE</u>	Normal Operating Procedures.
<u>GREEN</u>	Normal Operating Procedures.
<u>YELLOW</u>	Only necessary visitors (<i>NO lunch visitors</i>).
<u>Orange</u>	No visitors except certified, professional consultants. Masks optional for certified, professional consultants.
<u>RED</u>	No visitors except certified, professional consultants. Masks recommended for certified, professional consultants. If School closed: No visitors or guests. Certified, professional consultation by distance learning.

Student & Staff Health and Safety Protocols:

Monitoring the health of students and staff will be an important component of a safe and healthy educational environment. The Harvey Public School District will take the following measures to ensure all students and staff are healthy while they are at school:

Identifying Students & Staff at Higher Risk

- Each school office will inquire of all employees if they are at-risk, based on a health professionals' diagnosis. The Business Office will work in partnership with each building principal/director and the employee to coordinate adjustments to the work schedule or workplace.
- When the NDDoH or Wells County District Health informs the district of a student or staff member that is COVID-19 positive, that information will be passed on to Business Office and the building principal as allowable within district policy and law.

Isolation & Quarantine

- Definitions:
 - Isolation ~ For people who are already sick from the virus. A prevention strategy used to separate people who are sick with the virus from healthy people.
 - Quarantine ~ For people who are not sick but have been exposed to the virus. A prevention strategy used to monitor people who were exposed for a period of time.
- Harvey Public School District will follow isolation and quarantine guidelines and directives as set by NDDOH and Wells County District Health.

- Harvey Public School District may engage in contact tracing, depending on the impact of COVID-19 within the school and community.

Return to School

- When a student or staff member has been isolated or quarantined as directed by NDDoH or Wells County District Health, they will be allowed to return to school after being cleared by the NDDoH.