

~ The Primary Post ~

Kiley Schumacher, Principal

Jennifer Register, Assistant Principal

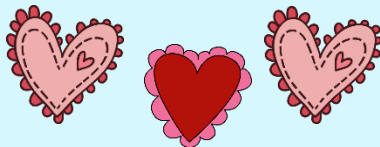
February 2021



February
15

Important Dates

- ◆ February 1 - 5 - National School Counselor's Week! Little Pine Burr Yearbooks on Sale - \$20!
- ◆ February 1 - DRA Testing begins for Kindergarten Only!
- ◆ February 2 - Groundhog Day! Progress Reports Go Home!
- ◆ February 4 - 100th Day of School!
- ◆ February 8 - DRA Testing begins for 1st Grade Only!
- ◆ February 11 - Valentine's Day activities in classrooms!
- ◆ February 12 - Staff Development Day...No School for Students!
- ◆ February 14 - Valentine's Day!
- ◆ February 15 - School Holiday - President's Day!
- ◆ February 19 - Kindergarten Career Day! End of the 4th Six Weeks!
- ◆ February 22 - Beginning of the 5th Six Weeks!
- ◆ February 26 - Report Cards go home!



LOOKING AHEAD:

- ◆ March 8 - 11 - Texas Public Schools Week!
- ◆ March 12 - Teacher Work Day - No School for Students!
- ◆ March 14 - Daylight Savings Time Begins!
- ◆ March 15 - 19 - Spring Break!

Principal's News

As you know, Groundhog Day is Tuesday! Will "Punxsutawney Phil" see his shadow? According to legend, if the answer is "yes"...then we will have 6 more weeks of winter! If the answer is "no"...then spring will arrive early!



Regardless of the legend, spring is right around the corner and that is when schedules tend to get wild with baseball, softball, soccer and many other spring activities. With that said, please continue to keep your child's education at the top of your priority list.

Counselor's Corner

Dear Parents,

This six weeks our character education theme is CARING. In class, students will be focusing on how to show others that they care through kindness, sharing, compassion, and helpfulness. They will be remembering to treat others as they would like to be treated. Students will be concentrating on these five healthy habits:

- Share with others.
- Say something kind.



Moreover, our school takes several field trips during the spring semester and, I know that many of you will want to help on these fun days. **Remember...In order to assist on these trips, you must be on the Approved Volunteer List. In addition, due to Covid-19, some venues have limited capacity. Because of that, there might be some field trips where parents are NOT allowed to attend!**

Thanks so much for your cooperation and your support!



Happy Valentine's Day!

- Treat others like you want to be treated.
- Be helpful.
- Think about what you say to others.

We hope students will become more compassionate people through these lessons. Children naturally are loving people; therefore, it is especially nice to focus on and to encourage these positive life-lessons.

Sincerely,
Sherri Penn Smith - Counselor
Carthage Primary School