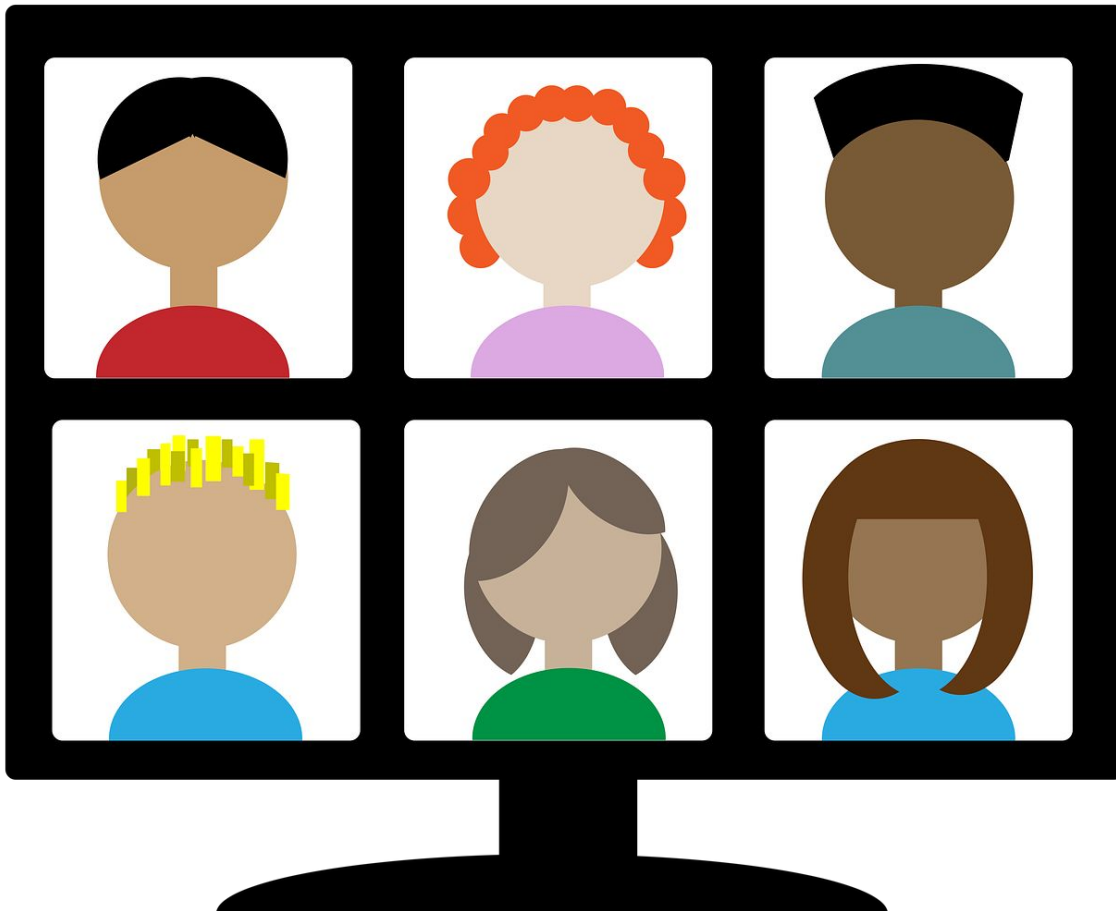




Live Learning Opportunities Campus Google Meet Schedules



Please find the schedule that corresponds to your child's grade level. This is where you will find when Live Learning Opportunities with the teacher will be offered. Additionally, your child's teacher may schedule extra Live Learning Opportunities to provide extra support.



Elementary Live Learning Schedule

Grade Pre-Kindergarten

7:45 am - 8:25 am	Supplemental Online Programs (ABCya, ABCMouse, etc.)
8:45 am - 9:15 am	Morning Meeting Live Lesson
9:20 am - 10:05 am	Fine Arts/PE Live Lesson
10:10 am - 10:45 am	Google Classroom Assignment (independent work)
10:50 am - 11:20 am	Lunch Bunch (live Google Meet with friends)
12:00 pm - 12:30 pm	Read Aloud
1:00 pm - 3:30 pm	Small Groups/Relationship Building with teacher scheduled small groups

***At times when teachers are not presenting a live lesson, they will be holding office hours. If you have any questions or concerns, they will be available during those times.**

****Any gaps in time can be used for completion of assignments, social skill building, hands-on play time, or resting.**

-----EXPECTATIONS CHECKLIST-----

Students

- Check your Google Classroom daily
- Make sure you are working in your quiet space (turn off the TV/radio while you complete assignments)
- Attend Live Learning lessons daily unless unable to do so; watch recorded lessons in Google Classroom if unable to attend live
- Complete lesson activities/assignments each day
- Ask for help when you need it
- Remember to charge your device and MiFi each night

Parents

- Review your child's Google Classroom daily to see what assignments they are responsible for
- Provide your child with the supplies needed to complete assignments
- Keep open communication with your child's teacher
- Contact teachers during office hours to get help
- Help your child find a place where work can be completed with minimal distractions
- Ask your child questions about their learning for the day and celebrate their success



Elementary Live Learning Schedule

Grades K - 2

7:45 am - 8:25 am	Supplemental Online Programs (Wowzers, Amplify, etc.)
8:30 am - 9:20 am	ELAR Live Lesson (with Integrated Social Studies)
9:25 am to 10:30 am	Google Classroom Assignment (independent work)
10:35 am - 11:20 am	Fine Arts/PE Live Lesson
11:25 am - 11:55 am	Lunch Bunch (live Google Meet with friends)
12:00 pm - 12:50 pm	Math Live Lesson (with Integrated Science)
12:55 pm - 2:10 pm	Google Classroom Assignment (independent work)
2:15 pm - 3:30 pm	Small Groups/Relationship Building with teacher scheduled small groups

***At times when teachers are not presenting a live lesson, they will be holding office hours. If you have any questions or concerns, they will be available during those times.**

-----EXPECTATIONS CHECKLIST-----

Students

- Check your Google Classroom daily
- Make sure you are working in your quiet space (turn off the TV/radio while you complete assignments)
- Attend Live Learning lessons daily unless unable to do so; watch recorded lessons in Google Classroom if unable to attend live
- Complete lesson activities/assignments each day
- Utilize online programs during the first 45 minutes of the day
- Ask for help when you need it
- Remember to charge your device and MiFi each night

Parents

- Review your child's Google Classroom daily to see what assignments they are responsible for
- Provide your child with the supplies needed to complete assignments
- Keep open communication with your child's teacher
- Contact teachers during office hours to get help
- Remind your child about their due dates
- Help your child find a place where work can be completed with minimal distractions
- Ask your child questions about their learning for the day and celebrate their success



Elementary Live Learning Schedule

Grades 3 - 6

7:45 am - 8:25 am	Supplemental Online Programs (Wowzers, Amplify, etc.)
8:30 am - 9:15 am	3rd & 5th Math/4th & 6th ELAR Live Lesson
9:20 am - 10:05 am	4th & 6th Math/3rd & 5th ELAR Live Lesson
10:10 am - 11:20 am	Google Classroom Assignment (independent work)
11:25 am - 12:10 pm	Music/PE/Art Live Lesson
12:15 pm - 12:45 pm	Lunch Bunch (live Google Meet with friends)
12:50 pm - 1:35 pm	4th & 6th Science/3rd & 5th Social Studies Live Lesson
1:40 pm - 2:25 pm	3rd & 5th Science/4th & 6th Social Studies Live Lesson
2:30 pm - 3:30 pm	Google Classroom Assignment (independent work)

***At times when teachers are not presenting a live lesson, they will be holding office hours. If you have any questions or concerns, they will be available during those times.**

-----EXPECTATIONS CHECKLIST-----

Students

- Check your Google Classroom daily
- Make sure you are working in your quiet space (turn off the TV/radio while you complete assignments)
- Attend Live Learning lessons daily unless unable to do so; watch recorded lessons in Google Classroom if unable to attend live
- Complete lesson activities/assignments each day
- Utilize online programs during the first 45 minutes of the day
- Ask for help when you need it
- Remember to charge your device and MiFi each night

Parents

- Review your child's Google Classroom daily to see what assignments they are responsible for
- Provide your child with the supplies needed to complete assignments
- Keep open communication with your child's teacher
- Contact teachers during office hours to get help
- Remind your child about their due dates
- Help your child find a place where work can be completed with minimal distractions
- Ask your child questions about their learning for the day and celebrate their success



Middle School Live Learning Schedule

7:45 am - 8:25 am	Supplemental Online Programs (Achieve 3000, Amplify, etc.)
8:30 - 9:05	7th Math, 8th Science
9:10 - 9:45	7th ELA, 8th Math
9:50 - 10:25	7th History, 8th ELA/Lit
10:30 - 11:45	Google Classroom Assignment (independent work)
11:50 - 12:20	Lunch
12:25 - 1:00	7th Science, 8th History
1:05 - 1:40	7th & 8th Electives
1:45 - 2:20	7th Lit, 8th Career Investigations
2:25 - 3:30	Google Classroom Assignment (independent work)

***At times when teachers are not presenting a live lesson, they will be holding office hours. If you have any questions or concerns, they will be available during those times.**

-----EXPECTATIONS CHECKLIST-----

Students

- Check your Google Classroom daily
- Make sure you are working in your quiet space (turn off the TV/radio while you complete assignments)
- Attend Live Learning lessons daily unless unable to do so; watch recorded lessons in Google Classroom if unable to attend live
- Complete lesson activities/assignments each day
- Utilize online programs during the first 45 minutes of the day
- Ask for help when you need it
- Remember to charge your device and MiFi each night

Parents

- Review your child's Google Classroom daily to see what assignments they are responsible for
- Provide your child with the supplies needed to complete assignments
- Keep open communication with your child's teacher
- Contact teachers during office hours to get help
- Remind your child about their due dates
- Help your child find a place where work can be completed with minimal distractions
- Ask your child questions about their learning for the day and celebrate their success



High School Live Learning Schedule

7:45 am - 8:25 am	Supplemental Online Programs (Achieve 3000, Amplify, etc.)
8:30 am - 9:05 am	Banking, HS Art, Welding, Education, Financial Literacy, Algebra 1, Spanish 1
9:10 am - 9:45 am	Digital Media, English 1, Algebra 2, Economics, Biology
9:50 am - 10:25 am	Graphic Design, English 2, Algebra 1, US History
10:30 am - 11:45 am	Google Classroom Assignment (independent work)
11:50 am - 12:20 pm	Lunch
12:25 pm - 1:00 pm	Business English, English 4, Chemistry, IPC, Geometry, Small Machines
1:05 pm - 1:40 pm	BUIMM, English 3, World Geography, Pre Cal, Principles of Ag, Financial Math
1:45 pm - 2:20 pm	Journalism, A&P, Plant and Soil, World History, Spanish 2, Algebraic Reasoning
2:25 pm - 3:30 pm	Google Classroom Assignment (independent work)

***At times when teachers are not presenting a live lesson, they will be holding office hours. If you have any questions or concerns, they will be available during those times. Please prioritize your time. Athletics will take place after 3:30.**

-----EXPECTATIONS CHECKLIST-----

Students

- Check your Google Classroom daily
- Make sure you are working in your quiet space (turn off the TV/radio while you complete assignments)
- Attend Live Learning lessons daily unless unable to do so; watch recorded lessons in Google Classroom if unable to attend live
- Complete lesson activities/assignments each day
- Utilize online programs during the first 45 minutes of the day
- Ask for help when you need it
- Remember to charge your device and MiFi each night

Parents

- Review your child's Google Classroom daily to see what assignments they are responsible for
- Provide your child with the supplies needed to complete assignments
- Keep open communication with your child's teacher
- Contact teachers during office hours to get help
- Remind your child about their due dates
- Help your child find a place where work can be completed with minimal distractions
- Ask your child questions about their learning for the day and celebrate their success