

2013 - 2014



# RSU 29

## Preparing Learners for a Changing World



### Strategic Educational Plan: Roadmap for Results

Strategic planning has been identified as an organization's process of defining its strategy, or direction, and making decisions on allocating its resources in pursuit of this strategy. The RSU 29 Strategic Plan lays out how we will realize our mission and work toward our vision. Our Roadmap for Results, as laid out in this document, will set the path for our district that will lead to improved outcomes for all of our students.

Our vision is for students to come to school every day expecting to be challenged, no matter their ability level or background. When they graduate, they will leave us well prepared to choose a college or career path that is right for them. They will leave us knowing that there is nothing so satisfying to the spirit or defining of character than giving all to a difficult task.

Our important allies in the community - families, colleges, businesses and nonprofit partners - will be engaged in our mission, and we will be ready to benefit from their collective wisdom. Classrooms will lose borders and become seamlessly connected to neighborhoods and the world.

This is the RSU #29 we envision. To get there, we have established two foundational pillars that intertwine to support a student-centered approach to education. Like Aristotle, we believe the whole is more than the sum of its parts. These pillars anchor our decisions and propel us forward as we accelerate our rate of change to keep pace with a rapidly changing world. These pillars - Innovative Education and Community Collaboration - represent our commitment to our students.

#### District Administration

**Mike Hammer**

Superintendent of Schools

[mihammer@rsu29.org](mailto:mihammer@rsu29.org)

207-532- 6555

For detailed district information and more  
[www.rsu29.org](http://www.rsu29.org)

Become a Facebook Fan:  
[facebook.com/Rsu29SchoolDistrict](https://facebook.com/Rsu29SchoolDistrict)



**RSU 29**

## **Roadmap for Results**



### **Table of Contents**

**Contents**

**Mission and Vision**

**Guiding Principles**

**Core Beliefs**

**Strategic Educational Plan**

**Planning Team Membership**

RSU 29

## Roadmap for Results



## Mission Statement

The mission of RSU 29 is to prepare all students to be college and career ready by attaining proficiency in core academic content through engagement in rigorous, student-centered learning in a safe and technology rich environment.



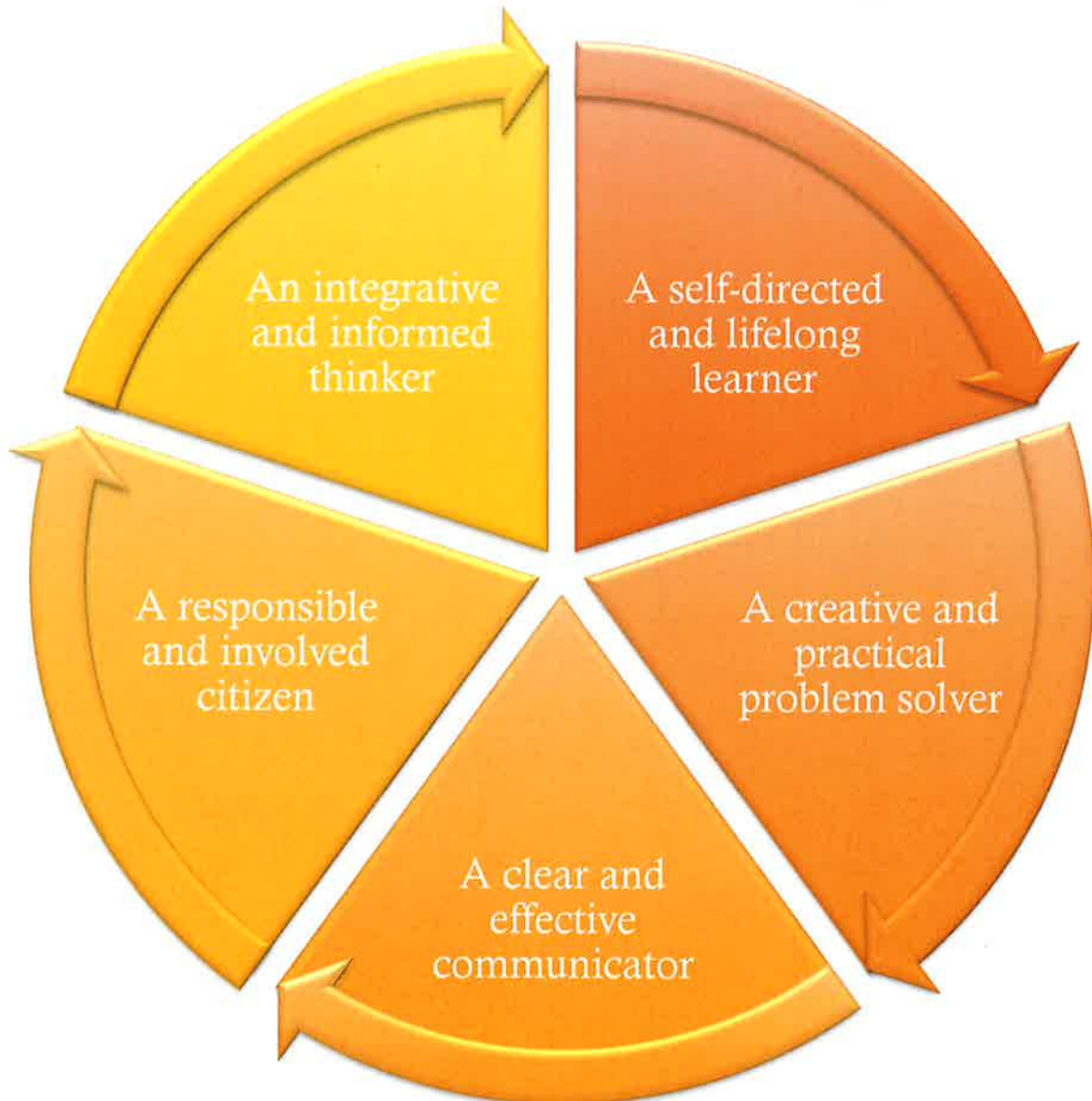
## Vision

Our students will be empowered with the academic, personal, and social knowledge and skills needed to build fulfilling and engaged lives.





# Guiding Principles





# Core Beliefs

Clear learning targets and continuous reflection are essential to successful teaching and learning.

Challenging standards of performance are expected for all members of the learning community.

We value decision-making and actions guided by the principles of integrity, empathy, responsibility, and respect for self and others.

Learning flourishes in a safe and caring environment.

Student learning requires complex thinking and problem solving skills to meet student needs.

Educators require ongoing professional development in order to facilitate and model innovative education.

All students can learn in different ways, in different settings, at different rates, for different futures.

In an ever changing world, we believe...

Positive relationships among parents, community, and schools promote shared responsibility for providing the tools for student success.

RSU 29

Roadmap for Results



# RSU 29

## Overarching Goals

### Innovative Education:

To provide an innovative educational experience that prepares learners for the changing world.

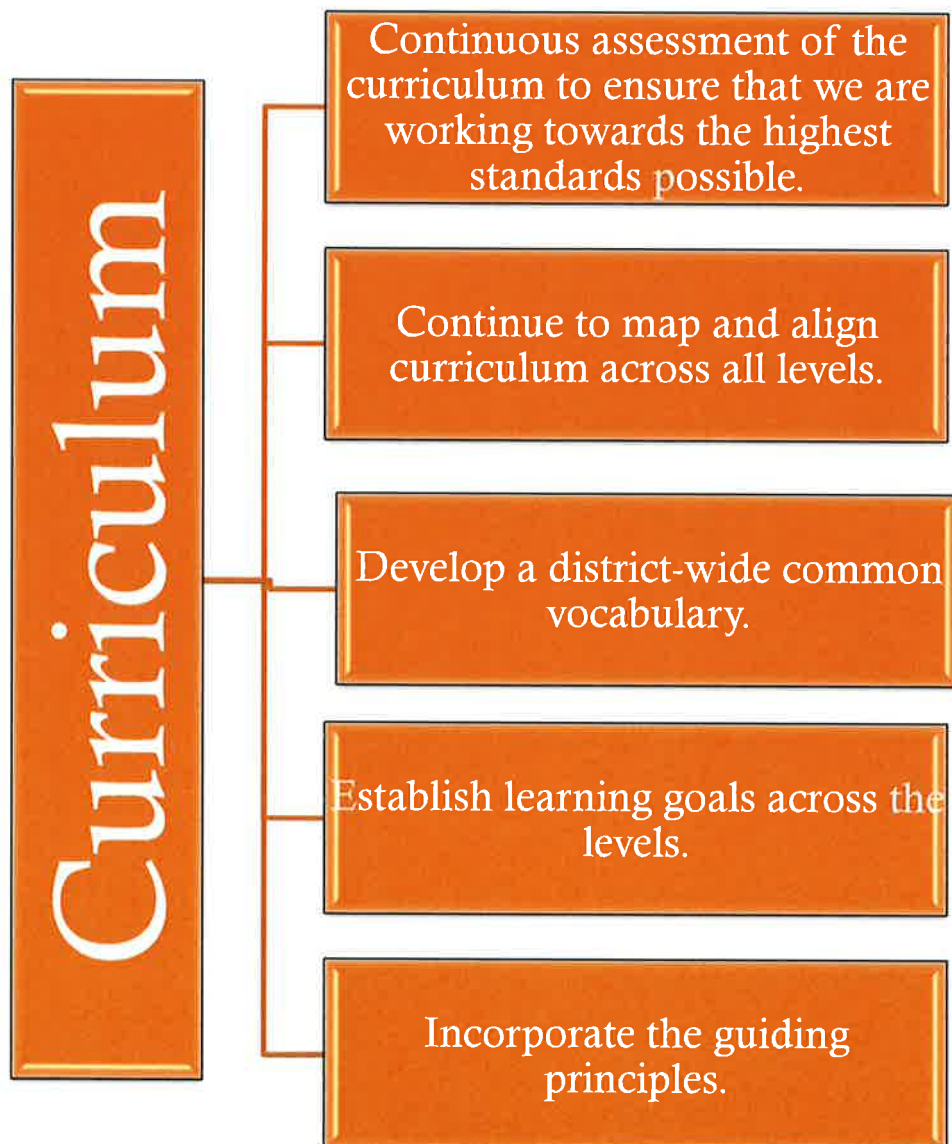
### Community Collaboration:

To develop collaborative community connections and partnerships that enhance the mission and vision of the RSU #29 School District.



## Innovative Education: Curriculum

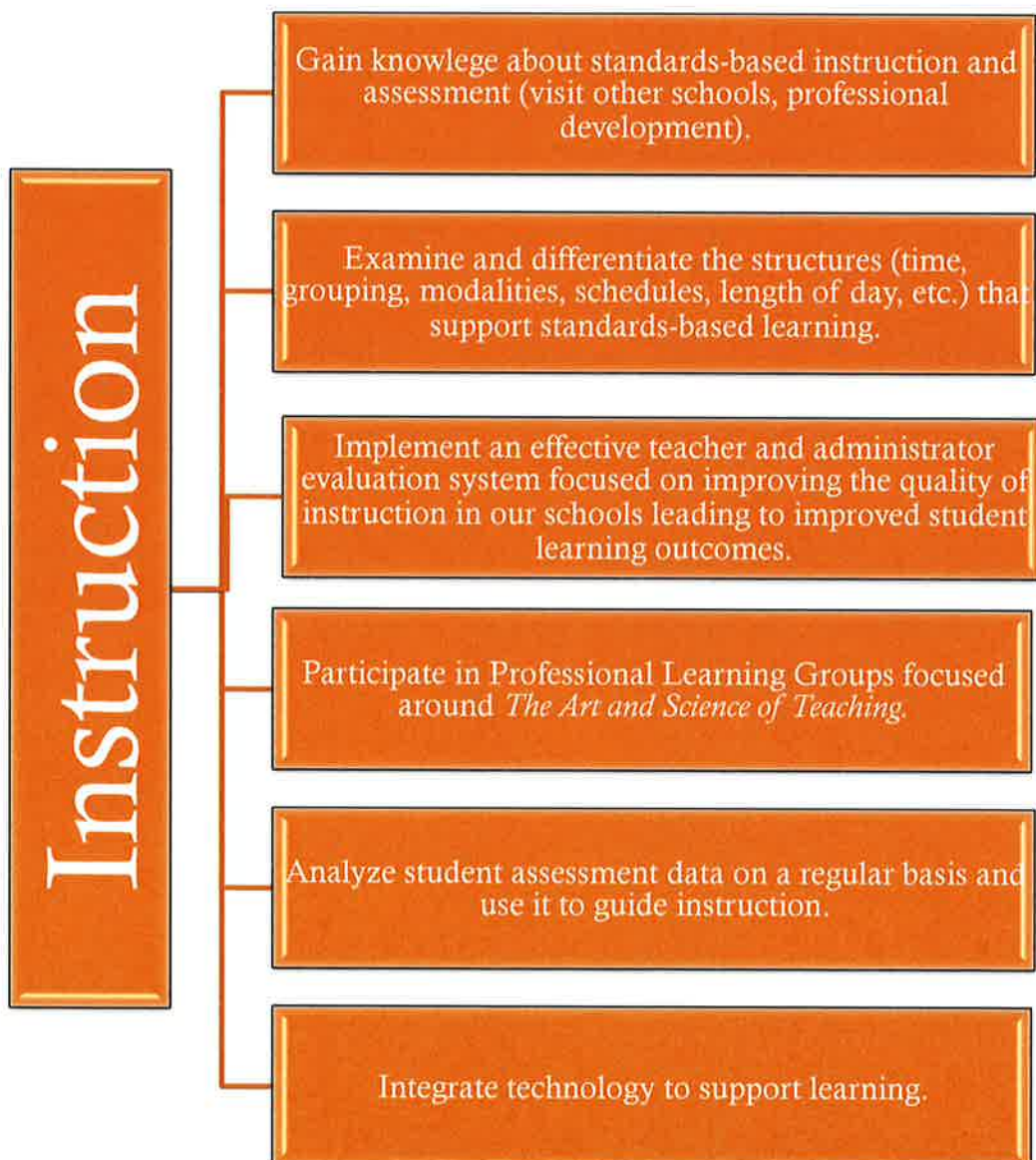
Use standards-based curriculum that provides all students with the time and opportunity to develop the necessary skills and knowledge.





## Innovative Education: Instruction

Use research based instruction that provides opportunities for all students to learn in different ways, settings, and time frames.

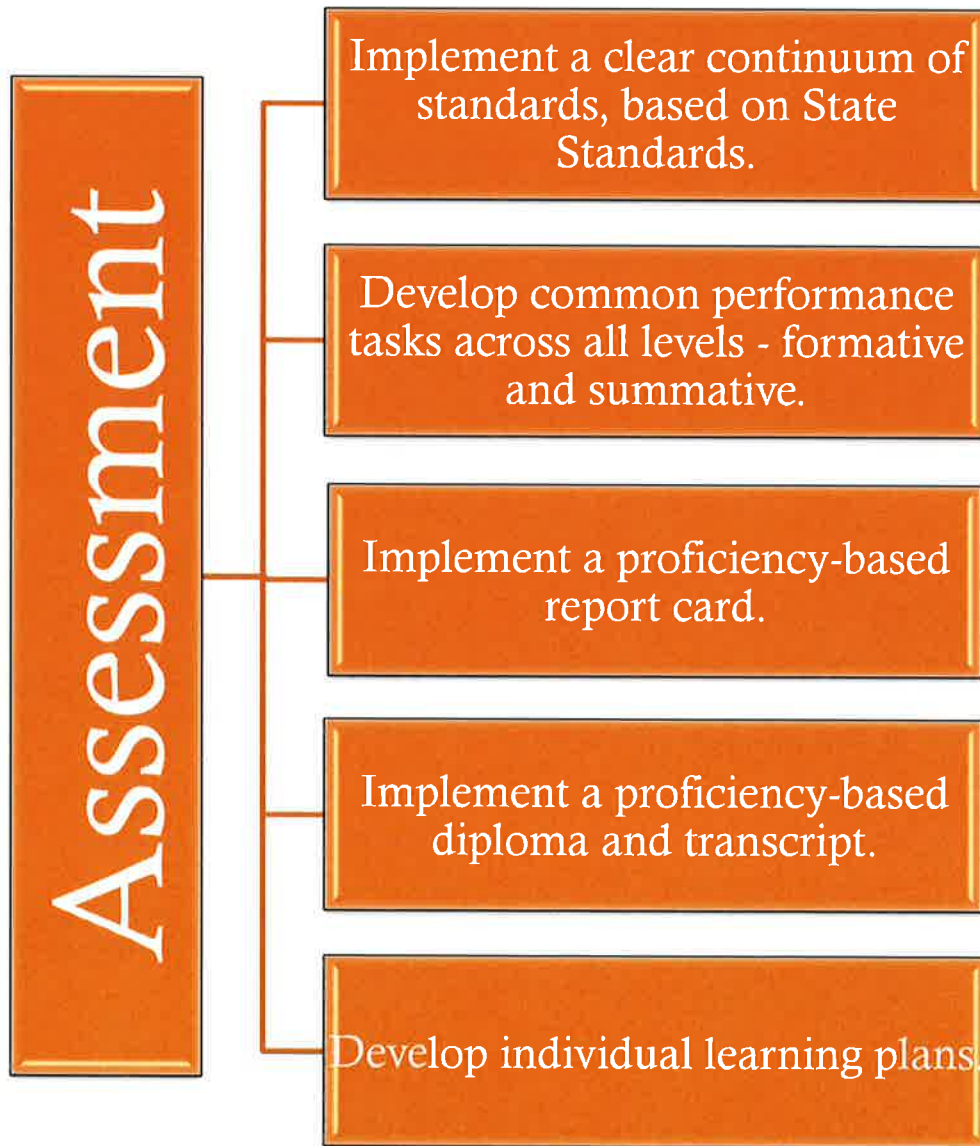






## Innovative Education: Assessment

Using multiple measures of data to inform teaching and learning.

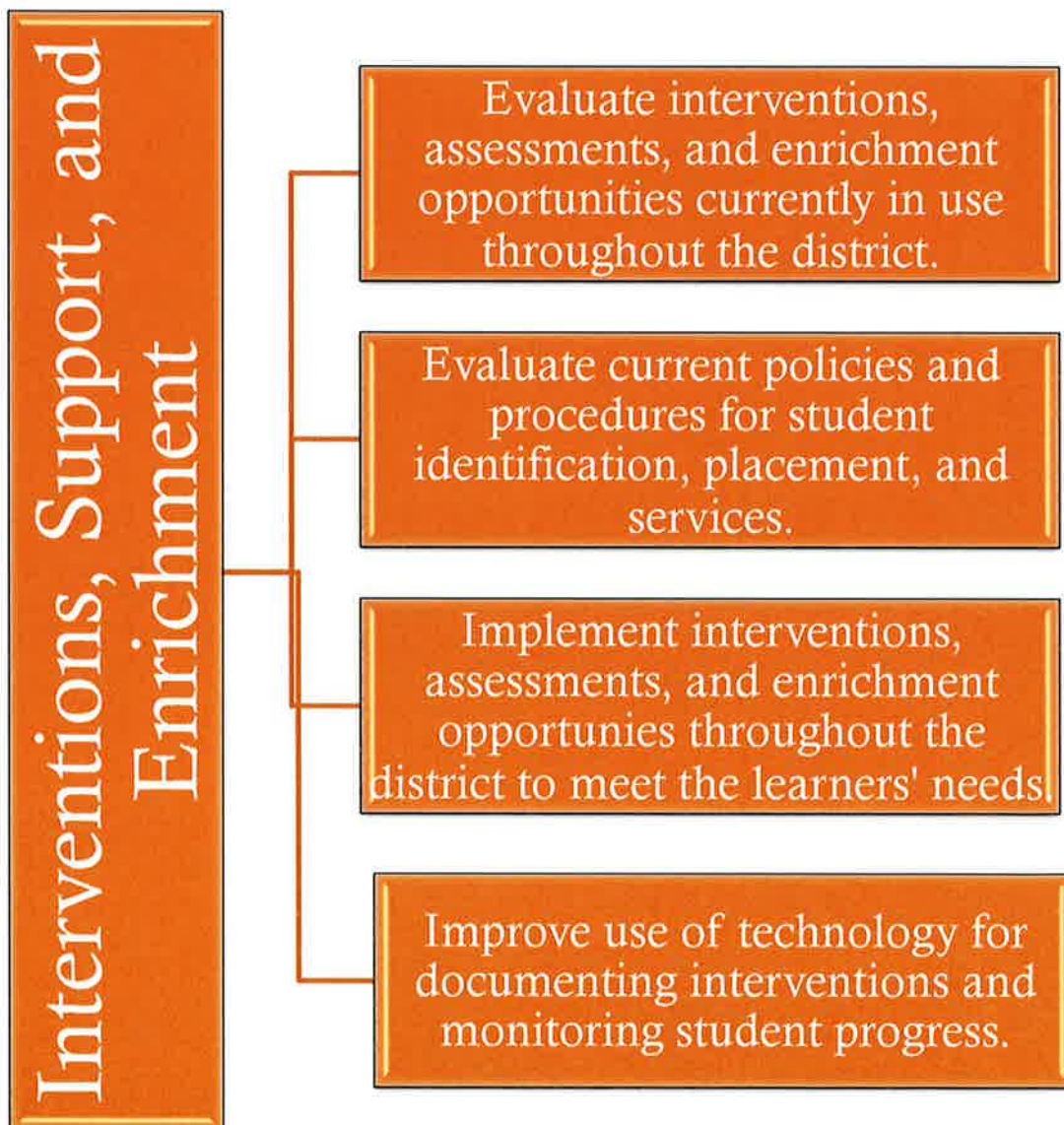




## Innovative Education:

### Interventions, Support, and Enrichment

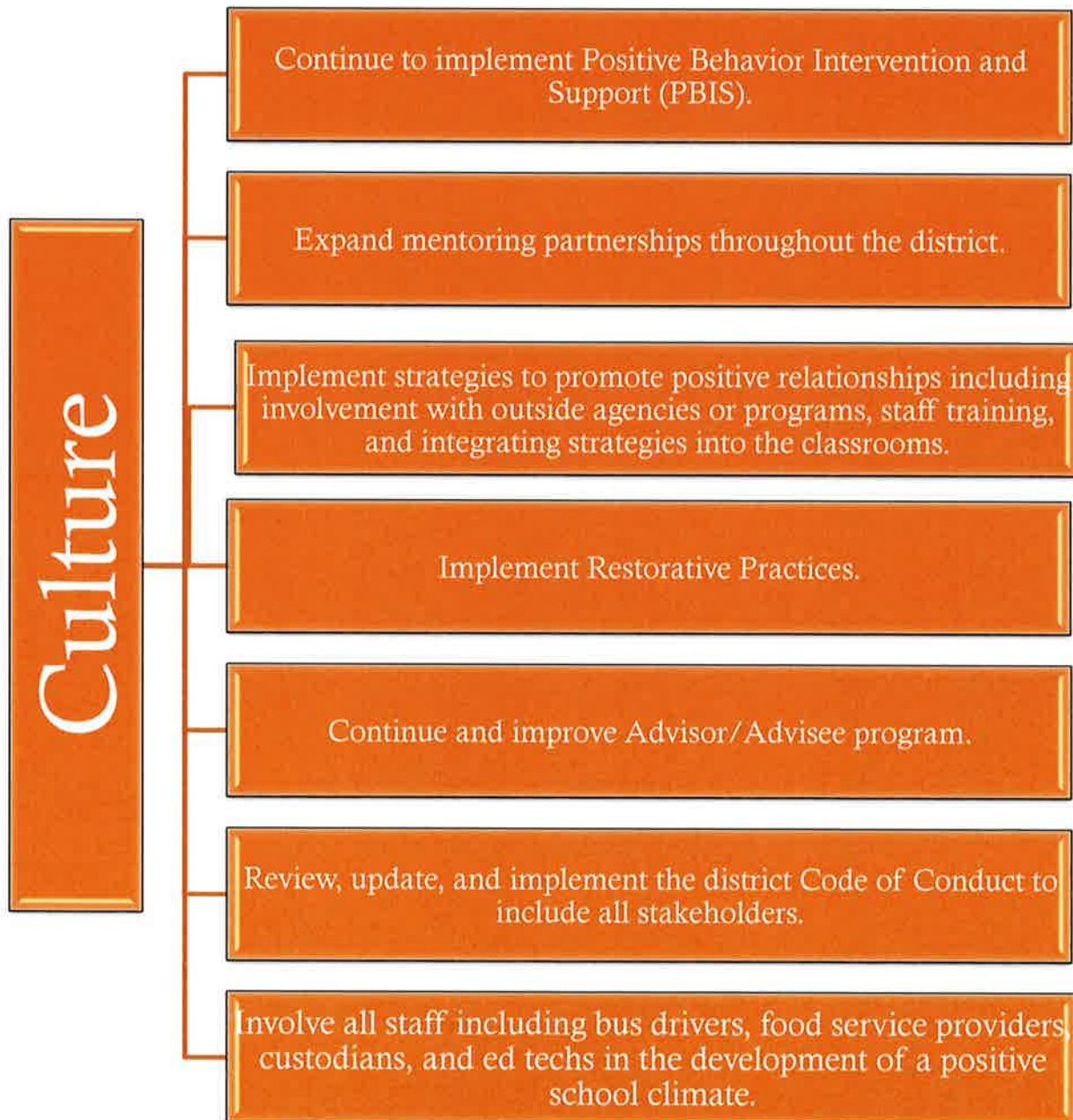
Provide targeted and appropriate instruction to meet the needs of all learners.





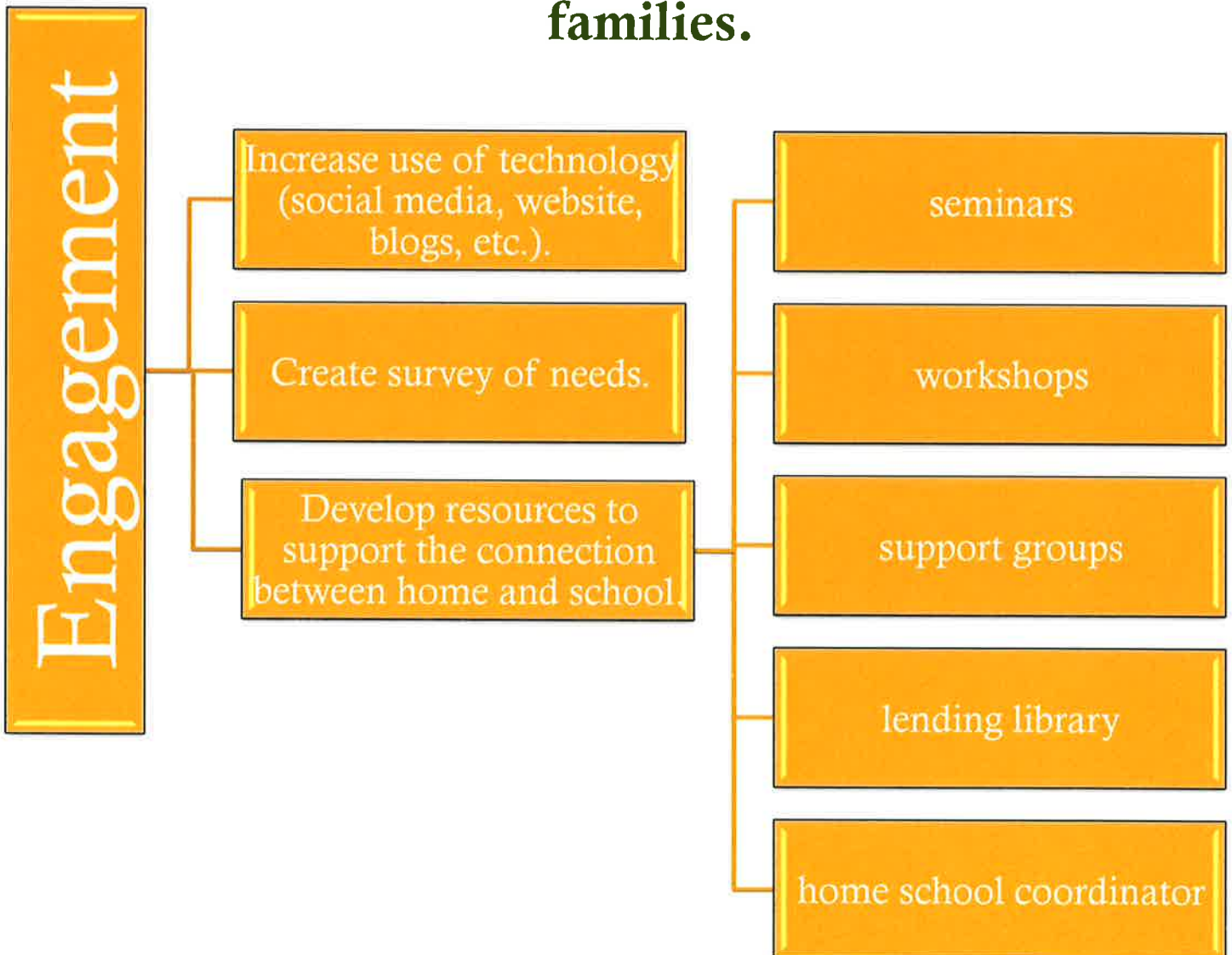
## Innovative Education: Culture

Promote and maintain a positive and safe learning environment.



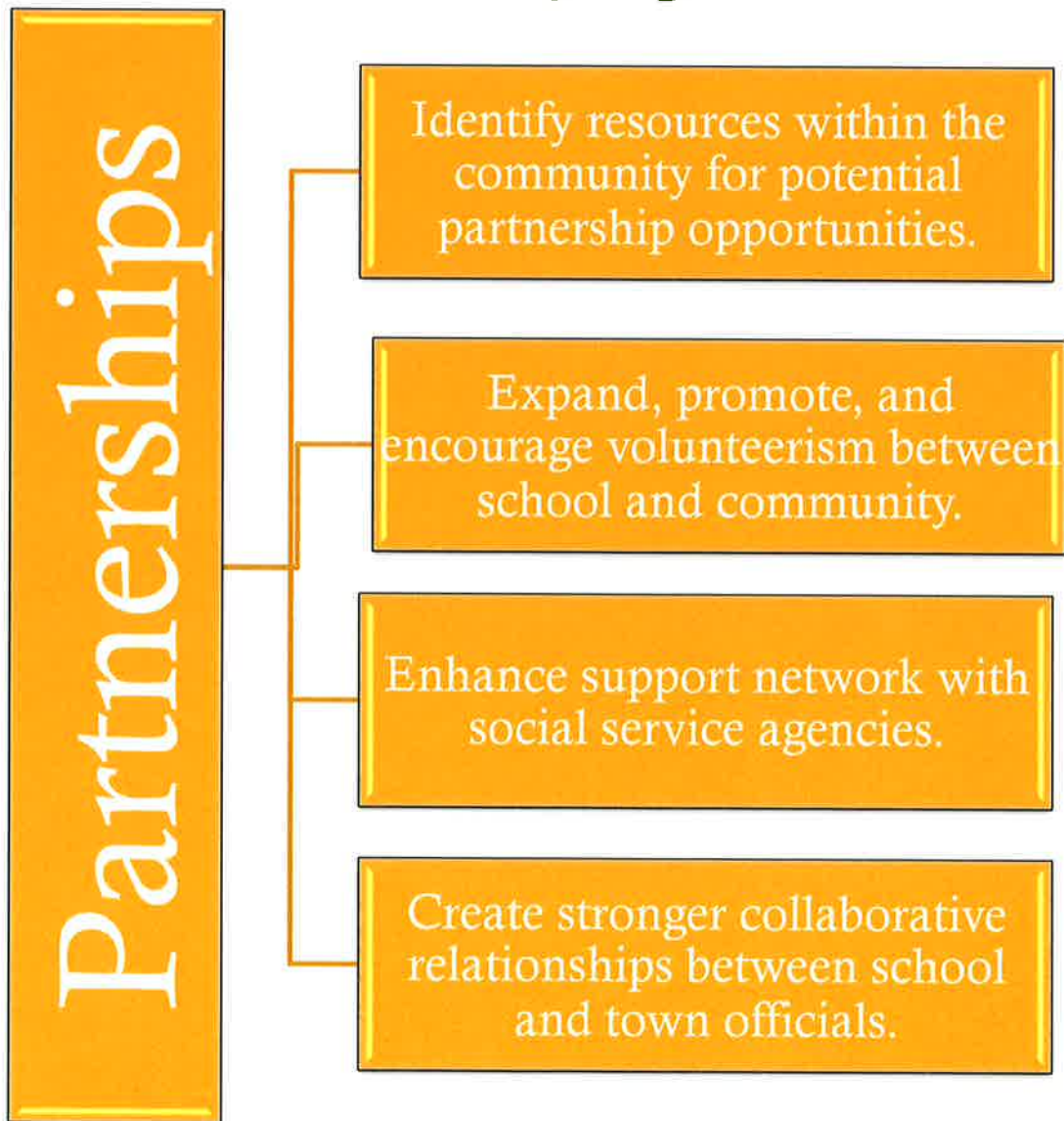


## Community Collaboration: Expand engagement between the schools and families.





**Community Collaboration:  
Create and enhance partnerships between school  
and community organizations.**





**Community Collaboration:  
Enhance communication between schools and  
the community.**



# Planning Team

## Special Thanks

On behalf of RSU 29, we would like to thank all of the participants who have contributed their time over the last year helping support us through this change initiative. We especially would like to recognize all past and current members of our Planning Team and our Change Partner, Judy Enright, for facilitating this work.



## Planning Team Members

Mike Hammer, Superintendent of Schools

Rae Bates, Curriculum Director

Marty Bouchard, Principal, Houlton Jr/Sr High School

Candace Crane, Principal, Houlton Elementary School

Tiffany Karnes, Principal, Houlton Southside School



Cindy Peterson, Teaching Principal Wellington

Jan Neureuther, Special Education Director

Fredrick Grant, RSU 29 School Board Member

Rachel Carmichael, Teacher Houlton Southside School

Anne Kreyssig, Teacher Houlton Jr/Sr High School



Al Morris, Director, Carleton Project

Heather Johnson, RSU 29 Parent

Noah Holmes, Student

Tessa McCormick, Student

Judith Enright, Facilitator





# RSU 29

Preparing Learners for a Changing World

