

WCHS PROM INFO

WCHS PROM: MISCELLANEOUS

- ARRIVAL TIME IS FROM 6:30 P.M. UNTIL 7:30 P.M. NO ONE WILL BE ADMITTED AFTER 7:30 P.M. WITHOUT PRIOR APPROVAL. AFTER 6:30 P.M. STUDENTS MAY NOT LEAVE WITHOUT SIGNING OUT, AND THEY MAY NOT RETURN TO CAMPUS.
- USE OR POSSESSION OF CONTROLLED SUBSTANCES OF ANY KIND, INCLUDING DRUGS, ALCOHOL AND VAPING ARE NOT PERMITTED BEFORE OR DURING SCHOOL AND BANQUET/PROM TIME. ANY VIOLATION OF THIS RULE WILL RESULT IN SUSPENSION AND RECOMMENDATION FOR EXPULSION FROM WINFIELD CITY SCHOOLS.
- THIS IS A SCHOOL – SPONSORED FUNCTION AND IS GOVERNED BY ALL THE RULES AND POLICIES OF THE WINFIELD CITY BOARD OF EDUCATION AND WINFIELD CITY HIGH SCHOOL. ONLY WINFIELD JUNIORS/SENIORS MAY ATTEND. ALL OTHERS MUST LEAVE BY 7:00 P.M. ALL DRESS AND GROOMING HAS BEEN EXPLAINED. FOR PARTICIPATION PURPOSES, ALL MUST ABIDE BY THESE POLICIES.
- ALL JUNIOR/SENIOR CLASS MEMBERS MUST HAVE PAID THEIR SHARE AS AGREED UPON BY THE JUNIOR SPONSORS BEFORE BEING ELIGIBLE TO ATTEND.
- ALL STUDENTS MUST BE IN GOOD STANDING AND IN ATTENDANCE THE DAY OF THE PROM TO BE ELIGIBLE TO ATTEND.
- A SIGN OUT BOOK WILL BE PROVIDED AT THE FRONT DOOR FOR ALL WHO ARE READY TO LEAVE. NO ONE IS REQUIRED TO STAY FOR ANY MINIMUM PERIOD OF TIME, BUT WHEN LEAVING THE BANQUET/PROM, EACH PERSON MUST PERSONALLY SIGN OUT AND MAY NOT RETURN TO THE CAMPUS.

WCHS PROM

DRESS CODE
INFORMATION

WHY DO WE HAVE A DRESS CODE?

WCHS STAFF AND ADMINISTRATION
WANT YOU TO MAKE GOOD CHOICES.

WE ARE NOT TRYING TO INHIBIT YOUR STYLE.

PROM SHOULD BE FUN, BUT WE WANT
EVERYONE TO BE COMFORTABLE AND SAFE.

WITH MODESTY IN MIND, THE FOLLOWING DRESS CODE GUIDELINES WILL BE ENFORCED AT THE WCHS PROM.

*DRESSES WILL BE REVIEWED ON A CASE BY CASE BASIS.

*BRING PICTURE (PREFERABLY OF YOU IN THE DRESS) TO MRS. COLE IN THE OFFICE FOR APPROVAL.

GENTLEMEN

1. MUST BE FULL LENGTH/ANKLE SLACKS. NO SHORTS.

2. MUST HAVE A COLLARED DRESS SHIRT,
BUTTONED UP.
NO CHEST SHOWING.

3. MUST HAVE A SUIT/TUX JACKET.

4. MUST HAVE A TIE.

*REMEMBER THIS IS A FORMAL EVENT.

APPROVED





NOT
APPROVED

LADIES

APPROVED

DRESSES MAY NOT BE CUT BELOW THE BUST LINE. THE BUST CONTINUES AROUND YOUR SIDES DIRECTLY UNDER THE ARMPIT. WITH ARMS DOWN AT YOUR SIDE, IF FLESH TOUCHES FLESH BELOW THE BUST, THE DRESS IS NOT ALLOWED.

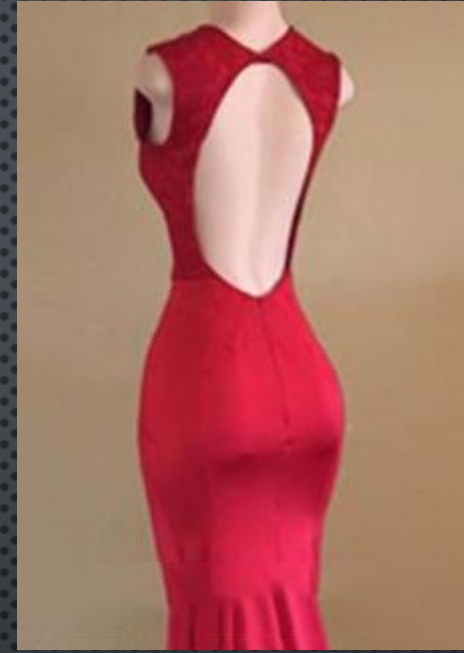




NOT APPROVED

Approved

DRESSES MAY BE
BACKLESS AS
LONG AS THEY
ARE NOT CUT
BELOW THE NAVAL
OR WAISTLINE.





NOT APPROVED

APPROVED

TWO-PIECE DRESSES OR DRESSES WITH SIDES OUT MUST FOLLOW THE BACKLESS RULE AND CANNOT COME BELOW THE NAVAL. ON A TWO-PIECE, THE GAP SHOULD NOT BE ANY WIDER THAN 2 INCHES.



NOT APPROVED



Approved

DRESSES MAY
NOT HAVE A
SLIT THAT
EXCEEDS
MID-THIGH.
THIS IS
FINGERTIP
LENGTH.





NOT APPROVED

APPROVED

LENGTH OF SKIRT
CANNOT BE MORE THAN 3
INCHES ABOVE THE
KNEECAP (CREDIT CARD
LENGTH) THIS ALSO
APPLIES TO DRESSES THAT
HAVE SHORTS EITHER
OUT OR UNDER A SHEER
SHIRT.





NOT
APPROVED

NOT APPROVED

SHEER PORTIONS OF
DRESSES (SKIRTS, BACK,
MIDRIFF) SHOULD MEET
OTHER REQUIREMENTS
LISTED.



PINNING & FABRIC INSERTS & UNDERGARMENTS

- NO PINNING WILL BE ALLOWED AS AN ALTERATION FOR A DRESS IF WITHOUT THE PINS THE DRESS DOES NOT MEET DRESS CODE.
- FABRIC INSERTS MUST BE SEWN, NOT PINNED, ON THE DRESS IF WITHOUT THE INSERTS THE DRESS DOES NOT MEET DRESS CODE.
- NO COVER-UPS (COATS, SHAWLS, SWEATERS) WILL BE ALLOWED OVER DRESSES THAT DON'T MEET DRESS CODE.
- THE PROPER UNDERGARMENTS MUST BE WORN.

PICTURES

- PICTURES TAKEN AT THE DANCE MUST ALSO MEET DRESS CODE. YOU MAY NOT WEAR AN UNACCEPTABLE DRESS TO TAKE PICTURES AND THEN CHANGE INTO ONE THAT DOES MEET CODE FOR THE DANCE.

- WHILE WE WILL BE REASONABLE IN OUR INTERPRETATION OF THESE GUIDELINES, WE WANT YOU TO KNOW THAT YOU WILL NOT BE ALLOWED INTO THE DANCE IF YOU ARE NOT MEETING DRESS CODE.
- MOST IMPORTANTLY, THE DRESS CODE DOES NOT LIMIT YOUR ABILITY TO SHOW YOUR STYLE AND UNIQUENESS.