

Fayette County School Corporation

Return to School Plan

UPDATED

for the 2020-2021 School year



Personal Protective Equipment (PPE) and Practicing Prevention

Face coverings (mask) (Updated 7/24/2020)

Per Governor Holcomb starting July 27th students in grades 3-12 will be required to wear a face mask while at school except during the following circumstances:

- If a school classroom can be configured such that all students and instructors are at least 3 to 6 feet apart
- During outside recess where proper social distancing measures are enforced
- When deemed necessary by a school official for instructional purposes

An Individual discretion will be given for students with an IEP or with 504 learning plans will be continued

Regardless of age all students are required to wear a face covering while on a school bus.

It is recommended that all students ages 2 and above where a face covering whenever social distancing cannot be observed.

Gloves

- Gloves will be required for Food and Nutrition Services (FNS) workers at all times and other staff whenever cleaning or sanitizing an item or surface
- Gloves are encouraged to be worn by staff members when they handle money and other personal items
- School nursing staff and/or staff members who monitor and check students or staff displaying symptoms of COVID-19 should wear gloves and masks when in close contact with these individuals

Gloves will be available for anyone concerned with the touching of papers, books, personal items, or money while employed by FCSC.

Hand sanitizer

- Hand soap and hand sanitizer, as approved for use to prevent the spread of COVID-19, will be available in bathrooms, classrooms, school buses, and frequently trafficked areas throughout the district
- Students will be permitted to carry and have their own hand sanitizer while on all FCSC campuses each day

<p>Contact Tracing</p> 	<p>Fundamental activities that involve working with a patient who has been diagnosed with an infectious disease to identify and provide support to people (contacts) who may have been infected through exposure to the patient. This process prevents further transmission of disease by separating people who have (or may have) an infectious disease from people who do not.</p>	<p>Hand Sanitizer</p> 	<p>Hand sanitizers should be approved for use in killing the COVID-19 virus and only used with staff and older children who can safely use hand sanitizer. Hand soap should be used for younger children.</p> <p>As a reminder, handwashing with soap and water for at least 20 seconds is always recommended.</p>	<p>Vulnerable Populations</p> 	<p>Elderly individuals and/or those with serious underlying health conditions, including high blood pressure, chronic lung disease, diabetes, asthma, and those whose immune system is compromised such by chemotherapy for cancer and other conditions requiring such therapy.</p>
---	--	--	--	--	---

Disclaimer:

****The information in this reopening plan is current as of July 2, 2020. As this is an ever-changing pandemic, FCSC will continue to work closely with the Fayette County Health Department and the Indiana Department of Education as they advise us. As we reopen school in August, there may be changes to our plan that relate specifically to additional safety measures. In turn, as we move through the school year, trends may allow us to adjust some of the guidelines provided in this reopening plan. As always, we will keep student and staff safety and well-being at the forefront of all decisions while working with local and state agencies during the 2020-21 school year.***

Important Information about Student Screening

- All FCSC parents should self-check their children for any COVID-19 symptoms before sending them to school (see list below):
- Each day, it is recommended that teachers observe students as they enter their classrooms for symptoms (see list below):
 - The appearance of a fever, including the following symptoms observed: more tired than normal or without energy; complaints of muscle pain, headache; exhibiting chills or repeated shaking
 - Cough (usually non-productive and dry)
 - Shortness of breath or difficulty breathing
 - Sore throat
 - Loss of taste or smell
 - Fever of 100.4 or greater (without any usage of any fever-reducing medication)

****Per the Indiana State Department of Health, a person will typically have multiple symptoms during screening.***

Academics

- Physical interaction for partner or group work will be limited. Social distancing is to be practiced during all learning activities
- An academic baseline will be established at the start of the school year to determine where students are and what skills need to be reviewed from previous year or course
- For students and parents not comfortable returning or if a student is considered medically fragile, they will be able to enroll in “My FCSC School Online” an online learning program provided by the Fayette County School Corporation. Parents need to complete necessary information stating this interest. More details will be provided by mid-July 2020

Attendance

- Attendance recognitions and award programs will not occur during the 2020-2021 school year
- Current attendance policies that penalize students for missing school, when COVID-19 related absences occur, will not be in effect for the fall of 2020 (supporting documentation must be provided for all COVID-19 related absences)
- When students are required to stay home for extended periods due to a COVID-19 absence, they will continue classroom requirements utilizing “My FCSC School Online”
- Schools will work to educate staff and families about when they/their children should stay home and when they can return to school. FCSC will work closely with our local health department throughout the year to support our students and families with guidance on absences and returning to school for COVID-19 related concerns/needs
- Schools will post signage throughout the building to help educate students about the symptoms of COVID-19 and preventive measures to keep themselves safe

Classroom

- Seating will be assigned and arranged so that all students practice social distancing guidelines during instructional periods
- All students will have their own technology device and their own classroom supplies which are not to be shared
- Lockers may not be assigned to middle school or high school for the 2020-2021 school year, but a final decision will be made in late July 2020 as a building-level decision
- PE/Locker rooms will be utilized but lockers will be assigned and limited to access by only the assigned student
- Floors throughout the buildings will be marked to help students adhere to proper social distancing guidelines when they are in common areas such as cafeteria, gym, and classrooms

Drill Guidance

- All safety procedures and protocols for drills will continue to be emphasized in order to prepare students for an actual emergency situation but with safety precautions
 - Drills will be announced so staff and students are aware of the drill
 - Drills will be “slowed down” so that staff and students can exist the building and maintain social distancing
 - If the location for a lockdown drill is impractical due to social distancing requirements, teachers and staff should emphasize and show students where they would go in the event of a lockdown or active shooter

Entering/Exiting the School Building

- Hand sanitizer will be available throughout each school building daily
- Staff will limit unnecessary congregations of students and staff
- Signage will be posted in each building educating staff and students on how to stop the spread of COVID-19, what the symptoms are, and how to practice good hygiene
- Hallways, high traffic areas, and door handles will be cleaned throughout the day
- All students will move down the hallways on their right side and are to maintain social distancing

Food Service/Food Items for Students

- Students will be expected to wash their hands before and after meals or snacks
- Students will not share any food items during the school day
- Food items may only be provided that are commercially prepared and/or individually wrapped (no homemade items are to be provided to students)
- No outside food deliveries from local restaurants will be allowed for at least the first semester of school.
- ***Details for our food service program operations are found in the appendix of this document***

Protecting Vulnerable/High Health-Risk Students and Staff

- We will have a point of contact with the Fayette County Health Department to provide guidance for students and staff
- Hand sanitizer will be available throughout the building in areas where students will visit
- All vulnerable/high health-risk staff and students are strongly encouraged to wear PPE at school when necessary
- Remote learning options will be available for vulnerable/high health-risk students and for students who are required to miss due to extended absences as a result of COVID-19 absences
- Early transition times will be made available for vulnerable/high health-risk students to travel to classes when hallways are not occupied by large groups
- Large gatherings and interactions will be limited or avoided whenever possible

Recess

- Elementary students will continue to have recess times made available
- Recess times will be staggered as much as possible to allow for social distancing
- Equipment will be sanitized throughout the day
- Hand sanitizer will be made available during recess times and students will wash their hands with soap and water upon returning to the building
- Contact games and activities will not be permitted during recess times until further notice

Social-Emotional Learning & Support

- Ensure families are aware of community resources and how to access mental health services by collaborating with mental health agencies to develop a resource guide for families
- All staff will have an understanding of childhood trauma and increased trauma that may have occurred during our time away. All staff will have an understanding of how to help students who may have experienced trauma
- Professional Development provided to ALL staff on childhood trauma that will include how to nurture students' mental health (words to avoid, allowing time for students to share feelings etc.). This will also include developing a plan on how staff can refer students for additional services, if needed

- Students will have access to in-house mental health support. Students will be able to meet with a Counselor or Social Worker, as needed. All Elementary students will receive Social Emotional Learning lessons, on a regular basis

Special Events

- Convocations will not be held until further notice
- Field trips will not be taken until further notice
- Classroom speakers and other family nights will not occur in the fall. We will re-evaluate for 2nd semester in the late fall
- School open houses for students and families will be scheduled at each building in small groups or individually. This will be a building-level decision communicated to families in July 2020

Transporting Students (Updated 7/23/2020)

Regardless of age, all students are required to wear a face covering while on a school bus.

FCSC will implement standard operating procedures on all school buses as follows:

- Hand sanitizer will be available for students and bus drivers
- Students will have assigned seating on buses, filling in every other row (when possible, students will be seated with family members)
- Once every other row is filled, the remaining empty rows will be utilized later in the route so that closer contact is limited
- The seat directly behind the bus driver will only be utilized on buses where children must use integrated safety seats/seat belts due to space constraints
- Buses will be cleaned and sanitized after each morning and afternoon route is completed. Buses will also be sanitized after all extracurricular trips
- Bus drivers will have the option to wear face masks or face shields
- Buses will unload one at a time to allow for staggered entry into the buildings

Visitors

- Visitors and parents will be limited to an “as needed” basis
- Visitors are asked to contact the school or department office to schedule an appointment for non-emergency situations
- Office areas will be arranged to allow space between the visitor and office personnel
- The office counter areas and door handles will be sanitized throughout the day
- Visitor access to buildings will be limited during the school day when students are present

Water Fountains

- Water fountains will not be available for use during the 2020-2021 school year
- Bottle refilling stations are being purchased so that they will be available in each building
- Students are encouraged to bring water bottles from home and coordinate filling of these in the classroom or for extracurricular activities

When a child, staff member, or visitor becomes sick at school

- Each school will designate and clearly identify an area of isolation to separate anyone who exhibits COVID-like symptoms

- If multiple symptoms are presented, the school health office will immediately contact the parent or guardian of the student (or FCSC staff member if presenting with symptoms) and request that he/she be tested for COVID-19 immediately
- If the child or staff member is tested, he/she should notify the school office of the test and await results before a decision is made on returning to school
- If the test is negative, the student or staff member may return to school immediately
- If a test is not administered to determine the presence of COVID-19, that person should be isolated for 10 days
- If a test is positive, the health department and/or medical provider will provide guidance; however, there should be a 10-day period of quarantine from the onset of symptoms for the affected student or staff member.
- During this time of quarantine, absences will be excused provided there is documentation regarding the positive case or pending test results for the affected person with the virus and for any students or staff members who are required to be quarantined
- If a student or staff member exhibits multiple symptoms while at school and is asked to be tested, or if the school is made aware of any positive test results for students or staff, the FCSC Superintendent/Designee and the FCSC School Health Coordinator must be contacted immediately to allow for timely notification with the Fayette County Health Department, staff, and families of a confirmed case
- If there is a positive case, the school building where the student or staff is located will immediately close off areas used by the sick person, as identified through “contact tracing” to allow for thorough cleaning/sanitizing before reopening for use
- The Superintendent/Designee and Fayette County Health Department will work together to determine if and how long the school should be closed, if necessary, and when the staff or student can safely return to school when a case is confirmed by the health department as a result of positive cases located within that school building
- Anyone who has taken a COVID-19 test should remain home until receiving the official results of the test. It typically takes no more than 48 hours. School should be notified after the student or staff member receives test results
- The Centers for Disease Control (“CDC”) has released guidance for school administrators and community leaders to utilize when making decisions regarding the transmission of COVID-19 in their communities. Below is the School-specific Decision Tree for schools to consider when a building has a confirmed case of COVID-19 within its population, as well as considerations for various levels of community spread. The CDC Guidance found on page 7 will be utilized to determine next steps when a student or staff member in an FCSC facility has a confirmed positive case of COVID-19

Effective 1/25/2021 per the guidance of the Fayette County Health Department, FCSC will use the following guidelines when a student is identified in contact tracing.

When are quarantines NO longer required:

During the school day or while riding an FCSC bus-

- If students or staff are identified through contact tracing as a close-contact and were exposed to someone up to 48 hours prior to displaying symptoms or while that person was exhibiting symptoms who subsequently tested positive for COVID-19.
- The positive-tested student or staff member will follow the 10-day isolation requirements which begins when symptoms began.
- For students or staff who are identified as close-contacts, they should wear masks at school whenever not socially-distanced by at least six feet and continue to be diligent in hand sanitizing and avoiding personal contact with others for 10 days following their last known contact with the COVID-19 positive person.
- Close-contacts in the classroom or on buses are not excluded from extracurricular activities, but should take extra precautions with wearing masks, social distancing, and hand sanitizing as much as possible during the 10-day period.

When are quarantines STILL required:

Outside of the school day activities-

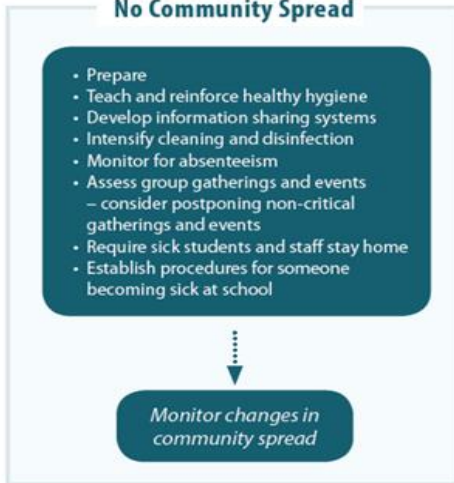
- If students or staff are identified through contact tracing as a close-contact and were exposed to someone up to 48 hours prior to displaying symptoms or while that person was exhibiting symptoms during any extracurricular event, including practices or contests, the quarantine protocol will still be required for those students or staff impacted. Protocol for identifying close-contacts within these extracurricular activities will take place and any students or staff identified as close-contacts during these events will be required to follow the 10-day quarantine period.
- If students are exposed to a person who tests positive for COVID-19 during non-school related activities, such as through family or friend close-contact, those students should be quarantined for 10 days after the last known close-contact with the positive person. FCSC will require quarantines for any close-contacts that took place outside of school, including church, local sports and events separate from FCSC, and family or social gatherings.

School Decision Tree

All Schools Regardless of Community Spread



No Community Spread



Minimal to Moderate OR Substantial Community Spread



Appendix 1

Fayette County School Corporation Extra-Curricular Event Guidelines Winter Activities- 2020-21				
VENUE:	County Color Code	County Color Code	County Color Code	County Color Code
Spartan Bowl	Essential Personnel and Parents/Guardians 2 tickets/participant per school	25% capacity of venue 1300 spectators 4 tickets/participant--home 2 tickets/participant--visitor Remaining tickets will go to season ticket holders first, then tickets left will sell to public	50% capacity of venue 2600 spectators 4 tickets/participant home 4 tickets/participant visitor Remaining tickets will go to season ticket holders first, then tickets left will sell to public	50% capacity of venue 2600 spectators 4 tickets/participant home 4 tickets/participant visitor Remaining tickets will go to season ticket holders first, then tickets left will sell to public
CHS Gym	Essential Personnel and Parents/Guardians 2 tickets/participant per school	25% capacity of venue 200 spectators 4 tickets/participant--home 2 tickets/participant--visitor Remaining tickets will go to season ticket holders first, then tickets left will sell to public	50% capacity of venue 400 spectators Will make tickets available at gate	50% capacity of venue 400 spectators Will make tickets available at gate
CHS Pool	Essential Personnel and Parents/Guardians 2 tickets/participant--home No visitor tickets to be sold	25% capacity of venue 94 spectators 3 tickets/participant No visitor tickets to be sold	50% capacity of venue 189 spectators 4 tickets/participant--home 2 tickets/participant--visitor	50% capacity of venue 189 spectators 4 tickets/participant--home 2 tickets/participant--visitor
Fieldhouse	Essential Personnel and Parents/Guardians 2 tickets/participant/school	25% capacity of venue 101 spectators 4 tickets/participant--home 2 tickets/participant--visitor	50% capacity of venue 202 spectators 4 tickets/participant--home Remaining tickets sold at gate	50% capacity of venue 202 spectators 4 tickets/participant--home Remaining tickets sold at gate
Spartan Arena	Essential Personnel and Parents/Guardians 2 tickets/participant/school	25% capacity of venue 150 spectators 2 tickets/participant/school	50% capacity of venue 300 spectators 4 tickets/participant--home 2 tickets/participant--visitor	50% capacity of venue 300 spectators 4 tickets/participant--home 2 tickets/participant--visitor
CHS and CMS Auditoriums	Essential Personnel and Parents/Guardians 2 tickets/participant	25% capacity of venue 2 tickets/participant	50% capacity of venue 4 tickets/participant	50% capacity of venue 4 tickets/participant
	Masks are to be worn at all times Social Distancing required...sit with families No student sections...students must sit with families			Mask to be worn at all times Social Distancing Required Student Section will be allowed

Tickets/Vouchers are to be picked up in the CHS Office prior to the event to be presented at the door of each event. This voucher will allow you to purchase a ticket for admission or use your all-sport ticket for admission. This will be true for all venues. If capacity exceeds expected ticket sales, vouchers will not be issued for those events.

Connersville Spartans COVID-19 Athletics Plan

- All athletes will be required to fill out the waiver form provided by the IHSAA
- All physicals from 2019-2020 will be honored but if getting a new physical is possible that would be preferred
- Enhanced cleaning of facilities will be performed daily by custodial staff
- All weight, fitness, or athletic equipment will be sanitized between uses by custodial staff and coaches

Pre-workout Screening

- All coaches and students should be screened for signs/symptoms of COVID-19 prior to any workout
- Temperatures will be taken if a coach or student exhibits one or more of the COVID-19 symptoms on the monitoring checklist
- It is recommended that anyone who is considered vulnerable or high risk not oversee or participate in any workouts

During activities daily

- Athletes will be reminded to not touch their face, eyes or mouth with unclean hands
- Players/coaches must stay on their designated courts or fields
- Workouts will consist primarily of skill development with as little contact as possible

After activities and leaving facility

- Wash and sanitize hands upon arrival and prior to leaving the facility
- Monitor health and report any symptoms after activity to coaches
- Wash and sanitize all gear and apparel used during the activity
- Properly dispose of personal drinking cups or bottles
- Players should leave after workout and not congregate in groups in parking lot or common areas

Athletic Trainers

- Will help assess our athletes for COVID-19 Symptoms
- Will assist in taking temperatures
- Will clean the training area and equipment daily
- Will help provide guidance to athletes and athletic department on advice from Reid Health

Weight Room Usage

- Students utilizing the weight room can perform lifts that require a spotter, but must make sure social distancing is still happening as much as possible

Limitations and Facilities

- Locker rooms and meeting rooms may be used at 50% capacity, but with competitive events 50% capacity can be exceeded
- Students are encouraged to come dressed to workouts...locker rooms will be available, but students will not be able to leave personal items in the locker room. It is still recommended that students shower immediately after returning home from practice
- Must have own water bottle, preferably disposable ones; if a reusable water bottle, it must be taken home and washed daily and should have the athlete's name clearly written on it
- Restrooms will be available and students need to wash or sanitize hands before and after participation

- There should be no shared equipment (towels, clothing, shoes, or other sports equipment). Students should bring their own towels
- If backpacks or bags are brought to practice, they need to be set separate from others' belongings
- Students must adhere to social distancing requirements at all times
- No celebratory actions that require physical touching

Competitive Events

- Spectators will be permitted at events; however, social distancing is requested
- Spectator capacity will follow the Color-Coded Weekly plan found in Appendix 1 (page 9 of this document)
- Concession stands will serve prepackaged items only until further notice
- Restrooms will have enhanced cleaning during sporting events
- Ticket sellers and takers at events will wear gloves when handling passes, tickets, or money
- Water fountains will not be available for use at any event
- Athletes and coaches will not share water bottles or water systems until further notice
- Athletic seating on the competition floor will be spread out to allow for social-distancing

FCSC Food Service Program Guidelines

2020-21 School Year

The food service program in the Fayette County School Corporation is operated by Chartwells School Dining Services. As a national company operating food service programs in districts throughout Indiana, they bring a strong background and level of expertise in maintaining safe operations for schools. Below are the additional steps that Chartwells is planning to implement to help support and provide safe preparation and distributing of school meals:

Social Distancing:

- Banners encouraging social distancing / sanitation will be installed in each building
- Guidance stickers for lining up at serving lines, standing in line, and at cashier stands will be utilized at each building
- Tables and/or seating will be removed in cafeterias, as needed, to allow for social distancing during meals. This will be determined as the capacity limit is set by FCSC administration
- Plexi-glass will be installed at all cashier stands

Cafeteria / Kitchen Safety & Sanitation:

- All Chartwell's Staff protocols - temperature taken, logged, and each member asked a series health questions while reporting for shifts daily
- No self- service with foods or condiments:
 - o All "extra" fruits and veggie sides will be cupped/wrapped
 - o Pizza in secondary schools will be boxed/plated
 - o No condiment pumps- packets will be available
 - o No cutlery dispensers- pre-packaged cutlery will be available
 - o Milk to be distributed at register or next to milk coolers to minimize student contact
- "Contactless" Point of Sale- Students at each elementary will still be entered by saying their name; CMS and CHS will purchase scanners for student ID cards to be scanned at lunch for each student/staff member
- Wiping down high-volume areas multiple times each day, including serving areas, dining tables, etc.
- All employees will wear masks & gloves during all prep & service of food
- Handwashing & glove changing procedures/policies will be increased and monitored
- There will be no sharing tables, or the Food Rescue Program operated until further notice
- More hand sanitizer dispensers will be placed in each cafeteria

What Can You Do?

Parents

- ✓ Talk to your student about hand washing and good hygiene. Those messages should be consistently reinforced at school and at home.
- ✓ If your student displays symptoms of COVID-19 (see below) or has a fever, please do not send your child to school. When exhibiting symptoms, your student should stay at home except to seek medical attention.
- ✓ Hand sanitizer will be available at school, subject to availability by suppliers, but we encourage parents to provide their students with a small container of hand sanitizer for use at school.
- ✓ If you would like for your child to wear a mask at any time on buses or during the school day, please provide those masks and reinforce your expectations with regards to when and where the mask is to be worn. FCSC staff cannot monitor these expectations, except in very limited situations as required for medically fragile students or when outlined in an IEP.

Staff

- ✓ Develop a habit of washing your hands several times each day.
- ✓ If you experience symptoms of COVID-19 and/or a fever, please do not report to work. When experiencing these symptoms, notify your supervisor and stay at home except to seek medical attention.
- ✓ Hand sanitizer will be available at your workplace, subject to availability by suppliers, but we encourage you to bring your own small container of hand sanitizer.
- ✓ If you need PPE for your FCSC-required job duties, please notify your supervisor in advance of these.

Students

- ✓ Make it a habit to wash your hands several times per day at home or school.
- ✓ If you notice that a soap dispenser is empty or nearly empty, please notify your teacher or other adult.
- ✓ Hand sanitizer will be available at school, but we encourage you to bring your own small container.
- ✓ If your parents/guardians direct you to wear face masks they send with you to school, please follow their directives with when and where you wear your masks appropriately.

***People with COVID-19 have had a wide range of symptoms reported – ranging from mild symptoms to severe illness. Symptoms may appear **2-14 days after exposure to the virus**. People with multiple symptoms may have COVID-19:*

- *Fever or chills*
- *Cough*
- *Shortness of breath or difficulty breathing*
- *Fatigue*
- *Muscle or body aches*
- *Headache*
- *New loss of taste or smell*
- *Sore throat*
- *Congestion or runny nose*
- *Nausea, vomiting, diarrhea*

*This list will be updated as new information is provided by the Department of Health or CDC.