

# COVID-19 PREVENTION

## Youth Art Poster & Slogan Contest

### Contest Rules

One entry per youth per contest

#### **Art Poster**

- 8 1/2 x 11 in. paper
- Artwork must be original
- Depict a theme of "COVID-19 Prevention"
- Students can use crayons, watercolors, poster paint, colored pencils, or magic markers
- Do not use reflective materials, i.e. glitter, gold stars, cotton balls, straw, magazine pictures of fabric glued to the art
- Posters submitted will not be returned

#### **Slogan**

- Must be original
- Must have "Wabaunsee", "Wabaunsee County" or "WabCo" in it



### Themes should include:

- Washing Hands Often
- Avoiding Close Contact
- Covering Mouths & Noses with a Mask
- Covering Coughs & Sneezes
- Cleaning & Disinfecting
- Monitoring Health Daily

LETS "WASH AWAY" COVID-19  
IN WABAUNSEE COUNTY!



### Age Categories

- K—4 grades
- 5—8 grades
- 9—12 grades



### How do I enter?

#### **Posters - Put in the Extension Office drop box by December 4th**

-Write on the back of poster, in pencil, student's name, grade, school, parent's name, email and phone number.

#### **Slogans - Email submissions to wb@listserv.ksu.edu by December 4th**

- In the body of the email include the slogan, student's name, grade, school, parent's name, email and phone number.

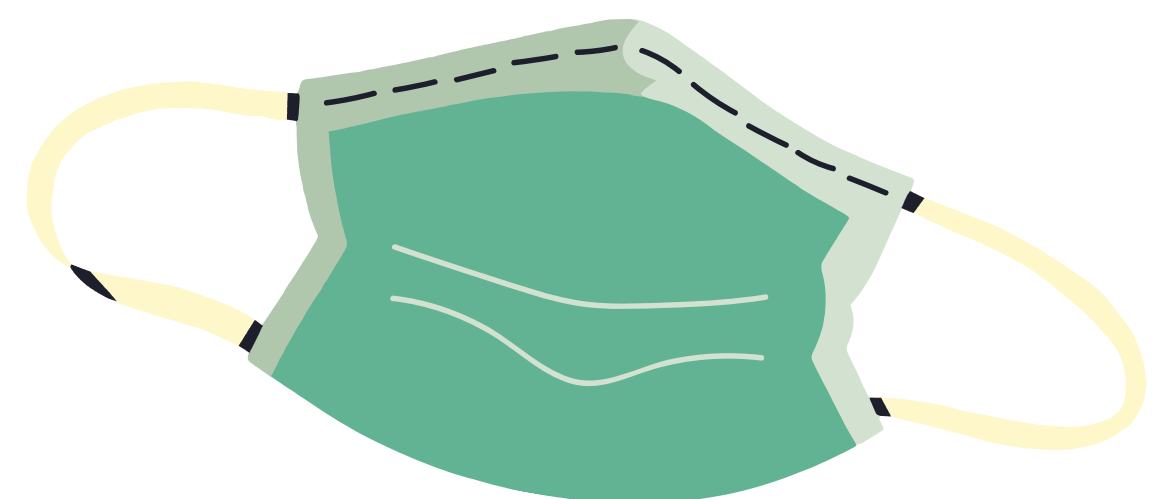
### Prizes

**-1st Place- \$50.00, 2nd Place- \$25.00**

-Winners will be announced on December 11th

-Prizes will be awarded for Posters & Slogans in each age category

\*\*Funded by SPARK funds provided by Wabaunsee County



Wabaunsee County

K-State Research and Extension is committed to making its services, activities and programs accessible to all participants. Reasonable accommodations for persons with disabilities may be requested by contacting Stephanie Melhus at 785-765-3821 or [smelhus@ksu.edu](mailto:smelhus@ksu.edu). Notify staff of accommodation needs as early as possible.  
Kansas State University Agricultural Experiment Station and Cooperative Extension Service  
K-State Research and Extension is an equal opportunity provider and employer.