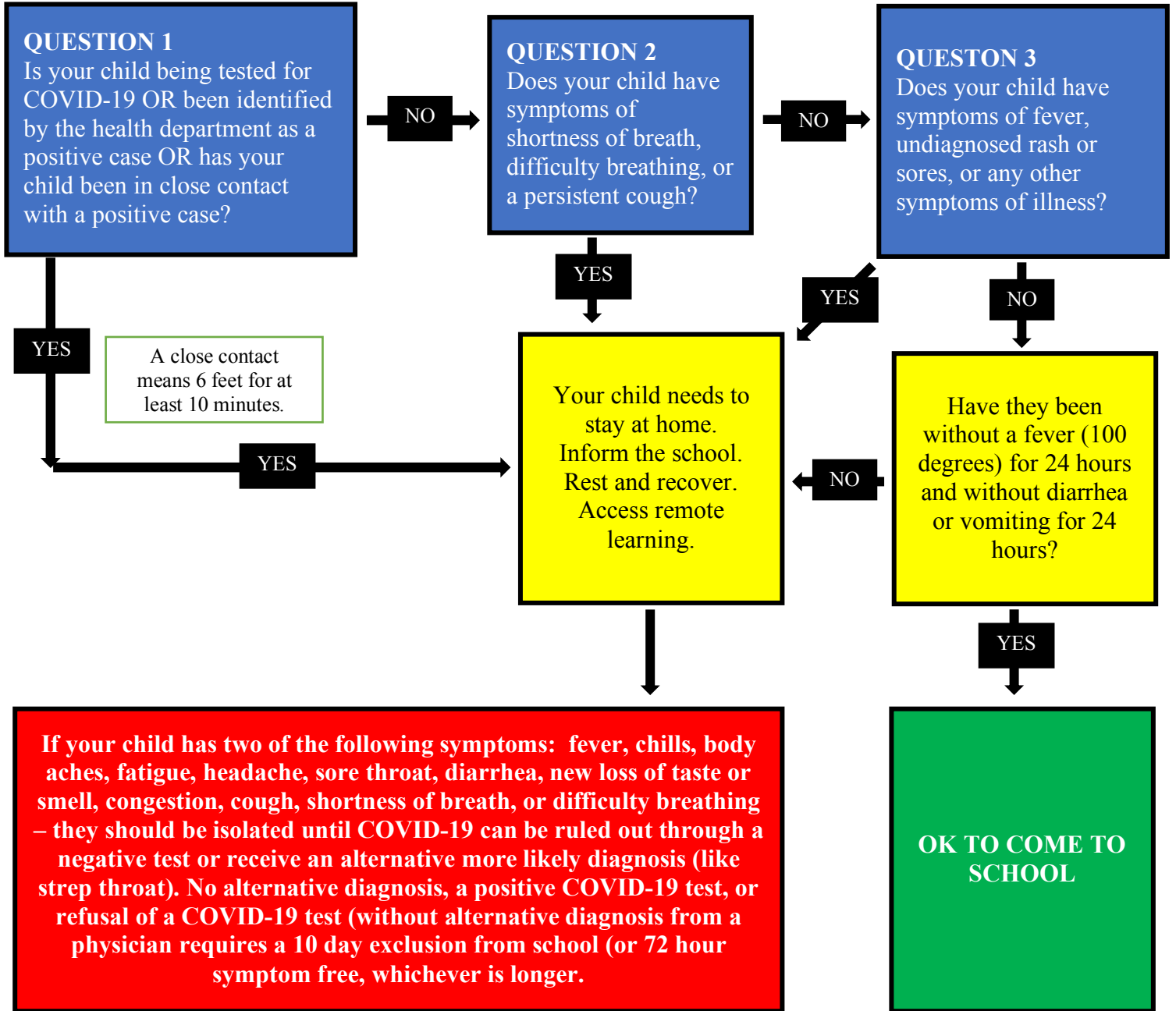


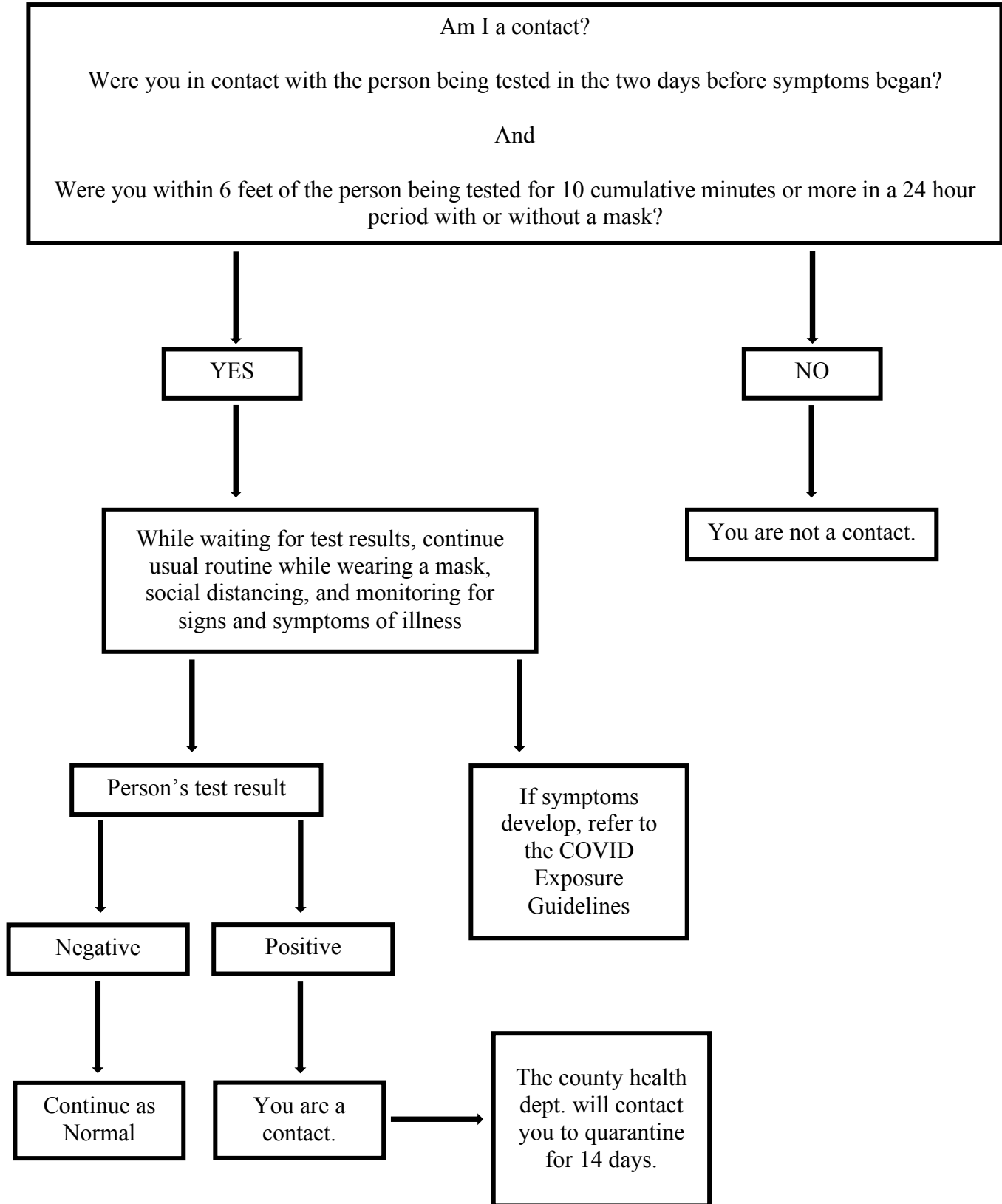
USD 460 SITUATIONAL FLOW CHARTS

**CAN MY CHILD GO TO SCHOOL TODAY?**  
Start with the 3 questions below.



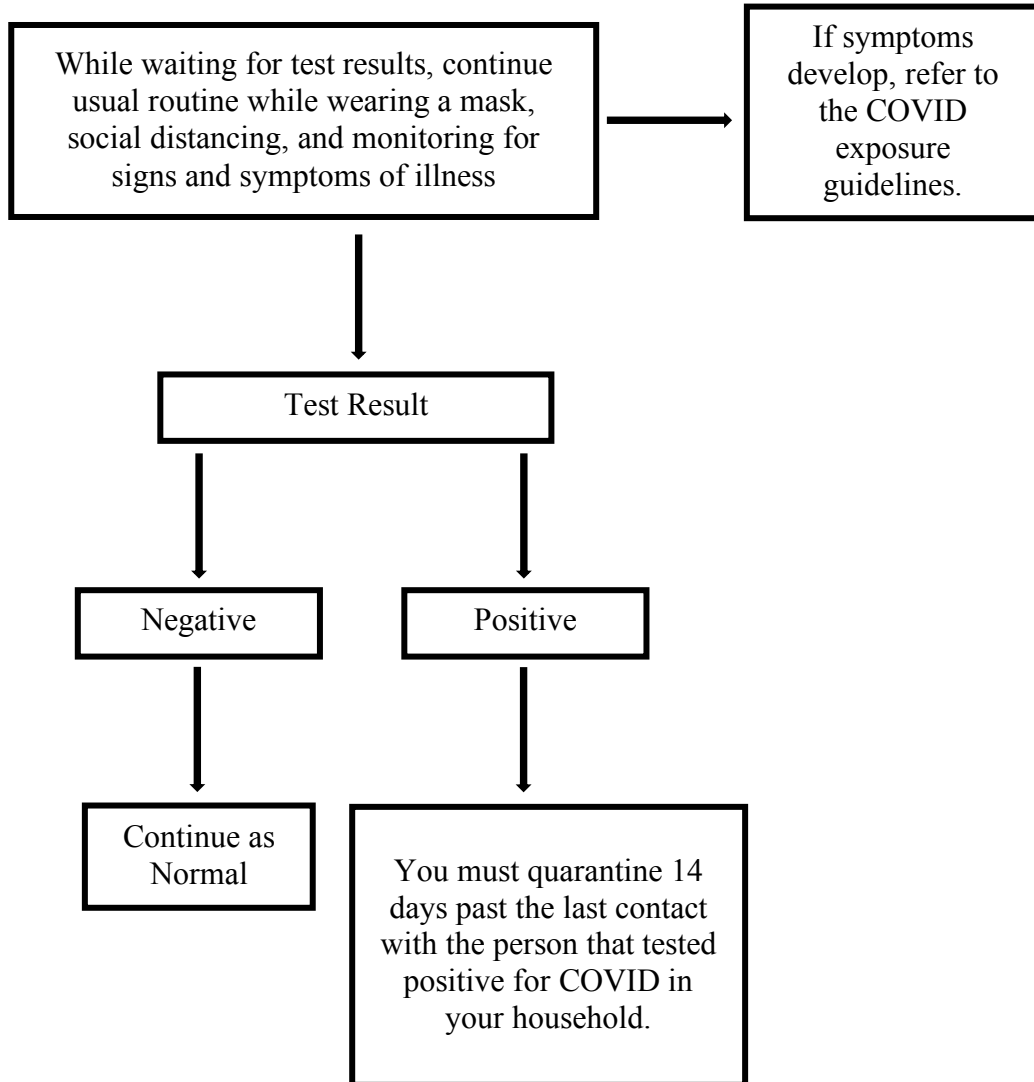
# USD 460 SITUATIONAL FLOW CHARTS

## A PERSON I HAVE BEEN AROUND IS GETTING TESTED FOR COVID



## USD 460 SITUATIONAL FLOW CHARTS

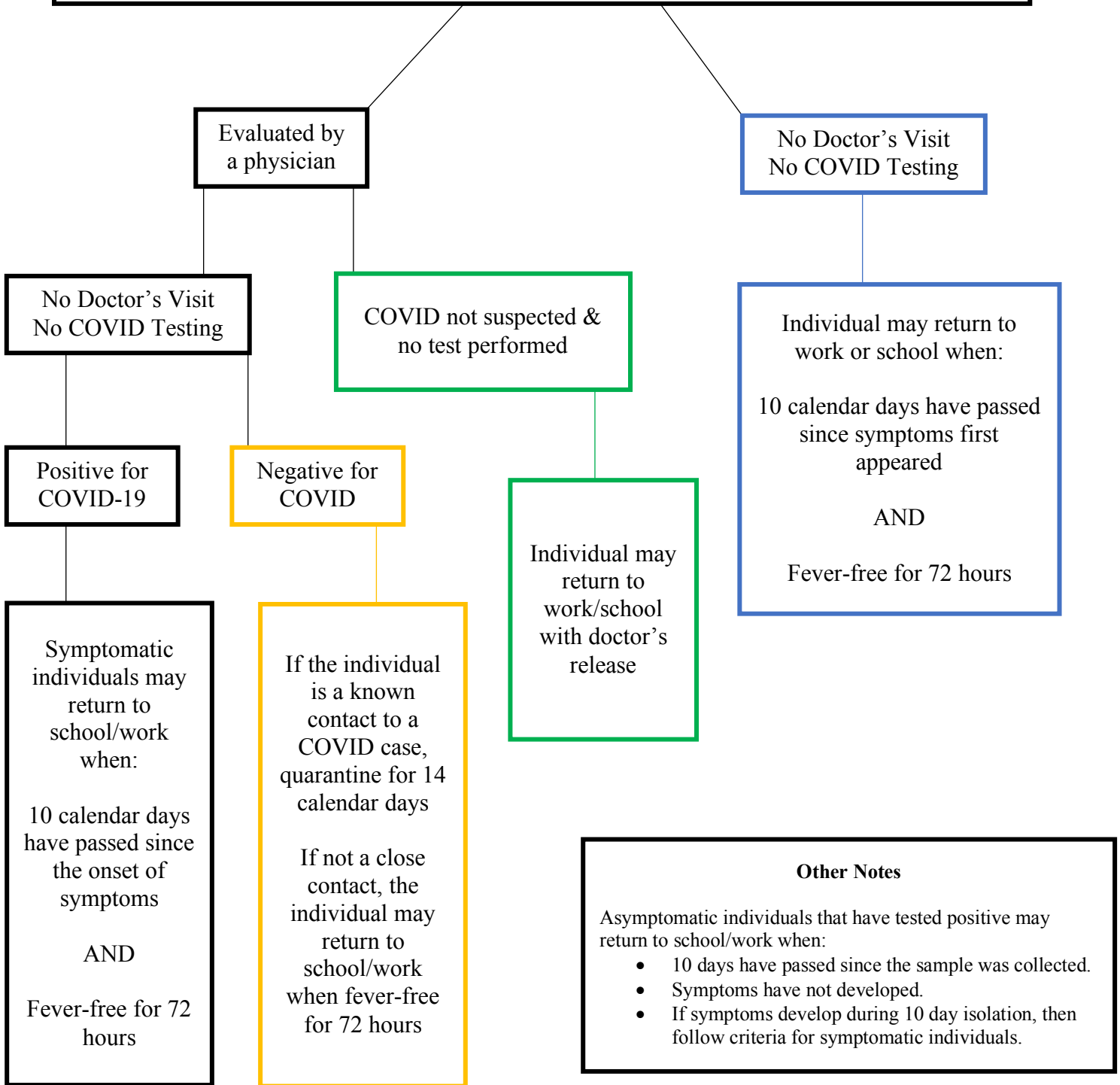
### A PERSON I LIVE WITH IS GETTING TESTED FOR COVID



## USD 460 SITUATIONAL FLOW CHARTS

**If a student or staff member is at school and presents at least two of the following symptoms, he or she will be sent home:**

Fever (100 degrees), Chills, Shivering, Muscle Pain, Malaise, Headache, Sore Throat, Lower Respiratory Illness (cough, shortness of breath), Loss of taste or smell, Congestion or runny nose, Nausea or vomiting, Diarrhea without an alternative or more likely diagnosis



# USD 460 SITUATIONAL FLOW CHARTS

## COVID EXPOSURE GUIDELINES

### **Student or staff member has COVID symptoms and goes for testing with no known exposure to a positive case.**

- Should isolate until no fever without fever reducing medication and feeling well for at least 72 hours or for 10 days whichever is longer.
- The testing site should tell them to isolate.
- The parent of the student should notify the school office or school nurse they are being tested.
- A staff member should notify their direct supervisor that they are being tested.
- USD 460 will not release the name of any individual being tested.
- The staff member who is being tested may give permission to their direct supervisor to notify potential close contacts about potential exposure.
- If a test comes back positive, the health department will notify contacts through contact tracing.
- The school should be prepared to identify potential contacts from the school to assist the health department.

### **Student/staff member has COVID symptoms, goes for testing, and has been a contact of a known case.**

- Should already be isolating - but if didn't...
- Should self-isolate until no fever without fever reducing medication and feeling well for at least 72 hours, or for 10 days whichever is longer.
- The testing site should tell them to isolate.
- Schools should close areas where exposed student/staff member participated for more than 10 minutes and tell potential contacts that the health department will be contacting them when they do the contact tracing.
- The area should remain closed until it has been thoroughly cleaned.

### **COVID positive student/staff who has NOT been in school or at work when signs and symptoms began**

- School notified after diagnosed
- Student/staff member has not been in school or at work at any point in the 2 days before signs and symptom onset
- 10 days isolation, minimum.
- Refer to the KSDE graphic below
- No extra cleaning requirements

### **COVID positive individual who has been in school or at work when signs and symptoms began**

- School notified after diagnosed
- Student/staff member had been in school or at work for more than 10 minutes at some point in the 2 days before signs and symptoms began
- 10 day isolation, minimum
- Refer to the KSDE graphic below
- Assist with contact tracing as needed
- No extra cleaning requirements



## USD 460 SITUATIONAL FLOW CHARTS

### RELEASING CASES & CONTACTS FROM ISOLATION & QUARANTINE

#### CASES

Must be isolated for a minimum of 10 days after onset and can be released when fever free and feeling well (without fever-reducing medication) for at least 72 hours. A lingering cough should not prevent a case from being released from isolation.

Examples:

- A case that is well on Day 2, without fever and feeling well for 72 hours, can be released on Day 10.
  - A case that is well on Day 6, without fever and feeling well for 72 hours, can be released on Day 10.
  - A case that is well on Day 14, without fever and feeling well for 72 hours, can be released on Day 17.
- 

#### HOUSEHOLD CONTACTS

Must be quarantined for 14 days after the case has been without fever and feeling well (because exposure is considered ongoing within the house.) If a household contact develops symptoms, they should be tested. This means that a household contact may need to remain at home longer than the initial case.

Examples:

- A case is well 3 days after onset, case released from isolation on Day 10, household must remain quarantined until Day 24.
  - A case is well 7 days after onset, case released from isolation on Day 10, household must remain quarantined until Day 24.
  - A case is well 14 days after onset, case released from isolation on Day 17, household must remain quarantined until Day 31.
- 

#### NON-HOUSEHOLD CONTACTS

Must be quarantined for 14 days from the date of last contact with the case.

