



2021-2022

PROGRAM GUIDE

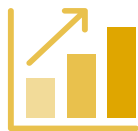


TABLE OF CONTENTS



04 Health & Human Services

- 05** Cosmetology
- 06** Culinary Arts
- 07** Early Childhood Education
- 08** Health Care Careers



09 Technology & Business

- 10** Computer Information Technology
- 11** Computer Programming
- 12** Innovation and Entrepreneurial Development



13 Manufacturing & Construction

- 14** Carpentry
- 15** Electrical Occupations
- 16** Precision Production Metals
- 17** Welding



18 Transportation & Logistics

- 19** Automotive Technology
- 20** Collision Repair and Refinishing
- 21** Diesel Technology
- 22** Logistics, Materials and Supply Chain Management



23 Frequently Asked Questions

Mercer County Career Center does not discriminate on the basis of age, race, color, national or ethnic origin, sex, or disability in employment or in the administration of any of its education programs and activities in accordance with applicable federal statutes and regulations. Inquiries should be directed to Title IX and Section 504 Coordinator, Aaron Kline, Mercer County Career Center, 776 Greenville Road, Mercer, Pennsylvania, 16137. 724-662-3000.

MERCER COUNTY CAREER CENTER OPPORTUNITIES

The Mercer County Career Center is located in Coolspring Township, Mercer, PA and offers 15 State approved programs offering real-world, hands-on learning. The Pennsylvania Skills Certificate recognizes students who are technically prepared for postsecondary education along with the knowledge to obtain high-skilled, high wage careers.

NOCTI (National Occupational Competency Testing Institute) is the largest provider of industry based credentials and partner industry certifications for Career and Technical Education (CTE) programs across the nation. Students who meet a 70% benchmark on the written portion of the NOCTI end-of-program assessment may also earn 3 credits at over 60 colleges and universities in Pennsylvania.

NCRC (National Career Readiness Certificate) is an evidence based credential which certifies essential skills for workplace success. Employers look for this when hiring because it is a good indicator of job performance.

NTHS (National Technical Honor Society) is an honor society for outstanding career and technical students. NTHS promotes strong values, responsibility, initiative, teamwork, and leadership while building a strong positive image.

SkillsUSA is a working partnership of students, teachers, and industry who work together to ensure America has a skilled workforce. SkillsUSA provides each student with the opportunity to excel.

**“OUR MISSION
IS TO EQUIP
STUDENTS WITH
MARKETABLE
SKILLS
THROUGH
EFFECTIVE
CAREER AND
TECHNICAL
EDUCATION”**



HEALTH & HUMAN SERVICES



COSMETOLOGY

Experience the world of beauty and fashion through the Cosmetology Program. Use cutting edge techniques to deliver precision haircuts, perms, chemical relaxing, braiding, manicures, facials and hair color treatments. Two days a week you will master your skills on customers in our student operated salon. Students successfully completing 1,250 hours of instruction are eligible for licensure from the Pennsylvania State Board of Cosmetology. This industry is booming right now and there are many opportunities available for entry level stylists.

COURSES OF STUDY

Chemical Textures and Hair Coloring
Chemistry, Anatomy and Physiology
Facials/Facial Makeup
Infection Control
Nail Structure/Technology
Professional Skills
Properties of Hair/Scalp and Hair Care
Salon Business

INDUSTRY CERTIFICATIONS

Students may be eligible to earn the following industry certifications:

- PA State Board of Cosmetology License
- Safety and Pollution Prevention Cosmetology (SP/2)

PENNSYLVANIA SKILLS CERTIFICATE/COLLEGE CREDIT

Students who successfully complete their program of study have the opportunity to earn college credits to post-secondary institutions where we have current articulation agreements. Students who meet a 70% benchmark on the written portion of the NOCTI end-of program assessment, may also earn 3 credits at over 60 colleges and universities in Pennsylvania.

A sample listing of post-secondary articulation agreements include: Butler County Community College, Laurel Technical Institute, Pittsburgh Technical College and Precision Manufacturing Institute. For more information about articulation agreements and college credit, please see the MCCC Guidance Counselor.



CAREERS

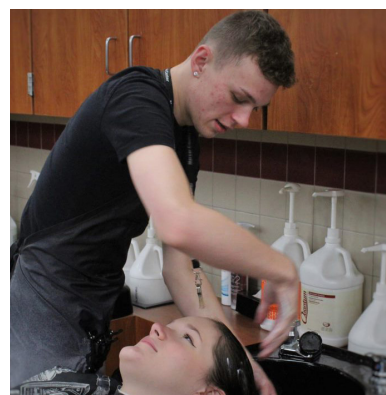
Cosmetologist
Salon Manager
Salon Sales Consultant
Salon/Spa Owner
Skin Care Specialist

MEDIAN INCOME

(2019 in PA)

Average Pay:
\$27,290.00

Hourly:
\$13.12



CULINARY ARTS

Are you the next Top Chef? Culinary Arts is designed to give students the basic skills needed to start a career in the restaurant and hospitality industry. You will create foods, from appetizers to desserts, in our professionally equipped kitchen and bakery. The curriculum and professional equipment is designed to develop skills in all areas of the food service industry.

COURSES OF STUDY

Baking
Cheese and Seasonings
Cooking and Recipes
Front-of-the-House and Dining Room Service
Meat, Poultry and Seafood
Nutrition and Menu Planning
Sanitation
Utensils, Cutting Tools and Equipment

INDUSTRY CERTIFICATIONS

Students may be eligible to earn the following industry certifications:

- Safety and Pollution Prevention Culinary (SP/2)
- ServSafe

PENNSYLVANIA SKILLS CERTIFICATE/COLLEGE CREDIT

Students who successfully complete their program of study have the opportunity to earn college credits to post-secondary institutions where we have current articulation agreements. Students who meet a 70% benchmark on the written portion of the NOCTI end-of program assessment, may also earn 3 credits at over 60 colleges and universities in Pennsylvania.

A sample listing of post-secondary articulation agreements include: Butler County Community College, Laurel Technical Institute, Pittsburgh Technical College and Precision Manufacturing Institute. For more information about articulation agreements and college credit, please see the MCCC Guidance Counselor.



CAREERS

Chef and Restaurant
Cooks

Food Service
Managers

Bakers

First Line Supervisors

MEDIAN INCOME

(2019 in PA)

Average Pay:
\$51,530.00

Hourly:
\$24.78



EARLY CHILDHOOD EDUCATION

Learn the skills needed to work with young children, through working in a fully operational preschool. Obtain Pediatric CPR and First Aid Certification. Earn hours toward a Child Development Associate (CDA) Certification.

This program will prepare students for post-secondary schooling in the education field, or to enter the workforce as a preschool teacher. Articulation agreements provide college credits for students earning at least a B.

COURSES OF STUDY

Child Development
Literacy and Play
Learning Activities
Program Development and Curriculum
Food and Nutrition
Children's Safety and Health
Professionalism

INDUSTRY CERTIFICATIONS

Students may be eligible to earn the following industry certifications:

- Better Kid Care (BKC)
- Child Development Associate PA (CDA) – Ready
- Mandated Reporter; Pediatric First Aid, CPR, and AED

PENNSYLVANIA SKILLS CERTIFICATE/COLLEGE CREDIT

Students who successfully complete their program of study have the opportunity to earn college credits to post-secondary institutions where we have current articulation agreements. Students who meet a 70% benchmark on the written portion of the NOCTI end-of program assessment, may also earn 3 credits at over 60 colleges and universities in Pennsylvania.

A sample listing of post-secondary articulation agreements include: Butler County Community College, Laurel Technical Institute, Pittsburgh Technical College and Precision Manufacturing Institute. For more information about articulation agreements and college credit, please see the MCCC Guidance Counselor.



CAREERS

Childcare Provider

Preschool Teacher

Teacher's Aide

MEDIAN INCOME

(2019 in PA)

Average Pay:
\$30,520.00

Hourly:
\$14.67



HEALTH CARE CAREERS

The U.S. Bureau of Labor Statistics projects that Healthcare will be among the fastest-growing industries in our economy. The Health Care Careers program is designed to allow students to gain a preparatory understanding of the healthcare environment through career exploration and classroom instruction. Program curriculum includes but is not limited to Foundations of Healthcare, Medical Terminology, Anatomy and Physiology and Occupational Skills. Clinical experience and Job shadowing is also an integral part of the program. Completion of the program allows for an informed post-secondary career choice or entry level employment in the healthcare field.

COURSES OF STUDY

Anatomy, Physiology, Pathophysiology
Basic Health Care Concepts (Communication, Safety, Infection Control, Transferring patients, Medical Ethics and Legal Concepts)
Emergency Care (First Aid and CPR)
Growth and Development
Job Shadow Hours/Clinical Experience
Medical Terminology

INDUSTRY CERTIFICATIONS

Students may be eligible to earn the following industry certifications:

- AMCA-Clinical Medical Assistant Certification
- American Heart Association Health Care Provider (Basic Life Support) CPR with AED/First Aid/Pediatric First Aid
- OSHA-10 hour Healthcare
- PA Department of Human Services Personal Care Home Direct Care Staff Person Training
- PA Nurse Aid Registry

PENNSYLVANIA SKILLS CERTIFICATE/COLLEGE CREDIT

Students who successfully complete their program of study have the opportunity to earn college credits to post-secondary institutions where we have current articulation agreements. Students who meet a 70% benchmark on the written portion of the NOCTI end-of program assessment, may also earn 3 credits at over 60 colleges and universities in Pennsylvania.

A sample listing of post-secondary articulation agreements include: Butler County Community College, Laurel Technical Institute, Pittsburgh Technical College and Precision Manufacturing Institute. For more information about articulation agreements and college credit, please see the MCCC Guidance Counselor.



CAREERS

Home Health Aide

Medical Assistant

Nurse Aide

Physical Therapy Aide

MEDIAN INCOME

(2019 in PA)

Average Pay:
\$29,650.00

Hourly:
\$14.25



TECHNOLOGY & BUSINESS



COMPUTER INFORMATION TECHNOLOGY

Interested in Information Technology? By enrolling in this program you will have the opportunity to learn fundamental and advanced concepts in designing and maintaining computer networks. Students will gain hands-on skills in computer hardware and maintenance, operating systems and software, network technologies and devices, as well as security fundamentals. The demand for careers within this field are growing fast, and the skills learned in this program are all essential for any entry level IT career. Obtaining these skills can give you the opportunity to achieve a career as a Desktop Support Specialist, Help Desk Support Technician, IT Support Specialist, IT Systems Administrator, or Network Engineer.

COURSES OF STUDY

Computer Hardware and Maintenance
Design, Implementation & Management of Linked Systems
IT Essentials
Networking
Operating Systems and Software
Security
Technical Skills required to support Networks & Network users

INDUSTRY CERTIFICATIONS

Students may be eligible to earn the following industry certifications:

- CompTIA A+
- CompTIA Network+
- Ethical Hacker Pro
- Network Pro
- PC Pro
- Security Pro
- Server Pro

PENNSYLVANIA SKILLS CERTIFICATE/COLLEGE CREDIT

Students who successfully complete their program of study have the opportunity to earn college credits to post-secondary institutions where we have current articulation agreements. Students who meet a 70% benchmark on the written portion of the NOCTI end-of program assessment, may also earn 3 credits at over 60 colleges and universities in Pennsylvania.

A sample listing of post-secondary articulation agreements include: Butler County Community College, Laurel Technical Institute, Pittsburgh Technical College and Precision Manufacturing Institute. For more information about articulation agreements and college credit, please see the MCCC Guidance Counselor.



CAREERS

Computer Support Specialist

Information Security Analyst

Network Administrator

Network Architect

Web Developer

MEDIAN INCOME

(2019 in PA)

Average Pay:
\$71,121.00

Hourly:
\$34.00



COMPUTER PROGRAMMING

The Computer Programming course focuses on the general writing and implementation of generic and customized programs to drive operating systems and that generally prepares individuals to apply the methods and procedures of software design and programming to software installation and maintenance. Includes instruction in software design, low- and high-level languages and program writing; program customization and linking; prototype testing; troubleshooting; and related aspects of operating systems and networks.

COURSES OF STUDY

Data Types and Expressions
Designing Functions
Graphics and Image Processing
Software Development Process

INDUSTRY CERTIFICATIONS

Students may be eligible to earn the following industry certifications:

- Introduction to Programming Using Python
- PCEP-Certified Entry-Level Python Programmer

PENNSYLVANIA SKILLS CERTIFICATE/COLLEGE CREDIT

Students who successfully complete their program of study have the opportunity to earn college credits to post-secondary institutions where we have current articulation agreements. Students who meet a 70% benchmark on the written portion of the NOCTI end-of program assessment, may also earn 3 credits at over 60 colleges and universities in Pennsylvania.

A sample listing of post-secondary articulation agreements include: Butler County Community College, Laurel Technical Institute, Pittsburgh Technical College and Precision Manufacturing Institute. For more information about articulation agreements and college credit, please see the MCCC Guidance Counselor.



CAREERS

Application Developers

Computer Programmers

Software Developers

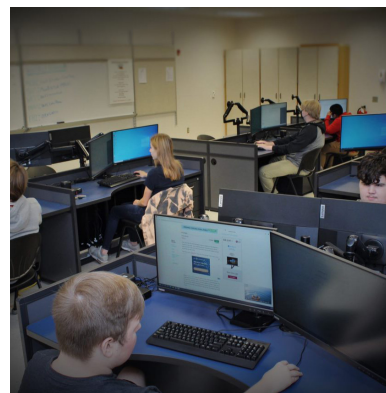
Web & Game Developers

MEDIAN INCOME

(2019 in PA)

Average Pay:
\$107,510.00

Hourly:
\$51.69



INNOVATION & ENTREPRENEURIAL DEVELOPMENT

Learn how to use common business software applications and maintain a business's image. Show your innovation and creativity by using state-of-the-art graphic technology including the vinyl printer. Create graphics on t-shirts, design marketing materials, and create amazing colors and textures using this high quality equipment. Brand images on unique materials using a laser beam with our laser engraver. Use online design and business simulations both in the classroom and virtually. Put your classroom knowledge to work while running the school store and an ecommerce store where you will sell items fabricated within the school. Work with local companies to create new ideas, designs and products. Throughout this program students will start and market a business and visit innovative companies throughout Mercer County.

COURSES OF STUDY

Advertising and Promotion
Business Plan
Communication
Economics
Entrepreneurship
Management
Marketing, Selling, and Visual Merchandising
Retail Math
Technology in Retail

INDUSTRY CERTIFICATIONS

Students may be eligible to earn the following industry certifications:

- ASK Certification
- CareerSafe
- Microsoft Specialist

PENNSYLVANIA SKILLS CERTIFICATE/COLLEGE CREDIT

Students who successfully complete their program of study have the opportunity to earn college credits to post-secondary institutions where we have current articulation agreements. Students who meet a 70% benchmark on the written portion of the NOCTI end-of program assessment, may also earn 3 credits at over 60 colleges and universities in Pennsylvania.

A sample listing of post-secondary articulation agreements include: Butler County Community College, Laurel Technical Institute, Pittsburgh Technical College and Precision Manufacturing Institute. For more information about articulation agreements and college credit, please see the MCCC Guidance Counselor.



CAREERS

Accounting Assistant

Business
Management

Business Owner

Marketing Specialist

Retail Manager

Sales Representative

MEDIAN INCOME

(2019 in PA)

Average Pay:
\$57,495.00

Hourly:
\$27.00



MANUFACTURING & CONSTRUCTION



CARPENTRY

Earn your PA Builder Association Certificate in the Carpentry program. Become prepared to obtain entry-level positions in building construction trades, apprenticeships in trade unions or pursue enrolling in postsecondary institutions for degrees in construction, sales, or management. The program's curriculum enables students to develop a knowledge base through classroom theory lessons and acquire technical skills by applying learned knowledge in hands-on shop experiences.

COURSES OF STUDY

Hand and Power Tools
Blueprint Reading
Framing
Interior and Exterior Finish
Construction Materials

INDUSTRY CERTIFICATIONS

Students may be eligible to earn the following industry certifications:

- OSHA-10 Hard Construction Training
- PA Builders Association

PENNSYLVANIA SKILLS CERTIFICATE/COLLEGE CREDIT

Students who successfully complete their program of study have the opportunity to earn college credits to post-secondary institutions where we have current articulation agreements. Students who meet a 70% benchmark on the written portion of the NOCTI end-of program assessment, may also earn 3 credits at over 60 colleges and universities in Pennsylvania.

A sample listing of post-secondary articulation agreements include: Butler County Community College, Laurel Technical Institute, Pittsburgh Technical College and Precision Manufacturing Institute. For more information about articulation agreements and college credit, please see the MCCC Guidance Counselor.



CAREERS

Carpenter

Construction
Laborer

Drywall Finisher

Rofer

Woodworker

MEDIAN INCOME

(2019 in PA)

Average Pay:
\$48,330.00

Hourly:
\$23.24



ELECTRICAL OCCUPATIONS

The purpose of an Electrical Occupations program would be to prepare students to apply technical knowledge and skills necessary to install, operate, maintain and repair electrically-energized residential, commercial and industrial systems, and DC and AC motors, controls and electrical distribution panels. Instruction emphasizes practical application of circuit diagrams and use of electrical codes and includes blueprint reading, sketching and other subjects essential for employment in the electrical occupations. Reading and interpretation of commercial and residential construction wiring codes and specifications, installation and maintenance of wiring, service and distribution networks within large construction complexes are also critical components of the program.

COURSES OF STUDY

Blueprint Reading
Electrical Service
Green Technology
National Electric Code
Residential Cabling

INDUSTRY CERTIFICATIONS

Students may be eligible to earn the following industry certifications:

- NCCER
- OSHA

PENNSYLVANIA SKILLS CERTIFICATE/COLLEGE CREDIT

Students who successfully complete their program of study have the opportunity to earn college credits to post-secondary institutions where we have current articulation agreements. Students who meet a 70% benchmark on the written portion of the NOCTI end-of program assessment, may also earn 3 credits at over 60 colleges and universities in Pennsylvania.

A sample listing of post-secondary articulation agreements include: Butler County Community College, Laurel Technical Institute, Pittsburgh Technical College and Precision Manufacturing Institute. For more information about articulation agreements and college credit, please see the MCCC Guidance Counselor.



CAREERS

Electrical Power-Line Installers & Repairers

Electricians

Security & Fire Alarm Installers

MEDIAN INCOME

(2019 in PA)

Average Pay:
\$62,260.00

Hourly:
\$29.93



PRECISION PRODUCTION METALS

This course is designed for students to gain knowledge and skills with an emphasis in machining. Areas are taught through hands-on assignments to develop technical skills. Through a variety of projects, students will be able to plan, setup, operate machines, as well as to manufacture and assemble metals. This is a National Institute for Metalworking Skills (NIMS) accredited program.

COURSES OF STUDY

CNC Milling and Turning
Hand Tools and Fasteners
Layout Work
Machining Math
Machining (Milling, Grinding and Turning)
Measurement and Inspection
Metal Technology

INDUSTRY CERTIFICATIONS

Students may be eligible to earn the following industry certifications:

- National Institute of Metalworking Skills (NIMS)
- OSHA

PENNSYLVANIA SKILLS CERTIFICATE/COLLEGE CREDIT

Students who successfully complete their program of study have the opportunity to earn college credits to post-secondary institutions where we have current articulation agreements. Students who meet a 70% benchmark on the written portion of the NOCTI end-of program assessment, may also earn 3 credits at over 60 colleges and universities in Pennsylvania.

A sample listing of post-secondary articulation agreements include: Butler County Community College, Laurel Technical Institute, Pittsburgh Technical College and Precision Manufacturing Institute. For more information about articulation agreements and college credit, please see the MCCC Guidance Counselor.



CAREERS

Machine Assemblers

Machine Operator

Machinists

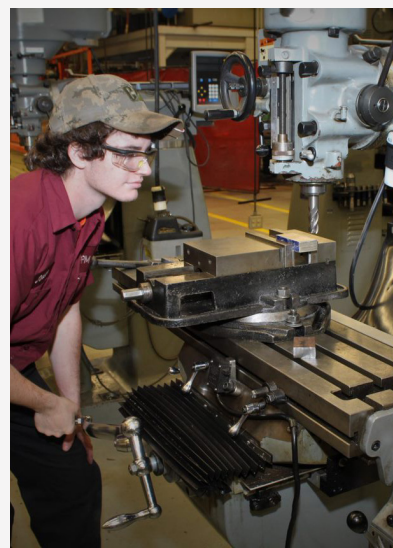
Production Operator

MEDIAN INCOME

(2019 in PA)

Average Pay:
\$44,420.00

Hourly:
\$21.36



WELDING

The welding program focuses on the instruction of many industry-specific types of welding, and cutting techniques. Students will learn Stick, Mig, Tig, and Flux-Core Welding. Also, students will receive instruction in Plasma and Oxy-Fuel cutting of metals. Blueprint reading and welding symbols will be taught so students can learn to produce real-world products and parts. American Welding Society standards are integrated into this welding curriculum.

COURSES OF STUDY

Flux Core Arc Welding
Gas Metal Arc Welding
Oxy-Fuel Welding
Pipe Welding
Principles of Welding
Shielded Metal Arc Welding
Welding Math and Print Reading

INDUSTRY CERTIFICATIONS

Students may be eligible to earn the following industry certifications:

- American Welding Society (AWS)
- OSHA

PENNSYLVANIA SKILLS CERTIFICATE/COLLEGE CREDIT

Students who successfully complete their program of study have the opportunity to earn college credits to post-secondary institutions where we have current articulation agreements. Students who meet a 70% benchmark on the written portion of the NOCTI end-of program assessment, may also earn 3 credits at over 60 colleges and universities in Pennsylvania.

A sample listing of post-secondary articulation agreements include: Butler County Community College, Laurel Technical Institute, Pittsburgh Technical College and Precision Manufacturing Institute. For more information about articulation agreements and college credit, please see the MCCC Guidance Counselor.



CAREERS

Fabrication Welder

Fitter Welder

Maintenance Welder

MEDIAN INCOME

(2019 in PA)

Average Pay:
\$42,490

Hourly:
\$20.43



TRANSPORTATION & LOGISTICS



AUTOMOTIVE TECHNOLOGY

The Automotive Technology program is designed to provide students with entry level skills and the high-tech knowledge needed to diagnose and repair today's modern vehicles. The student's training is based on Automotive Service Excellence Standards (ASE). The program also provides students the opportunity to earn their Pennsylvania State Inspection License. Students are able to work on modern trainer vehicles, customer vehicles, and their own vehicles.

COURSES OF STUDY

Brakes
Electrical Systems
Engine Performance
Engine Repair
Heating and Cooling Systems
Manual/Automatic Transmission
Steering and Suspension

INDUSTRY CERTIFICATIONS

Students may be eligible to earn the following industry certifications:

- Automotive Service Excellence Certification (ASE)
- Brakes
- Engine Performance
- Engine Repair
- Steering Suspension
- Motor Oil Certification (Valvoline)
- Safety and Pollution Prevention Automotive (SP/2)

PENNSYLVANIA SKILLS CERTIFICATE/COLLEGE CREDIT

Students who successfully complete their program of study have the opportunity to earn college credits to post-secondary institutions where we have current articulation agreements. Students who meet a 70% benchmark on the written portion of the NOCTI end-of program assessment, may also earn 3 credits at over 60 colleges and universities in Pennsylvania.

A sample listing of post-secondary articulation agreements include: Butler County Community College, Laurel Technical Institute, Pittsburgh Technical College and Precision Manufacturing Institute. For more information about articulation agreements and college credit, please see the MCCC Guidance Counselor.



CAREERS

Alignment Specialist

Automobile Mechanic

Automotive Technician

Brake Technician

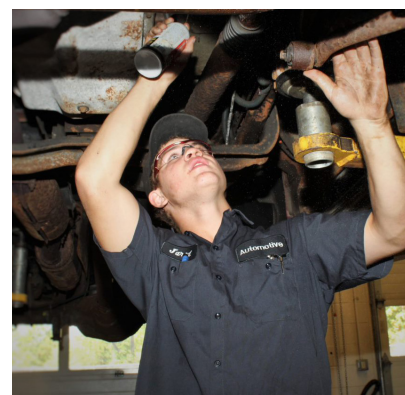
Maintenance Specialist

MEDIAN INCOME

(2019 in PA)

Average Pay:
\$42,090.00

Hourly:
\$20.24



COLLISION REPAIR AND REFINISHING

The automotive industry has a rich heritage and exciting future. That future is reflected in collision repair and refinishing, one of the fastest growing and most innovative fields in the industry. You will use cutting edge technology and the most up-to-date equipment in the industry as well as have an opportunity to earn industry leading certifications. Students will learn to estimate damage, disassemble and reassemble vehicles, fabrication, welding, repairing and replacing parts, complete vehicle refinishing and overall detailing. Collision repair and refinishing will teach you the skills related to manufacturing, welding, detailing, glass installation and customer service along with many other skills related to professional development.

COURSES OF STUDY

Body Panel Repair
Damage Analysis and Estimation
Interior and Exterior Trim and Glass
Painting and Refinishing
Plastic Panel and Parts Repair
Vehicle Structural Repair
Welding and Cutting

INDUSTRY CERTIFICATIONS

Students may be eligible to earn the following industry certifications:

- Automotive Service Excellence (ASE)
- I-Car
- PPG Certified Technician
- Safety and Pollution Prevention Automotive (SP/2)

PENNSYLVANIA SKILLS CERTIFICATE/COLLEGE CREDIT

Students who successfully complete their program of study have the opportunity to earn college credits to post-secondary institutions where we have current articulation agreements. Students who meet a 70% benchmark on the written portion of the NOCTI end-of program assessment, may also earn 3 credits at over 60 colleges and universities in Pennsylvania.

A sample listing of post-secondary articulation agreements include: Butler County Community College, Laurel Technical Institute, Pittsburgh Technical College and Precision Manufacturing Institute. For more information about articulation agreements and college credit, please see the MCCC Guidance Counselor.



CAREERS

Auto Body Repair Technician

Automotive Painter

Detailer

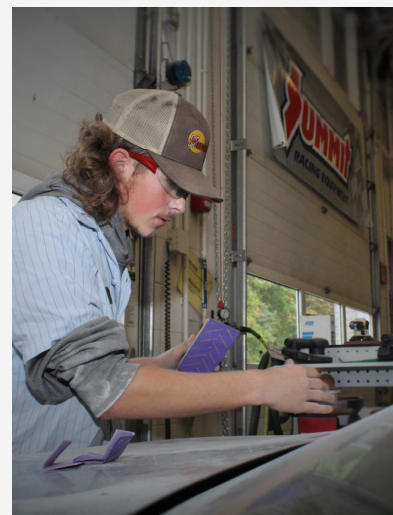
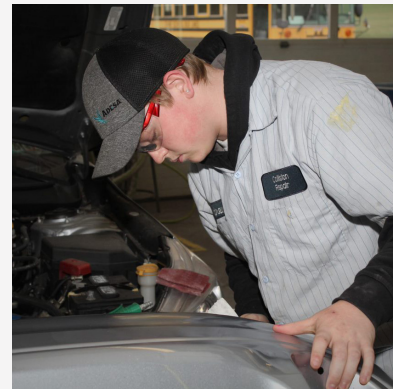
Shop Estimator

MEDIAN INCOME

(2019 in PA)

Average Pay:
\$42,730.00

Hourly:
\$20.55



DIESEL TECHNOLOGY

Get on the highway and learn the skills needed to pursue a career in diesel technology. Learn impressive features of Agricultural and Industrial Equipment. Bumper-to-bumper instruction in medium and heavy truck repair will allow students to diagnose, service and repair all aspects of diesel related equipment. This is accomplished using modern, high-tech scan tools and personal computer interfaces. Diesel engines have become more fuel efficient, lighter, quieter and environmentally friendly. These factors have created an increased demand for talented and skilled technicians.

COURSES OF STUDY

Brakes
Diesel Engine
Drive Train
Electrical Systems
Preventative Maintenance
Steering and Suspension
Transmissions

INDUSTRY CERTIFICATIONS

Students may be eligible to earn the following industry certifications:

- Automotive Service Excellence (ASE)
- Safety and Pollution Prevention Heavy Duty (SP/2)

PENNSYLVANIA SKILLS CERTIFICATE/COLLEGE CREDIT

Students who successfully complete their program of study have the opportunity to earn college credits to post-secondary institutions where we have current articulation agreements. Students who meet a 70% benchmark on the written portion of the NOCTI end-of program assessment, may also earn 3 credits at over 60 colleges and universities in Pennsylvania.

A sample listing of post-secondary articulation agreements include: Butler County Community College, Laurel Technical Institute, Pittsburgh Technical College and Precision Manufacturing Institute. For more information about articulation agreements and college credit, please see the MCCC Guidance Counselor.



CAREERS

Bus Mechanic

Diesel Technician

Farm Equipment

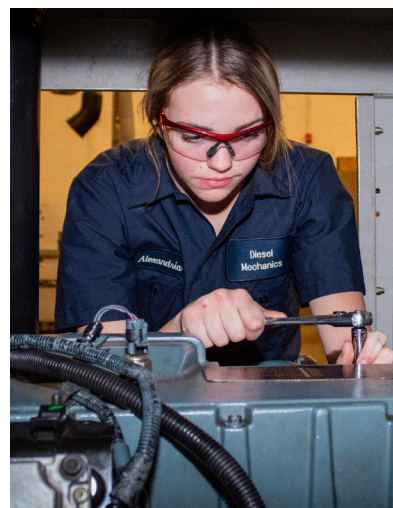
Mechanic and
Service Technician

MEDIAN INCOME

(2019 in PA)

Average Pay:
\$48,500.00

Hourly:
\$23.32



LOGISTICS & SUPPLY CHAIN MANAGEMENT

The Logistics and Supply Chain Management program prepares individuals to manage and coordinate logistical functions in an enterprise ranging from acquisitions to receiving and handling, through internal allocation of resources to operations units, to the handling and delivery of output. Includes instruction in acquisitions and purchasing, inventory control, storage and handling, just-in-time manufacturing, logistics planning, shipping and delivery management, transportation, quality control, resource estimation and allocation and budgeting.

COURSES OF STUDY

Inventory Management
Logistics and Supply Chain Management
Material Handling Equipment
Packing Operations
Procurement and Receiving Operations
Shipping and Transportation Operations

INDUSTRY CERTIFICATIONS

Students may be eligible to earn the following industry certifications:

- OSHA Career Safe-5 hour
- MSSC-Certified Logistics Associate
- MSSC-Certified Logistics Technician

PENNSYLVANIA SKILLS CERTIFICATE/COLLEGE CREDIT

Students who successfully complete their program of study have the opportunity to earn college credits to post-secondary institutions where we have current articulation agreements. Students who meet a 70% benchmark on the written portion of the NOCTI end-of program assessment, may also earn 3 credits at over 60 colleges and universities in Pennsylvania.

A sample listing of post-secondary articulation agreements include: Butler County Community College, Laurel Technical Institute, Pittsburgh Technical College and Precision Manufacturing Institute. For more information about articulation agreements and college credit, please see the MCCC Guidance Counselor.



CAREERS

Industrial Production Managers

Logisticians

Shippers & Receivers

Transportation and Material Movers

Transportation, Storage & Distribution Managers

MEDIAN INCOME

(2019 in PA)

Average Pay:
\$48,260.00

Hourly:
\$23.20



FREQUENTLY ASKED QUESTIONS

How many students are in each class?

Students are able to work individually and in groups to learn the skills necessary to be successful in the real world. Classes are sized for students to get a variety of training experiences.

Does this replace my classes in high school?

Students attend Mercer County Career Center for half a day. While at the Career Center, students are in their program learning the competencies needed to complete their career program. Students take their required academic courses at their high school. Career Center students earn credits toward their graduation requirements. Students can still participate in their home school's clubs, organizations, and activities.

What kind of hands-on experience will I receive?

Students who attend Mercer County Career Center learn the skills and techniques through classroom instruction, but spend more time applying those skills and techniques in real-world, hands-on applications and experiences.

What happens if I start in one program, but decide that I prefer a different program?

Planning for a career should begin in elementary school. Guidance Counselors work with students to ensure their interests match their career goals in the middle school levels.

By the time students make a decision to come to Mercer County Career Center, most of this planning has taken place. To be eligible for many certificates, students have to be in a program for two years; however, program changes can be made on a case-by-case basis.

Will I be more marketable when looking for employment?

Students who graduate from the Mercer County Career Center have developed a career portfolio, earned a variety of business/industry credentials and have gained the experience of working in real-world, high-tech scenarios making them ready for entry-level employment.





776 GREENVILLE ROAD
MERCER, PA 16137

WWW.MERCERCCC.ORG
(724) 662-3000

NON PROFIT ORG.
U.S. POSTAGE PAID
MERCER, PA
PERMIT NO. 88

WHY CHOOSE MCCC?

- ✓ All of our programs **prepare students for post-secondary education or immediate employment.**
- ✓ **Earn college credit** while learning a skill and becoming certified in a specific area.
- ✓ Take advantage of our Cooperative Education program where you can **gain work experience and prepare for a career while still in high school.**
- ✓ We provide a **real world education** to all of our students preparing them for their futures!

MERCER COUNTY CAREER CENTER

Real Education.
Real Experience.