

**Crosby Elem Sch**  
**Harvard CUSD 50**  
**Harvard, ILLINOIS**



**ILLINOIS**  
**SCHOOL**  
**REPORT**  
**CARD**

**GRADES : K 1 2 3**

State and federal laws require public school districts to release report cards to the public each year.

This year, we have updated the report card to provide a full picture of school performance beyond just test scores. A display of this data designed with parents and communities in mind is available on [illinoisreportcard.com](http://illinoisreportcard.com). All of the metrics posted on [illinoisreportcard.com](http://illinoisreportcard.com) are also included in this report.

**STUDENTS**

RACIAL/ETHNIC BACKGROUND AND OTHER INFORMATION												
	White	Black	Hispanic	Asian	Native Hawaiian /Pacific Islander	American Indian	Two or More Races	Percent Low-Income	Percent Limited-English-Proficient	Percent IEP	Percent Homeless	Total Enrollment
<b>School</b>	30.3	0.9	66.5	0.3	0.0	0.0	2.1	62.7	53.8	11.9	1.2	775
<b>District</b>	33.2	0.8	64.0	0.2	0.0	0.0	1.7	65.0	30.3	11.6	0.9	2,518
<b>State</b>	48.8	17.3	25.5	4.7	0.1	0.3	3.2	49.9	10.5	14.3	2.2	2,041,779

**Low-income** students come from families receiving public aid; live in institutions for neglected or delinquent children; are supported in foster homes with public funds; or are eligible to receive free or reduced-price lunches.  
**IEP** Students are those students eligible to receive special education services.

**Limited-English-proficient** students are those students eligible for transitional bilingual programs.  
**Total Enrollment** is based on **Home School**.  
**Homeless** students are who do not have permanent and adequate homes.

	High Sch. Dropout Rate	Chronic Truancy Rate	Mobility Rate	Attendance Rate
<b>School</b>		2.7	11.7	94.6
<b>District</b>		10.2	11.1	93.2
<b>State</b>		9.8	12.2	94.4

**Mobility rate** is based on the number of times students enroll in or leave a school during the school year.  
**Chronic truants** are students who are absent from school without valid cause for 9 or more of the last 180 school days.

**INSTRUCTIONAL SETTING**

PARENTAL CONTACT*	
	Percent
<b>School</b>	100.0
<b>District</b>	100.0
<b>State</b>	95.3

TOTAL SCHOOL DAYS	
	Days
<b>School</b>	174
<b>District</b>	174
<b>State</b>	175

8TH GRADERS PASSING ALGEBRA I **	
<b>School</b>	
<b>District</b>	54.1
<b>State</b>	28.4

\*\* For the 8th graders passing algebra I, if the percentage is 0, it means that an Algebra I course is not offered.

\* Parental contact includes parent-teacher conferences, parental visits to school, school visits to home, telephone conversations, and written correspondence.

STUDENT-TO-STAFF RATIOS			
Pupil-Teacher Elementary	Pupil-Teacher Secondary	Pupil-Certified Staff	Pupil-Administrator
--	--	--	--
18.7	14.7	9.4	192.2
18.7	18.9	11.3	176.5

HEALTH AND WELLNESS (days per week)	
<b>School</b>	3.0
<b>District</b>	4.0
<b>State</b>	4.0

AVERAGE CLASS SIZE (as of the first school day in May)											
Grades	K	1	2	3	4	5	6	7	8	9 - 12	Overall
School	20.2	21.6	23.8	22.3							22.0
District	20.2	21.6	23.8	22.3							18.9
State	20.4	21.4	22.0	22.5							21.1

TIME DEVOTED TO TEACHING CORE SUBJECTS (Minutes Per Day)												
Grades	Mathematics			Science			English/Language Arts			Social Science		
	3	6	8	3	6	8	3	6	8	3	6	8
School	60			30			120			30		
District	60			30			120			30		
State	71			34			133			30		

TEACHER INFORMATION (Full-Time Equivalents)											
	White	Black	Hispanic	Asian	Native Hawaiian/ Pacific islander	American Indian	Two or More Races	Unknown	Male	Female	Total Number
	District	87.9	0.0	10.4	0.5	0.0	0.0	1.1	0.0	27.7	72.3
State	83.4	6.0	5.7	1.4	0.1	0.2	0.8	2.5	23.3	76.7	127,152

TEACHER INFORMATION (Continued)			
	Average Teaching Experience (Years)	% of Teachers with Bachelor's Degrees	% of Teachers with Master's & Above
School	--	--	--
District	11.0	45.6	52.8
State	13.1	38.1	61.4

Poverty (low-income) is defined on page 1 of all report cards. High- and low-poverty schools include those in the top and bottom quarters of the poverty distribution of schools in the state.

Some teacher/administrator data are not collected at the school level.

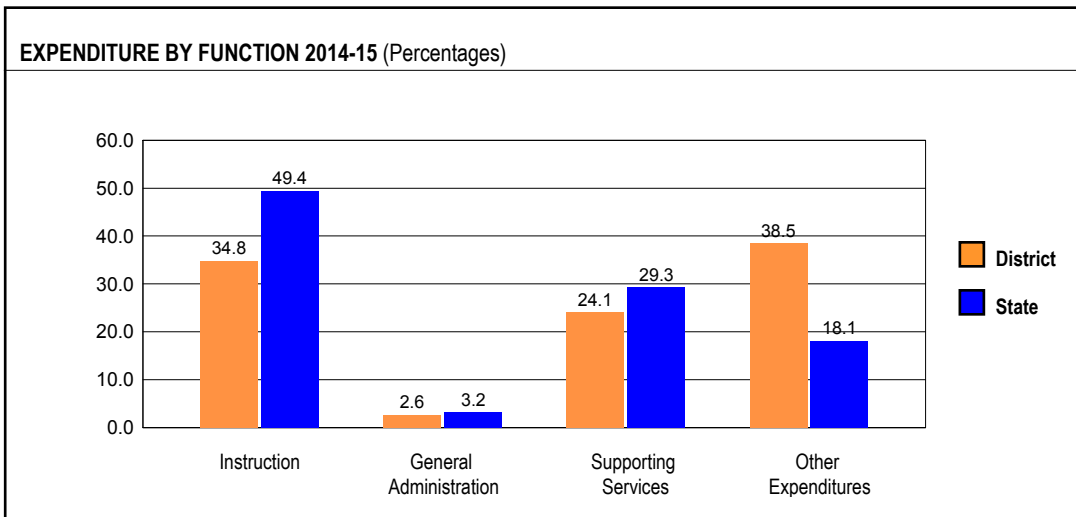
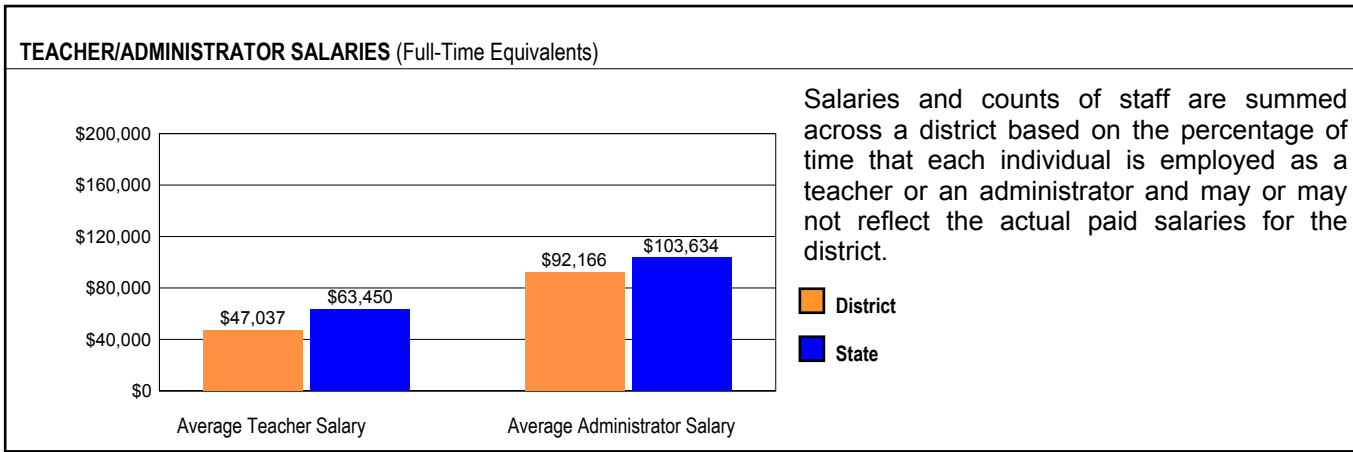
TEACHER RETENTION RATE	
School	85.3
District	86.9
State	85.8

PRINCIPAL TURNOVER (Count)	
School	1.0
District	1.0
State	2.0

TEACHER ATTENDANCE	
School	81.3
District	85.5
State	76.5

Percentage of teachers absent 10 or fewer days  
Data from 2013-14 Office of Civil Rights Data Collection, published June 2016

## SCHOOL DISTRICT FINANCES



### REVENUE BY SOURCE 2014-15

	District	District %	State %
Local Property Taxes	\$14,947,936	49.0	62.8
Other Local Funding	\$580,881	1.9	4.6
General State Aid	\$8,891,894	29.1	16.3
Other State Funding	\$3,154,921	10.3	8.6
Federal Funding	\$2,946,938	9.7	7.7
<b>TOTAL</b>	<b>\$30,522,570</b>		

### EXPENDITURE BY FUND 2014-15

	District	District %	State %
Education	\$21,700,849	54.0	73.4
Operations & Maintenance	\$2,287,607	5.7	6.4
Transportation	\$1,585,822	3.9	3.7
Debt Service	\$8,533,805	21.2	8.1
Tort	\$189,169	0.5	1.3
Municipal Retirement/ Social Security	\$667,021	1.7	2.1
Fire Prevention & Safety	\$0	0.0	0.5
Capital Projects	\$5,249,749	13.1	4.7
<b>TOTAL</b>	<b>\$40,214,022</b>		

### OTHER FINANCIAL INDICATORS

	2013 Equalized Assessed Valuation per Pupil	2013 Total School Tax Rate per \$100	2014-15 Instructional Expenditure per Pupil	2014-15 Operating Expenditure per Pupil
District	\$91,741	6.87	\$6,161	\$11,101
State	**	**	\$7,712	\$12,821

\*\* Due to the way Illinois school districts are configured, state averages for equalized assessed valuation per pupil and total school tax rate per \$100 are not provided.

Equalized assessed valuation includes all computed property values upon which a district's local tax rate is calculated.

Total school tax rate is a district's total tax rate as it appears on local property tax bills.

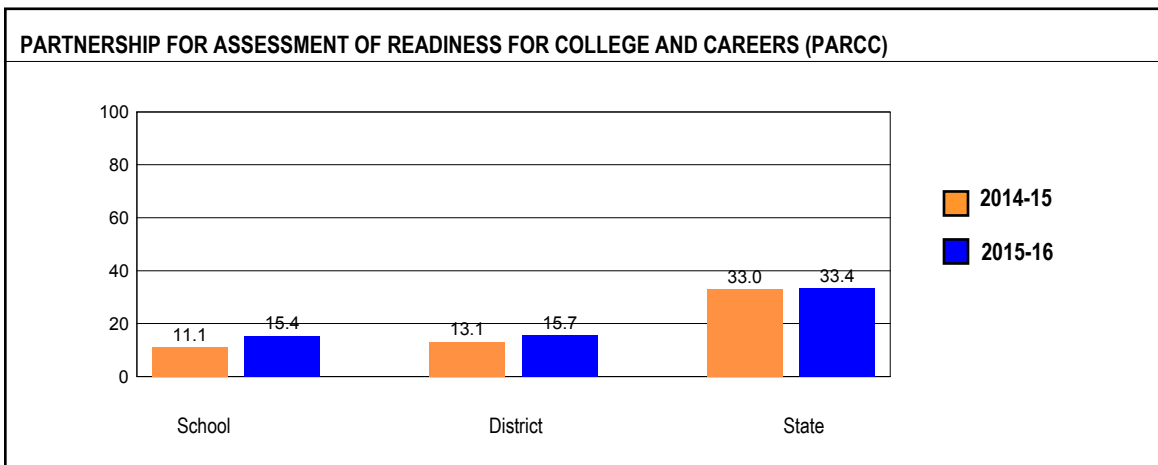
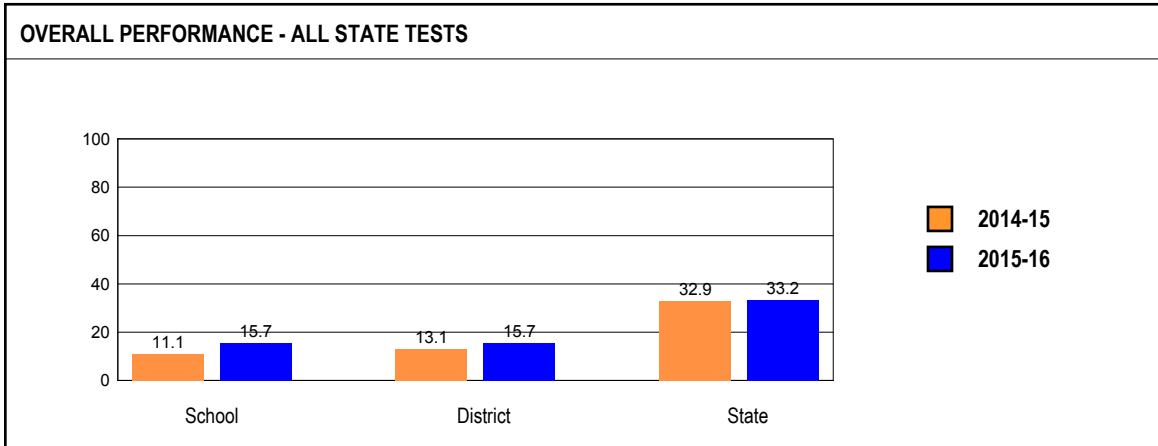
Instructional expenditure per pupil includes the direct costs of teaching pupils or the interaction between teachers and pupils.

Operating expenditure per pupil includes the gross operating cost of a school district excluding summer school, adult education, bond principal retired, and capital expenditures.

## ACADEMIC PERFORMANCE

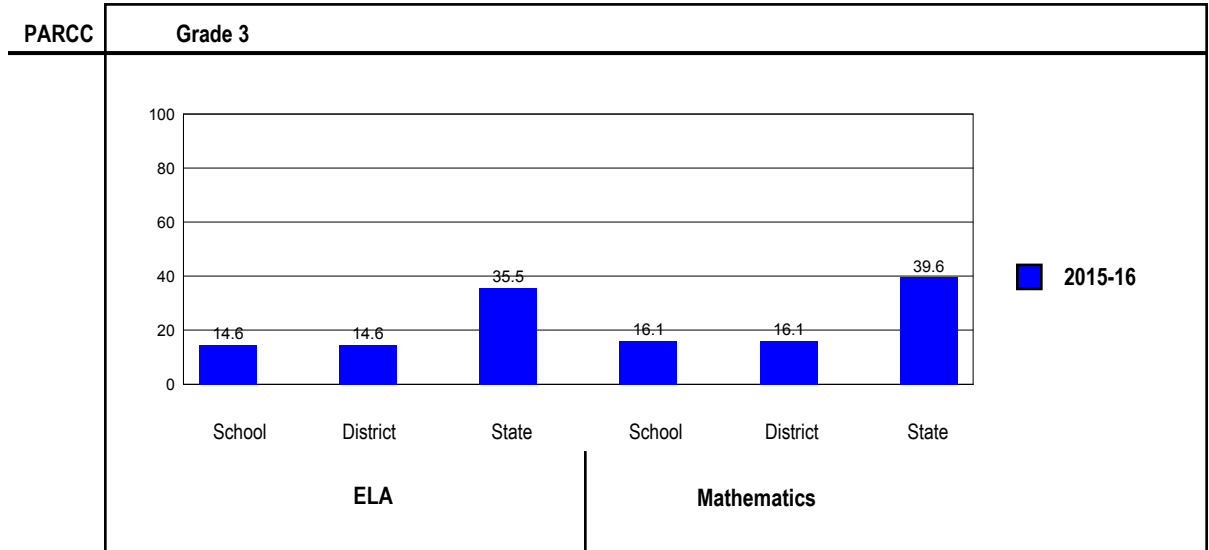
### OVERALL STUDENT PERFORMANCE

These charts present the overall percentage of state test scores categorized as meeting or exceeding the PARCC expectations or DLM-AA Standards for your district, and the state.



**PARCC PERFORMANCE**

These charts present the overall percentage of state test scores categorized as meeting or exceeding the PARCC expectations or DLM-AA Standards for your district, and the state.



## PERFORMANCE ON STATE ASSESSMENTS

The PARCC is administered to students in grade 3 through 8 and high school. The DLM-AA is administered to students in grade 3 through 8 and 11 with disabilities whose Individualized Education Programs (IEPs) indicate that participation in the PARCC would not be appropriate.

Students with disabilities have an IEP (No Child Left Behind Act). An IEP is a written plan for a child with a disability who is eligible to receive special education services under the Individuals with Disabilities Education Act.

In order to protect students' identities, test data for groups of fewer than ten students are not reported.

PERCENTAGE OF STUDENTS NOT TESTED IN STATE TESTING PROGRAMS FOR ELA															
		Gender			Racial/Ethnic Background							LEP	Migrant	Students with Disabilities	Economically Disadvantaged
		All	Male	Female	White	Black	Hispanic	Asian	Native Hawaiian/Pacific Islander	American Indian	Two or More Races				
School	*Enrollment	200	99	101	54	3	139	0	0	0	4	111	0	29	144
	Reading	1.5	2.0	1.0	5.6		0.0					0.0		3.4	1.4
District	*Enrollment	1,313	697	616	413	10	861	4	0	0	25	318	0	138	927
	Reading	2.7	2.3	3.1	4.8	0.0	1.7				0.0	1.3		4.3	2.6
State	*Enrollment	1,050,307	537,851	512,454	512,582	177,823	272,642	49,633	1,043	2,886	33,656	87,711	198	147,577	527,950
	Reading	2.5	2.5	2.6	2.2	3.0	2.9	2.0	3.5	3.0	2.7	2.5	1.0	3.6	2.7

\* Enrollment as reported during the testing windows for grades 3 - 8 and high school.

Number of LEP Students who have attended schools in the U.S. for less than 12 months and are not assessed on the State's reading/language arts test: 0

PERCENTAGE OF STUDENTS NOT TESTED IN STATE TESTING PROGRAMS FOR MATHEMATICS															
		Gender			Racial/Ethnic Background							LEP	Migrant	Students with Disabilities	Economically Disadvantaged
		All	Male	Female	White	Black	Hispanic	Asian	Native Hawaiian/Pacific Islander	American Indian	Two or More Races				
School	*Enrollment	200	99	101	54	3	139	0	0	0	4	111	0	29	144
	Mathematics	1.5	2.0	1.0	5.6		0.0					0.0		3.4	1.4
District	*Enrollment	1,405	743	662	428	10	939	4	0	0	24	358	0	152	998
	Mathematics	2.2	1.6	2.9	4.9	0.0	1.1				0.0	0.3		4.6	2.2
State	*Enrollment	1,025,813	525,396	500,415	494,198	176,422	271,200	47,430	1,046	2,841	32,624	91,569	202	145,620	524,025
	Mathematics	2.5	2.5	2.6	2.1	3.2	3.0	1.5	3.5	3.0	2.6	2.0	1.0	3.8	2.8

\* Enrollment as reported during the testing windows for grades 3 - 8 and high school.

## Partnership for Assessment of Readiness for College and Careers (PARCC)

Each Performance Level is a broad, categorical level defined by a student's overall scale score and used to report overall student performance by describing how well students met the expectations for their grade level/course. Each Performance Level is defined by a range of overall scale scores for the assessment. There are five Performance Levels for PARCC assessments:

- Level 1: Did not yet meet expectations
- Level 2: Partially met expectations
- Level 3: Approached expectations
- Level 4: Met expectations
- Level 5: Exceeded expectations

Students performing at levels 4 and 5 met or exceeded expectations, have demonstrated readiness for the next grade level/course and, ultimately, are on track for college and careers. Performance Level Descriptors (PLDs) describe the knowledge, skills, and practices that students should know and be able to demonstrate at each Performance Level in each content area (ELA/L and mathematics), and at each grade level/course. PLDs are available at <http://avocet.pearson.com/PARCC/Home>.

### Grade 3

#### Grade 3 - All

Levels	ELA					Mathematics				
	1	2	3	4	5	1	2	3	4	5
School	43.8	26.6	15.1	14.6	0.0	26.0	34.4	23.4	15.1	1.0
District	43.8	26.6	15.1	14.6	0.0	26.0	34.4	23.4	15.1	1.0
State	20.8	19.8	23.9	32.2	3.2	13.8	20.4	26.2	31.8	7.8

#### Grade 3 - Gender

Levels	ELA					Mathematics					
	1	2	3	4	5	1	2	3	4	5	
Male	School	49.5	23.7	12.9	14.0	0.0	26.9	36.6	18.3	17.2	1.1
	District	49.5	23.7	12.9	14.0	0.0	26.9	36.6	18.3	17.2	1.1
	State	23.8	20.7	24.2	29.2	2.2	14.8	20.2	25.5	31.4	8.0
Female	School	38.4	29.3	17.2	15.2	0.0	25.3	32.3	28.3	13.1	1.0
	District	38.4	29.3	17.2	15.2	0.0	25.3	32.3	28.3	13.1	1.0
	State	17.7	18.9	23.6	35.4	4.4	12.7	20.6	27.0	32.2	7.6

**Grade 3 - Racial/Ethnic Background**

Levels	ELA					Mathematics					
	1	2	3	4	5	1	2	3	4	5	
White	School	20.0	18.0	28.0	34.0	0.0	10.0	20.0	32.0	34.0	4.0
	District	20.0	18.0	28.0	34.0	0.0	10.0	20.0	32.0	34.0	4.0
	State	12.2	17.1	25.8	40.5	4.4	7.6	15.7	26.0	40.3	10.3
Black	School										
	District										
	State	34.4	23.9	21.7	19.0	0.9	27.0	28.2	25.8	17.3	1.8
Hispanic	School	54.1	29.6	9.6	6.7	0.0	33.3	38.5	20.0	8.1	0.0
	District	54.1	29.6	9.6	6.7	0.0	33.3	38.5	20.0	8.1	0.0
	State	29.5	23.5	23.1	22.7	1.2	17.5	25.9	28.8	24.5	3.4
Asian	School										
	District										
	State	7.0	10.0	18.0	53.4	11.6	3.7	7.3	15.6	43.1	30.4
Native Hawaiian/Pacific Islander	School										
	District										
	State	11.8	11.2	21.7	47.2	8.1	9.2	12.3	29.4	33.1	16.0
American Indian	School										
	District										
	State	26.4	24.1	20.1	27.8	1.6	18.2	23.1	28.4	23.6	6.7
Two or More Races	School										
	District										
	State	17.4	19.4	24.1	34.8	4.3	13.5	19.5	25.5	32.5	9.0

**Grade 3 - Limited-English-Proficient**

Levels	ELA					Mathematics				
	1	2	3	4	5	1	2	3	4	5
School	65.4	27.1	6.5	0.9	0.0	39.3	42.1	15.0	3.7	0.0
District	65.4	27.1	6.5	0.9	0.0	39.3	42.1	15.0	3.7	0.0
State	34.1	25.1	22.2	18.1	0.6	19.2	26.9	28.3	22.8	2.9

**Grade 3 - Students with Disabilities**

Levels	ELA					Mathematics					
	1	2	3	4	5	1	2	3	4	5	
IEP	School	47.8	39.1	8.7	4.3	0.0	39.1	39.1	13.0	8.7	0.0
	District	47.8	39.1	8.7	4.3	0.0	39.1	39.1	13.0	8.7	0.0
	State	52.4	21.9	14.7	10.3	0.7	36.6	28.0	19.4	13.8	2.1
Non-IEP	School	43.2	24.9	16.0	16.0	0.0	24.3	33.7	24.9	16.0	1.2
	District	43.2	24.9	16.0	16.0	0.0	24.3	33.7	24.9	16.0	1.2
	State	16.0	19.5	25.3	35.5	3.6	10.3	19.3	27.3	34.5	8.7

**Grade 3 - Economically Disadvantaged**

Levels	ELA					Mathematics					
	1	2	3	4	5	1	2	3	4	5	
Free/Reduced Price Lunch	School	50.4	28.1	12.9	8.6	0.0	27.3	39.6	21.6	11.5	0.0
	District	50.4	28.1	12.9	8.6	0.0	27.3	39.6	21.6	11.5	0.0
	State	30.4	24.1	23.4	21.1	0.9	20.7	26.7	27.7	22.3	2.6
Not Eligible	School	26.4	22.6	20.8	30.2	0.0	22.6	20.8	28.3	24.5	3.8
	District	26.4	22.6	20.8	30.2	0.0	22.6	20.8	28.3	24.5	3.8
	State	9.6	14.8	24.5	45.1	5.9	5.7	13.1	24.5	42.8	13.9